

Rethinking “But this is
the way we’ve always
done it!”

SHANNON WILLIS, UNIVERSITY OF NORTH TEXAS LIBRARIES DIGITAL
PROJECT UNIT

“This is how we’ve always done it.”

1.

No.

2.

So?

Photographic Prints and Documents Workflows

- Incomplete documentation
- Students and staff were not all on the same page
- New procedures for me

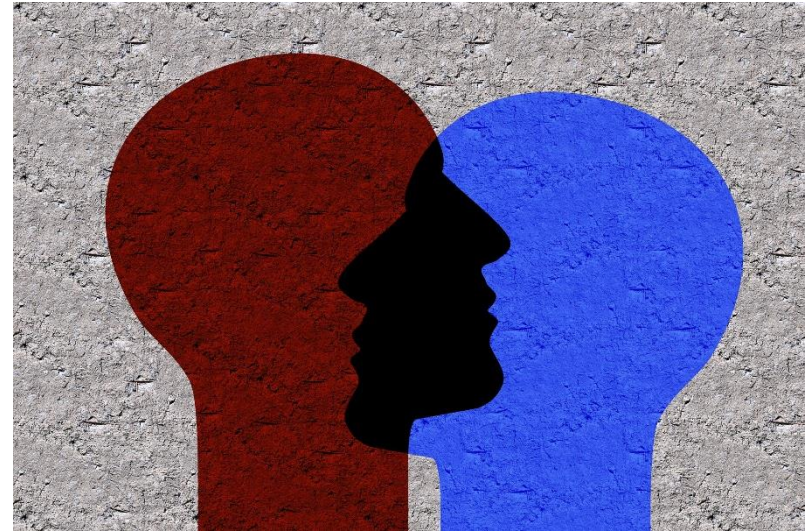
The problem



Current staff and student workers had *ALWAYS* done it one way.



I had *ALWAYS* done it another way.



How do we get to a
commonplace of what is the
best practice at this moment
in time for the lab?

The solution

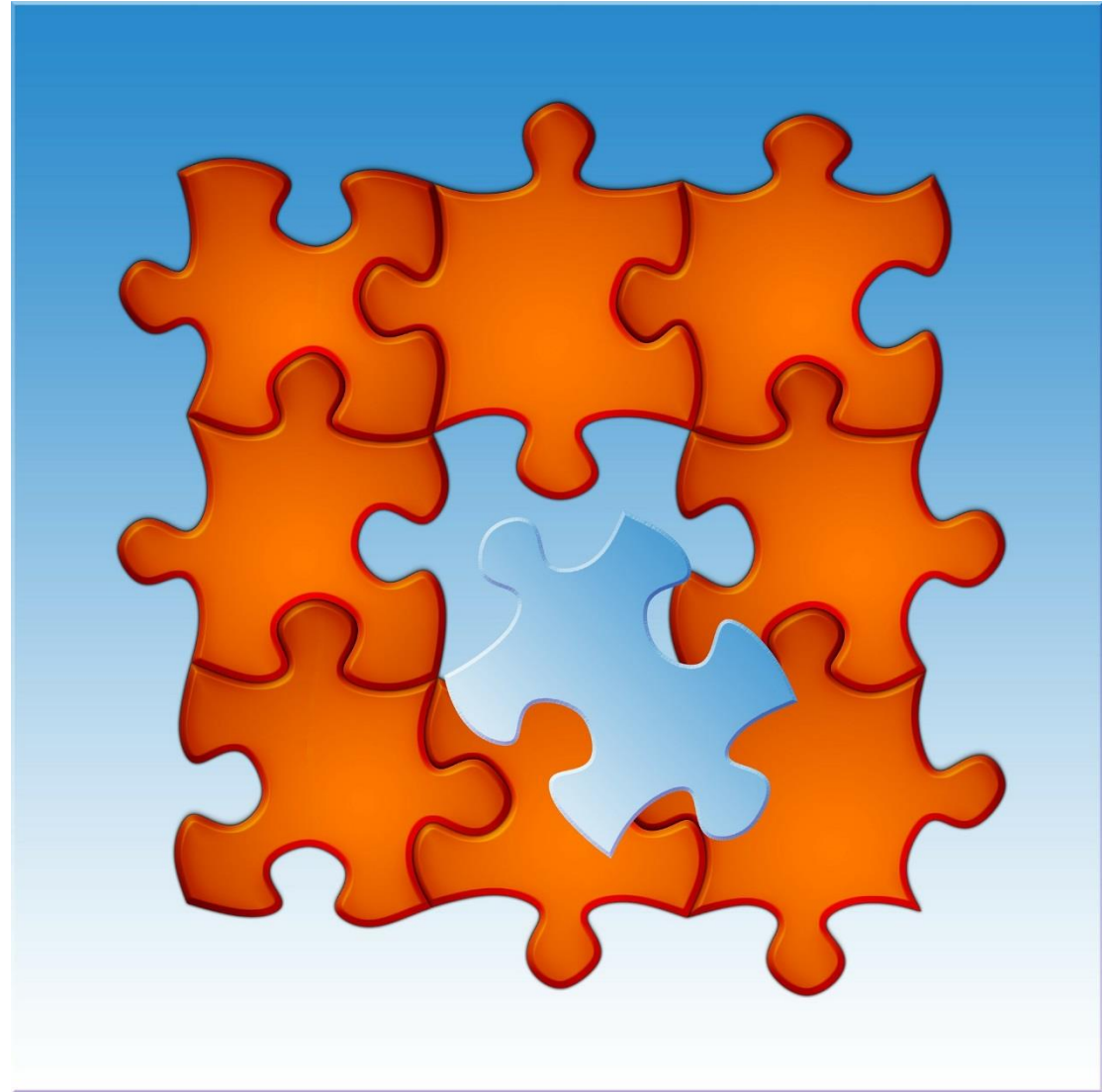


Testing

Tested multiple ways of scanning and processing photographic prints and document items.

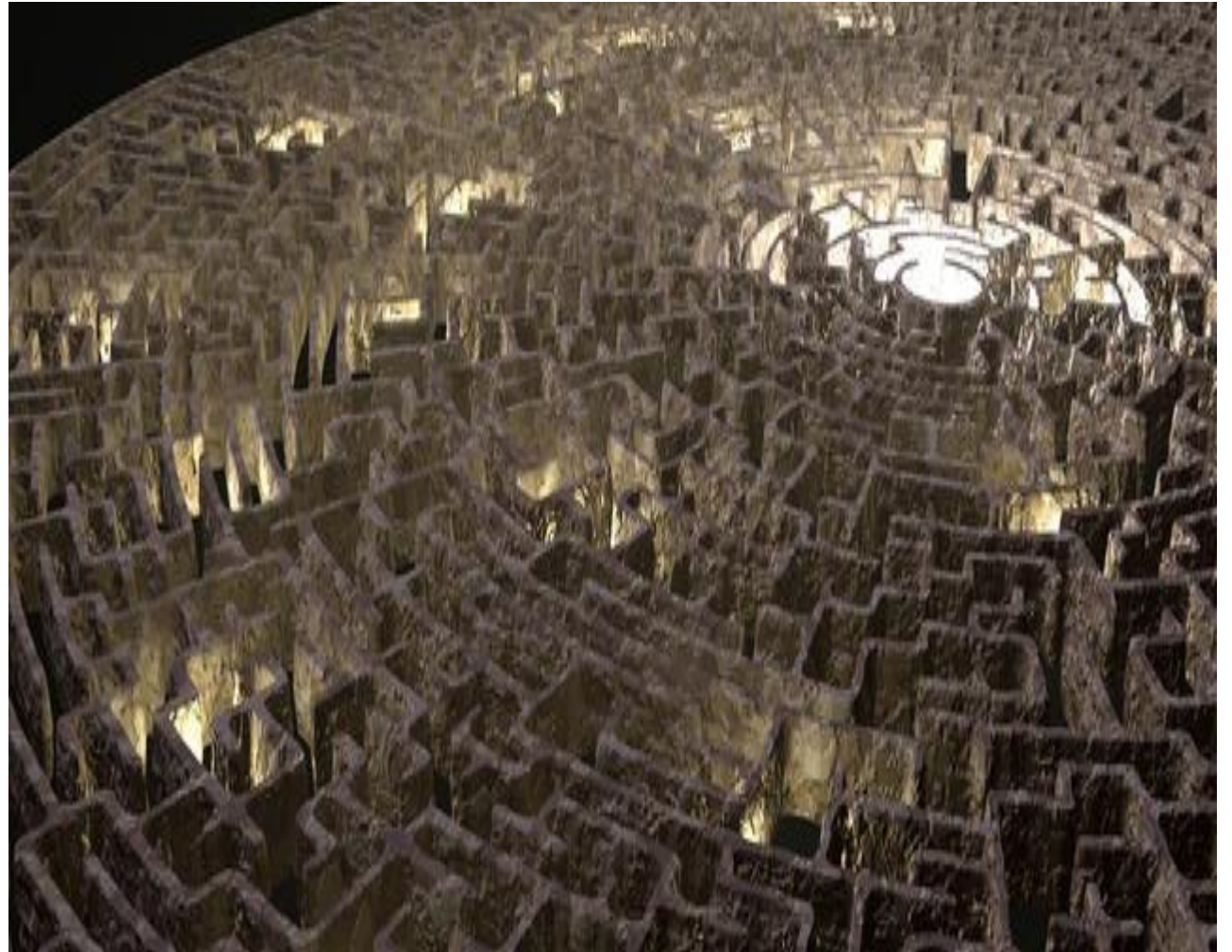
Staff members' workflows

Filled in gaps in current
workflow



Previous lab workflows

Scoured old lab documentation of past procedures



My own workflow

What I had been taught and
knew



New procedures

Invented a few new ways to scan and process these items



Photo from <http://thisisboise.com/events-recurring/discovery-center-spring-day-camp/attachment/wiz-kid-science-scientist-lab-coat-beakers-experiment-potion-goggles-smart/>

Total number of variations:

64

Breakdown of variations

Photograph (Black & White)						
			Pre-Processing	Post-Processing		
				Histogram	Tone	Threshold
Through Twain/ Through Epson Software	Standard Epson Profile	Histogram (Pull)				
		Histogram (0/255)				
		Auto Levels				
		Nothing				
	Custom Epson Profile	Histogram (Pull)				
		Histogram (0/255)				
		Auto Levels				
		Nothing				

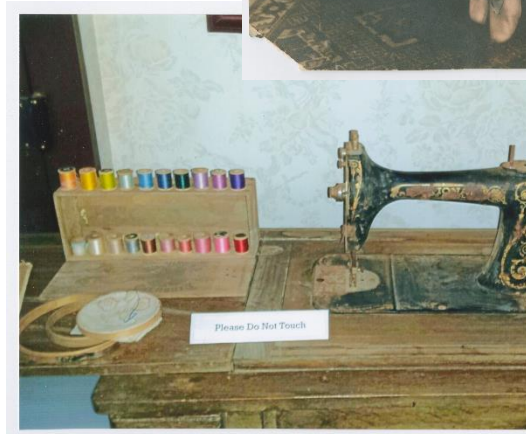
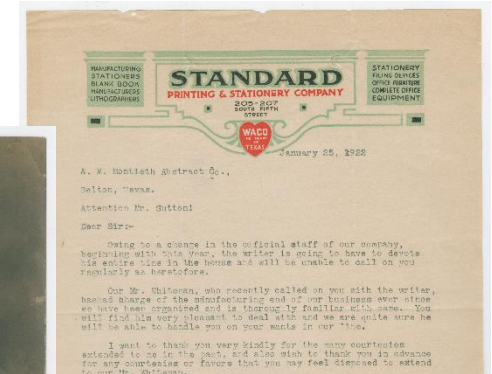
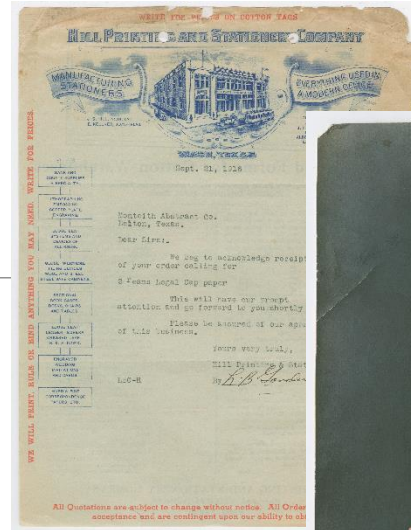
Tested

Color photograph, 50+ years old

Color photograph, modern

Color documents

Black and white negatives



Speed and efficiency

Timed individual steps and overall process

23-28 s. Longer	Scan times - Pre=11s, 400 color = 20-32s, 600 B/W = 31s *600 color = 84s.
- Create "Scans" Folder on Desktop (9s.)	
- Open Epson	- open PS (3-5s.) - Import (key board shortcut)
- Preview	- Preview
- Marque	- Marque
- Scan	- Scan
- Save to Scans (13s.)	
- Open in PS (8s.) (can drag Drop)	- Close Epson (2s)
- Process (50s)	- Process (50s)
- Save to :P (29s)	- Save to :P (29s)
- Close File (3s.)	- Close File (3s)
- Delete Desktop file (5s)	
- Empty Recycle Bin (5s)	
	- @ Import (key board shortcut)
- Preview	- Preview
<hr/>	<hr/>
5 unique (3 more steps) 31 s. repeated (9s. at start)	2 unique (3-5s.)

Errors

Areas in the workflow with opportunities for errors.



Surveyed staff

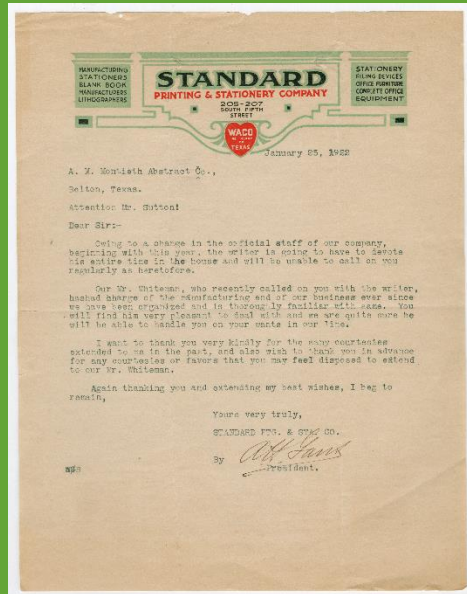
Visual tests for subjective acceptability



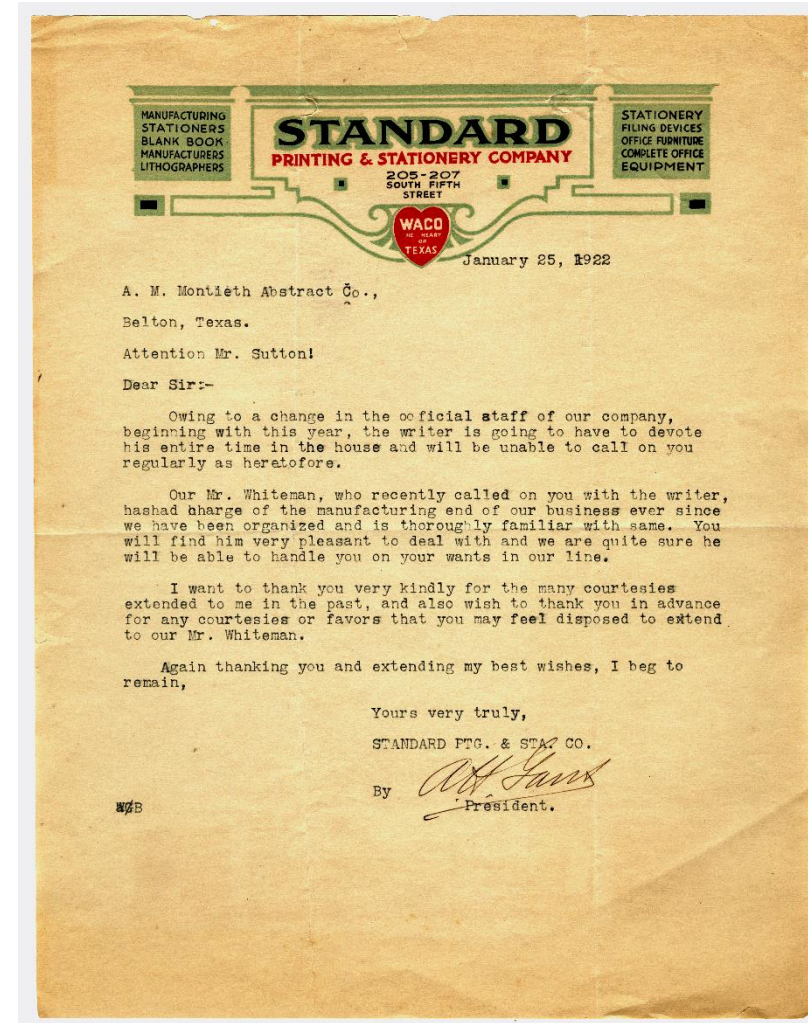
Results

- Learned idiosyncrasies of scanners and processing techniques
- Came to a consensus on what the more efficient scanning and processing procedures were that met the lab's current needs

Found the procedures that produced more faithful representations

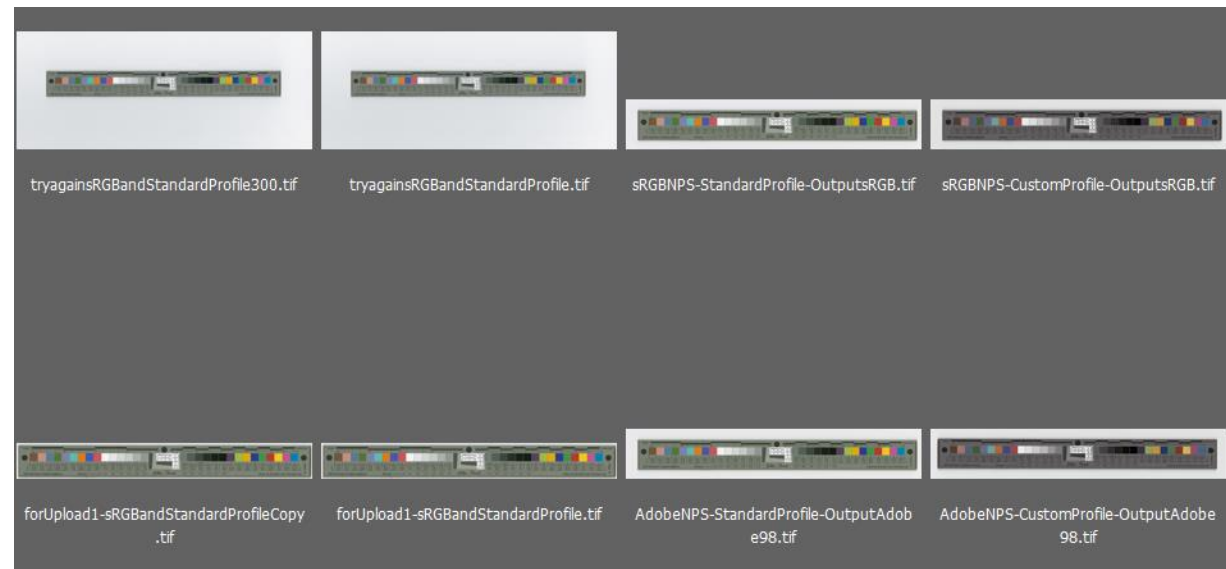


This is just wrong.



Color bars and checkers

Tested different profiles currently available



Conclusion

By including current staff in the process, created buy-in for the chosen method



Conclusion

Consensus was achieved for:

- How to train student workers
- What the final product should look like at the quality control step



Conclusion

Efficient workflow was chosen that fixed the problem of inconsistency in the lab and met the current needs of the lab



Photo from <https://thedailygag.wordpress.com/2015/08/16/how-to-bite-into-a-big-slice-of-success/>

Next steps

- Refine the current workflow for better color management and quality assurance
- Reexamining other lab standards

The way we've "*always*
done it" might not be
the best way now.
