



Lorraine M. LaFreniere, Ph.D.
Manager, Applied Geosciences and
Environmental Management Section

Environmental Science Division
Argonne National Laboratory
9700 South Cass Avenue, Bldg. 203
Argonne, IL 60439-4843

1-630-252-7969 phone
1-630-252-5747 fax
lafreniere@anl.gov

March 23, 2009

Ms. Beth Finzer, Site Remediation Unit
Bureau of Environmental Remediation
Kansas Department of Health and Environment
1000 SW Jackson, Suite 410
Topeka, KS 66612-1367

Subject: *Monitoring Plan for Everest, Kansas, ANL/EVS/AGEM/CHRON-1260*

Dear Ms. Finzer:

This transmittal, sent on behalf of Caroline Roe of the Commodity Credit Corporation, U.S. Department of Agriculture, is a response to your request of January 22, 2009, for a letter work plan outlining a program of annual groundwater and surface water monitoring at Everest, Kansas.

Once yearly, we propose to conduct surface water sampling at the 5 locations shown in Figure 1 and groundwater sampling in the 16 wells identified in Figure 2. The wells will be sampled according to the low-flow procedure. The next sampling event is planned for April 2009.

The surface water and groundwater samples collected will be preserved, shipped, and analyzed for volatile organic compounds as in previous work at Everest. Results will be reported to the KDHE. This monitoring program will continue until identified plume conditions at the site indicate a technical justification to change the monitoring program.

Please address your comments to Ms. Roe. Let me know if we can do anything to facilitate your review.

Sincerely,

A handwritten signature in black ink, appearing to read "Lorraine M. LaFreniere". The signature is fluid and cursive, written over a white background.

Lorraine M. LaFreniere

LML:rs

Attachment: *Monitoring Plan for Everest, Kansas*

cc (with attachment):

C. Roe, CCC/USDA

G. Fremerman, CCC/USDA

cc (no attachment):

S. Gilmore, CCC/USDA

D. Steck, CCC/USDA

chron 1260

bcc (with attachment):

L. LaFreniere
C. Dennis
R. Sedivy
E. Yan
J. Hansen
D. Surgnier
K. Haugen
L. Culbert

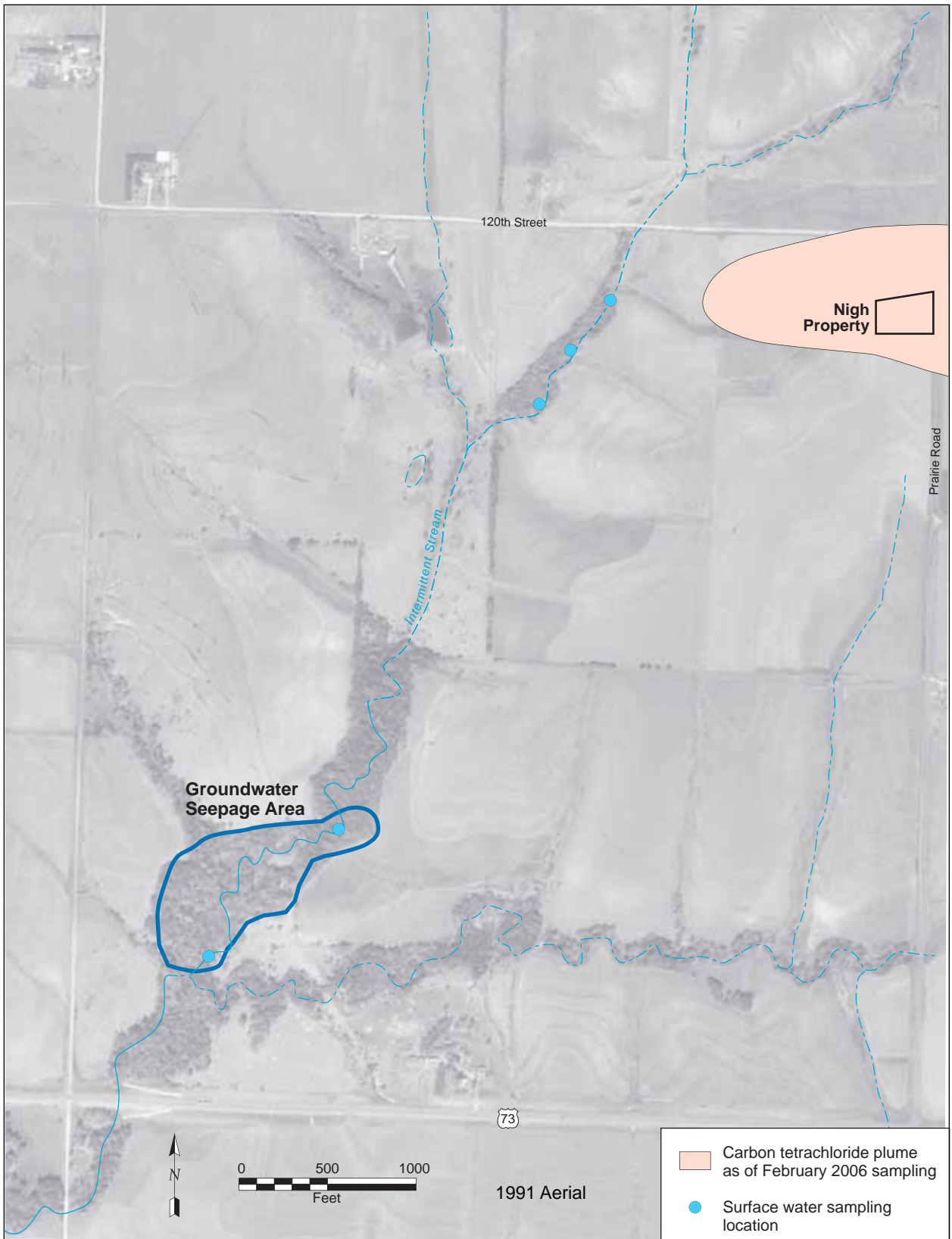


FIGURE 1 Surface water sampling locations for annual monitoring at Everest.

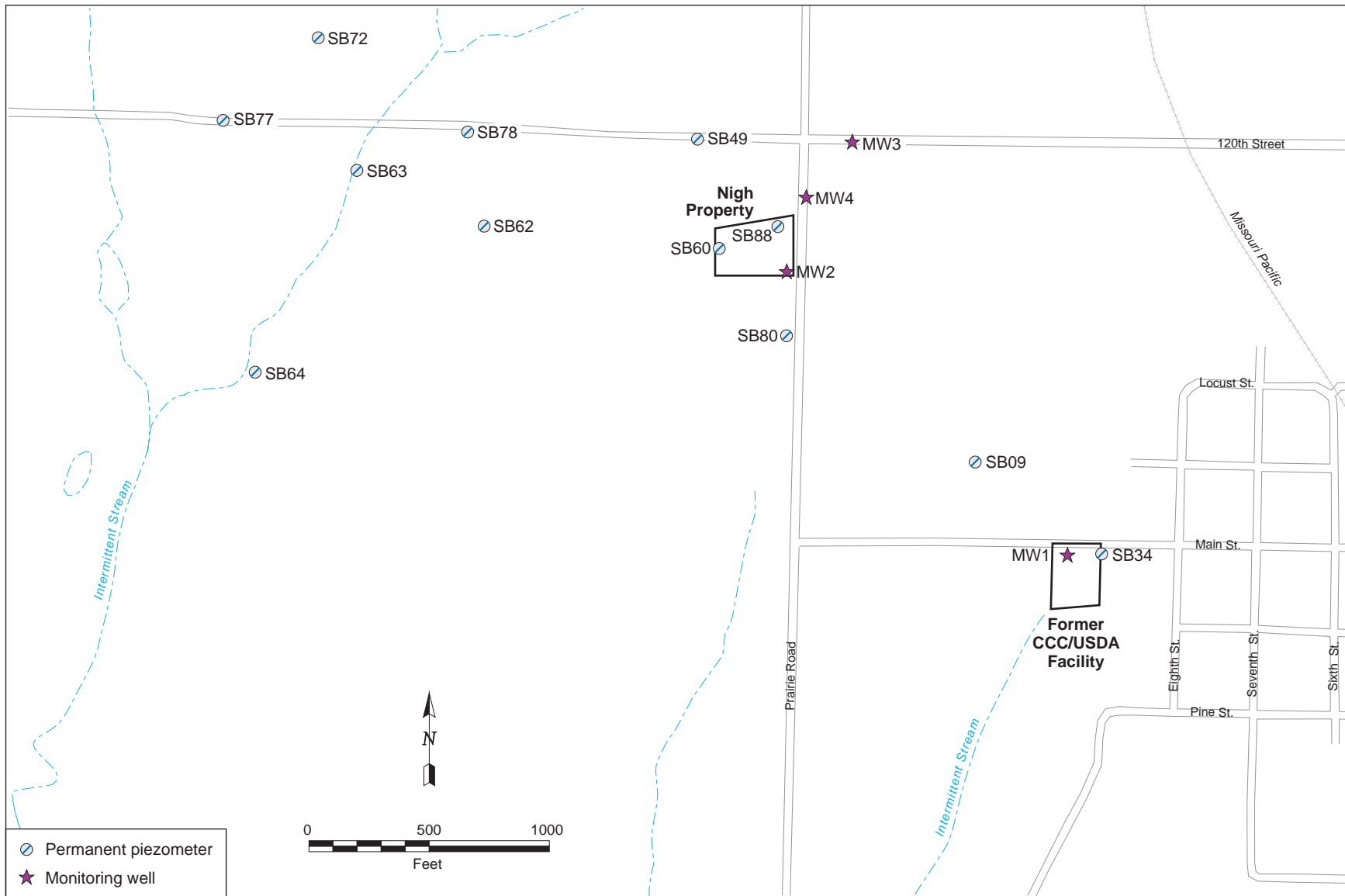


FIGURE 2 Groundwater sampling locations for annual monitoring at Everest.