

A bronze lion statue sits on a dark pedestal in the foreground, surrounded by green bushes. In the background, a brick building with large windows is visible under a clear sky. A large, leafy tree stands to the left of the building.

# ESTABLISHING AWARENESS & SUPPORT FOR SCHOLARLY COMMUNICATION

Scott Lancaster, PhD  
Megan K. Beard, MLIS

# BACKGROUND

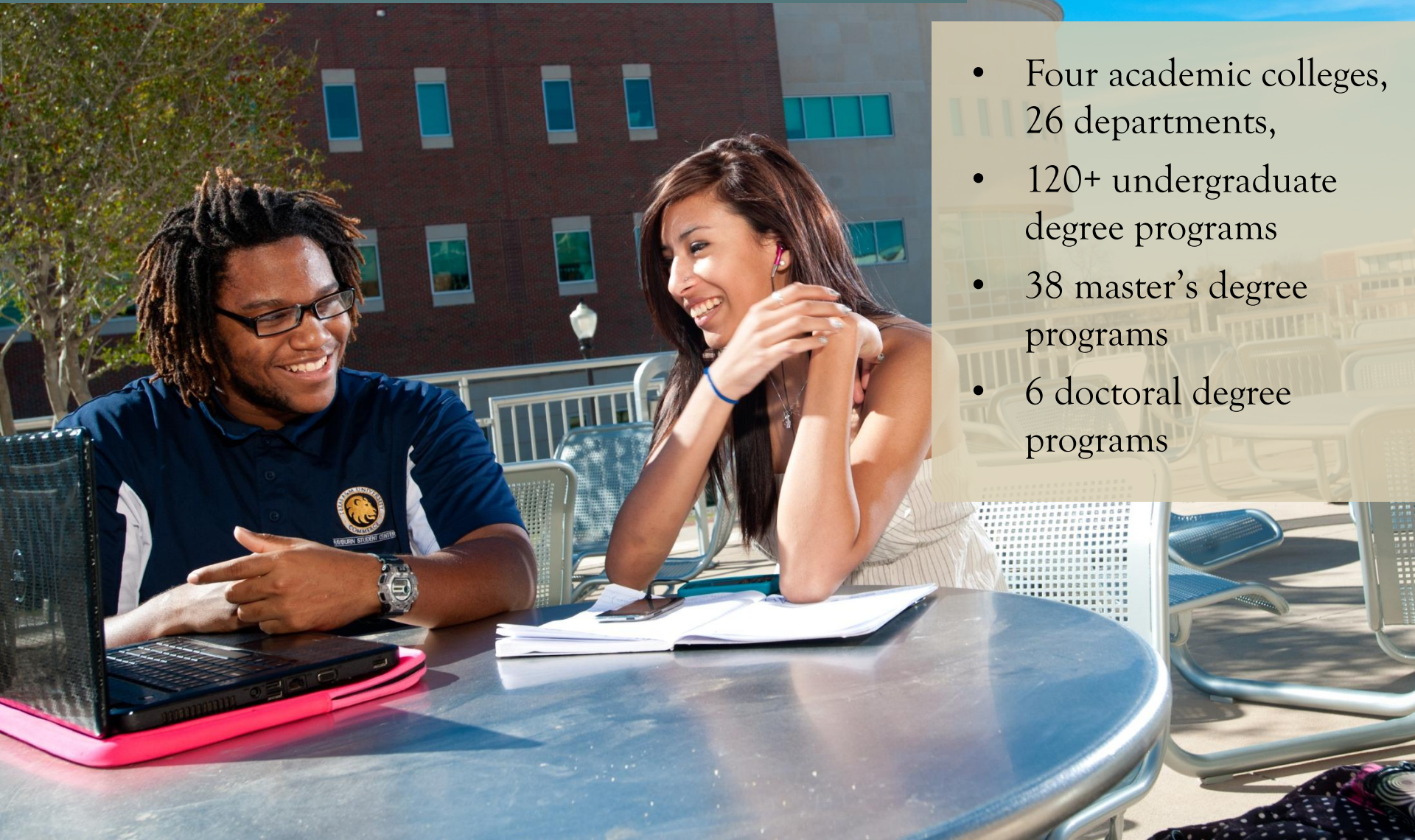


Texas A & M University  
Commerce  
1889

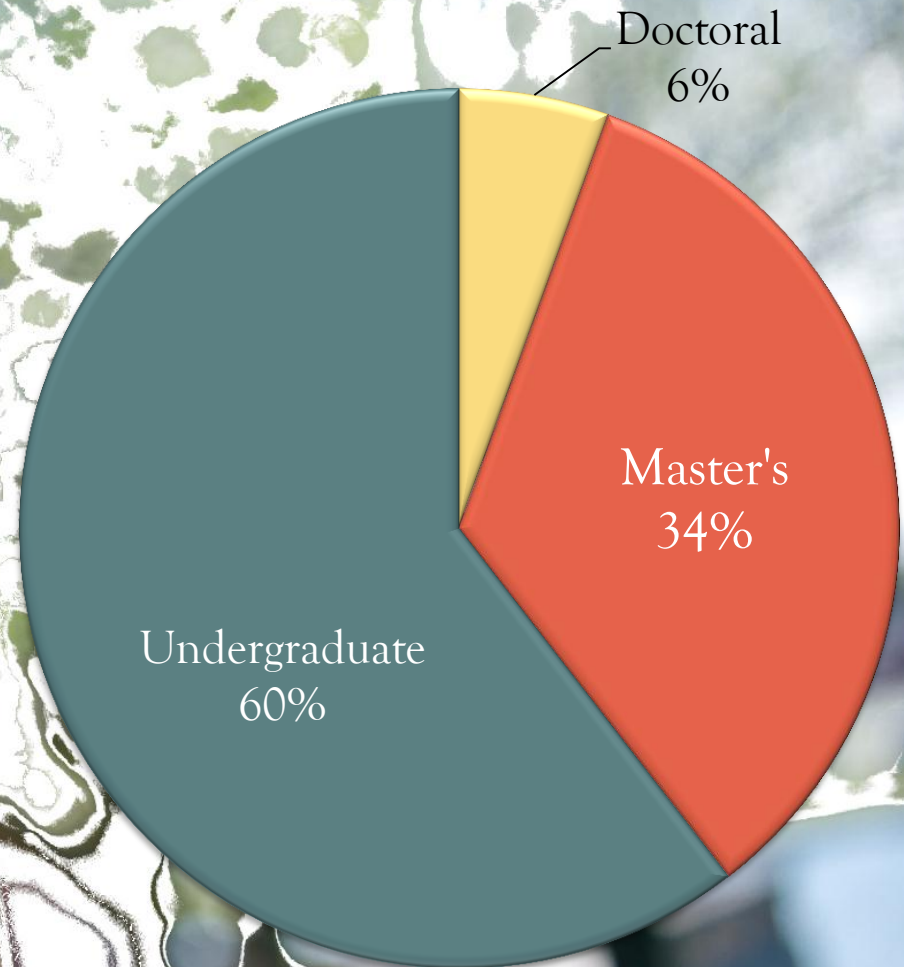
- Established in 1889
- 60 miles northeast of DFW metroplex
- Main campus in Commerce, TX (satellite campuses in Rockwall & Mesquite)

# ACADEMIC PROGRAMS

- Four academic colleges, 26 departments,
- 120+ undergraduate degree programs
- 38 master's degree programs
- 6 doctoral degree programs



# STUDENT BREAKDOWN



# DIGITAL COLLECTIONS



- Started in 2006 with library assistant, Adam Northam
- In March 2008, Adam was hired as the Digital Collections Librarian

Texas A&M University-Commerce Libraries

★ Northeast Texas  
Digital Collections



## Northeast Texas Digital Collections

Home

Browse All

Search

# COLLECTION DESCRIPTION

## Northeast Texas Digital Collections

### All Collections

#### [African-American History Collection](#)

A primary focus of the HeirLoom Project is to preserve and promote the history of the African-American experience in Northeast Texas. The African-American digital collection serves as a central location for historical documents relating to the history of African-Americans in this region. The content found on this page comes from the ...

[more...](#)



#### [American War Experience - Korean War](#)

The American War Experience - Korean War digital collection houses photographs, materials, and oral histories related to the Korean War. Some of the material for the Korean War Digital Collection resides in the Special Collections Department of James G. Gee Library on the campus of Texas A&M University-Commerce, but the majority of the ...

[more...](#)



#### [American War Experience - Vietnam War](#)

The Vietnam War (also the Second Indochina War) is often viewed as a product of the Cold War between the United States and Russia. The country of Vietnam was divided into North and South. The government of North Vietnam was communist, and therefore allied with Russia, while the government of South Vietnam identified as democratic, ...

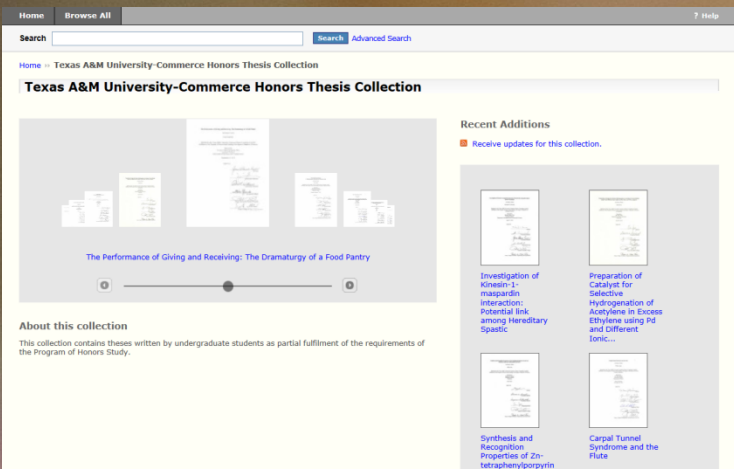


### About the collections

**\*\*\*Please note that our streaming media is not currently working. We are aware of this issue, and working to resolve it. Requests for audio/video files currently in our digital collection may be sent to: [Adam.Northam@tamuc.edu](mailto:Adam.Northam@tamuc.edu)**

Texas A&M University-Commerce Libraries' Northeast Texas Digital Collections is comprised of more than 40 distinct collections, which are very diverse in terms of content, size, and scope.

Many of the collections were created through partnerships with area public libraries, museums, and historical associations, which were facilitated by grant funds, while others are selected items that have been digitized from the Special Collections Department of Texas A&M University-Commerce Libraries. The goal of our digitization effort is to preserve, and provide sustained online access to materials that were previously inaccessible due to medium, format, or location.



- Started in 2011
- Currently 24 theses in the collection

# UNDERGRADUATE HONORS THESES



# THESIS & DISSERTATIONS

- Started in 2012
- Currently 170 theses and dissertations

The screenshot shows a web interface for the Texas A&M University-Commerce Electronic Theses and Dissertations collection. At the top, there are navigation links for 'Home', 'Browse All', and 'Help'. Below this is a search bar with a 'Search' button and a link to 'Advanced Search'. The main heading reads 'Texas A&M University-Commerce Electronic Theses and Dissertations'. Underneath, there are two columns: 'About this collection' and 'Recent Additions'. The 'About this collection' section states that the collection includes theses and dissertations completed by students in the Texas A&M University-Commerce Graduate School from 2011-present. The 'Recent Additions' section features a red button labeled 'Receive updates for this collection.' and displays two thumbnail images of document covers with their titles.

Home Browse All Help

Search Search Advanced Search

Home » Texas A&M University-Commerce Electronic Theses and Dissertations

### Texas A&M University-Commerce Electronic Theses and Dissertations

About this collection

This collection includes theses and dissertations completed by students in the Texas A&M University-Commerce Graduate School from 2011-present.

Recent Additions

Receive updates for this collection.

A PHENOMENOLOGICAL STUDY OF THREE GENERATIONS OF AFRICAN AMERICAN FAMILIES: UNDERSTANDING THE IMPACT OF THEIR PUBLIC...

DETERMINATION OF ACCUMULATED TOLERANCE IN ITALIAN RYEGRASS (*Lolium multiflorum*) IN NORTHEAST TEXAS



## 2010 SYMPOSIUM

- 2010 – Nearly all library staff attended the symposium
- Over the next 3 years, only one librarian attended the meeting



## UNT SYMPOSIUM ON OPEN ACCESS

### ABOUT

# OPEN ACCESS SYMPOSIUM

at the Denton campus. The symposium was intended to discuss national open access policies.

# TEXAS ETD



February 2013 - Dr. Lancaster attended on the recommendation of the library administration

# THE FACULTY PUB

- **March 2013** – proposal with idea borrowed from Loyola Marymount University  
<http://libguides.lmu.edu/content.php/pid=70267&sid=520555>
- **April 2013** – 1<sup>st</sup> Faculty Pub (Adkins)
- **September 2013** - 2<sup>nd</sup> Faculty Pub (Stewart)
- **October 2013** – 3<sup>rd</sup> Faculty Pub (Villanueva-Russell)
- **November 2013** – 4<sup>th</sup> Faculty Pub (Sun)





# WHAT DO A&M-COMMERCE FACULTY DO AFTER CLASS?

Find out The Faculty Pub. Our speakers for Spring 2014 will be:

The Faculty Pub is an ongoing series hosted by Gee Library that celebrates recent publications and creative works of A&M-Commerce faculty. Each forum allows the author to present, discuss, and answer questions about his or her work in a casual setting. The Faculty Pub is free and open to the public, all faculty, students, staff, and members of the community are invited to attend. Light refreshments will be served.



**Dr. LaVelle Hendricks**



**Dr. Larry Lemanski**



**Dr. Maria Hinojosa**



**Dr. Melinda Schlager**



Mark your calendar for Friday,  
January 24, February 21,  
March 28, and April 18 at 2:30  
PM, SRSC, Innovations A.

- Rebranded from Reference to Research & Instruction
- Focus on promoting library resources for instruction and scholarship
- Work to foster opportunities for collaboration between library faculty and teaching faculty



# RIS REBRANDING

- Statement of Need
- Existing & Proposed Projects
- Impact

A smiling Black woman with dark hair pulled back, wearing a red tank top and gold jewelry, is holding a large stack of books. She is standing in a library with bookshelves filled with books in the background. The image is used as a background for a presentation slide.

**THE PROPOSAL**



- Nature of scholarly communication is changing
- Faculty and students require new skills
- Library is in a unique position to fill this void
- Opportunity for scholarly engagement as faculty members

# STATEMENT OF NEED

- The Faculty Pub(lication)
- Faculty Outreach & Marketing
- RIS Rebranding
- Electronic theses & dissertations
- Individual efforts



# EXISTING PROJECTS



# PROPOSED PROJECTS

- Formation of a committee
- Increased web presence
- Scholarly Communication Series
- Current Research Publication

# SCHOLARLY COM. COMMITTEE

- Establish a Scholarly Communication Committee
- Charged with the development of a strategic plan
- Evaluating effectiveness of current projects and planning for new projects



# WEB PRESENCE

- Promote scholarly communication & research projects
- Ensure librarians are portrayed in the same way as other faculty
- Addition of poster session archive in digital collection



# REPRESENTATION ONLINE

Dr. Martha Foote

Dr. Edgar J. Manton

Dr. Ben W.-L. Jang

Dr. Derald Harp

Dr. Carrie Klypchak

Dr. Brad Klypchak

Dr. Quynh Dao Dang

Dr. Chester Robinson

Dr. Donna Dunbar-Odom

Dr. Farhad (Bill) Aslan

Dr. Augustine Arize

Dr. David Brown

Dr. Barbara G. Hammack

Dr. Linda Openshaw

Dr. Theodore Hansen

Dr. Tracy Henley

Dr. Chris Myers

Dr. Carmen F. Salazar

Dr. Joyce A. Scott

Dr. Shannon Carter

Dr. Jon E. Travis

Dr. Joyce E. Kyle Miller

Dr. Lamar W. Bridges

Dr. Kent Montgomery

Dr. Jennifer L. Schroeder

Dr. Henry H. Ross



Home > About Us > Administration > Committees and Councils > Faculty Senate > Faculty Profiles > Dr. Martha Foote

## Dr. Martha Foote

Professor & Head, Department of Curriculum & Instruction

### Teaching Highlights

- Has taught numerous ECE, ELED, & RDG courses at all levels- Undergraduate, Masters & Doctoral.
- Developed three new doctoral special topic courses (Action Research, Family Literacy, and Reggio Emilia & Constructive Pedagogy)
- Opened and coordinated the Plano field-based center; led the faculty design team to plan and teach all seminars (Internship & Residency) for six years.
- Initiated the study and research of Reggio Emilia Approach on A&M-C campus; participated in an International Study Tour to this Italian city in 2000, along with two doctoral students



### Scholarship Highlights

- Co-Edited four books
- 18 articles and/or book chapters
- Over fifty peer-reviewed presentations at national or international conferences (AERA, AACTE, NAEYC, NAREA, ALER/CRA, NRC, LESIG/IRA, and others)
- Co-author and PI for the IListo! Grant: Strategies for ELL Student Success ~ \$1.2 million over 5 years from the Dept. of Education, along with Dr. Chris Green and Dr. Carole Walker, Co-PIs

### Service Highlights

- Dept. Head for a large and complex department undergraduate program with yearly enrollment of

# TEACHING FACULTY EXAMPLE

# LIBRARY FACULTY EXAMPLE

## Staff Directory

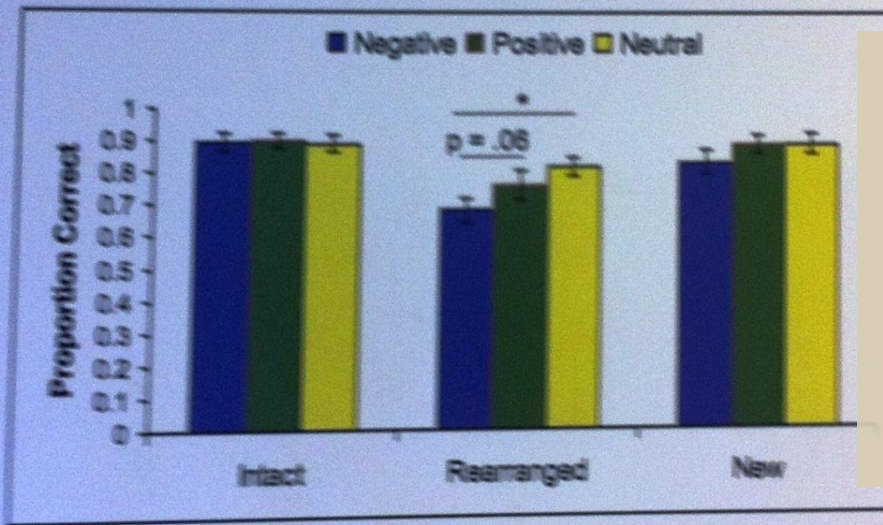
Name & Title	Phone Number	Department
<a href="#">Rose Mary Adams</a> Assistant to the Director	903-886-5731	Director's Office
<a href="#">Chim Ahanotu</a> Library Assistant II	972-882-7535	Metroplex
<a href="#">Sean Anderson, MSLIS</a> Technology Librarian / Library Webmaster	903-468-8661	Technology
<a href="#">Susan Andrews, MSLS</a> Serials Librarian	903-886-5733	Serials
<a href="#">John Atabaev, MLIS</a> Reference Librarian	903-886-5726	Reference
<a href="#">Megan Beard, MLIS</a> Reference Librarian	903-886-5719	Reference
<a href="#">Charles Brookshire</a> Library Assistant II - Nexus		Access Services
<a href="#">Tina Freeman</a> Library Assistant II - Media	903-886-5502	Access Services
<a href="#">Sandy Hayes, MLIS</a> Acquisitions & Cataloging	903-886-5137	Acquisitions
<a href="#">Gail Johnston, MSLS</a> Associate Director of Libraries	903-886-5715	Director's Office
<a href="#">Marsha Keenan, MLS, MPA</a> ILS Librarian	903-886-5727	Systems
<a href="#">Scott Lancaster, PhD, MSLS, MA</a> Reference Librarian	903-886-5725	Reference
<a href="#">Kitten Lee</a>	903-886-5713	Access Services

# Effects of Emotion on Associative Recognition

Benton H. Pierce<sup>1</sup>, Elizabeth A. Kensinger<sup>2</sup>

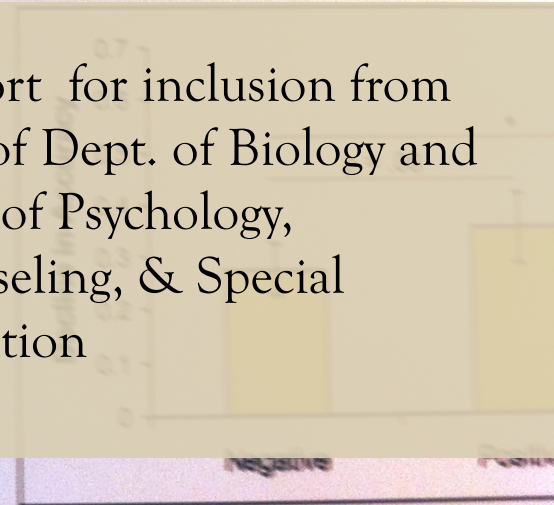
<sup>1</sup>Texas A&M University-Commerce, <sup>2</sup>Boston College

### Experiment 1 Results – Short Delay



• Negative rearranged pairs correctly recognized at lower rate than positive or neutral pairs.

### Decline in Accuracy for R Across Del



• Accuracy for negative rearranged pairs declined more than for neutral pairs.

• Difference between negative and positive pairs was originally significant

### Conclusion

• Beneficial effects of emotion appeared only after a delay

**DIGITAL POSTER SUPPORT**

- Forum held twice a semester to discuss key issues related to scholarly communication
- In-house experts and invited guests

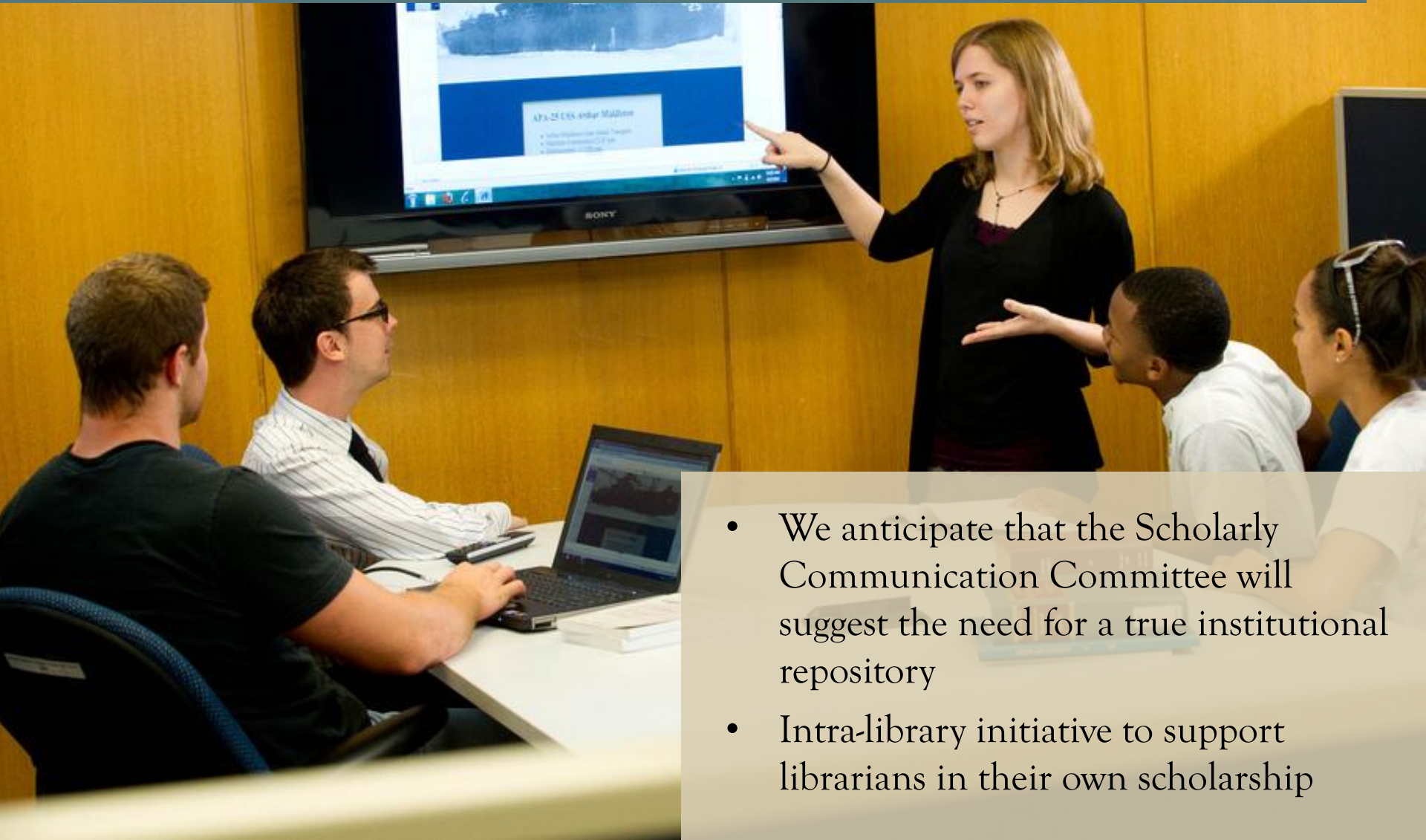


# SCHOLARLY COMMUNICATION SERIES

# CURRENT RESEARCH


- Booklet published yearly to highlight student and faculty publications
- Divided into subcategories indicating publication type (i.e. book, peer reviewed journal, etc.)

# ANTICIPATED RECOMMENDATIONS



- We anticipate that the Scholarly Communication Committee will suggest the need for a true institutional repository
- Intra-library initiative to support librarians in their own scholarship



- 
- A photograph of two men in a library. The man on the left is older, balding, wearing glasses, a dark suit, a red and white checkered shirt, and a striped tie. He is holding a book. The man on the right is younger, with dark hair and a goatee, wearing a blue short-sleeved shirt, a patterned tie, and khaki pants. He is also holding a book. They are standing in front of bookshelves filled with books. In the background, another person is visible, slightly out of focus, reaching for a book on a high shelf. The overall scene is bright and professional.
- Increased campus understanding of the unique and changing nature of scholarly communication
  - Greater collaboration with teaching faculty, thus becoming an increasing essential part of the process of scholarly communication

**THE IMPACT**

**QUESTIONS?**





# PROPOSAL RESOURCES

Anthony J. Fonseca and Van P. Viator. "Escaping the Island of Lost Faculty: Collaboration as a Means of Visibility." *Collaborative Librarianship* 1(3): 84.

Craig Harkema and Brent Nelson. "Scholar-Librarian Collaboration in the Publication of Scholarly Materials." *Collaborative Librarianship* 5(3): 197.

Isaac Gilman and Marita Kunkel. "From Passive to Pervasive: Changing Perceptions of the Library's Role through Intra-Campus Partnerships." *Collaborative Librarianship* 2(1): 22.

Jill Cirasella and Maura A. Smale. "Peers Don't Let Peers Perish: Encouraging Research and Scholarship Among Junior Library Faculty." *Collaborative Librarianship* 3(2):98.

Kara Malenfant. "Integrating Scholarly Communication into Your Library." *ACRL Scholarly Communication Toolkit*. 30 October 2012. <http://scholcomm.acrl.ala.org/node/21>

Kara Malenfant. "Leading Change in the System of Scholarly Communication: A Case Study of Engaging Liaison Librarians for Outreach to Faculty." *College & Research Libraries* (January 2010): 74.

Michael O. Engle. "Moving Beyond the Library Sphere: Academic Librarians in the Larger Institution," in *The Librarian in the University: Essays on Membership in the Academic Community*." Eds. H. Palmer Hall and Caroline Byrd. (Metuchen, NJ: Scarecrow, 1990) p. 12.

R. M. Johnson. "Faculty Status for Academic Librarians: What do Nonteaching Faculty Teach?" *Tennessee Librarian: Quarterly Journal of the Tennessee Library Association* 49(Summer 1997): 9.

# PHOTO CREDITS

Texas A&M University – Commerce  
Marketing Communications

<http://www.flickr.com/tamuc>

North Texas Digital Collection  
from The Franklin County  
Genealogical Society

<http://dmc.tamuc.edu/cdm/compoundobject/collection/franklin/id/67>

Open Access @ UNT

<http://openaccess.unt.edu/symposium/2010>

Texas ETD Association

<http://txetda.wordpress.com/>

