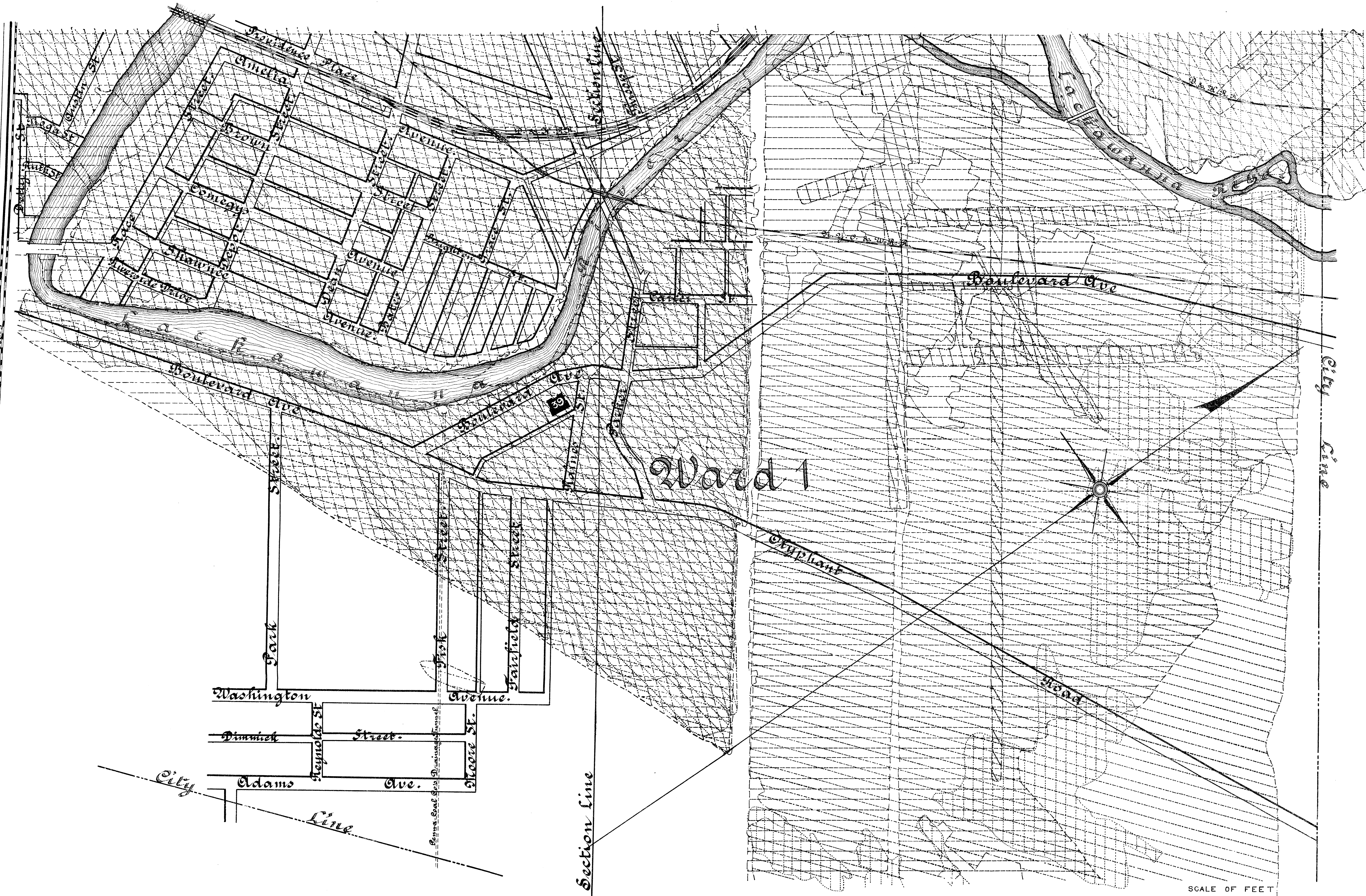
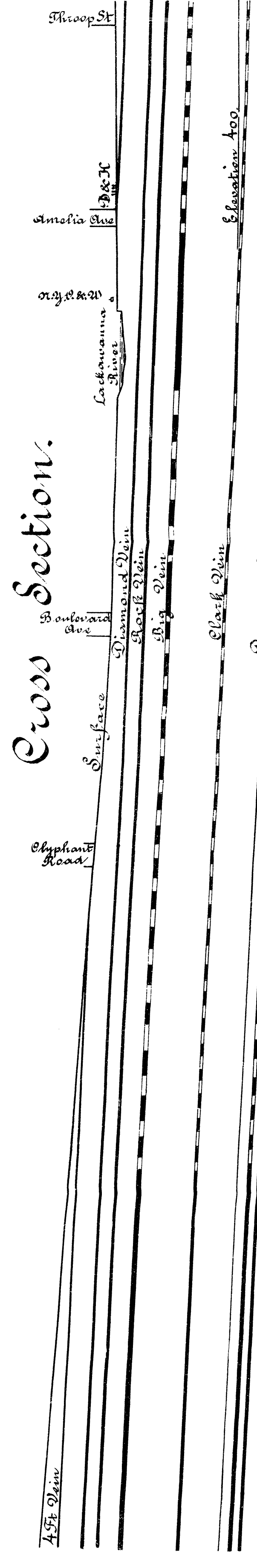


Cross Section.



Nomenclature

	Diamond Vein		Big Vein Top Split		Big Vein Bottom Split		Clark Vein		Dummors N°2		Dummors N°3
--	--------------	--	--------------------	--	-----------------------	--	------------	--	-------------	--	-------------

SCALE OF FEET  
200 0 600

To accompany a report by  
WILLIAM GRIFFITH and ELI T. CONNER,  
1910-11.

MINE WORKINGS UNDER A PART OF THE NORTH EAST SECTION OF THE CITY OF SCRANTON.

The parallel dotted lines indicate the extent of the mine workings in each coal bed. See nomenclature