

Headquarters U.S. Air Force

Integrity - Service - Excellence



***BRAC 2005
DISCUSSION
16 December 2002***

U.S. AIR FORCE



U.S. AIR FORCE

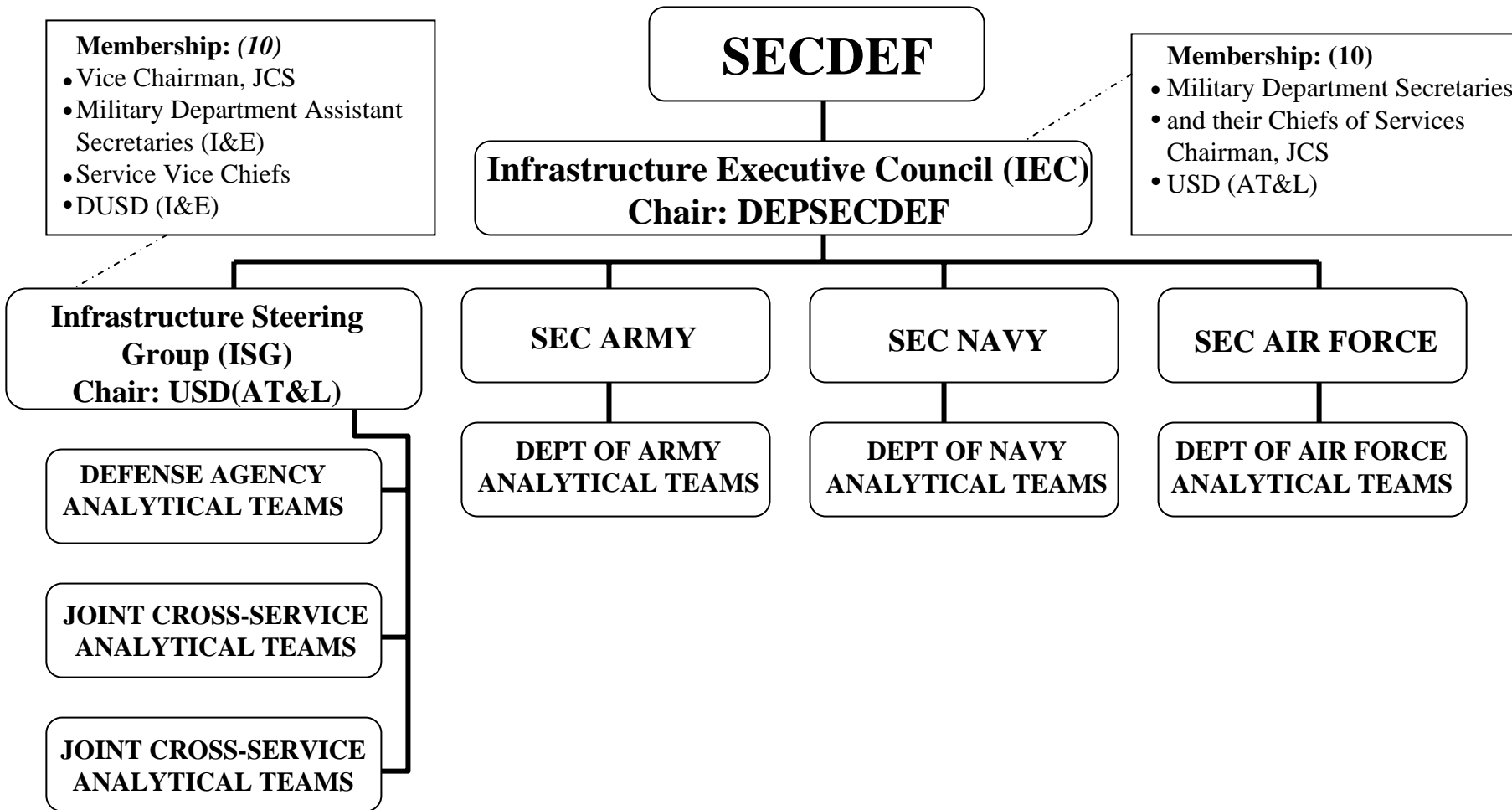
Purpose

- **Discuss BRAC 2005 construct**
- **Gain approval on decision items**
 - **Organizational/analytical framework**
 - **Membership of Base Closure Executive Group (BCEG)**
 - **Corona discussion item**



OSD Organizational Structure

U.S. AIR FORCE





AF Organizational Structure

U.S. AIR FORCE

OSD

AIR FORCE

SECDEF

Infrastructure Executive Council (IEC)
DEPSECDEF
SecAF, CSAF

Infrastructure Steering Group (ISG)
VJCS
SAF/IE, VCSAF

Joint Cross-Service Analytical Teams

VCSAF, SAF/IE

AF JCSG Coordinator

Working Groups TBD

SecAF, CSAF

SAF/IE

DAS & GO Co-Chairs
Base Realignment & Closure Executive Group
Composed of GOs & SESs

AF BRAC Division

MAJCOM Data

(XP)
Force Structure Key Considerations

XP
XO
IL
XI
etc.
INPUTS

Integrity - Service - Excellence



U.S. AIR FORCE

Strategic Key Considerations ***(Examples)***

- **New Defense Strategy/Force Sizing Construct**
 - **EAF Construct**
 - **CONUS / OCONUS Force Rotation**
 - **Overseas Posture**
 - **Homeland Defense**
 - **Anti-Terrorist / Force Protection**
 - **Consolidation of Like Capabilities**
 - **Active / ARC Force Mix and Capabilities**



U.S. AIR FORCE

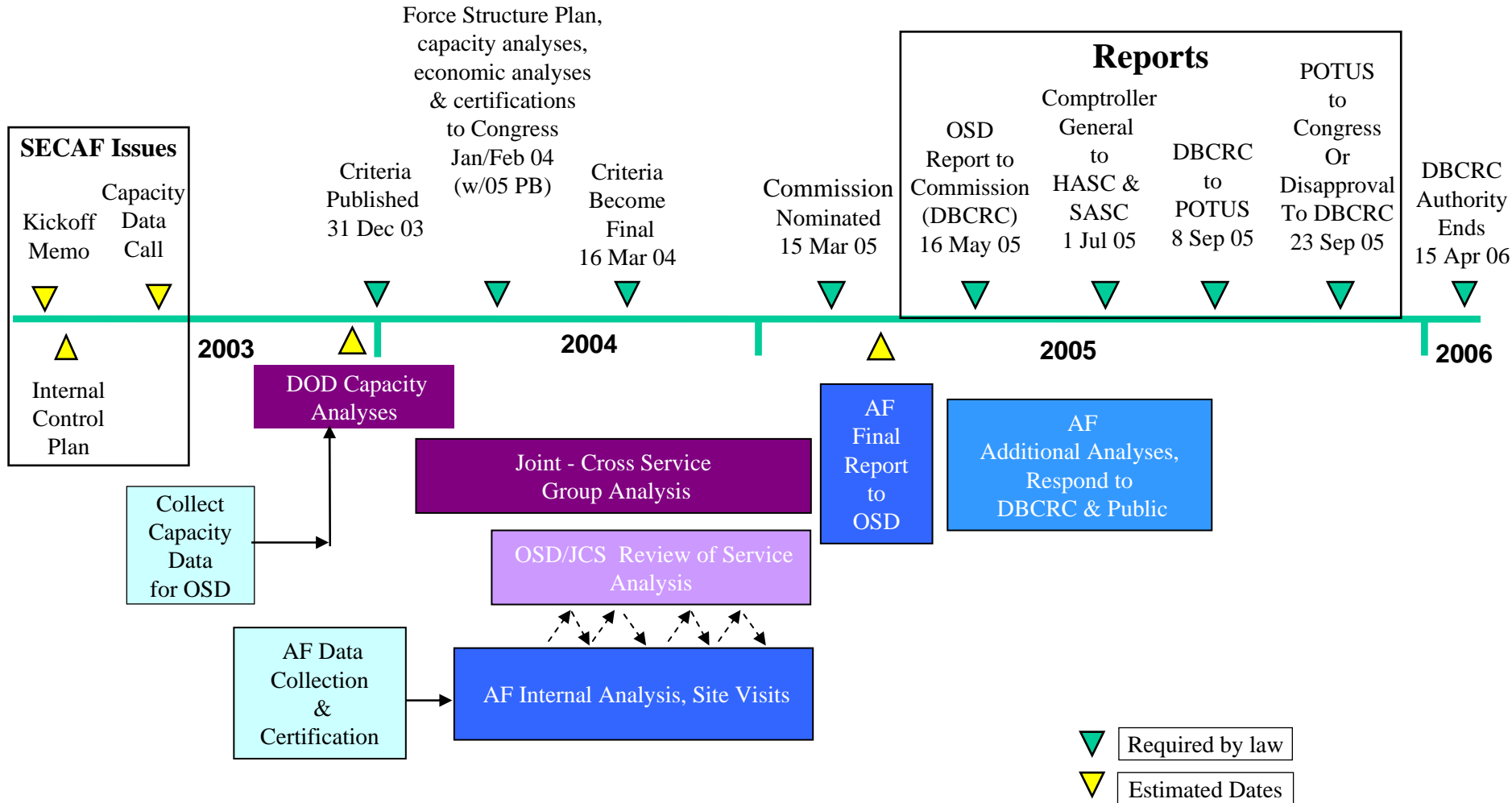
Strategic Key Considerations ***(Examples con't)***

- **New Weapon System Beddowns**
- **Ranges and Airspace**
- **Environmental**
- **Encroachment**
- **Growth Potential Space Access & Control Issues**
- **Outsourcing and Privatization**
- **Regionalization**
- **Joint Basing**
- **Joint Training and Experimentation**
- **Executive Agency / Lead Service**
- **Transformation: Combat and Business**



U.S. AIR FORCE

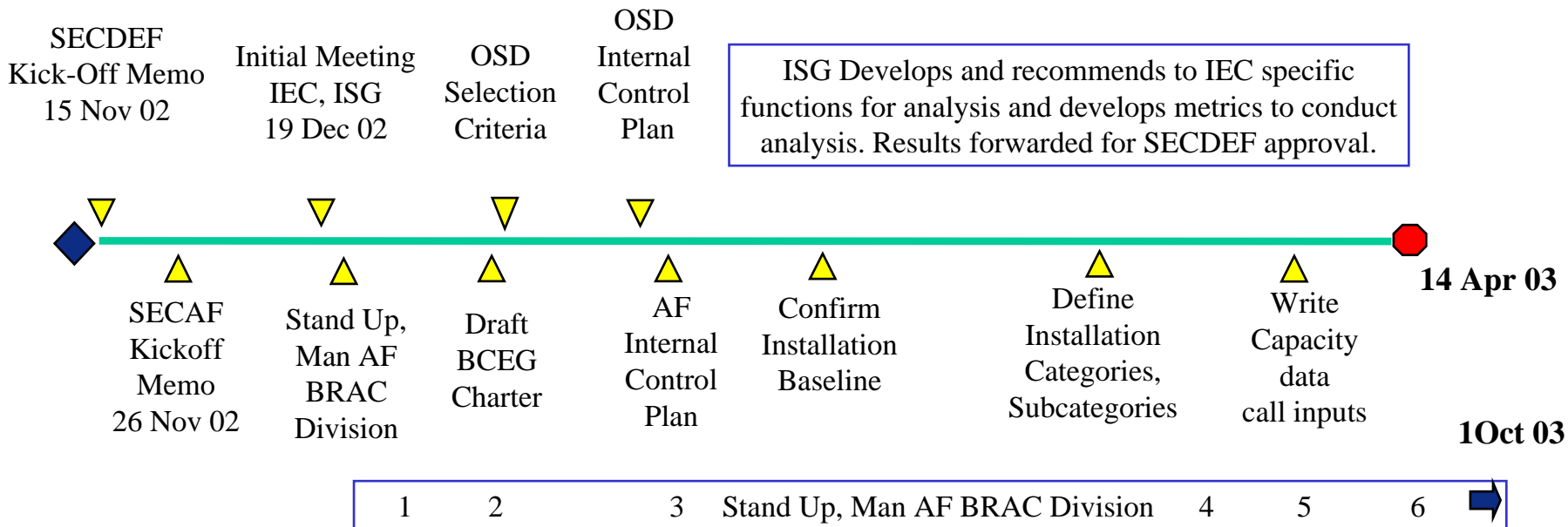
Estimated BRAC 2005 Timeline





150 Day Timeline

U.S. AIR FORCE



Terms:

JCS – Joint, Cross-Service

IEC- Infrastructure Executive Council

ISG – Infrastructure Steering Group

BCEG – Base Closure Executive Group

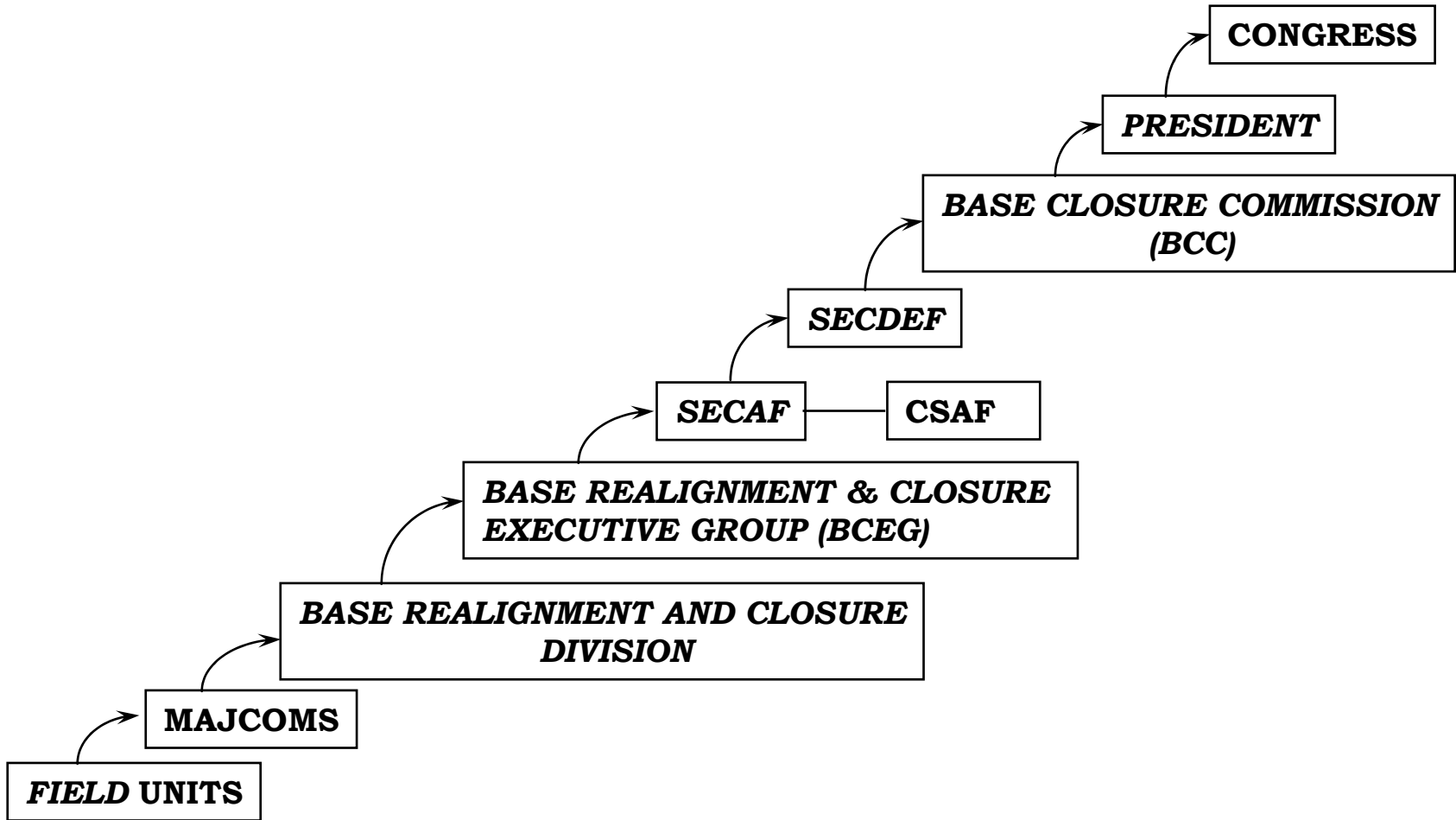


Estimated Dates



U.S. AIR FORCE

AF Data Collection and Analytical Process





Base Closure Executive Group

U.S. AIR FORCE

- Established by SECAF to provide recommendations that are in compliance with BRAC legislation
- DAS & General Officer (XP) - Co-Chairs & Voting Members – Additional GO position required

Other Voting Members

Operations

Installation Policy

Installation/Logistics

Air Force Reserve

Air National Guard

Non Voting Members

General Counsel

Financial Management

Personnel

Acquisition

Environmental Safety &

Occupational Health

All General Officers or SESs

ADHOC Advisors as Required (e.g., SG, TE, etc.)

- Conducts analysis in accordance with OSD and AF Internal Control Plans
- Provides support for JCS analysis



Decision Items

U.S. AIR FORCE

- **Organizational/analytical framework**
- **Membership for Base Closure Executive Group (BCEG)**
- **BRAC as a CORONA Topic**



U.S. AIR FORCE

Back Up Slides

SECAF BRIEFING 16 December 2002



Internal Control Plan (ICP)

U.S. AIR FORCE

- **Purpose - Establishes process and management controls for entire BRAC process**
- **Required to meet statutory requirement for auditability of information and process(es) used in BRAC**
- **Includes:**
 - **Participants & responsibilities**
 - **Structure for analysis**
 - **Procedures for documenting processes, data, changes & decisions**
 - **Uniform guidance on sources and methods of collecting data**
 - **Systems for verifying the accuracy of data at all levels of command**
 - **Descriptions of tools, systems and documents**
 - **Procedures for categorizing bases**
 - **Includes non-disclosure statement for all participants**
- **Bottom Line: All data used in analysis must be certified, audited, and made available to the commission and the public upon release of the BRAC recommendations**



U.S. AIR FORCE

Selection Criteria Must Include the Following as a Minimum

- **Military Value Primary Consideration**
 - **Preservation of training areas, guarantee future availability to ensure readiness of the Armed Forces**
 - **Preservation of military installations in the US as staging areas in homeland defense missions**
 - **Preservation of military installations throughout a diversity of climate & terrain in the US for training purposes**
 - **Impact on joint warfighting, training, and readiness**
 - **Ability to accommodate contingency mobilization and future total force requirements at existing and potential receiving locations**



U.S. AIR FORCE

Selection Criteria Must Include the Following as a Minimum

■ **Return on Investments**

- **Extent and timing of potential costs and savings including number of years for savings to exceed the costs. (The cost and manpower implications)**
- **Must account for cost to other federal agencies if impacted by proposed closure or realignment**

■ **Impacts**

- **Economic impact on the communities**
- **Ability of both existing and receiving communities infrastructure to support forces mission and personnel**
- **The Impact of costs related to environmental restoration, waste management, and environmental compliance**



OSD Kick Off Memo

U.S. AIR FORCE

- **OSD establishes two oversight groups for BRAC 2005**
 - **Infrastructure Executive Council (IEC) for policy making and oversight of the entire BRAC process**
 - **Infrastructure Steering Group (ISG) directly oversees the joint cross-service groups analyses of common business oriented functions and integration of results into services processes**
- **Joint Cross-Service Teams will analyze common business oriented support functions.**
- **Military Departments will analyze all service unique functions**
- **Military Departments recommend force structure options that support the force structure plan required by BRAC statute**
- **Infrastructure Support Group (ISG) will recommend to Infrastructure Executive Council (IEC) specific functions for joint analysis and metrics to conduct analysis (150 days)**



10 USC Section 2687 Limits

U.S. AIR FORCE

- **PL 107-107 (BRAC 2005) only authority for actions above thresholds set in 10 USC 2687:**
 - **Closure of installation with \geq 300 DoD, permanent direct-hire civilian authorizations**
 - **Realignment if action *reduces* the lower of:**
 - **1000 or more civilian authorizations or**
 - **50% or more of civilian authorizations (i.e. 150 or more)**
- **“Installation” includes:**
 - **Base, camp, post, station, yard, center, homeport facility for any ship, or other activity under DoD including any leased facility, in United States, DC, Puerto Rico, American Samoa, the Virgin Islands, or Guam.**