



Log In

There are currently 4,201 articles

DIGITIZING TEXAS HISTORY

Scrapbooks

I have physical checked scrapbooks with various items and content. Scrapbooks are archival books that hold unique features. They contain large amounts of information, content, and material. It is recommended to photograph every foldout to see hidden details, photographs, booklets, etc. Scrapbooks are scanned and processed on the Phase 1 camera system.

Books

Books can be scanned and processed on a variety of scanners such as, Copibook 1 scanner, Phase 1 camera system, alongside Fujitsu scanners, Opticbook and Bookedge. Each tool fulfills the purpose of digitizing each book and preserves the original copy. Having the digital copy of the books ensures students, teachers, and others gain access to it through The Portal to Texas History.

Videos

Videotaped interviews are available for students, educators, researchers, and the public to easily access and acquires part of preserved history. Most interviews share experiences, personal stories, and discussions within Texas history. These videos can be found on The Portal to Texas History.

35 mm Slides

35 mm slides are scanned on Sony 1 and Sony 2. These camera systems scan an image variety of transmissive material, color positives and negative 35 mm film and slides. After scanning, each item is processed on Adobe Lightroom and Photoshop to create accurate images of the original item.

Documents

These can vary from official government documents, letters, NVMD reports, and other forms of printed information. Documents are commonly scanned using Phase 1 camera system, CopiBook 1 scanner, and the Fujitsu scanner.

Blueprints

Blueprints are processed and scanned on the Phase 1 camera system. They are commonly very large documents and require a spacious area to be photographed. These documents can vary from commercial, residential historic blueprints, diagrams, or designs.

Photographs

Photographs can be scanned and processed on EPSON scanner and Phase 1 camera system. Sizes vary as well as resolution. Photographs that are smaller than 3 X 5 are photographed at 1000 ppi. Anything larger are shot at 600 ppi.

Unique Items

These items were unique and interesting to scan and process. Each item had their own scanning and processing system, but are digitized for The Portal to Texas History.

Programs/Softwares



Photoshop is a software used for post-export editing, adjusting levels for accurate brightness and colors, and adjusting main key tones.



Capture One is a professional software used for the Phase 2 camera system. This program provides a live view of your photographing process and allows for batch naming, editing, and high resolution images.



Limb Capture is a software that enables books, document, and journals to be digitized and provide enhanced quality images with I2S equip.



Scan Tailor is a post-processing software that deskews, crops, and adds/removes borders of scanned books or docs.



Remote is an application that projects a live preview of your image onto the computer. You can adjust the shutter speed, aperture, and shoot images through the application.



Adobe Bridge is a software that organizes recent, previous and future projects. You can view, edit, rename, and preview projects all through this software.

How To's

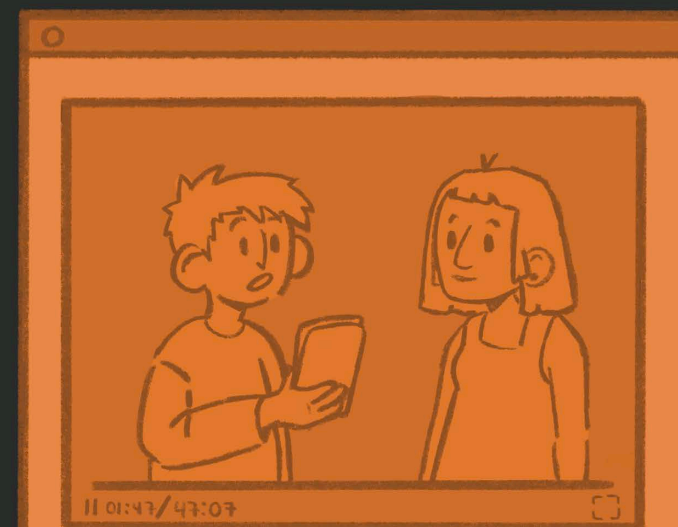
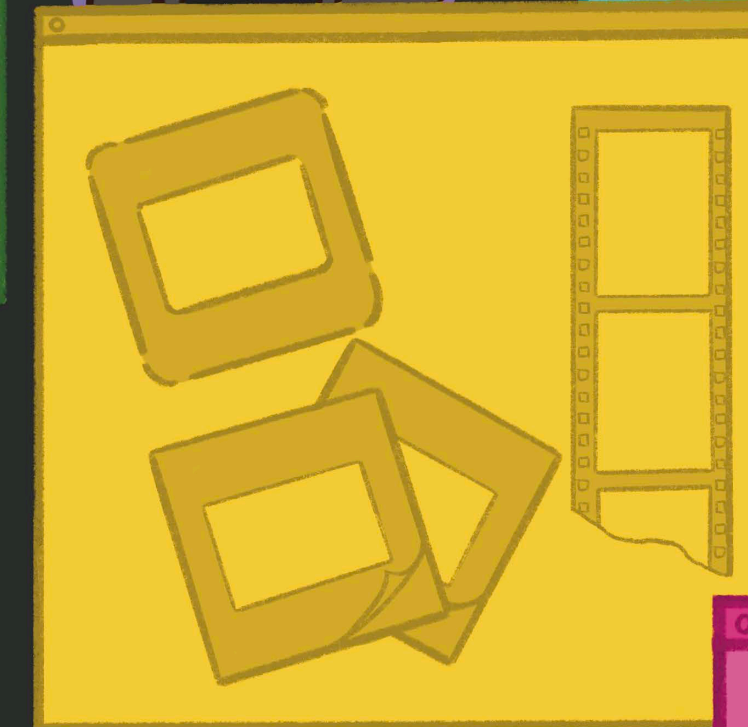
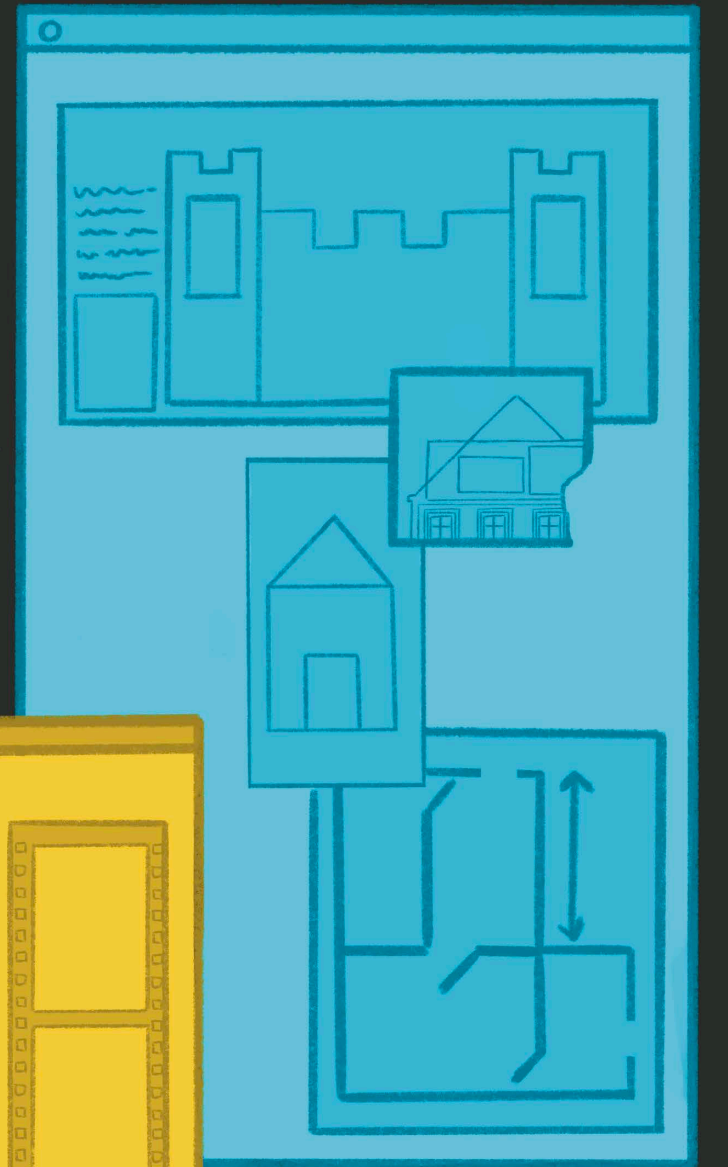
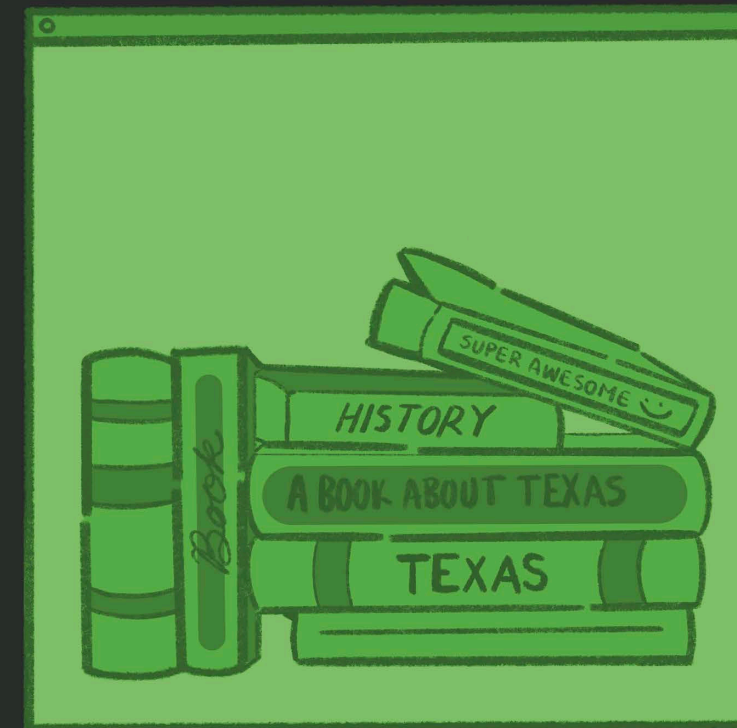
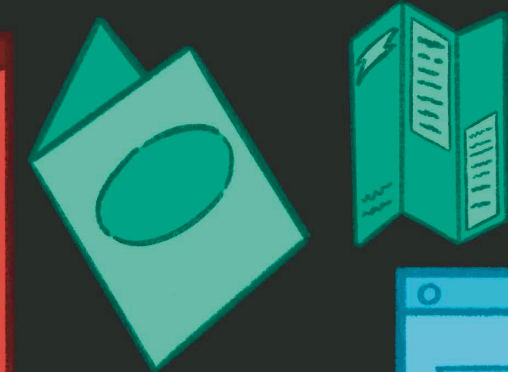
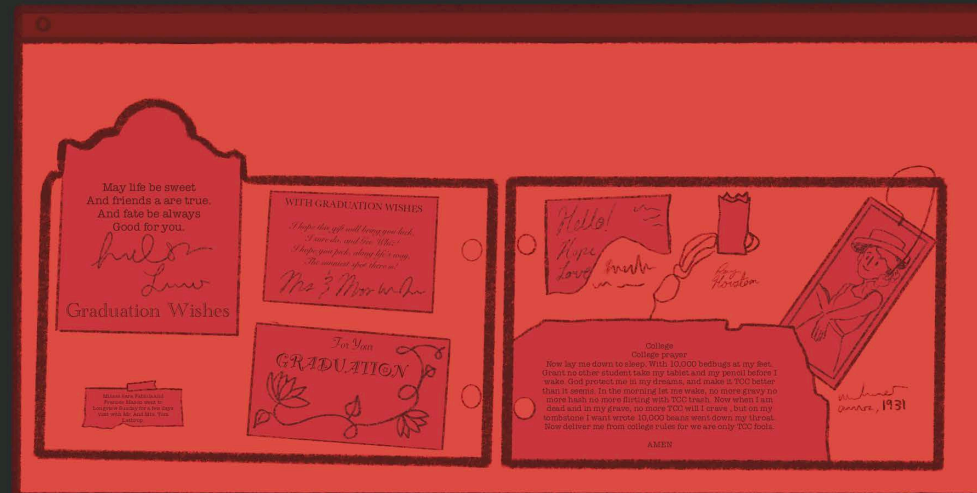
Computer Set-Up
Tutorials: Scanning | Workflow | Software | Equipment

Portals

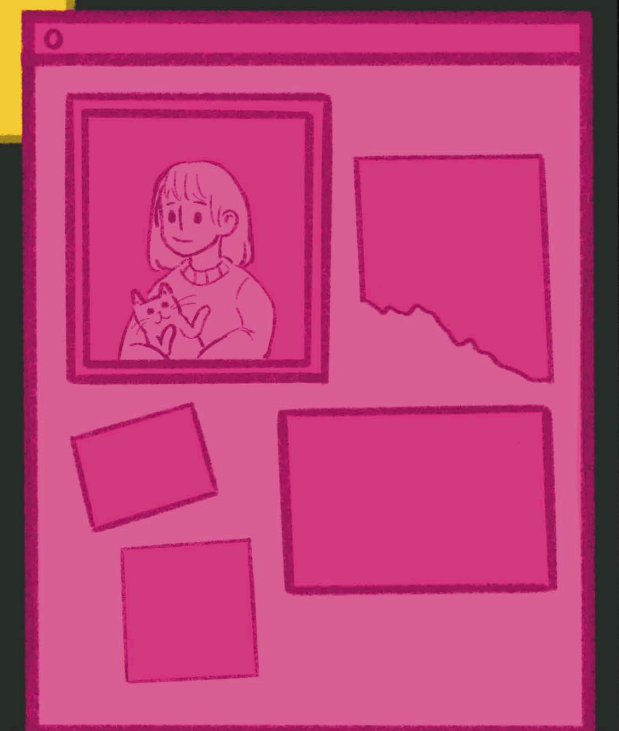
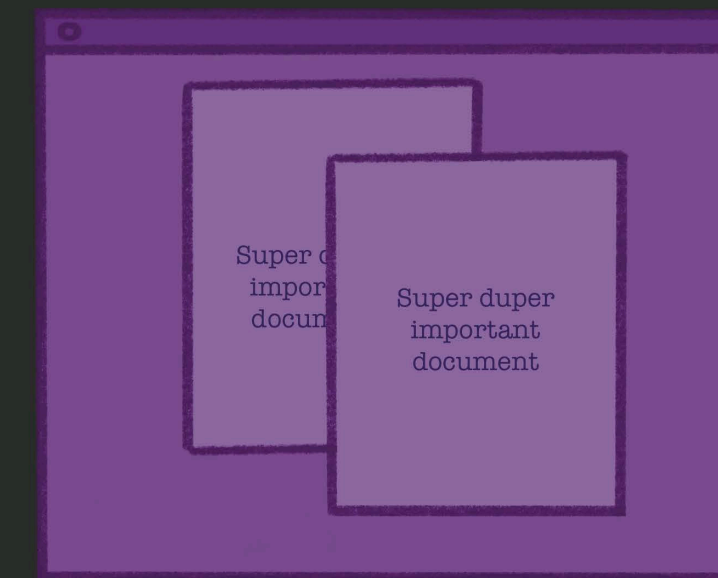
Student Portal
Staff Portal

Workflow Queues

Metadata | OCR | Upload
Newspaper OCR | Newspaper Upload



00:00:10 Hello!
00:00:12 Hi!



Search icon

Br Ps Lr