



CHOOSE YOUR PLATFORM

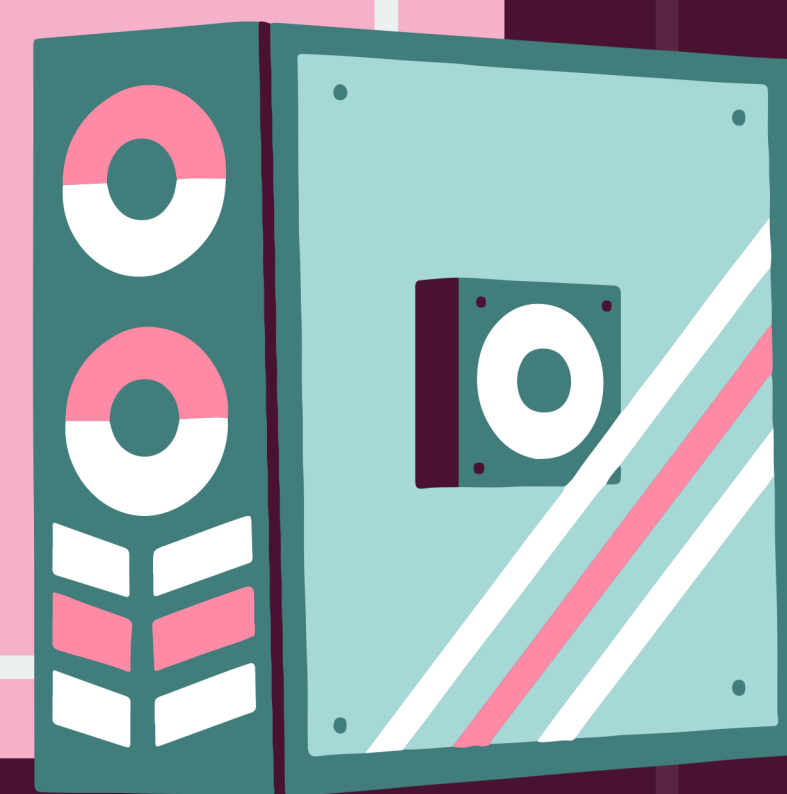
GAMING AT THE MEDIA LIBRARY

CREATED BY EMILY CHASE, RYAN CARR, AND MIALANI HIGA



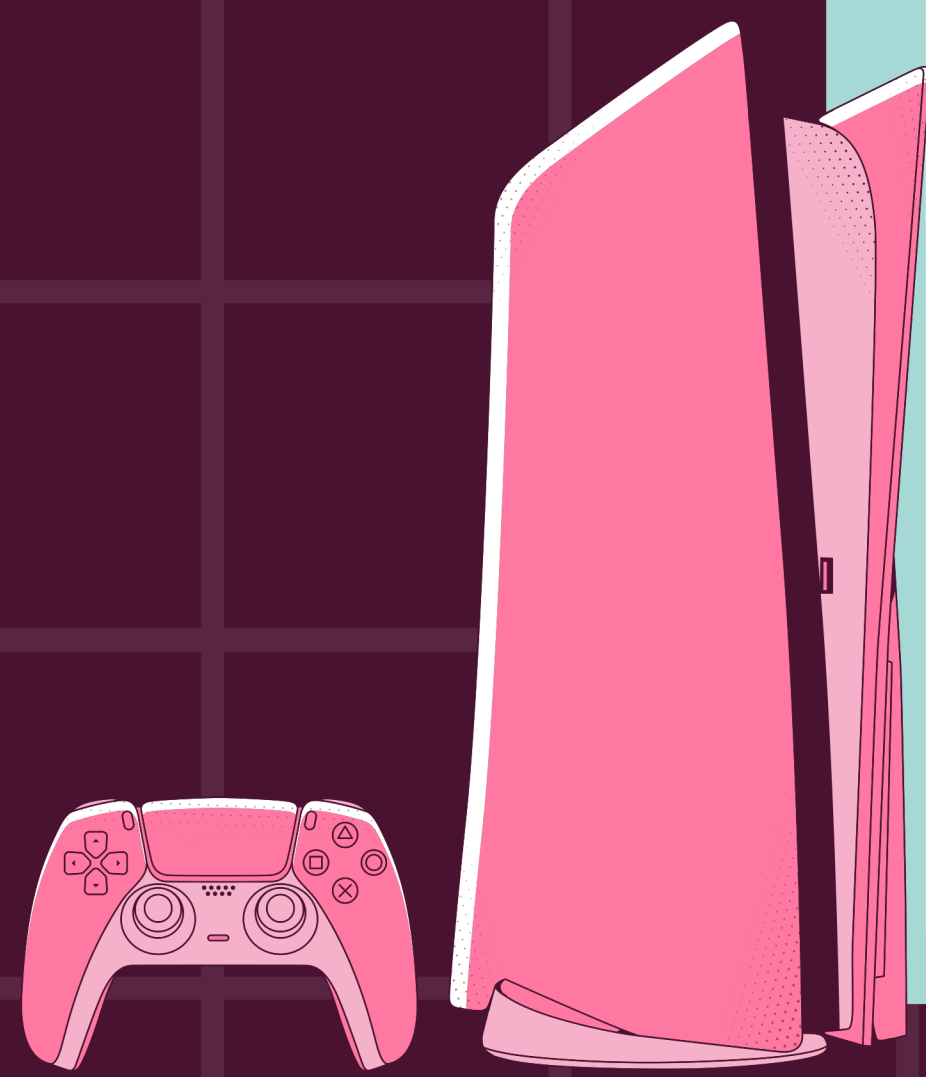
OUR COMMUNITY

At the Media Library, we strive to create a community for patrons with a common interest in gaming. We offer numerous sources of media that allows patrons to explore different types of consoles and games. We also host a variety of events to engage patrons including Tabletop Time, the Doc Spot Film Series, Spooktacular, and other events throughout the year. In order to update our patrons on events, we have a Discord server that allows patrons to interact with each other and view announcements. As student assistants, we contribute to this community through troubleshooting equipment issues, engaging with patrons at events, and monitoring the space to give the best experience for the patrons.



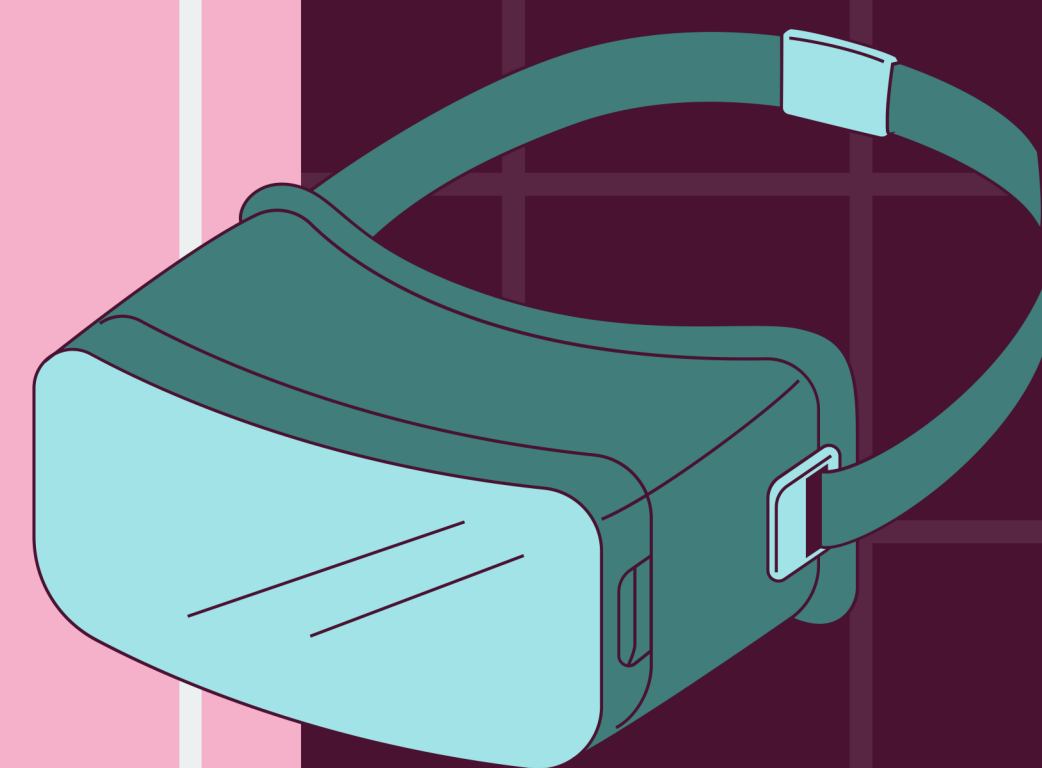
CONSOLES AND COMPUTERS

We provide a number of video game consoles, both new and old for our community to utilize. Our consoles are available to use in the library and can be checked out. This allows our patrons to interact with each other inside and outside our space. We offer the latest gaming systems such as the PlayStation 5, Xbox Series X, and the Nintendo Switch. However, we also have older gaming systems that patrons can enjoy like the Wii. And thanks to the gaming PC's set up in our designated space called the Nest, patrons can connect with others and expand the community even further. Overall, we have numerous gaming systems that everyone can enjoy.



VIRTUAL REALITY

As virtual reality (VR) is advancing as an educational tool as well as a source of entertainment, it is significant that the Media Library offers a variety of VR headsets for students, faculty, and staff to utilize. We have VR headsets that are available to use in house and that can be checked out for outside use. We offer various VR headsets such as the Valve Index, Sony PlayStation VR, Oculus Quest, HTC Vive Pro, and the Oculus Rift. Our wide collection of VR hardware allows patrons to experience virtual reality in various forms. Furthermore, our community can interact and experiment with the different types of VR we offer.



HANDHELD CONSOLES

Our space houses a variety of handheld consoles for checkout. The Steam Deck is the newest addition in our collection and essentially serves as a portable gaming computer. The older handheld consoles, like the Nintendo DS, are a great way to experience the classic games once more and share the nostalgic interest with others. Most handheld consoles are for single player games, but the Nintendo Switch is a great system that allows for local multiplayer gaming. In this way, the handheld consoles contribute our community through allowing patrons to play both online multiplayer and locally in our space.

