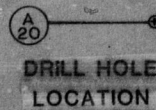
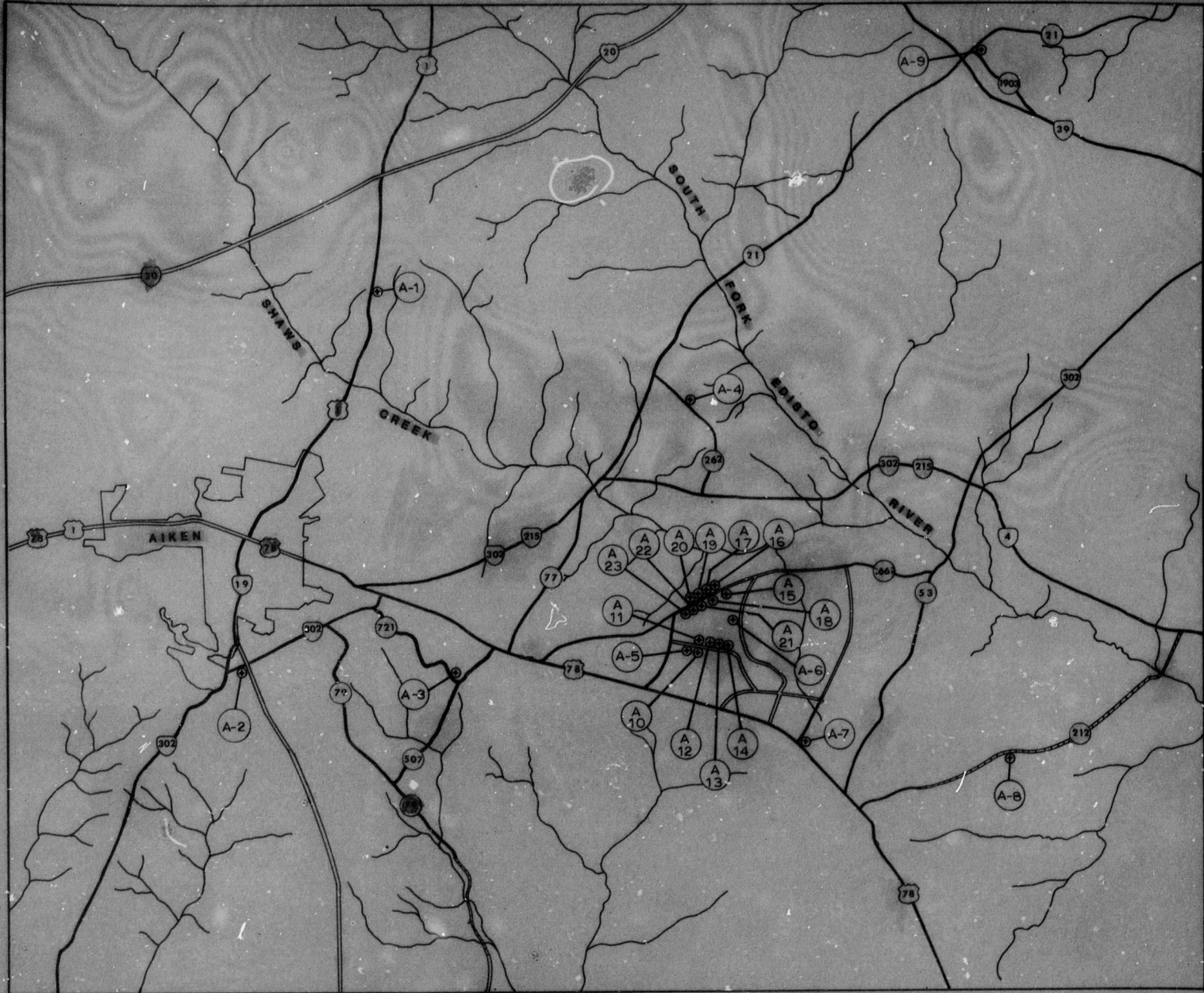


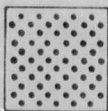
## APPENDIX D-2: GRAPHIC LITHOLOGIC LOGS OF AIKEN COUNTY CORES

DRILL HOLE NUMBER	TOTAL DEPTH (FEET)	TOTAL DEPTH (METERS)
A-1	151.0	46.0
A-2	207.0	63.1
A-3	211.0	64.3
A-4	300.0	91.4
A-5	56.0	17.1
A-6	50.5	15.4
A-7	184.0	56.1
A-8	403.5	123.0
A-9	278.0	84.7
A-10	60.0	18.3
A-11	60.0	18.3
A-12	53.5	16.3
A-13	54.5	16.6
A-14	55.5	16.9
A-15	60.0	18.3
A-16	60.0	18.3
A-17	41.0	12.5
A-18	60.0	18.3
A-19	60.0	18.3
A-20	25.0	7.6
A-21	60.0	18.3
A-22	60.0	18.3
A-23	60.0	18.3

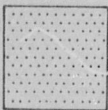


INDEX MAP OF DRILL HOLE LOCATIONS, AIKEN COUNTY, S. C.

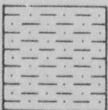
# LEGEND



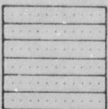
PEBBLES



SAND



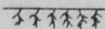
CLAYEY SAND



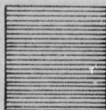
SANDY CLAY



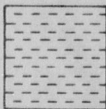
GORCEIXITE  
NODULES



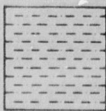
PLANT ROOTS



CLAY



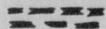
KAOLINITE



SANDY KAOLINITE



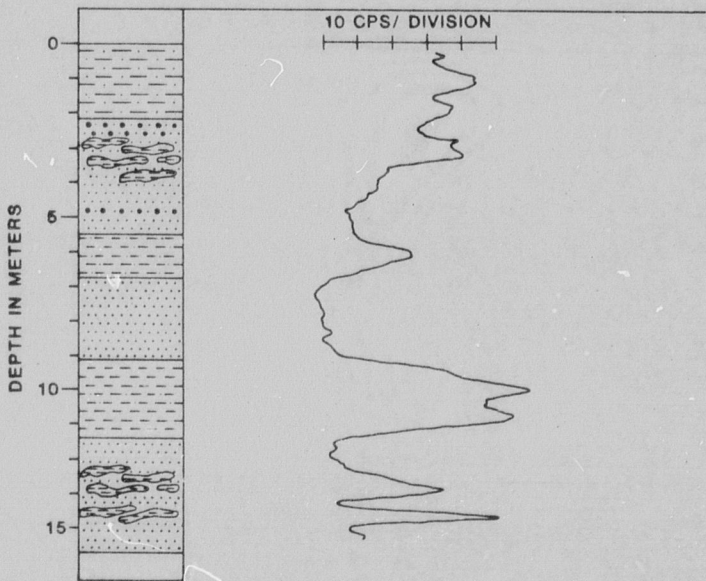
KAOLINITE LENS



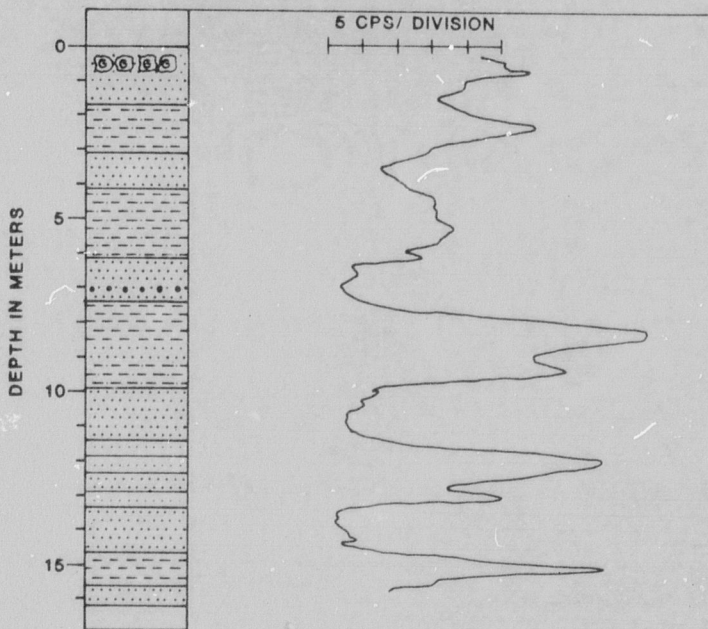
WOOD AND  
WOOD FIBERS

Graphic Lithologic Logs for Drillholes A-1 through A-9 are on the second microfiche for Appendix D-2.

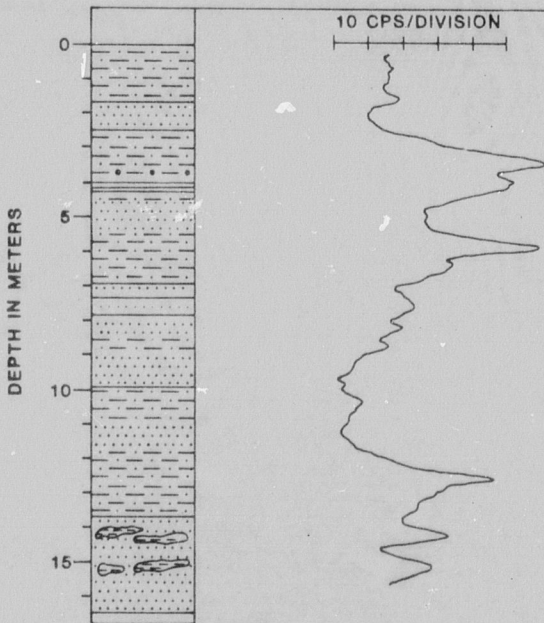
STATE: S. C. COUNTY: AIKEN  
HOLE: A-10 COLLAR ELEVATION: 115.8 M  
HOLE STARTED: 10/16/79 DRILLER: F. JONES  
HOLE COMPLETED: 10/16/79 DRILL DEPTH: 18.3 M  
CORED INTERVAL: 0-18.3 M LOG DEPTH: 15.2 M  
% CORE RECOVERY: 91% BIT SIZE: 5.5"  
PROBE: G-375-A DETECTOR: 1.5" X 0.5" NAI  
LOGGED BY: P. A. THAYER



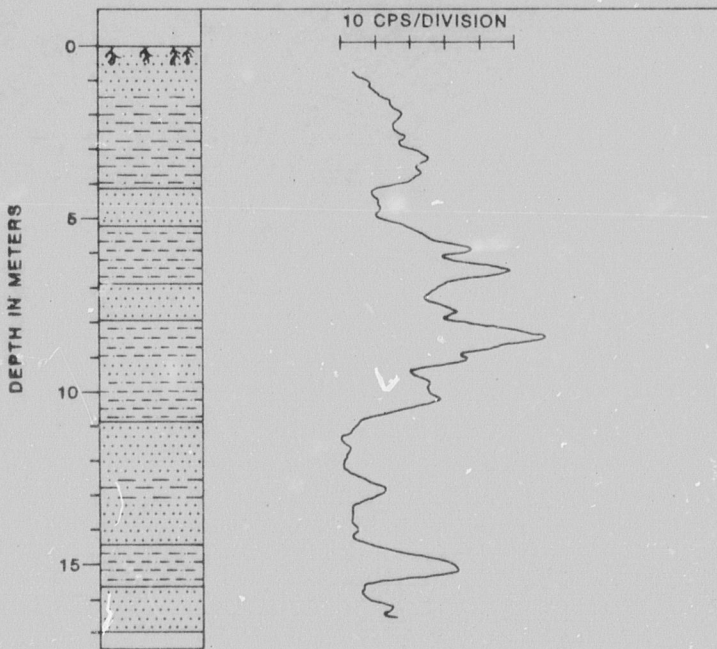
STATE: S. C. COUNTY: AIKEN  
HOLE: A-11 COLLAR ELEVATION: 114.3 M  
HOLE STARTED: 10/16/79 DRILLER: F. JONES  
HOLE COMPLETED: 10/16/79 DRILL DEPTH: 18.3 M  
CORED INTERVAL: 0-18.3 M LOG DEPTH: 14.7 M  
% CORE RECOVERY: 100% BIT SIZE: 5.5"  
PROBE: G-375-A DETECTOR: 1.5" X 0.5" NAI  
LOGGED BY: P. A. THAYER



STATE: S. C. COUNTY: AIKEN  
HOLE: A-12 COLLAR ELEVATION: 116.1 M  
HOLE STARTED: 10/16/79 DRILLER: F. JONES  
HOLE COMPLETED: 10/16/79 DRILL DEPTH: 16.3 M  
CORED INTERVAL: 0-16.3 M LOG DEPTH: 15.6 M  
% CORE RECOVERY: 100% BIT SIZE: 5.5"  
PROBE: G-375-A DETECTOR: 1.5" X 0.5" NAI  
LOGGED BY P. A. THAYER

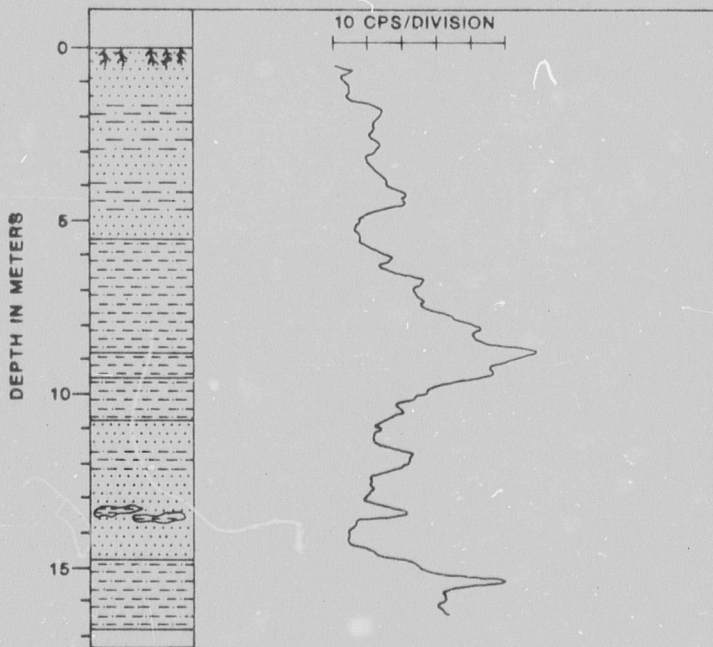


STATE: S. C. COUNTY: AIKEN  
HOLE: A-13 COLLAR ELEVATION: 119.8 M  
HOLE STARTED: 10/17/79 DRILLER: F. JONES  
HOLE COMPLETED: 10/17/79 DRILL DEPTH: 16.6 M  
CORED INTERVAL: 0-16.6 M LOG DEPTH: 16.5 M  
% CORE RECOVERY: 96% BIT SIZE: 5.5"  
PROBE: G-375-A DETECTOR: 1.5" X 0.5" NAI  
LOGGED BY: P. A. THAYER

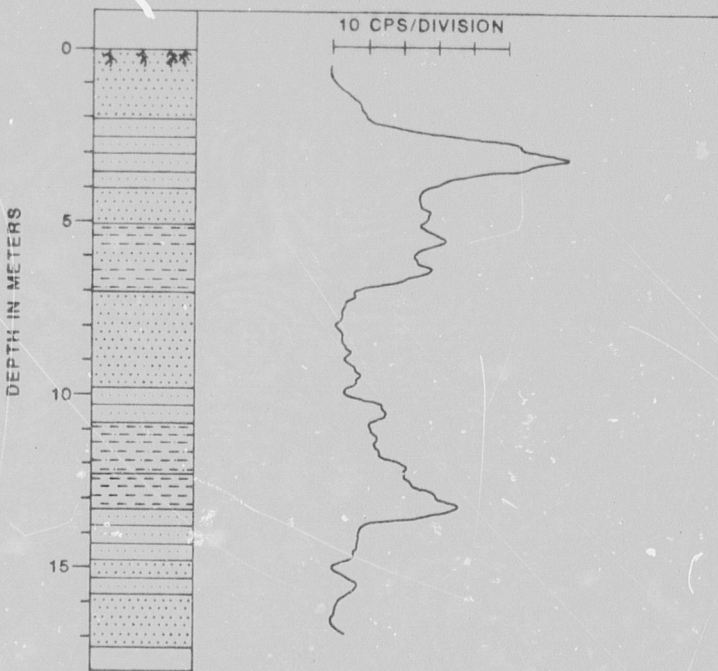




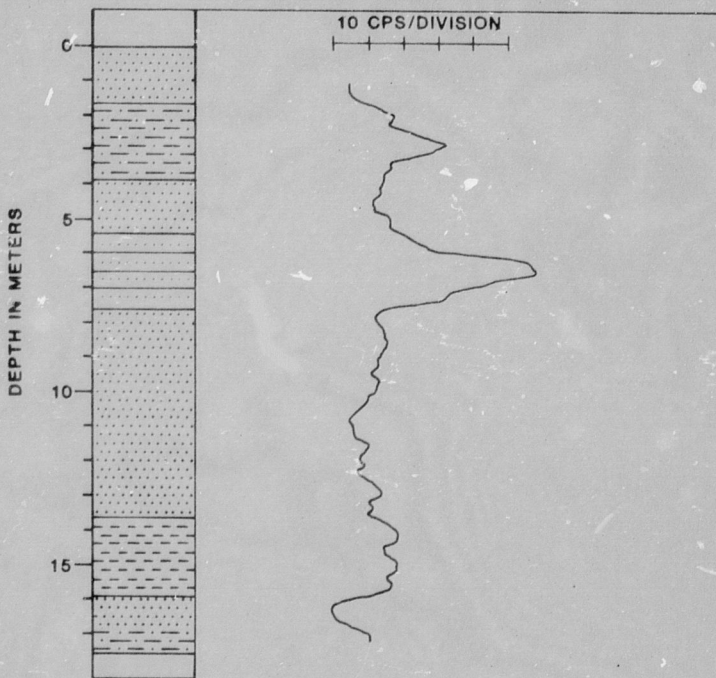
STATE: S. C. COUNTY: AIKEN  
HOLE: A-14 COLLAR ELEVATION: 121.0 M  
HOLE STARTED: 10/17/79 DRILLER: F. JONES  
HOLE COMPLETED: 10/17/79 DRILL DEPTH: 16.9 M  
CORED INTERVAL: 0-16.9 M LOG DEPTH: 16.3 M  
% CORE RECOVERY: 100% BIT SIZE: 5.5"  
PROBE: G-375-A DETECTOR: 1.5" X 0.5" NAI  
LOGGED BY: P. A. THAYER



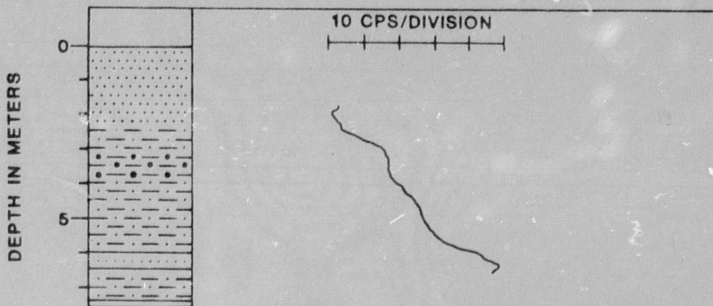
STATE: S. C. COUNTY: AIKEN  
HOLE: A-15 COLLAR ELEVATION: 121.9 M  
HOLE STARTED: 10/18/79 DRILLER: F. JONES  
HOLE COMPLETED: 10/18/79 DRILL DEPTH: 18.3 M  
CORED INTERVAL: 0-18.3 M LOG DEPTH: 16.8 M  
% CORE RECOVERY: 97% BIT SIZE: 5.5"  
PROBE: G-375-A DETECTOR: 1.5" X 0.5" NAI  
LOGGED BY: P. A. THAYER



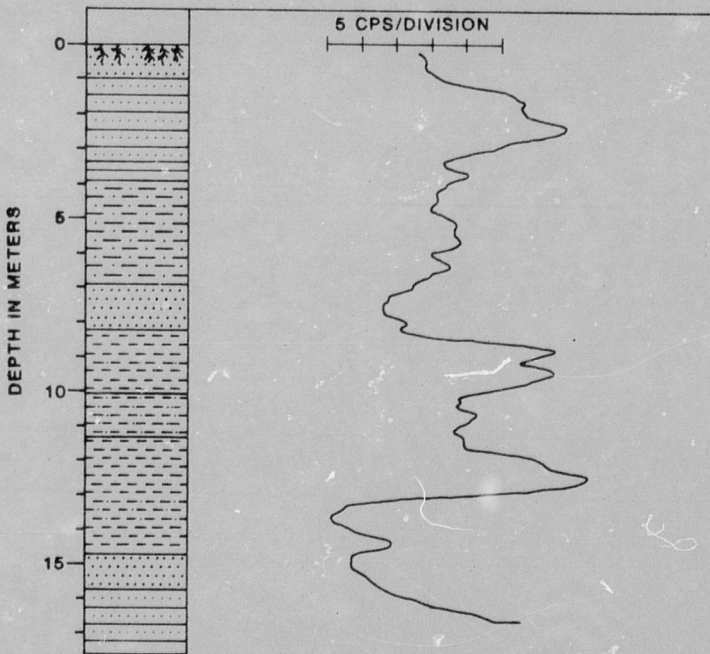
STATE: S. C. COUNTY: AIKEN  
HOLE A-16 COLLAR ELEVATION: 122.5 M  
HOLE STARTED: 10/18/79 DRILLER: F. JONES  
HOLE COMPLETED: 10/18/79 DRILL DEPTH: 18.3 M  
CORED INTERVAL: 0-18.3 M LOG DEPTH: 17.2 M  
% CORE RECOVERY: 83% BIT SIZE: 5.5"  
PROBE: G-375-A DETECTOR: 1.5" X 0.5" NAI  
LOGGED BY: P. A. THAYER



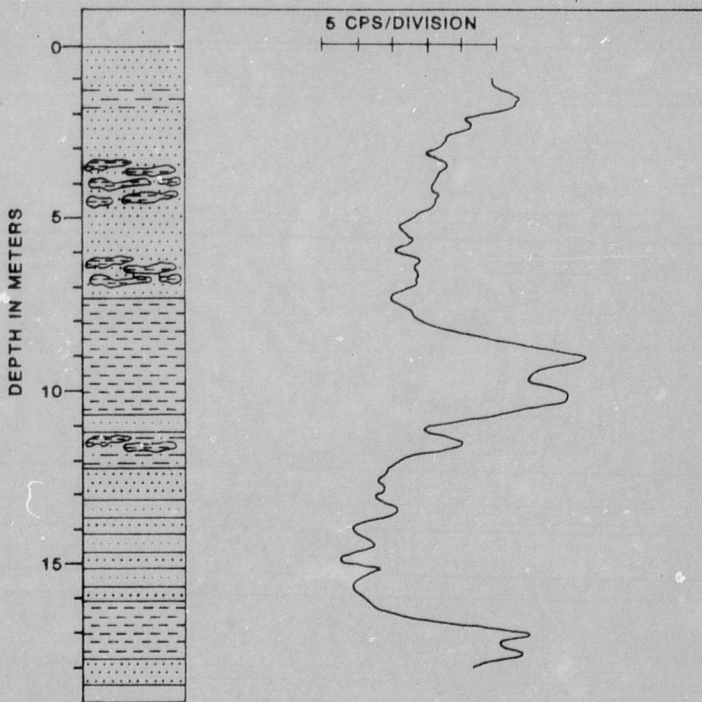
STATE: S. C. COUNTY: AIKEN  
HOLE: A-17 COLLAR ELEVATION: 121.9 M  
HOLE STARTED: 10/18/79 DRILLER: F. JONES  
HOLE COMPLETED: 10/18/79 DRILL DEPTH: 12.5 M  
CORED INTERVAL: 0-12.5 M LOG DEPTH: 6.6 M  
% CORE RECOVERY: 73% BIT SIZE: 5.5"  
PROBE: G-375-A DETECTOR: 1.5" X 0.5" NAI  
LOGGED BY: P. A. THAYER



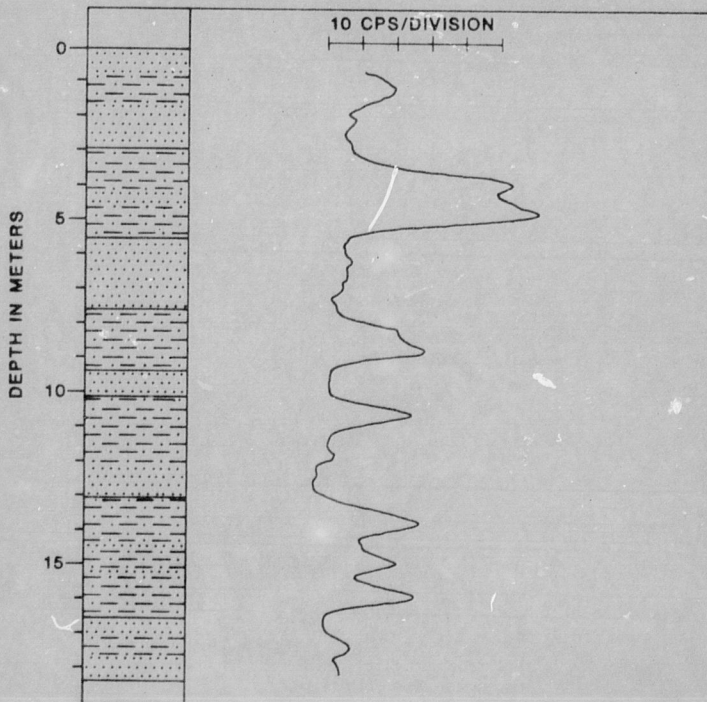
STATE: S. C. COUNTY: AIKEN  
HOLE: A-18 COLLAR ELEVATION: 118.0 M  
HOLE STARTED: 10/19/79 DRILLER: F. JONES  
HOLE COMPLETED: 10/19/79 DRILL DEPTH: 18.3 M  
CORED INTERVAL: 0-18.3 M LOG DEPTH: 16.6 M  
% CORE RECOVERY: 85% BIT SIZE: 5.5"  
PROBE: G-375-A DETECTOR: 1.5" X 0.5" NAI  
LOGGED BY: P. A. THAYER



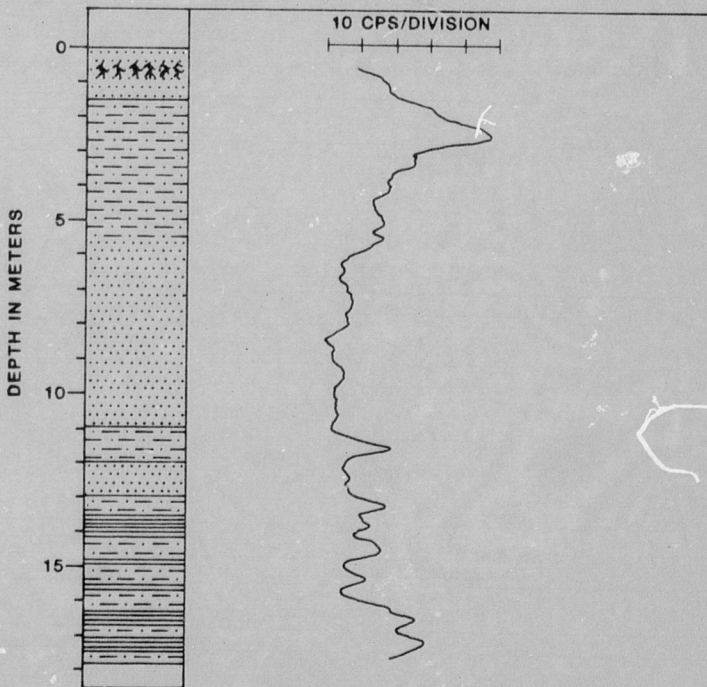
STATE: S. C. COUNTY: AIKEN  
HOLE: A-19 COLLAR ELEVATION: 116.1 M  
HOLE STARTED: 10/19/79 DRILLER: F. JONES  
HOLE COMPLETED: 10/19/79 DRILL DEPTH: 18.3 M  
CORED INTERVAL: 0-18.3 M LOG DEPTH: 17.9 M  
% CORE RECOVERY: 96% BIT SIZE: 5.5"  
PROBE: G-375-A DETECTOR: 1.5" X 0.5" NAI  
LOGGED BY: P. A. THAYER



STATE: S. C. COUNTY: AIKEN  
HOLE: A-20 COLLAR ELEVATION: 112.8 M  
HOLE STARTED: 10/19/79 DRILLER: F. JONES  
HOLE COMPLETED: 10/20/79 DRILL DEPTH: 18.9 M  
CORED INTERVAL: 0-18.9 M LOG DEPTH: 18.1 M  
% CORE RECOVERY: 76% BIT SIZE: 5.5"  
PROBE: G-375-A DETECTOR: 1.5" X 0.5" NAI  
LOGGED BY: P. A. THAYER

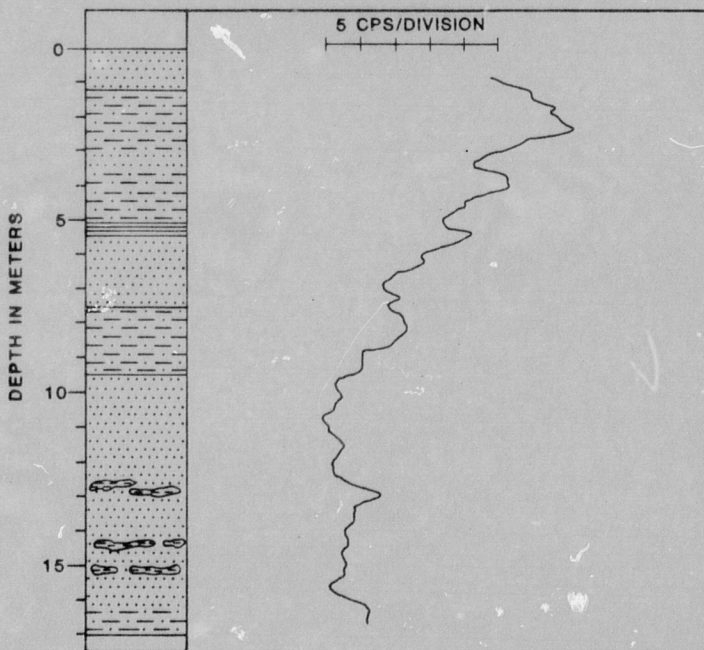


STATE: S. C. COUNTY: AIKEN  
HOLE: A-21 COLLAR ELEVATION: 117.0 M  
HOLE STARTED: 10/20/79 DRILLER: F. JONES  
HOLE COMPLETED: 10/20/79 DRILL DEPTH: 18.3 M  
CORED INTERVAL: 0-18.3 M LOG DEPTH: 17.7 M  
% CORE RECOVERY: 89% BIT SIZE: 5.5"  
PROBE: G-375-A DETECTOR: 1.5" X 0.5" NAI  
LOGGED BY: P. A. THAYER

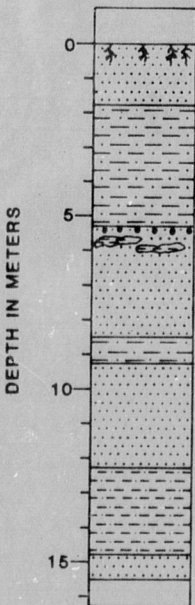




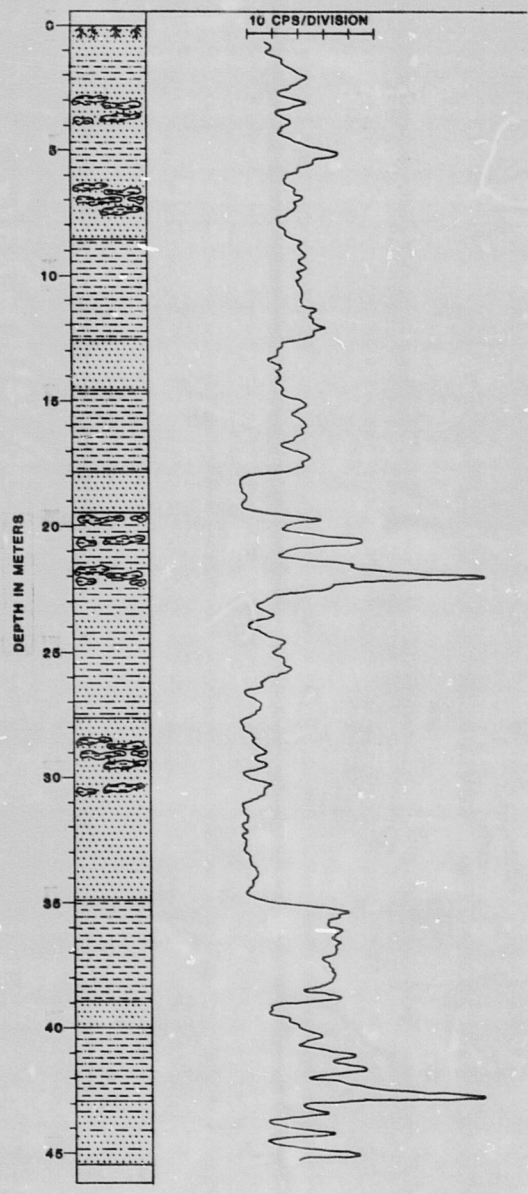
STATE: S. C. COUNTY: AIKEN  
HOLE: A-22 COLLAR ELEVATION: 115.8 M  
HOLE STARTED: 10/20/79 DRILLER: F. JONES  
HOLE COMPLETED: 10/20/79 DRILL DEPTH: 18.3 M  
CORED INTERVAL: 0.18.3 M LOG DEPTH: 16.7 M  
% CORE RECOVERY: 96% BIT SIZE: 5.5"  
PROBE: G-375-A DETECTOR: 1.5" X 0.5" NAI  
LOGGED BY: P. A. THAYER



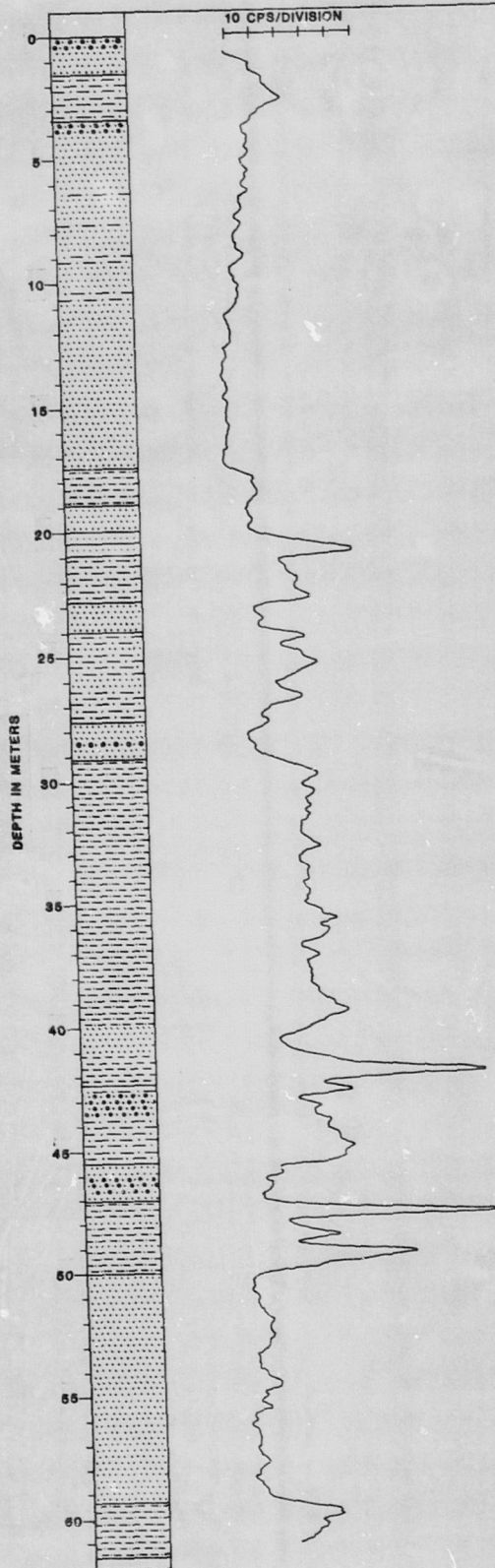
STATE: S. C. COUNTY: AIKEN  
HOLE: A-23 COLLAR ELEVATION: 113.7 M  
HOLE STARTED: 10/20/79 DRILLER: F. JONES  
HOLE COMPLETED: 10/20/79 DRILL DEPTH: 18.3 M  
CORED INTERVAL: 0-18.3 M LOG DEPTH: N. A.  
% CORE RECOVERY: 96% BIT SIZE: 5.5"  
LOGGED BY: P. A. THAYER



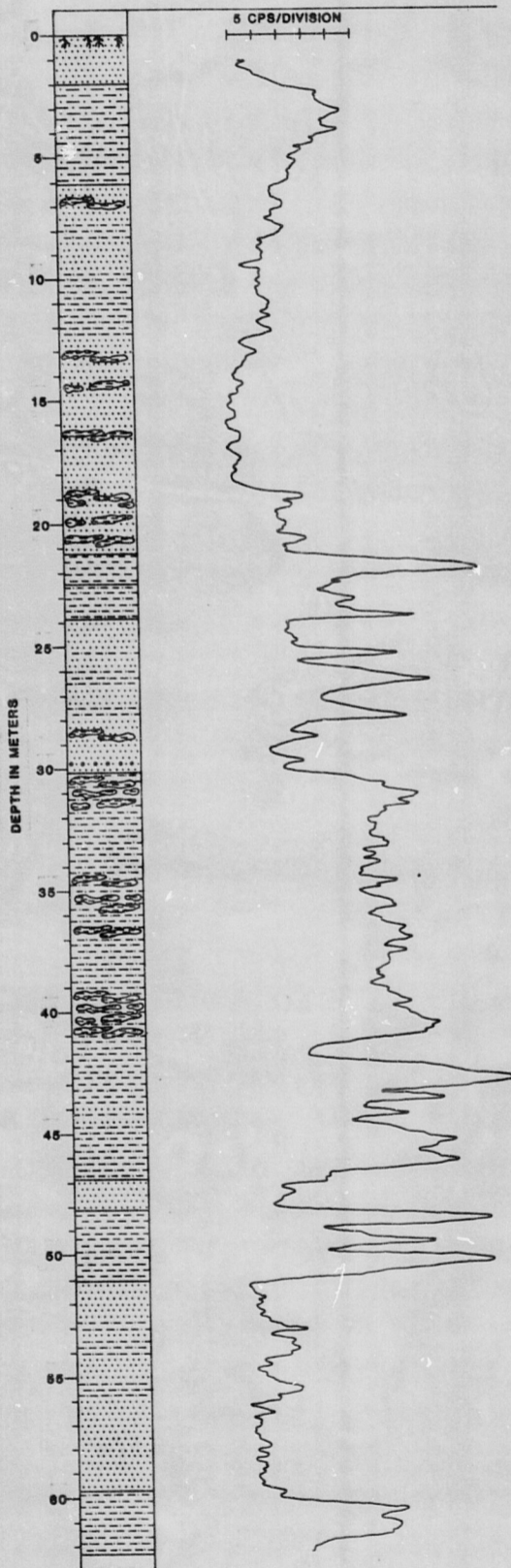
STATE: S. C. COUNTY: AIKEN  
HOLE: A-1 COLLAR ELEVATION: 146.6 M  
HOLE STARTED: 9/12/79 DRILLER: F. JONES  
HOLE COMPLETED: 9/15/79 DRILL DEPTH: 46.0 M  
CORED INTERVAL: 0-46.0 M LOG DEPTH: 45.2 M  
% CORE RECOVERY: 84% BIT SIZE: 8.5"  
PROBE: G-375-A DETECTOR: 1.5" X 0.5" NAI  
LOGGED BY: P. A. THAYER



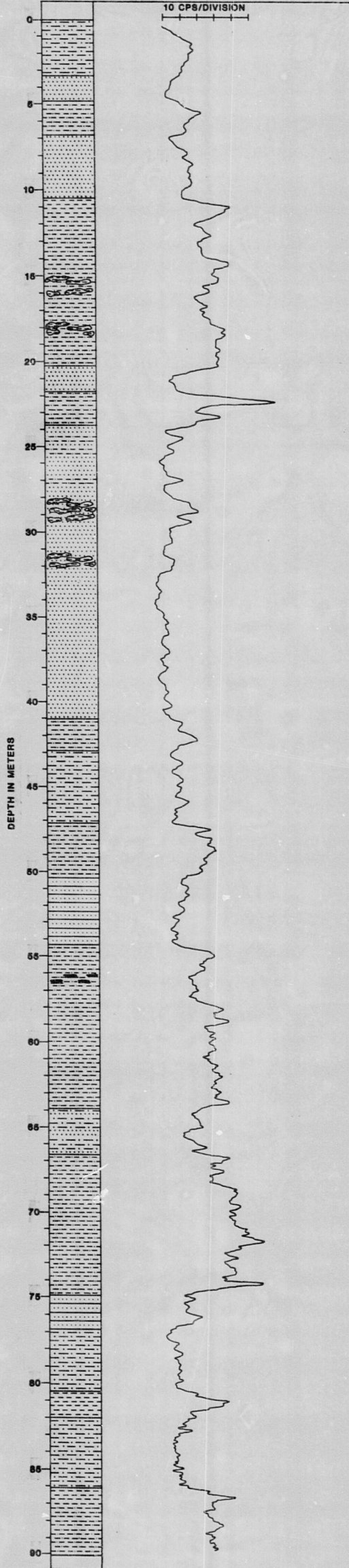
STATE: S. C. COUNTY: AIKEN  
HOLE: A-2 COLLAR ELEVATION: 163.9 M  
HOLE STARTED: 9/16/79 DRILLER: F. JONES  
HOLE COMPLETED: 9/16/79 DRILL DEPTH: 63.1 M  
CORED INTERVAL: 0-63.1 M LOG DEPTH: 61.1 M  
% CORE RECOVERY: 81% BIT SIZE: 6.5"  
PROBE: G-375-A DETECTOR: 1.5" X 0.5" NAI  
LOGGED BY: P. A. THAYER



STATE: S. C. COUNTY: AIKEN  
HOLE: A-2 COLLAR ELEVATION: 131.0 M  
HOLE STARTED: 9/18/79 DRILLER: F. JONES  
HOLE COMPLETED: 9/20/79 DRILL DEPTH: 64.3 M  
CORED INTERVAL: 0-64.3 M LOG DEPTH: 62.2 M  
% CORE RECOVERY: 80% BIT SIZE: 6.5"  
PROBE: G-375-A DETECTOR: 1.5" X 0.5" MAI  
LOGGED BY: P. A. THAYER

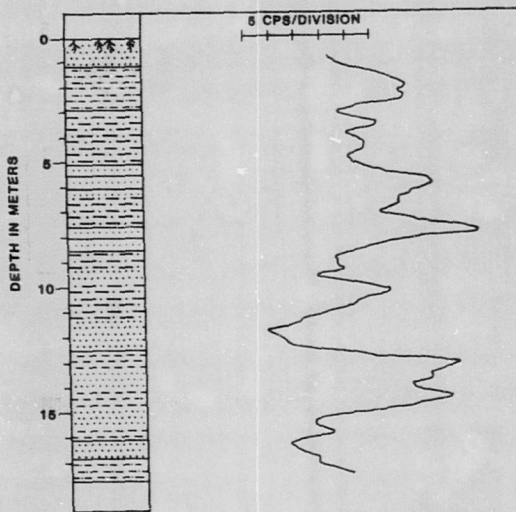


STATE: S. C. COUNTY: AIKEN  
HOLE: A-4 COLLAR ELEVATION: 136.3 M  
HOLE STARTED: 9/20/79 DRILLER: F. JONES  
HOLE COMPLETED: 9/26/79 DRILL DEPTH: 91.4 M  
CORED INTERVAL: 0-91.4 M LOG DEPTH: 89.0 M  
% CORE RECOVERY: 83% BIT SIZE: 6.5"  
PROBE: G-375-A DETECTOR: 1.5" X 0.5" NAI  
LOGGED BY: P. A. THAYER



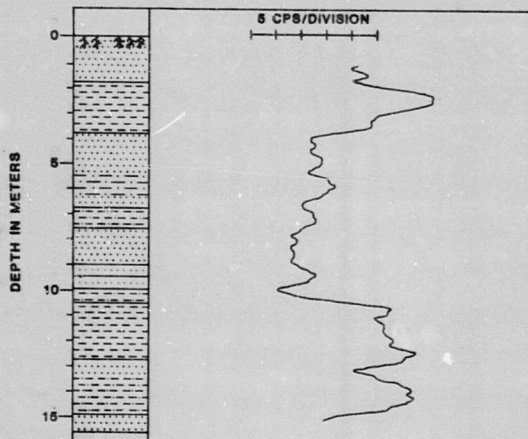
Aiken Co. #5

STATE: S. C. COUNTY: AIKEN  
HOLE: A-5 COLLAR ELEVATION: 117.4 M  
HOLE STARTED: 9/10/79 DRILLER: F. JONES  
HOLE COMPLETED: 9/10/79 DRILL DEPTH: 17.1 M  
CORED INTERVAL: 0-17.1 M LOG DEPTH: 17.7 M  
% CORE RECOVERY: 92% BIT SIZE: 8.5"  
PROBE: G-375-A DETECTOR: 1.5" X 0.5" NAI  
LOGGED BY: P. A. THAYER



Aiken Co. #6

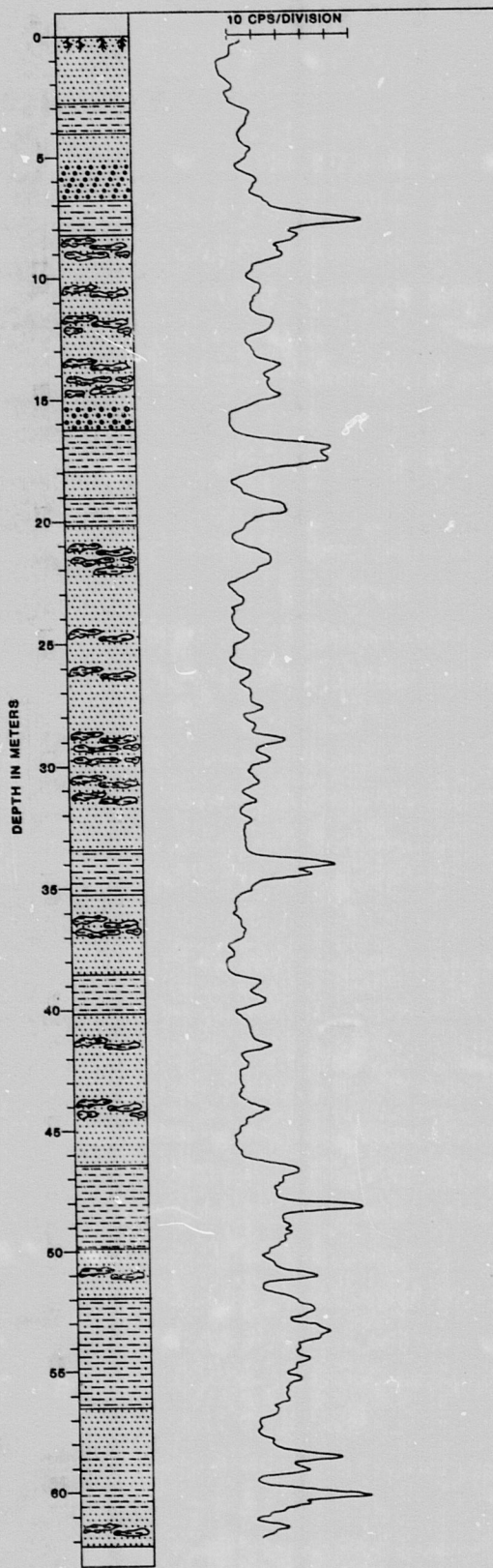
STATE: S. C. COUNTY: AIKEN  
HOLE: A-6 COLLAR ELEVATION: 123.1 M  
HOLE STARTED: 9/10/79 DRILLER: F. JONES  
HOLE COMPLETED: 9/10/79 DRILL DEPTH: 15.4 M  
CORED INTERVAL: 0-15.4 M LOG DEPTH: 15.1 M  
% CORE RECOVERY: 91% BIT SIZE: 5.5"  
PROBE: G-576-A DETECTOR: 1.5" X 0.5" NAI  
LOGGED BY: P. A. THAYER



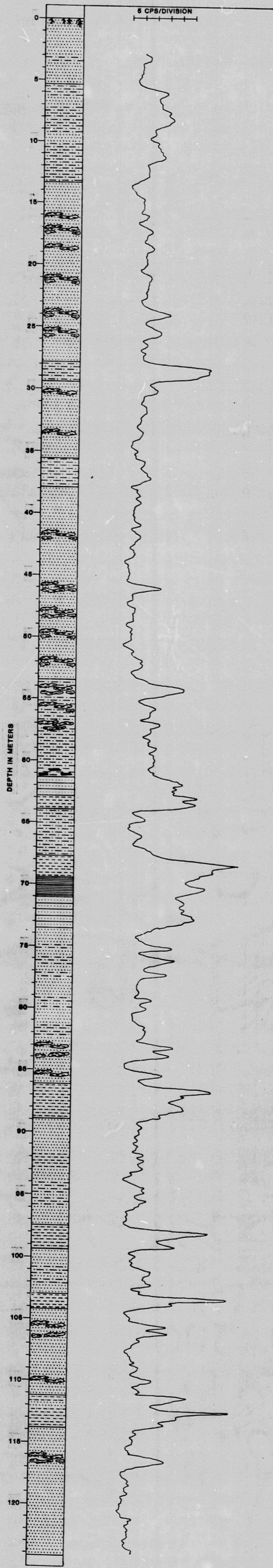


Aiken Co #7

STATE: S. C. COUNTY: AIKEN  
HOLE: A-7 COLLAR ELEVATION: 126.2 M  
HOLE STARTED: 10/1/79 DRILLER: F. JONES  
HOLE COMPLETED: 10/2/79 DRILL DEPTH: 56.1 M  
CORED INTERVAL: 0-56.1 M LOG DEPTH: 61.0 M  
% CORE RECOVERY: 77% BIT SIZE: 5.5"  
PROBE: G-375-A DETECTOR: 1.5" X 0.5" NAI  
LOGGED BY: P. A. THAYER



STATE: S. C. COUNTY: AIKEN  
HOLE: A-8 COLLAR ELEVATION: 108.9 M  
HOLE STARTED: 10/3/79 DRILLER: F. JONES  
HOLE COMPLETED: 10/10/79 DRILL DEPTH: 123.0 M  
CORED INTERVAL: 0-123.0 M LOG DEPTH: 124.1 M  
% CORE RECOVERY: 59% BIT SIZE: 5.5"  
PROBE: G-375-A DETECTOR: 1.5" X 0.5" NA!  
LOGGED BY: P. A. THAYER



STATE: S. C. COUNTY: AIKEN  
HOLE: A-9 COLLAR ELEVATION: 157.8 M  
HOLE STARTED: 10/11/79 DRILLER: F. JONES  
HOLE COMPLETED: 10/15/79 DRILL DEPTH: 84.7 M  
CORED INTERVAL: 0-84.7 M LOG DEPTH: 83.9 M  
% CORE RECOVERY: 74% BIT SIZE: 5.5"  
PROBE: G-375-A DETECTOR: 1.5" X 0.6" NAI  
LOGGED BY: P. A. THAYER

