

Sheet No. 78  $\frac{G}{NE \& SE}$

ASSAM & BENGAL

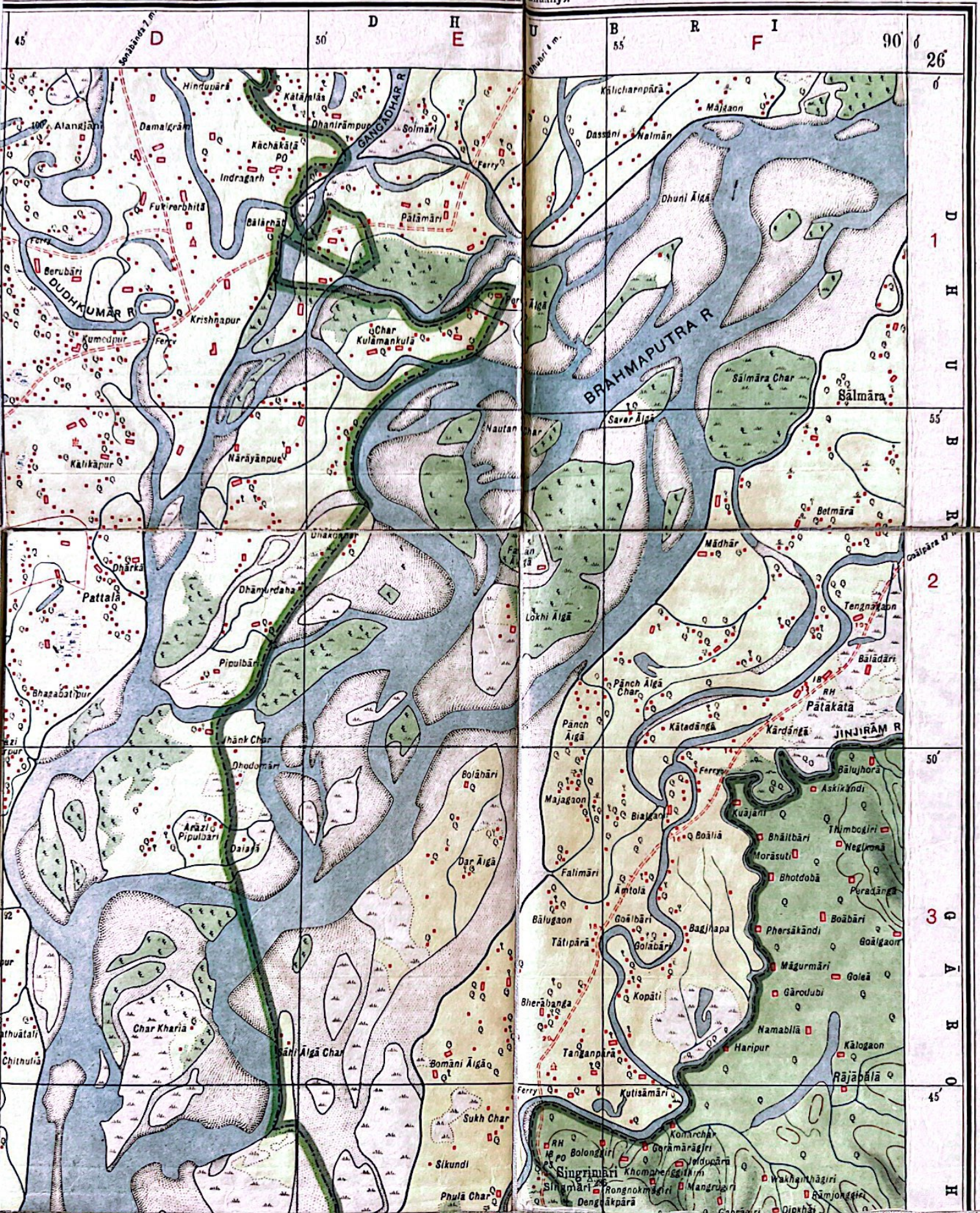
Scale 1" = 2 miles.

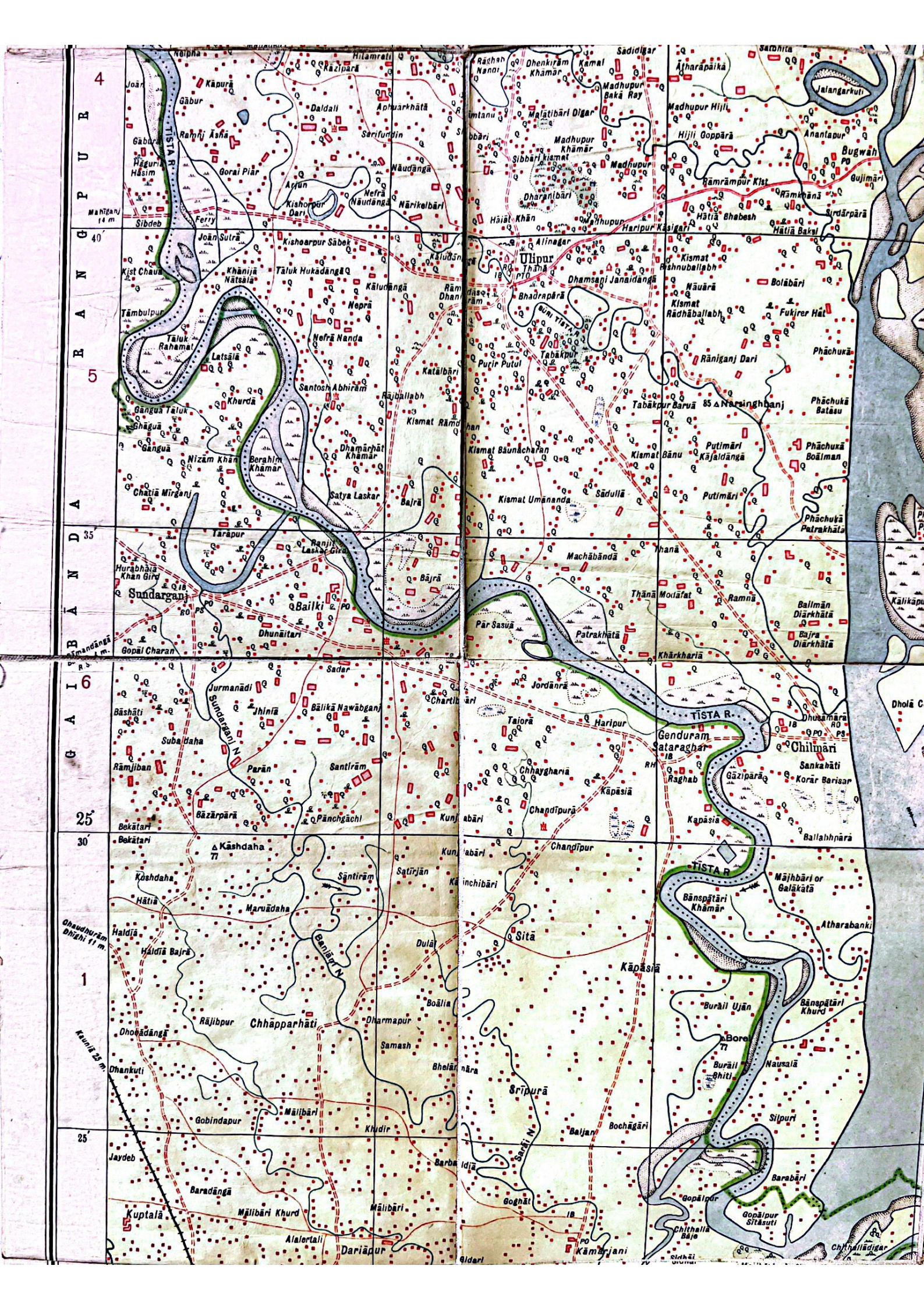
GARO HILLS AND  
GOALPĀRA DISTRICTS.  
COOCH BEHĀR STATE  
& RANGPUR DISTRICT.

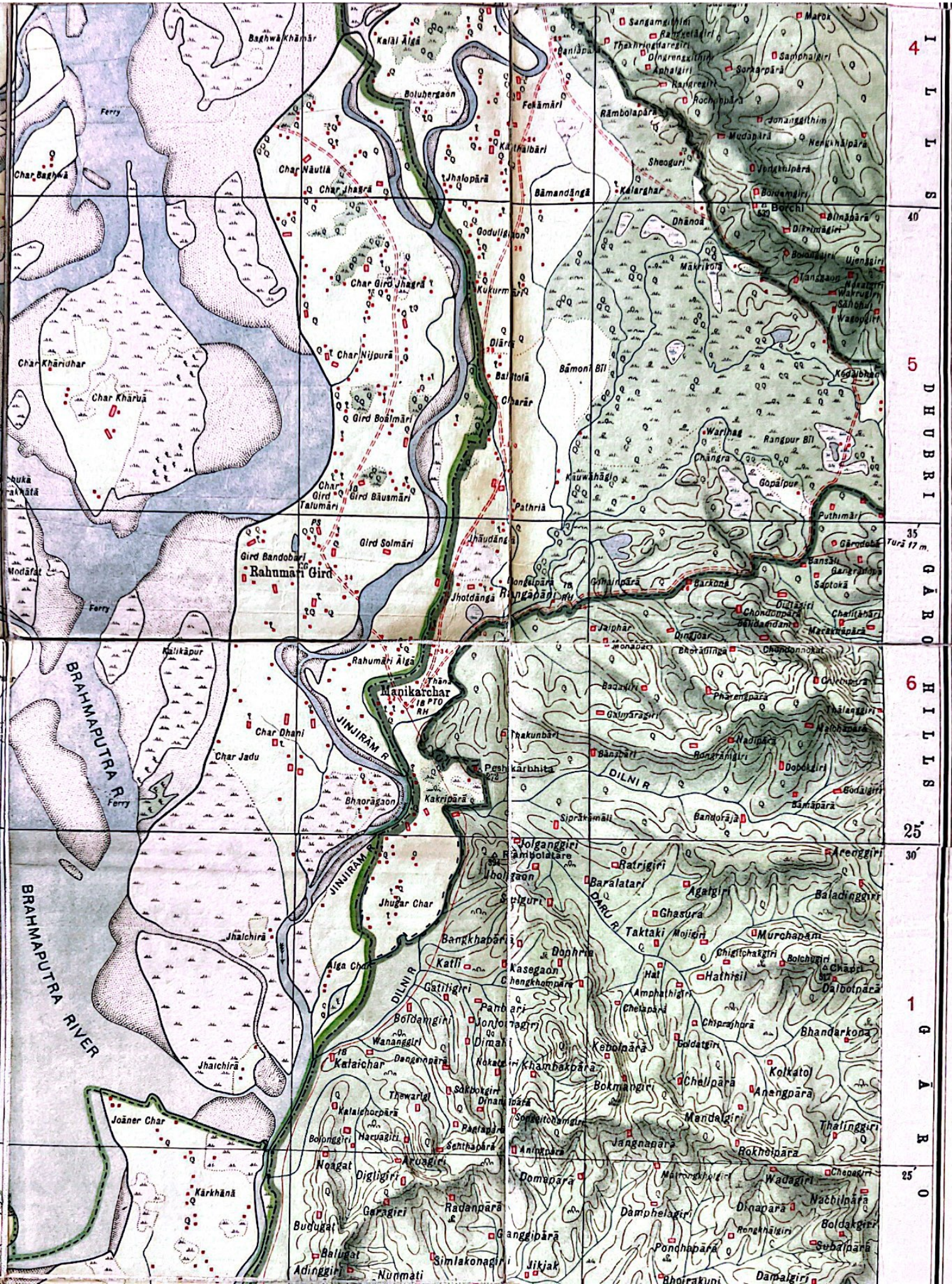
Compiled from various sources.  
(See footnote).

ASSAM &



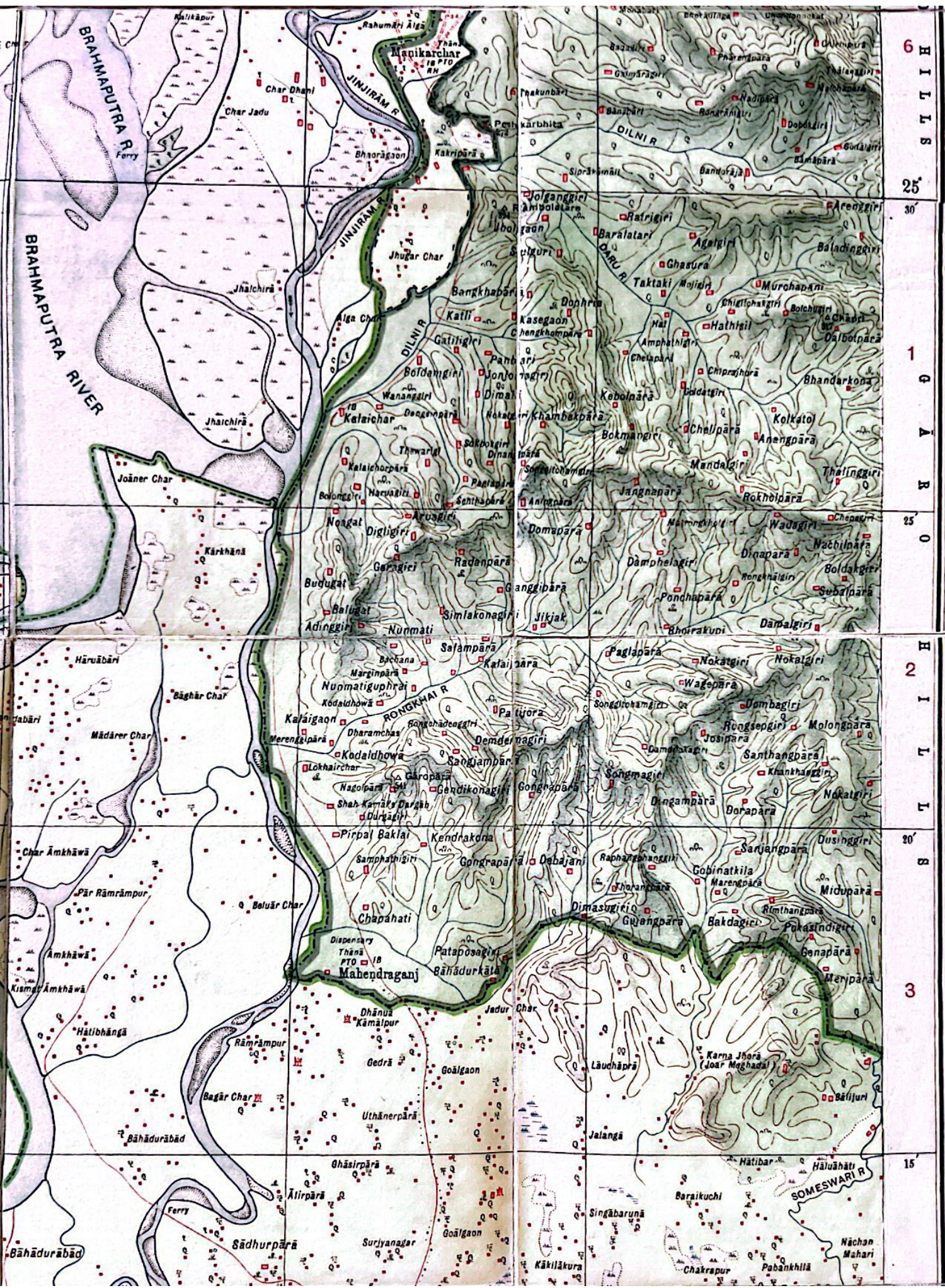




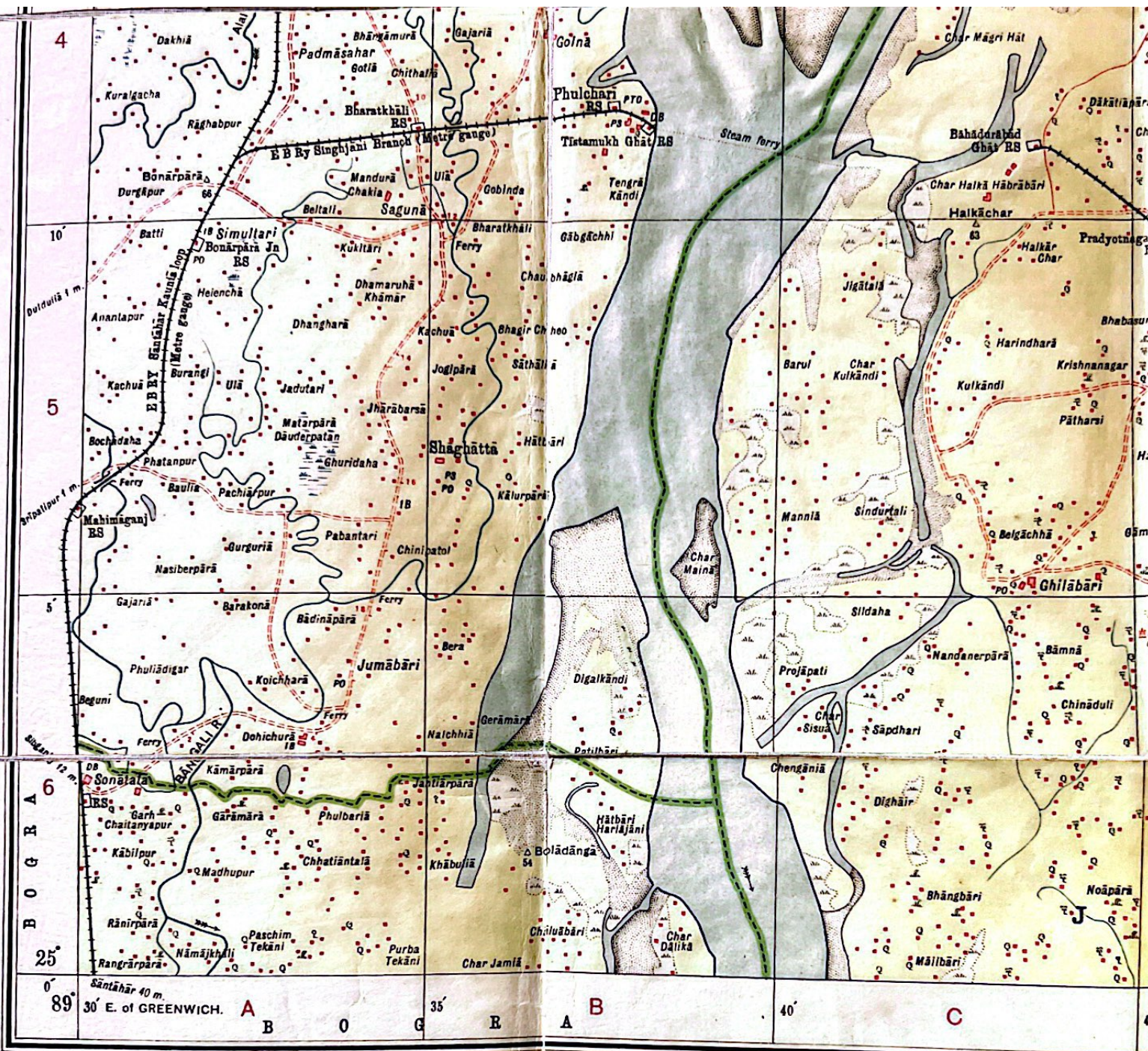


I  
L  
L  
S  
40  
5  
D  
H  
U  
B  
R  
I  
35  
G  
A  
R  
O  
H  
I  
L  
L  
S  
25°  
30'  
1  
G  
A  
R  
O  
25°  
0





6  
H  
I  
L  
S  
  
25  
30  
  
1  
G  
A  
R  
  
25  
0  
  
H  
I  
L  
L  
  
20  
S  
  
3  
  
15



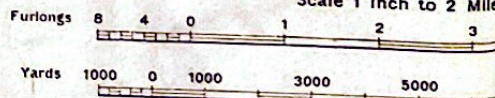
Res. No. 1006 D 25 (I.S.M. S.) 500.

Railway - Broad Gauge: Double with Mile-stone. Single	
Other Gauges: Double. Single	
Mineral Line and Tramway. Telegraph Line	
Road: -Metalled, with Mile-stone. Unmetalled	
Cart-track. Camel-track	
Mule-path, with Pass symbol. Foot path	
Spring. Mine. Well: -Lined or in rock. Unlined	
Fort. Watch-tower. Camping Ground. Deserted Village	
Church. Temple. Mosque. Pagoda. Pongyi Kyaung. Graves	
Post & Telegraph Offices. P.O. & T.O. combined. Police Stn.	

Index to Sheets.

78 Q N.W.	78 G N.E.	78 I N.W.
78 G S.W.	78 G S.E.	78 I S.W.
78 H N.W.	78 H N.E.	78 L N.W.

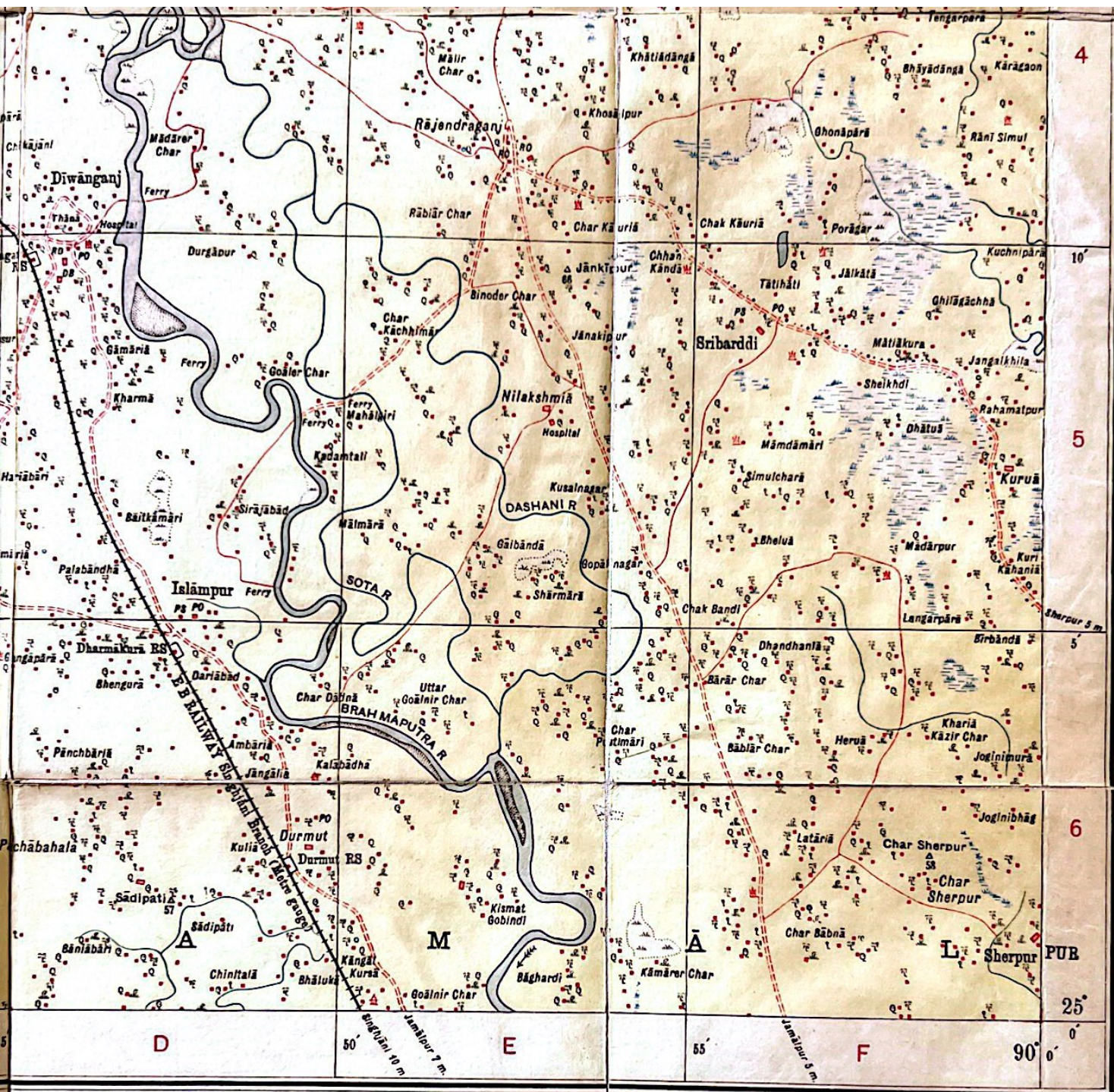
Published under the direction of Colonel C. P. Gunter, 1926



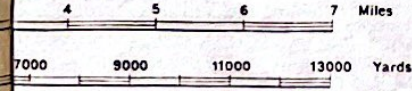
Large wooded areas are coloured green.  
All rivers, streams, lakes, etc., are coloured blue,  
but this is no indication that they are all perennial.

This sheet has been compiled from 4-Inch thānā maps of the  
Records Department, old one-inch sheet No. 343 and pre-  
published in 1915, 1921 and 1926 respectively, and half inch  
the villages and roads brought upto date in 1926 by the Depu-  
Hill features are shown by form lines.  
R O denotes Registration Office.



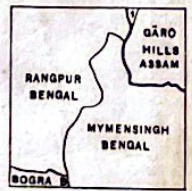


C.B.E. R.E. Officiating Surveyor General of India,  
 Scale: 1:126,720.



Large cultivated areas are coloured yellow.  
 The exterior boundaries of areas of State  
 Reserved or Protected Forests are shown by green  
 ribands.

Administrative Index.



GOALPĀRA, ASSAM.

HELIOZINGRAPHED AT THE SURVEY OF INDIA OFFICES, CALCUTTA.

Boundary:-- International.	Ditto, undemarcated	— — — — —
Province or State.	Ditto, undemarcated	— — — — —
District.	Sub-Division (Tahsil, etc.)	— — — — —
State, Reserved or Protected Forest (SF, RF or PF)		— — — — —
Boundary pillar:-- Surveyed.	Unsurveyed	■ ○
Heights in feet above mean sea level:--		
Trigonometrical Survey Bench-mark.	Canal Bench-mark	BM 417 417
Trigonometrical Station.	Intersected Point	△ Khan 417 417
Approximate Height		417
Cult House.	Dāk & Inspection Bungalows	CH DS
Rest House		RB RH

Copies of this map can be obtained from the Map Record & Issue  
 Office, 13 Wood Street, Calcutta. Price Three Rupees, if printed  
 on linen-backed paper Three Rupees Twelve Annas

Revised price Rs. 2.

Seasons 1908-09, 1912-13, executed by the Land  
 Preliminary edition sheet Nos. 78 G/12 and 78 G/16  
 Gáo Hills District map of seasons 1872-74, with  
 Commissioner, Gáo Hills District.