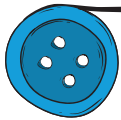
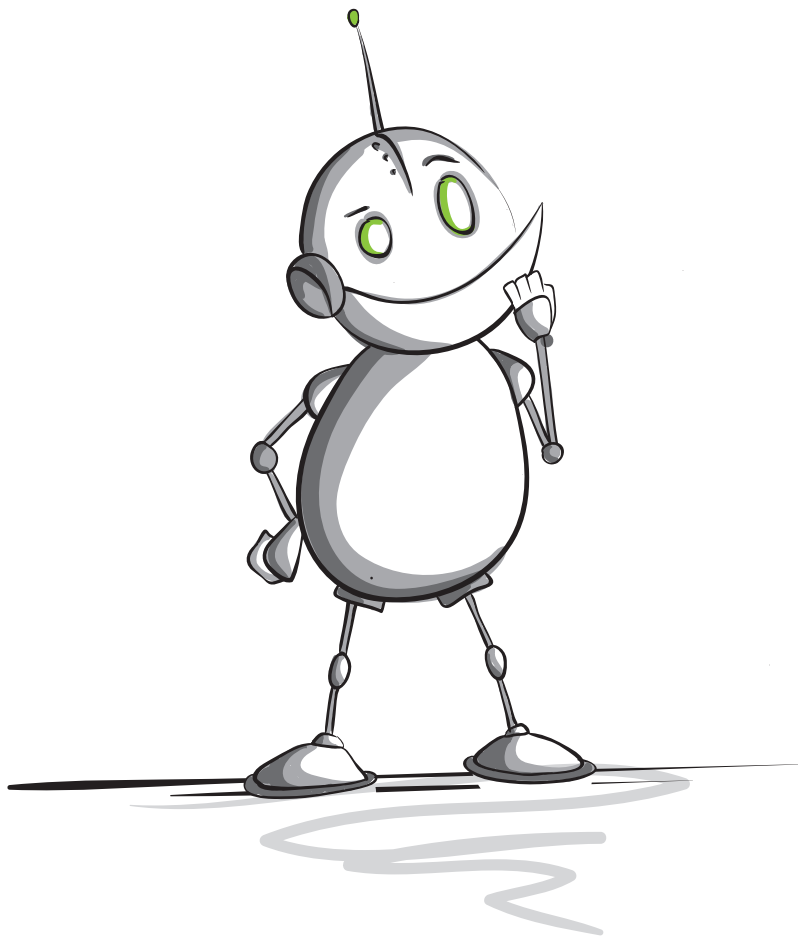
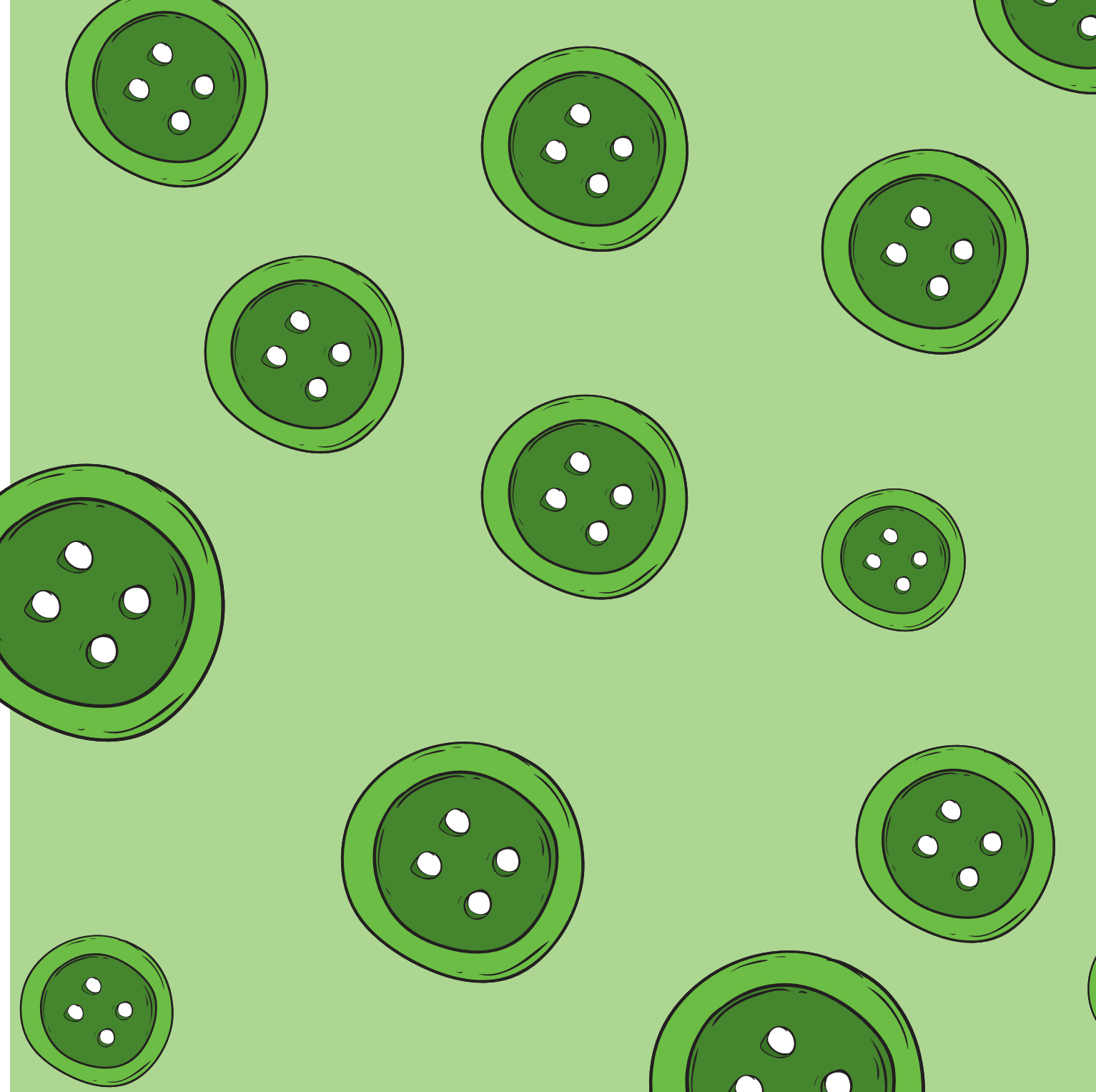


# Whose button is this?

This book belongs to









*Whose button is this?*

Illustrated by James Woolley

Written by Paul Kennedy

Designed by Louise Gale

with the help of the Book Dash participants at Cape Town on  
28th June 2014.

ISBN: 978-0-9922357-7-2

This work is licensed under a Creative Commons Attribution 4.0 Licence (<http://creativecommons.org/licenses/by/4.0/>). You are free to share (copy and redistribute the material in any medium or format) and adapt (remix, transform, and build upon the material) this work for any purpose, even commercially. The licensor cannot revoke these freedoms as long as you follow the following license terms:

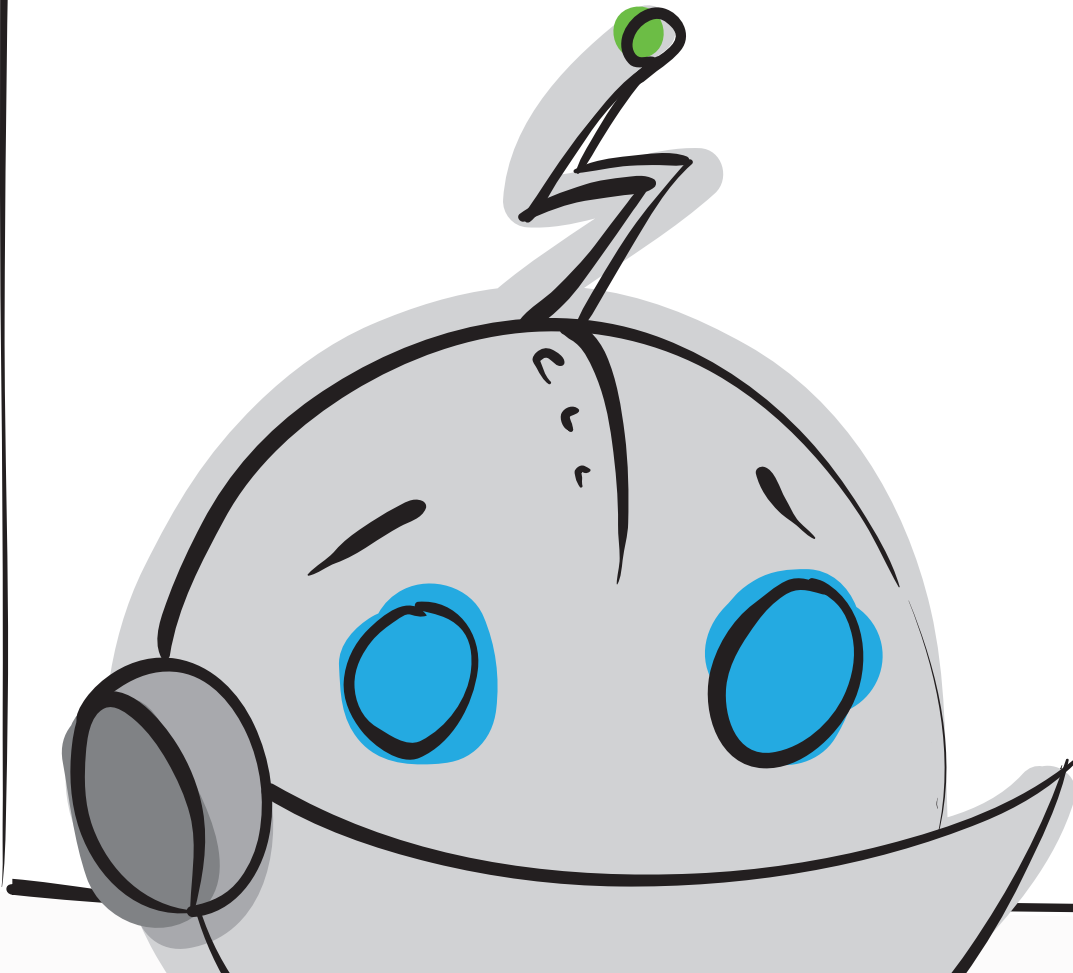
**Attribution:** You must give appropriate credit, provide a link to the license, and indicate if changes were made. You may do so in any reasonable manner, but not in any way that suggests the licensor endorses you or your use.

**No additional restrictions:** You may not apply legal terms or technological measures that legally restrict others from doing anything the license permits.

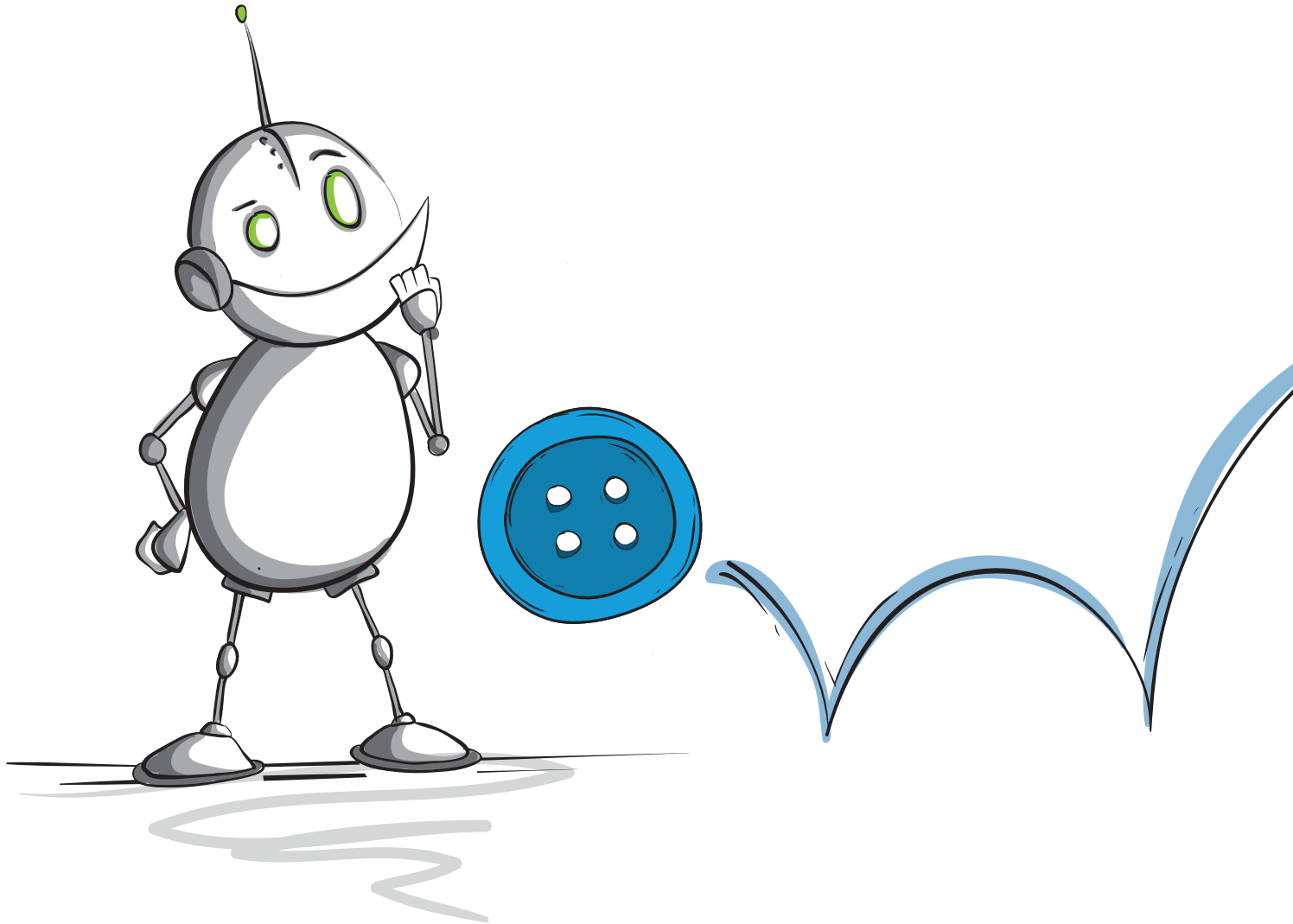
**Notices:** You do not have to comply with the license for elements of the material in the public domain or where your use is permitted by an applicable exception or limitation.

No warranties are given. The license may not give you all of the permissions necessary for your intended use. For example, other rights such as publicity, privacy, or moral rights may limit how you use the material.

Whose button  
is this?



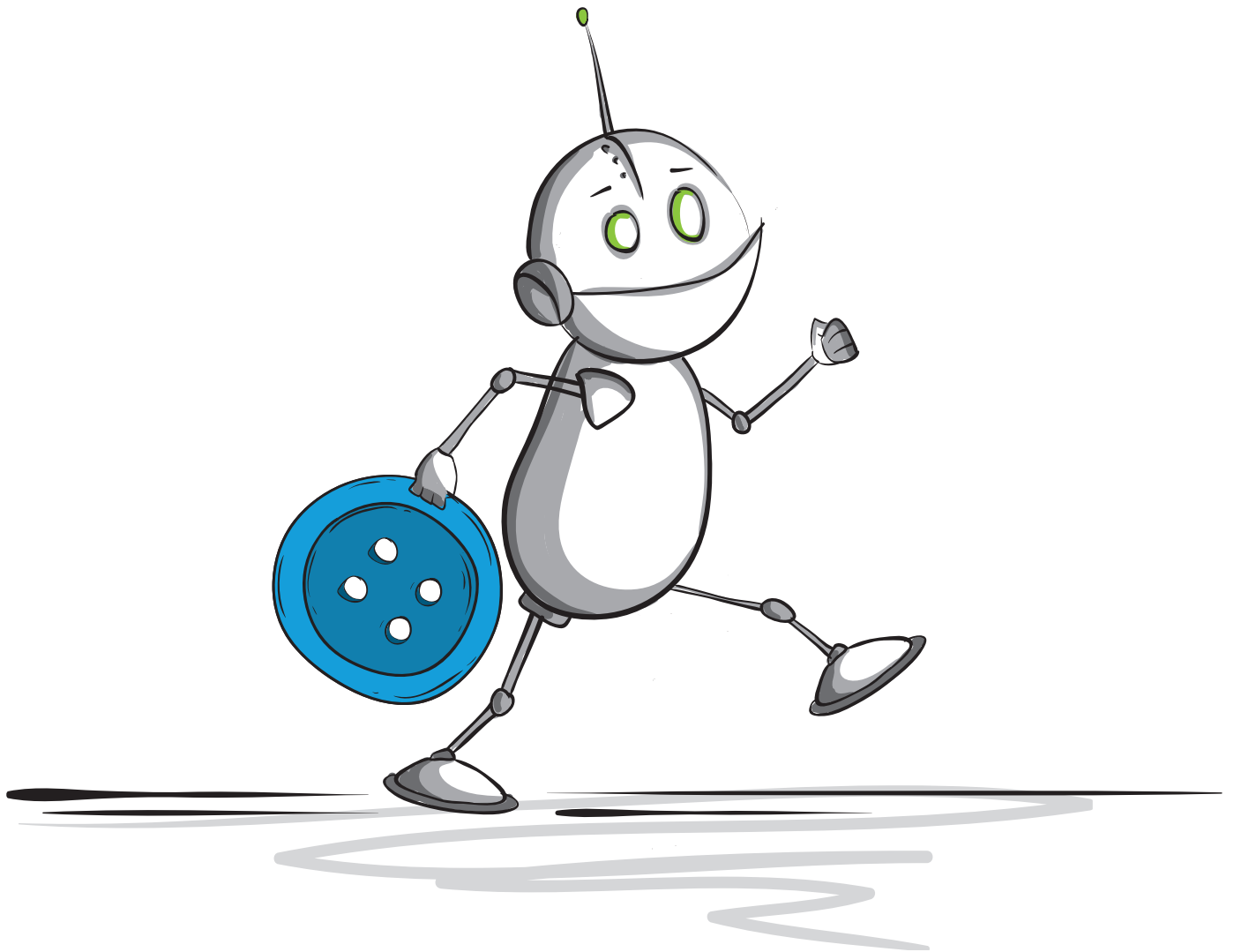
**Tinny Tim**  
was sitting on the  
road when a button  
bounced his way.



**“I wonder where this  
comes from,” he said.**

**He wanted to  
find out.**





It was busy on the  
side of the road.

“Woah!”

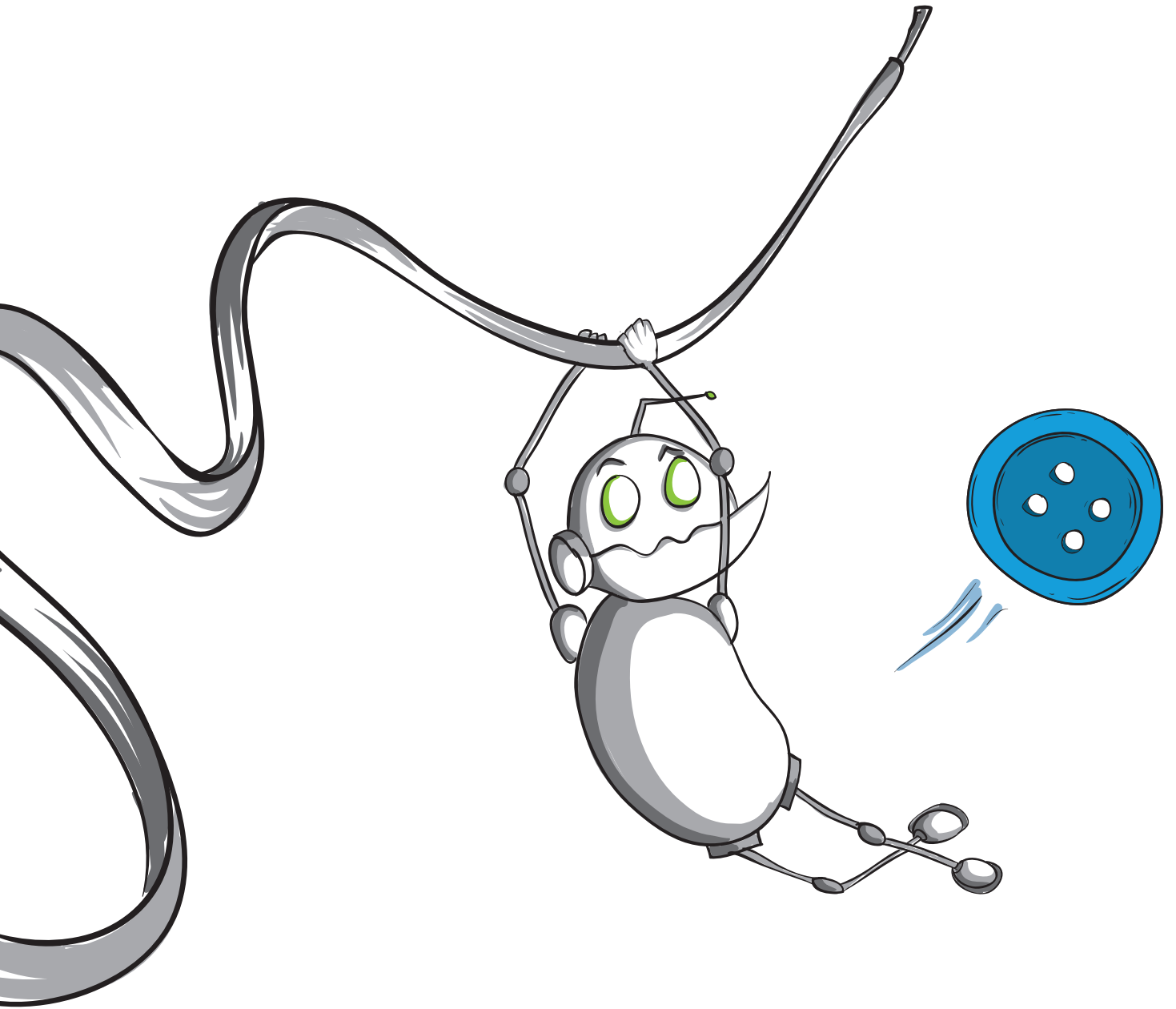
He nearly got  
squashed.



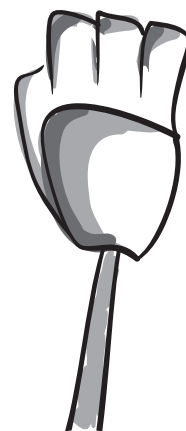


He made a lucky  
escape.

“It’s scary out here,”  
he said.



“Hey there, is this  
yours?”



The green man said  
nothing. He just  
turned red.

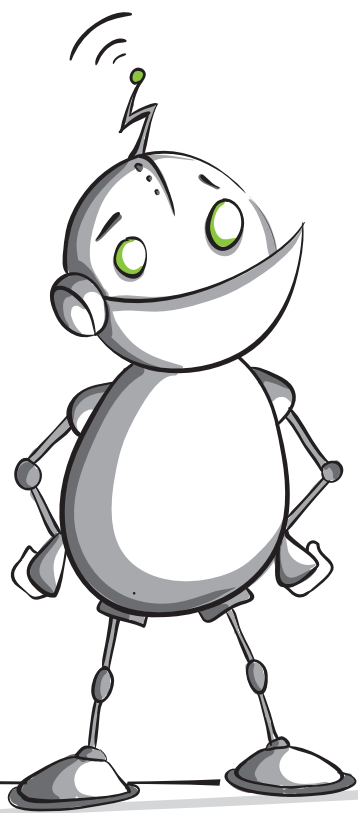
“What a rude person.”





Tinny Tim carried on  
looking.

“Whose button  
is this?”

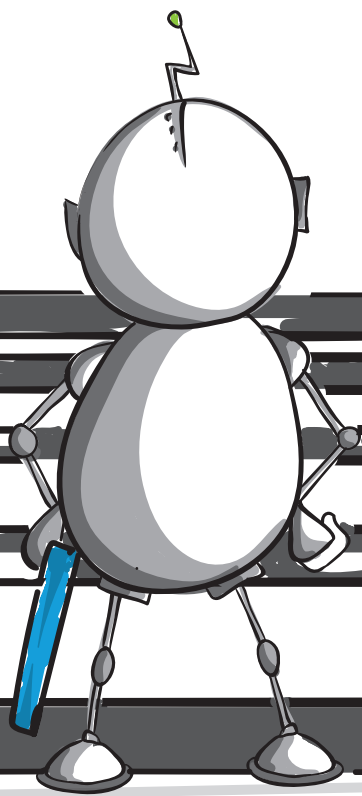


**“Woah..!**

**...at least he’s  
friendly.”**



**“I’ve got to get to the other side. I’m sure that’s where this comes from.”**

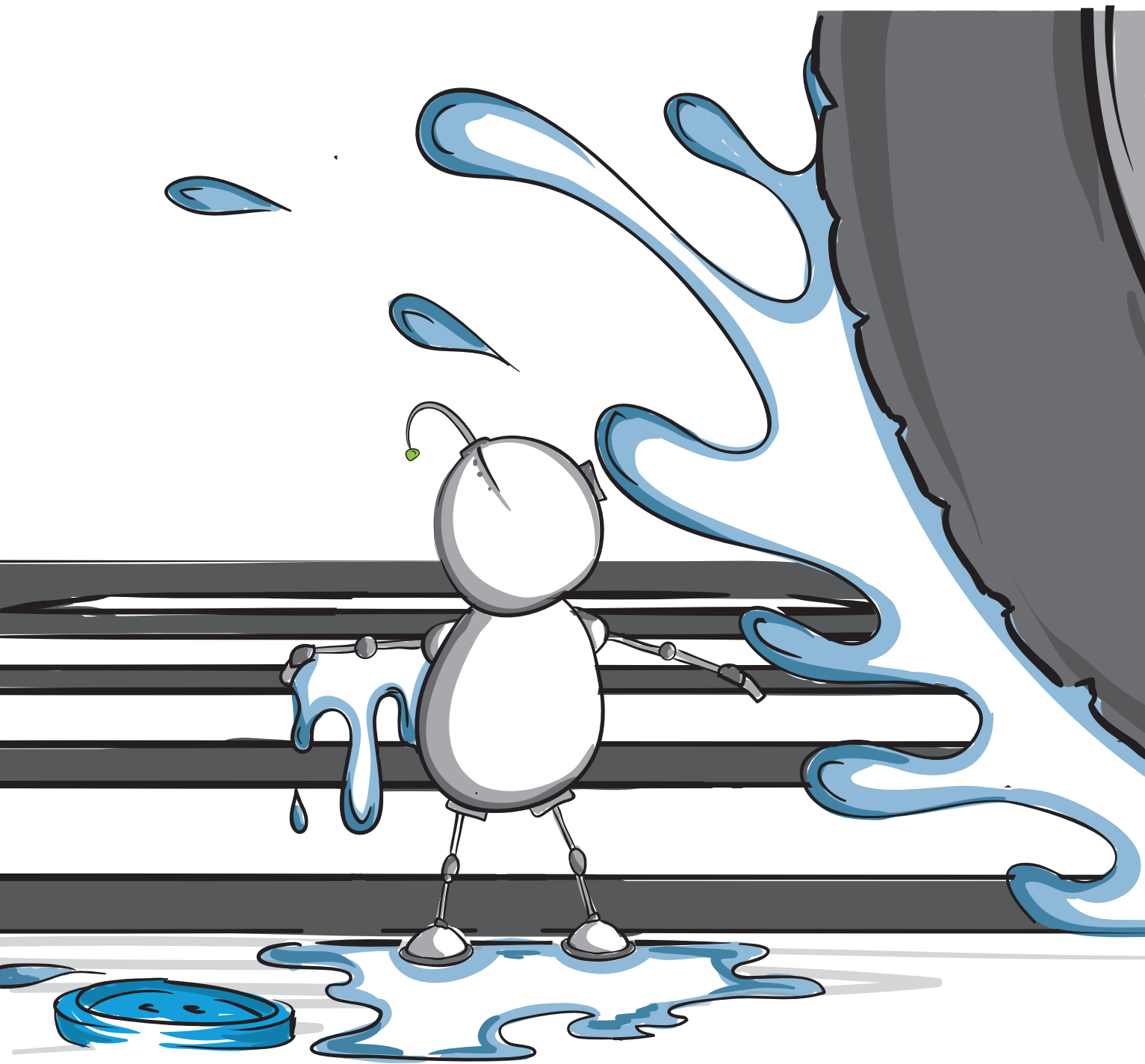


**SPLASH!**

**“That was close.”**

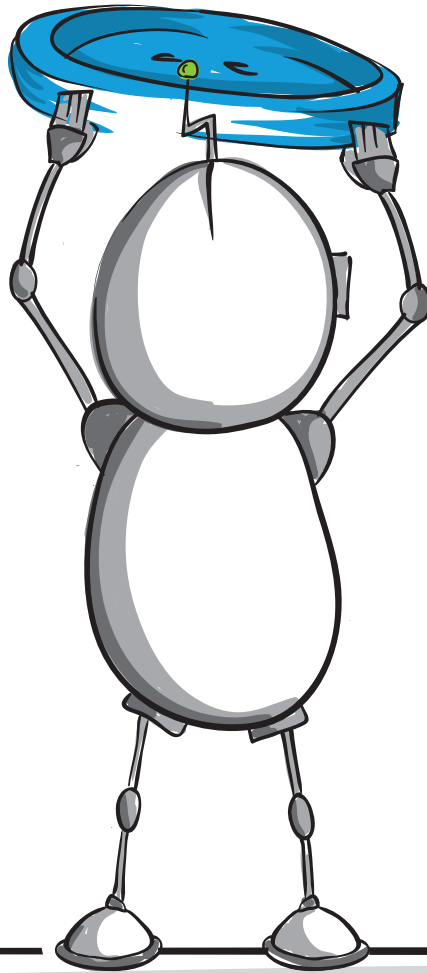
**He waited for the  
cars to pass before he  
carried on.**





Maybe this was who  
he was looking for.

“Hello, who are you?”



“I’m Ruby Rags.”

“I think this is yours,”  
he said.



**“Thank you, little  
robot. Can we be  
friends?”**

