



DEPARTMENT OF THE AIR FORCE
WASHINGTON, DC

OFFICE OF THE GENERAL COUNSEL

MEMORANDUM FOR SAF/IEB

FEB 11 2005

FROM: SAF/GCN
1740 Air Force Pentagon, 4C921
Washington, DC 20330-1740

SUBJECT: Legal Sufficiency of BRAC Candidate Recommendation, USAF 0040

The attached BRAC Candidate Recommendation was reviewed by the undersigned legal counsel and is legally sufficient for purposes of submission by the Air Force to the Infrastructure Steering Group.

A handwritten signature in black ink, appearing to read "M. Pankove".

MARTIN PANKOVE
Special Counsel (BRAC)
(Environment and Installations)

DEPARTMENT OF THE AIR FORCE

WASHINGTON, DC 20330-1000



OFFICE OF THE ASSISTANT SECRETARY

FEB 11 2005

MEMORANDUM FOR CHAIRMAN, INFRASTRUCTURE STEERING GROUP (ISG)

SUBJECT: Submission of Air Force BRAC 2005 Candidate Recommendations

1. Reference memorandum, Chairman ISG, 2 Dec 04, subject: Submittal of BRAC 2005 Candidate Recommendations.

2. The following Air Force BRAC 2005 Candidate Recommendations are attached:

USAF 0040, Close Hulman Regional APT AGS IN

3. Please direct any questions pertaining to the Air Force Candidate Recommendations to Col Chris Kapellas, DSN 222-9510.

Handwritten signature of Gerald F. Pease, Jr.

GERALD F. PEASE, JR.
Deputy Assistant Secretary
(Basing & Infrastructure Analysis)

Handwritten signature of Gary W. Heckman.

GARY W. HECKMAN
Major General, USAF
Assistant DCS, Plans and Programs (BRAC)

Attachments:
As Stated



Candidate #USAF-0040 / S139

Close Hulman Reg APT AGS, Terre Haute IN

Candidate Recommendation: Close Hulman Regional Airport AGS. The 181st Fighter Wing (ANG) will inactivate. The wing’s F-16 Block 30 aircraft will be distributed to the 122d Fighter Wing (ANG), Fort Wayne IAP AGS, Indiana (9 PAA) and retire (6 PAA). The wing's ECS elements will remain as an enclave.

<p style="text-align: center;"><u>Justification</u></p> <ul style="list-style-type: none"> ■ Enables Future Total Force transformation ■ Increases efficiency of operations ■ Consolidates aircraft fleet by MDS and block 	<p style="text-align: center;"><u>Military Value</u></p> <ul style="list-style-type: none"> ■ Distributes F-16s to higher mil value bases ■ Fort Wayne is an Air Sovereignty base ■ Frees resources for investment in Future Total Force
<p style="text-align: center;"><u>Payback</u></p> <ul style="list-style-type: none"> ■ One Time Cost: \$6M ■ Net Implementation Savings: \$0.2M ■ Annual Recurring savings: \$1M ■ Payback period: 5 yrs / 2012 ■ NPV Savings: \$10M 	<p style="text-align: center;"><u>Impacts</u></p> <ul style="list-style-type: none"> ■ Criterion 6: Total Job Change: -170 (direct: -104, indirect: -66) ROI: 0.19% ■ Criterion 7: A review of community attributes indicates no issues regarding the ability of the infrastructure of the communities to support missions, forces and personnel ■ Criterion 8: No natural infrastructure issues affecting candidate recommendation

- ✓ Strategy
- ✓ Capacity Analysis / Data Verification
- ✓ JCSG/MilDep Recommended
- ✓ Deconflicted w/JCSGs
- ✓ COBRA
- ✓ Military Value Analysis / Data Verification
- ✓ Criteria 6-8 Analysis
- ✓ Deconflicted w/MilDeps

Candidate Recommendation #USAF-0040

Candidate Recommendation: Close Hulman Regional Airport AGS. The 181st Fighter Wing (ANG) will inactivate. The wing's F-16 Block 30 aircraft will be distributed to the 122d Fighter Wing (ANG), Fort Wayne IAP AGS, Indiana (9 PAA) and retire (6 PAA). The wing's Expeditionary Combat Support (ECS) elements will remain as an enclave.

Justification: Enables Future Total Force transformation through force structure reduction. Increases efficiency of operations by consolidating the F-16, Block 30 fleet to an installation of higher military value for the emerging Air Sovereignty mission. Fort Wayne is an Air Sovereignty base.

Payback (Criterion 5): The total estimated one-time cost to the Department of Defense to implement this recommendation is \$6 million. The net of all costs and savings to the Department during the implementation period is a savings of \$2 million. Annual recurring savings to the Department after implementation are \$1 million, with a payback period expected in 5 years. The net present value of the cost and savings to the Department over 20 years is a savings of \$10 million.

Impacts:

Economic Impact on Communities (Criterion 6): Assuming no economic recovery, this recommendation could result in a maximum potential reduction of 170 jobs (104 direct jobs and 66 indirect jobs) over the 2006-2011 period in the Terre Haute economic area, which is 0.19 percent of economic area employment.

Impact on Community Infrastructure (Criterion 7): A review of community attributes indicates no issues regarding the ability of the infrastructure of the communities to support missions, forces and personnel.

Environmental Impact (Criterion 8): There are no natural infrastructure issues affecting this candidate recommendation.



Hulman, IN Overview

As of	30 Sep 2005	30 Sep 2011
Assigned Weapon System Type(s) (MDS)	F-16	F-16
Total PAA	15	15
# Flying Squadrons	1	1
Total Available Aircraft Parking spaces	24	24
Unused Aircraft Parking Spaces	9	9

Template used	F-16
Standard PAA per squadron	24



Hulman, IN

Estimated Capacity after 2011

Weapon System Type (MDS)	JSF
Maximum Capacity	24



Hulman, IN

Estimated Costs to Robust

Template used	F-16
Robust to Typical Squadron	
Precluding Factor	None
Major Construction	0.0
Minor Construction	0.0
Natural Infrastructure	0.0
Other Procurement	0.0
Planning & Design	<u>0.0</u>
Total Cost to Robust	0.0



Hulman, IN Natural Infrastructure

Natural Infrastructure	Exists (Y), Added (A), Precluding Factor (N)	Steps required to add capacity or reasons for precluding factor	Cost (\$M)
Capacity Requirements to Robust unit to “typical” squadron size:			
Air	Y		
AICUZ	Y		
Surface Land Access	Y		
Water Access	Y		
Water Discharge	Y		
Planning	N/A		
Total Natural Infrastructure Capacity Cost			0.0



Hulman, IN

Natural Infrastructure

Natural Infrastructure	Exists (Y), Added (A), Precluding Factor (N)	Steps required to add capacity or reasons for precluding factor	Cost (\$M)
Capacity Requirements to add one unit: 48 PAI			
Air	Y		
AICUZ	N		
Surface Land Access	Y		
Water Access	Y		
Water Discharge	Y		
Planning	N/A	Preparation of EIS required	
Total Natural Infrastructure Capacity Cost			
Capacity Requirements to add second unit:			
Air			
AICUZ			
Surface Land Access			
Water Access			
Water Discharge			
Planning			
Total Natural Infrastructure Capacity Cost			

Rank	Base	SOF	Current / Future Mission	Condition of Infrastructure	Contingency, Mobilization, Future Forces	Cost of Ops / Manpower
1	Pope AFB	78.7	81.48	82.42	49.11	86.08
2	Hurlburt Field	77.8	82.86	82.65	32.44	87.18
3	Eglin AFB	77	75.95	78.25	73.6	90.39
4	Seymour Johnson AFB	71.9	61.68	78.88	86.22	85.03
5	Langley AFB	69	65.24	71.66	73.5	77.2
6	Edwards AFB	62.4	53.64	68.48	82.79	40.87
7	Robins AFB	61.6	48.89	69.55	81	87.45
8	MacDill AFB	61	52.39	62.6	90.51	76.56
9	Holloman AFB	60.9	54.81	67.98	55.66	75.23
10	Tyndall AFB	60.9	55.11	65.35	61.07	90.98
11	Moody AFB	60.7	57.38	62.09	62.84	91.37
12	Shaw AFB	58.5	53.04	63.77	55.05	85.64
13	Charleston AFB	56.5	50.62	58.39	70.73	75.49
14	Jacksonville IAP AGS	55.7	57.16	58.77	30.26	77.87
15	Andrews AFB	55.2	51.37	63.1	43.68	41.74
16	Hill AFB	54.4	44.2	61.71	65.46	77.82
17	March ARB	54.4	47.94	66.93	34.41	45.41
18	Altus AFB	54.1	46.12	53.24	87.6	80.99
19	Nellis AFB	53.8	43.63	67.85	44.79	43.94
19	Little Rock AFB	53.8	45.76	59.92	56.89	88.12
21	Maxwell AFB	53.7	57.07	55.74	22.1	85.68
22	Eielson AFB	53.3	43.2	58.42	87.54	16.54
23	Dyess AFB	53.1	44.86	61.61	49.91	77.64
23	Luke AFB	53.1	45.94	64.67	34.45	68.92
25	Davis-Monthan AFB	52.5	42.17	65.19	41.96	71.89
26	Patrick AFB	51.9	51.19	50.92	55.28	66.83
27	Richmond IAP AGS	51.8	58.04	52.73	13.36	75.18
28	Elmendorf AFB	51.2	43.01	59.27	66.14	8.86
29	Whiteman AFB	50.9	36.68	57.41	83.69	74.42
30	Homestead ARS	50.7	42.01	59.76	52.49	53.65
31	Kirtland AFB	50.6	38.65	62.07	53.49	69.56
32	Dover AFB	50.6	48.58	59.61	18.95	64.93
33	McEntire AGS	50.6	52.17	51.67	29.8	85.19
34	Barksdale AFB	49.8	38.36	55.36	71.7	80.79
35	Mountain Home AFB	49.7	36.97	60.91	56.75	68.58
36	Savannah IAP AGS	49.5	57	46.26	19.99	84.65
37	Beale AFB	48.3	40.24	53.82	63.45	42.78
38	McChord AFB	47.8	39.58	60.37	31.06	57.08
39	Andersen AFB	47.1	40.89	53.02	63.18	0
40	Columbus AFB	46.5	40.99	50.48	42.92	94.97
41	McGuire AFB	46.2	37.55	50.4	71.21	37.26
42	Dannelly Field AGS	46	54.5	40.54	19.84	85.51
43	Fairchild AFB	45.8	29.63	53.46	81.59	73.99
44	Lackland AFB	45.8	37.88	47.55	66.73	78.33
45	Sheppard AFB	45.7	46.84	45.32	33.44	80.04
46	McConnell AFB	45.2	35.11	55.22	42	75.83
47	Minot AFB	45.1	31.63	51.43	73.91	73.42

Rank	Base	SOF	Current / Future Mission	Condition of Infrastructure	Contingency, Mobilization, Future Forces	Cost of Ops / Manpower
48	Indian Springs AFS	44.8	41.82	49.78	38.16	43.94
49	Peterson AFB	44.1	42.46	45.17	42.96	61.91
50	NAS New Orleans ARS	44	42.62	50.14	17.2	72.63
51	Hickam AFB	44	39.25	47.69	60.68	1.12
52	Ellsworth AFB	43.9	28.07	50.98	78.14	81.32
53	Grand Forks AFB	43.8	33.14	50.22	56.93	79.09
54	Vandenberg AFB	43.5	31.65	51.09	69.71	32.48
55	Keesler AFB	43.2	54.41	33.81	20.15	85.3
56	Tucson IAP AGS	42.8	42.23	46.22	23.72	72.7
57	Travis AFB	42.8	39.27	52.73	22.41	24.22
58	Tinker AFB	42.6	36.73	44.7	50.1	85.8
59	Birmingham IAP AGS	42.5	40.6	42.04	43.75	77.96
60	Fort Smith Regional APT AGS	42.1	50.04	34.53	25.5	88.84
61	Randolph AFB	42.1	35.99	42.26	60.08	78.51
62	Selfridge ANGB	42.1	44.13	42.66	30.02	42.51
63	Key Field AGS	42	38.23	48.25	24.58	75.4
64	Atlantic City IAP AGS	41.9	45.33	39.42	37.04	41.33
65	Kulis AGS	41.9	46.09	46.72	11.26	8.01
66	Boise Air Terminal AGS	41.4	33.24	46.55	47.75	78.4
67	Ellington Field AGS	41.2	36.06	46.6	37.56	61.2
68	Westover ARB	41.1	36.4	45.41	42.91	49.23
69	Cannon AFB	41	32.28	52.41	25.93	73.61
70	Forbes Field AGS	41	35.73	43.31	46.14	77.32
71	Charlotte/Douglas IAP AGS	40.1	42.18	42.01	12.5	81.48
72	Salt Lake City IAP AGS	40	44.61	38.75	15.8	71.72
73	Scott AFB	40	37.7	45.08	25.62	53.95
74	Carswell ARS, NAS Fort Worth Joint Reserve	39.9	38.37	40.37	36.48	72.7
75	Laughlin AFB	39.7	34.52	37.72	60.65	84.09
76	Martin State APT AGS	39.5	48.22	34.28	15.68	58.71
77	Wright-Patterson AFB	39.4	31.22	43.91	49.96	74.09
78	Harrisburg IAP AGS	39.4	42.14	41.25	11.49	69.5
79	Grissom ARB	39.4	30.99	41.3	61.4	73.25
79	Stewart IAP AGS	39.4	34.65	45.61	44.12	3.65
81	Luis Munoz Marin IAP AGS	38.6	48.06	36.29	10.61	14.06
82	Phoenix Sky Harbor IAP AGS	38.5	42.77	39.2	8.94	68.42
83	Vance AFB	38.5	39.06	39.07	21.45	87.75
84	Fresno Air Terminal AGS	38.2	44.66	38.22	6.58	46.99
85	Rosecrans Memorial APT AGS	37.8	37.06	40.34	19.33	81.65
86	Tulsa IAP AGS	37.7	38.94	38.53	17.94	81.03
87	Willow Grove ARS, NAS Willow Grove Joint Reserve	37.7	38.79	42.45	12.57	39.74
88	Channel Islands AGS	37.7	36.93	45.12	13.93	23.21
89	Buckley AFB	37.5	33.35	42.04	33.9	53.78
90	Jackson IAP AGS	37.4	36.84	33.67	43.55	84.66
91	Pittsburgh IAP AGS	36.8	27.36	44.58	39.25	69.3
92	Portland IAP AGS	36.4	38.77	37.1	16.33	60.13
93	Will Rogers World APT AGS	36.3	36.45	37.16	20.02	84.8

Rank	Base	SOF	Current / Future Mission	Condition of Infrastructure	Contingency, Mobilization, Future Forces	Cost of Ops / Manpower
94	McGee Tyson APT AGS	35.9	34.3	37.71	23.46	86.02
95	Offutt AFB	35.9	34.02	36.98	30.34	73.2
96	Nashville IAP AGS	35.6	40.32	32.22	17.22	78.64
97	Barnes MPT AGS	35.5	36.18	38.57	16.67	47.17
98	Bradley IAP AGS	35.4	35.73	40.29	11.56	43.06
99	Reno-Tahoe IAP AGS	35.2	39.61	34.25	16.17	47.47
100	Moffett Federal Field AGS	35.1	38.39	38.31	11.51	15.79
101	Otis AGB	35	25.56	41.56	49.14	42.04
102	Dobbins ARB	34.8	32.25	41.46	10.98	67.58
103	Memphis IAP AGS	34.3	37.94	32.53	14.51	75.57
104	New Castle County Airport AGS	34.1	44.15	26.76	15.06	47.53
105	Burlington IAP AGS	34.1	36.45	33.5	19.87	57.07
106	Rickenbacker IAP AGS	34	30.11	40.88	14	71.11
107	Pease International Trade Port AGS	33.9	31.7	39.27	21.58	33.8
108	Ewvra Sheppard AGS	33.9	42.89	24.41	21.64	73.39
109	Niagara Falls IAP ARS	33.8	27.38	36.92	44.75	55.66
110	Klamath Falls IAP AGS	32.5	29.07	36.69	21.87	69.01
111	Minn/St Paul IAP ARS	32.5	24.26	38.72	40.36	47.69
112	Capital APT AGS	32.4	34.87	30.79	21.79	57.09
113	Louisville IAP AGS	32.3	35.26	31.22	11.79	78.1
114	Gen Mitchell IAP AGS	32.3	29.87	31.65	39.01	59.38
115	Lincoln MAP AGS	32.1	33.2	31.38	19.97	71.2
116	Bangor IAP AGS	31.8	27.59	35.03	29.45	63.61
117	Pittsburgh IAP ARS	31.4	27.36	37.86	13.26	69.59
118	Toledo Express APT AGS	31.2	30.2	31.23	24.93	72.76
119	Gen Mitchell IAP ARS	30.8	29.87	28.61	36.9	59.94
120	Joe Foss Field AGS	30.7	28.28	33.35	18.95	77.92
121	Greater Peoria Regional APT AGS	30.6	32.05	28.44	27.43	54.24
122	Fort Wayne IAP AGS	30.6	27.81	35.34	11.85	79.17
123	W. K. Kellogg APT AGS	30.5	23.82	38.21	21.44	62.57
124	Hancock Field AGS	30.5	30.89	26.66	35.76	66.32
125	Lambert - St. Louis IAP AGS	30.4	29.81	33.45	12.78	59.7
126	Dane County Regional - Truax Field AGS	30.4	31.18	31.67	13.32	61.55
127	Arnold AFS	30.2	31.71	18.48	57.08	89.61
128	Cheyenne APT AGS	29.5	35.71	22.58	19.94	68.7
129	Hulman Regional APT AGS	29.5	30.78	29.38	10.65	82.24
130	Des Moines IAP AGS	29.5	30.02	28.63	18.46	76.75
131	Sioux Gateway APT AGS	29	29.76	27.03	20.68	79.98
132	Quonset State APT AGS	28.8	31.44	29.4	11.36	40.59
133	F. S. Gabreski APT AGS	27.9	32.55	26.75	11.16	29.52
134	Hanscom AFB	27.9	32.76	26.86	10.54	25.42
135	Hector IAP AGS	27.7	31.75	21.98	21.85	72.6
135	Schenectady County APT AGS	27.7	36.27	19.77	13.57	60.05
137	Youngstown-Warren Regional APT ARS	27.3	25.07	30.53	12.85	73.97
138	Great Falls IAP AGS	27.2	27.1	27.61	17.43	62.23
139	Duluth IAP AGS	24.7	23.5	25.17	17.49	66.75
140	Springfield-Beckley MPT AGS	24.5	24.06	25.02	12.97	71.74

Rank	Base	SOF	Current / Future Mission	Condition of Infrastructure	Contingency, Mobilization, Future Forces	Cost of Ops / Manpower
141	Yeager APT AGS	23.4	26.94	18.54	12.58	81.12
142	Mansfield Lahm MAP AGS	23.2	22.42	21.81	19.84	74.01
143	Goodfellow AFB	7.2	0	3.6	36.4	82.66
144	Brooks City-Base	7.07	0	3.6	36.4	77.48
145	Malmstrom AFB	6.7	0	3.6	36.4	62.67
146	Francis E. Warren AFB	5.99	0	3.6	27.41	70.53
147	Schriever AFB	5.61	0	3.6	27.31	55.46
148	Rome Laboratory	4.75	0	3.6	16.8	63.1
149	Air Reserve Personnel Center (ARPC)	4.52	0	3.6	16.8	53.84
150	United States Air Force Academy	4.42	0	3.6	13.92	61.68
151	Cheyenne Mountain AFS	4.07	0	3.6	11.89	55.61
152	Bolling AFB	3.42	0	3.6	9.07	40.62
153	Onizuka AFS	2.92	0	3.6	10.08	16.85
154	Los Angeles AFB	2.28	0	3.6	1.94	23.81

Rank	Base	UAV	Current / Future Mission	Condition of Infrastructure	Contingency, Mobilization, Future Forces	Cost of Ops / Manpower
1	Seymour Johnson AFB	93.59	91.03	96.36	96.02	85.03
2	Moody AFB	89.88	87.74	91.55	92.5	91.37
3	MacDill AFB	87.68	78.74	95.31	100	76.56
4	Eglin AFB	87.13	78.81	93.05	100	90.39
5	Charleston AFB	86.52	80.71	95.78	77.5	75.49
6	Robins AFB	86.43	77.79	95.77	87.16	87.45
7	Tyndall AFB	85.36	84.09	88.33	77.5	90.98
8	Langley AFB	84.59	78.75	95.55	67.76	77.2
8	Shaw AFB	84.59	78.14	89.79	92.52	85.64
10	Pope AFB	84.07	84.8	94.48	37	86.08
11	Nellis AFB	82.35	79.65	94.28	54.82	43.94
12	Hurlburt Field	82.22	79.69	92.99	47.87	87.18
13	Edwards AFB	82.1	81.07	81.76	98.6	40.87
14	Luke AFB	81.42	79.81	92.26	46.96	68.92
15	March ARB	80.41	81.53	92.57	33.47	45.41
16	Kirtland AFB	80.07	69.46	89.98	90.4	69.56
17	Hill AFB	79.39	68.52	88.37	92.5	77.82
18	Holloman AFB	78.8	71.78	89.43	67.86	75.23
19	Little Rock AFB	78.75	66.33	89.3	89.81	88.12
20	Davis-Monthan AFB	78.62	70.94	91.98	60.16	71.89
21	Mountain Home AFB	78.18	65.91	90.43	86.23	68.58
22	Barksdale AFB	78.15	64.06	88.46	99.52	80.79
23	Eielson AFB	77.36	65.92	88.26	100	16.54
24	Dover AFB	77.21	74.27	91.58	34.2	64.93
25	Andrews AFB	75.8	65.96	89.66	72.14	41.74
26	McEntire AGS	75.68	76.04	85.06	32.7	85.19
27	Indian Springs AFS	75.29	83.94	76.69	37.51	43.94
28	Whiteman AFB	75.06	61.63	88.66	80.57	74.42
29	Jacksonville IAP AGS	75.01	86.63	74.37	23.51	77.87
30	Homestead ARS	74.95	68.69	89.81	47.38	53.65
31	Fairchild AFB	74.12	61.03	87	80.88	73.99
32	McConnell AFB	74.09	67.61	89.3	40.32	75.83
33	Beale AFB	73.49	65.44	85.11	70	42.78
34	Tinker AFB	73.31	65.36	83.66	63.66	85.8
35	Boise Air Terminal AGS	73.07	65.17	89.79	38.69	78.4
36	Patrick AFB	72.94	79.87	72.47	44.48	66.83
37	Elmendorf AFB	72.76	58.35	87.82	92.5	8.86
38	Vandenberg AFB	72.37	62.04	85.26	76.44	32.48
38	Dyess AFB	72.37	59	88.59	65.28	77.64
40	Maxwell AFB	71.67	76.58	79.65	12.47	85.68
41	Columbus AFB	71.57	67.19	74.9	72.13	94.97
42	Altus AFB	71.4	65.2	75.19	81.9	80.99
43	Dobbins ARB	71.34	67.85	86.19	26.7	67.58
44	Buckley AFB	71.28	59.26	86.13	69.41	53.78
45	Grand Forks AFB	70.93	57.4	85.56	70.36	79.09
46	Rosecrans Memorial APT AGS	70.09	63.34	84.85	37	81.65
47	McGuire AFB	69.92	59.32	80.98	80.89	37.26

Rank	Base	UAV	Current / Future Mission	Condition of Infrastructure	Contingency, Mobilization, Future Forces	Cost of Ops / Manpower
48	Ellsworth AFB	69.73	53.57	84.97	77.99	81.32
49	Travis AFB	69.53	60.58	89.86	37.58	24.22
50	Wright-Patterson AFB	69.3	56.68	79.56	83.64	74.09
51	McChord AFB	69.04	60.71	88.57	29.24	57.08
52	Cannon AFB	68.91	62.2	85.08	31.53	73.61
53	Ellington Field AGS	68.78	63.01	73.6	77.29	61.2
54	Hickam AFB	68.25	61.83	86.7	38.04	1.12
55	NAS New Orleans ARS	68.17	68.05	82.63	7.58	72.63
56	Richmond IAP AGS	68.08	83.3	65.36	7.59	75.18
57	Atlantic City IAP AGS	67.55	69.15	72.15	47.7	41.33
58	Minot AFB	67.53	48.34	85.44	79.92	73.42
59	Savannah IAP AGS	67.27	82.02	62.58	14.5	84.65
60	Portland IAP AGS	67.22	63.96	79.05	34.9	60.13
61	Fort Smith Regional APT AGS	66.4	68.76	72.52	24.49	88.84
62	Andersen AFB	66.19	57.98	84.74	43.52	0
62	Fresno Air Terminal AGS	66.19	75.17	71.07	9.46	46.99
64	Dannelly Field AGS	65.21	74.74	67.44	7	85.51
65	Randolph AFB	64.95	61.17	70.15	57.42	78.51
66	Sheppard AFB	64.77	65.08	74.11	20.72	80.04
67	Otis AGB	64.68	51.23	80.2	67.76	42.04
68	Carswell ARS, NAS Fort Worth Joint Reserve	64.57	66.43	69.33	34.2	72.7
69	Lackland AFB	63.92	60.22	66.89	64.99	78.33
70	Klamath Falls IAP AGS	63.68	63.67	75.86	11.83	69.01
71	W. K. Kellogg APT AGS	63.36	53.14	78.63	47.33	62.57
72	Tucson IAP AGS	63.14	70.88	65.12	16.96	72.7
73	Joe Foss Field AGS	62.15	58.35	70.92	39.32	77.92
74	Selfridge ANGB	62.07	56.04	79.38	22.86	42.51
75	Will Rogers World APT AGS	61.95	65.22	62.09	40.63	84.8
76	Scott AFB	61.57	63.04	70.28	20.48	53.95
77	Barnes MPT AGS	61.49	57.97	72.46	35.69	47.17
78	Phoenix Sky Harbor IAP AGS	61.46	76.55	51.47	31.76	68.42
79	Key Field AGS	61.23	68.61	59.02	32.9	75.4
80	Laughlin AFB	61.06	62.25	56.19	70	84.09
80	Sioux Gateway APT AGS	61.06	58.79	69.82	30.36	79.98
82	Moffett Federal Field AGS	60.91	63.2	74.29	6.16	15.79
83	Willow Grove ARS, NAS Willow Grove Joint Reserve	60.56	65.89	69.03	6.13	39.74
84	Forbes Field AGS	60.48	65.46	59.05	39.3	77.32
85	Des Moines IAP AGS	59.73	57.41	71.9	15.61	76.75
86	Reno-Tahoe IAP AGS	59.47	69.14	61.09	11.28	47.47
87	Burlington IAP AGS	59.38	58.97	70.57	15.33	57.07
88	Westover ARB	59.33	59.19	59.24	62.9	49.23
89	Hulman Regional APT AGS	59.1	56.94	71.62	11.28	82.24
90	Harrisburg IAP AGS	59.02	65.06	64.9	4.2	69.5
91	Peterson AFB	58.41	63.64	58.08	34.9	61.91
92	Pittsburgh IAP AGS	58.27	53.38	68.83	34.3	69.3
93	Channel Islands AGS	58.21	68.06	54.31	37.78	23.21

Rank	Base	UAV	Current / Future Mission	Condition of Infrastructure	Contingency, Mobilization, Future Forces	Cost of Ops / Manpower
94	Luis Munoz Marin IAP AGS	57.68	67.91	61.86	4.2	14.06
95	Kulis AGS	57.67	60.78	70.19	3.78	8.01
96	Birmingham IAP AGS	57.58	66.96	50.79	37.53	77.96
97	Tulsa IAP AGS	57.5	66.58	56.36	14.5	81.03
98	Great Falls IAP AGS	57.35	56.82	62.52	37	62.23
99	Keesler AFB	57.18	72.68	48.57	14.63	85.3
100	Ewvra Sheppard AGS	57.09	67.62	55.86	9.72	73.39
101	Stewart IAP AGS	57.04	60.27	61.08	38.79	3.65
102	Salt Lake City IAP AGS	56.83	68.89	47.87	34.79	71.72
103	Jackson IAP AGS	56.75	65.6	49.99	37	84.66
104	Hector IAP AGS	56.74	59.89	62.91	12.56	72.6
105	Greater Peoria Regional APT AGS	56.57	58.17	61.83	27.86	54.24
106	Toledo Express APT AGS	56.55	55.13	60.08	44.4	72.76
107	Offutt AFB	56.33	52.52	62.6	43.63	73.2
108	McGee Tyson APT AGS	56.22	64.71	55.98	10.69	86.02
109	Charlotte/Douglas IAP AGS	56.07	68.36	53.11	5.38	81.48
109	Capital APT AGS	56.07	59.52	61.41	17.74	57.09
111	Vance AFB	55.91	66.77	53.58	7.68	87.75
112	Nashville IAP AGS	55.89	60.69	53.74	37	78.64
113	Duluth IAP AGS	55.85	54.43	63.1	29.5	66.75
114	Grissom ARB	55.77	48.64	62.41	56.66	73.25
115	Pease International Trade Port AGS	55.73	44.45	73.53	39.16	33.8
116	Memphis IAP AGS	55.7	62.92	51.06	36.76	75.57
117	Martin State APT AGS	55.54	63.99	57.19	8.99	58.71
118	Fort Wayne IAP AGS	54.87	55.02	63.53	12.22	79.17
119	Niagara Falls IAP ARS	54.78	56.76	56.82	37.02	55.66
120	Bradley IAP AGS	54.51	57.5	61.92	12.8	43.06
121	Dane County Regional - Truax Field AGS	54.4	57.59	60.55	12.4	61.55
122	Pittsburgh IAP ARS	54.04	58.13	53.25	34.56	69.59
123	Gen Mitchell IAP ARS	53.84	60.58	50.83	33.78	59.94
124	Hancock Field AGS	53.74	55.13	50.44	57.94	66.32
125	New Castle County Airport AGS	53.6	69.59	46.97	9.12	47.53
126	Youngstown-Warren Regional APT ARS	53.35	55.24	54.07	36.46	73.97
127	Bangor IAP AGS	52.64	53.69	55.18	34.52	63.61
128	Arnold AFS	52.18	53.55	44.13	70	89.61
129	Rickenbacker IAP AGS	51.88	53.57	58.14	13.27	71.11
130	F. S. Gabreski APT AGS	51.58	57.24	56.21	11.8	29.52
131	Gen Mitchell IAP AGS	51.32	58.69	46.8	34.2	59.38
132	Yeager APT AGS	51.21	53.81	52.44	26.7	81.12
133	Lambert - St. Louis IAP AGS	51.04	54.69	57.75	4.2	59.7
134	Louisville IAP AGS	50.76	58.78	45.97	26.91	78.1
135	Minn/St Paul IAP ARS	50.62	48.34	57.23	34.41	47.69
136	Quonset State APT AGS	49.76	55.44	47.67	34.68	40.59
137	Lincoln MAP AGS	49.61	59.41	45.9	14.5	71.2
138	Schenectady County APT AGS	49.44	58.83	43.41	28.64	60.05
139	Springfield-Beckley MPT AGS	48.5	50.71	49.27	29.31	71.74
140	Cheyenne APT AGS	45.76	55.96	35.17	37	68.7

Rank	Base	UAV	Current / Future Mission	Condition of Infrastructure	Contingency, Mobilization, Future Forces	Cost of Ops / Manpower
141	Hanscom AFB	45.36	55.8	44.69	5.02	25.42
142	Mansfield Lahm MAP AGS	44.42	50.27	45.19	7	74.01
143	Goodfellow AFB	7.72	0	3.5	42	82.66
144	Brooks City-Base	7.59	0	3.5	42	77.48
145	Malmstrom AFB	7.22	0	3.5	42	62.67
146	Schriever AFB	6.11	0	3.5	32.66	55.46
147	Francis E. Warren AFB	5.81	0	3.5	25.96	70.53
148	United States Air Force Academy	3.87	0	3.5	8.76	61.68
149	Rome Laboratory	3.73	0	3.5	7	63.1
150	Air Reserve Personnel Center (ARPC)	3.5	0	3.5	7	53.84
151	Cheyenne Mountain AFS	3.36	0	3.5	5.16	55.61
152	Bolling AFB	2.85	0	3.5	3.78	40.62
153	Onizuka AFS	2.29	0	3.5	4.2	16.85
154	Los Angeles AFB	2.13	0	3.5	0.81	23.81

Rank	Base	Airlift	Current / Future Mission	Condition of Infrastructure	Contingency, Mobilization, Future Forces	Cost of Ops / Manpower
1	Eglin AFB	79.43	72.45	81.55	100	90.39
2	Seymour Johnson AFB	78.03	71.25	83.82	83.34	85.03
3	Charleston AFB	74.09	64.57	83.15	79.91	75.49
4	Barksdale AFB	72.43	52.92	87.48	97.7	80.79
5	Altus AFB	71.3	64.97	73.95	87.04	80.99
6	Pope AFB	69.99	71.21	73.4	46.19	86.08
7	Hurlburt Field	69.61	75.12	67.11	50.15	87.18
8	Tinker AFB	68.62	55.2	80.62	76.23	85.8
9	Shaw AFB	67.7	71.86	59.5	78.12	85.64
10	Eielson AFB	67.34	61.25	73.03	84.43	16.54
11	Dyess AFB	65.95	54.87	76.82	68.94	77.64
12	Holloman AFB	65.78	61.34	70.94	62.43	75.23
13	Edwards AFB	65.53	55.18	75.19	79.33	40.87
14	Fairchild AFB	64.22	52.54	72.85	79.72	73.99
15	Nellis AFB	63.95	59.85	72.31	53.08	43.94
16	Robins AFB	63.89	52.22	71.87	78.5	87.45
17	Little Rock AFB	63.25	49.25	73.05	80.66	88.12
18	Andrews AFB	62.05	54.38	70.4	67.79	41.74
19	Tyndall AFB	61.75	68.65	50.88	67.84	90.98
20	MacDill AFB	60.12	47.48	66.41	88.14	76.56
21	Maxwell AFB	59.9	70.78	55.31	22.48	85.68
22	March ARB	59.86	56.53	71.33	31.15	45.41
23	Mountain Home AFB	59.77	46.58	68.64	81.35	68.58
24	Ellsworth AFB	59.4	42.43	72.78	76.53	81.32
25	McEntire AGS	59.35	71.7	49.85	35.48	85.19
26	Hill AFB	58.83	45.27	66.57	84.33	77.82
27	McChord AFB	57.95	49.64	71.78	38.95	57.08
28	Whiteman AFB	57.82	39.47	71.25	82.33	74.42
29	Columbus AFB	57.51	53.22	58.08	65.55	94.97
30	Peterson AFB	57.2	58.4	59.78	39.75	61.91
31	Langley AFB	56.57	53.37	54.97	72.81	77.2
32	Key Field AGS	56.39	64.14	50.02	42.43	75.4
33	Charlotte/Douglas IAP AGS	56.27	70.45	49.46	12.94	81.48
34	Dover AFB	56.06	48.75	66.73	43.17	64.93
35	Davis-Monthan AFB	55.89	45.11	66	59.49	71.89
36	Grissom ARB	55.66	42.59	68.46	58.32	73.25
37	Kirtland AFB	55.47	49.12	58.01	70.63	69.56
38	Sheppard AFB	55.21	60.81	52.33	35.24	80.04
39	McConnell AFB	54.65	45.85	65.92	43	75.83
40	Beale AFB	54.63	38.4	70.78	65.31	42.78
41	Buckley AFB	54.62	56.16	52.45	56.83	53.78
42	Minot AFB	54.34	39.7	65.42	70.91	73.42
43	Wright-Patterson AFB	54.27	44.62	58.95	74.34	74.09
44	Travis AFB	53.86	41.24	72.89	40.31	24.22
45	Luke AFB	52.17	50.43	55.68	41.35	68.92
46	Westover ARB	52	42.8	58.47	68.13	49.23
47	Forbes Field AGS	51.93	43.85	61.74	42.08	77.32

Rank	Base	Airlift	Current / Future Mission	Condition of Infrastructure	Contingency, Mobilization, Future Forces	Cost of Ops / Manpower
48	McGuire AFB	51.8	39.42	62.51	67.95	37.26
49	Moody AFB	51.72	52.29	41.64	81.05	91.37
50	Ellington Field AGS	51.65	47.25	53.91	60.12	61.2
51	Elmendorf AFB	51.6	29.97	70.05	85.17	8.86
52	Birmingham IAP AGS	50.93	53.99	48.35	40.7	77.96
53	Carswell ARS, NAS Fort Worth Joint Reserve	50.57	53.62	50.3	32.08	72.7
54	Grand Forks AFB	50.53	35.28	62.52	63.66	79.09
55	Rickenbacker IAP AGS	50.04	45.27	61.23	20.26	71.11
56	Hickam AFB	49.77	34.58	66.93	60.5	1.12
57	Andersen AFB	49.64	30.79	70.34	62.87	0
58	Dannelly Field AGS	49.46	69.74	31.75	20.6	85.51
59	Randolph AFB	49.2	43.66	51.76	56.76	78.51
60	McGee Tyson APT AGS	48.32	47.96	51.87	25.79	86.02
61	Homestead ARS	48.15	37.64	59.36	48.73	53.65
62	Phoenix Sky Harbor IAP AGS	48.12	53.14	45.21	32.12	68.42
63	Memphis IAP AGS	48.01	50.94	45.72	37.17	75.57
64	Will Rogers World APT AGS	47.79	56.31	37.47	42.22	84.8
65	Lackland AFB	47.44	45.03	44.29	63.85	78.33
66	Boise Air Terminal AGS	47.32	46.89	46.65	44.25	78.4
67	Selfridge ANGB	47.27	44.66	52.56	38.56	42.51
68	Offutt AFB	47.07	43.55	49.1	48.25	73.2
69	Keesler AFB	46.8	64.62	29.62	26.47	85.3
70	Pease International Trade Port AGS	46.65	43.72	52.48	39.09	33.8
71	Dobbins ARB	46.5	51.35	44.38	27.71	67.58
72	Laughlin AFB	46.13	46.75	39.38	61.81	84.09
73	Indian Springs AFS	45.8	60.77	31.08	38.5	43.94
74	Jacksonville IAP AGS	45.79	53.89	38.47	30.75	77.87
75	Stewart IAP AGS	45.53	45.03	49.72	40.99	3.65
76	Cannon AFB	45.43	45.45	43.94	44.4	73.61
77	Savannah IAP AGS	45.1	52.68	38.84	26.3	84.65
78	Pittsburgh IAP AGS	44.85	36.28	55.13	35.53	69.3
79	Louisville IAP AGS	44.66	49.33	41.32	28.67	78.1
80	Scott AFB	44.55	39.62	52.04	33.65	53.95
81	Vandenberg AFB	44.16	40.15	43.97	66.26	32.48
82	Jackson IAP AGS	44.15	47.37	39.33	39.24	84.66
83	Salt Lake City IAP AGS	43.99	45.47	43.47	32.41	71.72
84	Bangor IAP AGS	43.83	43.24	42.24	48.22	63.61
85	Vance AFB	43.45	55.12	32.89	22.51	87.75
86	Tulsa IAP AGS	43.2	49.4	38.74	23.72	81.03
87	Lincoln MAP AGS	43.08	45.83	42.39	26.26	71.2
88	Harrisburg IAP AGS	42.89	47.01	44.21	11.84	69.5
89	Richmond IAP AGS	42.64	53.44	35.69	13.67	75.18
90	Fort Smith Regional APT AGS	42.58	52.08	31.91	31.62	88.84
91	Portland IAP AGS	42.32	46.23	37.58	39.48	60.13
91	Fort Wayne IAP AGS	42.32	48.09	39.65	17.72	79.17
93	Burlington IAP AGS	42.29	51.69	34.88	26	57.07
94	Patrick AFB	42.23	47	32.91	52.75	66.83

Rank	Base	Airlift	Current / Future Mission	Condition of Infrastructure	Contingency, Mobilization, Future Forces	Cost of Ops / Manpower
95	Gen Mitchell IAP AGS	41.98	40.89	43.76	35.25	59.38
96	Tucson IAP AGS	41.92	45.19	39.16	30.57	72.7
96	Channel Islands AGS	41.92	44.04	42.05	36.32	23.21
98	NAS New Orleans ARS	41.65	46.93	39.81	17.2	72.63
99	Minn/St Paul IAP ARS	41.52	32.19	52.63	36.8	47.69
100	Toledo Express APT AGS	41.45	44.03	36.46	42.51	72.76
101	Reno-Tahoe IAP AGS	40.51	44.93	39.29	23.44	47.47
102	Youngstown-Warren Regional APT ARS	40.09	40.95	38.26	35.23	73.97
103	Niagara Falls IAP ARS	40.03	35.85	43.28	41.92	55.66
104	Nashville IAP AGS	39.77	48.71	27.61	39.33	78.64
105	Pittsburgh IAP ARS	39.64	36.28	42.44	36.01	69.59
106	Joe Foss Field AGS	39.59	36.23	40.62	41.13	77.92
107	Sioux Gateway APT AGS	39.3	39.33	37.14	38.03	79.98
108	W. K. Kellogg APT AGS	39.22	38.19	37.74	44.28	62.57
109	Otis AGB	38.95	36.97	36.9	55.82	42.04
110	Kulis AGS	38.93	43.14	42.67	11.81	8.01
111	Atlantic City IAP AGS	38.81	45.55	31.54	37.39	41.33
112	Hulman Regional APT AGS	38.63	42.75	36.72	16.55	82.24
113	Dane County Regional - Truax Field AGS	38.59	42.35	37.71	19.21	61.55
114	Rosecrans Memorial APT AGS	38.22	40.01	32.73	41.97	81.65
115	Bradley IAP AGS	37.83	43.58	36.03	17.46	43.06
116	Barnes MPT AGS	37.75	43.93	31.39	33.33	47.17
117	Schenectady County APT AGS	37.72	49.21	25.33	30.66	60.05
118	Cheyenne APT AGS	37.65	46.92	24.3	42.72	68.7
119	Mansfield Lahm MAP AGS	37.28	42.33	33.5	20.6	74.01
120	New Castle County Airport AGS	36.96	48.83	28.33	15.48	47.53
121	Luis Munoz Marin IAP AGS	36.78	42.16	38.47	10.74	14.06
122	Hancock Field AGS	36.2	44.61	21.04	52.9	66.32
123	Willow Grove ARS, NAS Willow Grove Joint Reserve	35.85	43.92	32.22	12.92	39.74
124	Great Falls IAP AGS	35.51	35.71	32.68	39.59	62.23
125	Quonset State APT AGS	35.29	40.77	29.32	33.62	40.59
126	Klamath Falls IAP AGS	35.18	38.18	32.91	22.29	69.01
127	Greater Peoria Regional APT AGS	34.56	35.77	32.28	33.46	54.24
128	Capital APT AGS	34.53	36.96	32.03	28.06	57.09
129	Arnold AFS	34.22	44.49	13.9	57.35	89.61
130	Gen Mitchell IAP ARS	33.77	40.89	24.5	32.87	59.94
131	Springfield-Beckley MPT AGS	33.54	41.59	23.23	29.78	71.74
131	Des Moines IAP AGS	33.54	35.7	30.8	24.21	76.75
133	Moffett Federal Field AGS	33.14	40.1	31.66	11.59	15.79
134	Ewvra Sheppard AGS	33.11	47.05	17.83	22.37	73.39
135	Fresno Air Terminal AGS	32.77	46.12	21.98	12.56	46.99
136	Lambert - St. Louis IAP AGS	32.04	29.73	37.4	13.46	59.7
137	Yeager APT AGS	31.9	40.64	19.79	29.7	81.12
138	Hector IAP AGS	30.78	38.72	21.49	22.3	72.6
139	Duluth IAP AGS	30.43	35.49	21.71	34.16	66.75
140	Martin State APT AGS	30.37	50.13	10.15	16.26	58.71

Rank	Base	Airlift	Current / Future Mission	Condition of Infrastructure	Contingency, Mobilization, Future Forces	Cost of Ops / Manpower
141	F. S. Gabreski APT AGS	30.21	41.65	20.77	16.92	29.52
142	Hanscom AFB	29.65	42.58	20.17	10.54	25.42
143	Goodfellow AFB	7.37	0	4	36.4	82.66
144	Brooks City-Base	7.24	0	4	36.4	77.48
145	Malmstrom AFB	6.87	0	4	36.4	62.67
146	Francis E. Warren AFB	6.16	0	4	27.41	70.53
147	Schriever AFB	5.78	0	4	27.31	55.46
148	Rome Laboratory	4.92	0	4	16.8	63.1
149	Air Reserve Personnel Center (ARPC)	4.69	0	4	16.8	53.84
150	United States Air Force Academy	4.59	0	4	13.92	61.68
151	Cheyenne Mountain AFS	4.24	0	4	11.89	55.61
152	Bolling AFB	3.59	0	4	9.07	40.62
153	Onizuka AFS	3.09	0	4	10.08	16.85
154	Los Angeles AFB	2.45	0	4	1.94	23.81

Rank	Base	Fighter	Current / Future Mission	Condition of Infrastructure	Contingency, Mobilization, Future Forces	Cost of Ops / Manpower
1	Seymour Johnson AFB	83.24	77.95	89.63	80.45	85.03
2	Langley AFB	82.84	87.59	80.51	72.12	77.2
3	Eglin AFB	81.4	74.55	83.97	100	90.39
4	Hurlburt Field	77.43	76.75	84.64	48.05	87.18
5	MacDill AFB	75.6	70.48	78.78	85.77	76.56
6	Tyndall AFB	73.63	64.75	83.78	68	90.98
7	Shaw AFB	72.2	59.83	84.47	74.79	85.64
8	Edwards AFB	71.92	68.64	76.49	75.87	40.87
9	Moody AFB	70.8	57.19	82.55	79.47	91.37
10	Holloman AFB	69.82	60.27	81.84	62.59	75.23
11	Eielson AFB	69.09	58.65	80.9	81.32	16.54
12	Luke AFB	69.06	65.65	79.48	41.64	68.92
13	Nellis AFB	68.73	60.85	82.32	54.77	43.94
14	Hill AFB	68.02	56.88	76.08	83.39	77.82
15	Dover AFB	66.69	61.48	78.78	40.99	64.93
16	Kirtland AFB	66.44	55.39	78.12	67.96	69.56
17	Pope AFB	65.86	58.95	77.74	43.27	86.08
18	Patrick AFB	64.96	71.07	61.64	50.22	66.83
19	Charleston AFB	64.94	59.12	66.51	82.49	75.49
20	March ARB	64.84	68.31	71.06	27.89	45.41
21	Andrews AFB	64.83	63.23	67.83	65.5	41.74
22	Davis-Monthan AFB	63.83	50.51	79.71	57.21	71.89
23	Mountain Home AFB	63.01	48.16	75.17	79.54	68.58
24	Jacksonville IAP AGS	61.8	73.95	54.71	31.25	77.87
25	Barksdale AFB	61.49	43.76	71.35	97.29	80.79
26	Altus AFB	61.43	53.79	62.69	86.47	80.99
27	Little Rock AFB	60.78	46.05	71.32	78.03	88.12
28	McChord AFB	60.73	49.83	77.97	40.23	57.08
29	Fairchild AFB	60.32	43.09	74.35	77.86	73.99
30	Maxwell AFB	59.61	61.81	64.46	22.86	85.68
31	Homestead ARS	59.17	52.11	70.75	44.96	53.65
32	Robins AFB	59.13	47.51	66.23	76	87.45
33	Indian Springs AFS	59.11	60.96	62.87	38.84	43.94
34	Dyess AFB	58.96	40.51	76.07	68.18	77.64
35	Tinker AFB	58.47	49.29	62.76	75.96	85.8
36	Elmendorf AFB	58.35	37.02	78.71	84.41	8.86
37	Whiteman AFB	58.18	39.23	72.69	80.97	74.42
38	Beale AFB	58.1	48.35	67.63	67.18	42.78
39	Ellsworth AFB	58.06	38.76	74.01	74.92	81.32
40	Savannah IAP AGS	57.8	65.2	55.63	26	84.65
41	McGuire AFB	57.02	44.52	70.22	64.69	37.26
42	Minot AFB	56.64	39.53	71.88	67.9	73.42
43	McConnell AFB	56.47	47.44	68.32	44	75.83
44	Travis AFB	56.42	45.93	74.31	38.42	24.22
45	Sheppard AFB	56.26	53.87	62.12	37.03	80.04
46	Grand Forks AFB	55.88	38.31	72.05	63.79	79.09
47	Lackland AFB	55.79	46.6	63.36	60.98	78.33
48	McEntire AGS	55.74	59.4	55.01	34.56	85.19
49	Richmond IAP AGS	55.34	66.15	52.13	13.98	75.18
50	Cannon AFB	55.22	39.54	74.41	43.06	73.61

Rank	Base	Fighter	Current / Future Mission	Condition of Infrastructure	Contingency, Mobilization, Future Forces	Cost of Ops / Manpower
51	Wright-Patterson AFB	54.48	42.76	62.01	72.32	74.09
52	Hickam AFB	53.47	41.69	68.03	60.32	1.12
53	Phoenix Sky Harbor IAP AGS	52.3	62.83	45.3	28.91	68.42
54	Keesler AFB	52.07	59.95	47.57	26.19	85.3
55	Martin State APT AGS	51.42	61.01	48.71	16.83	58.71
56	Reno-Tahoe IAP AGS	51.34	61.17	47.23	24.11	47.47
57	Andersen AFB	51.26	37.23	67.15	62.55	0
58	Carswell ARS, NAS Fort Worth Joint Reserve	51.01	53.16	52.93	27.68	72.7
59	Boise Air Terminal AGS	50.86	46.69	56.24	40.75	78.4
60	Dannelly Field AGS	50.66	56.99	48.57	21.36	85.51
61	Atlantic City IAP AGS	50.22	53.44	50.22	37.74	41.33
62	Salt Lake City IAP AGS	50.13	60.83	42.03	29.21	71.72
63	Columbus AFB	49.85	40.27	54.88	61.78	94.97
64	Buckley AFB	49.82	43.25	55.99	53.35	53.78
65	Klamath Falls IAP AGS	49.81	39.6	66.48	22.71	69.01
66	Willow Grove ARS, NAS Willow Grove Joint Reserve	49.69	45.93	63.23	13.27	39.74
67	Tucson IAP AGS	49.54	50.59	51.5	30.82	72.7
68	Randolph AFB	48.7	44.96	49.93	53.43	78.51
69	Westover ARB	48.41	38.05	55.37	66.96	49.23
70	Selfridge ANGB	48.07	35.89	63.74	40.5	42.51
71	Scott AFB	47.91	46.43	52.26	35.09	53.95
72	Channel Islands AGS	47.27	46.92	52.73	32.3	23.21
73	Offutt AFB	47.16	43.03	50.37	46.36	73.2
74	Peterson AFB	46.82	44.97	50.41	36.55	61.91
75	Forbes Field AGS	46.55	44.27	49.3	38.02	77.32
76	Vandenberg AFB	46.05	31.09	59.43	62.81	32.48
77	Portland IAP AGS	45.95	38.07	56.19	36.22	60.13
78	Will Rogers World APT AGS	45.61	49.61	40.65	38.01	84.8
79	NAS New Orleans ARS	45.54	46.23	49.96	17.2	72.63
80	Ellington Field AGS	45.39	37.87	50.14	56.27	61.2
80	Vance AFB	45.39	42.69	51.09	23.57	87.75
82	Grissom ARB	45.2	36.85	50.37	55.24	73.25
83	Stewart IAP AGS	45.15	38.24	57.05	37.85	3.65
84	New Castle County Airport AGS	44.4	57.19	36.9	15.9	47.53
85	Moffett Federal Field AGS	44.05	46.92	50.38	11.68	15.79
86	Ewvra Sheppard AGS	43.4	50.03	39.16	23.11	73.39
87	Fresno Air Terminal AGS	43.09	46.13	47.02	11.93	46.99
88	Otis AGB	42.83	28.15	56	55.91	42.04
89	Rickenbacker IAP AGS	42.74	39.57	50.05	19.92	71.11
90	Key Field AGS	42.66	43.27	40.54	40.48	75.4
91	Laughlin AFB	42.63	36.05	42.54	62.97	84.09
92	Lincoln MAP AGS	42.55	43.82	43.39	25.95	71.2
93	Memphis IAP AGS	42.44	41.35	43.82	33.43	75.57
94	Hancock Field AGS	42.03	35.71	45.6	50.23	66.32
95	Barnes MPT AGS	42.02	38.75	48.16	30.19	47.17
96	Luis Munoz Marin IAP AGS	41.83	52.6	39.02	10.87	14.06
97	Rosecrans Memorial APT AGS	41.25	38.89	42.16	38.2	81.65
98	Quonset State APT AGS	41.1	37.12	48.34	29.47	40.59
98	Nashville IAP AGS	41.1	41.57	39.78	35.03	78.64

Rank	Base	Fighter	Current / Future Mission	Condition of Infrastructure	Contingency, Mobilization, Future Forces	Cost of Ops / Manpower
100	Jackson IAP AGS	40.91	36.79	44.29	34.93	84.66
101	Pease International Trade Port AGS	40.83	38.23	45.08	36.8	33.8
102	Burlington IAP AGS	40.79	41.33	42.88	25.52	57.07
103	Kulis AGS	40.76	41.31	48.96	12.36	8.01
104	Dobbins ARB	40.33	39.32	43.6	24.63	67.58
105	Cheyenne APT AGS	40.13	38	41	39.11	68.7
106	Bradley IAP AGS	40.1	38.08	47.75	16.75	43.06
107	Harrisburg IAP AGS	39.79	41.24	43.04	12.19	69.5
108	Sioux Gateway APT AGS	39.5	31.47	46.88	35.58	79.98
109	Birmingham IAP AGS	39.24	37.95	38.69	37.65	77.96
110	F. S. Gabreski APT AGS	38.63	35.33	48.26	16.07	29.52
110	Fort Smith Regional APT AGS	38.63	39.63	36.31	31.14	88.84
112	Joe Foss Field AGS	38.59	30.04	46.09	36.91	77.92
113	Charlotte/Douglas IAP AGS	38.49	38.36	42.07	13.38	81.48
114	Tulsa IAP AGS	38.41	36.83	41.33	22.9	81.03
115	Capital APT AGS	38.18	38.51	39.2	27.74	57.09
116	Niagara Falls IAP ARS	38.13	28.96	47.01	39.09	55.66
117	Great Falls IAP AGS	37.85	31.45	44.04	35.35	62.23
118	W. K. Kellogg APT AGS	37.6	27.31	46.76	40.73	62.57
119	Hulman Regional APT AGS	37.45	36.53	40.99	15.84	82.24
120	Hanscom AFB	37.29	40.55	40.84	10.54	25.42
121	McGee Tyson APT AGS	37.24	35.63	38.3	28.11	86.02
122	Dane County Regional - Truax Field AGS	37.22	32.04	45.99	18.5	61.55
123	Toledo Express APT AGS	36.85	32.71	38.44	40.29	72.76
124	Louisville IAP AGS	36.56	35.55	37.78	25.76	78.1
125	Hector IAP AGS	36.11	30.93	42.85	22.75	72.6
126	Arnold AFS	35.94	30.95	33	57.62	89.61
127	Lambert - St. Louis IAP AGS	35.93	37.28	38.26	14.14	59.7
128	Springfield-Beckley MPT AGS	35.37	35.33	35.31	26.8	71.74
129	Gen Mitchell IAP ARS	34.5	28.03	41.52	28.83	59.94
130	Fort Wayne IAP AGS	34.49	32.75	37.92	16.99	79.17
131	Bangor IAP AGS	34.47	27.19	37.72	47.2	63.61
132	Greater Peoria Regional APT AGS	34.4	34.13	33.86	32.89	54.24
133	Pittsburgh IAP AGS	34.04	22.6	45.14	31.81	69.3
134	Schenectady County APT AGS	33.59	33.31	33.66	27.95	60.05
135	Gen Mitchell IAP AGS	33.55	28.03	38.62	31.48	59.38
136	Duluth IAP AGS	32.55	23.88	40.48	31.03	66.75
137	Des Moines IAP AGS	32.35	28.67	35.92	23.34	76.75
138	Pittsburgh IAP ARS	30.86	22.6	37.3	32.36	69.59
139	Minn/St Paul IAP ARS	30.25	18.73	41.24	33.25	47.69
140	Mansfield Lahm MAP AGS	29.24	26.31	31.69	21.36	74.01
141	Youngstown-Warren Regional APT ARS	28.84	19.56	35.83	31.21	73.97
142	Yeager APT AGS	28.68	26.99	27.78	27.03	81.12
143	Goodfellow AFB	8	0	5.51	36.4	82.66
144	Brooks City-Base	7.87	0	5.51	36.4	77.48
145	Malmstrom AFB	7.5	0	5.51	36.4	62.67
146	Francis E. Warren AFB	6.79	0	5.51	27.41	70.53
147	Schriever AFB	6.41	0	5.51	27.31	55.46
148	Rome Laboratory	5.55	0	5.51	16.8	63.1
149	Air Reserve Personnel Center (ARPC)	5.32	0	5.51	16.8	53.84

Rank	Base	Fighter	Current / Future Mission	Condition of Infrastructure	Contingency, Mobilization, Future Forces	Cost of Ops / Manpower
150	United States Air Force Academy	5.22	0	5.51	13.92	61.68
151	Cheyenne Mountain AFS	4.87	0	5.51	11.89	55.61
152	Bolling AFB	4.22	0	5.51	9.07	40.62
153	Onizuka AFS	3.72	0	5.51	10.08	16.85
154	Los Angeles AFB	3.08	0	5.51	1.94	23.81

Rank	Base	Bomber	Current / Future Mission	Condition of Infrastructure	Contingency, Mobilization, Future Forces	Cost of Ops / Manpower
1	Seymour Johnson AFB	78.41	80.55	75.14	80.45	85.03
2	Eglin AFB	70.16	62.88	69.82	100	90.39
3	Nellis AFB	68.33	70.74	70.39	54.77	43.94
4	Edwards AFB	68.23	65.51	71.06	75.87	40.87
5	Robins AFB	66.62	62.78	67.36	76	87.45
6	Pope AFB	66.54	75.85	60.66	43.27	86.08
7	Shaw AFB	62.97	67.99	53.19	74.79	85.64
8	Moody AFB	62.36	69.98	48.06	79.47	91.37
9	Langley AFB	62.02	76.3	42.84	72.12	77.2
10	MacDill AFB	61.87	66.44	50.18	85.77	76.56
11	Charleston AFB	61.01	64.68	50.88	82.49	75.49
12	Tyndall AFB	60.8	67.54	49.79	68	90.98
13	Barksdale AFB	60.74	42.61	70.82	97.29	80.79
14	Tinker AFB	60.4	65.22	49.77	75.96	85.8
15	March ARB	58.79	64.12	61.12	27.89	45.41
16	Hill AFB	58.73	45.5	66.3	83.39	77.82
17	Mountain Home AFB	58.44	49.99	62.13	79.54	68.58
18	Andrews AFB	57.19	62.12	50.65	65.5	41.74
19	Hurlburt Field	56.79	63.33	49.8	48.05	87.18
20	Dyess AFB	56.7	51.2	58.78	68.18	77.64
20	Indian Springs AFS	56.7	69.99	47.03	38.84	43.94
22	Holloman AFB	56.57	56.48	54.1	62.59	75.23
23	McConnell AFB	56.28	52.88	61.83	44	75.83
24	Whiteman AFB	56.03	40.12	66.54	80.97	74.42
25	Little Rock AFB	55.78	45.87	59.48	78.03	88.12
26	Kirtland AFB	55.27	54.99	51.65	67.96	69.56
27	Davis-Monthan AFB	54.24	46.78	60.73	57.21	71.89
28	Altus AFB	53.79	56.06	41.75	86.47	80.99
29	McEntire AGS	53.76	66.96	41.86	34.56	85.19
30	Beale AFB	53.29	41.7	63.42	67.18	42.78
31	Luke AFB	52.87	57.37	49.63	41.64	68.92
32	Fairchild AFB	52.78	42.42	56.94	77.86	73.99
33	Jacksonville IAP AGS	52.71	68.04	39.34	31.25	77.87
34	Dover AFB	52.25	56.13	49.91	40.99	64.93
35	Eielson AFB	52.12	52.76	46.54	81.32	16.54
36	Columbus AFB	51.5	51.47	46.44	61.78	94.97
37	Homestead ARS	51.44	46.37	58.47	44.96	53.65
38	Richmond IAP AGS	51	72.78	34.31	13.98	75.18
39	Ellsworth AFB	50.81	32.52	63.44	74.92	81.32
40	Patrick AFB	50.47	63.35	35.27	50.22	66.83
41	Savannah IAP AGS	49.22	66.38	33.66	26	84.65
42	Maxwell AFB	47.77	66.39	30.85	22.86	85.68
43	McGuire AFB	47.61	38.54	54.18	64.69	37.26
44	Dannelly Field AGS	47.39	65.89	30.85	21.36	85.51
45	Sheppard AFB	47.32	53.91	40.52	37.03	80.04
46	Travis AFB	46.72	39.57	58	38.42	24.22
47	Wright-Patterson AFB	46.06	34.29	51.12	72.32	74.09

Rank	Base	Bomber	Current / Future Mission	Condition of Infrastructure	Contingency, Mobilization, Future Forces	Cost of Ops / Manpower
48	Charlotte/Douglas IAP AGS	46.03	64.45	31.32	13.38	81.48
49	Minot AFB	45.72	31.04	54.97	67.9	73.42
50	Cannon AFB	45.7	53.46	36.06	43.06	73.61
51	Dobbins ARB	44.89	53.32	39.07	24.63	67.58
52	Elmendorf AFB	44.49	32.65	50.14	84.41	8.86
53	Lackland AFB	44.03	41.87	40.27	60.98	78.33
54	McChord AFB	43.63	43.14	44.2	40.23	57.08
55	Martin State APT AGS	43.55	55.68	35.65	16.83	58.71
56	Forbes Field AGS	43.47	46.3	39.62	38.02	77.32
57	Key Field AGS	43.24	56.67	27.07	40.48	75.4
58	Vandenberg AFB	43.19	38.2	44.64	62.81	32.48
59	Phoenix Sky Harbor IAP AGS	41.64	56.6	26.51	28.91	68.42
60	Offutt AFB	41.43	40.26	39.61	46.36	73.2
61	Tulsa IAP AGS	41.3	52.04	31.42	22.9	81.03
62	Ewvra Sheppard AGS	41.26	54.12	29.44	23.11	73.39
63	Birmingham IAP AGS	41.19	53.21	26.47	37.65	77.96
64	Carswell ARS, NAS Fort Worth Joint Reserve	41.01	50.68	31.59	27.68	72.7
65	Andersen AFB	40.98	28.05	52.58	62.55	0
66	Fresno Air Terminal AGS	40.71	56.35	29.95	11.93	46.99
67	Laughlin AFB	40.64	43.85	29.09	62.97	84.09
68	Channel Islands AGS	40.56	46.53	36.99	32.3	23.21
69	Will Rogers World APT AGS	40.43	55.77	21.34	38.01	84.8
70	Keesler AFB	40.31	57.31	22.17	26.19	85.3
71	Harrisburg IAP AGS	39.87	44.67	39.41	12.19	69.5
72	Hickam AFB	39.79	29.71	48.33	60.32	1.12
73	Boise Air Terminal AGS	39.7	46.08	30.03	40.75	78.4
74	Reno-Tahoe IAP AGS	39.43	52.59	28.06	24.11	47.47
75	Grissom ARB	39.39	33.88	39.67	55.24	73.25
76	Atlantic City IAP AGS	39.38	48.73	29.29	37.74	41.33
77	Jackson IAP AGS	39.1	50.85	24.34	34.93	84.66
78	Tucson IAP AGS	38.53	46.72	29.26	30.82	72.7
79	Grand Forks AFB	38.48	30.2	39.12	63.79	79.09
80	Westover ARB	38.4	32.95	36.88	66.96	49.23
81	Vance AFB	38.35	55.09	20.38	23.57	87.75
82	McGee Tyson APT AGS	37.15	47.95	24.42	28.11	86.02
83	New Castle County Airport AGS	36.34	49.8	25.67	15.9	47.53
84	Salt Lake City IAP AGS	36.05	46.05	24.49	29.21	71.72
85	Lincoln MAP AGS	36	41.96	29.69	25.95	71.2
86	Randolph AFB	35.93	41	23.55	53.43	78.51
87	Pittsburgh IAP AGS	35.7	31.56	39.2	31.81	69.3
88	Fort Smith Regional APT AGS	35.67	44.09	24.25	31.14	88.84
89	NAS New Orleans ARS	35.59	44.81	27.56	17.2	72.63
90	Willow Grove ARS, NAS Willow Grove Joint Reserve	35.58	41.57	34.08	13.27	39.74
91	Nashville IAP AGS	35.06	40.91	25.95	35.03	78.64
92	Memphis IAP AGS	35.01	45.52	21.31	33.43	75.57
93	Arnold AFS	34.53	36.99	22.91	57.62	89.61

Rank	Base	Bomber	Current / Future Mission	Condition of Infrastructure	Contingency, Mobilization, Future Forces	Cost of Ops / Manpower
94	Rickenbacker IAP AGS	34.52	33.03	37.5	19.92	71.11
95	Selfridge ANGB	33.86	31.6	34.23	40.5	42.51
96	Scott AFB	33.83	40.51	24.91	35.09	53.95
97	Rosecrans Memorial APT AGS	33.71	40.09	22.68	38.2	81.65
98	Ellington Field AGS	33.67	36.97	22.9	56.27	61.2
99	Portland IAP AGS	33.4	42.65	20.87	36.22	60.13
100	Pittsburgh IAP ARS	32.61	31.56	31.58	32.36	69.59
101	Yeager APT AGS	31.91	39.61	21.58	27.03	81.12
102	Bangor IAP AGS	31.45	29.03	28.42	47.2	63.61
103	Klamath Falls IAP AGS	31.24	35.89	25.85	22.71	69.01
104	Moffett Federal Field AGS	31.14	40	26.93	11.68	15.79
105	Sioux Gateway APT AGS	31	34.88	22.65	35.58	79.98
106	Hancock Field AGS	30.97	30.67	24.52	50.23	66.32
107	Capital APT AGS	30.83	36.13	24.12	27.74	57.09
108	Peterson AFB	30.31	39	17.26	36.55	61.91
109	Buckley AFB	30.16	36.49	16.11	53.35	53.78
110	Lambert - St. Louis IAP AGS	29.78	30.67	30.76	14.14	59.7
111	Burlington IAP AGS	29.72	36.12	21.97	25.52	57.07
112	Barnes MPT AGS	29.69	33.02	24.81	30.19	47.17
113	Stewart IAP AGS	29.57	36.84	21.05	37.85	3.65
114	Luis Munoz Marin IAP AGS	29.31	38.4	24.6	10.87	14.06
115	Toledo Express APT AGS	28.79	31.04	20.86	40.29	72.76
116	Hulman Regional APT AGS	28.72	33.66	23.13	15.84	82.24
117	Greater Peoria Regional APT AGS	28.26	34.06	19.13	32.89	54.24
118	Otis AGB	28.25	23.68	25.82	55.91	42.04
119	Pease International Trade Port AGS	27.84	33	19.58	36.8	33.8
120	W. K. Kellogg APT AGS	27.47	27.89	21.72	40.73	62.57
121	Bradley IAP AGS	27.43	32.69	23.2	16.75	43.06
122	Joe Foss Field AGS	27.41	30.59	18.56	36.91	77.92
123	Schenectady County APT AGS	27.35	35.02	16.72	27.95	60.05
124	Springfield-Beckley MPT AGS	27.16	29.66	21.8	26.8	71.74
125	Gen Mitchell IAP ARS	26.84	30.56	20.23	28.83	59.94
126	Des Moines IAP AGS	26.79	32.12	18.7	23.34	76.75
127	Dane County Regional - Truax Field AGS	26.74	30.39	22.59	18.5	61.55
128	Kulis AGS	26.28	36.53	19.38	12.36	8.01
129	Louisville IAP AGS	25.96	34.56	13.33	25.76	78.1
130	Gen Mitchell IAP AGS	25.93	30.56	17.44	31.48	59.38
131	Hector IAP AGS	25.57	29.32	19.22	22.75	72.6
132	Great Falls IAP AGS	25.48	28.14	17.92	35.35	62.23
133	F. S. Gabreski APT AGS	25.28	31.8	20.01	16.07	29.52
134	Cheyenne APT AGS	25.2	32.14	11.54	39.11	68.7
135	Fort Wayne IAP AGS	25.12	31.09	17.21	16.99	79.17
136	Niagara Falls IAP ARS	25.07	25.77	19.09	39.09	55.66
137	Youngstown-Warren Regional APT ARS	24.84	27.24	17.68	31.21	73.97
138	Quonset State APT AGS	24.32	28.94	16.98	29.47	40.59
139	Duluth IAP AGS	23.75	26.13	16.76	31.03	66.75
140	Hanscom AFB	23.06	30.8	17.34	10.54	25.42

Rank	Base	Bomber	Current / Future Mission	Condition of Infrastructure	Contingency, Mobilization, Future Forces	Cost of Ops / Manpower
141	Minn/St Paul IAP ARS	22.84	20.07	21.91	33.25	47.69
142	Mansfield Lahm MAP AGS	22.42	27.42	14.02	21.36	74.01
143	Goodfellow AFB	7.74	0	4.9	36.4	82.66
144	Brooks City-Base	7.61	0	4.9	36.4	77.48
145	Malmstrom AFB	7.24	0	4.9	36.4	62.67
146	Francis E. Warren AFB	6.53	0	4.9	27.41	70.53
147	Schriever AFB	6.15	0	4.9	27.31	55.46
148	Rome Laboratory	5.29	0	4.9	16.8	63.1
149	Air Reserve Personnel Center (ARPC)	5.06	0	4.9	16.8	53.84
150	United States Air Force Academy	4.96	0	4.9	13.92	61.68
151	Cheyenne Mountain AFS	4.61	0	4.9	11.89	55.61
152	Bolling AFB	3.96	0	4.9	9.07	40.62
153	Onizuka AFS	3.46	0	4.9	10.08	16.85
154	Los Angeles AFB	2.82	0	4.9	1.94	23.81

Rank	Base	C2ISR	Current / Future Mission	Condition of Infrastructure	Contingency, Mobilization, Future Forces	Cost of Ops / Manpower
1	Hill AFB	93.97	97.61	93.27	84.05	77.82
2	Mountain Home AFB	91.75	93.03	94.66	79.68	68.58
3	Tinker AFB	89.52	83.36	99.4	77.69	85.8
4	Altus AFB	88.64	83.09	95.63	87.1	80.99
5	Ellsworth AFB	87.72	83.24	96.01	75.59	81.32
6	Whiteman AFB	87.7	82.23	96.07	81.35	74.42
7	Beale AFB	87.67	86.77	95.17	71.86	42.78
8	Barksdale AFB	87.27	77.72	95.85	97.16	80.79
9	Edwards AFB	86.93	86.31	93.71	73.17	40.87
10	Holloman AFB	86.87	84.74	94.94	66.09	75.23
11	Little Rock AFB	86.18	79.83	95.18	77.58	88.12
12	Fairchild AFB	85.25	77.08	96.7	78.07	73.99
13	Dyess AFB	85.14	79.39	95.56	70.23	77.64
14	Davis-Monthan AFB	84.67	83.94	92.46	58.85	71.89
15	Nellis AFB	83.75	94.8	81.11	53.78	43.94
16	Robins AFB	82.86	69.68	98.89	75.82	87.45
17	Wright-Patterson AFB	82.05	73.21	95.38	69.42	74.09
18	March ARB	81.72	84.15	95.25	23.42	45.41
19	McConnell AFB	81.48	84.92	85.63	49.84	75.83
20	Travis AFB	80.74	83.75	90.96	38.5	24.22
21	Seymour Johnson AFB	80.64	67.71	94.93	79.58	85.03
22	Peterson AFB	80.62	95	76.46	36.43	61.91
23	Grissom ARB	79.93	76.34	90	56.25	73.25
24	Charleston AFB	79.27	66.72	91.68	86.43	75.49
25	Kirtland AFB	79.11	89.88	70.96	65.83	69.56
26	Eglin AFB	78.52	67.86	84.43	100	90.39
27	Minot AFB	77.04	67.25	90.27	67.96	73.42
28	Grand Forks AFB	76.33	65.78	90.05	67.17	79.09
29	MacDill AFB	75.34	60.88	89	84.9	76.56
30	Sheppard AFB	75.08	81.6	75.02	44.12	80.04
31	Columbus AFB	75.05	75.42	76.68	61.69	94.97
32	Forbes Field AGS	74.73	83.53	73.31	39.61	77.32
33	Andrews AFB	74.6	65.94	89.02	62.92	41.74
34	McChord AFB	73.97	73.5	82.89	43.34	57.08
35	Luke AFB	73.72	87.55	66.74	40.3	68.92
36	Boise Air Terminal AGS	72.76	90.64	59.88	42.6	78.4
37	Hurlburt Field	72.12	68.6	80.29	50.6	87.18
38	Dover AFB	71.92	63.88	88.84	40.51	64.93
39	Moody AFB	71.61	66.63	73.94	79.89	91.37
40	Offutt AFB	71.16	81.84	64.48	49.23	73.2
41	Langley AFB	71.05	66.39	76	70.37	77.2
42	Salt Lake City IAP AGS	70.64	97.96	50.36	28.94	71.72
43	Tucson IAP AGS	70.37	83.77	63.43	36.99	72.7
44	Homestead ARS	70.3	57.88	90.89	46.23	53.65
45	Eielson AFB	69.62	47.42	94.88	80.18	16.54
46	Westover ARB	69.46	60.24	81.93	65.22	49.23
47	Shaw AFB	69.2	69.28	66.97	74	85.64

Rank	Base	C2ISR	Current / Future Mission	Condition of Infrastructure	Contingency, Mobilization, Future Forces	Cost of Ops / Manpower
48	Randolph AFB	68.96	70.53	70.16	54.4	78.51
49	Buckley AFB	68.94	94.91	45.39	51.03	53.78
50	Scott AFB	67.77	79.82	62.28	38.49	53.95
51	Channel Islands AGS	67.65	81.65	63.65	30.97	23.21
52	Carswell ARS, NAS Fort Worth Joint Reserve	67.4	80.36	62.58	26.4	72.7
53	Lackland AFB	67.2	70.16	64.57	61.71	78.33
54	Andersen AFB	66.86	45.89	94.5	65.33	0
55	Rickenbacker IAP AGS	66.58	71.89	70.92	23.04	71.11
56	Elmendorf AFB	66.24	42.33	91.66	85.13	8.86
57	Phoenix Sky Harbor IAP AGS	65.31	87.46	50.17	25.54	68.42
58	Reno-Tahoe IAP AGS	65.22	89.62	48.36	27.25	47.47
59	Pope AFB	65.21	67.86	65.79	45.41	86.08
60	Stewart IAP AGS	64.52	60.65	79.15	36.82	3.65
61	Vance AFB	64.47	84.79	48.6	31.13	87.75
62	McGee Tyson APT AGS	64.42	75.33	58.62	32.94	86.02
63	Memphis IAP AGS	64.38	78.48	55.82	32.24	75.57
64	Lincoln MAP AGS	63.76	82.19	50.53	32.04	71.2
65	Selfridge ANGB	63.74	68.25	64.79	43.89	42.51
66	Pittsburgh IAP AGS	63.72	68.32	66.22	30.76	69.3
67	Key Field AGS	63.66	73.38	56.96	43.78	75.4
68	Moffett Federal Field AGS	63.52	82.38	56.99	15.94	15.79
69	Tyndall AFB	63.4	67.02	55.87	71.06	90.98
70	McGuire AFB	63.36	56.4	72.72	63.08	37.26
71	Portland IAP AGS	62.84	76.93	53.84	36.08	60.13
72	W. K. Kellogg APT AGS	62.74	70.89	59.43	39.11	62.57
73	Will Rogers World APT AGS	62.66	83.38	43.96	39.49	84.8
74	Joe Foss Field AGS	62.64	77.82	50.71	38.45	77.92
75	Ellington Field AGS	62.34	69.97	56.17	53.12	61.2
76	Laughlin AFB	61.57	70.38	49.05	67.39	84.09
77	Tulsa IAP AGS	61.51	82.77	44.64	28.8	81.03
78	Cannon AFB	61.46	80.34	43.36	46.67	73.61
79	Hickam AFB	60.91	42.64	84.17	63.41	1.12
80	Indian Springs AFS	60.79	94.82	28	44.52	43.94
80	Great Falls IAP AGS	60.79	78.79	46.48	37.01	62.23
82	Birmingham IAP AGS	60.7	73.71	51.02	36.72	77.96
83	Maxwell AFB	60.61	71.98	53.91	29.9	85.68
84	Youngstown-Warren Regional APT ARS	60.35	69.89	56.27	29.97	73.97
85	Sioux Gateway APT AGS	60.23	79.87	42.42	38.85	79.98
86	Nashville IAP AGS	60.09	75.81	47.17	36.67	78.64
87	Rosecrans Memorial APT AGS	59.74	82.26	38.21	40.03	81.65
88	Pittsburgh IAP ARS	59.59	70.35	53.88	31.34	69.59
89	Dobbins ARB	59.01	74.36	49.7	24.83	67.58
90	Greater Peoria Regional APT AGS	59	76.58	44.8	38.2	54.24
91	Vandenberg AFB	58.79	81.43	34.3	62.91	32.48
92	Fort Smith Regional APT AGS	58.75	81.53	37.01	36.66	88.84
93	Cheyenne APT AGS	58.54	91.52	25.59	40.99	68.7
94	Charlotte/Douglas IAP AGS	58.36	69.99	53.82	17.81	81.48

Rank	Base	C2ISR	Current / Future Mission	Condition of Infrastructure	Contingency, Mobilization, Future Forces	Cost of Ops / Manpower
95	Des Moines IAP AGS	58.26	79.13	41	29.17	76.75
96	Pease International Trade Port AGS	57.86	55.51	67.02	36.68	33.8
97	Louisville IAP AGS	57.84	75.56	44.66	26.02	78.1
98	Toledo Express APT AGS	57.76	70.74	46.77	39.94	72.76
99	Fort Wayne IAP AGS	57.57	73.08	48.13	20.01	79.17
100	Otis AGB	57.17	56.11	59.43	56.46	42.04
101	Jackson IAP AGS	57.06	74.28	41.23	36.56	84.66
102	McEntire AGS	56.98	68.69	46.53	39.41	85.19
103	Gen Mitchell IAP AGS	56.4	71.35	45.92	30.43	59.38
104	Gen Mitchell IAP ARS	56.06	73.38	43.59	27.24	59.94
105	Minn/St Paul IAP ARS	55.99	54.77	63.53	32.5	47.69
106	Capital APT AGS	55.95	77.59	37.25	33.67	57.09
107	Hulman Regional APT AGS	55.94	76.18	40.95	18.48	82.24
108	Savannah IAP AGS	55.75	66.62	47.65	32.08	84.65
109	Harrisburg IAP AGS	55.72	64.81	54.24	16.64	69.5
110	Lambert - St. Louis IAP AGS	55.1	69.6	47.53	18.7	59.7
111	Klamath Falls IAP AGS	54.87	85.74	25.83	29.79	69.01
112	NAS New Orleans ARS	54.47	70.66	42.67	24.37	72.63
113	Hector IAP AGS	54.39	69.11	42.86	29.85	72.6
114	Dane County Regional - Truax Field AGS	53.83	71.86	40.97	22.28	61.55
115	Jacksonville IAP AGS	53.81	64.32	44.58	37.69	77.87
116	Mansfield Lahm MAP AGS	53.8	70.59	40.01	28.84	74.01
117	Niagara Falls IAP ARS	52.69	65.58	41.71	38.22	55.66
118	Bangor IAP AGS	52.05	52.28	51.39	50.75	63.61
119	Richmond IAP AGS	51.81	67.71	40.87	18.23	75.18
120	Bradley IAP AGS	51.78	58.63	52.53	19.31	43.06
121	Fresno Air Terminal AGS	51.51	86.89	21.92	12.7	46.99
122	Willow Grove ARS, NAS Willow Grove Joint Reserve	47.95	64.84	37.04	17.64	39.74
123	Dannelly Field AGS	46.99	71.89	21.45	28.84	85.51
124	Springfield-Beckley MPT AGS	46.86	72.83	21.39	26.91	71.74
125	Burlington IAP AGS	46.63	56.72	38.46	31.49	57.07
126	Yeager APT AGS	46.36	71.09	21.41	27.38	81.12
127	Patrick AFB	46.28	60.98	27.36	52.11	66.83
128	Barnes MPT AGS	46.06	58.5	36.09	29.87	47.17
129	Kulis AGS	45.79	47.22	53.55	16.45	8.01
130	Arnold AFS	45.77	75.13	6.75	61.72	89.61
131	Quonset State APT AGS	45.72	57.24	37.48	28.26	40.59
132	Duluth IAP AGS	44.87	64.43	24.45	34.1	66.75
133	Ewvra Sheppard AGS	44.52	66.82	21.47	30.43	73.39
134	Hancock Field AGS	43.8	60.95	21.43	52.13	66.32
135	New Castle County Airport AGS	43.48	63.78	26.35	20.11	47.53
136	Keesler AFB	41.66	69.75	10.14	32.29	85.3
137	Atlantic City IAP AGS	41.04	39.48	42.98	40.1	41.33
138	Luis Munoz Marin IAP AGS	39.18	40.81	44.68	15.24	14.06
139	F. S. Gabreski APT AGS	38.91	59.43	21.49	19.07	29.52
140	Hanscom AFB	37.8	56.5	23.35	14.82	25.42

Rank	Base	C2ISR	Current / Future Mission	Condition of Infrastructure	Contingency, Mobilization, Future Forces	Cost of Ops / Manpower
141	Martin State APT AGS	36.39	65.15	6.84	21.08	58.71
142	Schenectady County APT AGS	34.25	59.13	6.59	28.2	60.05
143	Goodfellow AFB	8.35	0	5	42	82.66
144	Brooks City-Base	8.22	0	5	42	77.48
145	Malmstrom AFB	7.85	0	5	42	62.67
146	Francis E. Warren AFB	7.21	0	5	33.74	70.53
147	Schriever AFB	6.58	0	5	31.07	55.46
148	Rome Laboratory	6.06	0	5	24	63.1
149	Air Reserve Personnel Center (ARPC)	5.83	0	5	24	53.84
150	United States Air Force Academy	5.5	0	5	18.79	61.68
151	Cheyenne Mountain AFS	5.16	0	5	16.93	55.61
152	Bolling AFB	4.4	0	5	12.96	40.62
153	Onizuka AFS	3.94	0	5	14.4	16.85
154	Los Angeles AFB	2.96	0	5	2.77	23.81

Rank	Base	Tanker	Current / Future Mission	Condition of Infrastructure	Contingency, Mobilization, Future Forces	Cost of Ops / Manpower
1	Hill AFB	88.93	99.52	80.45	78.08	77.82
2	Mountain Home AFB	86.64	92.21	84	76.49	68.58
3	Barksdale AFB	84.14	72.18	94.69	96.22	80.79
4	Tinker AFB	84.08	80.89	88.58	79.63	85.8
5	Ellsworth AFB	83.73	79.4	91.15	73.51	81.32
6	Altus AFB	83.4	80.54	85.88	86.92	80.99
7	Whiteman AFB	81.45	78.08	86.09	79.37	74.42
8	Edwards AFB	81.12	84.75	82.92	67.02	40.87
9	Little Rock AFB	79.98	76.28	85.52	72.03	88.12
10	Beale AFB	79.37	84.02	80.76	61.31	42.78
11	Davis-Monthan AFB	79.05	80.31	84.66	51.76	71.89
12	Dyess AFB	78.56	74.37	86.18	66.52	77.64
13	Holloman AFB	78.13	81.36	80.08	55.87	75.23
14	Nellis AFB	77.7	94.53	66.4	55.55	43.94
15	McConnell AFB	77.69	82.94	81.22	39.27	75.83
16	March ARB	77.38	81.93	85.82	29.27	45.41
17	Fairchild AFB	77.09	72.66	82.72	74.88	73.99
18	Robins AFB	75.6	63	89.98	70.89	87.45
19	Eglin AFB	75.28	60.95	84.29	100	90.39
20	Peterson AFB	75.05	93.46	64.75	36.44	61.91
21	Travis AFB	74.99	81.4	79.81	38.16	24.22
22	Kirtland AFB	74.73	89.43	62.56	58.87	69.56
23	Wright-Patterson AFB	71.83	67.62	76.85	69.8	74.09
24	Salt Lake City IAP AGS	71.78	99.99	51.62	25.67	71.72
25	Seymour Johnson AFB	71.7	59.11	84.52	72.95	85.03
26	Charleston AFB	70.87	59.14	81.06	81.35	75.49
27	Boise Air Terminal AGS	70.84	90.42	56.46	38.64	78.4
28	Luke AFB	69.18	86.37	57.31	39.54	68.92
29	McChord AFB	69.09	68	77.48	42.3	57.08
30	Columbus AFB	68.31	70.51	67.62	54.48	94.97
31	Grissom ARB	68.23	69.06	70.93	51.91	73.25
32	Andrews AFB	68	58.11	81.68	63.29	41.74
33	Sheppard AFB	67.4	78.6	61.59	36.82	80.04
34	Offutt AFB	66.72	77.57	59.64	44.57	73.2
35	Forbes Field AGS	66.07	79.78	57.88	34.24	77.32
36	MacDill AFB	65.67	51.49	77.47	79.24	76.56
37	Phoenix Sky Harbor IAP AGS	65.27	86.26	50.26	30.23	68.42
38	Scott AFB	65.12	74.93	61.26	38.75	53.95
39	Randolph AFB	64.12	64.12	66.76	49.53	78.51
40	Grand Forks AFB	63.52	56.57	71.92	56.7	79.09
41	Langley AFB	63.03	57.36	65.58	74.88	77.2
42	Pope AFB	62.76	60.63	68.47	42.95	86.08
43	Minot AFB	62.74	58.49	66.86	62.42	73.42
44	Dover AFB	62.73	55.42	75.22	44.02	64.93
45	Buckley AFB	62.71	93.34	32.62	48.89	53.78
46	Reno-Tahoe IAP AGS	61.85	89.09	40.95	26.94	47.47
47	Lincoln MAP AGS	61.82	78.42	51.82	24.57	71.2

Rank	Base	Tanker	Current / Future Mission	Condition of Infrastructure	Contingency, Mobilization, Future Forces	Cost of Ops / Manpower
48	Rickenbacker IAP AGS	61.4	65.89	65.91	19.6	71.11
49	Tucson IAP AGS	60.48	80.11	45.15	30.67	72.7
50	Hurlburt Field	60.43	61.59	61.23	45.12	87.18
51	Will Rogers World APT AGS	60.37	80.92	42.56	33.68	84.8
52	Memphis IAP AGS	59.92	74.51	49.58	31.81	75.57
53	Westover ARB	59.47	48.01	70.56	68.84	49.23
54	Tulsa IAP AGS	58.73	80.13	42.97	20.12	81.03
55	Indian Springs AFS	58.33	94.54	25.27	32.54	43.94
56	Lackland AFB	58.3	63.64	51.42	57.33	78.33
57	Selfridge ANGB	58.24	61.13	59.15	45.09	42.51
58	Vance AFB	58.04	82.76	37.28	23.09	87.75
59	Eielson AFB	57.97	32.56	85.07	72.75	16.54
60	Carswell ARS, NAS Fort Worth Joint Reserve	57.81	74.31	46.62	24.62	72.7
61	McGuire AFB	57.57	48.27	68.82	58.82	37.26
62	Homestead ARS	57.34	44.92	75.28	40.97	53.65
63	Birmingham IAP AGS	57.3	68.27	48.57	37.93	77.96
64	Elmendorf AFB	56.87	28.53	85.7	79.56	8.86
65	Channel Islands AGS	56.85	78.66	41.23	29.84	23.21
66	Cheyenne APT AGS	56.81	91.56	22.36	36.87	68.7
67	Sioux Gateway APT AGS	56.36	75	39.74	33.71	79.98
68	Cannon AFB	56.18	78.23	33.6	44.1	73.61
69	Rosecrans Memorial APT AGS	55.88	78.12	34.56	35.55	81.65
70	Great Falls IAP AGS	55.65	74.92	39.74	31.4	62.23
71	Portland IAP AGS	55.44	72.49	40.93	35.96	60.13
72	Tyndall AFB	55.38	59.52	47.49	60.22	90.98
73	Joe Foss Field AGS	55.36	72.32	40.66	32.71	77.92
74	McGee Tyson APT AGS	55.32	67.74	45.4	31.72	86.02
75	Laughlin AFB	55.16	63.93	43.69	55.16	84.09
76	Fort Smith Regional APT AGS	55.12	78.51	33.69	28.06	88.84
77	Shaw AFB	55.08	61.15	43.7	66.66	85.64
78	Andersen AFB	54.84	29.24	83.17	68.66	0
79	Louisville IAP AGS	54.72	70.69	43	24	78.1
80	Pittsburgh IAP AGS	54.44	61.23	51.76	30.56	69.3
81	Vandenberg AFB	54.38	77.04	30.06	56.57	32.48
82	Pittsburgh IAP ARS	54.31	61.23	51.25	31.29	69.59
83	Nashville IAP AGS	54.26	71.02	39.82	30.93	78.64
84	Dobbins ARB	54.14	66.47	47.28	22.46	67.58
85	Moody AFB	54.03	59.01	41.86	72.35	91.37
86	Gen Mitchell IAP AGS	54	65.19	47.02	30.15	59.38
87	Hickam AFB	53.88	27.64	82.88	67.43	1.12
88	Greater Peoria Regional APT AGS	53.49	72.03	38.78	29.13	54.24
89	Moffett Federal Field AGS	53.24	79.61	36.78	9.71	15.79
90	Jackson IAP AGS	53.23	69.01	39.25	30.78	84.66
91	Des Moines IAP AGS	53.07	74.03	36.32	20.3	76.75
92	Key Field AGS	52.83	67.84	38.01	39.62	75.4
93	Klamath Falls IAP AGS	52.43	82.68	25.73	19.92	69.01
93	Maxwell AFB	52.43	66.01	43.23	19.87	85.68

Rank	Base	Tanker	Current / Future Mission	Condition of Infrastructure	Contingency, Mobilization, Future Forces	Cost of Ops / Manpower
93	Fort Wayne IAP AGS	52.43	67.45	43.01	15.69	79.17
96	Toledo Express APT AGS	51.84	64.39	39.9	38.4	72.76
96	Capital APT AGS	51.84	73.35	33.93	25.93	57.09
98	Lambert - St. Louis IAP AGS	51.61	65.57	44.73	14.02	59.7
99	Hulman Regional APT AGS	51.48	71.51	36.24	14.88	82.24
100	Fresno Air Terminal AGS	51.39	85.52	23.31	12.05	46.99
101	Minn/St Paul IAP ARS	51.23	48.72	58.78	32.4	47.69
102	W. K. Kellogg APT AGS	50.93	64.59	38.12	38.4	62.57
103	Ellington Field AGS	50.71	63.39	36.23	49.75	61.2
104	Stewart IAP AGS	50.69	51.2	56.08	37.76	3.65
105	Pease International Trade Port AGS	50.62	44.47	62.12	35.33	33.8
106	Dane County Regional - Truax Field AGS	50.41	65.86	40.65	16.99	61.55
107	Harrisburg IAP AGS	50.31	56.64	51.56	11.19	69.5
108	Gen Mitchell IAP ARS	49.94	65.19	37.98	26.93	59.94
109	McEntire AGS	48.51	61.71	36.33	29.05	85.19
110	Charlotte/Douglas IAP AGS	48.25	63.42	38.04	12.47	81.48
111	Jacksonville IAP AGS	48.21	56	42.9	27.04	77.87
112	Mansfield Lahm MAP AGS	48.06	64.19	35.32	20.17	74.01
113	Youngstown-Warren Regional APT ARS	47.72	60.63	36.35	28.94	73.97
114	NAS New Orleans ARS	47.42	61.63	38.25	13.82	72.63
115	Savannah IAP AGS	47.07	59	36.99	24.63	84.65
116	Hector IAP AGS	46.78	59.6	37.43	20.05	72.6
117	Richmond IAP AGS	45.32	59.11	36.18	12.44	75.18
118	Springfield-Beckley MPT AGS	44.7	67.12	23.06	24.55	71.74
119	Niagara Falls IAP ARS	44.63	54.98	33.64	39.93	55.66
120	Dannelly Field AGS	44.06	65.89	23.12	20.17	85.51
121	Otis AGB	43.12	45.26	39.11	50.17	42.04
122	Keesler AFB	43.02	63.09	22.6	24.86	85.3
123	Bangor IAP AGS	42.68	40.25	42.64	48.67	63.61
124	Ewvra Sheppard AGS	42.59	59.27	27.36	21.46	73.39
125	Arnold AFS	42.15	70.13	7	47.37	89.61
126	Patrick AFB	41.56	50.29	28.31	50.05	66.83
127	New Castle County Airport AGS	41.41	55.29	32.16	14.43	47.53
128	Burlington IAP AGS	41.2	46.06	39.08	23.55	57.07
129	Yeager APT AGS	41.01	64.84	15.79	25.96	81.12
130	Willow Grove ARS, NAS Willow Grove Joint Reserve	40.94	54.02	33.48	12.05	39.74
131	Bradley IAP AGS	40.49	48.55	37.4	15.61	43.06
132	Duluth IAP AGS	40.43	56.14	24.58	27.4	66.75
133	Hancock Field AGS	39.44	51.58	23.11	44.63	66.32
134	Quonset State APT AGS	39.4	46.74	34.19	27.04	40.59
135	Barnes MPT AGS	39.35	48.39	31.9	26.65	47.17
136	Kulis AGS	36.28	33.64	46.74	12.09	8.01
137	F. S. Gabreski APT AGS	34.63	49.6	23.18	14.5	29.52
138	Schenectady County APT AGS	34.42	49.21	18.36	26.56	60.05
139	Martin State APT AGS	32.26	57.08	7.1	15.79	58.71
140	Hanscom AFB	32.23	45.77	23.36	8.47	25.42

Rank	Base	Tanker	Current / Future Mission	Condition of Infrastructure	Contingency, Mobilization, Future Forces	Cost of Ops / Manpower
141	Luis Munoz Marin IAP AGS	30.75	25.25	43.01	9.27	14.06
142	Atlantic City IAP AGS	30.34	23.51	36.93	31.71	41.33
143	Goodfellow AFB	7.08	0	5	29.25	82.66
144	Brooks City-Base	6.95	0	5	29.25	77.48
145	Malmstrom AFB	6.58	0	5	29.25	62.67
146	Francis E. Warren AFB	6.04	0	5	22.03	70.53
147	Schriever AFB	5.66	0	5	21.94	55.46
148	Rome Laboratory	5.01	0	5	13.51	63.1
149	Air Reserve Personnel Center (ARPC)	4.78	0	5	13.51	53.84
150	United States Air Force Academy	4.74	0	5	11.19	61.68
151	Cheyenne Mountain AFS	4.43	0	5	9.56	55.61
152	Bolling AFB	3.83	0	5	7.29	40.62
153	Onizuka AFS	3.31	0	5	8.11	16.85
154	Los Angeles AFB	2.84	0	5	1.56	23.81

Rank	Base	Space	Current / Future Mission	Condition of Infrastructure	Contingency, Mobilization, Future Forces	Cost of Ops / Manpower
1	Schriever AFB	96.54	100	100	76.52	55.46
2	Vandenberg AFB	90.49	83	100	100	32.48
3	Beale AFB	86.96	74.76	100	100	42.78
4	Buckley AFB	84.96	72.24	100	88.9	53.78
5	Moody AFB	84.37	66.5	100	100	91.37
6	Tyndall AFB	84.36	66.5	100	100	90.98
7	Eglin AFB	84.35	66.5	100	100	90.39
8	Arnold AFS	84.33	66.5	100	100	89.61
9	Laughlin AFB	84.19	66.5	100	100	84.09
10	Ellsworth AFB	84.12	66.5	100	100	81.32
11	Barksdale AFB	84.01	66.5	100	99.03	80.79
12	Charleston AFB	83.98	66.5	100	100	75.49
13	Minot AFB	83.93	66.5	100	100	73.42
14	Mountain Home AFB	83.8	66.5	100	100	68.58
15	Malmstrom AFB	83.66	66.5	100	100	62.67
16	Little Rock AFB	82.99	66.5	100	86.97	88.12
17	Kirtland AFB	82.93	66.5	100	91	69.56
18	Grand Forks AFB	82.64	66.5	100	85.72	79.09
19	Eielson AFB	82.5	66.5	100	100	16.54
20	Elmendorf AFB	82.31	66.5	100	100	8.86
21	Holloman AFB	82.04	66.5	100	80.69	75.23
22	Goodfellow AFB	81.95	66.5	94.68	100	82.66
23	McGuire AFB	81.21	63.88	100	94	37.26
24	Francis E. Warren AFB	80.64	66.5	100	67.9	70.53
25	Hurlburt Field	80.19	66.5	100	59.2	87.18
26	Dyess AFB	79.98	66.5	100	59.45	77.64
27	Fairchild AFB	79.8	66.5	98.4	65.24	73.99
28	Offutt AFB	79.31	65.54	100	58.27	73.2
29	Columbus AFB	78.89	66.5	100	44.25	94.97
30	Robins AFB	77.9	54.94	97.44	100	87.45
31	Fort Smith Regional APT AGS	77.76	66.5	98.4	41.1	88.84
32	Nellis AFB	77.45	66.5	100	42.64	43.94
33	Davis-Monthan AFB	77.42	66.5	100	35.31	71.89
34	Sheppard AFB	77.28	66.5	100	31.93	80.04
35	Rome Laboratory	76.67	66.5	100	30	63.1
36	Luke AFB	76.46	66.5	100	26.48	68.92
37	Andersen AFB	76.39	66.5	100	43.03	0
38	Travis AFB	75.79	66.5	100	30.89	24.22
39	Shaw AFB	71.7	66.5	69.8	100	85.64
40	Hill AFB	70.93	38	100	100	77.82
41	Indian Springs AFS	67.24	66.5	73.79	49.31	43.94
42	Cannon AFB	66.56	66.5	74.56	31.93	73.61
43	Edwards AFB	65.84	30.26	100	94	40.87
44	Peterson AFB	63.95	66.5	71.6	21	61.91
45	Otis AGB	63.83	60.32	63.2	88	42.04
46	Brooks City-Base	61.03	16.5	100	100	77.48
47	Wright-Patterson AFB	58.78	16.5	100	78.39	74.09

Rank	Base	Space	Current / Future Mission	Condition of Infrastructure	Contingency, Mobilization, Future Forces	Cost of Ops / Manpower
48	Scott AFB	58.1	66.5	56.14	28.62	53.95
49	Seymour Johnson AFB	56.51	66.5	35.16	92.03	85.03
50	Hancock Field AGS	55.93	57.76	47.57	79.58	66.32
51	Atlantic City IAP AGS	55.53	66.5	36.4	88	41.33
52	Andrews AFB	53.96	16.5	100	38.28	41.74
53	Westover ARB	53.63	42.68	74	20.56	49.23
54	W. K. Kellogg APT AGS	53.29	66.5	42.4	35.38	62.57
55	McGee Tyson APT AGS	53.26	100	6.4	24.47	86.02
56	Grissom ARB	52.66	66.5	38.68	41.88	73.25
57	McConnell AFB	51.76	66.5	32	59.93	75.83
58	Whiteman AFB	50.56	66.5	28.92	61.14	74.42
59	Patrick AFB	49.37	83	13.5	39.2	66.83
60	Yeager APT AGS	48.7	66.5	34.4	18	81.12
61	Pease International Trade Port AGS	47.03	66.5	28.8	36.35	33.8
62	Greater Peoria Regional APT AGS	46.03	66.5	23.77	42.19	54.24
63	MacDill AFB	45.34	21.44	56.8	100	76.56
64	McEntire AGS	45.31	66.5	21.6	36.28	85.19
65	Pope AFB	45.3	66.5	23.04	30	86.08
66	Channel Islands AGS	44.22	66.5	26.4	20.9	23.21
67	McChord AFB	43.9	66.5	20	35.8	57.08
68	Boise Air Terminal AGS	43.37	66.5	18.02	33.38	78.4
69	Kulis AGS	42.62	66.5	24.61	16.2	8.01
70	Bangor IAP AGS	40.33	66.5	12.4	30	63.61
71	United States Air Force Academy	40.15	66.5	12.4	28.72	61.68
72	Altus AFB	39.82	66.5	2	63.8	80.99
73	Joe Foss Field AGS	39.59	66.5	9.16	32.51	77.92
74	Vance AFB	39.47	66.5	8.76	30.48	87.75
75	Capital APT AGS	39.12	66.5	8.6	35.31	57.09
76	Savannah IAP AGS	38.52	63.54	10.06	30	84.65
77	Hector IAP AGS	38.37	66.5	4.91	39.17	72.6
78	Tucson IAP AGS	38.33	66.5	6.32	33.02	72.7
79	Randolph AFB	38.25	16.5	56	54.62	78.51
80	Harrisburg IAP AGS	37.91	66.5	9.12	18	69.5
81	Forbes Field AGS	37.88	66.5	5.6	30.38	77.32
82	Stewart IAP AGS	37.38	66.5	9.6	27.17	3.65
83	Dover AFB	37.33	66.5	8	18	64.93
84	Lackland AFB	37.23	16.5	52.09	60.56	78.33
85	March ARB	37.22	66.5	11.12	8.77	45.41
86	Keesler AFB	37.19	66.5	3.55	30	85.3
87	Schenectady County APT AGS	37.17	66.5	7.12	21.28	60.05
88	Klamath Falls IAP AGS	37.15	66.5	4.4	30	69.01
89	Youngstown-Warren Regional APT ARS	37.07	66.5	5.73	22.49	73.97
90	Duluth IAP AGS	37.02	66.5	4.24	30	66.75
91	NAS New Orleans ARS	36.9	66.5	3.6	30	72.63
92	Maxwell AFB	36.78	66.5	2.4	30.48	85.68
93	Ewvra Sheppard AGS	36.76	66.5	3.24	30	73.39
94	Great Falls IAP AGS	36.64	66.5	3.6	30	62.23

Rank	Base	Space	Current / Future Mission	Condition of Infrastructure	Contingency, Mobilization, Future Forces	Cost of Ops / Manpower
95	Dannelly Field AGS	36.54	66.5	1.96	30	85.51
96	Key Field AGS	36.53	66.5	2.52	30	75.4
97	Toledo Express APT AGS	36.29	16.5	54	44.72	72.76
98	Sioux Gateway APT AGS	36.26	66.5	1.2	31.69	79.98
99	Fort Wayne IAP AGS	35.89	66.02	3.94	19.04	79.17
100	Jackson IAP AGS	35.71	66.5	0	30	84.66
101	Rosecrans Memorial APT AGS	35.63	66.5	0	30	81.65
102	Mansfield Lahm MAP AGS	35.44	66.5	0	30	74.01
102	Louisville IAP AGS	35.44	66.5	2.64	18	78.1
104	Lincoln MAP AGS	35.37	66.5	0	30	71.2
105	Cheyenne APT AGS	35.31	66.5	0	30	68.7
106	Hulman Regional APT AGS	35.22	66.5	2.28	16.2	82.24
107	Burlington IAP AGS	35.14	66.5	0.3	30	57.07
107	Dane County Regional - Truax Field AGS	35.14	66.5	2.19	21	61.55
109	Cheyenne Mountain AFS	35.13	66.5	2.4	21.48	55.61
110	Fresno Air Terminal AGS	35	66.5	5.79	8.35	46.99
111	Niagara Falls IAP ARS	34.62	66.5	2.02	18.02	55.66
112	Springfield-Beckley MPT AGS	34.48	66.5	0	20.97	71.74
113	Birmingham IAP AGS	33.63	57	7.2	24.66	77.96
114	Reno-Tahoe IAP AGS	33.57	66.5	0.42	16.2	47.47
115	Tinker AFB	33.51	23.36	35.93	57.03	85.8
116	Quonset State APT AGS	33.5	66.5	0	18.97	40.59
117	Langley AFB	33.19	16.5	48.18	36.83	77.2
118	Des Moines IAP AGS	33.18	50.72	11.59	31.15	76.75
119	Phoenix Sky Harbor IAP AGS	33.05	66.5	0	7.52	68.42
120	Luis Munoz Marin IAP AGS	32.74	66.5	0	18	14.06
121	Rickenbacker IAP AGS	28.18	50	3.1	21.14	71.11
122	Hickam AFB	28.01	16.5	41.4	32.08	1.12
123	Barnes MPT AGS	23.61	42.72	1.2	22.83	47.17
124	Onizuka AFS	21.43	41.76	0	18	16.85
125	Selfridge ANGB	21.35	16.5	26.12	18.58	42.51
126	Hanscom AFB	21.1	16.5	26.3	19.64	25.42
127	Homestead ARS	20.62	16.5	19.2	37.24	53.65
128	Will Rogers World APT AGS	20	23.36	9.6	31.45	84.8
129	Ellington Field AGS	19.75	16.5	4.42	88	61.2
129	Martin State APT AGS	19.75	16.5	21.2	18.92	58.71
131	Dobbins ARB	18.05	16.5	16.8	18	67.58
132	Charlotte/Douglas IAP AGS	15.25	16.5	8.63	20.35	81.48
133	Pittsburgh IAP ARS	15.01	16.5	9.17	18.72	69.59
134	Jacksonville IAP AGS	14.96	16.5	5.6	30.97	77.87
135	Richmond IAP AGS	13.74	16.5	4.8	22.83	75.18
136	Tulsa IAP AGS	13.34	17.74	0.37	30	81.03
137	Moffett Federal Field AGS	13.32	16.5	7.6	21.91	15.79
138	Bradley IAP AGS	12.77	16.5	5.44	18.42	43.06
139	Nashville IAP AGS	12.69	16.5	0.32	30	78.64
140	Pittsburgh IAP AGS	12.61	16.5	3.6	18	69.3
141	Portland IAP AGS	12.15	16.5	2.32	21	60.13

Rank	Base	Space	Current / Future Mission	Condition of Infrastructure	Contingency, Mobilization, Future Forces	Cost of Ops / Manpower
142	Salt Lake City IAP AGS	12.13	16.5	1.04	23.17	71.72
143	Air Reserve Personnel Center (ARPC)	11.94	16.5	0	30	53.84
144	Willow Grove ARS, NAS Willow Grove Joint Reserve	11.62	16.5	2.04	21.86	39.74
145	Memphis IAP AGS	11.28	16.5	0	18	75.57
146	New Castle County Airport AGS	11.26	16.5	1.2	19.83	47.53
147	Carswell ARS, NAS Fort Worth Joint Reserve	11.21	16.5	0	18	72.7
148	Gen Mitchell IAP ARS	11.05	16.5	0.83	16.2	59.94
149	Lambert - St. Louis IAP AGS	10.88	16.5	0	18	59.7
150	Gen Mitchell IAP AGS	10.87	16.5	0	18	59.38
151	Minn/St Paul IAP ARS	10.67	16.5	0	18.9	47.69
152	Bolling AFB	10.61	16.5	0.91	16.2	40.62
153	F. S. Gabreski APT AGS	10.46	16.5	0.8	18	29.52
154	Los Angeles AFB	8.54	16.5	0	3.46	23.81

Department : USAF
 Scenario File : O:\IEB Files\BRAC 2005\COBRA Model & Process\COBRA 6.05\S139 COBRA Hulman.CBR
 Option Pkg Name: S139 Close Hulman Regional APT AGS
 Std Fctrs File : O:\IEB Files\BRAC 2005\COBRA Model & Process\COBRA 6.05\BRAC2005.SFF

Starting Year : 2006
 Final Year : 2007
 Payback Year : 2012 (5 Years)

NPV in 2025(\$K): -10,253
 1-Time Cost(\$K): 5,875

Net Costs in 2005 Constant Dollars (\$K)

	2006	2007	2008	2009	2010	2011	Total	Beyond
	----	----	----	----	----	----	----	-----
MilCon	57	629	0	0	0	0	686	0
Person	0	392	11	11	11	11	434	11
Overhd	-386	-982	-1,113	-1,113	-1,113	-1,113	-5,820	-1,113
Moving	650	1,804	0	0	0	0	2,455	0
Missio	0	0	0	0	0	0	0	0
Other	1,383	630	0	0	0	0	2,013	0
TOTAL	1,704	2,473	-1,102	-1,102	-1,102	-1,102	-232	-1,102

	2006	2007	2008	2009	2010	2011	Total
	----	----	----	----	----	----	-----
POSITIONS ELIMINATED							
Off	0	0	0	0	0	0	0
Enl	0	0	0	0	0	0	0
Civ	0	0	0	0	0	0	0
TOT	0	0	0	0	0	0	0
POSITIONS REALIGNED							
Off	0	2	0	0	0	0	2
Enl	0	24	0	0	0	0	24
Stu	0	0	0	0	0	0	0
Civ	0	78	0	0	0	0	78
TOT	0	104	0	0	0	0	104

Summary:

 Close Hulman Regional AGS flight operations and enclave ECS at Hulman.
 15 F-16 B30 move,
 9 F-16s to Ft. Wayne,
 6 F-16 to FFS Retire,
 ECS to remain in place as an enclave.

Department : USAF
 Scenario File : O:\IEB Files\BRAC 2005\COBRA Model & Process\COBRA 6.05\S139 COBRA Hulman.CBR
 Option Pkg Name: S139 Close Hulman Regional APT AGS
 Std Fctrs File : O:\IEB Files\BRAC 2005\COBRA Model & Process\COBRA 6.05\BRAC2005.SFF

Costs in 2005 Constant Dollars (\$K)

	2006	2007	2008	2009	2010	2011	Total	Beyond
	----	----	----	----	----	----	----	-----
MilCon	57	629	0	0	0	0	686	0
Person	0	504	123	123	123	123	997	123
Overhd	162	201	70	70	70	70	643	70
Moving	650	1,851	0	0	0	0	2,501	0
Missio	0	0	0	0	0	0	0	0
Other	1,383	630	0	0	0	0	2,013	0
TOTAL	2,252	3,816	193	193	193	193	6,841	193

Savings in 2005 Constant Dollars (\$K)

	2006	2007	2008	2009	2010	2011	Total	Beyond
	----	----	----	----	----	----	----	-----
MilCon	0	0	0	0	0	0	0	0
Person	0	113	113	113	113	113	563	113
Overhd	548	1,183	1,183	1,183	1,183	1,183	6,464	1,183
Moving	0	47	0	0	0	0	47	0
Missio	0	0	0	0	0	0	0	0
Other	0	0	0	0	0	0	0	0
TOTAL	548	1,342	1,296	1,296	1,296	1,296	7,074	1,296

COBRA PERSONNEL/SF/SUSTAINMENT/RECAP/BOS DELTAS REPORT (COBRA v6.05)

Data As Of 2/2/2005 4:04:03 PM, Report Created 2/9/2005 6:15:53 PM

Department : USAF
 Scenario File : O:\IEB Files\BRAC 2005\COBRA Model & Process\COBRA 6.05\S139\S139 COBRA Hulman.CBR
 Option Pkg Name: S139 Close Hulman Regional APT AGS
 Std Fctrs File : O:\IEB Files\BRAC 2005\COBRA Model & Process\COBRA 6.05\BRAC2005.SFF

Base	Personnel			
	Start*	Finish*	Change	%Change
Hulman Regional APT	200	96	-104	-52%
Fort Wayne IAP AGS	290	394	104	36%
TOTAL	490	490	0	0%

Base	Square Footage				
	Start	Finish	Change	%Change	Chg/Per
Hulman Regional APT	340,000	176,000	-164,000	-48%	1,577
Fort Wayne IAP AGS	362,000	362,800	800	0%	8
TOTAL	702,000	538,800	-163,200	-23%	0

Base	Base Operations Support (2005\$)				
	Start*	Finish*	Change	%Change	Chg/Per
Hulman Regional APT	2,709,893	2,622,693	-87,199	-3%	838
Fort Wayne IAP AGS	1,944,000	2,004,860	60,860	3%	585
TOTAL	4,653,893	4,627,553	-26,340	-1%	0

Base	Sustainment (2005\$)				
	Start	Finish	Change	%Change	Chg/Per
Hulman Regional APT	1,420,000	736,119	-683,881	-48%	6,576
Fort Wayne IAP AGS	1,460,000	1,462,488	2,488	0%	24
TOTAL	2,880,000	2,198,607	-681,392	-24%	0

Base	Recapitalization (2005\$)				
	Start	Finish	Change	%Change	Chg/Per
Hulman Regional APT	852,198	444,601	-407,597	-48%	3,919
Fort Wayne IAP AGS	886,454	888,661	2,207	0%	21
TOTAL	1,738,653	1,333,262	-405,391	-23%	0

Base	Sustain + Recap + BOS (2005\$)				
	Start	Finish	Change	%Change	Chg/Per
Hulman Regional APT	4,982,091	3,803,413	-1,178,678	-24%	11,333
Fort Wayne IAP AGS	4,290,454	4,356,009	65,555	2%	630
TOTAL	9,272,545	8,159,422	-1,113,123	-12%	0

Base	Plant Replacement Value (2005\$)				
	Start	Finish	Change	%Change	Chg/Per

Hulman Regional APT	103,116,000	53,796,694	-49,319,306	-48%	474,224
Fort Wayne IAP AGS	107,261,000	107,528,000	267,000	0%	2,567
-----	-----	-----	-----	-----	-----
TOTAL	210,377,000	161,324,694	-49,052,306	-23%	0

Department : USAF
 Scenario File : O:\IEB Files\BRAC 2005\COBRA Model & Process\COBRA 6.05\S139\S139 COBRA Hulman.CBR
 Option Pkg Name: S139 Close Hulman Regional APT AGS
 Std Fctrs File : O:\IEB Files\BRAC 2005\COBRA Model & Process\COBRA 6.05\BRAC2005.SFF

* "Start" and "Finish" values for Personnel and BOS both include the Programmed Installation Population (non-BRAC) Changes, so that only changes attributable to the BRAC action are reflected in the "Change" columns of this report.

Department : USAF
 Scenario File : O:\IEB Files\BRAC 2005\COBRA Model & Process\COBRA 6.05\S139\S139 COBRA Hulman.CBR
 Option Pkg Name: S139 Close Hulman Regional APT AGS
 Std Fctrs File : O:\IEB Files\BRAC 2005\COBRA Model & Process\COBRA 6.05\BRAC2005.SFF

ONE-TIME COSTS -----(\$K)-----	2006 ----	2007 ----	2008 ----	2009 ----	2010 ----	2011 ----	Total -----
CONSTRUCTION							
MILCON	57	629	0	0	0	0	686
O&M							
CIV SALARY							
Civ RIF	0	287	0	0	0	0	287
Civ Retire	0	72	0	0	0	0	72
CIV MOVING							
Per Diem	0	180	0	0	0	0	180
POV Miles	0	2	0	0	0	0	2
Home Purch	0	452	0	0	0	0	452
HHG	0	105	0	0	0	0	105
Misc	0	59	0	0	0	0	59
House Hunt	0	112	0	0	0	0	112
PPP	0	0	0	0	0	0	0
RITA	0	225	0	0	0	0	225
FREIGHT							
Packing	0	5	0	0	0	0	5
Freight	58	32	0	0	0	0	91
Vehicles	0	0	0	0	0	0	0
Unemployment	0	22	0	0	0	0	22
OTHER							
Info Tech	559	627	0	0	0	0	1,186
Prog Manage	125	94	0	0	0	0	219
Supt Contrac	0	0	0	0	0	0	0
Mothball	37	37	0	0	0	0	74
1-Time Move	33	0	0	0	0	0	33
MIL PERSONNEL							
MIL MOVING							
Per Diem	0	1	0	0	0	0	1
POV Miles	0	1	0	0	0	0	1
HHG	0	22	0	0	0	0	22
Misc	0	26	0	0	0	0	26
OTHER							
Elim PCS	0	0	0	0	0	0	0
OTHER							
HAP / RSE	0	0	0	0	0	0	0
Environmental	581	50	0	0	0	0	631
Misn Contract	0	0	0	0	0	0	0

1-Time Other	802	580	0	0	0	0	1,382
TOTAL ONE-TIME	2,252	3,623	0	0	0	0	5,875

Department : USAF
 Scenario File : O:\IEB Files\BRAC 2005\COBRA Model & Process\COBRA 6.05\S139\S139 COBRA Hulman.CBR
 Option Pkg Name: S139 Close Hulman Regional APT AGS
 Std Fctrs File : O:\IEB Files\BRAC 2005\COBRA Model & Process\COBRA 6.05\BRAC2005.SFF

RECURRINGCOSTS	2006	2007	2008	2009	2010	2011	Total	Beyond
-----(\$K)-----	----	----	----	----	----	----	-----	-----
O&M								
Sustainment	0	3	3	3	3	3	18	3
Recap	0	6	6	6	6	6	28	6
BOS	0	61	61	61	61	61	304	61
Civ Salary	0	0	0	0	0	0	0	0
TRICARE	0	0	0	0	0	0	0	0
MIL PERSONNEL								
Off Salary	0	0	0	0	0	0	0	0
Enl Salary	0	0	0	0	0	0	0	0
House Allow	0	123	123	123	123	123	616	123
OTHER								
Mission Activ	0	0	0	0	0	0	0	0
Misc Recur	0	0	0	0	0	0	0	0
TOTAL RECUR	0	193	193	193	193	193	966	193
TOTAL COST	2,252	3,816	193	193	193	193	6,841	193
ONE-TIME SAVES	2006	2007	2008	2009	2010	2011	Total	
-----(\$K)-----	----	----	----	----	----	----	-----	
CONSTRUCTION								
MILCON	0	0	0	0	0	0	0	
O&M								
1-Time Move	0	0	0	0	0	0	0	
MIL PERSONNEL								
Mil Moving	0	47	0	0	0	0	47	
OTHER								
Environmental	0	0	0	0	0	0	0	
1-Time Other	0	0	0	0	0	0	0	
TOTAL ONE-TIME	0	47	0	0	0	0	47	
RECURRINGSAVES	2006	2007	2008	2009	2010	2011	Total	Beyond
-----(\$K)-----	----	----	----	----	----	----	-----	-----
FAM HOUSE OPS	0	0	0	0	0	0	0	0
O&M								
Sustainment	342	685	685	685	685	685	3,767	685
Recap	205	411	411	411	411	411	2,261	411
BOS	0	87	87	87	87	87	436	87
Civ Salary	0	0	0	0	0	0	0	0
MIL PERSONNEL								
Off Salary	0	0	0	0	0	0	0	0
Enl Salary	0	0	0	0	0	0	0	0
House Allow	0	113	113	113	113	113	563	113
OTHER								
Procurement	0	0	0	0	0	0	0	0
Mission Activ	0	0	0	0	0	0	0	0
Misc Recur	0	0	0	0	0	0	0	0
TOTAL RECUR	548	1,296	1,296	1,296	1,296	1,296	7,027	1,296
TOTAL SAVINGS	548	1,342	1,296	1,296	1,296	1,296	7,074	1,296

Department : USAF
 Scenario File : O:\IEB Files\BRAC 2005\COBRA Model & Process\COBRA 6.05\S139\S139 COBRA Hulman.CBR
 Option Pkg Name: S139 Close Hulman Regional APT AGS
 Std Fctrs File : O:\IEB Files\BRAC 2005\COBRA Model & Process\COBRA 6.05\BRAC2005.SFF

ONE-TIME NET	2006	2007	2008	2009	2010	2011	Total	
-----(\$K)-----	----	----	----	----	----	----	-----	
CONSTRUCTION								
MILCON	57	629	0	0	0	0	686	
O&M								
Civ Retir/RIF	0	359	0	0	0	0	359	
Civ Moving	58	1,173	0	0	0	0	1,232	
Info Tech	559	627	0	0	0	0	1,186	
Other	195	153	0	0	0	0	348	
MIL PERSONNEL								
Mil Moving	0	4	0	0	0	0	4	
OTHER								
HAP / RSE	0	0	0	0	0	0	0	
Environmental	581	50	0	0	0	0	631	
Misn Contract	0	0	0	0	0	0	0	
1-Time Other	802	580	0	0	0	0	1,382	
TOTAL ONE-TIME	2,252	3,576	0	0	0	0	5,197	
RECURRING NET								
-----(\$K)-----	----	----	----	----	----	----	-----	-----
FAM HOUSE OPS	0	0	0	0	0	0	0	0
O&M								
Sustainment	-342	-681	-681	-681	-681	-681	-3,749	-681
Recap	-205	-405	-405	-405	-405	-405	-2,232	-405
BOS	0	-26	-26	-26	-26	-26	-132	-26
Civ Salary	0	0	0	0	0	0	0	0
TRICARE	0	0	0	0	0	0	0	0
MIL PERSONNEL								
Mil Salary	0	0	0	0	0	0	0	0
House Allow	0	11	11	11	11	11	53	11
OTHER								
Procurement	0	0	0	0	0	0	0	0
Mission Activ	0	0	0	0	0	0	0	0
Misc Recur	0	0	0	0	0	0	0	0
TOTAL RECUR	-548	-1,102	-1,102	-1,102	-1,102	-1,102	-6,060	-1,102
TOTAL NET COST	1,704	2,473	-1,102	-1,102	-1,102	-1,102	-232	-1,102

Department : USAF
 Scenario File : O:\IEB Files\BRAC 2005\COBRA Model & Process\COBRA 6.05\S139\S139 COBRA Hulman.CBR
 Option Pkg Name: S139 Close Hulman Regional APT AGS
 Std Fctrs File : O:\IEB Files\BRAC 2005\COBRA Model & Process\COBRA 6.05\BRAC2005.SFF

Base: Hulman Regional APT, IN (LDXF)	2006	2007	2008	2009	2010	2011	Total
ONE-TIME COSTS	2006	2007	2008	2009	2010	2011	Total
-----(\$K)-----	----	----	----	----	----	----	-----
CONSTRUCTION							
MILCON	34	384	0	0	0	0	419
O&M							
CIV SALARY							
Civ RIFs	0	287	0	0	0	0	287
Civ Retire	0	72	0	0	0	0	72
CIV MOVING							
Per Diem	0	180	0	0	0	0	180
POV Miles	0	2	0	0	0	0	2
Home Purch	0	452	0	0	0	0	452
HHG	0	105	0	0	0	0	105
Misc	0	59	0	0	0	0	59
House Hunt	0	112	0	0	0	0	112
PPP	0	0	0	0	0	0	0
RITA	0	225	0	0	0	0	225
FREIGHT							
Packing	0	5	0	0	0	0	5
Freight	58	32	0	0	0	0	91
Vehicles	0	0	0	0	0	0	0
Unemployment	0	22	0	0	0	0	22
OTHER							
Info Tech	0	17	0	0	0	0	17
Prog Manage	125	94	0	0	0	0	219
Supt Contract	0	0	0	0	0	0	0
Mothball	37	37	0	0	0	0	74
1-Time Move	33	0	0	0	0	0	33
MIL PERSONNEL							
MIL MOVING							
Per Diem	0	1	0	0	0	0	1
POV Miles	0	1	0	0	0	0	1
HHG	0	22	0	0	0	0	22
Misc	0	26	0	0	0	0	26
OTHER							
Elim PCS	0	0	0	0	0	0	0
OTHER							
HAP / RSE	0	0	0	0	0	0	0
Environmental	300	0	0	0	0	0	300
Misn Contract	0	0	0	0	0	0	0
1-Time Other	0	580	0	0	0	0	580
TOTAL ONE-TIME	588	2,718	0	0	0	0	3,306

Department : USAF
 Scenario File : O:\IEB Files\BRAC 2005\COBRA Model & Process\COBRA 6.05\S139\S139 COBRA Hulman.CBR
 Option Pkg Name: S139 Close Hulman Regional APT AGS
 Std Fctrs File : O:\IEB Files\BRAC 2005\COBRA Model & Process\COBRA 6.05\BRAC2005.SFF

Base: Hulman Regional APT, IN (LDXF)								
RECURRINGCOSTS	2006	2007	2008	2009	2010	2011	Total	Beyond
-----(\$K)-----	----	----	----	----	----	----	-----	-----
O&M								
Sustainment	0	1	1	1	1	1	5	1
Recap	0	3	3	3	3	3	17	3
BOS	0	0	0	0	0	0	0	0
Civ Salary	0	0	0	0	0	0	0	0
TRICARE	0	0	0	0	0	0	0	0
MIL PERSONNEL								
Off Salary	0	0	0	0	0	0	0	0
Enl Salary	0	0	0	0	0	0	0	0
House Allow	0	0	0	0	0	0	0	0
OTHER								
Mission Activ	0	0	0	0	0	0	0	0
Misc Recur	0	0	0	0	0	0	0	0
TOTAL RECUR	0	4	4	4	4	4	23	4
TOTAL COSTS	588	2,722	4	4	4	4	3,328	4
ONE-TIME SAVES								
-----(\$K)-----	----	----	----	----	----	----	Total	
CONSTRUCTION								
MILCON	0	0	0	0	0	0	0	
O&M								
1-Time Move	0	0	0	0	0	0	0	
MIL PERSONNEL								
Mil Moving	0	47	0	0	0	0	47	
OTHER								
Environmental	0	0	0	0	0	0	0	
1-Time Other	0	0	0	0	0	0	0	
TOTAL ONE-TIME	0	47	0	0	0	0	47	
RECURRINGSAVES								
-----(\$K)-----	----	----	----	----	----	----	Total	Beyond
FAM HOUSE OPS	0	0	0	0	0	0	0	0
O&M								
Sustainment	342	685	685	685	685	685	3,767	685
Recap	205	411	411	411	411	411	2,261	411
BOS	0	87	87	87	87	87	436	87
Civ Salary	0	0	0	0	0	0	0	0
MIL PERSONNEL								
Off Salary	0	0	0	0	0	0	0	0
Enl Salary	0	0	0	0	0	0	0	0
House Allow	0	113	113	113	113	113	563	113
OTHER								
Procurement	0	0	0	0	0	0	0	0
Mission Activ	0	0	0	0	0	0	0	0
Misc Recur	0	0	0	0	0	0	0	0
TOTAL RECUR	548	1,296	1,296	1,296	1,296	1,296	7,027	1,296

TOTAL SAVINGS

548

1,342

1,296

1,296

1,296

1,296

7,074

1,296

Department : USAF
 Scenario File : O:\IEB Files\BRAC 2005\COBRA Model & Process\COBRA 6.05\S139\S139 COBRA Hulman.CBR
 Option Pkg Name: S139 Close Hulman Regional APT AGS
 Std Fctrs File : O:\IEB Files\BRAC 2005\COBRA Model & Process\COBRA 6.05\BRAC2005.SFF

Base: Hulman Regional APT, IN (LDF)								
ONE-TIME NET	2006	2007	2008	2009	2010	2011	Total	
-----(\$K)-----	----	----	----	----	----	----	-----	-----
CONSTRUCTION								
MILCON	34	384	0	0	0	0	419	
O&M								
Civ Retir/RIF	0	359	0	0	0	0	359	
Civ Moving	58	1,173	0	0	0	0	1,232	
Info Tech	0	17	0	0	0	0	17	
Other	195	153	0	0	0	0	348	
MIL PERSONNEL								
Mil Moving	0	4	0	0	0	0	4	
OTHER								
HAP / RSE	0	0	0	0	0	0	0	
Environmental	300	0	0	0	0	0	300	
Misn Contract	0	0	0	0	0	0	0	
1-Time Other	0	580	0	0	0	0	580	
TOTAL ONE-TIME	588	2,671	0	0	0	0	3,259	
RECURRING NET								
-----(\$K)-----	----	----	----	----	----	----	-----	-----
FAM HOUSE OPS	0	0	0	0	0	0	0	0
O&M								
Sustainment	-342	-684	-684	-684	-684	-684	-3,762	-684
Recap	-205	-407	-407	-407	-407	-407	-2,243	-407
BOS	0	-87	-87	-87	-87	-87	-436	-87
Civ Salary	0	0	0	0	0	0	0	0
TRICARE	0	0	0	0	0	0	0	0
MIL PERSONNEL								
Mil Salary	0	0	0	0	0	0	0	0
House Allow	0	-113	-113	-113	-113	-113	-563	-113
OTHER								
Procurement	0	0	0	0	0	0	0	0
Mission Activ	0	0	0	0	0	0	0	0
Misc Recur	0	0	0	0	0	0	0	0
TOTAL RECUR	-548	-1,291	-1,291	-1,291	-1,291	-1,291	-7,004	-1,291
TOTAL NET COST	40	1,380	-1,291	-1,291	-1,291	-1,291	-3,745	-1,291

Department : USAF
 Scenario File : O:\IEB Files\BRAC 2005\COBRA Model & Process\COBRA 6.05\S139\S139 COBRA Hulman.CBR
 Option Pkg Name: S139 Close Hulman Regional APT AGS
 Std Fctrs File : O:\IEB Files\BRAC 2005\COBRA Model & Process\COBRA 6.05\BRAC2005.SFF

Base: Fort Wayne IAP AGS, IN (ATQZ)	2006	2007	2008	2009	2010	2011	Total
ONE-TIME COSTS	2006	2007	2008	2009	2010	2011	Total
-----(\$K)-----	----	----	----	----	----	----	-----
CONSTRUCTION							
MILCON	22	245	0	0	0	0	267
O&M							
CIV SALARY							
Civ RIFs	0	0	0	0	0	0	0
Civ Retire	0	0	0	0	0	0	0
CIV MOVING							
Per Diem	0	0	0	0	0	0	0
POV Miles	0	0	0	0	0	0	0
Home Purch	0	0	0	0	0	0	0
HHG	0	0	0	0	0	0	0
Misc	0	0	0	0	0	0	0
House Hunt	0	0	0	0	0	0	0
PPP	0	0	0	0	0	0	0
RITA	0	0	0	0	0	0	0
FREIGHT							
Packing	0	0	0	0	0	0	0
Freight	0	0	0	0	0	0	0
Vehicles	0	0	0	0	0	0	0
Unemployment	0	0	0	0	0	0	0
OTHER							
Info Tech	559	610	0	0	0	0	1,169
Prog Manage	0	0	0	0	0	0	0
Supt Contrac	0	0	0	0	0	0	0
Mothball	0	0	0	0	0	0	0
1-Time Move	0	0	0	0	0	0	0
MIL PERSONNEL							
MIL MOVING							
Per Diem	0	0	0	0	0	0	0
POV Miles	0	0	0	0	0	0	0
HHG	0	0	0	0	0	0	0
Misc	0	0	0	0	0	0	0
OTHER							
Elim PCS	0	0	0	0	0	0	0
OTHER							
HAP / RSE	0	0	0	0	0	0	0
Environmental	281	50	0	0	0	0	331
Misn Contract	0	0	0	0	0	0	0
1-Time Other	802	0	0	0	0	0	802
TOTAL ONE-TIME	1,664	905	0	0	0	0	2,569

TOTAL SAVINGS

0

0

0

0

0

0

0

0

Department : USAF
 Scenario File : O:\IEB Files\BRAC 2005\COBRA Model & Process\COBRA 6.05\S139\S139 COBRA Hulman.CBR
 Option Pkg Name: S139 Close Hulman Regional APT AGS
 Std Fctrs File : O:\IEB Files\BRAC 2005\COBRA Model & Process\COBRA 6.05\BRAC2005.SFF

Base: Fort Wayne IAP AGS, IN (ATQZ)								
ONE-TIME NET	2006	2007	2008	2009	2010	2011	Total	
-----(\$K)-----	----	----	----	----	----	----	-----	
CONSTRUCTION								
MILCON	22	245	0	0	0	0	267	
O&M								
Civ Retir/RIF	0	0	0	0	0	0	0	
Civ Moving	0	0	0	0	0	0	0	
Info Tech	559	610	0	0	0	0	1,169	
Other	0	0	0	0	0	0	0	
MIL PERSONNEL								
Mil Moving	0	0	0	0	0	0	0	
OTHER								
HAP / RSE	0	0	0	0	0	0	0	
Environmental	281	50	0	0	0	0	331	
Misn Contract	0	0	0	0	0	0	0	
1-Time Other	802	0	0	0	0	0	802	
TOTAL ONE-TIME	1,664	905	0	0	0	0	2,569	
RECURRING NET								
-----(\$K)-----	----	----	----	----	----	----	-----	Beyond
FAM HOUSE OPS	0	0	0	0	0	0	0	0
O&M								
Sustainment	0	2	2	2	2	2	12	2
Recap	0	2	2	2	2	2	11	2
BOS	0	61	61	61	61	61	304	61
Civ Salary	0	0	0	0	0	0	0	0
TRICARE	0	0	0	0	0	0	0	0
MIL PERSONNEL								
Mil Salary	0	0	0	0	0	0	0	0
House Allow	0	123	123	123	123	123	616	123
OTHER								
Procurement	0	0	0	0	0	0	0	0
Mission Activ	0	0	0	0	0	0	0	0
Misc Recur	0	0	0	0	0	0	0	0
TOTAL RECUR	0	189	189	189	189	189	944	189
TOTAL NET COST	1,664	1,094	189	189	189	189	3,513	189

COBRA INPUT DATA REPORT (COBRA v6.05)

Data As Of 2/2/2005 4:04:03 PM, Report Created 2/9/2005 6:15:49 PM

Department : USAF
 Scenario File : O:\IEB Files\BRAC 2005\COBRA Model & Process\COBRA 6.05\S139\S139 COBRA Hulman.CBR
 Option Pkg Name: S139 Close Hulman Regional APT AGS
 Std Fctrs File : O:\IEB Files\BRAC 2005\COBRA Model & Process\COBRA 6.05\BRAC2005.SFF

INPUT SCREEN ONE - GENERAL SCENARIO INFORMATION

Model Year One : FY 2006
 Model does Time-Phasing of Construction/Shutdown: No

Base Name, ST (Code)	Strategy:
-----	-----
Hulman Regional APT, IN (LDXF)	Realignment
Fort Wayne IAP AGS, IN (ATQZ)	Realignment

INPUT SCREEN TWO - DISTANCE TABLE
(Only shows distances where personnel or equipment are moving)

Point A:	Point B:	Distance:
-----	-----	-----
Hulman Regional APT, IN (LDXF)	Fort Wayne IAP AGS, IN (ATQZ)	183 mi

INPUT SCREEN THREE - MOVEMENT TABLE

Transfers from Hulman Regional APT, IN (LDXF) to Fort Wayne IAP AGS, IN (ATQZ)

	2006	2007	2008	2009	2010	2011
	----	----	----	----	----	----
Officer Positions:	0	2	0	0	0	0
Enlisted Positions:	0	24	0	0	0	0
Civilian Positions:	0	78	0	0	0	0
Student Positions:	0	0	0	0	0	0
NonVeh Missn Eqpt(tons):	96	0	0	0	0	0
Suppt Eqpt (tons):	192	0	0	0	0	0
Military Light Vehicles:	0	0	0	0	0	0
Heavy/Special Vehicles:	0	0	0	0	0	0

INPUT SCREEN FOUR - STATIC BASE INFORMATION

Name: Hulman Regional APT, IN (LDXF)

Total Officer Employees:	8	Base Service (for BOS/Sust):	Air Force
Total Enlisted Employees:	58	Total Sustainment(\$K/Year):	1,420
Total Student Employees:	0	Sustain Payroll (\$K/Year):	0
Total Civilian Employees:	220	BOS Non-Payroll (\$K/Year):	2,782
Accomp Mil not Receiving BAH:	0.0%	BOS Payroll (\$K/Year):	665
Officer Housing Units Avail:	0	Family Housing (\$K/Year):	0
Enlisted Housing Units Avail:	0	Installation PRV(\$K):	103,116
Starting Facilities(KSF):	340	Svc/Agcy Recap Rate (Years):	121
Officer BAH (\$/Month):	766	Homeowner Assistance Program:	No
Enlisted BAH (\$/Month):	663		
Civ Locality Pay Factor:	1.109	TRICARE	In-Pat Out-Pat
Area Cost Factor:	0.98		Admits Visits Prescrip
Per Diem Rate (\$/Day):	86	CostFactor	0.00 0.00 0.00
Freight Cost (\$/Ton/Mile):	0.00	Actv MTF	0 0 0
Vehicle Cost (\$/Lift/Mile):	4.84	Actv Purch	0 0 0
Latitude:	39.451667	Retiree	0 0 0
Longitude:	-87.308330	Retiree65+	0 0 0

Department : USAF
 Scenario File : O:\IEB Files\BRAC 2005\COBRA Model & Process\COBRA 6.05\S139\S139 COBRA Hulman.CBR
 Option Pkg Name: S139 Close Hulman Regional APT AGS
 Std Fctrs File : O:\IEB Files\BRAC 2005\COBRA Model & Process\COBRA 6.05\BRAC2005.SFF

INPUT SCREEN FOUR - STATIC BASE INFORMATION

Name: Fort Wayne IAP AGS, IN (ATQZ)

Total Officer Employees:	4	Base Service (for BOS/Sust):	Air Force
Total Enlisted Employees:	68	Total Sustainment(\$K/Year):	1,460
Total Student Employees:	0	Sustain Payroll (\$K/Year):	0
Total Civilian Employees:	218	BOS Non-Payroll (\$K/Year):	1,944
Accomp Mil not Receiving BAH:	0.0%	BOS Payroll (\$K/Year):	864
Officer Housing Units Avail:	0	Family Housing (\$K/Year):	0
Enlisted Housing Units Avail:	0	Installation PRV(\$K):	107,261
Starting Facilities(KSF):	362	Svc/Agcy Recap Rate (Years):	121
Officer BAH (\$/Month):	871	Homeowner Assistance Program:	No
Enlisted BAH (\$/Month):	723		
Civ Locality Pay Factor:	1.109	TRICARE	In-Pat Out-Pat
Area Cost Factor:	0.98		Admits Visits Prescrip
Per Diem Rate (\$/Day):	100	CostFactor	0.00 0.00 0.00
Freight Cost (\$/Ton/Mile):	0.12	Actv MTF	0 0 0
Vehicle Cost (\$/Lift/Mile):	4.84	Actv Purch	0 0 0
Latitude:	40.978333	Retiree	0 0 0
Longitude:	-85.195000	Retiree65+	0 0 0

INPUT SCREEN FIVE - DYNAMIC BASE INFORMATION

Name: Hulman Regional APT, IN (LDXF)

	2006	2007	2008	2009	2010	2011
	----	----	----	----	----	----
1-Time Unique Cost (\$K):	0	580	0	0	0	0
1-Time Unique Save (\$K):	0	0	0	0	0	0
1-Time Moving Cost (\$K):	33	0	0	0	0	0
1-Time Moving Save (\$K):	0	0	0	0	0	0
Env Non-MilCon Req(\$K):	300	0	0	0	0	0
Activ Mission Cost (\$K):	0	0	0	0	0	0
Activ Mission Save (\$K):	0	0	0	0	0	0
Misn Contract Start(\$K):	0	0	0	0	0	0
Misn Contract Term (\$K):	0	0	0	0	0	0
Supt Contract Term (\$K):	0	0	0	0	0	0
Misc Recurring Cost(\$K):	0	0	0	0	0	0
Misc Recurring Save(\$K):	0	0	0	0	0	0
One-Time IT Costs (\$K):	0	0	0	0	0	0
Construction Schedule(%):	0%	100%	0%	0%	0%	0%
Shutdown Schedule (%):	50%	50%	0%	0%	0%	0%
Misn Milcon Avoidnc(\$K):	0	0	0	0	0	0
Procurement Avoidnc(\$K):	0	0	0	0	0	0
MTF Closure Action:	None	Fac ShDn(KSF):		164	FH ShDn:	0.000%

Department : USAF
 Scenario File : O:\IEB Files\BRAC 2005\COBRA Model & Process\COBRA 6.05\S139\S139 COBRA Hulman.CBR
 Option Pkg Name: S139 Close Hulman Regional APT AGS
 Std Fctrs File : O:\IEB Files\BRAC 2005\COBRA Model & Process\COBRA 6.05\BRAC2005.SFF

INPUT SCREEN FIVE - DYNAMIC BASE INFORMATION

Name: Fort Wayne IAP AGS, IN (ATQZ)	2006	2007	2008	2009	2010	2011
	----	----	----	----	----	----
1-Time Unique Cost (\$K):	802	0	0	0	0	0
1-Time Unique Save (\$K):	0	0	0	0	0	0
1-Time Moving Cost (\$K):	0	0	0	0	0	0
1-Time Moving Save (\$K):	0	0	0	0	0	0
Env Non-MilCon Reqd(\$K):	281	50	0	0	0	0
Activ Mission Cost (\$K):	0	0	0	0	0	0
Activ Mission Save (\$K):	0	0	0	0	0	0
Misn Contract Start(\$K):	0	0	0	0	0	0
Misn Contract Term (\$K):	0	0	0	0	0	0
Supt Contract Term (\$K):	0	0	0	0	0	0
Misc Recurring Cost(\$K):	0	0	0	0	0	0
Misc Recurring Save(\$K):	0	0	0	0	0	0
One-Time IT Costs (\$K):	559	610	0	0	0	0
Construction Schedule(%):	0%	100%	0%	0%	0%	0%
Shutdown Schedule (%):	0%	0%	0%	0%	0%	0%
Misn Milcon Avoidnc(\$K):	0	0	0	0	0	0
Procurement Avoidnc(\$K):	0	0	0	0	0	0
MTF Closure Action:	None	Fac	ShDn(KSF):	0	FH	ShDn: 0.000%

INPUT SCREEN SIX - BASE PERSONNEL INFORMATION

Name: Hulman Regional APT, IN (LDXF)	2006	2007	2008	2009	2010	2011
	----	----	----	----	----	----
Off Scenario Change:	0	0	0	0	0	0
Enl Scenario Change:	0	0	0	0	0	0
Civ Scenario Change:	0	0	0	0	0	0
Off Prog nonBRAC Change:	0	-1	-1	0	0	0
Enl Prog nonBRAC Change:	2	-8	0	0	0	0
Civ Prog nonBRAC Change:	0	-78	0	0	0	0
Stu Prog nonBRAC Change:	0	0	0	0	0	0
Prog FH Privatization:	0%	0%	0%	0%	0%	0%

Name: Fort Wayne IAP AGS, IN (ATQZ)	2006	2007	2008	2009	2010	2011
	----	----	----	----	----	----
Off Scenario Change:	0	0	0	0	0	0
Enl Scenario Change:	0	0	0	0	0	0
Civ Scenario Change:	0	0	0	0	0	0
Off Prog nonBRAC Change:	0	0	0	0	0	0
Enl Prog nonBRAC Change:	5	-1	0	0	0	0
Civ Prog nonBRAC Change:	-3	-1	0	0	0	0
Stu Prog nonBRAC Change:	0	0	0	0	0	0
Prog FH Privatization:	0%	0%	0%	0%	0%	0%

Department : USAF
 Scenario File : O:\IEB Files\BRAC 2005\COBRA Model & Process\COBRA 6.05\S139\S139 COBRA Hulman.CBR
 Option Pkg Name: S139 Close Hulman Regional APT AGS
 Std Fctrs File : O:\IEB Files\BRAC 2005\COBRA Model & Process\COBRA 6.05\BRAC2005.SFF

INPUT SCREEN SEVEN - BASE MILITARY CONSTRUCTION INFORMATION

Name: Hulman Regional APT, IN (LDXF)

FAC	UM	New MilCon	Rehab MilCon	TotCost(\$K)	FPG Con CF	FPG Sust CF
8721	LF	2,400	0 Default	120	33.89	0.49
1714	SF	0	2,500 Default	244	137.77	4.15
4423	SF	0	600 Default	55	122.74	5.17

Name: Fort Wayne IAP AGS, IN (ATQZ)

FAC	UM	New MilCon	Rehab MilCon	TotCost(\$K)	FPG Con CF	FPG Sust CF
1411	SF	800	0 Default	267	226.91	3.45

STANDARD FACTORS SCREEN ONE - PERSONNEL

SF File Descrip:

Perc Officers Accompanied:	72.00%	Priority Placement Program:	39.97%
Perc Enlisted Accompanied:	55.00%	PPP Actions Involving PCS:	50.70%
Officer Salary(\$/Year):	124,971.93	Civilian PCS Costs (\$):	35,496.00
Enlisted Salary(\$/Year):	82,399.09	Home Sale Reimburse Rate:	10.00%
Civilian Salary(\$/Year):	59,959.18	Max Home Sale Reimburs(\$):	50,000.00
Avg Unemploy Cost(\$/Week):	272.90	Home Purch Reimburse Rate:	5.00%
Unemployment Eligibility(Weeks):	16	Max Home Purch Reimburs(\$):	25,000.00
Civilians Not Willing To Move:	6.00%	Civilian Homeowning Rate:	68.40%
Civilian Turnover Rate:	9.16%	HAP Home Value Reimburse Rate:	13.46%
Civilian Early Retire Rate:	8.10%	HAP Homeowner Receiving Rate:	18.44%
Civilian Regular Retire Rate:	1.67%	RSE Home Value Reimburse Rate:	0.00%
Civilian RIF Pay Factor:	86.32%	RSE Homeowner Receiving Rate:	0.00%
Civ Early Retire Pay Factor:	18.03%		

STANDARD FACTORS SCREEN TWO - FACILITIES

	Army	Navy	Air Force	Marines
Service Sustainment Rate	87.00%	93.00%	92.00%	97.00%
Unit Cost Adjustment (BOS)	10332.00	8879.00	3032.00	3904.00
Program Management Factor:	10.00	MilCon Site Prep Cost (\$/SF):	0.74	
Mothball (Close) (\$/SF):	0.18	MilCon Contingency Plan Rate:	5.00%	
Mothball (Deac/Realn) (\$/SF):	0.45	MilCon Design Rate (Medical):	13.00%	
Rehab vs. MilCon (Default):	47.00%	MilCon Design Rate (Other):	9.00%	
Rehab vs. MilCon (Red):	64.00%	MilCon SIOH Rate:	6.00%	
Rehab vs. MilCon (Amber):	29.00%	Discount Rate for NPV/Payback:	3.15%	

STANDARD FACTORS SCREEN THREE - TRANSPORTATION

Material/Assigned Mil (Lb):	710	Storage-In-Transit (\$/Pers):	373.76
HHG Per Off Accomp (Lb):	15,290.00	POV Reimburse(\$/Mile):	0.20
HHG Per Enl Accomp (Lb):	9,204.00	Air Transport (\$/Pass Mile):	0.20

HHG Per Off Unaccomp (Lb):	13,712.00	IT Connect (\$/Person):	200.00
HHG Per Enl Unaccomp (Lb):	6,960.00	Misc Exp(\$/Direct Employee):	1,000.00
HHG Per Civilian (Lb):	18,000.00	Avg Mil Tour Length (Months):	30.02
Total HHG Cost (\$/100Lb):	8.78	One-Time Off PCS Cost(\$):	10,477.58
Equip Pack & Crate(\$/Ton):	180.67	One-Time Enl PCS Cost(\$):	3,998.52

Department : USAF
 Scenario File : O:\IEB Files\BRAC 2005\COBRA Model & Process\COBRA 6.05\S139\S139 COBRA Hulman.CBR
 Option Pkg Name: S139 Close Hulman Regional APT AGS
 Std Fctrs File : O:\IEB Files\BRAC 2005\COBRA Model & Process\COBRA 6.05\BRAC2005.SFF

FOOTNOTES FOR SCREEN ONE

=====
 Close Hulman Regional AGS flight operations and enclave ECS at Hulman.
 15 F-16 B30 move,
 9 F-16s to Ft. Wayne,
 6 F-16 to FFS Retire,
 ECS to remain in place as an enclave.

FOOTNOTES FOR SCREEN FIVE

=====
 Hulman
 FY 2006:
 Environmental Non-MilCon \$300K for NEPA and Clean Fuel Storage

FY 2007:
 One Time Unique cost of \$580 demolishes 3 aircraft arresting barriers.

Ft Wayne
 FY 2006
 One time cost of \$801,970 is for training 31 ANG personnel from Hulman.
 One Time IT cost of \$610K is for a network server and 500 line phone switch.

FY 2007
 One-Time IT costs of \$559K for phones, secure telephone equipment (STEs), land mobile radios (LMRs), cell phones, and pagers.

FOOTNOTES FOR SCREEN SEVEN

=====
 MilCon total cost includes the primary facility, supporting facilities, anti-terrorism/force protection ACF, markup and design.

Department : USAF
 Scenario File : O:\IEB Files\BRAC 2005\COBRA Model & Process\COBRA 6.05\S139\S139 COBRA Hulman.CBR
 Option Pkg Name: S139 Close Hulman Regional APT AGS
 Std Fctrs File : O:\IEB Files\BRAC 2005\COBRA Model & Process\COBRA 6.05\BRAC2005.SFF

All values in 2005 Constant Dollars

Base Name	Total MilCon*	Milcon Cost Avoidance	Total Net Costs
Hulman Regional APT	419,000	0	419,000
Fort Wayne IAP AGS	267,000	0	267,000
Totals:	686,000	0	686,000

* All MilCon Costs include Design, Site Preparation, Contingency Planning, and SIOH Costs where applicable.

Department : USAF
 Scenario File : O:\IEB Files\BRAC 2005\COBRA Model & Process\COBRA 6.05\S139\S139 COBRA Hulman.CBR
 Option Pkg Name: S139 Close Hulman Regional APT AGS
 Std Fctrs File : O:\IEB Files\BRAC 2005\COBRA Model & Process\COBRA 6.05\BRAC2005.SFF

MilCon for Base: Hulman Regional APT, IN (LDFX)

All values in 2005 Constant Dollars (\$K)

FAC	Title	UM	New MilCon	New Cost*	Using Rehab Rehab Type	Rehab Cost*	Total Cost*
8721	Fence and Wall	LF	2,400	n/a**	0 Default	n/a**	120
1714	Reserve Component Training Facility	SF	0	n/a**	2,500 Default	n/a**	244
4423	Hazardous Materials Storage, Installation	SF	0	n/a**	600 Default	n/a**	55
						Total Construction Cost:	419
						- Construction Cost Avoid:	0
						Total Net Milcon Cost:	419

* All MilCon Costs include Design, Site Preparation, Contingency Planning, and SIOH Costs where applicable.

**No New Milcon / Rehabilitation Cost breakdown is available if Total Cost was entered by the user.

Department : USAF
 Scenario File : O:\IEB Files\BRAC 2005\COBRA Model & Process\COBRA 6.05\S139\S139 COBRA Hulman.CBR
 Option Pkg Name: S139 Close Hulman Regional APT AGS
 Std Fctrs File : O:\IEB Files\BRAC 2005\COBRA Model & Process\COBRA 6.05\BRAC2005.SFF

MilCon for Base: Fort Wayne IAP AGS, IN (ATQZ)

All values in 2005 Constant Dollars (\$K)

FAC Title	UM	New MilCon	New Cost*	Using Rehab Rehab Type	Rehab Cost*	Total Cost*
1411 Airfield Fire and Rescue Station	SF	800	n/a**	0 Default	n/a**	267
Total Construction Cost:						267
- Construction Cost Avoid:						0
Total Net Milcon Cost:						267

* All MilCon Costs include Design, Site Preparation, Contingency Planning, and SIOH Costs where applicable.

**No New Milcon / Rehabilitation Cost breakdown is available if Total Cost was entered by the user.

Department : USAF
 Scenario File : O:\IEB Files\BRAC 2005\COBRA Model & Process\COBRA 6.05\S139\S139 COBRA Hulman.CBR
 Option Pkg Name: S139 Close Hulman Regional APT AGS
 Std Fctrs File : O:\IEB Files\BRAC 2005\COBRA Model & Process\COBRA 6.05\BRAC2005.SFF

Year	Cost(\$)	Adjusted Cost(\$)	NPV(\$)
2006	1,704,236	1,678,012	1,678,012
2007	2,473,361	2,360,933	4,038,945
2008	-1,102,503	-1,020,250	3,018,695
2009	-1,102,503	-989,094	2,029,601
2010	-1,102,503	-958,889	1,070,712
2011	-1,102,503	-929,606	141,105
2012	-1,102,503	-901,218	-760,112
2013	-1,102,503	-873,696	-1,633,809
2014	-1,102,503	-847,015	-2,480,825
2015	-1,102,503	-821,149	-3,301,974
2016	-1,102,503	-796,073	-4,098,047
2017	-1,102,503	-771,762	-4,869,810
2018	-1,102,503	-748,194	-5,618,004
2019	-1,102,503	-725,346	-6,343,350
2020	-1,102,503	-703,195	-7,046,545
2021	-1,102,503	-681,721	-7,728,267
2022	-1,102,503	-660,903	-8,389,169
2023	-1,102,503	-640,720	-9,029,889
2024	-1,102,503	-621,154	-9,651,043
2025	-1,102,503	-602,185	-10,253,228

Department : USAF

Scenario File : O:\IEB Files\BRAC 2005\COBRA Model & Process\COBRA 6.05\S139\S139 COBRA Hulman.CBR
Option Pkg Name: S139 Close Hulman Regional APT AGS
Std Fctrs File : O:\IEB Files\BRAC 2005\COBRA Model & Process\COBRA 6.05\BRAC2005.SFF

(All values in 2005 Constant Dollars)

Category	Cost	Sub-Total
-----	----	-----
Construction		
Military Construction	686,000	
Total - Construction		686,000
Personnel		
Civilian RIF	286,991	
Civilian Early Retirement	71,934	
Eliminated Military PCS	0	
Unemployment	22,255	
Total - Personnel		381,180
Overhead		
Program Management Cost	219,354	
Support Contract Termination	0	
Mothball / Shutdown	73,800	
Total - Overhead		293,154
Moving		
Civilian Moving	1,135,760	
Civilian PPP	0	
Military Moving	50,664	
Freight	96,079	
Information Technologies	1,186,000	
One-Time Moving Costs	33,000	
Total - Moving		2,501,503
Other		
HAP / RSE	0	
Environmental Mitigation Costs	631,000	
Mission Contract Startup and Termination	0	
One-Time Unique Costs	1,382,000	
Total - Other		2,013,000

Total One-Time Costs		5,874,838

One-Time Savings		
Military Construction Cost Avoidances	0	
Military Moving	46,737	
One-Time Moving Savings	0	
Environmental Mitigation Savings	0	
One-Time Unique Savings	0	

Total One-Time Savings		46,737

Total Net One-Time Costs		5,828,101

Department : USAF
 Scenario File : O:\IEB Files\BRAC 2005\COBRA Model & Process\COBRA 6.05\S139\S139 COBRA Hulman.CBR
 Option Pkg Name: S139 Close Hulman Regional APT AGS
 Std Fctrs File : O:\IEB Files\BRAC 2005\COBRA Model & Process\COBRA 6.05\BRAC2005.SFF

Base: Hulman Regional APT, IN (LDXF)
 (All values in 2005 Constant Dollars)

Category	Cost	Sub-Total
-----	----	-----
Construction		
Military Construction	419,000	
Total - Construction		419,000
Personnel		
Civilian RIF	286,991	
Civilian Early Retirement	71,934	
Eliminated Military PCS	0	
Unemployment	22,255	
Total - Personnel		381,180
Overhead		
Program Management Cost	219,354	
Support Contract Termination	0	
Mothball / Shutdown	73,800	
Total - Overhead		293,154
Moving		
Civilian Moving	1,135,760	
Civilian PPP	0	
Military Moving	50,664	
Freight	96,079	
Information Technologies	17,000	
One-Time Moving Costs	33,000	
Total - Moving		1,332,503
Other		
HAP / RSE	0	
Environmental Mitigation Costs	300,000	
Mission Contract Startup and Termination	0	
One-Time Unique Costs	580,000	
Total - Other		880,000
Total One-Time Costs		3,305,838

One-Time Savings		
Military Construction Cost Avoidances	0	
Military Moving	46,737	
One-Time Moving Savings	0	
Environmental Mitigation Savings	0	
One-Time Unique Savings	0	
Total One-Time Savings		46,737

Total Net One-Time Costs		3,259,101

Department : USAF
 Scenario File : O:\IEB Files\BRAC 2005\COBRA Model & Process\COBRA 6.05\S139\S139 COBRA Hulman.CBR
 Option Pkg Name: S139 Close Hulman Regional APT AGS
 Std Fctrs File : O:\IEB Files\BRAC 2005\COBRA Model & Process\COBRA 6.05\BRAC2005.SFF

Base: Fort Wayne IAP AGS, IN (ATQZ)
 (All values in 2005 Constant Dollars)

Category	Cost	Sub-Total
-----	----	-----
Construction		
Military Construction	267,000	
Total - Construction		267,000
Personnel		
Civilian RIF	0	
Civilian Early Retirement	0	
Eliminated Military PCS	0	
Unemployment	0	
Total - Personnel		0
Overhead		
Program Management Cost	0	
Support Contract Termination	0	
Mothball / Shutdown	0	
Total - Overhead		0
Moving		
Civilian Moving	0	
Civilian PPP	0	
Military Moving	0	
Freight	0	
Information Technologies	1,169,000	
One-Time Moving Costs	0	
Total - Moving		1,169,000
Other		
HAP / RSE	0	
Environmental Mitigation Costs	331,000	
Mission Contract Startup and Termination	0	
One-Time Unique Costs	802,000	
Total - Other		1,133,000
Total One-Time Costs		2,569,000

One-Time Savings		
Military Construction Cost Avoidances	0	
Military Moving	0	
One-Time Moving Savings	0	
Environmental Mitigation Savings	0	
One-Time Unique Savings	0	
Total One-Time Savings		0
Total Net One-Time Costs		2,569,000

Department : USAF
 Scenario File : O:\IEB Files\BRAC 2005\COBRA Model & Process\COBRA 6.05\S139\S139 COBRA Hulman.CBR
 Option Pkg Name: S139 Close Hulman Regional APT AGS
 Std Fctrs File : O:\IEB Files\BRAC 2005\COBRA Model & Process\COBRA 6.05\BRAC2005.SFF

Net Change(\$K)	2006	2007	2008	2009	2010	2011	Total	Beyond
Sustain Change	-342	-681	-681	-681	-681	-681	-3,749	-681
Recap Change	-205	-405	-405	-405	-405	-405	-2,232	-405
BOS Change	0	-26	-26	-26	-26	-26	-132	-26
Housing Change	0	0	0	0	0	0	0	0
TOTAL CHANGES	-548	-1,113	-1,113	-1,113	-1,113	-1,113	-6,114	-1,113

Hulman Regional APT, IN (L DXF)

Net Change(\$K)	2006	2007	2008	2009	2010	2011	Total	Beyond
Sustain Change	-342	-684	-684	-684	-684	-684	-3,762	-684
Recap Change	-205	-407	-407	-407	-407	-407	-2,243	-407
BOS Change	0	-87	-87	-87	-87	-87	-436	-87
Housing Change	0	0	0	0	0	0	0	0
TOTAL CHANGES	-548	-1,179	-1,179	-1,179	-1,179	-1,179	-6,441	-1,179

Fort Wayne IAP AGS, IN (ATQZ)

Net Change(\$K)	2006	2007	2008	2009	2010	2011	Total	Beyond
Sustain Change	0	2	2	2	2	2	12	2
Recap Change	0	2	2	2	2	2	11	2
BOS Change	0	61	61	61	61	61	304	61
Housing Change	0	0	0	0	0	0	0	0
TOTAL CHANGES	0	65	65	65	65	65	328	65

TOTAL COBRA PERSONNEL IMPACT REPORT (COBRA v6.05) - Page 1/3

Department : USAF
 Scenario File : O:\IEB Files\BRAC 2005\COBRA Model & Process\COBRA 6.05\S139\S139 COBRA Hulman.CBR
 Option Pkg Name: S139 Close Hulman Regional APT AGS
 Std Fctrs File : O:\IEB Files\BRAC 2005\COBRA Model & Process\COBRA 6.05\BRAC2005.SFF

	Rate	2006	2007	2008	2009	2010	2011	Total
CIVILIAN POSITIONS REALIGNING OUT		0	78	0	0	0	0	78
Early Retirement*	8.10%	0	6	0	0	0	0	6
Regular Retirement*	1.67%	0	1	0	0	0	0	1
Civilian Turnover*	9.16%	0	7	0	0	0	0	7
Civs Not Moving (RIFs)*	6.00%	0	5	0	0	0	0	5
Civilians Moving (the remainder)		0	59	0	0	0	0	59
Civilian Positions Available		0	19	0	0	0	0	19
CIVILIAN POSITIONS ELIMINATED		0	0	0	0	0	0	0
Early Retirement	8.10%	0	0	0	0	0	0	0
Regular Retirement	1.67%	0	0	0	0	0	0	0
Civilian Turnover	9.16%	0	0	0	0	0	0	0
Civs Not Moving (RIFs)*	6.00%	0	0	0	0	0	0	0
Priority Placement#	39.97%	0	0	0	0	0	0	0

Civilians Available to Move	0	0	0	0	0	0	0
Civilians Moving	0	0	0	0	0	0	0
Civilian RIFs (the remainder)	0	0	0	0	0	0	0
CIVILIAN POSITIONS REALIGNING IN	0	78	0	0	0	0	78
Civilians Moving	0	59	0	0	0	0	59
New Civilians Hired	0	19	0	0	0	0	19
Other Civilian Additions	0	0	0	0	0	0	0
TOTAL CIVILIAN EARLY RETIRMENTS	0	6	0	0	0	0	6
TOTAL CIVILIAN RIFS	0	5	0	0	0	0	5
TOTAL CIVILIAN PRIORITY PLACEMENTS#	0	0	0	0	0	0	0
TOTAL CIVILIAN NEW HIRES	0	19	0	0	0	0	19

* Early Retirements, Regular Retirements, Civilian Turnover, and Civilians Not Willing to Move are not applicable for moves under fifty miles.

Not all Priority Placements involve a Permanent Change of Station. The rate of PPP placements involving a PCS is 50.70%

Department : USAF
 Scenario File : O:\IEB Files\BRAC 2005\COBRA Model & Process\COBRA 6.05\S139\S139 COBRA Hulman.CBR
 Option Pkg Name: S139 Close Hulman Regional APT AGS
 Std Fctrs File : O:\IEB Files\BRAC 2005\COBRA Model & Process\COBRA 6.05\BRAC2005.SFF

Base: Hulman Regional APT, IN (LXDF)Rate	2006	2007	2008	2009	2010	2011	Total
CIVILIAN POSITIONS REALIGNING OUT	0	78	0	0	0	0	78
Early Retirement*	8.10%	0	6	0	0	0	6
Regular Retirement*	1.67%	0	1	0	0	0	1
Civilian Turnover*	9.16%	0	7	0	0	0	7
Civs Not Moving (RIFs)*	6.00%	0	5	0	0	0	5
Civilians Moving (the remainder)		0	59	0	0	0	59
Civilian Positions Available		0	19	0	0	0	19
CIVILIAN POSITIONS ELIMINATED	0	0	0	0	0	0	0
Early Retirement	8.10%	0	0	0	0	0	0
Regular Retirement	1.67%	0	0	0	0	0	0
Civilian Turnover	9.16%	0	0	0	0	0	0
Civs Not Moving (RIFs)*	6.00%	0	0	0	0	0	0
Priority Placement#	39.97%	0	0	0	0	0	0
Civilians Available to Move		0	0	0	0	0	0
Civilians Moving		0	0	0	0	0	0
Civilian RIFs (the remainder)		0	0	0	0	0	0
CIVILIAN POSITIONS REALIGNING IN	0	0	0	0	0	0	0
Civilians Moving		0	0	0	0	0	0
New Civilians Hired		0	0	0	0	0	0
Other Civilian Additions		0	0	0	0	0	0
TOTAL CIVILIAN EARLY RETIRMENTS		0	6	0	0	0	6
TOTAL CIVILIAN RIFs		0	5	0	0	0	5
TOTAL CIVILIAN PRIORITY PLACEMENTS#		0	0	0	0	0	0
TOTAL CIVILIAN NEW HIRES		0	0	0	0	0	0

* Early Retirements, Regular Retirements, Civilian Turnover, and Civilians Not Willing to Move are not applicable for moves under fifty miles.

Not all Priority Placements involve a Permanent Change of Station. The rate of PPP placements involving a PCS is 50.70%

Department : USAF
 Scenario File : O:\IEB Files\BRAC 2005\COBRA Model & Process\COBRA 6.05\S139\S139 COBRA Hulman.CBR
 Option Pkg Name: S139 Close Hulman Regional APT AGS
 Std Fctrs File : O:\IEB Files\BRAC 2005\COBRA Model & Process\COBRA 6.05\BRAC2005.SFF

Base: Fort Wayne IAP AGS, IN (ATQZ)	Rate	2006	2007	2008	2009	2010	2011	Total
CIVILIAN POSITIONS REALIGNING OUT		0	0	0	0	0	0	0
Early Retirement*	8.10%	0	0	0	0	0	0	0
Regular Retirement*	1.67%	0	0	0	0	0	0	0
Civilian Turnover*	9.16%	0	0	0	0	0	0	0
Civs Not Moving (RIFs)*	6.00%	0	0	0	0	0	0	0
Civilians Moving (the remainder)		0	0	0	0	0	0	0
Civilian Positions Available		0	0	0	0	0	0	0
CIVILIAN POSITIONS ELIMINATED		0	0	0	0	0	0	0
Early Retirement	8.10%	0	0	0	0	0	0	0
Regular Retirement	1.67%	0	0	0	0	0	0	0
Civilian Turnover	9.16%	0	0	0	0	0	0	0
Civs Not Moving (RIFs)*	6.00%	0	0	0	0	0	0	0
Priority Placement#	39.97%	0	0	0	0	0	0	0
Civilians Available to Move		0	0	0	0	0	0	0
Civilians Moving		0	0	0	0	0	0	0
Civilian RIFs (the remainder)		0	0	0	0	0	0	0
CIVILIAN POSITIONS REALIGNING IN		0	78	0	0	0	0	78
Civilians Moving		0	59	0	0	0	0	59
New Civilians Hired		0	19	0	0	0	0	19
Other Civilian Additions		0	0	0	0	0	0	0
TOTAL CIVILIAN EARLY RETIRMENTS		0	0	0	0	0	0	0
TOTAL CIVILIAN RIFS		0	0	0	0	0	0	0
TOTAL CIVILIAN PRIORITY PLACEMENTS#		0	0	0	0	0	0	0
TOTAL CIVILIAN NEW HIRES		0	19	0	0	0	0	19

* Early Retirements, Regular Retirements, Civilian Turnover, and Civilians Not Willing to Move are not applicable for moves under fifty miles.

Not all Priority Placements involve a Permanent Change of Station. The rate of PPP placements involving a PCS is 50.70%

COBRA PERSONNEL SUMMARY REPORT (COBRA v6.05)

Department : USAF
 Scenario File : O:\IEB Files\BRAC 2005\COBRA Model & Process\COBRA 6.05\S139\S139 COBRA Hulman.CBR
 Option Pkg Name: S139 Close Hulman Regional APT AGS
 Std Fctrs File : O:\IEB Files\BRAC 2005\COBRA Model & Process\COBRA 6.05\BRAC2005.SFF

PERSONNEL SUMMARY FOR: Hulman Regional APT, IN (LDXF)

BASE POPULATION (FY 2005):

Officers	Enlisted	Students	Civilians
8	58	0	220

PROGRAMMED INSTALLATION (NON-BRAC) CHANGES FOR: Hulman Regional APT, IN (LDXF)

	2006	2007	2008	2009	2010	2011	Total
Officers	0	-1	-1	0	0	0	-2
Enlisted	2	-8	0	0	0	0	-6
Students	0	0	0	0	0	0	0
Civilians	0	-78	0	0	0	0	-78
TOTAL	2	-87	-1	0	0	0	-86

BASE POPULATION (Prior to BRAC Action) FOR: Hulman Regional APT, IN (LDXF)

Officers	Enlisted	Students	Civilians
6	52	0	142

PERSONNEL REALIGNMENTS:

To Base: Fort Wayne IAP AGS, IN (ATQZ)

	2006	2007	2008	2009	2010	2011	Total
Officers	0	2	0	0	0	0	2
Enlisted	0	24	0	0	0	0	24
Students	0	0	0	0	0	0	0
Civilians	0	78	0	0	0	0	78
TOTAL	0	104	0	0	0	0	104

TOTAL PERSONNEL REALIGNMENTS (Out of Hulman Regional APT, IN (LDXF)):

	2006	2007	2008	2009	2010	2011	Total
Officers	0	2	0	0	0	0	2
Enlisted	0	24	0	0	0	0	24
Students	0	0	0	0	0	0	0
Civilians	0	78	0	0	0	0	78
TOTAL	0	104	0	0	0	0	104

BASE POPULATION (After BRAC Action) FOR: Hulman Regional APT, IN (LDXF)

Officers	Enlisted	Students	Civilians
4	28	0	64

PERSONNEL SUMMARY FOR: Fort Wayne IAP AGS, IN (ATQZ)

BASE POPULATION (FY 2005):

Officers	Enlisted	Students	Civilians
4	68	0	218

PROGRAMMED INSTALLATION (NON-BRAC) CHANGES FOR: Fort Wayne IAP AGS, IN (ATQZ)

	2006	2007	2008	2009	2010	2011	Total
Officers	0	0	0	0	0	0	0
Enlisted	5	-1	0	0	0	0	4
Students	0	0	0	0	0	0	0
Civilians	-3	-1	0	0	0	0	-4
TOTAL	2	-2	0	0	0	0	0

BASE POPULATION (Prior to BRAC Action) FOR: Fort Wayne IAP AGS, IN (ATQZ)

Officers	Enlisted	Students	Civilians
4	72	0	214

Department : USAF
 Scenario File : O:\IEB Files\BRAC 2005\COBRA Model & Process\COBRA 6.05\S139\S139 COBRA Hulman.CBR
 Option Pkg Name: S139 Close Hulman Regional APT AGS
 Std Fctrs File : O:\IEB Files\BRAC 2005\COBRA Model & Process\COBRA 6.05\BRAC2005.SFF

PERSONNEL REALIGNMENTS:

From Base: Hulman Regional APT, IN (LDFX)

	2006	2007	2008	2009	2010	2011	Total
Officers	0	2	0	0	0	0	2
Enlisted	0	24	0	0	0	0	24
Students	0	0	0	0	0	0	0
Civilians	0	78	0	0	0	0	78
TOTAL	0	104	0	0	0	0	104

TOTAL PERSONNEL REALIGNMENTS (Into Fort Wayne IAP AGS, IN (ATQZ)):

	2006	2007	2008	2009	2010	2011	Total
Officers	0	2	0	0	0	0	2
Enlisted	0	24	0	0	0	0	24
Students	0	0	0	0	0	0	0
Civilians	0	78	0	0	0	0	78
TOTAL	0	104	0	0	0	0	104

BASE POPULATION (After BRAC Action) FOR: Fort Wayne IAP AGS, IN (ATQZ)

Officers	Enlisted	Students	Civilians
6	96	0	292

Economic Impact Report

This report depicts the economic impact of the following Scenarios:

USAF-0040: AF Hulman (S139)

The data in this report is rolled up by Action

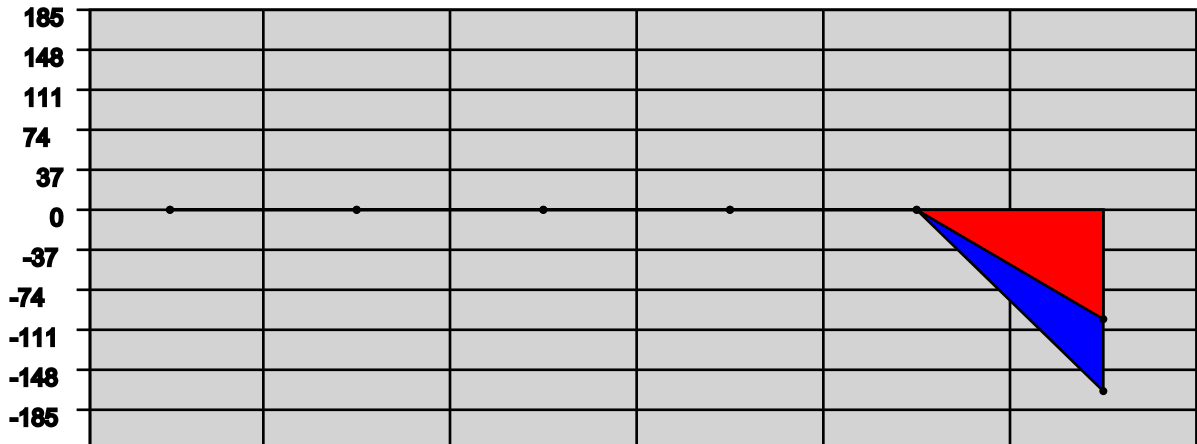
ECONOMIC IMPACT DATA

Scenario: AF Hulman (S139)
Economic Region of Influence(ROI): Terre Haute, IN Metropolitan Statistical Area
Base: Hulman Regional APT AGS
Action: 15 F-16 B30 to Fort Wayne and FFS Retire

Overall Economic Impact of Proposed BRAC-05 Action:

ROI Population (2002):	169,617
ROI Employment (2002):	89,765
Authorized Manpower (2005):	286
Authorized Manpower(2005) / ROI Employment(2002):	0.32%
Total Estimated Job Change:	-170
Total Estimated Job Change / ROI Employment(2002):	-0.19%

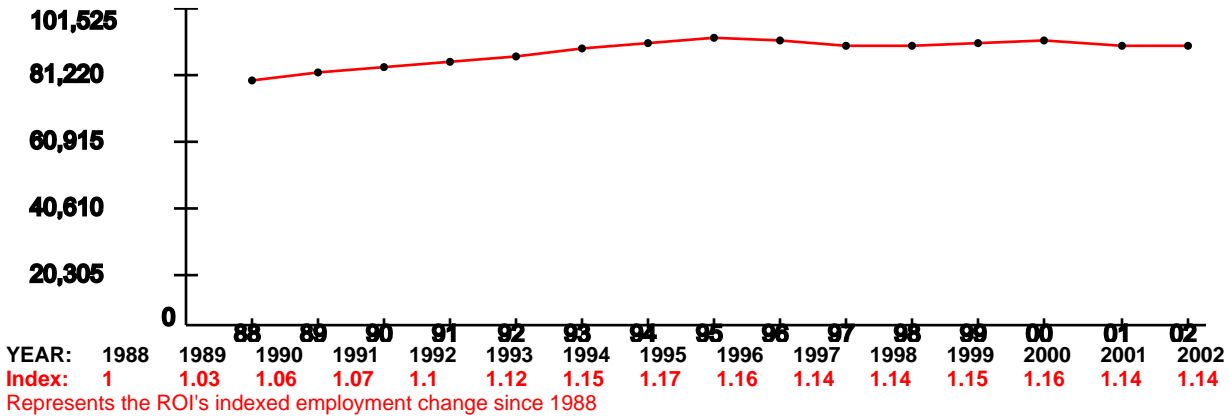
Cumulative Job Change (Gain/Loss) Over Time:



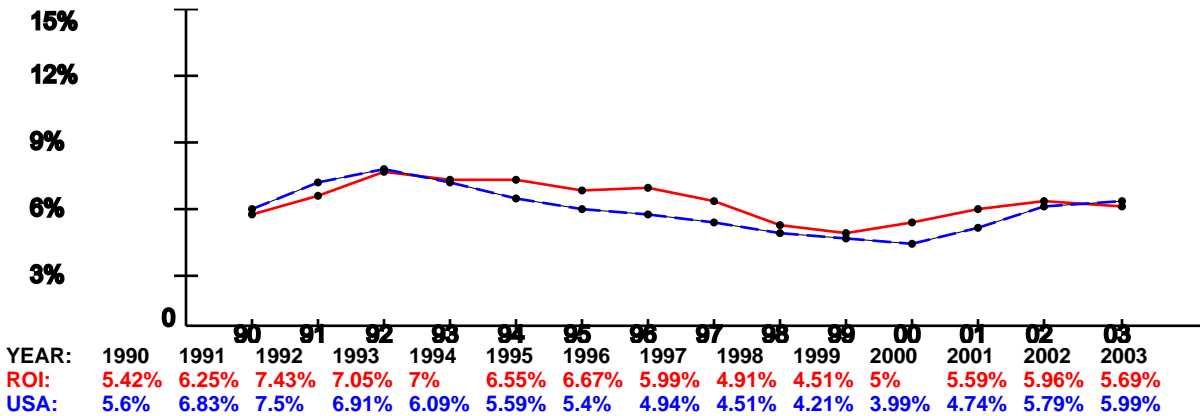
YEAR:	2006	2007	2008	2009	2010	2011
Direct Military:	0	0	0	0	0	-26
Direct Civilian:	0	0	0	0	0	-78
Direct Student:	0	0	0	0	0	0
Direct Contractor:	0	0	0	0	0	0
Cumulative Direct:	0	0	0	0	0	-104
Cum Indir/Induc:	0	0	0	0	0	-66
Cumulative Total:	0	0	0	0	0	-170

Terre Haute, IN Metropolitan Statistical Area Trend Data

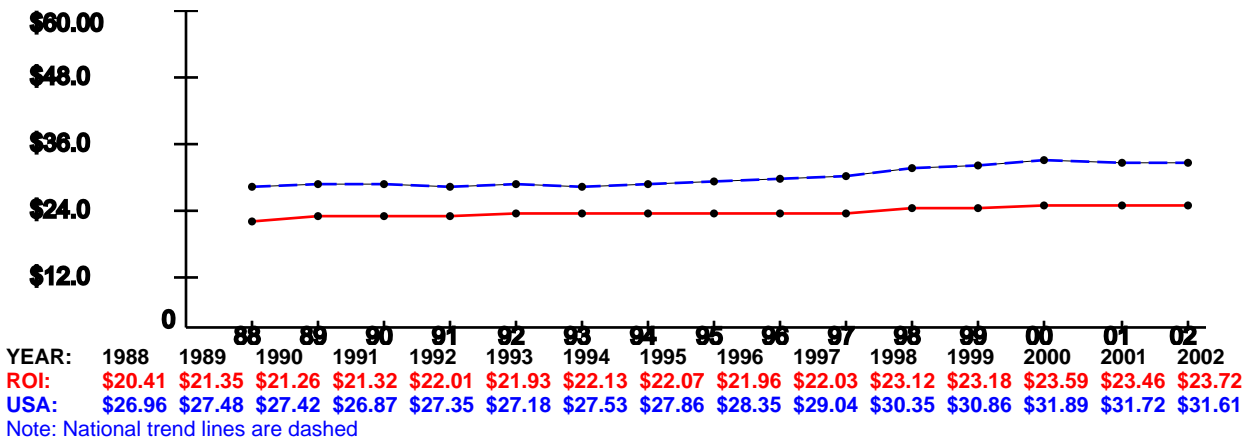
Employment Trend (1988-2002)



Unemployment Percentage Trend (1990-2003)



Per Capita Income x \$1,000 (1988-2002)



Hulman Regional APT AGS, IN

Demographics

The following tables provide a short description of the area near the installation/activity. Hulman Regional APT AGS is 77.8 miles from Indianapolis, IN, the nearest city with a population of 100,000 or more. The nearest metropolitan statistical area (MSA) is

MSA	Population
Terra Haute, IN MSA	149,192

The following entities comprise the military housing area (MHA):

County/City	Population
Clay	26556
Vigo	105848
Total	132,404

Child Care

This attribute captures the number of nationally accredited child-care centers within the local community: 2

Cost of Living

Cost of Living provides a relative measure of cost of living in the local community. General Schedule (GS) Locality Pay provides a relative scale to compare local salaries with government salaries and Basic Allowance for Housing (BAH) is an indicator of the local rental market. In-state tuition is an indicator of the support provided by the state for active duty family members to participate in higher-level education opportunities.

Median Household Income (US Avg \$41,994)	\$34,222	Basis: MSA
Median House Value (US Avg \$119,600)	\$70,800	
GS Locality Pay ("Rest of US" 10.9%)	10.9%	
O-3 with Dependents BAH Rate	\$ 766	
In-state Tuition for Family Member	No	
In-state Tuition Continues if Member PCSs Out of State	No	

Education

This attribute defines the population in local school districts and identifies capacity. The pupil/teacher ratio, graduation rate, percentage of certified teachers and composite SAT I/ACT scores provide a relative quality indicator of education. This attribute also attempts to give communities credit for the potential intellectual capital they provide.

NOTE: “MFR” means a Memorandum For Record is on file at the installation/activity/agency to document problems in obtaining the required information. Reasons for not being able to obtain information may be that the school district refused to provide the information or the school district does not use or track the information.

If the installation/activity/agency has incomplete information from the local school system in order to accurately compute a score in this area, the number of school districts reporting information will be captured in addition to the computed answer.

		Basis
School District(s) Capacity	25,000	2 of 2 districts
Students Enrolled	24,026	2 of 2 districts
Average Pupil/Teacher Ratio	14.2:1	2 of 2 districts
High School Students Enrolled	6,017	2 of 2 districts
Average High School Graduation Rate (US Avg 67.3%)	95.7%	2 of 2 districts
Average Composite SAT I Score (US Avg 1026)	985	2 of 2 districts
Average ACT Score (US Avg 20.8)	22	2 of 2 districts
Available Graduate/PhD Programs	3	
Available Colleges and/or Universities	4	
Available Vocational and/or Technical Schools	1	

Employment

Unemployment and job growth rates provide a relative merit of job availability in the local community. National rates from the Bureau of Labor Statistics are also provided.

The unemployment rates for the last five-years:

	1999	2000	2001	2002	2003
Local Data	4.4%	4.8%	5.6%	6.0%	5.6%
National	4.2%	4.0%	4.7%	5.8%	6.0%
Basis:	MSA	MSA	MSA	MSA	MSA

The annual job growth rate for the last five-years:

	1999	2000	2001	2002	2003
Local Data	-.2%	.6%	-1.9%	1.0%	2.7%
National	1.5%	2.4%	.03%	-.31%	.86%
Basis:	MSA	MSA	MSA	MSA	MSA

Housing

This attribute provides an indication of availability of housing, both sales and rental, in the local community. Note: according to the 2000 Census, Vacant Sale and Vacant Rental Units do not equal Total Vacant Housing Units; Total Vacant Housing Units may also include units that are vacant but not on the market for sale or rent.

Total Vacant Housing Units	5,729	Basis: MSA
Vacant Sale Units	1,120	
Vacant Rental Units	2,043	

Medical Providers

This attribute provides an indicator of availability of medical care for military and DoD civilians in the local community. The table reflects the raw number of physicians/beds and ratio of physicians/beds to population.

	# Physicians	# Beds	Population	
Local Community	305	579	149,192	Basis: MSA
Ratio	1:489	1:258		
National Ratio (2003)	1:421.2	1:373.7		

Safety/Crime

The local community's Uniform Crime Reports (UCR) Index for 2002 per 100,000 people and the national UCR based on information from the Federal Bureau of Investigation (FBI) for 2002:

Local UCR	3,750.0	Basis: state
National UCR	4,118.8	

Transportation

Distance to an airport shows convenience and availability of airline transportation. Public transportation shows potential for members and DoD civilians to use it to commute to/from work under normal circumstances and for leisure.

Distance from Hulman Regional APT AGS to nearest commercial airport: 70.0 miles
Is Hulman Regional APT AGS served by regularly scheduled public transportation? No

Utilities

This attribute identifies a local community's water and sewer systems' ability to receive 1,000 additional people.

Does the local community's water system have the ability to meet an expanded need of an additional 1,000 people moving in the local community? Yes

Does the local community's sewer system have the ability to meet an expanded need of an additional 1,000 people moving in the local community? Yes

Fort Wayne IAP AGS, IN

Demographics

The following tables provide a short description of the area near the installation/activity. Fort Wayne IAP AGS is within Fort Wayne, IN, the nearest city with a population of 100,000 or more. The nearest metropolitan statistical area (MSA) is

MSA	Population
Fort Wayne, IN MSA	502,141

The following entities comprise the military housing area (MHA):

County/City	Population
Allen	331849
De Kalb	40285
Total	372,134

Child Care

This attribute captures the number of nationally accredited child-care centers within the local community: 28

Cost of Living

Cost of Living provides a relative measure of cost of living in the local community. General Schedule (GS) Locality Pay provides a relative scale to compare local salaries with government salaries and Basic Allowance for Housing (BAH) is an indicator of the local rental market. In-state tuition is an indicator of the support provided by the state for active duty family members to participate in higher-level education opportunities.

Median Household Income (US Avg \$41,994)	\$42,817	Basis: MSA
Median House Value (US Avg \$119,600)	\$88,200	
GS Locality Pay ("Rest of US" 10.9%)	10.9%	
O-3 with Dependents BAH Rate	\$ 871	
In-state Tuition for Family Member	No	
In-state Tuition Continues if Member PCSs Out of State	No	

Education

This attribute defines the population in local school districts and identifies capacity. The pupil/teacher ratio, graduation rate, percentage of certified teachers and composite SAT I/ACT scores provide a relative quality indicator of education. This attribute also attempts to give communities credit for the potential intellectual capital they provide.

NOTE: "MFR" means a Memorandum For Record is on file at the installation/activity/agency to document problems in obtaining the required information. Reasons for not being able to obtain information may be that the school district refused to provide the information or the school district does not use or track the information.

If the installation/activity/agency has incomplete information from the local school system in order to accurately compute a score in this area, the number of school districts reporting information will be captured in addition to the computed answer.

		Basis
School District(s) Capacity	92,708	7 of 7 districts
Students Enrolled	64,665	7 of 7 districts
Average Pupil/Teacher Ratio	16.8:1	7 of 7 districts
High School Students Enrolled	16,851	5 of 5 districts
Average High School Graduation Rate (US Avg 67.3%)	91.9%	5 of 5 districts
Average Composite SAT I Score (US Avg 1026)	1001	5 of 5 districts
Average ACT Score (US Avg 20.8)	22	5 of 5 districts
Available Graduate/PhD Programs	6	
Available Colleges and/or Universities	13	
Available Vocational and/or Technical Schools	15	

Employment

Unemployment and job growth rates provide a relative merit of job availability in the local community. National rates from the Bureau of Labor Statistics are also provided.

The unemployment rates for the last five-years:

	1999	2000	2001	2002	2003
Local Data	2.9%	3.1%	4.8%	5.2%	5.5%
National	4.2%	4.0%	4.7%	5.8%	6.0%
Basis:	MSA	MSA	MSA	MSA	MSA

The annual job growth rate for the last five-years:

	1999	2000	2001	2002	2003
Local Data	-1.3%	-.2%	-1.2%	.5%	-.9%
National	1.5%	2.4%	.03%	-.31%	.86%
Basis:	MSA	MSA	MSA	MSA	MSA

Housing

This attribute provides an indication of availability of housing, both sales and rental, in the local community. Note: according to the 2000 Census, Vacant Sale and Vacant Rental Units do not equal Total Vacant Housing Units; Total Vacant Housing Units may also include units that are vacant but not on the market for sale or rent.

Total Vacant Housing Units	14,185	Basis: MSA
Vacant Sale Units	3,048	
Vacant Rental Units	5,753	

Medical Providers

This attribute provides an indicator of availability of medical care for military and DoD civilians in the local community. The table reflects the raw number of physicians/beds and ratio of physicians/beds to population.

	# Physicians	# Beds	Population	
Local Community	987	1,579	502,141	Basis: MSA
Ratio	1:509	1:318		
National Ratio (2003)	1:421.2	1:373.7		

Safety/Crime

The local community's Uniform Crime Reports (UCR) Index for 2002 per 100,000 people and the national UCR based on information from the Federal Bureau of Investigation (FBI) for 2002:

Local UCR	3,572.0	Basis: MSA
National UCR	4,118.8	

Transportation

Distance to an airport shows convenience and availability of airline transportation. Public transportation shows potential for members and DoD civilians to use it to commute to/from work under normal circumstances and for leisure.

Distance from Fort Wayne IAP AGS to nearest commercial airport: .5 miles

Is Fort Wayne IAP AGS served by regularly scheduled public transportation? No

Utilities

This attribute identifies a local community's water and sewer systems' ability to receive 1,000 additional people.

Does the local community's water system have the ability to meet an expanded need of an additional 1,000 people moving in the local community? Yes

Does the local community's sewer system have the ability to meet an expanded need of an additional 1,000 people moving in the local community? Yes

Criterion 7 Analysis Sheet--Data Reported from Criterion 7 Report Provided by SAF/IEB

SCENARIO #		139	
Data Point	Base Name	Hulman Regional APT AGS	Fort Wayne IAP AGS
Demographics	State	IN	IN
	Miles to Nearest City	77.8	0
	Nearest City	Indianapolis, IN	Fort Wayne, IN
	MSA Name	Terra Haute, IN MSA	Fort Wayne, IN MSA
	MSA Population	149,192	502,141
	Population of MHA	132,404	372,134
Child Care	Number of accredited child-care centers	2	28
Cost of Living	Median Household Income (US Avg \$41,994)	34,222	42,817
	Median House Value (US Avg \$119,600)	70,800	88,200
	GS Locality Pay ("Rest of US" 10.9%)	10.9	10.9
	O-3 with Dependents BAH Rate	766	871
	In-state Tuition for Family Member	No	No
	In-state Tuition Continues if PCS Out of State	No	No
Education	School District(s) Capacity	25,000	92,708
	Students Enrolled	24,026	64,665
	Average Pupil/Teacher Ratio	14.2	16.8
	High School Students Enrolled	6,017	16,851
	Average Composite SAT I Score (US Avg 1026)	985	1001
	Average ACT Score (US Avg 20.8)	22.2	21.7
	Average High School Grad Rate (US Avg 67.3%)	95.7	91.9
	Available Graduate/PhD Programs	3	6
	Available Colleges and/or Universities	4	13
Employment	Available Vocational and/or Technical Schools	1	15
	1999 Unemployment Rate (National Avg: 4.2%)	4.4	2.9
	2000 Unemployment Rate (National Avg: 4.0%)	4.8	3.1
	2001 Unemployment Rate (National Avg 4.7%)	5.6	4.8
	2002 Unemployment Rate (National Avg: 5.8%)	6.0	5.2
	2003 Unemployment Rate (National Avg 6.0%)	5.6	5.5
	1999 Job Growth Rate (National Avg: 1.5%)	-0.2	-1.3
	2000 Job Growth Rate (National Avg: 2.4%)	0.6	-0.2
	2001 Job Growth Rate (National Avg: .03%)	-1.9	-1.2
Housing	2002 Job Growth Rate (National Avg: -.31%)	1.0	0.5
	2003 Job Growth Rate (National Avg: .86%)	2.7	-0.9
	Total Vacant Housing Units	5,729	14,185
Medical Providers	Vacant Rental Units	2,043	5,753
	Vacant Sale Units	1,120	3,048
	Local Community--Number of Physicians	305	987
Safety/Crime	Local Community--Number of Beds	579	1,579
	Ratio--Physicians (National Avg--1:421.2)	489.2	508.8
	Ratio--Beds (National Avg--1:373.7)	257.7	318.0
Transportation	Uniform Crime Reports (UCR) Index (National UCR 4,118.8)	3750.0	3572.0
	Distance to nearest commercial airport	70.0	0.5
Utilities	Served by regularly scheduled public transportation	No	No
	Can water system expand to support 1K new people?	Yes	Yes
	Can sewer system expand to support 1K new people?	Yes	Yes

Overall Comments: A review of community attributes indicates no issues regarding the ability of the infrastructure of the communities to support missions, forces and personnel

Demographics: The Hulman Regional APT AGS is 77.8 miles from a nearest city of 100K or greater and has a MSA population of 149K; the receiving community has a MSA population of 502K

Child Care: Both communities have nationally accredited child care facilities

Cost of Living: Both communities have lower median house values than the US average; the receiving community has a higher median household income, house value, and BAH rate than Hulman

Education: Data indicates that both communities offer ACT scores and HS graduation rates higher than the US average; but both communities have SAT scores lower than the US average

Employment: Data indicates that although both communities have unemployment rates that grew from 1999 to 2003, their 2003 rates are less than the US average

Housing: Data indicates that the receiving community has a greater number of vacant sale/rental units than Hulman

Medical Providers: Data indicates that both communities offer lower bed space ratios but higher physician ratios than US averages

Safety/Crime: Data indicates that both communities have a lower crime report index than the US average

Transportation: Data indicates Hulman is 70 miles from a commercial airport; neither communities offer regularly scheduled public transportation

Utilities: Both communities can expand to support increases in water and sewer usage for 1K new people

Summary of Scenario Environmental Impacts - Criterion 8

Scenario ID#: S139

Brief Description: Close Hulman Regional APT AGS. The 181st Fighter Wing (ANG) will inactivate. The wing's F-16 Block 30 aircraft will be distributed to the 122d Fighter Wing (ANG), Fort Wayne IAP AGS, Indiana (9 PAA) and retirement (6 PAA). The wing's ECS elements will remain as an enclave.

<u>General Environmental Impacts</u>	
Environmental Resource Area	Hulman
Air Quality	No impact
Cultural/ Archeological/ Tribal Resources	No impact
Dredging	No impact
Land Use Constraints/ Sensitive Resource Areas	No impact
Marine Mammals/ Marine Resources/ Marine Sanctuaries	No impact
Noise	No increase in off-base noise is expected.
Threatened & Endangered Species/ Critical Habitat	No impact
Waste Management	No impact
Water Resources	No impact
Wetlands	No impact

<u>Impacts of Costs</u>	
	Hulman
Environmental Restoration	DERA money spent through FY03 (\$K):1,815 Estimated CTC (\$K): 504 DO NOT ENTER IN COBRA
Waste Management	No impact
Environmental Compliance	FY06 NEPA cost: \$100K FY06 Clean Fuel Storage Tanks/Remove Sludge/Hush House: \$200K

<u>General Environmental Impacts</u>	
Environmental Resource Area	Fort Wayne
Air Quality	An initial conformity analysis shows that a conformity determination is not required.
Cultural/ Archeological/ Tribal Resources	No impact
Dredging	No impact
Land Use Constraints/ Sensitive Resource Areas	The scenario may require building on constrained acreage.
Marine Mammals/ Marine Resources/ Marine Sanctuaries	No impact
Noise	Less than a 3dB general increase in contours can be expected. The AICUZ reflects the current mission, local land use, and current noise levels. 1,667 acres off-base within the noise contours are zoned by the local community. 172 of these acres are residentially zoned. The community has not purchased easements for area surrounding the installation.
Threatened& Endangered Species/ Critical Habitat	No T&E species or critical habitats exist. No impact to T&E species is expected.
Waste Management	All 3 scenarios increase waste disposal associated with the training assets.
Water Resources	No impact
Wetlands	Wetlands do not currently restrict operations. Additional operations may impact wetlands, which may restrict operations.

<u>Impacts of Costs</u>	
	Fort Wayne
Environmental Restoration	DERA money spent through FY03 (\$K): 1,509 Estimated CTC (\$K): 0 DO NOT ENTER IN COBRA
Waste Management	No impact
Environmental Compliance	FY06 NEPA cost: \$281K FY07 Air Conformity Analysis \$50K

SCENARIO CHECKLIST

USAF 0040 (139)

DOCUMENT LISTING	FILED BY	REVIEWED BY
General Counsel Legal Sufficiency Letter (Section 1)	MB	JFC
Candidate Recommendation Folder CD (Section 1)	MB	JFC
Transmittal Letter (Section 2)	MB	JFC
Quad Chart (Section 3)	MB	JFC
Candidate Recommendation (Section 4)	MB	JFC
Capacity Analysis (Section 5)	MB	JFC
Military Value Analysis (Section 5)	MB	JFC
Force Structure (Classified)	On file with OSD	On file with OSD
COBRA Reports (Section 5)	MB	JFC
Economic Impact Report (Criterion 6) (Section 6)	MB	JFC
Installation Profile (Criterion 7) (Section 6)	MB	JFC
Environmental Impact (Criterion 8) (Section 6)	MB	JFC

MEMORANDUM FOR SAF/IEB

FEB 11 2005

SUBJECT: Candidate Recommendation Package

I reviewed the documents listed above and recommend IEB and XP-BRAC approve this Candidate Recommendation (Section 2) for transmittal to the Office of the Secretary of Defense. Attachments are as listed above.



CHRISTOPHER A. KAPELLAS, Colonel, USAF
Chief, Air Force Base Realignment and Closure Division