

BASE FROM TOPOGRAPHIC MAPS
OF THE U.S. SCALE 1/250,000

DAYTONA BEACH
FT. PIERCE
ORLANDO

AERORADIOACTIVITY MAP (ARMS-II)

ORLANDO AREA, FLORIDA

RADIOACTIVITY LEVELS IN HUNDREDS OF COUNTS PER SECOND NORMALIZED TO 500 FT ABOVE GROUND
SURVEYED BY EG&G, INC., WITH AIRCRAFT N702B
FEBRUARY 11 - 21, 1963

SUGGESTED CONVERSION FACTOR
25 counts/sec at 500 ft = $1 \mu r/hr$ at 3 ft

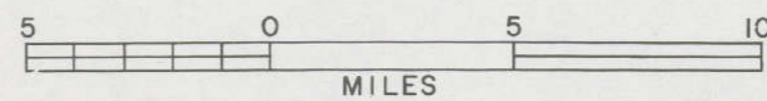
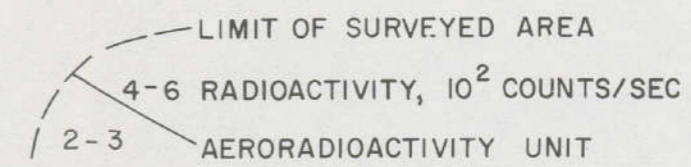
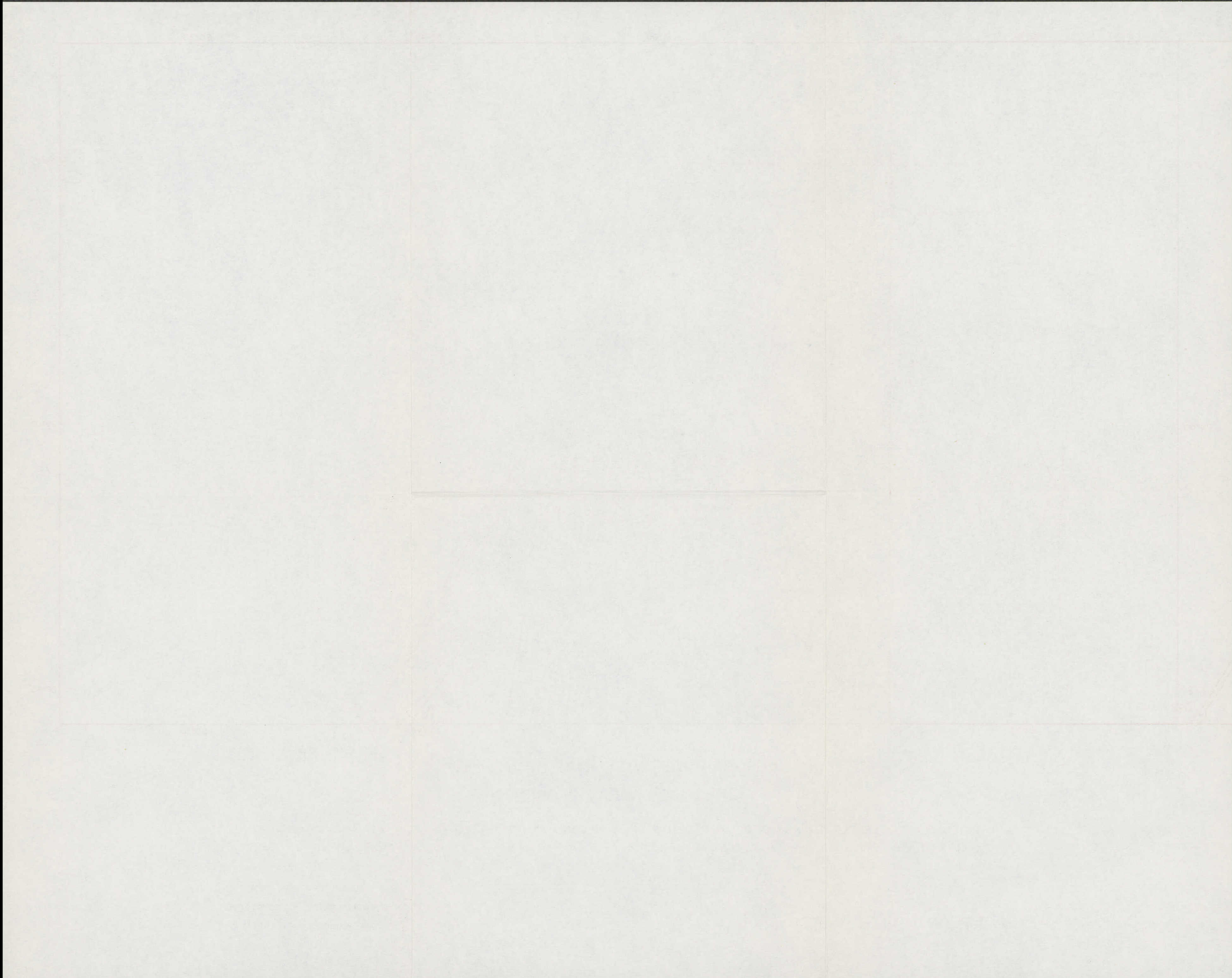
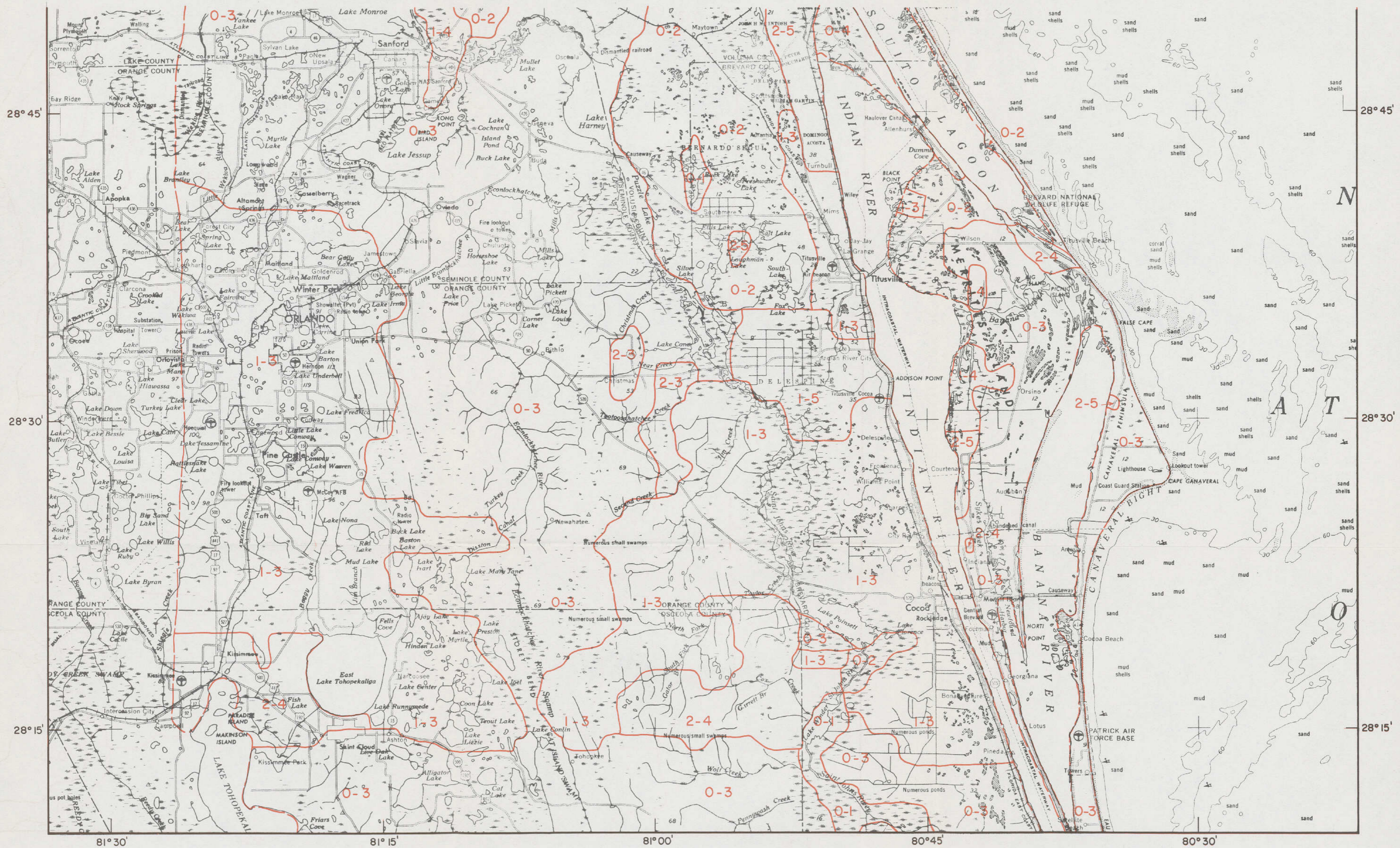


PLATE I NORTH PART







BASE FROM TOPOGRAPHIC MAPS
OF THE U.S. SCALE 1/250,000

DAYTONA BEACH
FT. PIERCE
ORLANDO

AERORADIOACTIVITY MAP (ARMS-II) ORLANDO AREA, FLORIDA

RADIOACTIVITY LEVELS IN HUNDREDS OF COUNTS PER SECOND NORMALIZED TO 500 FT ABOVE GROUND
SURVEYED BY EG&G, INC., WITH AIRCRAFT N702B
FEBRUARY 11 - 21, 1963

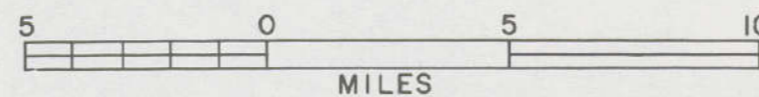
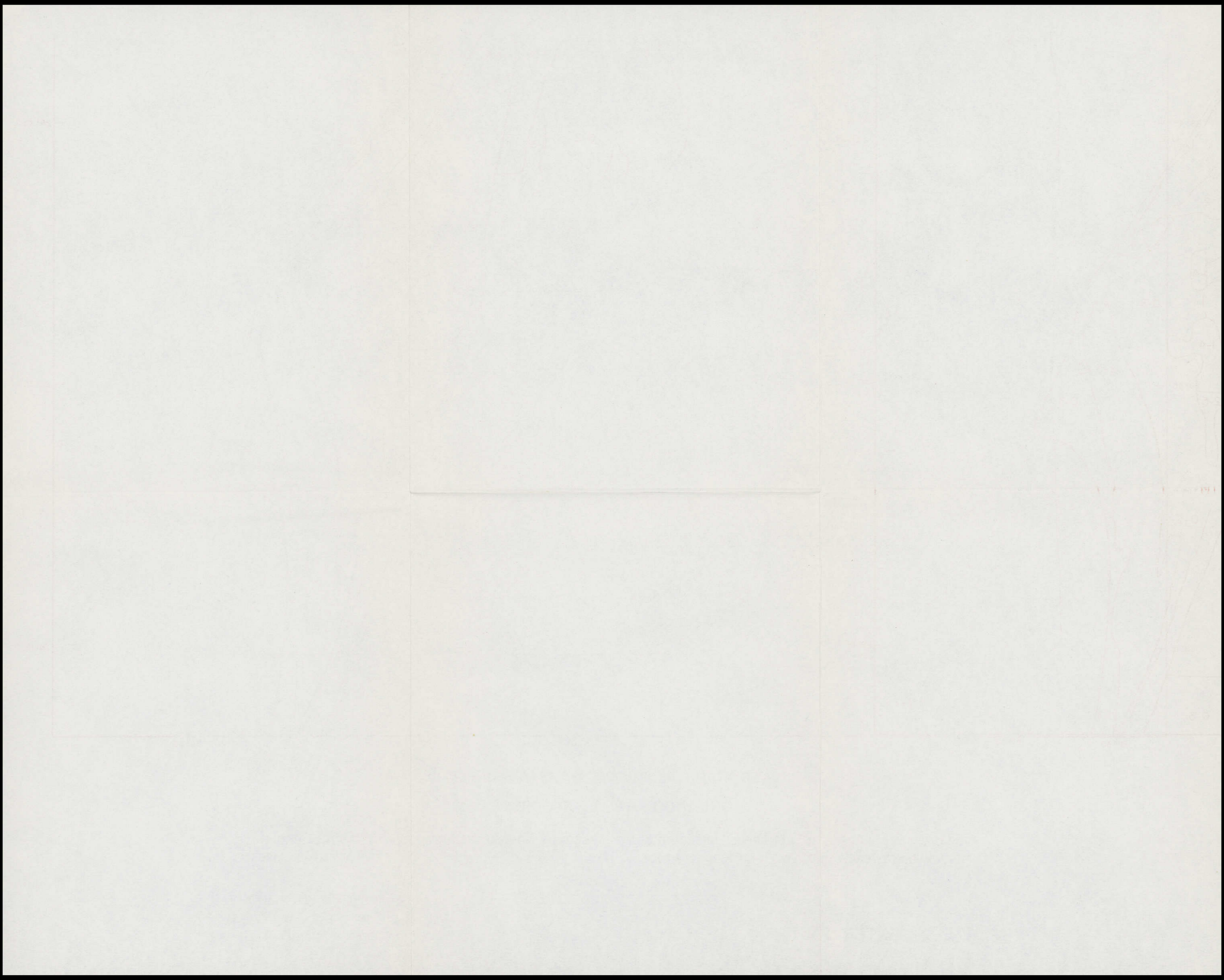
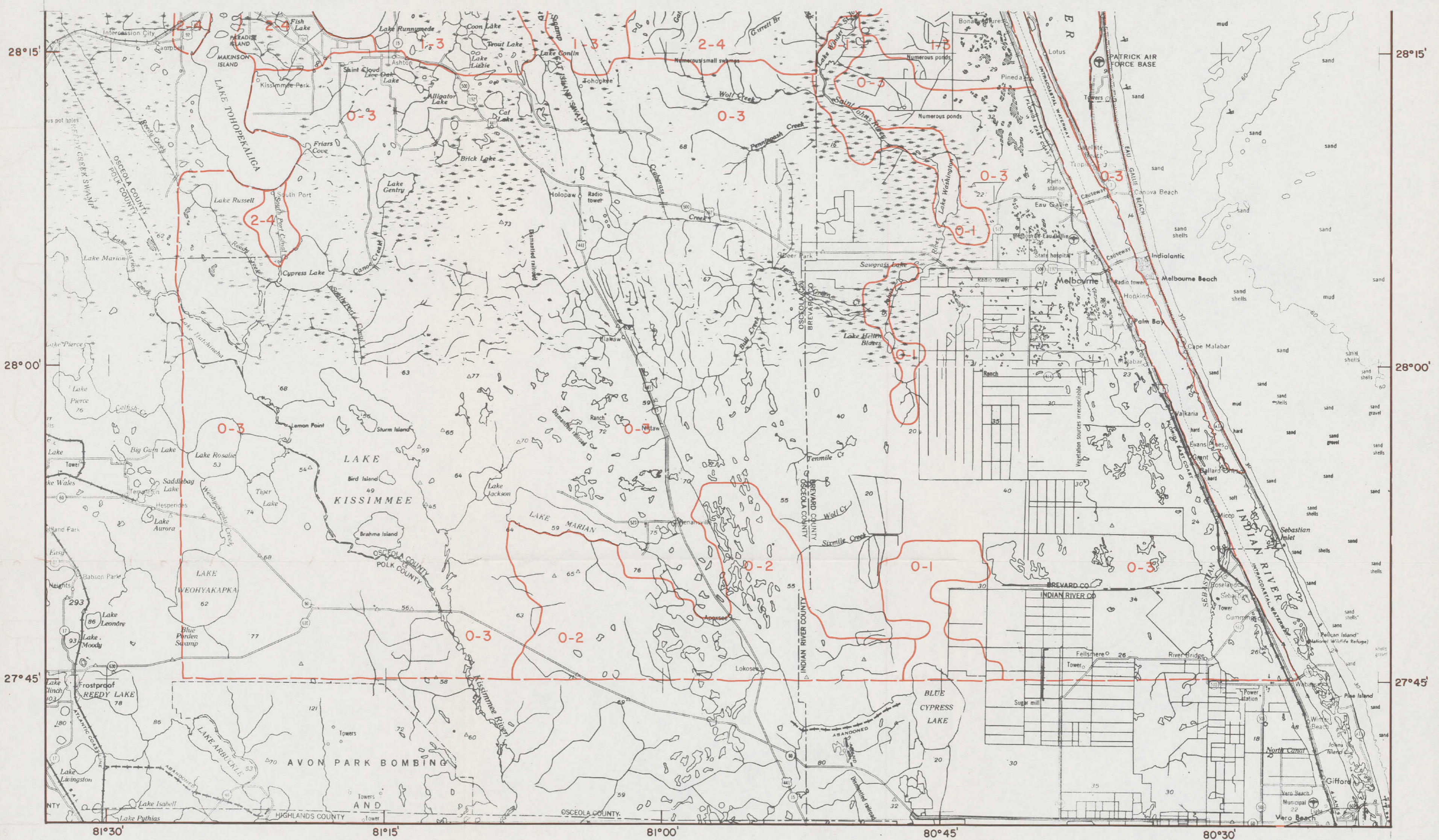


PLATE 2 CENTER PART

SUGGESTED CONVERSION FACTOR
25 counts/sec at 500 ft = $1 \mu r/hr$ at 3 ft

— LIMIT OF SURVEYED AREA
4-6 RADIOACTIVITY, 10^2 COUNTS/SEC
2-3 AERORADIOACTIVITY UNIT





BASE FROM TOPOGRAPHIC MAPS
OF THE U.S. SCALE 1/250,000

DAYTONA BEACH
FT. PIERCE
ORLANDO

AERORADIOACTIVITY MAP (ARMS-II) ORLANDO AREA, FLORIDA

SUGGESTED CONVERSION FACTOR
25 counts/sec at 500 ft = $1\mu r/hr$ at 3 ft

RADIOACTIVITY LEVELS IN HUNDREDS OF COUNTS PER SECOND NORMALIZED TO 500 FT ABOVE GROUND
SURVEYED BY EG&G, INC., WITH AIRCRAFT N702B
FEBRUARY 11 - 21, 1963

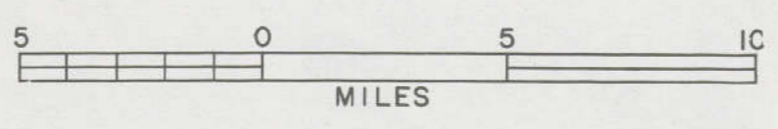


PLATE 3 SOUTH PART

- LIMIT OF SURVEYED AREA
- 4-6 RADIOACTIVITY, 10^2 COUNTS/SEC
- 2-3 AERORADIOACTIVITY UNIT

