

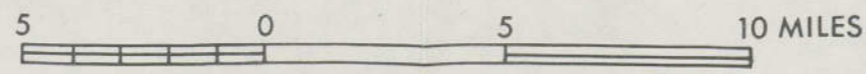
AERORADIOACTIVITY MAP

ARMS II GALVESTON AREA, TEXAS

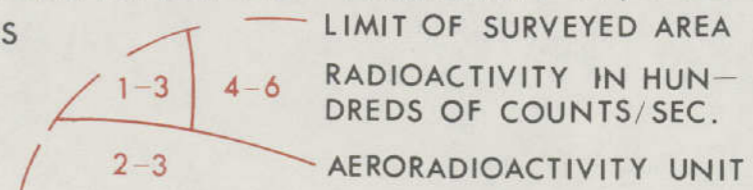
RADIOACTIVITY LEVELS IN HUNDREDS OF COUNTS PER SECOND NORMALIZED TO 500 FT ABOVE GROUND
 SURVEYED BY EG & G, INC., WITH AIRCRAFT N702B. JANUARY 26 - FEBRUARY 17, 1962

BASE FROM TOPOGRAPHIC MAPS OF THE U.S.
 SCALE 1/250,000 SHEETS: BAY CITY
 BEAUMONT
 HOUSTON

PLATE 1 EAST PART

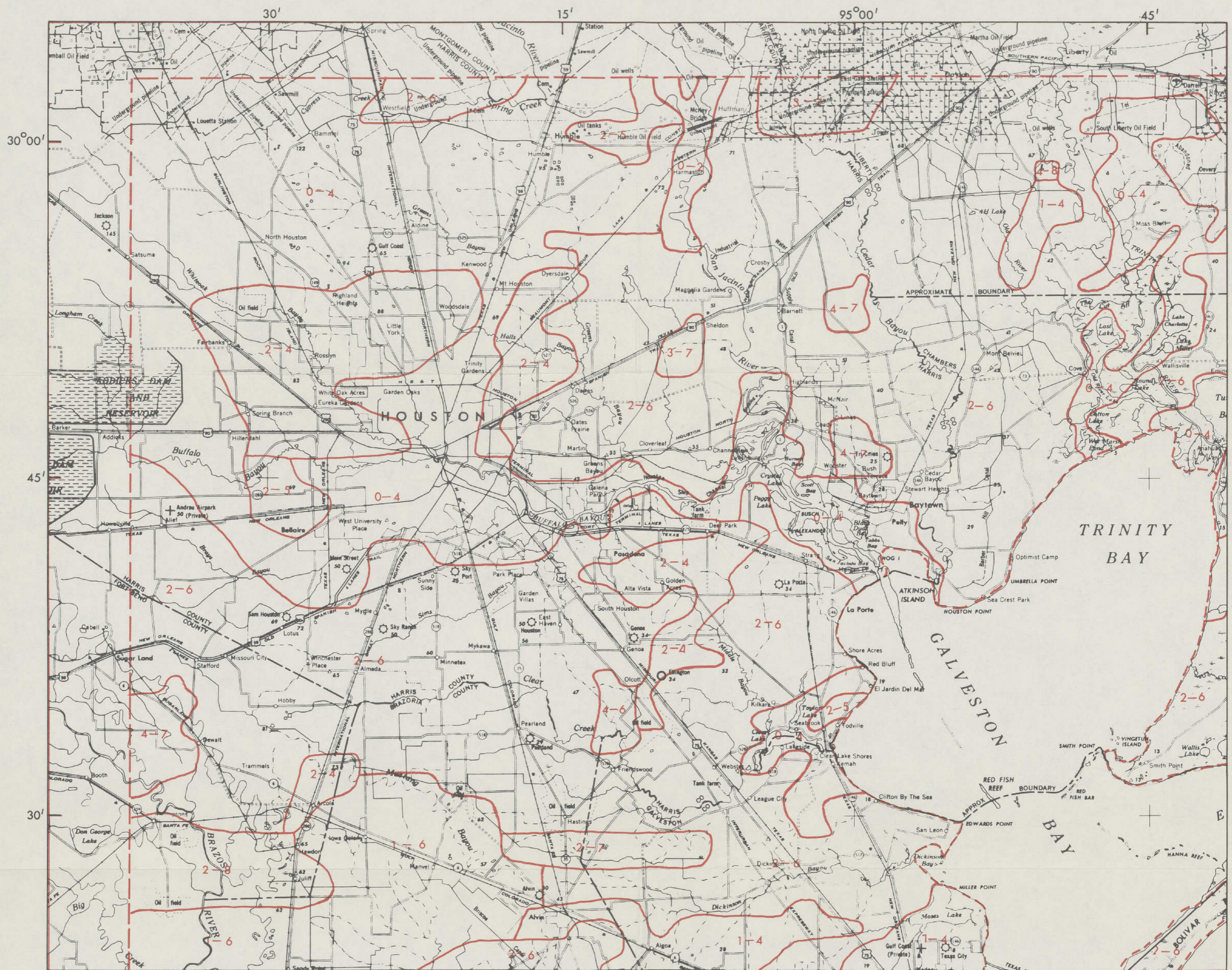


SUGGESTED CONVERSION FACTOR
 25 counts/sec at 500 ft = 1 μ r/hr at 3 ft





THE UNIVERSITY OF CHICAGO
LIBRARY
1207 EAST 58TH STREET
CHICAGO, ILLINOIS 60637
TEL: 773-936-3200
WWW.CHICAGO.LIBRARY.EDU



AERORADIOACTIVITY MAP

ARMS II GALVESTON AREA, TEXAS

RADIOACTIVITY LEVELS IN HUNDREDS OF COUNTS PER SECOND NORMALIZED TO 500 FT ABOVE GROUND
 SURVEYED BY EG&G, INC., WITH AIRCRAFT N702B. JANUARY 26 - FEBRUARY 17, 1962

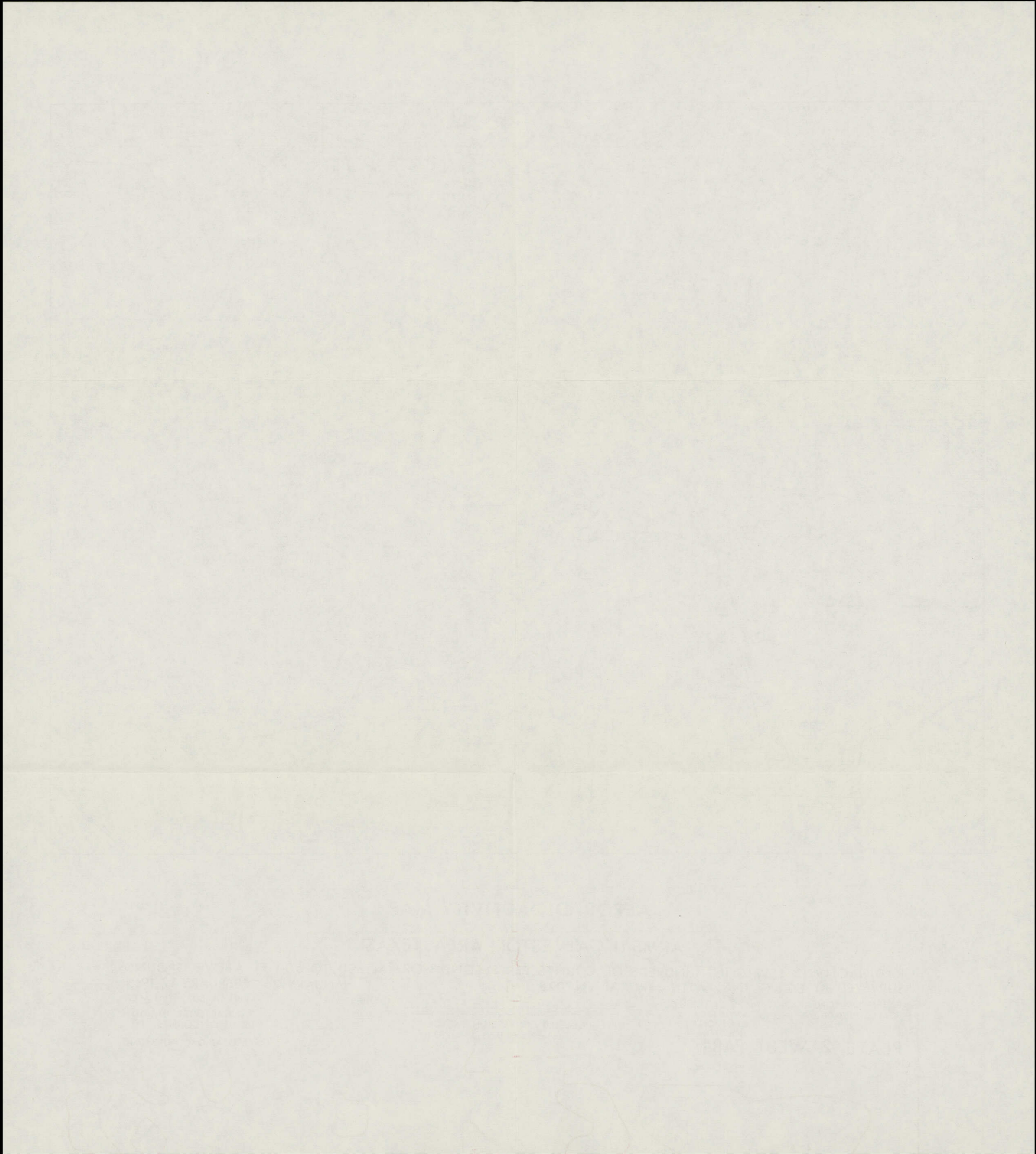
BASE FROM TOPOGRAPHIC MAPS OF THE U.S.
 SCALE 1/250,000 SHEETS: BAY CITY
 BEAUMONT
 HOUSTON

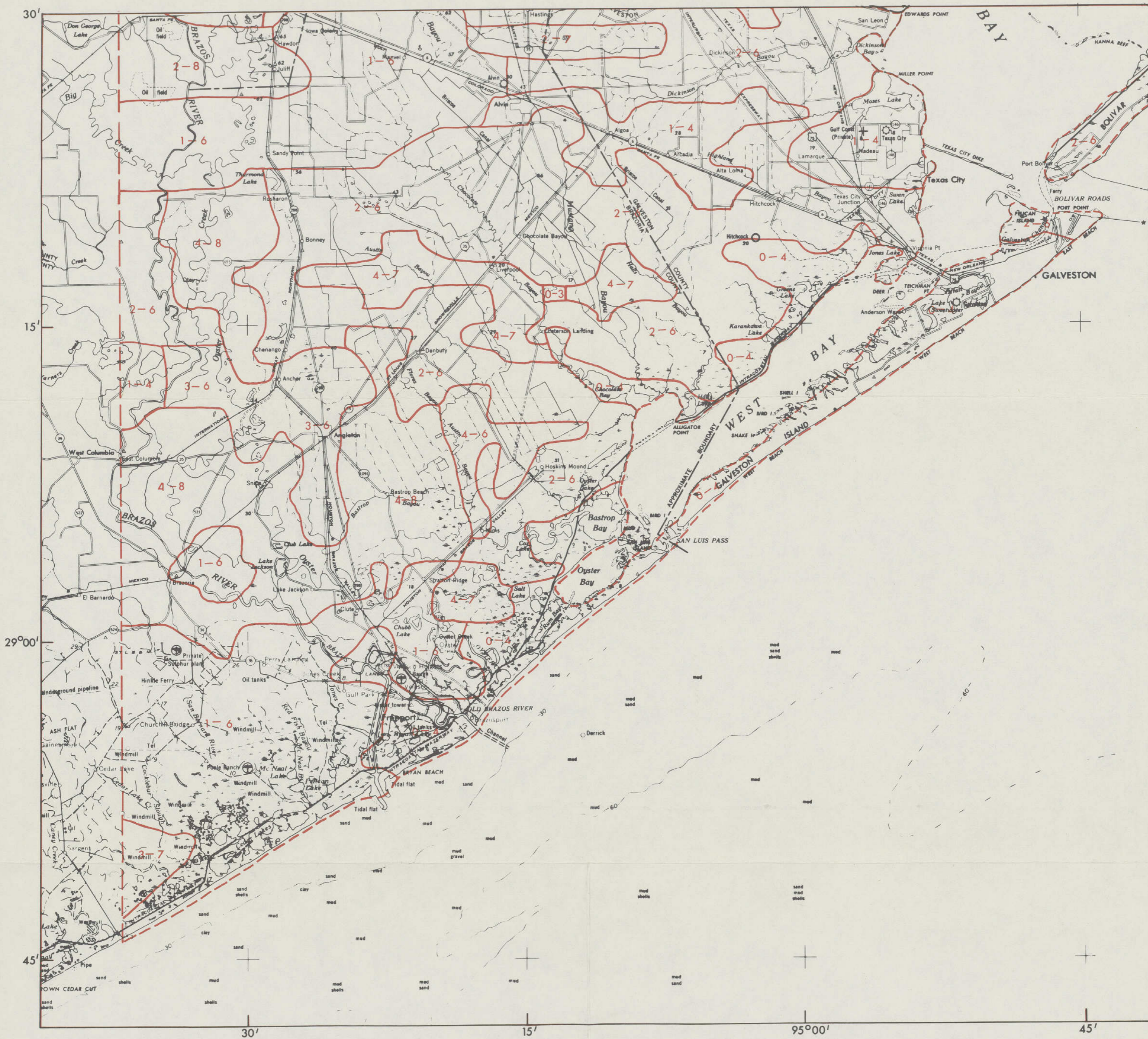
PLATE 2 WEST PART

5 0 5 10 MILES

SUGGESTED CONVERSION FACTOR
 25 counts/sec at 500 ft = 1 μ r/hr at 3 ft

— LIMIT OF SURVEYED AREA
 1-3 4-6 RADIOACTIVITY IN HUN-
 DREDS OF COUNTS/SEC.
 2-3 AERORADIOACTIVITY UNIT





AERORADIOACTIVITY MAP

ARMS II GALVESTON AREA, TEXAS

RADIOACTIVITY LEVELS IN HUNDREDS OF COUNTS PER SECOND NORMALIZED TO 500 FT ABOVE GROUND
 SURVEYED BY EG & G, INC., WITH AIRCRAFT N702B. JANUARY 26 - FEBRUARY 17, 1962

BASE FROM TOPOGRAPHIC MAPS OF THE U.S.
 SCALE 1/250,000 SHEETS: BAY CITY
 BEAUMONT
 HOUSTON

5 0 5 10 MILES

SUGGESTED CONVERSION FACTOR
 25 counts/sec at 500 ft = 1 μ r/hr at 3 ft

— LIMIT OF SURVEYED AREA
 1-3 4-6 RADIOACTIVITY IN HUNDREDS OF COUNTS/SEC.
 2-3 AERORADIOACTIVITY UNIT

PLATE 3 SOUTH PART

