

COMPANY BENDIX FIELD ENGINEER, INC CORPORATION

DRILLING MUD 6" Bit Size

WELL C DATE DEC. 4, 1978

Pressure Date: GROUND LEVEL

FIELD MISSOULA/BITTERROOT

Log Measured From: Other Services

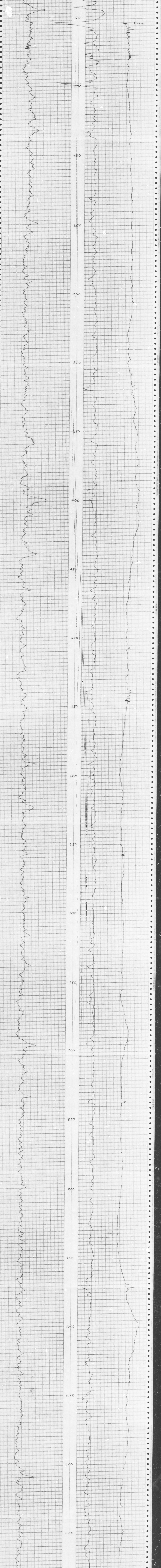
COUNTY RAVALLI STATE MONTANA

Table with columns: Sec. 32, Twp. 10N, Rgn. 26W, Elev. 7110'

Table with columns: Run No., Depth, Diameter, Measured, Offset

Table with columns: K Factor, Error, Logging Speed, Push, Rate, Direction

Table with columns: Elev., S.P., Scale, Temp., Remarks



1200

1250

1300

1350

1400

1450

1500

1550

1600

1650

1700

Gamma Ray 100 CRS

Caliper in.

RD 1735

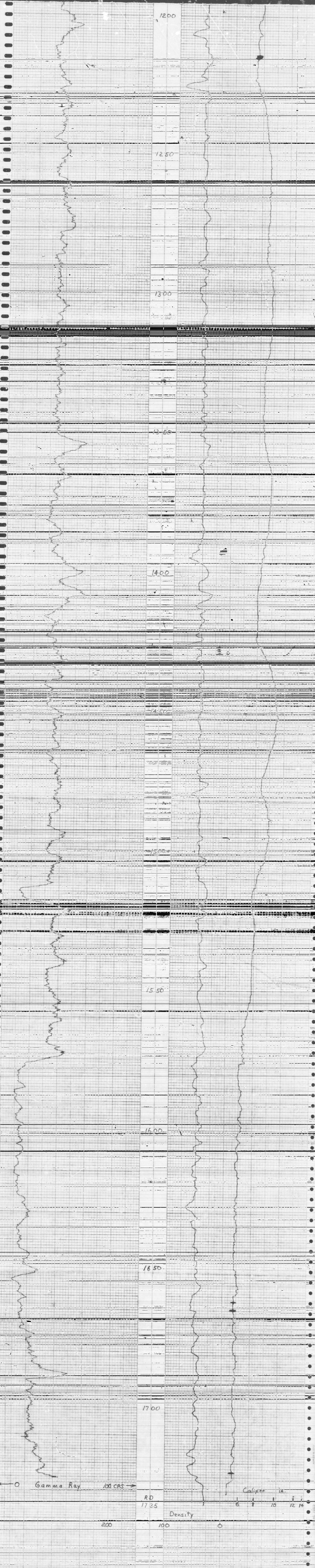
Density

200

100

0

6 8 10 12 14



Wooddell Logging, Inc.

MATTOON, ILLINOIS

MINERAL LOG

COMPANY BENDIX FIELD ENGINEERING CORPORATION

WELL 6 DATE Dec. 1978

FIELD MISSOURI/BITTERROOT COUNTY RAVALLI STATE MONTANA

Location

Site 32 Twp 10N Rng 23W Elev 7172

Job Title: Sign Finish
 Logged by: DENNIS FATHAUER
 Checked by: N. ABRAMUK

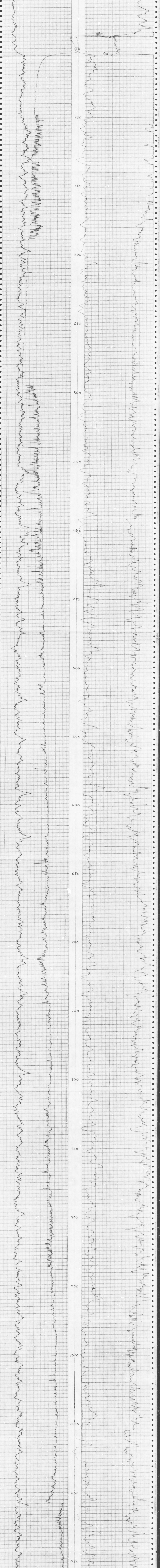
Driller: K. DRILLING
 Casing: 6"
 Type Fluid: MUD
 Bit Size: 6"

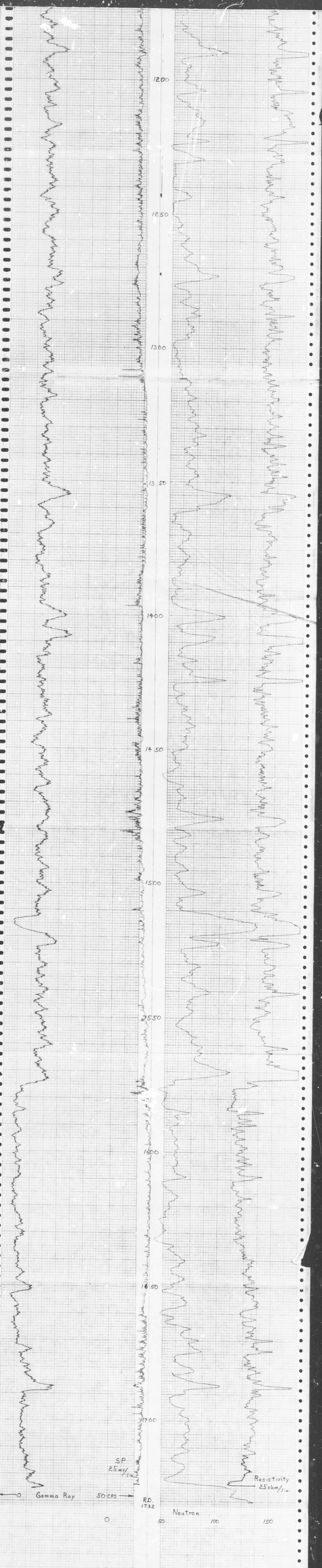
Ground Level: Elev. 7160
 Ft. Above Perm. Datum

Drilling Method: Free
 Other Services:

Run No.	Gamma	Density	Neutron	Caliper	Run in	SP	Slur	Famp	Remarks
1	1732				1732	1732			
2					0	0			
3					25	25			
4					10	10			
5					20	20			
6					1651	1651			

Gamma Ray Log
 Vertical Scale Feet
 Horizontal Scale
 K Factor
 Dead Time
 Logging Speed F.P.M.
 Pulse Rate
 Bit Size in.
 Type
 Drilling Rate
 Spacing
 Casing
 AL
 M





HOLE MB-6

BFEC PROJ # 20772110

LOG REDUCTION PROJ # 78005

AREA REMARKS: MISSOULA BITTERROOT & NAT GAM CONC.

