

## RC Transformation in Georgia

**Recommendation:** Close the United States Army Reserve Center, Columbus, Georgia and relocate and consolidate those units together with Army Reserve Units currently on Fort Benning into a new United States Army Reserve Center on Fort Benning, Georgia.

**Justification:** This recommendation transforms Reserve Component facilities in the State of Georgia. The implementation of this recommendation will enhance military value, improve homeland defense capability, greatly improve training and deployment capability, create significant efficiencies and cost savings, and is consistent with the Army's force structure plans and Army transformational objectives.

This recommendation is the result of a state-wide analysis of Reserve Component installations and facilities conducted by a team of functional experts from Headquarters, Department of the Army, the Office of the State Adjutant General, and the Army Reserve Regional Readiness Command.

This recommendation closes one United States Army Reserve Center in Columbus, GA and re-locates units together with United States Army Reserve units currently on Fort Benning into a new United States Army Reserve Center on Fort Benning, GA. This recommendation reduces military manpower and associated costs for maintaining existing facilities by reducing the number of separate DoD installations and by relocating a U.S. Army Reserve Center to an existing base. This recommendation supports the recommendation to close Fort Gillem by providing a relocation site for the vehicles and equipment stored at the Army Reserve Equipment Concentration Site (ECS).

This recommendation considered feasible locations within the demographic and geographic areas of the closing facilities and affected units. The site selected was determined as the best location because it optimizes the Reserve Components ability to recruit and retain Reserve Component soldiers, and to train and mobilize units impacted by this recommendation.

This recommendation provides the opportunity for other Local, State, or Federal organizations to partner with the Reserve Components to enhance Homeland Security and Homeland Defense at a reduced cost to those agencies.

Although not captured in the COBRA analysis, this recommendation avoids an estimated \$52.8M in mission facility renovation costs and procurement avoidances associated with meeting AT/FP construction standards and altering existing facilities to meet unit training and communications requirements. Consideration of these avoided costs would reduce costs and increase the net savings to the Department of Defense in the 6-year BRAC implementation period, and in the 20-year period used to calculate NPV.

**Payback:** The total estimated one-time cost to the Department of Defense to implement this recommendation is \$21.4M. The net of all costs and savings to the Department of Defense during the implementation period is a cost of \$3.5M. Annual recurring savings

to the Department after implementation are \$5.0M with a payback expected in 5 years. The net present value of the costs and savings to the Department over 20 years is a savings of \$44.8M.

**Economic Impact on Communities:** Assuming no economic recovery, this recommendation could result in a maximum potential reduction of 103 jobs (65 direct and 38 indirect jobs) over the 2006 – 2011 period in the Columbus, GA-AL metropolitan statistical area, which is less than 0.1 percent of economic area employment. The aggregate economic impact of all recommended actions on this economic region of influence was considered and is at Appendix B of Volume I.

**Community Infrastructure Assessment:** A review of the community attributes revealed no significant issues regarding the ability of the infrastructure of the communities to support missions, forces, and personnel. There are no known community infrastructure impediments to implementation of all recommendations affecting the installations in this recommendation.

**Environmental Impact:** This recommendation may impact air quality and water quality at Fort Benning. Due to the increase in personnel and new construction, an Air Conformity Analysis will be required. Significant mitigation measures to limit releases may be required to reduce impacts to water quality and achieve US EPA water quality standards. This recommendation has no impact on cultural, archeological, or tribal resources; dredging; land use constraints or sensitive resource areas; marine mammals, resources, or sanctuaries; noise; threatened and endangered species or critical habitat; waste management; or wetlands. This recommendation will require spending approximately \$0.008 for waste management and/or environmental compliance activities. These costs were included in the payback calculation. This recommendation does not otherwise impact the costs of environmental restoration, waste management, and environmental compliance activities. Installation has no jurisdictional wetlands. The aggregate environmental impact of all recommended BRAC actions affecting the installations in this recommendation has been reviewed. There are no known environmental impediments to implementation of this recommendation.

## **Recommendation Supporting Information**

### **RC Transformation in Georgia (AFRC FT Benning, GA)**

19-Apr-05

#### **Competing Recommendations and Other Information:**

There are no potential or known competing recommendations that could conflict with this recommendation. This recommendation supports USA-0121 recommendation to close Fort Gillem by providing a relocation site for the vehicles and equipment stored at the Army Reserve Equipment Concentration Site (ECS).

#### **Force Structure Capabilities:**

The Reserve Component continues to be an important and necessary part of the Army's force structure to meet its current and future operational requirements. This recommendation is consistent with and supports the Army's Force Structure Plan submitted with the FY 06 Budget Documents, and provides the necessary capacity and capability to support the units affected by this action. It considers essential manning, training, organizing, equipping, and sustaining requirements, as well as approved transformational initiatives to ensure the Army and Department of Defense have the capabilities necessary to meet mission requirements.

Army BRAC analysis and this recommendation enable the efficient and effective reduction of 14 military positions to the Reserve Component in Georgia in accordance with the Force Structure Plan and the Total Army Analysis process.

#### **MVA Results:**

The Department of the Army has more than 4000 reserve component facilities across the United States. Because of the sheer numbers of these facilities, the process the Army had developed for arriving at a quantitative military value score for its 97 major installations (including leases) was not practical for its reserve component facilities. Additionally, if measured by the active process, which valued training lands and ranges among other things, the reserve component facilities would not have compared well against the active installations. For these reasons, it was the military judgment of the Department of the Army that it needed to craft a unique approach for ascertaining the overall military value of reserve component facilities. A team of functional experts from Headquarters, Department of the Army, the Office of the State Adjutant General, and the Army Reserve Regional Readiness Command conducted a military value assessment of state-owned and Army Reserve sub-threshold facilities. These facilities were assessed, specifically against DoD Criteria one through four, in their ability to support joint stationing options that enhance Army and DoD transformation; their ability to enhance reserve component operations training, mobilization and power projection capabilities; their ability to sustain recruiting and retention; their ability to consolidate functions wherever appropriate, to include schools, personnel, logistics, and other management functions; their ability to relocate Reserve component units and activities from leased and encroached properties that do not meet anti-terrorism and force-protection requirements onto established military facilities; and their ability to ensure the

## **Recommendation Supporting Information**

### **RC Transformation in Georgia (AFRC FT Benning, GA)**

19-Apr-05

future readiness of Army forces while reducing the long-term costs of sustaining the base structure. The assessments were certified by the Office of the Adjutant General and the Army Reserve Regional Readiness Command, validated by the Army Audit Agency, analyzed by the Army Basing Study Group, and utilized for deliberations.

Proposal closes lower value installations (in terms of the condition of the facilities, encroachment, proper size building, military vehicle parking and storage for the type of unit) and consolidates onto existing higher value installations where geographically feasible or onto an installation of higher value because it meets the requirements of the Army's Stationing Strategy for Reserve Component installations. Ft. Benning ranks #9 in Military Value.

This recommendation will significantly improve readiness and home station training opportunities by collocating U.S. Army Reserve Combat Support and Combat Service Support units. This collocation of units will allow for more effective communications, more realistic training venues and create cross-functional career development opportunities. The new reserve center will greatly enhance distributed learning and professional skills / sustainment training. Implementation of this recommendation will greatly enhance individual soldier and unit readiness by providing modern facilities for Reserve Component personnel and units to execute the Train/Alert/Deploy process in support of mobilization/demobilization operations.

Collocation of multiple units into a multi-functional center provides substantially improved homeland defense capabilities to the State of Georgia. Upon activation of the unit/units for emergency contingency missions, the center will provide critical enhanced communications infrastructure and staging areas for a more rapid response. The capacity of the facility allows for a response by larger, more capable task organized forces. Due to the existence of a federally controlled facility and secure communication capabilities, the center may also provide a platform for interagency participation and cooperation in response to a wide range of emergency homeland defense situations.

This recommendation will enhance recruitment and retention of the men and women in the Reserve Component by setting the conditions for better home station training and increased support for family readiness operations for mobilized reservists.

#### **Capacity Analysis Results:**

A team of functional experts from Headquarters, Department of the Army, the Office of the State Adjutant General, and the Army Reserve Regional Readiness Command utilized the Department of Defense Guard and Reserve Unit Facilities System (GRUFS)

## **Recommendation Supporting Information**

### **RC Transformation in Georgia (AFRC FT Benning, GA)**

19-Apr-05

database to conduct an installation inventory and capacity analysis of state-owned and Army Reserve sub-threshold facilities. These facilities were assessed against their ability to support Reserve Component training, operations, force structure stationing, mobilization, future expansion, potential surge, and anti-terrorism and force-protection requirements. Facilities that did not meet these requirements were identified for further analysis and potential closure or realignment. The assessments were certified by the Office of the Adjutant General and the Army Reserve Regional Readiness Command, validated by the Army Audit Agency, analyzed by the Army Basing Study Group, and utilized for deliberations.

Closing facilities do not have sufficient capacity for consolidation or expansion and do not meet current force structure or unit design requirements. Gaining installation has sufficient building capacity or build-able acres to support proposal. USAR closes Columbus Reserve center and vacates 2 buildings on Ft. Benning. Ft. Benning has over 168,000 acres of land area for ranges.

The new AFRC will provide capacity to meet current and future mission requirements, including increased surge capability for unforeseen missions, mobilization, and modified direct deployment requirements. A new AFRC is required to correct deficiencies in the availability and condition of the land and the facility currently in use by the affected Reserve Component units. Current properties and facilities do not meet Anti-terrorism/Force Protection (AT/FP) construction standards and they are surrounded by incompatible land uses that prohibit necessary stand off distances.

The existing facilities are outdated and can no longer support the current/evolving force structure/equipment changes and associated training requirements. The units affected by this recommendation require 132,537 Usable Square Feet (USF) of space while the closing facilities provided only 20,800 USF. See Table.

*\*\*\* End of Report \*\*\**

**Draft Deliberative Document - For Discussion Purposes Only - Do Not Release Under FOIA**

**ARMY RC ASSETS (000 ft2)**

Inst_Name	Aircraft Maint Hangar	Applied Inst Bldg	Dining Facility	General Admin Bldg	Gen Purp Instr Bldg	Large Unit HQ Bldg	Org Classroom	RC Training Facility	Small Unit HQ Bldg	Vehicle Maint Shop	Vehicle Maint Shop, ARNG	Vehicle Maint Shop, USAR	Vehicle Parking
63rd RSC			5,087					1,497,025		192		225,013	509,961
65th RSC								290,086		40,655		95,260	201,743
70th RSC	12,000			19,000				705,061		6,150	5,200	120,110	217,305
77th RSC								1,760,898				352,022	501,588
81st RSC	86,390				22,209			3,604,549		8,658		578,802	1,183,963
88th RSC			5,210	21,954	38,216		18,944	4,202,727		3,280	8,150	1,002,992	1,834,808
89th RSC								1,750,285				293,984	536,654
90th RSC	33,717							2,839,776		526		477,381	821,199
94th RSC								1,023,006				263,910	305,271
96th RSC							1,800	1,143,705		1,757		227,135	359,786
99th RSC	164,561							2,713,564		265		615,378	988,879
Alabama (-)	181,135		2,800	88,651	21,327	3,272		2,407,896	7,064	1,718	280,000	6,773	325,746
Alaska	114,254	5,000	12,630	69,539	36,187			473,030		432	44,852		116,297
Arizona	147,418	18,250	27,971	100,790	15,400	42,575		473,502	6,165	36,614	195,715		339,875
Arkansas (-)								985,177			80,673		
Ashland			10,407	18,640	59,849								21,553
California (-)	265,604	27,252	54,950	259,460	107,505	20,140	5,582	2,226,325	13,680	2,794	301,224	62,058	318,329
Camp Atterbury		3,116	98,967	12,420	32,826	15,304		64,370	34,844	12,338	54,779		175,941
Camp Beauregard			34,589	28,740	18,634	6,289		53,909	8,476		19,257		11,024
Camp Blanding		2,815	71,262	62,824	66,189	27,937		39,199	32,073	2,626	60,007		137,709
Camp Dawson			21,537	16,051	8,595	1,706	1,200	19,745	3,982		65,925		9,661
Camp Dodge		140,396	17,887	127,025	24,570	17,646		192,230	17,121	36,288			206,751
Camp Edwards		2,304	25,470	20,417	845	28,751			324		32,135		199,377
Camp Ethan Allen		2,160	18,556	3,470	55,574	6,248	2,106	98,346	10,856	1,440	25,254		116,208
Camp Grafton		9,620	31,936	22,462	23,237	5,894		7,312	30,432		60,858		122,241
Camp Gruber		2,341	45,530	14,546	14,893	13,684			27,490		21,607		41,090
Camp Guernsey	2,800		31,619	15,590	25,003			1,123	3,437		26,383		
Camp McCain		2,840		2,918	13,132	2,030	18,900	29,405	10,257	272	44,708		35,986
Camp Rilea		4,500	5,300	4,392		11,934	13,087	22,620			22,583		66,666
Camp Ripley	14,340	720	216,230	67,477	116,105	98,646		80,968	62,484		329,896		374,909
Camp Roberts			92,480	61,961	23,548	20,793			38,616	801	94,144		135,304
Camp Robinson	45,830	2,100	45,073	178,169	148,484	4,846		135,163		8,260	191,424		646,686
Camp Santiago			70,485	42,738	2,048	12,991		15,590	21,320	3,168	76,830		80,783
Camp Shelby	35,744	28,159	244,883	136,155	157,031	76,015		75,786	96,585	99,674	207,591		28,733
Camp Smith		1,000	16,880	46,303	28,282			16,186			39,076		134
Camp Swift			19,485	21,608	2,392	2,386		27,490	8,624	441	7,910		3,933
Camp Williams			27,470	64,385	28,929	14,312	5,400	64,035	768	11,481	13,320		66,925
Camp Wolters			9,036	2,013						2,016	8,967		26,115
Colorado	38,716	144		64,737	31,864	13,128		474,487			127,779		73,884
Connecticut	180,165		5,080	20,264	117,410	16,410		1,036,243	3,840	2,400	107,451		82,166
Custer		23,567	37,844	9,206	52,168			64,739	8,700		12,988		159,112
Delaware	40,978	1,920	8,800	38,244	10,074			432,156	1,900	839	61,717		52,257
District of Columbia	20,186							677,564			38,807		
Florida (-)	141,838			75,018				1,204,945		518	126,219		271,251
Fort Chaffee			120,695	99,614	75,225	126,526	22,007	5,261	93,531	219,700	48,523		137,407
Fort Harrison			10,239	40,271	23,321			200,790			50,508		25,200
Fort McClellan		728	50,790	94,963	58,987	25,438		3,594	30,717	10,177	27,980		87,943
Fort Pickett	12,810		22,140	2,780	11,459	11,792		36,349	14,130	1,440	56,733	2,688	191,980
Georgia	116,880		240,471	144,886	23,536	31,010	17,679	1,117,233	73,420	5,750	187,180		656,280
Gowen Field	83,531	63,548	38,163	98,046	3,200	26,679		44,670	89,361	100	178,375		388,123

**Draft Deliberative Document - For Discussion Purposes Only - Do Not Release Under FOIA**

**ARMY RC ASSETS (000 ft2)**

**Draft Deliberative Document - For Discussion Purposes Only - Do Not Release Under FOIA**

**ARMY RC ASSETS (000 ft2)**

Inst Name	Aircraft Maint Hangar	Applied Inst Bldg	Dining Facility	General Admin Bldg	Gen Purp Instr Bldg	Large Unit HQ Bldg	Org Classroom	RC Training Facility	Small Unit HQ Bldg	Vehicle Maint Shop	Vehicle Maint Shop, ARNG	Vehicle Maint Shop, USAR	Vehicle Parking
Grayling	45,019	5,152	174,183	105,576	9,276	31,597	1,412	29,403	106,650		66,576		99,330
Greenleaf TS			5,104	4,281	8,000					2,928	9,378		15,189
Guam Territory		8,150	4,800	84,137	4,000		6,243	46,374			5,000		7,340
Hawaii	101,868		66,069	276,132	19,618	12,000		676,319			76,925		111,227
Idaho (-)			4,381	24,974				295,454			34,385		111,827
Illinois	83,813	754	17,152	131,042	26,760	32,224		2,367,689		8,710	191,702	22,171	1,648,524
Indiana (-)	99,105			80,921				1,628,801			209,400		650,618
Indiantown Gap	112,565		65,008	116,117	98,327		22,224	235,275		6,770	95,484	39,283	119,762
Iowa (-)	114,665	100						852,479		8,843	87,638		224,663
Kansas	114,759	49,347	4,749	62,431	123,546	22,765	14,545	902,353	7,127	21,330	229,706		191,352
Kentucky (-)	53,744	3,036		58,042	2,400	10,000		892,130			231,887		292,341
Louisiana (-)	129,932	10,000	18,003	82,612	40,090	4,184	5,525	1,203,345	4,465	76,210	219,462		85,182
Maine	70,863	6,740	5,067	27,456	101,672	34,989		736,176	7,501		92,941		245,389
Maryland	51,609	6,385	7,084	60,741	43,848	13,226		888,195	6,431	2,629	131,289		476,196
Massachusetts (-)	98,057	12,768	4,100	97,531				1,271,709		11,910	133,354		343,761
McCraday			19,151	12,146	194,468	8,414			19,861	1,400	8,300		
Michigan (-)	120,042			9,046				1,329,035	5,440	1,812	179,296		407,559
Minnesota (-)	58,427	5,400		38,153				1,564,864			83,000		292,599
Mississippi (-)	112,727	5,492		129,925	26,422		4,461	1,343,778		4,533	89,861		52,583
Missouri	138,678	57,767	36,388	138,338	62,321	8,992	9,655	1,539,062	29,124	2,113	196,839	5,200	523,892
Montana (-)	118,393	13,786						467,249			72,410		179,386
Nebraska (-)	64,160			25,500				694,367			135,741		150,823
Nevada	73,879		3,066	8,055	5,851			257,868	8,393		86,124		216,661
New Hampshire	21,581	7,162	5,458	50,594	10,055			394,753			55,735		78,019
New Jersey	199,182	5,687	20,790	122,417	120,096	11,766	22,717	1,472,037			213,952		209,308
New Mexico	28,130		2,727	121,454	22,621			729,166	725	3,225	177,752		226,825
New York (-)	93,120	6,030	700	156,227	13,249	750		3,183,718			324,429		346,487
North Carolina	128,084	56,919	9,091	36,661	24,692	513	1,140	1,622,537	19,580	12,975	145,342		138,355
North Dakota (-)	59,639			55,586				527,330			69,142		136,044
Ohio	164,677	6,186	69,045	97,676	72,078	7,627		1,444,926	2,671	22,085	229,029		189,102
Oklahoma (-)	108,180		16,291	82,270	37,118			1,511,300	1,904	505	212,091		51,384
Oregon (-)	137,835	4,459	18,832	112,331	83,513	2,567	4,816	988,513		998	195,412		176,388
Pennsylvania (-)			7,769	4,314	15,220		5,000	2,304,214	40,000	16,845	155,034		140,419
Puerto Rico (-)	51,150		12,674	45,248	37,910			656,752		698	39,629		397,206
Rhode Island	68,503		6,848	25,722	14,135		840	435,024			41,595		114,326
South Carolina (-)	93,691	5,095	15,018	39,010	6,300		14,569	1,527,226		194,974	304,213		596,174
South Dakota	71,545		28,070	48,541	26,460	3,712	15,777	670,997	7,762	1,834	111,818		136,864
Tennessee (-)	34,800		14,973	58,832			640	2,124,527	3,144	9,903	140,936	28,641	588,559
Texas (-)	273,265	7,520	10,979	154,721	38,311		2,012	2,771,800		26,383	654,042	13,194	658,933
Utah (-)	86,046		14,482	30,084	6,000	4,364		724,409	12,550	1,136	135,254		91,056
Vermont (-)	39,744	2,698	2,031	32,302	5,025			390,020			74,434		16,019
Virgin Islands				21,400	5,400			105,924			27,064		4,577
Virginia (-)	62,149	3,075	24,065	273,541	13,083	8,313	540	970,190	21,406	2,870	93,282		570,044
VTS Milan			13,700	13,225	16,148				7,620	13,071	10,382		26,891
VTS Smyrna	126,645	24,369		69,721	34,643			89,083	1,250	2,367	81,093		147,551
Washington	140,624		5,268	76,873	41,880	5,402		1,100,277	17,558	5,809	228,017		181,204
West Virginia (-)	133,623	480,000		89,634			1,260	686,239	2,880		97,583		1,125,036
Western Kentucky			10,412	14,492	19,319	2,812					37,300		86,595
Wisconsin	94,650		19,512	107,334	36,017			1,466,382			327,823		383,450
Wyoming (-)	47,309			10,945				356,629		5,964	31,573		30,814

**Draft Deliberative Document - For Discussion Purposes Only - Do Not Release Under FOIA**

**ARMY RC ASSETS (000 ft2)**

Draft Deliberative Document - For Discussion Purposes Only - Do Not Release Under FOIA

ARMY RC REQUIREMENTS (000 ft2)

Inst Name	Aircraft Maint Hangar	Applied Inst Bldg	Dining Facility	General Admin Bldg	Gen Purp Instr Bldg	Large Unit HQ Bldg	Org Classroom	RC Training Facility	Small Unit HQ Bldg	Vehicle Maint Shop	Vehicle Maint Shop, ARNG	Vehicle Maint Shop, USAR	Vehicle Parking
63rd RSC	2,000	202	5,087	7,614	2,916	52,810		1,953,025	20,746	5,907		237,193	1,342,254
65th RSC				4,374	11,340			331,486		40,655		95,260	443,564
70th RSC				31,266	1,710			659,771			5,200	120,110	457,408
77th RSC				59,454				1,722,026				341,867	1,359,728
81st RSC	11,500			88,614	90	10,528		4,925,164	29,887	11,814		668,909	2,097,238
88th RSC			5,210	174,636	4,770			4,437,693	11,605	8,091	8,150	998,349	3,556,289
89th RSC	44,300		1,000	259,173				2,048,875		14,394		227,844	1,643,644
90th RSC	123,763			142,884	1,170	111,128		2,853,027	34,815	8,852		1,243,683	2,142,407
94th RSC				38,070				975,940				265,568	799,018
96th RSC				44,388				858,701				263,275	733,877
99th RSC	2,000					13,768		3,506,500	9,141	5,907		706,705	2,028,270
Alabama (-)	155,776			194,076	9,234	27,538		3,561,770	11,605	16,350	304,449	6,773	1,939,896
Alaska	17,500		5,500	28,836	3,078			247,381	1,450		125,283		238,327
Arizona	91,471			90,558	37,759			634,480			60,426		583,770
Arkansas (-)				4,374				1,527,056			85,741		684,956
Ashland			13,245	4,212	20,961			26,882					165,169
California (-)	342,071		11,000	176,904		3,150		3,029,187	5,800	2,310	454,493	62,058	2,316,362
Camp Atterbury	2,000			93,500	32,238	1,890	22,050	3,320	96,593	49,300	16,170	60,995	313,676
Camp Beauregard				38,500	36,774	7,470	9,450	1,660	87,272	21,750	6,930	92,432	283,848
Camp Blanding				11,000	27,378	15,498	3,150		57,524	5,800	2,310	60,007	223,101
Camp Dawson				4,860	5,535				67,064	1,450	12,449		187,052
Camp Dodge			38,500	82,296	9,945	9,450	1,660	102,573	20,300	6,930	81,395		407,694
Camp Edwards				27,500	13,284	5,616	6,300	1,660	41,240	14,500	4,620	32,135	216,717
Camp Ethan Allen				5,500	14,742	7,524	3,150		55,849	4,350	2,310	25,254	186,124
Camp Grafton				11,000	5,670	14,526	3,150		41,747	5,800	2,310	60,858	185,575
Camp Gruber				22,000			6,300	1,660		11,600	4,620	21,607	179,109
Camp Guemsey				22,000	6,480	6,300	6,300	1,660	29,846	11,600	4,620	26,383	185,519
Camp McCain				2,916					38,109			44,708	161,498
Camp Rilea				5,500	4,374		3,150		29,846	4,350	2,310	22,583	168,152
Camp Ripley				55,000	17,172	11,115	12,600	1,660	80,968	29,000	9,240	329,896	310,177
Camp Roberts				60,500	28,674	12,906	15,750	3,320	40,238	33,350	11,550	179,280	247,139
Camp Robinson	55,578			27,550	122,148	47,197			114,816			103,737	381,901
Camp Santiago				44,000	5,994		9,450	1,660	54,998	21,750	6,930	65,361	217,913
Camp Shelby			137,889	63,018	39,996	25,200	4,980	133,147	67,220	18,480	207,591		426,329
Camp Smith				6,318	9,945				47,896			39,076	168,838
Camp Swift									26,314			7,910	158,606
Camp Williams		2,697	18,745	22,032	19,557				96,541	1,450		13,320	285,874
Camp Wolters												8,967	
Colorado	151,294	403		23,166	914				654,965			271,886	391,727
Connecticut	91,293			42,282	5,967				663,696			116,912	426,420
Custer				6,318	11,142				55,878	1,450		19,482	192,948
Delaware	19,590			18,792	3,393				424,470			61,717	217,077
District of Columbia	22,200			35,802	2,826				164,774			38,807	207,351
Florida (-)	40,470			51,030	7,749				1,810,651			126,219	1,037,276
Fort Chaffee				99,000	35,964		22,050	3,320	40,161	53,650	16,170	48,523	254,835
Fort Harrison				5,500	46,980	3,843			101,170	2,900		50,508	250,519
Fort McClellan				22,000	14,418		6,300	1,660	27,003	13,050	4,620	27,980	207,965
Fort Pickett				55,000	21,222	13,473	12,600	1,660	116,628	29,000	9,240	56,733	290,756
Georgia	29,090			66,258	10,431				1,769,897			187,180	1,057,061
Gowen Field	104,618	5,493	16,500	109,674	12,366	3,150			114,617	8,700	2,310	207,193	337,288
Grayling			5,500	13,122					57,446	1,450		66,576	213,497

Draft Deliberative Document - For Discussion Purposes Only - Do Not Release Under FOIA

ARMY RC REQUIREMENTS (000 ft2)



Draft Deliberative Document - For Discussion Purposes Only - Do Not Release Under FOIA

ARMY RC REQUIREMENTS (000 ft2)

Inst Name	Aircraft Maint Hangar	Applied Inst Bldg	Dining Facility	General Admin Bldg	Gen Purp Instr Bldg	Large Unit HQ Bldg	Org Classroom	RC Training Facility	Small Unit HQ Bldg	Vehicle Maint Shop	Vehicle Maint Shop, ARNG	Vehicle Maint Shop, USAR	Vehicle Parking
Greenleaf TS				2,592							14,600		151,054
Guam Territory				15,876	21,446			74,416			38,000		64,641
Hawaii	2,000			46,332	8,460			380,806			71,171		288,206
Idaho (-)				1,134				416,877			29,435		213,445
Illinois	131,760			73,062	8,820			1,678,689			244,739	20,158	1,172,365
Indiana (-)	105,990			86,184				1,897,777			216,622		1,245,110
Indiantown Gap	181,752		77,389	203,796	35,361	12,600	1,660	167,534	36,770	9,240	98,592	39,283	573,715
Iowa (-)	126,992							1,216,413			87,638		677,204
Kansas	13,500			53,622	16,767			1,205,962			237,138		837,777
Kentucky (-)	106,744			46,332				1,177,351			231,887		722,183
Louisiana (-)	31,700			70,146	3,213			1,709,278			244,756	5,740	1,100,597
Maine	32,488			36,450	2,439			533,324			92,941		293,821
Maryland				38,880	6,939			1,197,130			131,289		636,188
Massachusetts (-)	123,818			45,522				1,646,638			133,354		854,617
McCrary				8,910	13,797			39,131			17,894		174,268
Michigan (-)	29,420			51,192				1,335,848			179,296		933,553
Minnesota (-)	116,710			51,516				2,149,394			83,000		1,069,735
Mississippi (-)	139,593			54,918				3,024,365			269,000		1,109,568
Missouri	189,003			66,744	7,875			1,674,882	1,450		198,339	5,200	1,041,752
Montana (-)	35,180							436,026			72,410		270,555
Nebraska (-)	120,500			29,808				841,573			177,947		472,629
Nevada	2,000			32,886	3,483			312,522			52,545		255,056
New Hampshire	30,488			33,048	3,744			397,941			55,735		238,802
New Jersey	32,920			10,854	1,350			1,079,026			221,493		771,451
New Mexico	32,488			40,500	10,188			852,231			144,947		571,975
New York (-)	122,710			72,576				1,928,772			265,140		1,406,382
North Carolina	142,944			74,358				1,956,816			330,773		1,127,939
North Dakota (-)	17,590			20,088				486,044			69,142		386,619
Ohio	114,550			65,124	10,786			1,837,291			214,290		1,222,866
Oklahoma (-)	100,458			67,230	11,799			1,302,615			193,290		799,826
Oregon (-)	32,488			48,276	8,739			1,287,714			198,568		684,628
Pennsylvania (-)	23,420							2,665,099			176,447		1,756,790
Puerto Rico (-)	8,000	4,306	13,245	54,270	22,178			1,119,852			39,629		710,231
Rhode Island	29,090			20,736	3,672			461,595			47,447		328,858
South Carolina (-)	40,470		13,245	59,130	11,700			2,272,754			306,588		1,242,420
South Dakota	30,488		27,500	32,562	5,589	6,300	1,660	682,389	14,500	4,620	113,331		491,968
Tennessee (-)	93,442			68,202				2,696,291			197,275	28,641	1,461,272
Texas (-)	120,750			170,586	3,969			2,732,050			654,042	13,194	2,024,253
Utah (-)	40,470			59,940				596,043			135,254		390,495
Vermont (-)	116,659			40,662	8,624			647,410			74,434		361,096
Virgin Islands	12,980			28,350	1,692			139,256			27,064		101,204
Virginia (-)	26,480			255,312				1,500,409			123,396		875,258
VTS Milan					1,991						12,512		152,037
VTS Smyrna	8,000			3,726	8,127			80,385			81,093		251,008
Washington	2,000			71,280	10,179			739,804			177,046		575,259
West Virginia (-)	57,578	324		31,428	5,784			888,202			97,583		492,098
Western Kentucky				12,312				30,058			41,936		160,811
Wisconsin	31,700			26,892				1,814,873			327,823		895,136
Wyoming (-)	30,488			24,786				297,191			31,573		180,035

Draft Deliberative Document - For Discussion Purposes Only - Do Not Release Under FOIA

ARMY RC REQUIREMENTS (000 ft2)





Draft Deliberative Document - For Discussion Purposes Only - Do Not Release Under FOIA

**ARMY RC SURGE (000 ft2)**

Inst_Name	Aircraft Maint Hangar	Applied Inst Bldg	Dining Facility	General Admin Bldg	Gen Purp Instr Bldg	Large Unit HQ Bldg	Org Classroom	RC Training Facility	Small Unit HQ Bldg	Vehicle Maint Shop	Vehicle Maint Shop, ARNG	Vehicle Maint Shop, USAR	Vehicle Parking
63rd RSC													
65th RSC													
70th RSC	12,000							45,290		6,150			
77th RSC								38,872				10,155	
81st RSC	74,890				22,119								
88th RSC					33,446		18,944					4,643	
89th RSC												66,140	
90th RSC													
94th RSC								47,066					
96th RSC							1,800	285,004		1,757			
99th RSC	162,561												
Alabama (-)	25,359		2,800		12,093								
Alaska	96,754	5,000	7,130	40,703	33,109			225,649		432			
Arizona	55,947	18,250	27,971	10,232		42,575			6,165	36,614	135,289		
Arkansas (-)													
Ashland				14,428	38,888								
California (-)		27,252	43,950	82,556	107,505	16,990	5,582		7,880	484			
Camp Atterbury		3,116	5,467		30,936								
Camp Beauregard					11,164					12,327			
Camp Blanding		2,815	60,262	35,446	50,691	24,787			26,273	316			
Camp Dawson			21,537	11,191	3,060	1,706	1,200		2,532		53,476		
Camp Dodge		140,396		44,729	14,625	8,196		89,657		29,358			
Camp Edwards		2,304		7,133		22,451							
Camp Ethan Allen		2,160	13,056		48,050	3,098	2,106	42,497	6,506				
Camp Grafton		9,620	20,936	16,792	8,711	2,744			24,632				
Camp Gruber		2,341	23,530	14,546	14,893	7,384			15,890				
Camp Guernsey	2,800		9,619	9,110	18,703								
Camp McCain		2,840		2	13,132	2,030	18,900		10,257	272			
Camp Rilea		4,500		18		8,784	13,087						
Camp Ripley	14,340	720	161,230	50,305	104,990	86,046			33,484				64,732
Camp Roberts			31,980	33,287	10,642	5,043			5,266				
Camp Robinson		2,100	17,523	56,021	101,287	4,846		20,347		8,260	87,687		264,785
Camp Santiago			26,485	36,744	2,048	3,541					11,469		
Camp Shelby	35,744	28,159	106,994	73,137	117,035	50,815			29,365	81,194			
Camp Smith		1,000	16,880	39,985	18,337								
Camp Swift			19,485	21,608	2,392	2,386		1,176	8,624	441			
Camp Williams			8,725	42,353	9,372	14,312	5,400			11,481			
Camp Wolters			9,036	2,013						2,016			26,115
Colorado				41,571	30,950	13,128							
Connecticut	88,872		5,080		111,443	16,410		372,547	3,840	2,400			
Custer		23,567	37,844	2,888	41,026			8,861	7,250				
Delaware	21,388	1,920	8,800	19,452	6,681			7,686	1,900	839			
District of Columbia								512,790					
Florida (-)	101,368			23,988						518			
Fort Chaffee			21,695	63,650	75,225	104,476	18,687		39,881	203,530			
Fort Harrison			4,739		19,478			99,620					
Fort McClellan		728	28,790	80,545	58,987	19,138			17,667	5,557			
Fort Pickett	12,810												
Georgia	87,790		240,471	78,628	13,105	31,010	17,679		73,420	5,750			
Gowen Field		58,055	21,663			23,529			80,661				50,835

Draft Deliberative Document - For Discussion Purposes Only - Do Not Release Under FOIA

**ARMY RC SURGE (000 ft2)**

**Draft Deliberative Document - For Discussion Purposes Only - Do Not Release Under FOIA**

**ARMY RC SURGE (000 ft2)**

Inst Name	Aircraft Maint Hangar	Applied Inst Bldg	Dining Facility	General Admin Bldg	Gen Purp Instr Bldg	Large Unit HQ Bldg	Org Classroom	RC Training Facility	Small Unit HQ Bldg	Vehicle Maint Shop	Vehicle Maint Shop, ARNG	Vehicle Maint Shop, USAR	Vehicle Parking
Graying	45,019	5,152	168,683	92,454	9,276	31,597	1,412		105,200				
Greenlief TS			5,104	1,689	8,000					2,928			
Guam Territory		8,150	4,800	68,261			6,243						
Hawaii	99,868		66,069	229,800	11,158	12,000		295,513			5,754		
Idaho (-)			4,381	23,840							4,950		
Illinois		754	17,152	57,980	17,940	32,224		689,000		8,710		2,013	476,159
Indiana (-)													
Indiantown Gap					62,966		20,564	67,741					
Iowa (-)		100								8,843			
Kansas	101,259	49,347	4,749	8,809	106,779	22,765	14,545		7,127	21,330			
Kentucky (-)		3,036		11,710	2,400	10,000							
Louisiana (-)	98,232	10,000	18,003	12,466	36,877	4,184	5,525		4,465	76,210			
Maine	38,375	6,740	5,067		99,233	34,989		202,852	7,501				
Maryland	51,609	6,385	7,084	21,861	36,909	13,226			6,431	2,629			
Massachusetts (-)		12,768	4,100	52,009						11,910			
McCraday			19,151	3,236	180,671	8,414			19,861	1,400			
Michigan (-)	90,622								5,440	1,812			
Minnesota (-)		5,400											
Mississippi (-)		5,492		75,007	26,422		4,461			4,533			
Missouri		57,767	36,388	71,594	54,446	8,992	9,655		27,674	2,113			
Montana (-)	83,213	13,786						31,223					
Nebraska (-)													
Nevada	71,879		3,066		2,368				8,393		33,579		
New Hampshire		7,162	5,458	17,546	6,311								
New Jersey	166,262	5,687	20,790	111,563	118,746	11,766	22,717	393,011					
New Mexico			2,727	80,954	12,433				725	3,225	32,805		
New York (-)		6,030	700	83,651	13,249	750		1,254,946			59,289		
North Carolina		56,919	9,091		24,692	513	1,140		19,580	12,975			
North Dakota (-)	42,049			35,498				41,286					
Ohio	50,127	6,186	69,045	32,552	61,292	7,627			2,671	22,085	14,739		
Oklahoma (-)	7,722		16,291	15,040	25,319			208,685	1,904	505	18,801		
Oregon (-)	105,347	4,459	18,832	64,055	74,774	2,567	4,816				998		
Pennsylvania (-)			7,769	4,314	15,220		5,000		40,000	16,845			
Puerto Rico (-)	43,150				15,732						698		
Rhode Island	39,413		6,848	4,986	10,463		840						
South Carolina (-)	53,221	5,095	1,773				14,569			194,974			
South Dakota	41,057		570	15,979	20,871		14,117						
Tennessee (-)			14,973				640		3,144	9,903			
Texas (-)	152,515	7,520	10,979		34,342		2,012	39,750		26,383			
Utah (-)	45,576		14,482		6,000	4,364		128,366	12,550	1,136			
Vermont (-)		2,698	2,031										
Virgin Islands					3,708								
Virginia (-)	35,669	3,075	24,065	18,229	13,083	8,313	540		21,406	2,870			
VTS Milan			13,700	13,225	14,157				7,620	13,071			
VTS Smyrna	118,645	24,369		65,995	26,516			8,698	1,250	2,367			
Washington	138,624		5,268	5,593	31,701	5,402		360,473	17,558	5,809	50,971		
West Virginia (-)	76,045	479,676		58,206			1,260		2,880				632,938
Western Kentucky			10,412	2,180	19,319	2,812							
Wisconsin	62,950		19,512	80,442	36,017								
Wyoming (-)	16,821							59,438		5,964			

**Draft Deliberative Document - For Discussion Purposes Only - Do Not Release Under FOIA**

**ARMY RC SURGE (000 ft2)**

SCENARIO ERROR REPORT (COBRA v6.10)

Data As Of 04/21/2005 15:46:38, Report Created 04/21/2005 15:54:38

Department : Army  
Scenario File : E:\USA-0143v3 RC Transform in GA (AFRC FT Benning, GA)\Criterion 5-COBRA\AFRC Fort Benning, GAkw.CBR  
Option Pkg Name: AFRC Fort Benning, GA  
Std Fctrs File : D:\COBRA 6.10\Army COBRA 6.10\BRAC2005.SFF

OVERHEAD/SUSTAINMENT:

USARC Fort Benning had a Sustainment budget of \$0K with 0 SF of facilities.

Department : Army  
 Scenario File : E:\USA-0143v3 RC Transform in GA (AFRC FT Benning, GA)\Criterion 5-COBRA\AFRC Fort Benning, GAKw.CBR  
 Option Pkg Name: AFRC Fort Benning, GA  
 Std Fctrs File : D:\COBRA 6.10\Army COBRA 6.10\BRAC2005.SFF

Starting Year : 2006  
 Final Year : 2008  
 Payback Year : 2013 (5 Years)

NPV in 2025(\$K): -44,823  
 1-Time Cost(\$K): 21,425

Net Costs in 2005 Constant Dollars (\$K)								
	2006	2007	2008	2009	2010	2011	Total	Beyond
	----	----	----	----	----	----	-----	-----
MilCon	1,472	16,356	0	0	0	0	17,828	0
Person	0	-418	-2,964	-5,436	-5,436	-5,436	-19,691	-5,436
Overhd	-23	517	427	421	421	421	2,183	410
Moving	0	0	35	0	0	0	35	0
Missio	0	0	0	0	0	0	0	0
Other	0	3,157	0	0	0	0	3,157	0
<b>TOTAL</b>	<b>1,449</b>	<b>19,613</b>	<b>-2,502</b>	<b>-5,015</b>	<b>-5,015</b>	<b>-5,015</b>	<b>3,514</b>	<b>-5,026</b>

	2006	2007	2008	2009	2010	2011	Total
	----	----	----	----	----	----	-----
<b>POSITIONS ELIMINATED</b>							
Off	0	0	3	0	0	0	3
Enl	0	12	47	0	0	0	59
Civ	0	1	2	0	0	0	3
<b>TOT</b>	<b>0</b>	<b>13</b>	<b>52</b>	<b>0</b>	<b>0</b>	<b>0</b>	<b>65</b>

<b>POSITIONS REALIGNED</b>							
Off	0	0	0	0	0	0	0
Enl	0	0	0	0	0	0	0
Stu	0	0	0	0	0	0	0
Civ	0	0	0	0	0	0	0
<b>TOT</b>	<b>0</b>	<b>0</b>	<b>0</b>	<b>0</b>	<b>0</b>	<b>0</b>	<b>0</b>

Summary:

-----  
 PIMS #189 RC Transformation in Georgia (AFRC Fort Benning) USA # 143

Transform Reserve Component facilities in the State of Georgia through the following actions: Close the United States Army Reserve Center, Columbus, Georgia and relocate and consolidate those units together with Army Reserve Units currently on Fort Benning into a new United States Army Reserve Center on Fort Benning, Georgia.

Department : Army  
 Scenario File : E:\USA-0143v3 RC Transform in GA (AFRC FT Benning, GA)\Criterion 5-COBRA\AFRC Fort Benning, GAKw.CBR  
 Option Pkg Name: AFRC Fort Benning, GA  
 Std Fctrs File : D:\COBRA 6.10\Army COBRA 6.10\BRAC2005.SFF

Costs in 2005 Constant Dollars (\$K)								
	2006	2007	2008	2009	2010	2011	Total	Beyond
	----	----	----	----	----	----	----	-----
MilCon	1,472	16,356	0	0	0	0	17,828	0
Person	0	110	281	0	0	0	391	0
Overhd	4	545	576	570	570	570	2,835	570
Moving	0	0	35	0	0	0	35	0
Missio	0	0	0	0	0	0	0	0
Other	0	3,157	0	0	0	0	3,157	0
<b>TOTAL</b>	<b>1,476</b>	<b>20,168</b>	<b>893</b>	<b>570</b>	<b>570</b>	<b>570</b>	<b>24,247</b>	<b>570</b>

Savings in 2005 Constant Dollars (\$K)								
	2006	2007	2008	2009	2010	2011	Total	Beyond
	----	----	----	----	----	----	----	-----
MilCon	0	0	0	0	0	0	0	0
Person	0	528	3,246	5,436	5,436	5,436	20,082	5,436
Overhd	27	27	149	149	149	149	652	160
Moving	0	0	0	0	0	0	0	0
Missio	0	0	0	0	0	0	0	0
Other	0	0	0	0	0	0	0	0
<b>TOTAL</b>	<b>27</b>	<b>555</b>	<b>3,395</b>	<b>5,585</b>	<b>5,585</b>	<b>5,585</b>	<b>20,733</b>	<b>5,596</b>



COBRA PERSONNEL/SF/SUSTAINMENT/RECAP/BOS DELTAS REPORT (COBRA v6.10)  
 Data As Of 04/21/2005 15:46:38, Report Created 04/21/2005 15:54:39

Department : Army  
 Scenario File : E:\USA-0143v3 RC Transform in GA (AFRC FT Benning, GA)\Criterion 5-COBRA\AFRC Fort Benning, GAKw.CBR  
 Option Pkg Name: AFRC Fort Benning, GA  
 Std Fctrs File : D:\COBRA 6.10\Army COBRA 6.10\BRAC2005.SFF

Base	Personnel			
	Start*	Finish*	Change	%Change
Columbus USARC	9	0	-9	-100%
FT Benning Bldg 4960	0	0	0	0%
FT Benning Bldg 15	56	0	-56	-100%
USARC Fort Benning	0	0	0	0%
TOTAL	65	0	-65	-100%

Base	Square Footage				
	Start	Finish	Change	%Change	Chg/Per
Columbus USARC	8,000	0	-8,000	-100%	889
FT Benning Bldg 4960	3,000	0	-3,000	-100%	0
FT Benning Bldg 15	9,800	0	-9,800	-100%	175
USARC Fort Benning	0	132,537	132,537	0%	0
TOTAL	20,800	132,537	111,737	537%	-1,719

Base	Base Operations Support (2005\$)				
	Start*	Finish*	Change	%Change	Chg/Per
Columbus USARC	25,000	0	-25,000	-100%	2,778
FT Benning Bldg 4960	23,000	0	-23,000	-100%	0
FT Benning Bldg 15	15,000	0	-15,000	-100%	268
USARC Fort Benning	0	0	0	0%	0
TOTAL	63,000	0	-63,000	-100%	969

Base	Sustainment (2005\$)				
	Start	Finish	Change	%Change	Chg/Per
Columbus USARC	26,800	0	-26,800	-100%	2,978
FT Benning Bldg 4960	9,900	0	-9,900	-100%	0
FT Benning Bldg 15	32,800	0	-32,800	-100%	586
USARC Fort Benning	10	382,830	382,820	3828199%	0
TOTAL	69,510	382,830	313,320	451%	-4,820

Base	Recapitalization (2005\$)				
	Start	Finish	Change	%Change	Chg/Per
Columbus USARC	10,492	0	-10,492	-100%	1,166
FT Benning Bldg 4960	3,906	0	-3,906	-100%	0
FT Benning Bldg 15	12,824	0	-12,824	-100%	229
USARC Fort Benning	0	158,800	158,800	0%	0
TOTAL	27,222	158,800	131,578	483%	-2,024

COBRA PERSONNEL/SF/SUSTAINMENT/RECAP/BOS DELTAS REPORT (COBRA v6.10) - Page 2  
 Data As Of 04/21/2005 15:46:38, Report Created 04/21/2005 15:54:39

Department : Army  
 Scenario File : E:\USA-0143v3 RC Transform in GA (AFRC FT Benning, GA)\Criterion 5-COBRA\AFRC Fort Benning, GAKw.CBR  
 Option Pkg Name: AFRC Fort Benning, GA  
 Std Fctrs File : D:\COBRA 6.10\Army COBRA 6.10\BRAC2005.SFF

Base	Sustain + Recap + BOS (2005\$)				
	Start	Finish	Change	%Change	Chg/Per
-----	-----	-----	-----	-----	-----
Columbus USARC	62,292	0	-62,292	-100%	6,921
FT Benning Bldg 4960	36,806	0	-36,806	-100%	0
FT Benning Bldg 15	60,624	0	-60,624	-100%	1,082
USARC Fort Benning	10	541,630	541,620	5416203%	0
-----	-----	-----	-----	-----	-----
TOTAL	159,732	541,630	381,898	239%	-5,875

Base	Plant Replacement Value (2005\$)				
	Start	Finish	Change	%Change	Chg/Per
-----	-----	-----	-----	-----	-----
Columbus USARC	1,080,700	0	-1,080,700	-100%	120,078
FT Benning Bldg 4960	402,300	0	-402,300	-100%	0
FT Benning Bldg 15	1,320,900	0	-1,320,900	-100%	23,587
USARC Fort Benning	0	16,356,445	16,356,445	0%	0
-----	-----	-----	-----	-----	-----
TOTAL	2,803,900	16,356,445	13,552,545	483%	-208,501

\* "Start" and "Finish" values for Personnel and BOS both include the Programmed Installation Population (non-BRAC) Changes, so that only changes attributable to the BRAC action are reflected in the "Change" columns of this report.

Department : Army  
 Scenario File : E:\USA-0143v3 RC Transform in GA (AFRC FT Benning, GA)\Criterion 5-COBRA\AFRC Fort Benning, GAkw.CBR  
 Option Pkg Name: AFRC Fort Benning, GA  
 Std Fctrs File : D:\COBRA 6.10\Army COBRA 6.10\BRAC2005.SFF

ONE-TIME COSTS ----- (\$K) -----	2006 -----	2007 -----	2008 -----	2009 -----	2010 -----	2011 -----	Total -----
CONSTRUCTION							
MILCON	1,472	16,356	0	0	0	0	17,828
O&M							
CIV SALARY							
Civ RIF	0	57	57	0	0	0	115
Civ Retire	0	0	0	0	0	0	0
CIV MOVING							
Per Diem	0	0	0	0	0	0	0
POV Miles	0	0	0	0	0	0	0
Home Purch	0	0	0	0	0	0	0
HHG	0	0	0	0	0	0	0
Misc	0	0	0	0	0	0	0
House Hunt	0	0	0	0	0	0	0
PPP	0	0	35	0	0	0	35
RITA	0	0	0	0	0	0	0
FREIGHT							
Packing	0	0	0	0	0	0	0
Freight	0	0	0	0	0	0	0
Vehicles	0	0	0	0	0	0	0
Unemployment	0	4	4	0	0	0	9
OTHER							
Info Tech	0	0	0	0	0	0	0
Prog Manage	4	3	2	0	0	0	9
Supt Contract	0	0	0	0	0	0	0
Mothball	0	0	4	0	0	0	4
1-Time Move	0	0	0	0	0	0	0
MIL PERSONNEL							
MIL MOVING							
Per Diem	0	0	0	0	0	0	0
POV Miles	0	0	0	0	0	0	0
HHG	0	0	0	0	0	0	0
Misc	0	0	0	0	0	0	0
OTHER							
Elim PCS	0	48	219	0	0	0	267
OTHER							
HAP / RSE	0	0	0	0	0	0	0
Environmental	0	8	0	0	0	0	8
Misn Contract	0	0	0	0	0	0	0
1-Time Other	0	3,149	0	0	0	0	3,149
TOTAL ONE-TIME	1,476	19,626	323	0	0	0	21,425

Department : Army  
 Scenario File : E:\USA-0143v3 RC Transform in GA (AFRC FT Benning, GA)\Criterion 5-COBRA\AFRC Fort Benning, GAkw.CBR  
 Option Pkg Name: AFRC Fort Benning, GA  
 Std Fctrs File : D:\COBRA 6.10\Army COBRA 6.10\BRAC2005.SFF

RECURRINGCOSTS ----- (\$K) -----	2006 ----	2007 ----	2008 ----	2009 ----	2010 ----	2011 ----	Total -----	Beyond -----
O&M								
Sustainment	0	383	383	383	383	383	1,914	383
Recap	0	159	159	159	159	159	794	159
BOS	0	0	0	0	0	0	0	0
Civ Salary	0	0	0	0	0	0	0	0
TRICARE	0	0	0	0	0	0	0	0
MIL PERSONNEL								
Off Salary	0	0	0	0	0	0	0	0
Enl Salary	0	0	0	0	0	0	0	0
House Allow	0	0	0	0	0	0	0	0
OTHER								
Mission Activ	0	0	0	0	0	0	0	0
Misc Recur	0	0	28	28	28	28	114	28
TOTAL RECUR	0	542	570	570	570	570	2,822	570
TOTAL COST	1,476	20,168	893	570	570	570	24,247	570
ONE-TIME SAVES ----- (\$K) -----	2006 ----	2007 ----	2008 ----	2009 ----	2010 ----	2011 ----	Total -----	
CONSTRUCTION								
MILCON	0	0	0	0	0	0	0	
O&M								
1-Time Move	0	0	0	0	0	0	0	
MIL PERSONNEL								
Mil Moving	0	0	0	0	0	0	0	
OTHER								
Environmental	0	0	0	0	0	0	0	
1-Time Other	0	0	0	0	0	0	0	
TOTAL ONE-TIME	0	0	0	0	0	0	0	
RECURRINGSAVES ----- (\$K) -----	2006 ----	2007 ----	2008 ----	2009 ----	2010 ----	2011 ----	Total -----	Beyond -----
FAM HOUSE OPS	0	0	0	0	0	0	0	0
O&M								
Sustainment	0	0	59	59	59	59	236	69
Recap	27	27	27	27	27	27	163	27
BOS	0	0	63	63	63	63	252	63
Civ Salary	0	33	133	200	200	200	765	200
MIL PERSONNEL								
Off Salary	0	0	187	375	375	375	1,312	375
Enl Salary	0	494	2,925	4,861	4,861	4,861	18,004	4,861
House Allow	0	0	0	0	0	0	0	0
OTHER								
Procurement	0	0	0	0	0	0	0	0
Mission Activ	0	0	0	0	0	0	0	0
Misc Recur	0	0	0	0	0	0	0	0
TOTAL RECUR	27	555	3,395	5,585	5,585	5,585	20,733	5,596
TOTAL SAVINGS	27	555	3,395	5,585	5,585	5,585	20,733	5,596

Department : Army  
 Scenario File : E:\USA-0143v3 RC Transform in GA (AFRC FT Benning, GA)\Criterion 5-COBRA\AFRC Fort Benning, GAKw.CBR  
 Option Pkg Name: AFRC Fort Benning, GA  
 Std Fctrs File : D:\COBRA 6.10\Army COBRA 6.10\BRAC2005.SFF

ONE-TIME NET ---- (\$K) ----	2006	2007	2008	2009	2010	2011	Total	
CONSTRUCTION								
MILCON	1,472	16,356	0	0	0	0	17,828	
O&M								
Civ Retir/RIF	0	57	57	0	0	0	115	
Civ Moving	0	0	35	0	0	0	35	
Info Tech	0	0	0	0	0	0	0	
Other	4	7	10	0	0	0	22	
MIL PERSONNEL								
Mil Moving	0	48	219	0	0	0	267	
OTHER								
HAP / RSE	0	0	0	0	0	0	0	
Environmental	0	8	0	0	0	0	8	
Misn Contract	0	0	0	0	0	0	0	
1-Time Other	0	3,149	0	0	0	0	3,149	
TOTAL ONE-TIME	1,476	19,626	323	0	0	0	21,417	
RECURRING NET ---- (\$K) ----	2006	2007	2008	2009	2010	2011	Total	Beyond
FAM HOUSE OPS	0	0	0	0	0	0	0	0
O&M								
Sustainment	0	383	324	324	324	324	1,678	313
Recap	-27	131	131	131	131	131	631	131
BOS	0	-0	-63	-63	-63	-63	-252	-63
Civ Salary	0	-33	-133	-200	-200	-200	-765	-200
TRICARE	0	0	0	0	0	0	0	0
MIL PERSONNEL								
Mil Salary	0	-494	-3,113	-5,236	-5,236	-5,236	-19,316	-5,236
House Allow	0	0	0	0	0	0	0	0
OTHER								
Procurement	0	0	0	0	0	0	0	0
Mission Activ	0	0	0	0	0	0	0	0
Misc Recur	0	0	28	28	28	28	114	28
TOTAL RECUR	-27	-13	-2,825	-5,015	-5,015	-5,015	-17,911	-5,026
TOTAL NET COST	1,449	19,613	-2,502	-5,015	-5,015	-5,015	3,514	-5,026

Department : Army  
 Scenario File : E:\USA-0143v3 RC Transform in GA (AFRC FT Benning, GA)\Criterion 5-COBRA\AFRC Fort Benning, GAKw.CBR  
 Option Pkg Name: AFRC Fort Benning, GA  
 Std Fctrs File : D:\COBRA 6.10\Army COBRA 6.10\BRAC2005.SFF

Base: Columbus USARC, GA (13077)	2006	2007	2008	2009	2010	2011	Total
ONE-TIME COSTS	2006	2007	2008	2009	2010	2011	Total
-----(\$K)-----	----	----	----	----	----	----	-----
CONSTRUCTION							
MILCON	0	0	0	0	0	0	0
O&M							
CIV SALARY							
Civ RIFs	0	0	0	0	0	0	0
Civ Retire	0	0	0	0	0	0	0
CIV MOVING							
Per Diem	0	0	0	0	0	0	0
POV Miles	0	0	0	0	0	0	0
Home Purch	0	0	0	0	0	0	0
HHG	0	0	0	0	0	0	0
Misc	0	0	0	0	0	0	0
House Hunt	0	0	0	0	0	0	0
PPP	0	0	0	0	0	0	0
RITA	0	0	0	0	0	0	0
FREIGHT							
Packing	0	0	0	0	0	0	0
Freight	0	0	0	0	0	0	0
Vehicles	0	0	0	0	0	0	0
Unemployment	0	0	0	0	0	0	0
OTHER							
Info Tech	0	0	0	0	0	0	0
Prog Manage	2	2	1	0	0	0	6
Supt Contrac	0	0	0	0	0	0	0
Mothball	0	0	1	0	0	0	1
1-Time Move	0	0	0	0	0	0	0
MIL PERSONNEL							
MIL MOVING							
Per Diem	0	0	0	0	0	0	0
POV Miles	0	0	0	0	0	0	0
HHG	0	0	0	0	0	0	0
Misc	0	0	0	0	0	0	0
OTHER							
Elim PCS	0	0	49	0	0	0	49
OTHER							
HAP / RSE	0	0	0	0	0	0	0
Environmental	0	8	0	0	0	0	8
Misn Contract	0	0	0	0	0	0	0
1-Time Other	0	0	0	0	0	0	0
TOTAL ONE-TIME	2	10	52	0	0	0	64

Department : Army  
 Scenario File : E:\USA-0143v3 RC Transform in GA (AFRC FT Benning, GA)\Criterion 5-COBRA\AFRC Fort Benning, GAkw.CBR  
 Option Pkg Name: AFRC Fort Benning, GA  
 Std Fctrs File : D:\COBRA 6.10\Army COBRA 6.10\BRAC2005.SFF

Base: Columbus USARC, GA (13077)

RECURRINGCOSTS	2006	2007	2008	2009	2010	2011	Total	Beyond
----- (\$K) -----	----	----	----	----	----	----	-----	-----
O&M								
Sustainment	0	0	0	0	0	0	0	0
Recap	0	0	0	0	0	0	0	0
BOS	0	0	0	0	0	0	0	0
Civ Salary	0	0	0	0	0	0	0	0
TRICARE	0	0	0	0	0	0	0	0
MIL PERSONNEL								
Off Salary	0	0	0	0	0	0	0	0
Enl Salary	0	0	0	0	0	0	0	0
House Allow	0	0	0	0	0	0	0	0
OTHER								
Mission Activ	0	0	0	0	0	0	0	0
Misc Recur	0	0	0	0	0	0	0	0
TOTAL RECUR	0	0	0	0	0	0	0	0
TOTAL COSTS	2	10	52	0	0	0	64	0
ONE-TIME SAVES								
----- (\$K) -----	----	----	----	----	----	----	-----	-----
CONSTRUCTION								
MILCON	0	0	0	0	0	0	0	0
O&M								
1-Time Move	0	0	0	0	0	0	0	0
MIL PERSONNEL								
Mil Moving	0	0	0	0	0	0	0	0
OTHER								
Environmental	0	0	0	0	0	0	0	0
1-Time Other	0	0	0	0	0	0	0	0
TOTAL ONE-TIME	0	0	0	0	0	0	0	0
RECURRINGSAVES								
----- (\$K) -----	----	----	----	----	----	----	-----	-----
FAM HOUSE OPS	0	0	0	0	0	0	0	0
O&M								
Sustainment	0	0	23	23	23	23	91	27
Recap	10	10	10	10	10	10	63	10
BOS	0	0	25	25	25	25	100	25
Civ Salary	0	0	0	0	0	0	0	0
MIL PERSONNEL								
Off Salary	0	0	125	250	250	250	875	250
Enl Salary	0	0	288	577	577	577	2,019	577
House Allow	0	0	0	0	0	0	0	0
OTHER								
Procurement	0	0	0	0	0	0	0	0
Mission Activ	0	0	0	0	0	0	0	0
Misc Recur	0	0	0	0	0	0	0	0
TOTAL RECUR	10	10	472	885	885	885	3,148	889
TOTAL SAVINGS	10	10	472	885	885	885	3,148	889

Department : Army  
 Scenario File : E:\USA-0143v3 RC Transform in GA (AFRC FT Benning, GA)\Criterion 5-COBRA\AFRC Fort Benning, GAKw.CBR  
 Option Pkg Name: AFRC Fort Benning, GA  
 Std Fctrs File : D:\COBRA 6.10\Army COBRA 6.10\BRAC2005.SFF

Base: Columbus USARC, GA (13077)

ONE-TIME NET	2006	2007	2008	2009	2010	2011	Total	
-----(\$K)-----	----	----	----	----	----	----	-----	
CONSTRUCTION								
MILCON	0	0	0	0	0	0	0	
O&M								
Civ Retir/RIF	0	0	0	0	0	0	0	
Civ Moving	0	0	0	0	0	0	0	
Info Tech	0	0	0	0	0	0	0	
Other	2	2	3	0	0	0	7	
MIL PERSONNEL								
Mil Moving	0	0	49	0	0	0	49	
OTHER								
HAP / RSE	0	0	0	0	0	0	0	
Environmental	0	8	0	0	0	0	8	
Misn Contract	0	0	0	0	0	0	0	
1-Time Other	0	0	0	0	0	0	0	
TOTAL ONE-TIME	2	10	52	0	0	0	64	
RECURRING NET	2006	2007	2008	2009	2010	2011	Total	Beyond
-----(\$K)-----	----	----	----	----	----	----	-----	-----
FAM HOUSE OPS								
O&M	0	0	0	0	0	0	0	0
Sustainment	0	0	-23	-23	-23	-23	-91	-27
Recap	-10	-10	-10	-10	-10	-10	-63	-10
BOS	0	0	-25	-25	-25	-25	-100	-25
Civ Salary	0	0	0	0	0	0	0	0
TRICARE	0	0	0	0	0	0	0	0
MIL PERSONNEL								
Mil Salary	0	0	-413	-827	-827	-827	-2,893	-827
House Allow	0	0	0	0	0	0	0	0
OTHER								
Procurement	0	0	0	0	0	0	0	0
Mission Activ	0	0	0	0	0	0	0	0
Misc Recur	0	0	0	0	0	0	0	0
TOTAL RECUR	-10	-10	-472	-885	-885	-885	-3,148	-889
TOTAL NET COST	-8	-1	-420	-885	-885	-885	-3,083	-889



Department : Army  
 Scenario File : E:\USA-0143v3 RC Transform in GA (AFRC FT Benning, GA)\Criterion 5-COBRA\AFRC Fort Benning, GAKw.CBR  
 Option Pkg Name: AFRC Fort Benning, GA  
 Std Fctrs File : D:\COBRA 6.10\Army COBRA 6.10\BRAC2005.SFF

Base: FT Benning Bldg 4960, GA (13077)	2006	2007	2008	2009	2010	2011	Total
ONE-TIME COSTS	2006	2007	2008	2009	2010	2011	Total
-----(\$K)-----	----	----	----	----	----	----	-----
CONSTRUCTION							
MILCON	0	0	0	0	0	0	0
O&M							
CIV SALARY							
Civ RIFs	0	0	0	0	0	0	0
Civ Retire	0	0	0	0	0	0	0
CIV MOVING							
Per Diem	0	0	0	0	0	0	0
POV Miles	0	0	0	0	0	0	0
Home Purch	0	0	0	0	0	0	0
HHG	0	0	0	0	0	0	0
Misc	0	0	0	0	0	0	0
House Hunt	0	0	0	0	0	0	0
PPP	0	0	0	0	0	0	0
RITA	0	0	0	0	0	0	0
FREIGHT							
Packing	0	0	0	0	0	0	0
Freight	0	0	0	0	0	0	0
Vehicles	0	0	0	0	0	0	0
Unemployment	0	0	0	0	0	0	0
OTHER							
Info Tech	0	0	0	0	0	0	0
Prog Manage	0	0	0	0	0	0	0
Supt Contrac	0	0	0	0	0	0	0
Mothball	0	0	0	0	0	0	0
1-Time Move	0	0	0	0	0	0	0
MIL PERSONNEL							
MIL MOVING							
Per Diem	0	0	0	0	0	0	0
POV Miles	0	0	0	0	0	0	0
HHG	0	0	0	0	0	0	0
Misc	0	0	0	0	0	0	0
OTHER							
Elim PCS	0	0	0	0	0	0	0
OTHER							
HAP / RSE	0	0	0	0	0	0	0
Environmental	0	0	0	0	0	0	0
Misn Contract	0	0	0	0	0	0	0
1-Time Other	0	0	0	0	0	0	0
TOTAL ONE-TIME	0	0	0	0	0	0	0

Department : Army  
 Scenario File : E:\USA-0143v3 RC Transform in GA (AFRC FT Benning, GA)\Criterion 5-COBRA\AFRC Fort Benning, GAKw.CBR  
 Option Pkg Name: AFRC Fort Benning, GA  
 Std Fctrs File : D:\COBRA 6.10\Army COBRA 6.10\BRAC2005.SFF

Base: FT Benning Bldg 4960, GA (13077)

RECURRINGCOSTS	2006	2007	2008	2009	2010	2011	Total	Beyond
----- (\$K) -----	----	----	----	----	----	----	-----	-----
O&M								
Sustainment	0	0	0	0	0	0	0	0
Recap	0	0	0	0	0	0	0	0
BOS	0	0	0	0	0	0	0	0
Civ Salary	0	0	0	0	0	0	0	0
TRICARE	0	0	0	0	0	0	0	0
MIL PERSONNEL								
Off Salary	0	0	0	0	0	0	0	0
Enl Salary	0	0	0	0	0	0	0	0
House Allow	0	0	0	0	0	0	0	0
OTHER								
Mission Activ	0	0	0	0	0	0	0	0
Misc Recur	0	0	0	0	0	0	0	0
TOTAL RECUR	0	0	0	0	0	0	0	0
TOTAL COSTS	0	0	0	0	0	0	0	0
ONE-TIME SAVES								
----- (\$K) -----	2006	2007	2008	2009	2010	2011	Total	Beyond
----- (\$K) -----	----	----	----	----	----	----	-----	-----
CONSTRUCTION								
MILCON	0	0	0	0	0	0	0	0
O&M								
1-Time Move	0	0	0	0	0	0	0	0
MIL PERSONNEL								
Mil Moving	0	0	0	0	0	0	0	0
OTHER								
Environmental	0	0	0	0	0	0	0	0
1-Time Other	0	0	0	0	0	0	0	0
TOTAL ONE-TIME	0	0	0	0	0	0	0	0
RECURRINGSAVES								
----- (\$K) -----	2006	2007	2008	2009	2010	2011	Total	Beyond
----- (\$K) -----	----	----	----	----	----	----	-----	-----
FAM HOUSE OPS	0	0	0	0	0	0	0	0
O&M								
Sustainment	0	0	8	8	8	8	34	10
Recap	4	4	4	4	4	4	23	4
BOS	0	0	23	23	23	23	92	23
Civ Salary	0	0	0	0	0	0	0	0
MIL PERSONNEL								
Off Salary	0	0	0	0	0	0	0	0
Enl Salary	0	0	0	0	0	0	0	0
House Allow	0	0	0	0	0	0	0	0
OTHER								
Procurement	0	0	0	0	0	0	0	0
Mission Activ	0	0	0	0	0	0	0	0
Misc Recur	0	0	0	0	0	0	0	0
TOTAL RECUR	4	4	35	35	35	35	149	37
TOTAL SAVINGS	4	4	35	35	35	35	149	37

Department : Army  
 Scenario File : E:\USA-0143v3 RC Transform in GA (AFRC FT Benning, GA)\Criterion 5-COBRA\AFRC Fort Benning, GAKw.CBR  
 Option Pkg Name: AFRC Fort Benning, GA  
 Std Fctrs File : D:\COBRA 6.10\Army COBRA 6.10\BRAC2005.SFF

Base: FT Benning Bldg 4960, GA (13077)

ONE-TIME NET	2006	2007	2008	2009	2010	2011	Total	
-----(\$K)-----	----	----	----	----	----	----	-----	-----
<b>CONSTRUCTION</b>								
MILCON	0	0	0	0	0	0	0	
<b>O&amp;M</b>								
Civ Retir/RIF	0	0	0	0	0	0	0	
Civ Moving	0	0	0	0	0	0	0	
Info Tech	0	0	0	0	0	0	0	
Other	0	0	0	0	0	0	0	
<b>MIL PERSONNEL</b>								
Mil Moving	0	0	0	0	0	0	0	
<b>OTHER</b>								
HAP / RSE	0	0	0	0	0	0	0	
Environmental	0	0	0	0	0	0	0	
Misn Contract	0	0	0	0	0	0	0	
1-Time Other	0	0	0	0	0	0	0	
<b>TOTAL ONE-TIME</b>	<b>0</b>	<b>0</b>	<b>0</b>	<b>0</b>	<b>0</b>	<b>0</b>	<b>0</b>	
RECURRING NET	2006	2007	2008	2009	2010	2011	Total	Beyond
-----(\$K)-----	----	----	----	----	----	----	-----	-----
FAM HOUSE OPS	0	0	0	0	0	0	0	0
<b>O&amp;M</b>								
Sustainment	0	0	-8	-8	-8	-8	-34	-10
Recap	-4	-4	-4	-4	-4	-4	-23	-4
BOS	0	0	-23	-23	-23	-23	-92	-23
Civ Salary	0	0	0	0	0	0	0	0
TRICARE	0	0	0	0	0	0	0	0
<b>MIL PERSONNEL</b>								
Mil Salary	0	0	0	0	0	0	0	0
House Allow	0	0	0	0	0	0	0	0
<b>OTHER</b>								
Procurement	0	0	0	0	0	0	0	0
Mission Activ	0	0	0	0	0	0	0	0
Misc Recur	0	0	0	0	0	0	0	0
<b>TOTAL RECUR</b>	<b>-4</b>	<b>-4</b>	<b>-35</b>	<b>-35</b>	<b>-35</b>	<b>-35</b>	<b>-149</b>	<b>-37</b>
<b>TOTAL NET COST</b>	<b>-4</b>	<b>-4</b>	<b>-35</b>	<b>-35</b>	<b>-35</b>	<b>-35</b>	<b>-148</b>	<b>-37</b>

Department : Army  
 Scenario File : E:\USA-0143v3 RC Transform in GA (AFRC FT Benning, GA)\Criterion 5-COBRA\AFRC Fort Benning, GAKw.CBR  
 Option Pkg Name: AFRC Fort Benning, GA  
 Std Fctrs File : D:\COBRA 6.10\Army COBRA 6.10\BRAC2005.SFF

Base: FT Benning Bldg 15, GA (13077)	2006	2007	2008	2009	2010	2011	Total
ONE-TIME COSTS	2006	2007	2008	2009	2010	2011	Total
-----(\$K)-----	----	----	----	----	----	----	-----
CONSTRUCTION							
MILCON	0	0	0	0	0	0	0
O&M							
CIV SALARY							
Civ RIFs	0	57	57	0	0	0	115
Civ Retire	0	0	0	0	0	0	0
CIV MOVING							
Per Diem	0	0	0	0	0	0	0
POV Miles	0	0	0	0	0	0	0
Home Purch	0	0	0	0	0	0	0
HHG	0	0	0	0	0	0	0
Misc	0	0	0	0	0	0	0
House Hunt	0	0	0	0	0	0	0
PPP	0	0	35	0	0	0	35
RITA	0	0	0	0	0	0	0
FREIGHT							
Packing	0	0	0	0	0	0	0
Freight	0	0	0	0	0	0	0
Vehicles	0	0	0	0	0	0	0
Unemployment	0	4	4	0	0	0	9
OTHER							
Info Tech	0	0	0	0	0	0	0
Prog Manage	1	1	1	0	0	0	3
Supt Contract	0	0	0	0	0	0	0
Mothball	0	0	2	0	0	0	2
1-Time Move	0	0	0	0	0	0	0
MIL PERSONNEL							
MIL MOVING							
Per Diem	0	0	0	0	0	0	0
POV Miles	0	0	0	0	0	0	0
HHG	0	0	0	0	0	0	0
Misc	0	0	0	0	0	0	0
OTHER							
Elim PCS	0	48	170	0	0	0	218
OTHER							
HAP / RSE	0	0	0	0	0	0	0
Environmental	0	0	0	0	0	0	0
Misn Contract	0	0	0	0	0	0	0
1-Time Other	0	0	0	0	0	0	0
TOTAL ONE-TIME	1	111	270	0	0	0	383

Department : Army  
 Scenario File : E:\USA-0143v3 RC Transform in GA (AFRC FT Benning, GA)\Criterion 5-COBRA\AFRC Fort Benning, GAkw.CBR  
 Option Pkg Name: AFRC Fort Benning, GA  
 Std Fctrs File : D:\COBRA 6.10\Army COBRA 6.10\BRAC2005.SFF

Base: FT Benning Bldg 15, GA (13077)								
RECURRINGCOSTS	2006	2007	2008	2009	2010	2011	Total	Beyond
----- (\$K) -----	----	----	----	----	----	----	-----	-----
<b>O&amp;M</b>								
Sustainment	0	0	0	0	0	0	0	0
Recap	0	0	0	0	0	0	0	0
BOS	0	0	0	0	0	0	0	0
Civ Salary	0	0	0	0	0	0	0	0
TRICARE	0	0	0	0	0	0	0	0
<b>MIL PERSONNEL</b>								
Off Salary	0	0	0	0	0	0	0	0
Enl Salary	0	0	0	0	0	0	0	0
House Allow	0	0	0	0	0	0	0	0
<b>OTHER</b>								
Mission Activ	0	0	0	0	0	0	0	0
Misc Recur	0	0	0	0	0	0	0	0
TOTAL RECUR	0	0	0	0	0	0	0	0
<b>TOTAL COSTS</b>	<b>1</b>	<b>111</b>	<b>270</b>	<b>0</b>	<b>0</b>	<b>0</b>	<b>383</b>	<b>0</b>
<b>ONE-TIME SAVES</b>								
----- (\$K) -----	----	----	----	----	----	----	-----	-----
<b>CONSTRUCTION</b>								
MILCON	0	0	0	0	0	0	0	0
<b>O&amp;M</b>								
1-Time Move	0	0	0	0	0	0	0	0
<b>MIL PERSONNEL</b>								
Mil Moving	0	0	0	0	0	0	0	0
<b>OTHER</b>								
Environmental	0	0	0	0	0	0	0	0
1-Time Other	0	0	0	0	0	0	0	0
TOTAL ONE-TIME	0	0	0	0	0	0	0	0
<b>RECURRINGSAVES</b>								
----- (\$K) -----	----	----	----	----	----	----	-----	-----
FAM HOUSE OPS	0	0	0	0	0	0	0	0
<b>O&amp;M</b>								
Sustainment	0	0	28	28	28	28	111	33
Recap	13	13	13	13	13	13	77	13
BOS	0	0	15	15	15	15	60	15
Civ Salary	0	33	133	200	200	200	765	200
<b>MIL PERSONNEL</b>								
Off Salary	0	0	62	125	125	125	437	125
Enl Salary	0	494	2,637	4,285	4,285	4,285	15,985	4,285
House Allow	0	0	0	0	0	0	0	0
<b>OTHER</b>								
Procurement	0	0	0	0	0	0	0	0
Mission Activ	0	0	0	0	0	0	0	0
Misc Recur	0	0	0	0	0	0	0	0
TOTAL RECUR	13	540	2,888	4,665	4,665	4,665	17,437	4,670
<b>TOTAL SAVINGS</b>	<b>13</b>	<b>540</b>	<b>2,888</b>	<b>4,665</b>	<b>4,665</b>	<b>4,665</b>	<b>17,437</b>	<b>4,670</b>

Department : Army  
 Scenario File : E:\USA-0143v3 RC Transform in GA (AFRC FT Benning, GA)\Criterion 5-COBRA\AFRC Fort Benning, GAKw.CBR  
 Option Pkg Name: AFRC Fort Benning, GA  
 Std Fctrs File : D:\COBRA 6.10\Army COBRA 6.10\BRAC2005.SFF

Base: FT Benning Bldg 15, GA (13077)								
ONE-TIME NET	2006	2007	2008	2009	2010	2011	Total	
-----(\$K)-----	----	----	----	----	----	----	-----	
<b>CONSTRUCTION</b>								
MILCON	0	0	0	0	0	0	0	
<b>O&amp;M</b>								
Civ Retir/RIF	0	57	57	0	0	0	115	
Civ Moving	0	0	35	0	0	0	35	
Info Tech	0	0	0	0	0	0	0	
Other	1	5	7	0	0	0	14	
<b>MIL PERSONNEL</b>								
Mil Moving	0	48	170	0	0	0	218	
<b>OTHER</b>								
HAP / RSE	0	0	0	0	0	0	0	
Environmental	0	0	0	0	0	0	0	
Misn Contract	0	0	0	0	0	0	0	
1-Time Other	0	0	0	0	0	0	0	
<b>TOTAL ONE-TIME</b>	<b>1</b>	<b>111</b>	<b>270</b>	<b>0</b>	<b>0</b>	<b>0</b>	<b>383</b>	
<b>RECURRING NET</b>								
-----(\$K)-----	----	----	----	----	----	----	Total	Beyond
FAM HOUSE OPS	0	0	0	0	0	0	0	0
<b>O&amp;M</b>								
Sustainment	0	0	-28	-28	-28	-28	-111	-33
Recap	-13	-13	-13	-13	-13	-13	-77	-13
BOS	0	-0	-15	-15	-15	-15	-60	-15
Civ Salary	0	-33	-133	-200	-200	-200	-765	-200
TRICARE	0	0	0	0	0	0	0	0
<b>MIL PERSONNEL</b>								
Mil Salary	0	-494	-2,699	-4,410	-4,410	-4,410	-16,423	-4,410
House Allow	0	0	0	0	0	0	0	0
<b>OTHER</b>								
Procurement	0	0	0	0	0	0	0	0
Mission Activ	0	0	0	0	0	0	0	0
Misc Recur	0	0	0	0	0	0	0	0
<b>TOTAL RECUR</b>	<b>-13</b>	<b>-540</b>	<b>-2,888</b>	<b>-4,665</b>	<b>-4,665</b>	<b>-4,665</b>	<b>-17,437</b>	<b>-4,670</b>
<b>TOTAL NET COST</b>	<b>-11</b>	<b>-429</b>	<b>-2,618</b>	<b>-4,665</b>	<b>-4,665</b>	<b>-4,665</b>	<b>-17,054</b>	<b>-4,670</b>

Department : Army  
 Scenario File : E:\USA-0143v3 RC Transform in GA (AFRC FT Benning, GA)\Criterion 5-COBRA\AFRC Fort Benning, GAKw.CBR  
 Option Pkg Name: AFRC Fort Benning, GA  
 Std Fctrs File : D:\COBRA 6.10\Army COBRA 6.10\BRAC2005.SFF

Base: USARC Fort Benning, GA (13077)	2006	2007	2008	2009	2010	2011	Total
ONE-TIME COSTS	2006	2007	2008	2009	2010	2011	Total
-----(\$K)-----	----	----	----	----	----	----	-----
CONSTRUCTION							
MILCON	1,472	16,356	0	0	0	0	17,828
O&M							
CIV SALARY							
Civ RIFs	0	0	0	0	0	0	0
Civ Retire	0	0	0	0	0	0	0
CIV MOVING							
Per Diem	0	0	0	0	0	0	0
POV Miles	0	0	0	0	0	0	0
Home Purch	0	0	0	0	0	0	0
HHG	0	0	0	0	0	0	0
Misc	0	0	0	0	0	0	0
House Hunt	0	0	0	0	0	0	0
PPP	0	0	0	0	0	0	0
RITA	0	0	0	0	0	0	0
FREIGHT							
Packing	0	0	0	0	0	0	0
Freight	0	0	0	0	0	0	0
Vehicles	0	0	0	0	0	0	0
Unemployment	0	0	0	0	0	0	0
OTHER							
Info Tech	0	0	0	0	0	0	0
Prog Manage	0	0	0	0	0	0	0
Supt Contract	0	0	0	0	0	0	0
Mothball	0	0	0	0	0	0	0
1-Time Move	0	0	0	0	0	0	0
MIL PERSONNEL							
MIL MOVING							
Per Diem	0	0	0	0	0	0	0
POV Miles	0	0	0	0	0	0	0
HHG	0	0	0	0	0	0	0
Misc	0	0	0	0	0	0	0
OTHER							
Elim PCS	0	0	0	0	0	0	0
OTHER							
HAP / RSE	0	0	0	0	0	0	0
Environmental	0	0	0	0	0	0	0
Misn Contract	0	0	0	0	0	0	0
1-Time Other	0	3,149	0	0	0	0	3,149
TOTAL ONE-TIME	1,472	19,505	0	0	0	0	20,977

Department : Army  
 Scenario File : E:\USA-0143v3 RC Transform in GA (AFRC FT Benning, GA)\Criterion 5-COBRA\AFRC Fort Benning, GAKw.CBR  
 Option Pkg Name: AFRC Fort Benning, GA  
 Std Fctrs File : D:\COBRA 6.10\Army COBRA 6.10\BRAC2005.SFF

Base: USARC Fort Benning, GA (13077)								
RECURRINGCOSTS	2006	2007	2008	2009	2010	2011	Total	Beyond
-----(\$K)-----	----	----	----	----	----	----	-----	-----
O&M								
Sustainment	0	383	383	383	383	383	1,914	383
Recap	0	159	159	159	159	159	794	159
BOS	0	0	0	0	0	0	0	0
Civ Salary	0	0	0	0	0	0	0	0
TRICARE	0	0	0	0	0	0	0	0
MIL PERSONNEL								
Off Salary	0	0	0	0	0	0	0	0
Enl Salary	0	0	0	0	0	0	0	0
House Allow	0	0	0	0	0	0	0	0
OTHER								
Mission Activ	0	0	0	0	0	0	0	0
Misc Recur	0	0	28	28	28	28	114	28
TOTAL RECUR	0	542	570	570	570	570	2,822	570
TOTAL COSTS	1,472	20,047	570	570	570	570	23,799	570
ONE-TIME SAVES								
-----(\$K)-----	----	----	----	----	----	----	-----	-----
CONSTRUCTION								
MILCON	0	0	0	0	0	0	0	0
O&M								
1-Time Move	0	0	0	0	0	0	0	0
MIL PERSONNEL								
Mil Moving	0	0	0	0	0	0	0	0
OTHER								
Environmental	0	0	0	0	0	0	0	0
1-Time Other	0	0	0	0	0	0	0	0
TOTAL ONE-TIME	0	0	0	0	0	0	0	0
RECURRINGSAVES								
-----(\$K)-----	----	----	----	----	----	----	-----	-----
FAM HOUSE OPS	0	0	0	0	0	0	0	0
O&M								
Sustainment	0	0	0	0	0	0	0	0
Recap	0	0	0	0	0	0	0	0
BOS	0	0	0	0	0	0	0	0
Civ Salary	0	0	0	0	0	0	0	0
MIL PERSONNEL								
Off Salary	0	0	0	0	0	0	0	0
Enl Salary	0	0	0	0	0	0	0	0
House Allow	0	0	0	0	0	0	0	0
OTHER								
Procurement	0	0	0	0	0	0	0	0
Mission Activ	0	0	0	0	0	0	0	0
Misc Recur	0	0	0	0	0	0	0	0
TOTAL RECUR	0	0	0	0	0	0	0	0
TOTAL SAVINGS	0	0	0	0	0	0	0	0



Department : Army  
 Scenario File : E:\USA-0143v3 RC Transform in GA (AFRC FT Benning, GA)\Criterion 5-COBRA\AFRC Fort Benning, GAKw.CBR  
 Option Pkg Name: AFRC Fort Benning, GA  
 Std Fctrs File : D:\COBRA 6.10\Army COBRA 6.10\BRAC2005.SFF

Base: USARC Fort Benning, GA (13077)								
ONE-TIME NET	2006	2007	2008	2009	2010	2011	Total	
-----(\$K)-----	----	----	----	----	----	----	-----	
<b>CONSTRUCTION</b>								
MILCON	1,472	16,356	0	0	0	0	17,828	
<b>O&amp;M</b>								
Civ Retir/RIF	0	0	0	0	0	0	0	
Civ Moving	0	0	0	0	0	0	0	
Info Tech	0	0	0	0	0	0	0	
Other	0	0	0	0	0	0	0	
<b>MIL PERSONNEL</b>								
Mil Moving	0	0	0	0	0	0	0	
<b>OTHER</b>								
HAP / RSE	0	0	0	0	0	0	0	
Environmental	0	0	0	0	0	0	0	
Misn Contract	0	0	0	0	0	0	0	
1-Time Other	0	3,149	0	0	0	0	3,149	
<b>TOTAL ONE-TIME</b>	<b>1,472</b>	<b>19,505</b>	<b>0</b>	<b>0</b>	<b>0</b>	<b>0</b>	<b>20,977</b>	
RECURRING NET	2006	2007	2008	2009	2010	2011	Total	Beyond
-----(\$K)-----	----	----	----	----	----	----	-----	-----
FAM HOUSE OPS	0	0	0	0	0	0	0	0
<b>O&amp;M</b>								
Sustainment	0	383	383	383	383	383	1,914	383
Recap	0	159	159	159	159	159	794	159
BOS	0	0	0	0	0	0	0	0
Civ Salary	0	0	0	0	0	0	0	0
TRICARE	0	0	0	0	0	0	0	0
<b>MIL PERSONNEL</b>								
Mil Salary	0	0	0	0	0	0	0	0
House Allow	0	0	0	0	0	0	0	0
<b>OTHER</b>								
Procurement	0	0	0	0	0	0	0	0
Mission Activ	0	0	0	0	0	0	0	0
Misc Recur	0	0	28	28	28	28	114	28
<b>TOTAL RECUR</b>	<b>0</b>	<b>542</b>	<b>570</b>	<b>570</b>	<b>570</b>	<b>570</b>	<b>2,822</b>	<b>570</b>
<b>TOTAL NET COST</b>	<b>1,472</b>	<b>20,047</b>	<b>570</b>	<b>570</b>	<b>570</b>	<b>570</b>	<b>23,799</b>	<b>570</b>

COBRA ECONOMIC IMPACT REPORT (COBRA v6.10)  
 Data As Of 04/21/2005 15:46:38, Report Created 04/21/2005 15:54:37

Department : Army  
 Scenario File : E:\USA-0143v3 RC Transform in GA (AFRC FT Benning, GA)\Criterion 5-COBRA\AFRC Fort Benning, GAKw.CBR  
 Option Pkg Name: AFRC Fort Benning, GA  
 Std Fctrs File : D:\COBRA 6.10\Army COBRA 6.10\BRAC2005.SFF

Columbus USARC, GA (13077)

	2006	2007	2008	2009	2010	2011	Total
Jobs Gained-Mil	0	0	0	0	0	0	0
Jobs Lost-Mil	0	0	9	0	0	0	9
NET CHANGE-Mil	0	0	-9	0	0	0	-9
Jobs Gained-Civ	0	0	0	0	0	0	0
Jobs Lost-Civ	0	0	0	0	0	0	0
NET CHANGE-Civ	0	0	0	0	0	0	0
Jobs Gained-Stu	0	0	0	0	0	0	0
Jobs Lost-Stu	0	0	0	0	0	0	0
NET CHANGE-Stu	0	0	0	0	0	0	0

FT Benning Bldg 4960, GA (13077)

	2006	2007	2008	2009	2010	2011	Total
Jobs Gained-Mil	0	0	0	0	0	0	0
Jobs Lost-Mil	0	0	0	0	0	0	0
NET CHANGE-Mil	0	0	0	0	0	0	0
Jobs Gained-Civ	0	0	0	0	0	0	0
Jobs Lost-Civ	0	0	0	0	0	0	0
NET CHANGE-Civ	0	0	0	0	0	0	0
Jobs Gained-Stu	0	0	0	0	0	0	0
Jobs Lost-Stu	0	0	0	0	0	0	0
NET CHANGE-Stu	0	0	0	0	0	0	0

FT Benning Bldg 15, GA (13077)

	2006	2007	2008	2009	2010	2011	Total
Jobs Gained-Mil	0	0	0	0	0	0	0
Jobs Lost-Mil	0	12	41	0	0	0	53
NET CHANGE-Mil	0	-12	-41	0	0	0	-53
Jobs Gained-Civ	0	0	0	0	0	0	0
Jobs Lost-Civ	0	1	2	0	0	0	3
NET CHANGE-Civ	0	-1	-2	0	0	0	-3
Jobs Gained-Stu	0	0	0	0	0	0	0
Jobs Lost-Stu	0	0	0	0	0	0	0
NET CHANGE-Stu	0	0	0	0	0	0	0

USARC Fort Benning, GA (13077)

	2006	2007	2008	2009	2010	2011	Total
Jobs Gained-Mil	0	0	0	0	0	0	0
Jobs Lost-Mil	0	0	0	0	0	0	0
NET CHANGE-Mil	0	0	0	0	0	0	0
Jobs Gained-Civ	0	0	0	0	0	0	0
Jobs Lost-Civ	0	0	0	0	0	0	0
NET CHANGE-Civ	0	0	0	0	0	0	0
Jobs Gained-Stu	0	0	0	0	0	0	0
Jobs Lost-Stu	0	0	0	0	0	0	0
NET CHANGE-Stu	0	0	0	0	0	0	0

COBRA INPUT DATA REPORT (COBRA v6.10)  
 Data As Of 04/21/2005 15:46:38, Report Created 04/21/2005 15:54:37

Department : Army  
 Scenario File : E:\USA-0143v3 RC Transform in GA (AFRC FT Benning, GA)\Criterion 5-COBRA\AFRC Fort Benning, GAkw.CBR  
 Option Pkg Name: AFRC Fort Benning, GA  
 Std Fctrs File : D:\COBRA 6.10\Army COBRA 6.10\BRAC2005.SFF

INPUT SCREEN ONE - GENERAL SCENARIO INFORMATION

Model Year One : FY 2006  
 Model does Time-Phasing of Construction/Shutdown: No

Base Name, ST (Code)	Strategy:
-----	-----
Columbus USARC, GA (13077)	Closes in FY 2008
FT Benning Bldg 4960, GA (13077)	Closes in FY 2008
FT Benning Bldg 15, GA (13077)	Closes in FY 2008
USARC Fort Benning, GA (13077)	Realignment

INPUT SCREEN TWO - DISTANCE TABLE  
 (Only shows distances where personnel or equipment are moving)

Point A:	Point B:	Distance:
-----	-----	-----

INPUT SCREEN THREE - MOVEMENT TABLE

INPUT SCREEN FOUR - STATIC BASE INFORMATION

Name: Columbus USARC, GA (13077)

Total Officer Employees:	2	Base Service (for BOS/Sust):	Army
Total Enlisted Employees:	7	Total Sustainment (\$K/Year):	27
Total Student Employees:	0	Sustain Payroll (\$K/Year):	0
Total Civilian Employees:	0	BOS Non-Payroll (\$K/Year):	25
Accomp Mil not Receiving BAH:	0.0%	BOS Payroll (\$K/Year):	0
Officer Housing Units Avail:	0	Family Housing (\$K/Year):	0
Enlisted Housing Units Avail:	0	Installation PRV(\$K):	1,081
Starting Facilities(KSF):	8	Svc/Agcy Recap Rate (Years):	103
Officer BAH (\$/Month):	0	Homeowner Assistance Program:	No
Enlisted BAH (\$/Month):	0		
Civ Locality Pay Factor:	1.110	TRICARE	In-Pat Out-Pat
Area Cost Factor:	0.80		Admits Visits Prescrip
Per Diem Rate (\$/Day):	0	CostFactor	0.00 0.00 0.00
Freight Cost (\$/Ton/Mile):	0.00	Actv MTF	0 0 0
Vehicle Cost (\$/Lift/Mile):	0.00	Actv Purch	0 0 0
Latitude:	0.000000	Retiree	0 0 0
Longitude:	0.000000	Retiree65+	0 0 0

Department : Army  
 Scenario File : E:\USA-0143v3 RC Transform in GA (AFRC FT Benning, GA)\Criterion 5-COBRA\AFRC Fort Benning, GAkw.CBR  
 Option Pkg Name: AFRC Fort Benning, GA  
 Std Fctrs File : D:\COBRA 6.10\Army COBRA 6.10\BRAC2005.SFF

INPUT SCREEN FOUR - STATIC BASE INFORMATION

Name: FT Benning Bldg 4960, GA (13077)

Total Officer Employees:	0	Base Service (for BOS/Sust):	Army		
Total Enlisted Employees:	0	Total Sustainment (\$K/Year):	10		
Total Student Employees:	0	Sustain Payroll (\$K/Year):	0		
Total Civilian Employees:	0	BOS Non-Payroll (\$K/Year):	23		
Accomp Mil not Receiving BAH:	0.0%	BOS Payroll (\$K/Year):	0		
Officer Housing Units Avail:	0	Family Housing (\$K/Year):	0		
Enlisted Housing Units Avail:	0	Installation PRV(\$K):	402		
Starting Facilities(KSF):	3	Svc/Agcy Recap Rate (Years):	103		
Officer BAH (\$/Month):	0	Homeowner Assistance Program:	No		
Enlisted BAH (\$/Month):	0				
Civ Locality Pay Factor:	1.110	TRICARE	In-Pat	Out-Pat	
Area Cost Factor:	0.80		Admits	Visits	Prescrip
Per Diem Rate (\$/Day):	0	CostFactor	0.00	0.00	0.00
Freight Cost (\$/Ton/Mile):	0.00	Actv MTF	0	0	0
Vehicle Cost (\$/Lift/Mile):	0.00	Actv Purch	0	0	
Latitude:	0.000000	Retiree	0	0	0
Longitude:	0.000000	Retiree65+	0	0	0

Name: FT Benning Bldg 15, GA (13077)

Total Officer Employees:	1	Base Service (for BOS/Sust):	Army		
Total Enlisted Employees:	52	Total Sustainment (\$K/Year):	33		
Total Student Employees:	0	Sustain Payroll (\$K/Year):	0		
Total Civilian Employees:	3	BOS Non-Payroll (\$K/Year):	15		
Accomp Mil not Receiving BAH:	0.0%	BOS Payroll (\$K/Year):	0		
Officer Housing Units Avail:	0	Family Housing (\$K/Year):	0		
Enlisted Housing Units Avail:	0	Installation PRV(\$K):	1,321		
Starting Facilities(KSF):	10	Svc/Agcy Recap Rate (Years):	103		
Officer BAH (\$/Month):	0	Homeowner Assistance Program:	No		
Enlisted BAH (\$/Month):	0				
Civ Locality Pay Factor:	1.110	TRICARE	In-Pat	Out-Pat	
Area Cost Factor:	0.80		Admits	Visits	Prescrip
Per Diem Rate (\$/Day):	0	CostFactor	0.00	0.00	0.00
Freight Cost (\$/Ton/Mile):	0.00	Actv MTF	0	0	0
Vehicle Cost (\$/Lift/Mile):	0.00	Actv Purch	0	0	
Latitude:	0.000000	Retiree	0	0	0
Longitude:	0.000000	Retiree65+	0	0	0

Department : Army  
 Scenario File : E:\USA-0143v3 RC Transform in GA (AFRC FT Benning, GA)\Criterion 5-COBRA\AFRC Fort Benning, GAkw.CBR  
 Option Pkg Name: AFRC Fort Benning, GA  
 Std Fctrs File : D:\COBRA 6.10\Army COBRA 6.10\BRAC2005.SFF

INPUT SCREEN FOUR - STATIC BASE INFORMATION

Name: USARC Fort Benning, GA (13077)

Total Officer Employees:	0	Base Service (for BOS/Sust):	Army
Total Enlisted Employees:	0	Total Sustainment (\$K/Year):	0
Total Student Employees:	0	Sustain Payroll (\$K/Year):	0
Total Civilian Employees:	0	BOS Non-Payroll (\$K/Year):	0
Accomp Mil not Receiving BAH:	0.0%	BOS Payroll (\$K/Year):	0
Officer Housing Units Avail:	0	Family Housing (\$K/Year):	0
Enlisted Housing Units Avail:	0	Installation PRV(\$K):	0
Starting Facilities(KSF):	0	Svc/Agcy Recap Rate (Years):	103
Officer BAH (\$/Month):	0	Homeowner Assistance Program:	No
Enlisted BAH (\$/Month):	0		
Civ Locality Pay Factor:	1.110	TRICARE	In-Pat Out-Pat
Area Cost Factor:	0.80		Admits Visits Prescrip
Per Diem Rate (\$/Day):	0	CostFactor	0.00 0.00 0.00
Freight Cost (\$/Ton/Mile):	0.00	Actv MTF	0 0 0
Vehicle Cost (\$/Lift/Mile):	0.00	Actv Purch	0 0 0
Latitude:	0.000000	Retiree	0 0 0
Longitude:	0.000000	Retiree65+	0 0 0

INPUT SCREEN FIVE - DYNAMIC BASE INFORMATION

Name: Columbus USARC, GA (13077)

	2006	2007	2008	2009	2010	2011
	----	----	----	----	----	----
1-Time Unique Cost (\$K):	0	0	0	0	0	0
1-Time Unique Save (\$K):	0	0	0	0	0	0
1-Time Moving Cost (\$K):	0	0	0	0	0	0
1-Time Moving Save (\$K):	0	0	0	0	0	0
Env Non-MilCon Reqd(\$K):	0	8	0	0	0	0
Activ Mission Cost (\$K):	0	0	0	0	0	0
Activ Mission Save (\$K):	0	0	0	0	0	0
Misn Contract Start(\$K):	0	0	0	0	0	0
Misn Contract Term (\$K):	0	0	0	0	0	0
Supt Contract Term (\$K):	0	0	0	0	0	0
Misc Recurring Cost(\$K):	0	0	0	0	0	0
Misc Recurring Save(\$K):	0	0	0	0	0	0
One-Time IT Costs (\$K):	0	0	0	0	0	0
Construction Schedule(%):	0%	0%	100%	0%	0%	0%
Shutdown Schedule (%):	0%	0%	100%	0%	0%	0%
Misn Milcon Avoidnc(\$K):	0	0	0	0	0	0
Procurement Avoidnc(\$K):	0	0	0	0	0	0
MTF Closure Action:	None Fac ShDn(KSF):			8	FH ShDn:	0.000%

Department : Army  
 Scenario File : E:\USA-0143v3 RC Transform in GA (AFRC FT Benning, GA)\Criterion 5-COBRA\AFRC Fort Benning, GAKw.CBR  
 Option Pkg Name: AFRC Fort Benning, GA  
 Std Fctrs File : D:\COBRA 6.10\Army COBRA 6.10\BRAC2005.SFF

INPUT SCREEN FIVE - DYNAMIC BASE INFORMATION

Name: FT Benning Bldg 4960, GA (13077)

	2006	2007	2008	2009	2010	2011
	----	----	----	----	----	----
1-Time Unique Cost (\$K):	0	0	0	0	0	0
1-Time Unique Save (\$K):	0	0	0	0	0	0
1-Time Moving Cost (\$K):	0	0	0	0	0	0
1-Time Moving Save (\$K):	0	0	0	0	0	0
Env Non-MilCon Reqd(\$K):	0	0	0	0	0	0
Activ Mission Cost (\$K):	0	0	0	0	0	0
Activ Mission Save (\$K):	0	0	0	0	0	0
Misn Contract Start(\$K):	0	0	0	0	0	0
Misn Contract Term (\$K):	0	0	0	0	0	0
Supt Contract Term (\$K):	0	0	0	0	0	0
Misc Recurring Cost(\$K):	0	0	0	0	0	0
Misc Recurring Save(\$K):	0	0	0	0	0	0
One-Time IT Costs (\$K):	0	0	0	0	0	0
Construction Schedule(%):	0%	0%	100%	0%	0%	0%
Shutdown Schedule (%):	0%	0%	100%	0%	0%	0%
Misn Milcon Avoidnc(\$K):	0	0	0	0	0	0
Procurement Avoidnc(\$K):	0	0	0	0	0	0
MTF Closure Action:	None Fac ShDn(KSF):			3	FH ShDn:	0.000%

Name: FT Benning Bldg 15, GA (13077)

	2006	2007	2008	2009	2010	2011
	----	----	----	----	----	----
1-Time Unique Cost (\$K):	0	0	0	0	0	0
1-Time Unique Save (\$K):	0	0	0	0	0	0
1-Time Moving Cost (\$K):	0	0	0	0	0	0
1-Time Moving Save (\$K):	0	0	0	0	0	0
Env Non-MilCon Reqd(\$K):	0	0	0	0	0	0
Activ Mission Cost (\$K):	0	0	0	0	0	0
Activ Mission Save (\$K):	0	0	0	0	0	0
Misn Contract Start(\$K):	0	0	0	0	0	0
Misn Contract Term (\$K):	0	0	0	0	0	0
Supt Contract Term (\$K):	0	0	0	0	0	0
Misc Recurring Cost(\$K):	0	0	0	0	0	0
Misc Recurring Save(\$K):	0	0	0	0	0	0
One-Time IT Costs (\$K):	0	0	0	0	0	0
Construction Schedule(%):	0%	0%	100%	0%	0%	0%
Shutdown Schedule (%):	0%	0%	100%	0%	0%	0%
Misn Milcon Avoidnc(\$K):	0	0	0	0	0	0
Procurement Avoidnc(\$K):	0	0	0	0	0	0
MTF Closure Action:	None Fac ShDn(KSF):			10	FH ShDn:	0.000%

Department : Army  
 Scenario File : E:\USA-0143v3 RC Transform in GA (AFRC FT Benning, GA)\Criterion 5-COBRA\AFRC Fort Benning, GAKw.CBR  
 Option Pkg Name: AFRC Fort Benning, GA  
 Std Fctrs File : D:\COBRA 6.10\Army COBRA 6.10\BRAC2005.SFF

INPUT SCREEN FIVE - DYNAMIC BASE INFORMATION

Name: USARC Fort Benning, GA (13077)

	2006	2007	2008	2009	2010	2011
1-Time Unique Cost (\$K):	0	3,149	0	0	0	0
1-Time Unique Save (\$K):	0	0	0	0	0	0
1-Time Moving Cost (\$K):	0	0	0	0	0	0
1-Time Moving Save (\$K):	0	0	0	0	0	0
Env Non-MilCon Reqd(\$K):	0	0	0	0	0	0
Activ Mission Cost (\$K):	0	0	0	0	0	0
Activ Mission Save (\$K):	0	0	0	0	0	0
Misn Contract Start(\$K):	0	0	0	0	0	0
Misn Contract Term (\$K):	0	0	0	0	0	0
Supt Contract Term (\$K):	0	0	0	0	0	0
Misc Recurring Cost(\$K):	0	0	28	28	28	28
Misc Recurring Save(\$K):	0	0	0	0	0	0
One-Time IT Costs (\$K):	0	0	0	0	0	0
Construction Schedule(%):	0%	100%	0%	0%	0%	0%
Shutdown Schedule (%) :	0%	100%	0%	0%	0%	0%
Misn Milcon Avoidnc(\$K):	0	0	0	0	0	0
Procurement Avoidnc(\$K):	0	0	0	0	0	0
MTF Closure Action:	None Fac ShDn(KSF):			0	FH ShDn:	0.000%

INPUT SCREEN SIX - BASE PERSONNEL INFORMATION

Name: Columbus USARC, GA (13077)

	2006	2007	2008	2009	2010	2011
Off Scenario Change:	0	0	-2	0	0	0
Enl Scenario Change:	0	0	-7	0	0	0
Civ Scenario Change:	0	0	0	0	0	0
Off Prog nonBRAC Change:	0	0	0	0	0	0
Enl Prog nonBRAC Change:	0	0	0	0	0	0
Civ Prog nonBRAC Change:	0	0	0	0	0	0
Stu Prog nonBRAC Change:	0	0	0	0	0	0
Prog FH Privatization:	0%	0%	0%	0%	0%	0%

Name: FT Benning Bldg 15, GA (13077)

	2006	2007	2008	2009	2010	2011
Off Scenario Change:	0	0	-1	0	0	0
Enl Scenario Change:	0	-12	-40	0	0	0
Civ Scenario Change:	0	-1	-2	0	0	0
Off Prog nonBRAC Change:	0	0	0	0	0	0
Enl Prog nonBRAC Change:	0	0	0	0	0	0
Civ Prog nonBRAC Change:	0	0	0	0	0	0
Stu Prog nonBRAC Change:	0	0	0	0	0	0
Prog FH Privatization:	0%	0%	0%	0%	0%	0%

COBRA INPUT DATA REPORT (COBRA v6.10) - Page 6  
 Data As Of 04/21/2005 15:46:38, Report Created 04/21/2005 15:54:37

Department : Army  
 Scenario File : E:\USA-0143v3 RC Transform in GA (AFRC FT Benning, GA)\Criterion 5-COBRA\AFRC Fort Benning, GAKw.CBR  
 Option Pkg Name: AFRC Fort Benning, GA  
 Std Fctrs File : D:\COBRA 6.10\Army COBRA 6.10\BRAC2005.SFF

INPUT SCREEN SEVEN - BASE MILITARY CONSTRUCTION INFORMATION

Name: USARC Fort Benning, GA (13077)

FAC	UM	New MilCon	Rehab MilCon	TotCost(\$K)	FPG Con CF	FPG Sust CF
1714	SF	132,537	0 Default	0	137.77	4.15

STANDARD FACTORS SCREEN ONE - PERSONNEL

SF File Descrip:  
 Perc Officers Accompanied: 72.00% Priority Placement Program: 39.97%  
 Perc Enlisted Accompanied: 55.00% PPP Actions Involving PCS: 50.70%  
 Officer Salary(\$/Year): 124,971.93 Civilian PCS Costs (\$): 35,496.00  
 Enlisted Salary(\$/Year): 82,399.09 Home Sale Reimburse Rate: 10.00%  
 Civilian Salary(\$/Year): 59,959.18 Max Home Sale Reimburs(\$): 50,000.00  
 Avg Unemploy Cost(\$/Week): 272.90 Home Purch Reimburse Rate: 5.00%  
 Unemployment Eligibility(Weeks): 16 Max Home Purch Reimburs(\$): 25,000.00  
 Civilians Not Willing To Move: 6.00% Civilian Homeowning Rate: 68.40%  
 Civilian Turnover Rate: 9.16% HAP Home Value Reimburse Rate: 13.46%  
 Civilian Early Retire Rate: 8.10% HAP Homeowner Receiving Rate: 18.44%  
 Civilian Regular Retire Rate: 1.67% RSE Home Value Reimburse Rate: 0.00%  
 Civilian RIF Pay Factor: 86.32% RSE Homeowner Receiving Rate: 0.00%  
 Civ Early Retire Pay Factor: 18.03%

STANDARD FACTORS SCREEN TWO - FACILITIES

	Army	Navy	Air Force	Marines
Service Sustainment Rate	87.00%	93.00%	92.00%	97.00%
Unit Cost Adjustment (BOS)	10332.00	8879.00	3032.00	3904.00
Program Management Factor:	10.00	MilCon Site Prep Cost (\$/SF):	0.74	
Mothball (Close) (\$/SF):	0.18	MilCon Contingency Plan Rate:	5.00%	
Mothball (Deac/Realn) (\$/SF):	0.45	MilCon Design Rate (Medical):	13.00%	
Rehab vs. MilCon (Default):	47.00%	MilCon Design Rate (Other):	9.00%	
Rehab vs. MilCon (Red):	64.00%	MilCon SIOH Rate:	6.00%	
Rehab vs. MilCon (Amber):	29.00%	Discount Rate for NPV/Payback:	2.80%	

STANDARD FACTORS SCREEN THREE - TRANSPORTATION

Material/Assigned Mil (Lb):	710	Storage-In-Transit (\$/Pers):	373.76
HHG Per Off Accomp (Lb):	15,290.00	POV Reimburse(\$/Mile):	0.20
HHG Per Enl Accomp (Lb):	9,204.00	Air Transport (\$/Pass Mile):	0.20
HHG Per Off Unaccomp (Lb):	13,712.00	IT Connect (\$/Person):	200.00
HHG Per Enl Unaccomp (Lb):	6,960.00	Misc Exp(\$/Direct Employee):	1,000.00
HHG Per Civilian (Lb):	18,000.00	Avg Mil Tour Length (Months):	30.02
Total HHG Cost (\$/100Lb):	8.78	One-Time Off PCS Cost(\$):	10,477.58
Equip Pack & Crate(\$/Ton):	180.67	One-Time Enl PCS Cost(\$):	3,998.52



COBRA INPUT DATA REPORT (COBRA v6.10) - Page 7  
Data As Of 04/21/2005 15:46:38, Report Created 04/21/2005 15:54:37

Department : Army  
Scenario File : E:\USA-0143v3 RC Transform in GA (AFRC FT Benning, GA)\Criterion 5-COBRA\AFRC Fort Benning, GAKw.CBR  
Option Pkg Name: AFRC Fort Benning, GA  
Std Fctrs File : D:\COBRA 6.10\Army COBRA 6.10\BRAC2005.SFF

FOOTNOTES FOR SCREEN ONE

=====

PIMS #189 RC Transformation in Georgia (AFRC Fort Benning) USA # 143

Transform Reserve Component facilities in the State of Georgia through the following actions: Close the United States Army Reserve Center, Columbus, Georgia and relocate and consolidate those units together with Army Reserve Units currently on Fort Benning into a new United States Army Reserve Center on Fort Benning, Georgia.

FOOTNOTES FOR SCREEN FIVE

=====

\$28.5 K=75% BOS for closing facilities transferring to new facility

\$8K for EBS for Columbus USARC

No environmental costs allocated for AFRC Ft. Benning per integration memo. Environmental costs will be absorbed in the more comprehensive proposal involving Ft. Benning.

\$3148.9K one-time costs for utilities calculated using the Army's Support Utility Tool

FOOTNOTES FOR SCREEN SIX

=====

Personnel reductions due to TAA force structure changes.

Drilling Reserve Component Personnel reduction numbers are based on unit inactivations using a full time equivalent (FTE) formula. FTE = number of personnel x 65 days per year (48 IDT days plus 17 days of annual training) divided by 365 days. Officer and enlisted numbers are calculated separately.

FOOTNOTES FOR SCREEN SEVEN

=====

SF for new facility: Total SF (187,200) \*70.8% (7 units) = 132,537.6

New construction meets transformation objectives.

TOTAL COBRA MILITARY CONSTRUCTION ASSETS REPORT (COBRA v6.10)  
 Data As Of 04/21/2005 15:46:38, Report Created 04/21/2005 15:54:38

Department : Army  
 Scenario File : E:\USA-0143v3 RC Transform in GA (AFRC FT Benning, GA)\Criterion 5-COBRA\AFRC Fort Benning, GAKw.CBR  
 Option Pkg Name: AFRC Fort Benning, GA  
 Std Fctrs File : D:\COBRA 6.10\Army COBRA 6.10\BRAC2005.SFF

All values in 2005 Constant Dollars

Base Name	Total MilCon*	Milcon Cost Avoidance	Total Net Costs
Columbus USARC	0	0	0
FT Benning Bldg 4960	0	0	0
FT Benning Bldg 15	0	0	0
USARC Fort Benning	17,828,525	0	17,828,525
Totals:	17,828,525	0	17,828,525

\* All MilCon Costs include Design, Site Preparation, Contingency Planning, and SIOH Costs where applicable.

COBRA MILITARY CONSTRUCTION ASSETS REPORT (COBRA v6.10) - Page 2  
 Data As Of 04/21/2005 15:46:38, Report Created 04/21/2005 15:54:38

Department : Army  
 Scenario File : E:\USA-0143v3 RC Transform in GA (AFRC FT Benning, GA)\Criterion 5-COBRA\AFRC Fort Benning, GAkw.CBR  
 Option Pkg Name: AFRC Fort Benning, GA  
 Std Fctrs File : D:\COBRA 6.10\Army COBRA 6.10\BRAC2005.SFF

MilCon for Base: USARC Fort Benning, GA (13077)

All values in 2005 Constant Dollars (\$K)

FAC Title	UM	New MilCon	New Cost*	Using Rehab Rehab Type	Rehab Cost*	Total Cost*
1714 Reserve Component Training Facility	SF	132,537	17,828	0 Default	0	17,828
Total Construction Cost:						17,828
- Construction Cost Avoid:						0
Total Net Milcon Cost:						17,828

\* All MilCon Costs include Design, Site Preparation, Contingency Planning, and SIOH Costs where applicable.

COBRA NET PRESENT VALUES REPORT (COBRA v6.10)

Data As Of 04/21/2005 15:46:38, Report Created 04/21/2005 15:54:40

Department : Army  
 Scenario File : E:\USA-0143v3 RC Transform in GA (AFRC FT Benning, GA)\Criterion 5-COBRA\AFRC Fort Benning, GAKw.CBR  
 Option Pkg Name: AFRC Fort Benning, GA  
 Std Fctrs File : D:\COBRA 6.10\Army COBRA 6.10\BRAC2005.SFF

Year	Cost (\$)	Adjusted Cost (\$)	NPV (\$)
----	-----	-----	-----
2006	1,448,858	1,428,990	1,428,990
2007	19,612,936	18,817,110	20,246,100
2008	-2,502,158	-2,335,242	17,910,858
2009	-5,015,303	-4,553,248	13,357,610
2010	-5,015,303	-4,429,229	8,928,381
2011	-5,015,303	-4,308,589	4,619,792
2012	-5,025,728	-4,199,946	419,846
2013	-5,025,728	-4,085,551	-3,665,705
2014	-5,025,728	-3,974,271	-7,639,977
2015	-5,025,728	-3,866,023	-11,505,999
2016	-5,025,728	-3,760,722	-15,266,722
2017	-5,025,728	-3,658,290	-18,925,012
2018	-5,025,728	-3,558,648	-22,483,661
2019	-5,025,728	-3,461,720	-25,945,381
2020	-5,025,728	-3,367,432	-29,312,813
2021	-5,025,728	-3,275,712	-32,588,525
2022	-5,025,728	-3,186,490	-35,775,015
2023	-5,025,728	-3,099,699	-38,874,714
2024	-5,025,728	-3,015,271	-41,889,985
2025	-5,025,728	-2,933,143	-44,823,128

TOTAL COBRA ONE-TIME COST REPORT (COBRA v6.10) - Page 1/5  
 Data As Of 04/21/2005 15:46:38, Report Created 04/21/2005 15:54:39

Department : Army  
 Scenario File : E:\USA-0143v3 RC Transform in GA (AFRC FT Benning, GA)\Criterion 5-COBRA\AFRC Fort Benning, GAKw.CBR  
 Option Pkg Name: AFRC Fort Benning, GA  
 Std Fctrs File : D:\COBRA 6.10\Army COBRA 6.10\BRAC2005.SFF

(All values in 2005 Constant Dollars)

Category	Cost	Sub-Total
-----	----	-----
Construction		
Military Construction	17,828,525	
Total - Construction		17,828,525
Personnel		
Civilian RIF	114,900	
Civilian Early Retirement	0	
Eliminated Military PCS	267,345	
Unemployment	8,902	
Total - Personnel		391,147
Overhead		
Program Management Cost	9,250	
Support Contract Termination	0	
Mothball / Shutdown	3,744	
Total - Overhead		12,994
Moving		
Civilian Moving	0	
Civilian PPP	35,496	
Military Moving	0	
Freight	0	
Information Technologies	0	
One-Time Moving Costs	0	
Total - Moving		35,496
Other		
HAP / RSE	0	
Environmental Mitigation Costs	8,000	
Mission Contract Startup and Termination	0	
One-Time Unique Costs	3,148,900	
Total - Other		3,156,900
-----		
Total One-Time Costs		21,425,063
-----		
One-Time Savings		
Military Construction Cost Avoidances	0	
Military Moving	0	
One-Time Moving Savings	0	
Environmental Mitigation Savings	0	
One-Time Unique Savings	0	
-----		
Total One-Time Savings		0
-----		
Total Net One-Time Costs		21,425,063

COBRA ONE-TIME COST REPORT (COBRA v6.10) - Page 2/5  
 Data As Of 04/21/2005 15:46:38, Report Created 04/21/2005 15:54:39

Department : Army  
 Scenario File : E:\USA-0143v3 RC Transform in GA (AFRC FT Benning, GA)\Criterion 5-COBRA\AFRC Fort Benning, GAKw.CBR  
 Option Pkg Name: AFRC Fort Benning, GA  
 Std Fctrs File : D:\COBRA 6.10\Army COBRA 6.10\BRAC2005.SFF

Base: Columbus USARC, GA (13077)  
 (All values in 2005 Constant Dollars)

Category	Cost	Sub-Total
-----	----	-----
Construction		
Military Construction	0	
Total - Construction		0
Personnel		
Civilian RIF	0	
Civilian Early Retirement	0	
Eliminated Military PCS	48,945	
Unemployment	0	
Total - Personnel		48,945
Overhead		
Program Management Cost	5,781	
Support Contract Termination	0	
Mothball / Shutdown	1,440	
Total - Overhead		7,221
Moving		
Civilian Moving	0	
Civilian PPP	0	
Military Moving	0	
Freight	0	
Information Technologies	0	
One-Time Moving Costs	0	
Total - Moving		0
Other		
HAP / RSE	0	
Environmental Mitigation Costs	8,000	
Mission Contract Startup and Termination	0	
One-Time Unique Costs	0	
Total - Other		8,000
-----		
Total One-Time Costs		64,166
-----		
One-Time Savings		
Military Construction Cost Avoidances	0	
Military Moving	0	
One-Time Moving Savings	0	
Environmental Mitigation Savings	0	
One-Time Unique Savings	0	
-----		
Total One-Time Savings		0
-----		
Total Net One-Time Costs		64,166

COBRA ONE-TIME COST REPORT (COBRA v6.10) - Page 3/5  
 Data As Of 04/21/2005 15:46:38, Report Created 04/21/2005 15:54:39

Department : Army  
 Scenario File : E:\USA-0143v3 RC Transform in GA (AFRC FT Benning, GA)\Criterion 5-COBRA\AFRC Fort Benning, GAKw.CBR  
 Option Pkg Name: AFRC Fort Benning, GA  
 Std Fctrs File : D:\COBRA 6.10\Army COBRA 6.10\BRAC2005.SFF

Base: FT Benning Bldg 4960, GA (13077)  
 (All values in 2005 Constant Dollars)

Category	Cost	Sub-Total
-----	----	-----
Construction		
Military Construction	0	
Total - Construction		0
Personnel		
Civilian RIF	0	
Civilian Early Retirement	0	
Eliminated Military PCS	0	
Unemployment	0	
Total - Personnel		0
Overhead		
Program Management Cost	0	
Support Contract Termination	0	
Mothball / Shutdown	540	
Total - Overhead		540
Moving		
Civilian Moving	0	
Civilian PPP	0	
Military Moving	0	
Freight	0	
Information Technologies	0	
One-Time Moving Costs	0	
Total - Moving		0
Other		
HAP / RSE	0	
Environmental Mitigation Costs	0	
Mission Contract Startup and Termination	0	
One-Time Unique Costs	0	
Total - Other		0
-----		
Total One-Time Costs		540
-----		
One-Time Savings		
Military Construction Cost Avoidances	0	
Military Moving	0	
One-Time Moving Savings	0	
Environmental Mitigation Savings	0	
One-Time Unique Savings	0	
-----		
Total One-Time Savings		0
-----		
Total Net One-Time Costs		540

Department : Army  
 Scenario File : E:\USA-0143v3 RC Transform in GA (AFRC FT Benning, GA)\Criterion 5-COBRA\AFRC Fort Benning, GAKw.CBR  
 Option Pkg Name: AFRC Fort Benning, GA  
 Std Fctrs File : D:\COBRA 6.10\Army COBRA 6.10\BRAC2005.SFF

Base: FT Benning Bldg 15, GA (13077)  
 (All values in 2005 Constant Dollars)

Category	Cost	Sub-Total
-----	----	-----
Construction		
Military Construction	0	
Total - Construction		0
Personnel		
Civilian RIF	114,900	
Civilian Early Retirement	0	
Eliminated Military PCS	218,401	
Unemployment	8,902	
Total - Personnel		342,203
Overhead		
Program Management Cost	3,469	
Support Contract Termination	0	
Mothball / Shutdown	1,764	
Total - Overhead		5,233
Moving		
Civilian Moving	0	
Civilian PPP	35,496	
Military Moving	0	
Freight	0	
Information Technologies	0	
One-Time Moving Costs	0	
Total - Moving		35,496
Other		
HAP / RSE	0	
Environmental Mitigation Costs	0	
Mission Contract Startup and Termination	0	
One-Time Unique Costs	0	
Total - Other		0
-----		
Total One-Time Costs		382,931
-----		
One-Time Savings		
Military Construction Cost Avoidances	0	
Military Moving	0	
One-Time Moving Savings	0	
Environmental Mitigation Savings	0	
One-Time Unique Savings	0	
-----		
Total One-Time Savings		0
-----		
Total Net One-Time Costs		382,931



Department : Army  
 Scenario File : E:\USA-0143v3 RC Transform in GA (AFRC FT Benning, GA)\Criterion 5-COBRA\AFRC Fort Benning, GAKw.CBR  
 Option Pkg Name: AFRC Fort Benning, GA  
 Std Fctrs File : D:\COBRA 6.10\Army COBRA 6.10\BRAC2005.SFF

Base: USARC Fort Benning, GA (13077)  
 (All values in 2005 Constant Dollars)

Category	Cost	Sub-Total
-----	----	-----
Construction		
Military Construction	17,828,525	
Total - Construction		17,828,525
Personnel		
Civilian RIF	0	
Civilian Early Retirement	0	
Eliminated Military PCS	0	
Unemployment	0	
Total - Personnel		0
Overhead		
Program Management Cost	0	
Support Contract Termination	0	
Mothball / Shutdown	0	
Total - Overhead		0
Moving		
Civilian Moving	0	
Civilian PPP	0	
Military Moving	0	
Freight	0	
Information Technologies	0	
One-Time Moving Costs	0	
Total - Moving		0
Other		
HAP / RSE	0	
Environmental Mitigation Costs	0	
Mission Contract Startup and Termination	0	
One-Time Unique Costs	3,148,900	
Total - Other		3,148,900
-----		
Total One-Time Costs		20,977,425
-----		
One-Time Savings		
Military Construction Cost Avoidances	0	
Military Moving	0	
One-Time Moving Savings	0	
Environmental Mitigation Savings	0	
One-Time Unique Savings	0	
-----		
Total One-Time Savings		0
-----		
Total Net One-Time Costs		20,977,425

COBRA SUSTAINMENT/RECAP/BOS/HOUSING CHANGE REPORT (COBRA v6.10)  
 Data As Of 04/21/2005 15:46:38, Report Created 04/21/2005 15:54:39

Department : Army  
 Scenario File : E:\USA-0143v3 RC Transform in GA (AFRC FT Benning, GA)\Criterion 5-COBRA\AFRC Fort Benning, GAKw.CBR  
 Option Pkg Name: AFRC Fort Benning, GA  
 Std Fctrs File : D:\COBRA 6.10\Army COBRA 6.10\BRAC2005.SFF

Net Change(\$K)	2006	2007	2008	2009	2010	2011	Total	Beyond
Sustain Change	0	383	324	324	324	324	1,678	313
Recap Change	-27	131	131	131	131	131	631	131
BOS Change	0	-0	-63	-63	-63	-63	-252	-63
Housing Change	0	0	0	0	0	0	0	0
<b>TOTAL CHANGES</b>	<b>-27</b>	<b>514</b>	<b>392</b>	<b>392</b>	<b>392</b>	<b>392</b>	<b>2,056</b>	<b>382</b>

Columbus USARC, GA (13077)

Net Change(\$K)	2006	2007	2008	2009	2010	2011	Total	Beyond
Sustain Change	0	0	-23	-23	-23	-23	-91	-27
Recap Change	-10	-10	-10	-10	-10	-10	-63	-10
BOS Change	0	0	-25	-25	-25	-25	-100	-25
Housing Change	0	0	0	0	0	0	0	0
<b>TOTAL CHANGES</b>	<b>-10</b>	<b>-10</b>	<b>-58</b>	<b>-58</b>	<b>-58</b>	<b>-58</b>	<b>-254</b>	<b>-62</b>

FT Benning Bldg 4960, GA (13077)

Net Change(\$K)	2006	2007	2008	2009	2010	2011	Total	Beyond
Sustain Change	0	0	-8	-8	-8	-8	-34	-10
Recap Change	-4	-4	-4	-4	-4	-4	-23	-4
BOS Change	0	0	-23	-23	-23	-23	-92	-23
Housing Change	0	0	0	0	0	0	0	0
<b>TOTAL CHANGES</b>	<b>-4</b>	<b>-4</b>	<b>-35</b>	<b>-35</b>	<b>-35</b>	<b>-35</b>	<b>-149</b>	<b>-37</b>

FT Benning Bldg 15, GA (13077)

Net Change(\$K)	2006	2007	2008	2009	2010	2011	Total	Beyond
Sustain Change	0	0	-28	-28	-28	-28	-111	-33
Recap Change	-13	-13	-13	-13	-13	-13	-77	-13
BOS Change	0	-0	-15	-15	-15	-15	-60	-15
Housing Change	0	0	0	0	0	0	0	0
<b>TOTAL CHANGES</b>	<b>-13</b>	<b>-13</b>	<b>-56</b>	<b>-56</b>	<b>-56</b>	<b>-56</b>	<b>-248</b>	<b>-61</b>

USARC Fort Benning, GA (13077)

Net Change(\$K)	2006	2007	2008	2009	2010	2011	Total	Beyond
Sustain Change	0	383	383	383	383	383	1,914	383
Recap Change	0	159	159	159	159	159	794	159
BOS Change	0	0	0	0	0	0	0	0
Housing Change	0	0	0	0	0	0	0	0
<b>TOTAL CHANGES</b>	<b>0</b>	<b>542</b>	<b>542</b>	<b>542</b>	<b>542</b>	<b>542</b>	<b>2,708</b>	<b>542</b>

TOTAL COBRA PERSONNEL IMPACT REPORT (COBRA v6.10) - Page 1/5  
 Data As Of 04/21/2005 15:46:38, Report Created 04/21/2005 15:54:38

Department : Army  
 Scenario File : E:\USA-0143v3 RC Transform in GA (AFRC FT Benning, GA)\Criterion 5-COBRA\AFRC Fort Benning, GAkw.CBR  
 Option Pkg Name: AFRC Fort Benning, GA  
 Std Fctrs File : D:\COBRA 6.10\Army COBRA 6.10\BRAC2005.SFF

	Rate	2006	2007	2008	2009	2010	2011	Total
	----	----	----	----	----	----	----	-----
CIVILIAN POSITIONS REALIGNING OUT		0	0	0	0	0	0	0
Early Retirement*	8.10%	0	0	0	0	0	0	0
Regular Retirement*	1.67%	0	0	0	0	0	0	0
Civilian Turnover*	9.16%	0	0	0	0	0	0	0
Civs Not Moving (RIFs)*	6.00%	0	0	0	0	0	0	0
Civilians Moving (the remainder)		0	0	0	0	0	0	0
Civilian Positions Available		0	0	0	0	0	0	0
CIVILIAN POSITIONS ELIMINATED		0	1	2	0	0	0	3
Early Retirement	8.10%	0	0	0	0	0	0	0
Regular Retirement	1.67%	0	0	0	0	0	0	0
Civilian Turnover	9.16%	0	0	0	0	0	0	0
Civs Not Moving (RIFs)*	6.00%	0	0	0	0	0	0	0
Priority Placement#	39.97%	0	0	1	0	0	0	1
Civilians Available to Move		0	1	1	0	0	0	2
Civilians Moving		0	0	0	0	0	0	0
Civilian RIFs (the remainder)		0	1	1	0	0	0	2
CIVILIAN POSITIONS REALIGNING IN		0	0	0	0	0	0	0
Civilians Moving		0	0	0	0	0	0	0
New Civilians Hired		0	0	0	0	0	0	0
Other Civilian Additions		0	0	0	0	0	0	0
TOTAL CIVILIAN EARLY RETIREMENTS		0	0	0	0	0	0	0
TOTAL CIVILIAN RIFs		0	1	1	0	0	0	2
TOTAL CIVILIAN PRIORITY PLACEMENTS#		0	0	1	0	0	0	1
TOTAL CIVILIAN NEW HIRES		0	0	0	0	0	0	0

\* Early Retirements, Regular Retirements, Civilian Turnover, and Civilians Not Willing to Move are not applicable for moves under fifty miles.

# Not all Priority Placements involve a Permanent Change of Station. The rate of PPP placements involving a PCS is 50.70%

Department : Army  
 Scenario File : E:\USA-0143v3 RC Transform in GA (AFRC FT Benning, GA)\Criterion 5-COBRA\AFRC Fort Benning, GAkw.CBR  
 Option Pkg Name: AFRC Fort Benning, GA  
 Std Fctrs File : D:\COBRA 6.10\Army COBRA 6.10\BRAC2005.SFF

Base: Columbus USARC, GA (13077)	Rate	2006	2007	2008	2009	2010	2011	Total
CIVILIAN POSITIONS REALIGNING OUT		0	0	0	0	0	0	0
Early Retirement*	8.10%	0	0	0	0	0	0	0
Regular Retirement*	1.67%	0	0	0	0	0	0	0
Civilian Turnover*	9.16%	0	0	0	0	0	0	0
Civs Not Moving (RIFs)*	6.00%	0	0	0	0	0	0	0
Civilians Moving (the remainder)		0	0	0	0	0	0	0
Civilian Positions Available		0	0	0	0	0	0	0
CIVILIAN POSITIONS ELIMINATED		0	0	0	0	0	0	0
Early Retirement	8.10%	0	0	0	0	0	0	0
Regular Retirement	1.67%	0	0	0	0	0	0	0
Civilian Turnover	9.16%	0	0	0	0	0	0	0
Civs Not Moving (RIFs)*	6.00%	0	0	0	0	0	0	0
Priority Placement#	39.97%	0	0	0	0	0	0	0
Civilians Available to Move		0	0	0	0	0	0	0
Civilians Moving		0	0	0	0	0	0	0
Civilian RIFs (the remainder)		0	0	0	0	0	0	0
CIVILIAN POSITIONS REALIGNING IN		0	0	0	0	0	0	0
Civilians Moving		0	0	0	0	0	0	0
New Civilians Hired		0	0	0	0	0	0	0
Other Civilian Additions		0	0	0	0	0	0	0
TOTAL CIVILIAN EARLY RETIRMENTS		0	0	0	0	0	0	0
TOTAL CIVILIAN RIFs		0	0	0	0	0	0	0
TOTAL CIVILIAN PRIORITY PLACEMENTS#		0	0	0	0	0	0	0
TOTAL CIVILIAN NEW HIRES		0	0	0	0	0	0	0

\* Early Retirements, Regular Retirements, Civilian Turnover, and Civilians Not Willing to Move are not applicable for moves under fifty miles.

# Not all Priority Placements involve a Permanent Change of Station. The rate of PPP placements involving a PCS is 50.70%

Department : Army  
 Scenario File : E:\USA-0143v3 RC Transform in GA (AFRC FT Benning, GA)\Criterion 5-COBRA\AFRC Fort Benning, GAkw.CBR  
 Option Pkg Name: AFRC Fort Benning, GA  
 Std Fctrs File : D:\COBRA 6.10\Army COBRA 6.10\BRAC2005.SFF

Base: FT Benning Bldg 4960, GA (13077)	Rate	2006	2007	2008	2009	2010	2011	Total
CIVILIAN POSITIONS REALIGNING OUT		0	0	0	0	0	0	0
Early Retirement*	8.10%	0	0	0	0	0	0	0
Regular Retirement*	1.67%	0	0	0	0	0	0	0
Civilian Turnover*	9.16%	0	0	0	0	0	0	0
Civs Not Moving (RIFs)*	6.00%	0	0	0	0	0	0	0
Civilians Moving (the remainder)		0	0	0	0	0	0	0
Civilian Positions Available		0	0	0	0	0	0	0
CIVILIAN POSITIONS ELIMINATED		0	0	0	0	0	0	0
Early Retirement	8.10%	0	0	0	0	0	0	0
Regular Retirement	1.67%	0	0	0	0	0	0	0
Civilian Turnover	9.16%	0	0	0	0	0	0	0
Civs Not Moving (RIFs)*	6.00%	0	0	0	0	0	0	0
Priority Placement#	39.97%	0	0	0	0	0	0	0
Civilians Available to Move		0	0	0	0	0	0	0
Civilians Moving		0	0	0	0	0	0	0
Civilian RIFs (the remainder)		0	0	0	0	0	0	0
CIVILIAN POSITIONS REALIGNING IN		0	0	0	0	0	0	0
Civilians Moving		0	0	0	0	0	0	0
New Civilians Hired		0	0	0	0	0	0	0
Other Civilian Additions		0	0	0	0	0	0	0
TOTAL CIVILIAN EARLY RETIRMENTS		0	0	0	0	0	0	0
TOTAL CIVILIAN RIFS		0	0	0	0	0	0	0
TOTAL CIVILIAN PRIORITY PLACEMENTS#		0	0	0	0	0	0	0
TOTAL CIVILIAN NEW HIRES		0	0	0	0	0	0	0

\* Early Retirements, Regular Retirements, Civilian Turnover, and Civilians Not Willing to Move are not applicable for moves under fifty miles.

# Not all Priority Placements involve a Permanent Change of Station. The rate of PPP placements involving a PCS is 50.70%

Department : Army  
 Scenario File : E:\USA-0143v3 RC Transform in GA (AFRC FT Benning, GA)\Criterion 5-COBRA\AFRC Fort Benning, GAkw.CBR  
 Option Pkg Name: AFRC Fort Benning, GA  
 Std Fctrs File : D:\COBRA 6.10\Army COBRA 6.10\BRAC2005.SFF

Base: FT Benning Bldg 15, GA (13077)	Rate	2006	2007	2008	2009	2010	2011	Total
CIVILIAN POSITIONS REALIGNING OUT		0	0	0	0	0	0	0
Early Retirement*	8.10%	0	0	0	0	0	0	0
Regular Retirement*	1.67%	0	0	0	0	0	0	0
Civilian Turnover*	9.16%	0	0	0	0	0	0	0
Civs Not Moving (RIFs)*	6.00%	0	0	0	0	0	0	0
Civilians Moving (the remainder)		0	0	0	0	0	0	0
Civilian Positions Available		0	0	0	0	0	0	0
CIVILIAN POSITIONS ELIMINATED		0	1	2	0	0	0	3
Early Retirement	8.10%	0	0	0	0	0	0	0
Regular Retirement	1.67%	0	0	0	0	0	0	0
Civilian Turnover	9.16%	0	0	0	0	0	0	0
Civs Not Moving (RIFs)*	6.00%	0	0	0	0	0	0	0
Priority Placement#	39.97%	0	0	1	0	0	0	1
Civilians Available to Move		0	1	1	0	0	0	2
Civilians Moving		0	0	0	0	0	0	0
Civilian RIFs (the remainder)		0	1	1	0	0	0	2
CIVILIAN POSITIONS REALIGNING IN		0	0	0	0	0	0	0
Civilians Moving		0	0	0	0	0	0	0
New Civilians Hired		0	0	0	0	0	0	0
Other Civilian Additions		0	0	0	0	0	0	0
TOTAL CIVILIAN EARLY RETIRMENTS		0	0	0	0	0	0	0
TOTAL CIVILIAN RIFs		0	1	1	0	0	0	2
TOTAL CIVILIAN PRIORITY PLACEMENTS#		0	0	1	0	0	0	1
TOTAL CIVILIAN NEW HIRES		0	0	0	0	0	0	0

\* Early Retirements, Regular Retirements, Civilian Turnover, and Civilians Not Willing to Move are not applicable for moves under fifty miles.

# Not all Priority Placements involve a Permanent Change of Station. The rate of PPP placements involving a PCS is 50.70%

Department : Army  
 Scenario File : E:\USA-0143v3 RC Transform in GA (AFRC FT Benning, GA)\Criterion 5-COBRA\AFRC Fort Benning, GAkw.CBR  
 Option Pkg Name: AFRC Fort Benning, GA  
 Std Fctrs File : D:\COBRA 6.10\Army COBRA 6.10\BRAC2005.SFF

Base: USARC Fort Benning, GA (13077)	Rate	2006	2007	2008	2009	2010	2011	Total
CIVILIAN POSITIONS REALIGNING OUT		0	0	0	0	0	0	0
Early Retirement*	8.10%	0	0	0	0	0	0	0
Regular Retirement*	1.67%	0	0	0	0	0	0	0
Civilian Turnover*	9.16%	0	0	0	0	0	0	0
Civs Not Moving (RIFs)*	6.00%	0	0	0	0	0	0	0
Civilians Moving (the remainder)		0	0	0	0	0	0	0
Civilian Positions Available		0	0	0	0	0	0	0
CIVILIAN POSITIONS ELIMINATED		0	0	0	0	0	0	0
Early Retirement	8.10%	0	0	0	0	0	0	0
Regular Retirement	1.67%	0	0	0	0	0	0	0
Civilian Turnover	9.16%	0	0	0	0	0	0	0
Civs Not Moving (RIFs)*	6.00%	0	0	0	0	0	0	0
Priority Placement#	39.97%	0	0	0	0	0	0	0
Civilians Available to Move		0	0	0	0	0	0	0
Civilians Moving		0	0	0	0	0	0	0
Civilian RIFs (the remainder)		0	0	0	0	0	0	0
CIVILIAN POSITIONS REALIGNING IN		0	0	0	0	0	0	0
Civilians Moving		0	0	0	0	0	0	0
New Civilians Hired		0	0	0	0	0	0	0
Other Civilian Additions		0	0	0	0	0	0	0
TOTAL CIVILIAN EARLY RETIRMENTS		0	0	0	0	0	0	0
TOTAL CIVILIAN RIFs		0	0	0	0	0	0	0
TOTAL CIVILIAN PRIORITY PLACEMENTS#		0	0	0	0	0	0	0
TOTAL CIVILIAN NEW HIRES		0	0	0	0	0	0	0

\* Early Retirements, Regular Retirements, Civilian Turnover, and Civilians Not Willing to Move are not applicable for moves under fifty miles.

# Not all Priority Placements involve a Permanent Change of Station. The rate of PPP placements involving a PCS is 50.70%

COBRA TOTAL PERSONNEL SUMMARY REPORT (COBRA v6.10)  
 Data As Of 04/21/2005 15:46:38, Report Created 04/21/2005 15:54:38

Department : Army  
 Scenario File : E:\USA-0143v3 RC Transform in GA (AFRC FT Benning, GA)\Criterion 5-COBRA\AFRC Fort Benning, GAKw.CBR  
 Option Pkg Name: AFRC Fort Benning, GA  
 Std Fctrs File : D:\COBRA 6.10\Army COBRA 6.10\BRAC2005.SFF

TOTAL SCENARIO POPULATION (FY 2005, Prior to BRAC Action):

Officers	Enlisted	Students	Civilians
3	59	0	3

TOTAL PERSONNEL REALIGNMENTS, ENTIRE SCENARIO):

	2006	2007	2008	2009	2010	2011	Total
Officers	0	0	0	0	0	0	0
Enlisted	0	0	0	0	0	0	0
Students	0	0	0	0	0	0	0
Civilians	0	0	0	0	0	0	0
TOTAL	0	0	0	0	0	0	0

TOTAL SCENARIO POSITION CHANGES, ENTIRE SCENARIO:

	2006	2007	2008	2009	2010	2011	Total
Officers	0	0	-3	0	0	0	-3
Enlisted	0	-12	-47	0	0	0	-59
Civilians	0	-1	-2	0	0	0	-3
TOTAL	0	-13	-52	0	0	0	-65

TOTAL SCENARIO POPULATION (After BRAC Action):

Officers	Enlisted	Students	Civilians
0	0	0	0



Department : Army  
 Scenario File : E:\USA-0143v3 RC Transform in GA (AFRC FT Benning, GA)\Criterion 5-COBRA\AFRC Fort Benning, GAKw.CBR  
 Option Pkg Name: AFRC Fort Benning, GA  
 Std Fctrs File : D:\COBRA 6.10\Army COBRA 6.10\BRAC2005.SFF

PERSONNEL SUMMARY FOR: Columbus USARC, GA (13077)

BASE POPULATION (FY 2005, Prior to BRAC Action) FOR: Columbus USARC, GA (13077)

Officers	Enlisted	Students	Civilians
2	7	0	0

SCENARIO POSITION CHANGES FOR: Columbus USARC, GA (13077)

	2006	2007	2008	2009	2010	2011	Total
Officers	0	0	-2	0	0	0	-2
Enlisted	0	0	-7	0	0	0	-7
Civilians	0	0	0	0	0	0	0
TOTAL	0	0	-9	0	0	0	-9

BASE POPULATION (After BRAC Action) FOR: Columbus USARC, GA (13077)

Officers	Enlisted	Students	Civilians
0	0	0	0

PERSONNEL SUMMARY FOR: FT Benning Bldg 4960, GA (13077)

BASE POPULATION (FY 2005, Prior to BRAC Action) FOR: FT Benning Bldg 4960, GA (13077)

Officers	Enlisted	Students	Civilians
0	0	0	0

BASE POPULATION (After BRAC Action) FOR: FT Benning Bldg 4960, GA (13077)

Officers	Enlisted	Students	Civilians
0	0	0	0

PERSONNEL SUMMARY FOR: FT Benning Bldg 15, GA (13077)

BASE POPULATION (FY 2005, Prior to BRAC Action) FOR: FT Benning Bldg 15, GA (13077)

Officers	Enlisted	Students	Civilians
1	52	0	3

SCENARIO POSITION CHANGES FOR: FT Benning Bldg 15, GA (13077)

	2006	2007	2008	2009	2010	2011	Total
Officers	0	0	-1	0	0	0	-1
Enlisted	0	-12	-40	0	0	0	-52
Civilians	0	-1	-2	0	0	0	-3
TOTAL	0	-13	-43	0	0	0	-56

BASE POPULATION (After BRAC Action) FOR: FT Benning Bldg 15, GA (13077)

Officers	Enlisted	Students	Civilians
0	0	0	0

PERSONNEL SUMMARY FOR: USARC Fort Benning, GA (13077)

BASE POPULATION (FY 2005, Prior to BRAC Action) FOR: USARC Fort Benning, GA (13077)

Officers	Enlisted	Students	Civilians
0	0	0	0

BASE POPULATION (After BRAC Action) FOR: USARC Fort Benning, GA (13077)

Officers	Enlisted	Students	Civilians
0	0	0	0



# Economic Impact Report

This report depicts the economic impact of the following Scenarios:

USA-0143: RC Trans in GA (Benning)

The data in this report is rolled up by Action

ECONOMIC IMPACT DATA

**Scenario:** RC Trans in GA (Benning)  
**Economic Region of Influence(ROI):** Columbus, GA-AL Metropolitan Statistical Area  
**Base:** BENNING  
**Action:** Ft. Benning BLDG 15, GA

**Overall Economic Impact of Proposed BRAC-05 Action:**

ROI Population (2002):	286,114
ROI Employment (2002):	163,565
Authorized Manpower (2005):	30,196
Authorized Manpower(2005) / ROI Employment(2002):	18.46%
Total Estimated Job Change:	-103
Total Estimated Job Change / ROI Employment(2002):	-0.06%

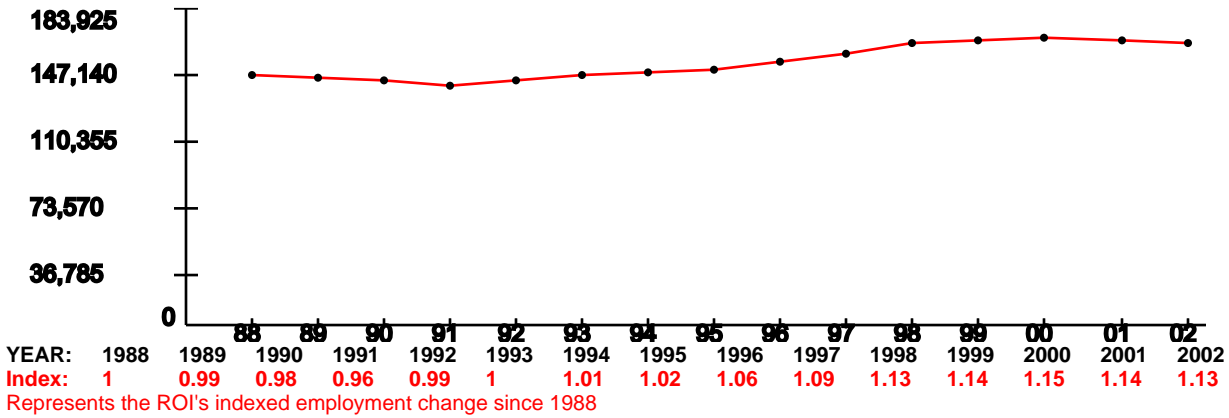
**Cumulative Job Change (Gain/Loss) Over Time:**



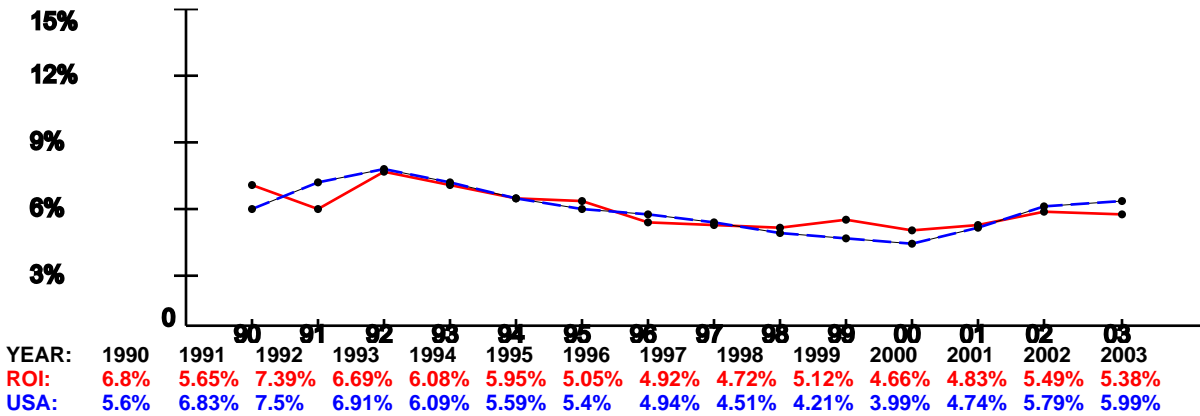
YEAR:	2006	2007	2008	2009	2010	2011
Direct Military:	0	-12	-50	0	0	0
Direct Civllian:	0	-1	-2	0	0	0
Direct Student:	0	0	0	0	0	0
Direct Contractor:	0	0	0	0	0	0
<b>Cumulative Direct:</b>	<b>0</b>	<b>-13</b>	<b>-65</b>	<b>-65</b>	<b>-65</b>	<b>-65</b>
<b>Cum Indir/Induc:</b>	<b>0</b>	<b>-8</b>	<b>-38</b>	<b>-38</b>	<b>-38</b>	<b>-38</b>
<b>Cumulative Total:</b>	<b>0</b>	<b>-21</b>	<b>-103</b>	<b>-103</b>	<b>-103</b>	<b>-103</b>

Columbus, GA-AL Metropolitan Statistical Area Trend Data

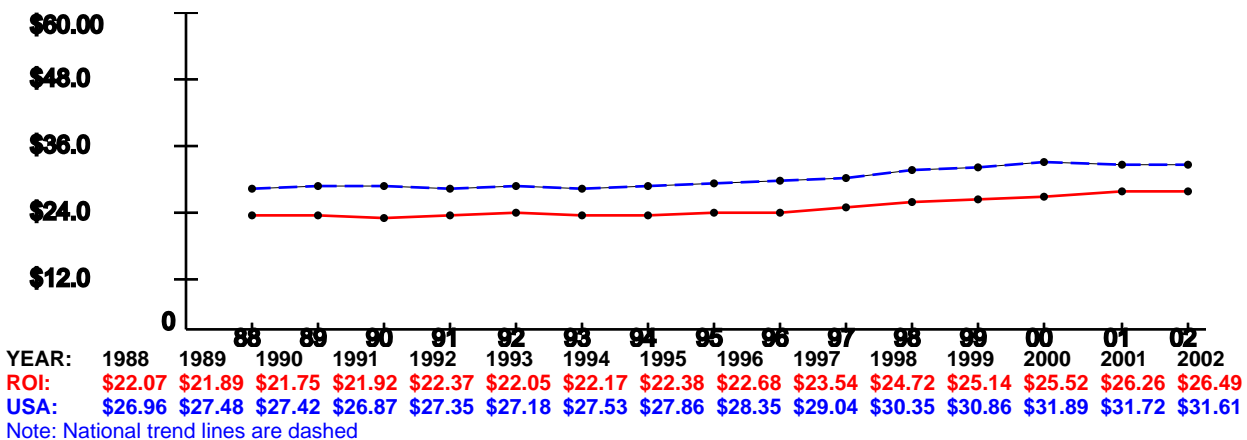
**Employment Trend (1988-2002)**



**Unemployment Percentage Trend (1990-2003)**



**Per Capita Income x \$1,000 (1988-2002)**



*This document may contain information protected from disclosure by public law, regulations or orders.*

## **FORT BENNING, GA (Proxy for AFRC Fort Benning, USARC Fort Benning, USARC Columbus, and Fort Benning Bldgs #4960 and #15)**

### **Demographics**

The following tables provide a short description of the area near the installation/activity. FORT BENNING is within Columbus, GA, the nearest city with a population of 100,000 or more. The nearest metropolitan statistical area (MSA) is

MSA	Population
COLUMBUS MSA	274,624

The following entities comprise the military housing area (MHA):

County/City	Population
Chattahoochee	14882
Harris	23695
Muscogee	186291
Russell	49756
Total	274,624

### **Child Care**

This attribute captures the number of nationally accredited child-care centers within the local community: 4

### **Cost of Living**

Cost of Living provides a relative measure of cost of living in the local community. General Schedule (GS) Locality pay provides a relative scale to compare local salaries with government salaries and Basic Allowance for Housing (BAH) is an indicator of the local rental market. In-state tuition is an indicator of the support provided by the state for active duty family members to participate in higher-level education opportunities. For median household income and house value, the basis of the data (either MSA or number of counties in the MHA or the county of the installation) is indicated.

Median Household Income	(US Avg \$41,994)	\$34,512	Basis: MSA
Median House Value	(US Avg \$119,600)	\$84,000	
GS Locality Pay	("Rest of US" 10.9%)	13.1%	
O-3 with Dependents BAH Rate		\$1,152	
In-state Tuition for Family Member		Yes	
In-state Tuition Continues if Member PCSs Out of State		Yes	

*This document may contain information protected from disclosure by public law, regulations or orders.*

## Education

This attribute defines the population in local school districts and identifies capacity. The pupil/teacher ratio, graduation rate, and composite SAT I/ACT scores provide a relative quality indicator of education. This attribute also attempts to give communities credit for the potential intellectual capital they provide.

NOTE: “MFR”--means a Memorandum For Record is on file at the installation/activity/agency to document problems in obtaining the required information. Reasons for not being able to obtain information may be that the school district refused to provide the information or the school district does not use or track the information. For each entry, the number of school districts for which data are available of the total number of school districts reported, and the number of MFRs is indicated.

		Basis
School District(s) Capacity	51,775	5 of 5 districts
Students Enrolled	48,317	5 of 5 districts
Average Pupil/Teacher Ratio	14.7:1	5 of 5 districts
High School Students Enrolled	15,908	5 of 5 districts
Average High School Graduation Rate (US Avg 67.3%)	71.0%	5 of 5 districts
Average Composite SAT I Score (US Avg 1026)	926	2 of 5 districts, 3 MFRs
Average ACT Score (US Avg 20.8)	18	5 of 5 districts
Available Graduate/PhD Programs	6	
Available Colleges and/or Universities	10	
Available Vocational and/or Technical Schools	2	

## Employment

Unemployment and job growth rates provide an indicator of job availability in the local community. National rates from the Bureau of Labor Statistics are also provided. For each entry, the basis of the data (either MSA or number of counties in the MHA or the county of the installation) is indicated.

The unemployment rates for the last five years:

	1999	2000	2001	2002	2003
Local Data	5.1%	4.7%	4.8%	5.5%	5.4%
National	4.2%	4.0%	4.7%	5.8%	6.0%
Basis:	MSA	MSA	MSA	MSA	MSA

*This document may contain information protected from disclosure by public law, regulations or orders.*

The annual job growth rate for the last five-years:

	1999	2000	2001	2002	2003
Local Data	.6%	.6%	-3.0%	.2%	3.9%
National	1.5%	2.4%	.03%	-.31%	.86%
Basis:	MSA	MSA	MSA	MSA	MSA

## Housing

This attribute provides an indication of availability of housing, both sales and rental, in the local community. Note: According to the 2000 Census, Vacant Sale and Vacant Rental Units do not equal total Vacant Housing Units. Vacant housing units may also include units that are vacant but not on the market for sale or rent. For each entry, the basis of the data (either MSA or number of counties in the MHA or the county of the installation) is indicated.

Total Vacant Housing Units	11,303	Basis: MSA
Vacant Sale Units	1,662	
Vacant Rental Units	5,200	

## Medical Providers

This attribute provides an indicator of availability of medical care for military and DoD civilians in the local community. The table reflects the raw number of physicians/beds and ratio of physicians/beds to population. The basis of the data (either MSA or number of counties in the MHA or the county of the installation) is indicated.

	# Physicians	# Beds	Population	Basis: MSA
Local Community	796	1,162	274,624	
Ratio	1:345	1:236		
National Ratio (2003)	1:421.2	1:373.7		

## Safety/Crime

The local community's Uniform Crime Reports (UCR) Index for 2002 per 100,000 people and the national UCR based on information from the Federal Bureau of Investigation (FBI) for 2002 is provided. The basis of the data (either MSA or state) is indicated.

Local UCR	5,042.0	Basis: MSA
National UCR	4,118.8	

## Transportation

Distance to an airport shows convenience and availability of airline transportation. Public transportation shows potential for members and DoD civilians to use it to commute to/from work under normal circumstances and for leisure.



*This document may contain information protected from disclosure by public law, regulations or orders.*

Distance from FORT BENNING to nearest commercial airport: 10.8 miles  
Is FORT BENNING served by regularly scheduled public transportation? Yes

## **Utilities**

This attribute identifies a local community's water and sewer systems' ability to receive 1,000 additional people.

Does the local community's water system have the ability to meet an expanded need of an additional 1,000 people moving in the local community? Yes

Does the local community's sewer system have the ability to meet an expanded need of an additional 1,000 people moving in the local community? Yes

**Summary of Scenario Environmental Impacts for RCPAT Proposals  
- RC Sites -**

Proposal # 189 / USA-0143 Title: AFRC Fort Benning, GA

Analyst \_\_\_\_\_ Last Update: 4/15/05

Env Resource Area	# <i>Gaining</i> Installation Assessment Inst Name: <b>Ft Benning</b>	Analyst Comments (& data source(s) that drive assessment)
Air Quality	<p>Impact Expected. Ft. Benning is projected to be in Non-Attainment for PM2.5.</p> <p>Added operations will require Air Conformity Analysis.</p>	<p>#213, #219 - All NAAQS in Attainment currently, but projected to be Non-Attainment for PM2.5 (state of GA is contesting).</p> <p>#211 Emissions inventory shows permit limits exceeded for VOC, NOx, CO, PM, &amp; Major source threshold limits exceeded for NOx and PM2.5. However, the State of Georgia exempts emissions from prescribed burning activities. 99.4% of CO, 68.2% of Nox, 94% of PM, 92% of all PM 10 and 60.3% of VOC are attributed to prescribed burning activities. Therefore the emissions reported to the State are under permitted thresholds.</p> <p>#220 Has Major Source permit</p>
Cultural/Archeological/Tribal Resources	<p>1226 archeological sites identified, with restrictions on vehicle traffic and digging. 1617 historic properties. 12 Native American tribes have asserted an interest in archeological sites.</p> <p>No impact expected. Sufficient buildable acres exist to avoid archaeological/cultural resources.</p>	<p>#230-1226 arch sites listed, with restrictions on vehicle traffic and digging within designated sites</p> <p>#231-Native People Sites Identified</p> <p>#232 –Areas with high potential for archaeological resources identified</p> <p>#233 - 90% surveyed</p> <p>#234 – 12 tribes asserted interest in burial/sacred sites; in formal consultation</p> <p>#235 - 1617 historic properties listed</p> <p>#236-No Programmatic Agreement</p> <p>ISR2 shows access to sites is impacting mission.</p>
Dr ed g- ing	No impact.	#226-228 –No restr
Land Use Constraints/Sensitive Resource Areas	No impact.	<p>#30 - Buildable Acres – 28 req'd (based on 2/3 large admin organization) &gt;2500 non-training acres available.</p> <p>#256 – 1 Sensitive Resource Area identified but causes no restrictions</p> <p>CERL Study – moderate encroachment projected</p>
Mar ine Mammals/Marine Resources	No impact.	#248, #249, #250, #252, #253 - No restrictions

**Summary of Scenario Environmental Impacts for RCPAT Proposals  
- RC Sites -**

Noise	No impact. No noise generated by this recommendation.	#201, #239 - 9003 acres of Noise Zone 2, and 1785 acres of Zone 3 extend outside installation boundary. IENMP imposes ban on firing .50 Cal or larger from 1100-0600 hours
Threatened & Endangered Species/Critical Habitat	<p>5 TES listed (Bald Eagle, Wood Stork, American Alligator, Relict Trillium, and Red-Cockaded Woodpecker), with restrictions to 0.1% of the installation. Bald Eagle restrictions affect airspace for flight operations 1,000 vertical feet and 1,000 horizontal feet from nest site. Ground training is restricted to no training within 1,500 feet of nest sites. These restrictions are implemented during the nesting period (Dec-May). Relict Trillium area restricted to foot traffic only and no digging allowed. Red-Cockaded Woodpecker restricts vehicle use, maneuver and bivouac, weapons firing, pyrotechnics use, and digging within 200 feet of individual red-cockaded woodpecker cavity trees.</p> <p>No impact expected. Sufficient buildable acres exist to avoid TES.</p>	<p>#201, 259, 261 - 5 TES listed (Bald Eagle, Wood Stork, American Alligator, Relict Trillium, and Red-Cockaded Woodpecker), with restrictions to 0.1% of the installation. Bald Eagle restrictions affect airspace for flight operations 1,000 vertical feet and 1,000 horizontal feet from nest site. Ground training is restricted to no training within 1,500 feet of nest sites. These restrictions are implemented during the nesting period (Dec-May). Relict Trillium area restricted to foot traffic only and no digging allowed. Red-Cockaded Woodpecker restricts vehicle use, maneuver and bivouac, weapons firing, pyrotechnics use, and digging within 200 feet of individual red-cockaded woodpecker cavity trees.</p> <p>#260 - No critical habitat #262 - BO restrictions impede expansion #263 - 1 candidate species (Georgia Rockcress) affects 0.005% of range.</p>
Waste Management	No Impact.	#269 No RCRA Subpart X Permit - but none needed.
Water Resources	<p>No impact.</p> <p>Water quality impaired by pollutant loadings. Current operations may contribute to impaired water quality. Significant mitigation measures may be required to reduce impacts to water quality and achieve US EPA water quality standards.</p>	<p>#276- Not over a recharge zone #278, 293 - No previous restrictions #279 - installation discharges to 7 impaired waterways, but is not currently a polluter of impaired waterways, #291 – Has 5 potable water production plants on-installation #297 – Installation uses 2 On Military Installation plants for sewage treatment IREM shows water infr can support 17,009 more people ISR2 indicates WQM and WWQM issues adversely impact the mission.</p>
Wetlands	No impacts.	<p>#251 - Wetlands survey completed 1995 #257 – Wetlands restrict 9% of range</p>

**Summary of Scenario Environmental Impacts for RCPAT Proposals  
- RC Sites -**

**IMPACTS OF COSTS / COST SUMMARY**

	<i>Gaining Installation Assessment Fort Benning</i>	<i>Losing Installation Assessment Columbus USARC</i>
<u><b>Environmental Resource Areas</b></u> Air Quality; Cultural/Archeological/Tribal Resources; Dredging; Land Use Constraints/Sensitive Resource Areas; Marine Mammals/Marine Resources/Marine Sanctuaries; Noise; Threatened & Endangered Species/Critical Habitat; Waste Management; Water Resources; Wetlands	See above assessment.	No Impacts  Review of existing records at USAR Columbus reveals no environmental issues.
<u><b>Compliance</b></u> (e.g., pollution prevention, air permits, etc.)	1 NEPA Record of Environmental Consideration (REC) needed for Fort Benning.  -Air Conformity Analysis - \$25k – \$75K -New Source Review Analysis and permitting - \$100K-\$500K -Install Best Mgt Practices to protect impaired waterways and reduce non-point source runoff from training areas and ranges - \$100K - \$3M.	1 Basic EBS for Columbus USARC
<u><b>Restoration</b></u> (AEDBR data, CERCLA work)		
<u><b>Waste Management</b></u> (RCRA – Haz. Waste, OB/OD areas, radiological, etc.)		
<b>COBRA Costs:</b>	1 NEPA REC = \$5,000 Air Conformity Analysis = \$50,000 New Source Review Analysis and permitting - \$100,000  <b>Revised total = \$0 based on aggregation of all Ft Benning scenarios.</b>	1 Basic EBS = \$8,000  Total = \$8,000

***Summary of Scenario Environmental Impacts for RCPAT Proposals***  
***- RC Sites -***

- On Fort Benning (Bldgs. #15 and #4960) are proposed for closure, but since Ft Benning is also the receiving site, no separate costs are included to close these buildings.

*Summary of Scenario Environmental Impacts for RCPAT Proposals*  
*- RC Sites -*