

Vowels and almost vowels in Lamkang: Long, short, super short, and ??

Melissa Robinson, University of North Texas; Nancy Caplow, Oklahoma State University, Stillwater; Shobhana Chelliah, University of North Texas

Lamkang: Kuki-Chin-Naga

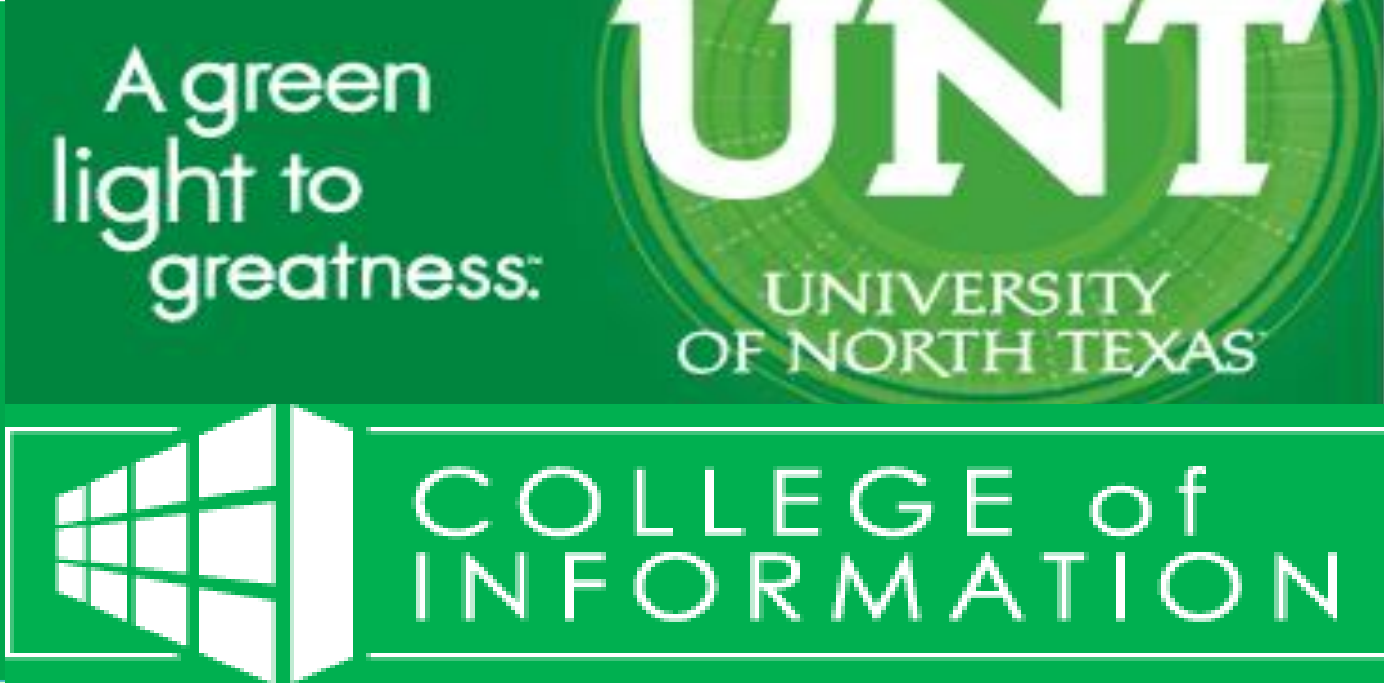


Four characteristic V lengths

Four characteristic vowel lengths	
Lexemes	
Long vowels	~210 ms
Short vowels	~122 ms
Prefixes	
Pfx. type 1 [CəC.C ^o]	Cə is 21 ms > C ^o (N= 18)
Pfx. type 2 [Cə.C ^o (C)]	Cə is 16 ms > C ^o (N= 17)
Pfx. type 2 [C̣.C ^o (C)]	C̣ is 37 ms > C ^o (N= 23)

Verb Morphology

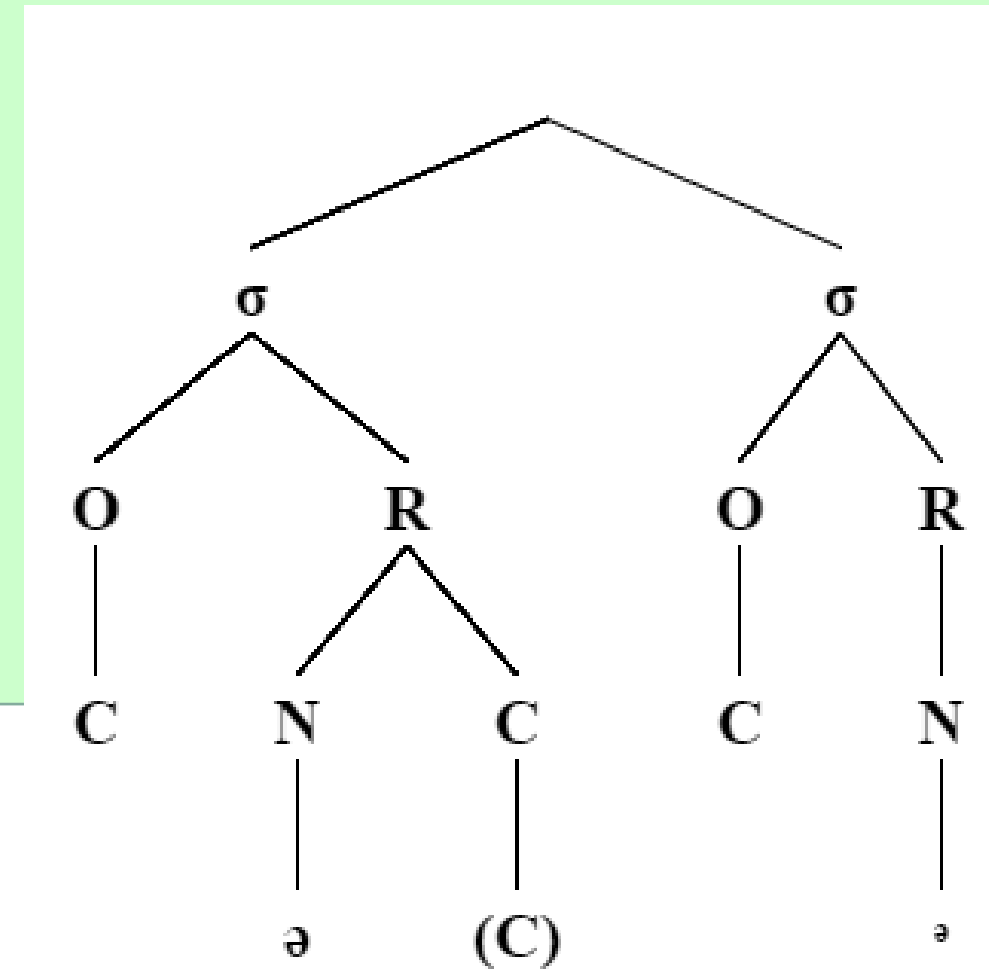
Pre-Root Verb morphology					
Participant Markers	Inverse	Centripetal	Directionals	Valency	ROOT
k- 'subj:3.ipfv' m- 'obj:1'	t- inverse	(a)- 'toward center'		p- 'causative' k- 'nominalizer'	
Post-Root Verb Morphology					
ROOT	Reciprocal/Comitative	Adverbials	INFL: P/N	INFL: P/Asp.	ENC
	-cha 'comitative'	-dok 'completely'	-in 'pl' -lam 'pl'	-da 'subj:3.pfv'	=u 'imp'



Syllabification Patterns

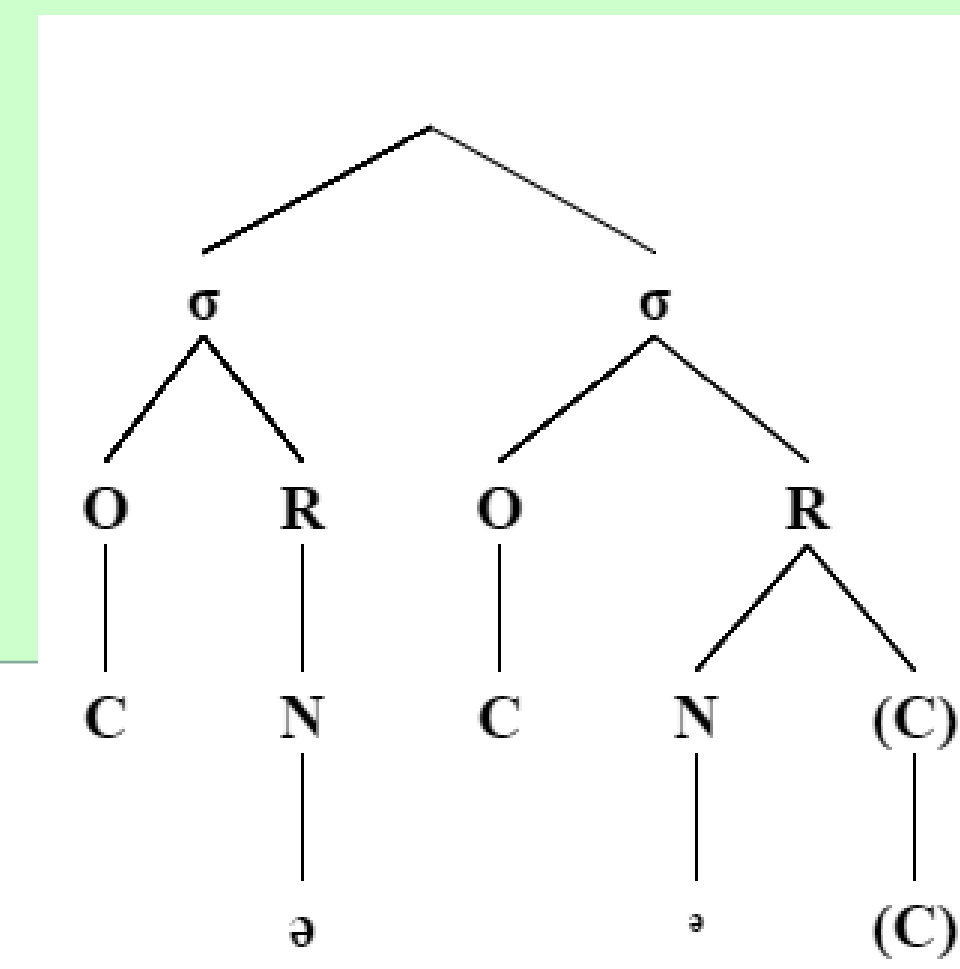
Syllabification Type 1

[CəC . C^o]



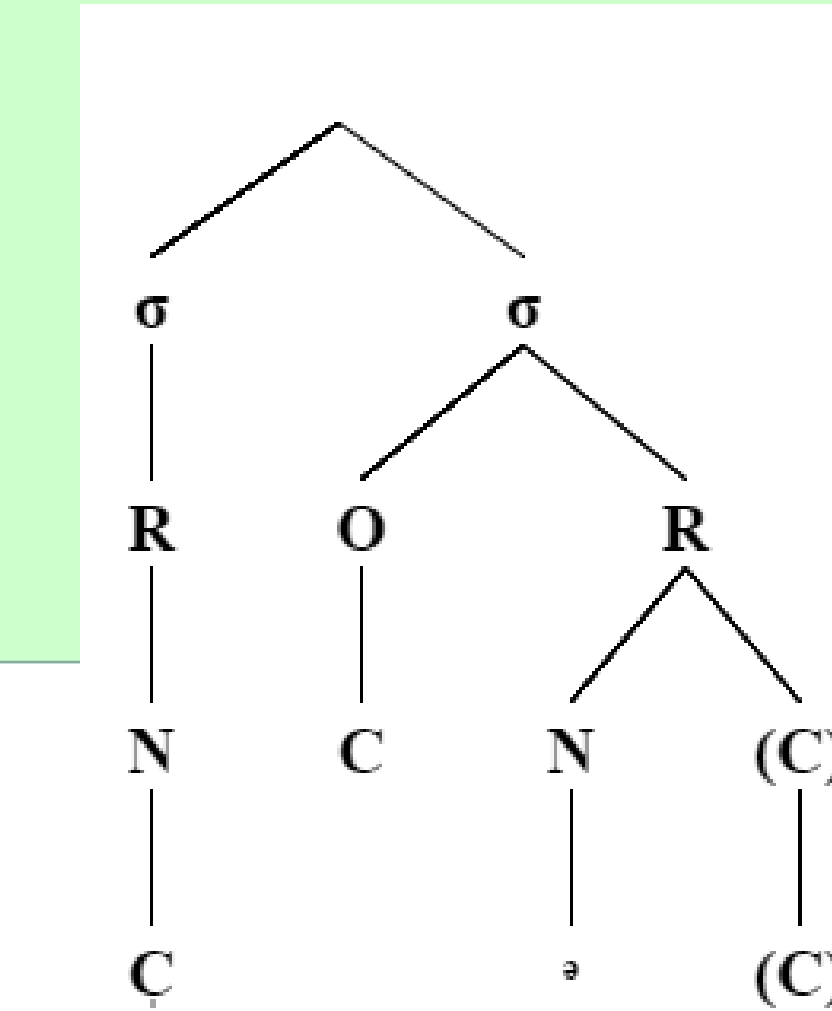
Syllabification Type 2

[Cə . C^o(C)]

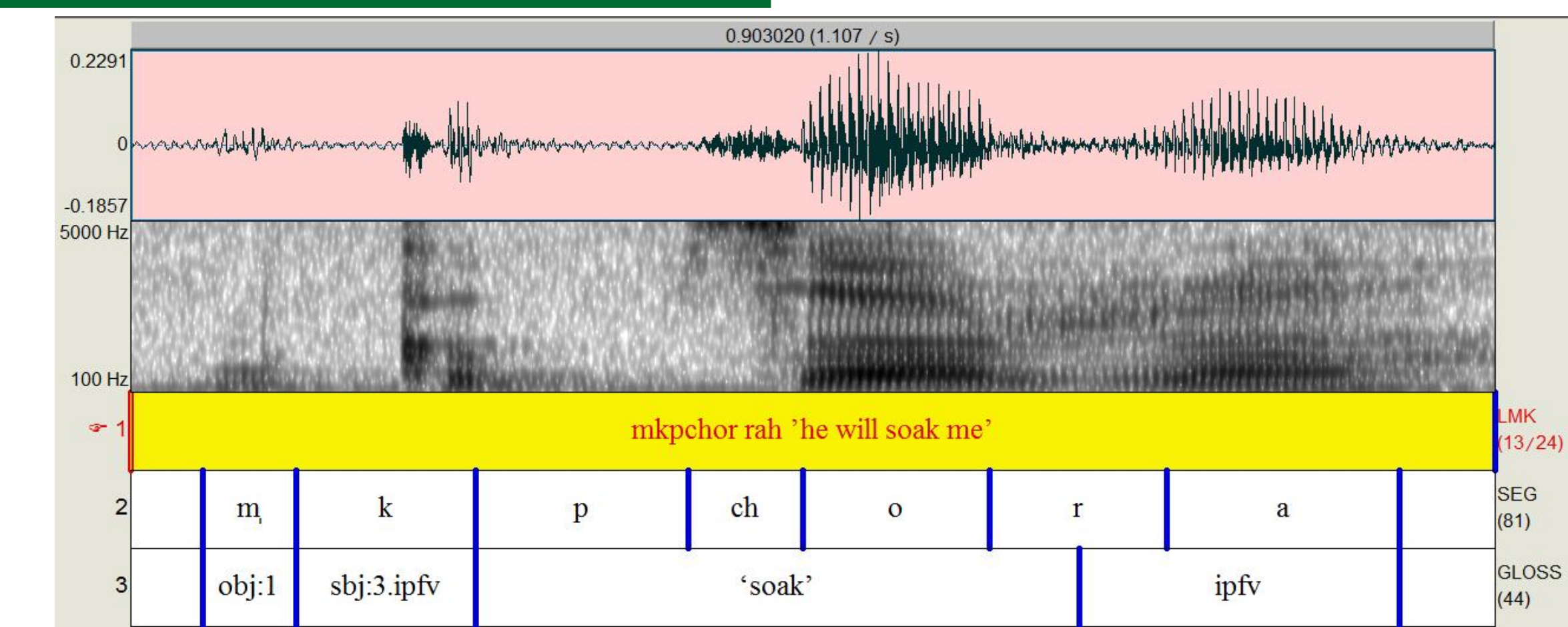
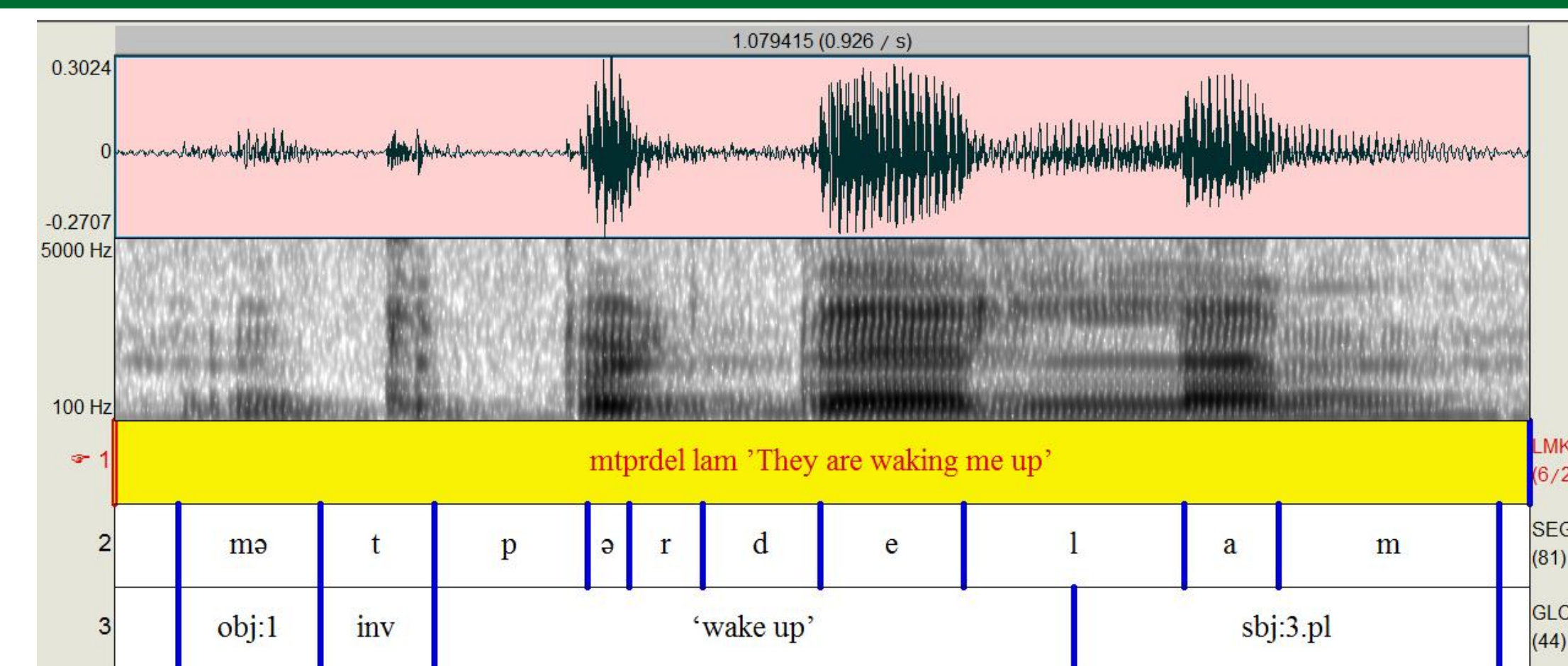
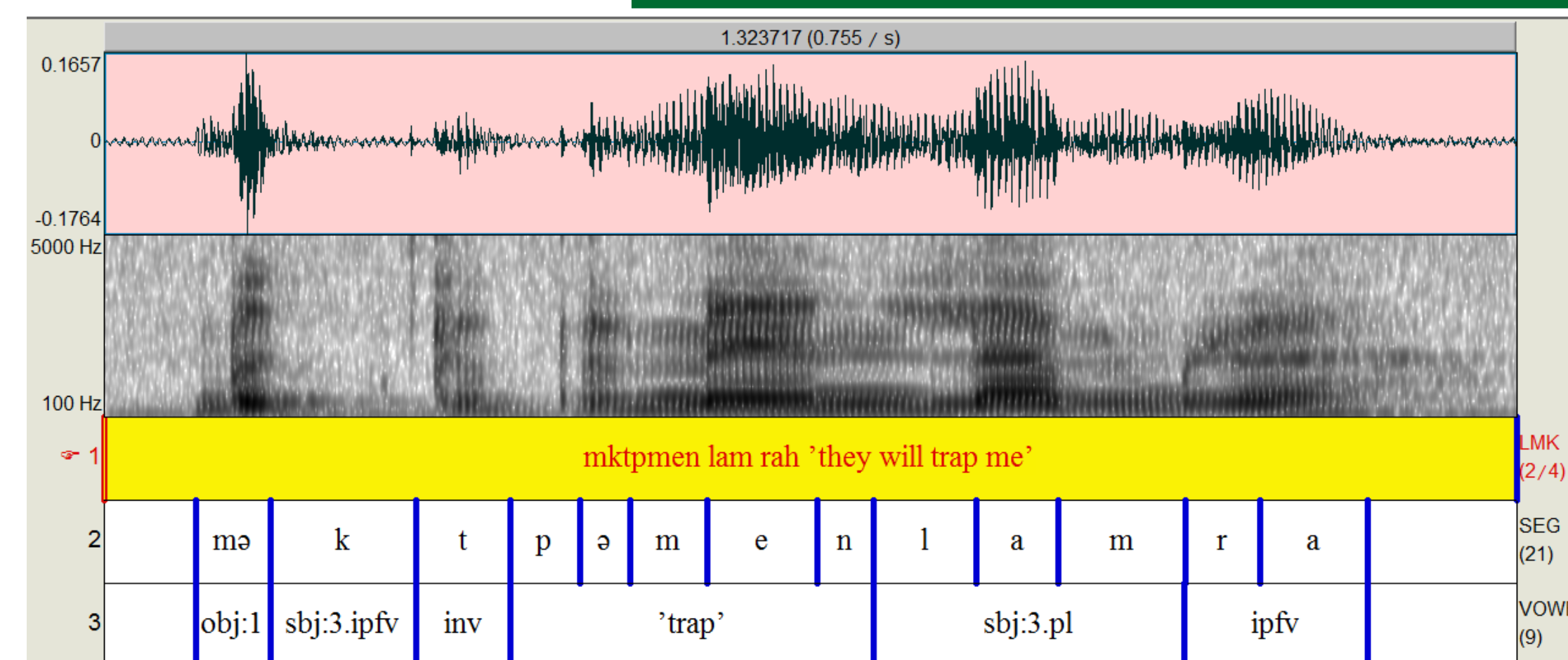


Syllabification Type 3

[C̣ . C^o(C)]



FULL WORD EXAMPLES



PREFIX ZOOM IN

