

Economic Impact Report

This report depicts the economic impact of the following Scenarios:

USAF0055v2: AF NAS New Orleans (136c3)

The data in this report is rolled up by Region of Influence

As of: Mon May 02 16:51:53 EDT 2005

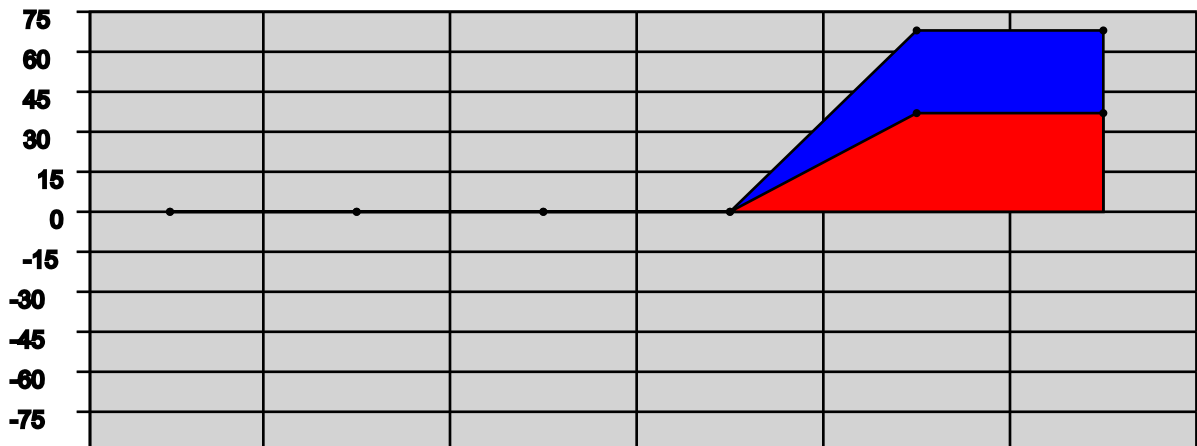
ECONOMIC IMPACT DATA

Scenario: All Selected (see title page)
Economic Region of Influence(ROI): Denver-Aurora, CO Metropolitan Statistical Area
Base: All Bases
Action: All Actions

Overall Economic Impact of Proposed BRAC-05 Action:

ROI Population (2002): 2,276,533
 ROI Employment (2002): 1,545,580
 Authorized Manpower (2005): 2,489
 Authorized Manpower(2005) / ROI Employment(2002): 0.16%
 Total Estimated Job Change: 68
 Total Estimated Job Change / ROI Employment(2002): 0%

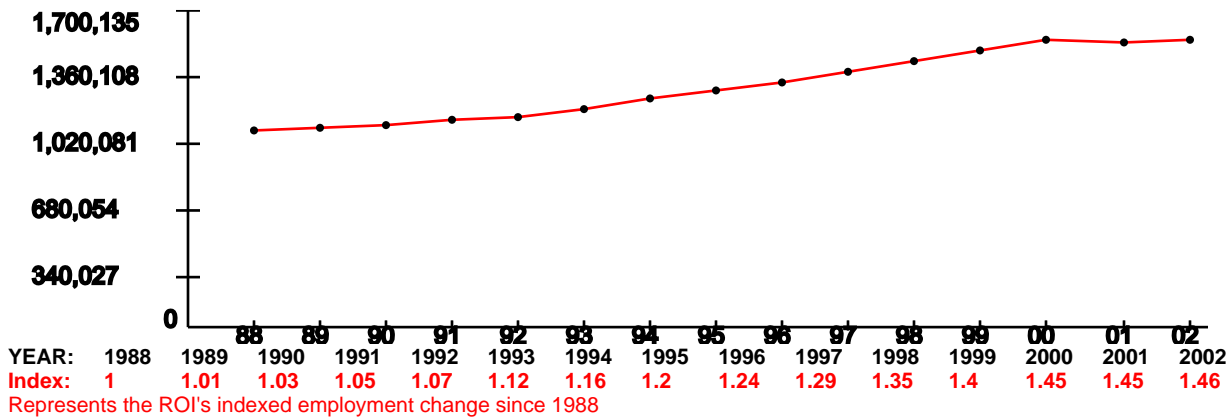
Cumulative Job Change (Gain/Loss) Over Time:



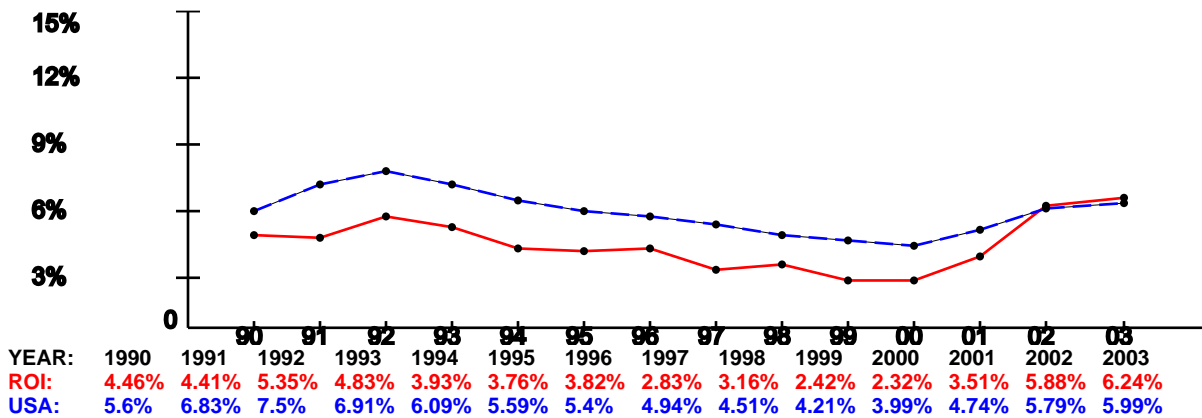
YEAR:	2006	2007	2008	2009	2010	2011
Direct Military:	0	0	0	0	4	0
Direct Civilian:	0	0	0	0	33	0
Direct Student:	0	0	0	0	0	0
Direct Contractor:	0	0	0	0	0	0
Cumulative Direct:	0	0	0	0	37	37
Cum Indir/Induc:	0	0	0	0	31	31
Cumulative Total:	0	0	0	0	68	68

Denver-Aurora, CO Metropolitan Statistical Area Trend Data

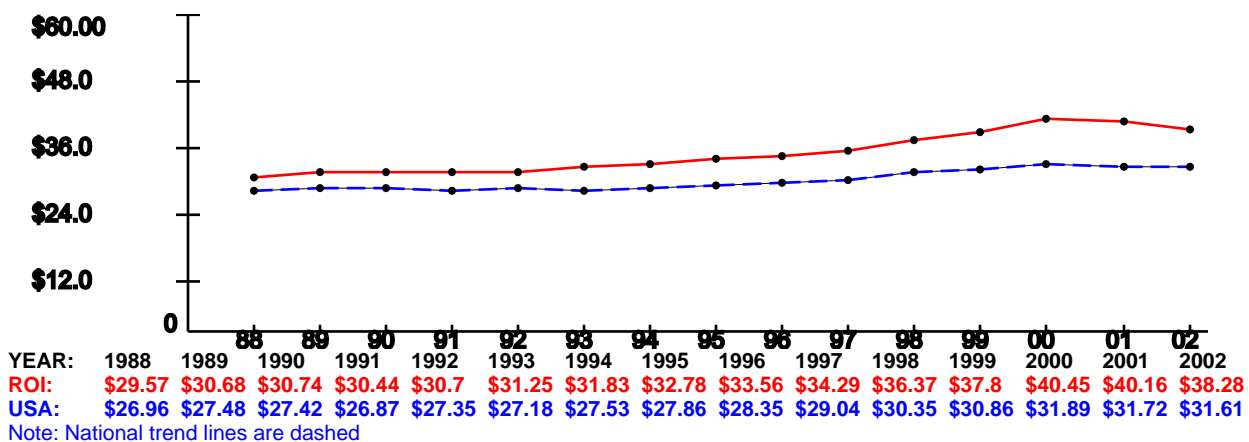
Employment Trend (1988-2002)



Unemployment Percentage Trend (1990-2003)



Per Capita Income x \$1,000 (1988-2002)



As of: Mon May 02 16:51:53 EDT 2005

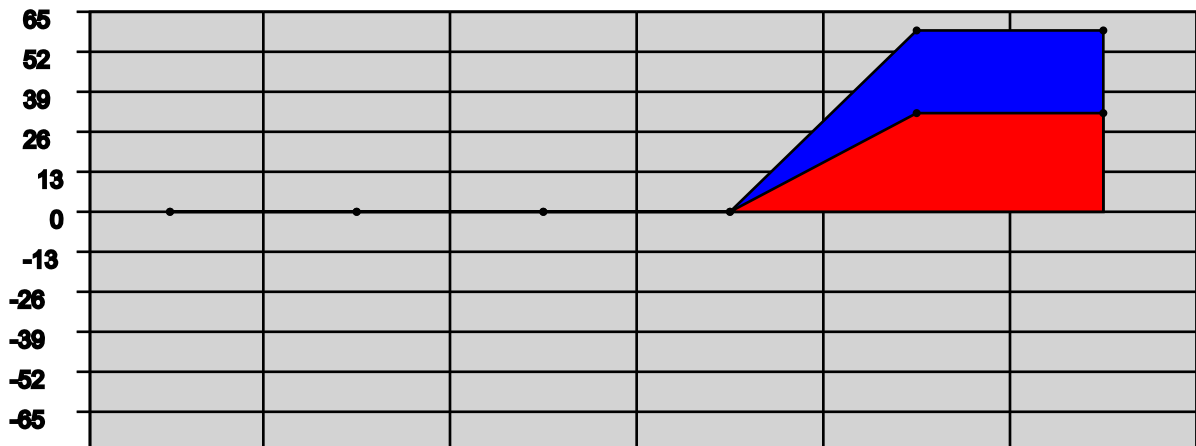
ECONOMIC IMPACT DATA

Scenario: All Selected (see title page)
Economic Region of Influence(ROI): Las Vegas-Paradise, NV Metropolitan Statistical Area
Base: All Bases
Action: All Actions

Overall Economic Impact of Proposed BRAC-05 Action:

ROI Population (2002):	1,516,274
ROI Employment (2002):	890,855
Authorized Manpower (2005):	7,894
Authorized Manpower(2005) / ROI Employment(2002):	0.89%
Total Estimated Job Change:	59
Total Estimated Job Change / ROI Employment(2002):	0.01%

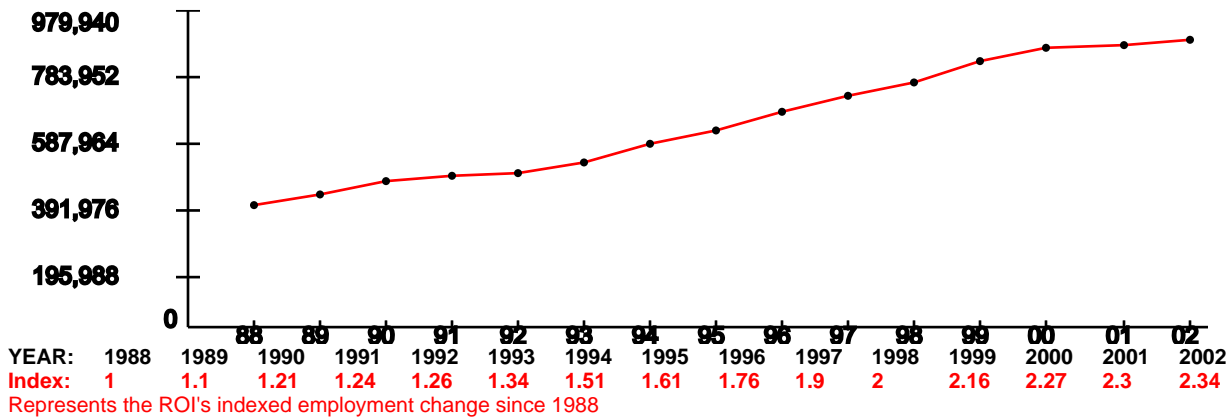
Cumulative Job Change (Gain/Loss) Over Time:



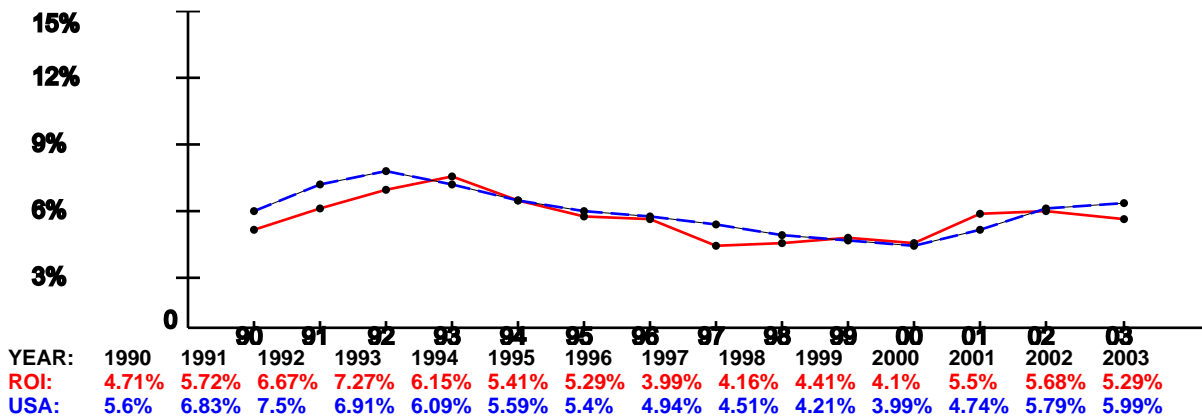
YEAR:	2006	2007	2008	2009	2010	2011
Direct Military:	0	0	0	0	1	0
Direct Civilian:	0	0	0	0	31	0
Direct Student:	0	0	0	0	0	0
Direct Contractor:	0	0	0	0	0	0
Cumulative Direct:	0	0	0	0	32	32
Cum Indir/Induc:	0	0	0	0	27	27
Cumulative Total:	0	0	0	0	59	59

Las Vegas-Paradise, NV Metropolitan Statistical Area Trend Data

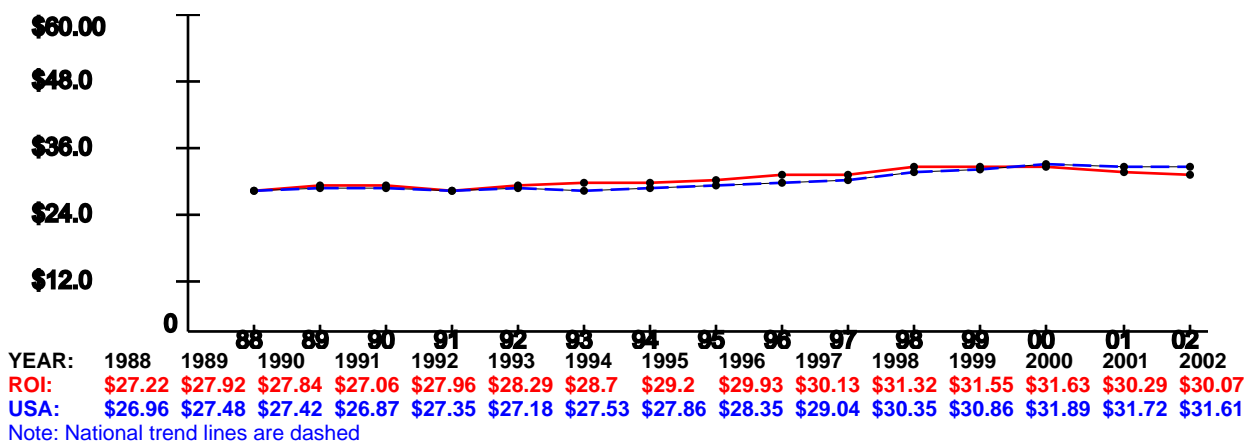
Employment Trend (1988-2002)



Unemployment Percentage Trend (1990-2003)



Per Capita Income x \$1,000 (1988-2002)



As of: Mon May 02 16:51:53 EDT 2005

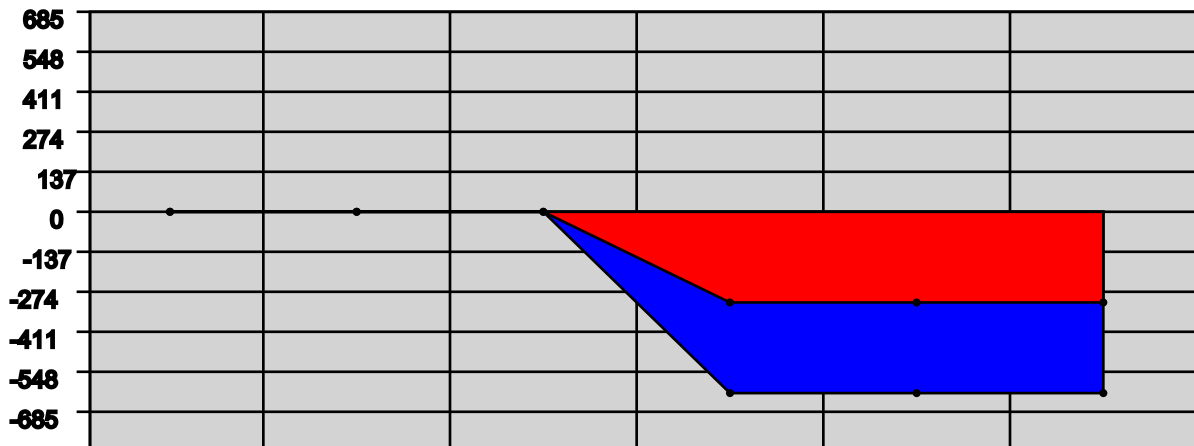
ECONOMIC IMPACT DATA

Scenario: All Selected (see title page)
Economic Region of Influence(ROI): New Orleans-Metairie-Kenner, LA Metropolitan Statistical Area
Base: All Bases
Action: All Actions

Overall Economic Impact of Proposed BRAC-05 Action:

ROI Population (2002): 1,313,509
 ROI Employment (2002): 763,801
 Authorized Manpower (2005): 286
 Authorized Manpower(2005) / ROI Employment(2002): 0.04%
 Total Estimated Job Change: -625
 Total Estimated Job Change / ROI Employment(2002): -0.08%

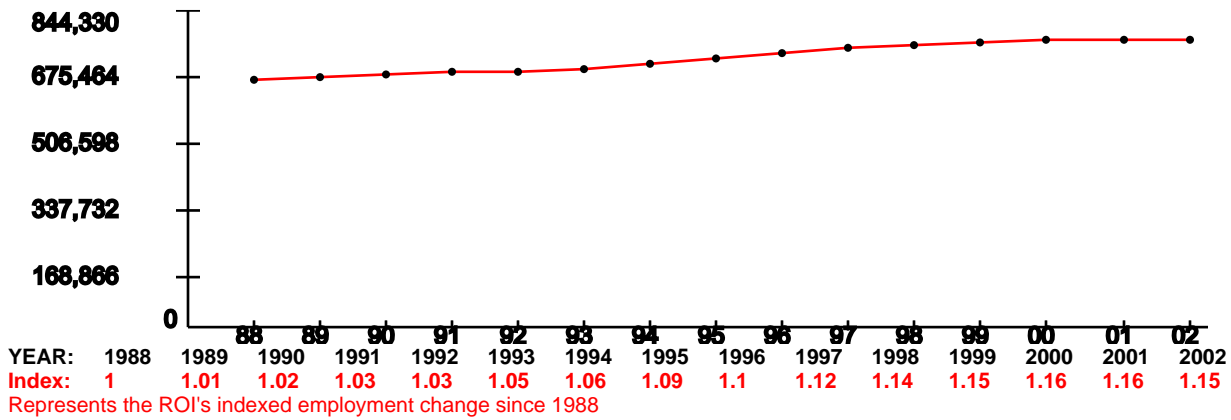
Cumulative Job Change (Gain/Loss) Over Time:



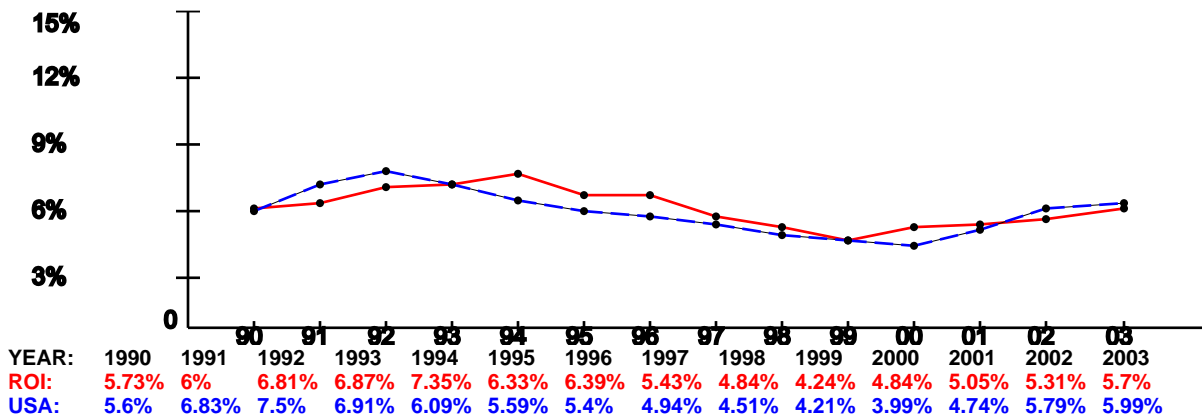
YEAR:	2006	2007	2008	2009	2010	2011
Direct Military:	0	0	0	-4	0	0
Direct Civllian:	0	0	0	-308	0	0
Direct Student:	0	0	0	0	0	0
Direct Contractor:	0	0	0	0	0	0
Cumulative Direct:	0	0	0	-312	-312	-312
Cum Indir/Induc:	0	0	0	-313	-625	-625
Cumulative Total:	0	0	0	-625	-625	-625

New Orleans-Metairie-Kenner, LA Metropolitan Statistical Area Trend Data

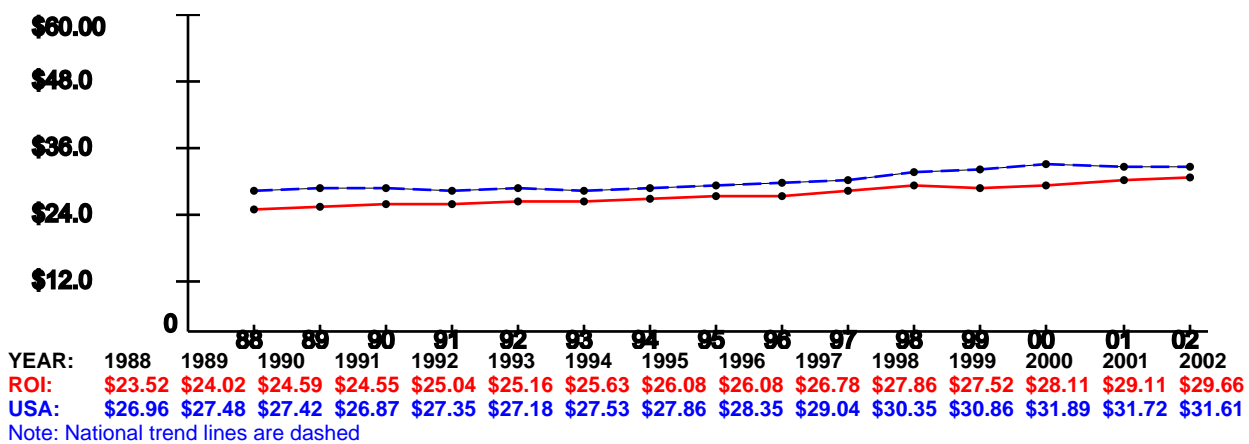
Employment Trend (1988-2002)



Unemployment Percentage Trend (1990-2003)



Per Capita Income x \$1,000 (1988-2002)



As of: Mon May 02 16:51:53 EDT 2005

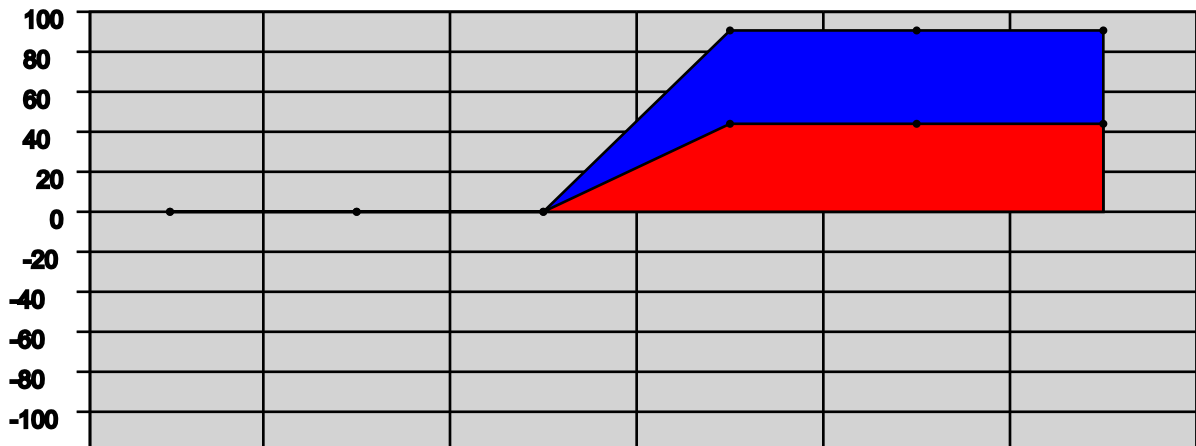
ECONOMIC IMPACT DATA

Scenario: All Selected (see title page)
Economic Region of Influence(ROI): Shreveport-Bossier City, LA Metropolitan Statistical Area
Base: All Bases
Action: All Actions

Overall Economic Impact of Proposed BRAC-05 Action:

ROI Population (2002):	376,748
ROI Employment (2002):	211,384
Authorized Manpower (2005):	6,790
Authorized Manpower(2005) / ROI Employment(2002):	3.21%
Total Estimated Job Change:	91
Total Estimated Job Change / ROI Employment(2002):	0.04%

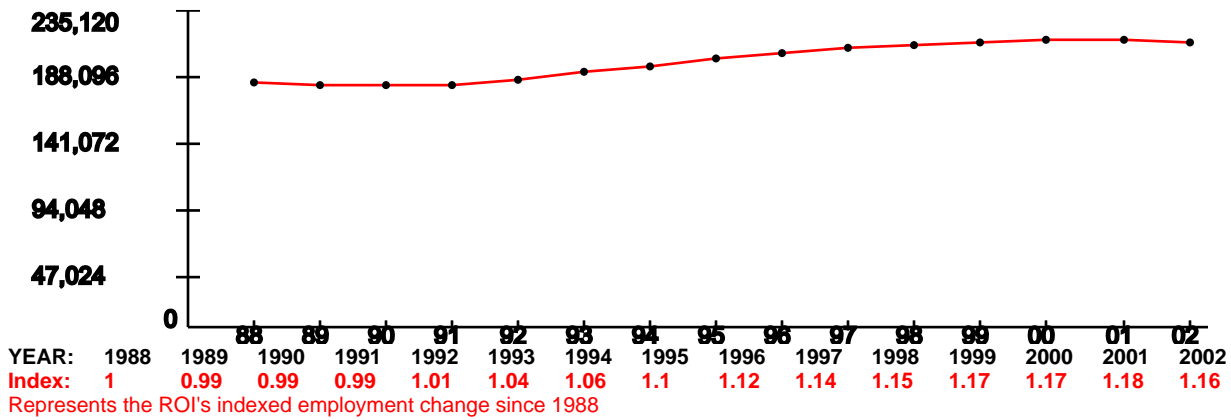
Cumulative Job Change (Gain/Loss) Over Time:



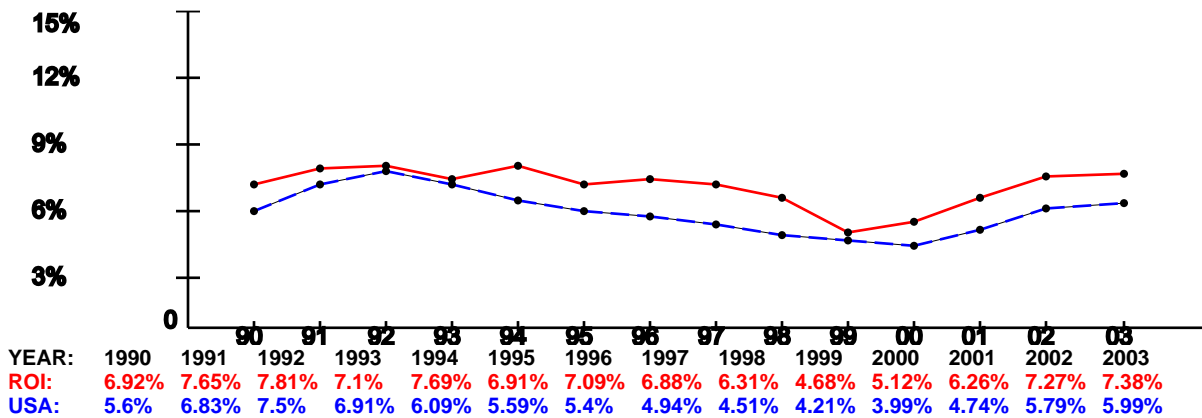
YEAR:	2006	2007	2008	2009	2010	2011
Direct Military:	0	0	0	4	0	0
Direct Civllian:	0	0	0	40	0	0
Direct Student:	0	0	0	0	0	0
Direct Contractor:	0	0	0	0	0	0
Cumulative Direct:	0	0	0	44	44	44
Cum Indir/Induc:	0	0	0	47	47	47
Cumulative Total:	0	0	0	91	91	91

Shreveport-Bossier City, LA Metropolitan Statistical Area Trend Data

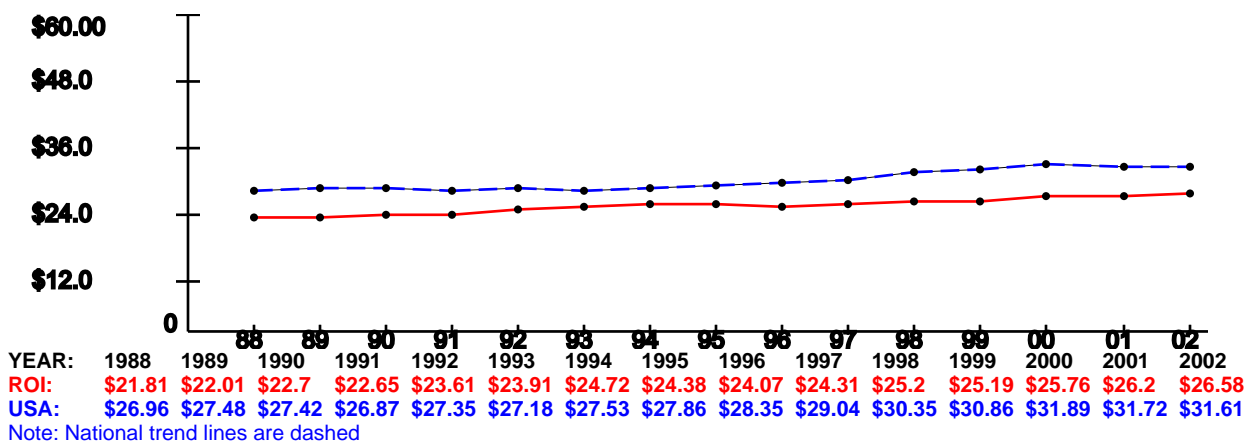
Employment Trend (1988-2002)



Unemployment Percentage Trend (1990-2003)



Per Capita Income x \$1,000 (1988-2002)



As of: Mon May 02 16:51:53 EDT 2005

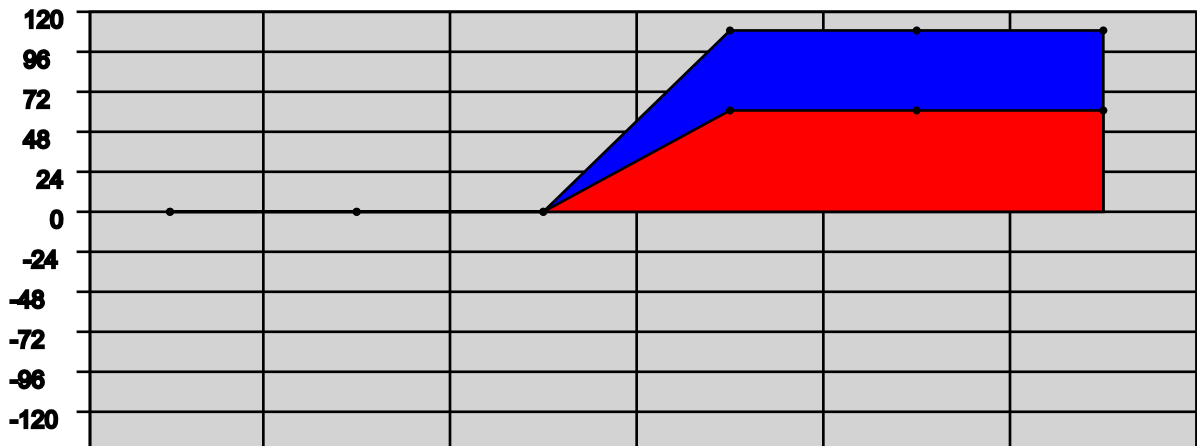
ECONOMIC IMPACT DATA

Scenario: All Selected (see title page)
Economic Region of Influence(ROI): Warrensburg, MO Micropolitan Statistical Area
Base: All Bases
Action: All Actions

Overall Economic Impact of Proposed BRAC-05 Action:

ROI Population (2002): 49,787
 ROI Employment (2002): 28,670
 Authorized Manpower (2005): 4,227
 Authorized Manpower(2005) / ROI Employment(2002): 14.74%
 Total Estimated Job Change: 110
 Total Estimated Job Change / ROI Employment(2002): 0.38%

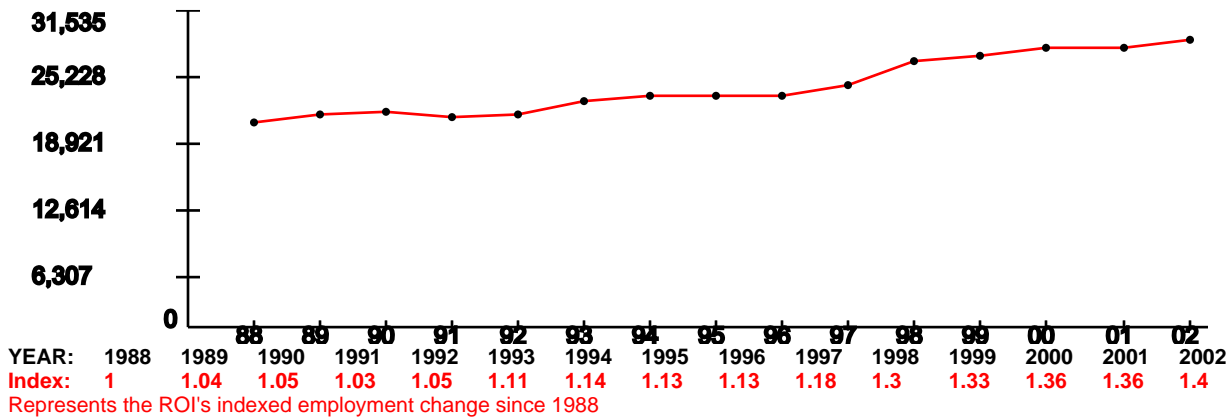
Cumulative Job Change (Gain/Loss) Over Time:



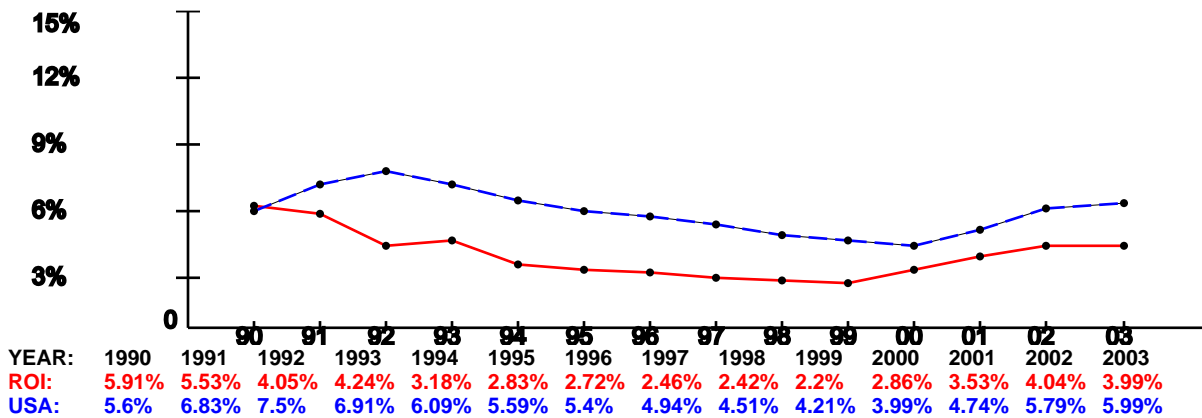
YEAR:	2006	2007	2008	2009	2010	2011
Direct Military:	0	0	0	3	0	0
Direct Civilian:	0	0	0	58	0	0
Direct Student:	0	0	0	0	0	0
Direct Contractor:	0	0	0	0	0	0
Cumulative Direct:	0	0	0	61	61	61
Cum Indir/Induc:	0	0	0	49	49	49
Cumulative Total:	0	0	0	110	110	110

Warrensburg, MO Micropolitan Statistical Area Trend Data

Employment Trend (1988-2002)



Unemployment Percentage Trend (1990-2003)



Per Capita Income x \$1,000 (1988-2002)

