

Y3. AT 7:22 / ITEM 420

INDEXED
RES. OFF.

RED ROCK VALLEY NE, PRELIMINARY GEOLOGIC MAP
OF PART OF THE CARRIZO MOUNTAINS AREA,
NORTHEASTERN ARIZONA AND NORTHWESTERN NEW MEXICO

~~RECEIVED~~
~~JUL 7 1952~~
~~RESEARCH DEPT.~~
~~THE DOW CHEMICAL CO.~~
~~WESTERN DIV.~~

Trace Elements Memorandum Report 420

UNITED STATES DEPARTMENT OF THE INTERIOR
GEOLOGICAL SURVEY

WITHDRAWN



FEB 11 1991

metadc1393421

COLORADO SCHOOL OF MINES



UNITED STATES
DEPARTMENT OF THE INTERIOR
GEOLOGICAL SURVEY
WASHINGTON 25, D. C.

AEC - 999/2

Dr. Phillip L. Merritt, Assistant Director
Division of Raw Materials
U. S. Atomic Energy Commission
P. O. Box 30, Ansonia Station
New York 23, New York

Dear Phil:

Transmitted herewith for your information and distribution are six copies of Trace Elements Memorandum Report 420, "Red Rock Valley NE, preliminary geologic map of part of the Carrizo Mountains area, northeastern Arizona and northwestern New Mexico," by J. D. Strobell, Jr., June 1952. This map is the sixth of a series of 16 7½' quadrangles of the Carrizo Mountains area that will be transmitted soon.

This map is transmitted in advance of publication, in order to assist Commission and Survey personnel in their search for uranium deposits in the area. It shows geology, roads, drainage, meridians and parallels, triangulation stations, and air-photo centers and wing points. It is in very preliminary form, partly incomplete, and not edited for publication.

We plan to publish this map, in a somewhat modified form, in the Survey's Oil and Gas Map Series. We are asking Mr. Hosted, by a copy of this letter, whether the Commission has any objection to this plan.

Sincerely yours,

for W. H. Bradley
Chief Geologist

UNCLASSIFIED

Geology - Mineralogy

This document consists of 2 pages,
plus 1 figure.
Series A

UNITED STATES DEPARTMENT OF THE INTERIOR
GEOLOGICAL SURVEY

RED ROCK VALLEY NE, PRELIMINARY GEOLOGIC MAP OF PART
OF THE CARRIZO MOUNTAINS AREA, NORTHEASTERN ARIZONA
AND NORTHWESTERN NEW MEXICO*

By

J. D. Strobell, Jr.

June 1952

Trace Elements Memorandum Report 420

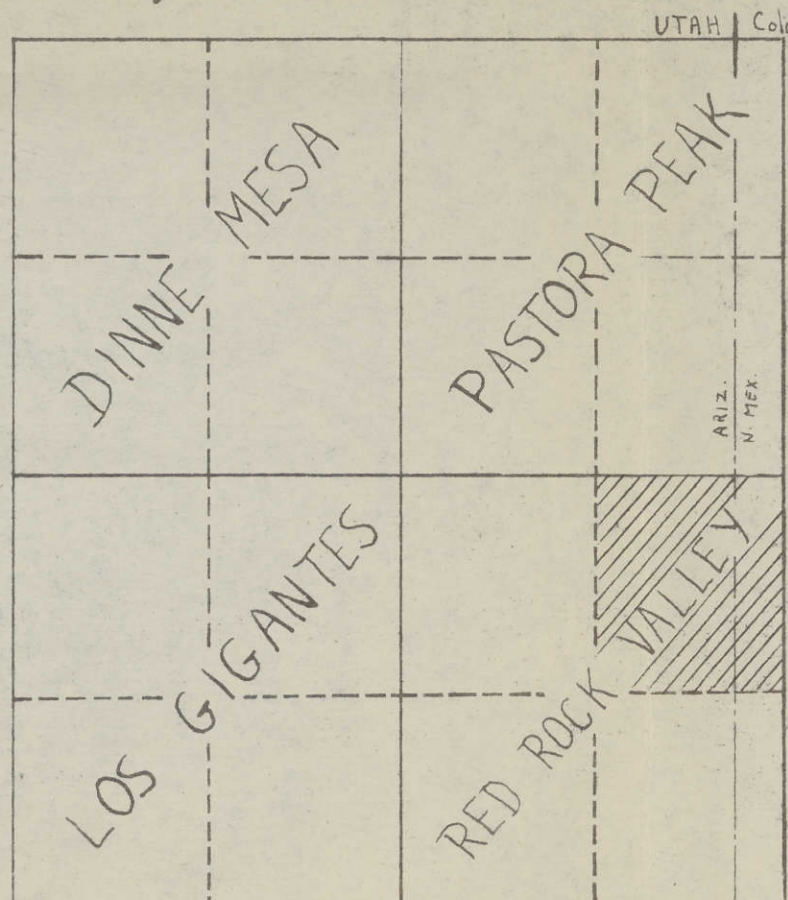
This preliminary report is distributed
without editorial and technical review
for conformity with official standards
and nomenclature. It is not for pub-
lic inspection or quotation.

*This report concerns work done on behalf of the Division
of Raw Materials of the U. S. Atomic Energy Commission

USGS - TEM Report 420

GEOLOGY - MINERALOGY

<u>Distribution (Series A)</u>	<u>No. of copies</u>
American Cyanamid Company, Watertown	1
Argonne National Laboratory	1
Atomic Energy Commission, Washington	2
Carbide and Carbon Chemicals Company, Y-12 Area.	1
Colorado Raw Materials Office (F. H. MacPherson).	2
Division of Raw Materials, Grand Junction	6
Division of Raw Materials, Grants	1
Division of Raw Materials, Denver.	1
Division of Raw Materials, Hot Springs	1
Division of Raw Materials, New York	6
Division of Raw Materials, Salt Lake City	1
Division of Raw Materials, Richfield	1
Division of Raw Materials, Butte	1
Division of Raw Materials, Washington	3
Dow Chemical Company, Pittsburg	1
Technical Information Service, Oak Ridge.	6
U. S. Geological Survey:	
Mineral Deposits Branch, Washington.	2
Geochemistry and Petrology Branch, Washington	1
Geophysics Branch, Washington	1
Alaskan Geology Branch, Washington.	1
Fuels Branch, Washington	3
V. E. McKelvey, Washington	1
L. R. Page, Denver	2
R. P. Fischer, Grand Junction	2
J. F. Smith, Jr., Denver	2
N. M. Denson, Denver	1
C. B. Read, Albuquerque	1
A. H. Koschmann, Denver	1
C. A. Anderson, Tucson	1
R. J. Roberts, Salt Lake City.	1
J. D. Strobell, Jr., Albuquerque	1
TEPCO, Washington	4
(Including master)	



Trace Elements Memorandum Report 420

Redrock Valley NE

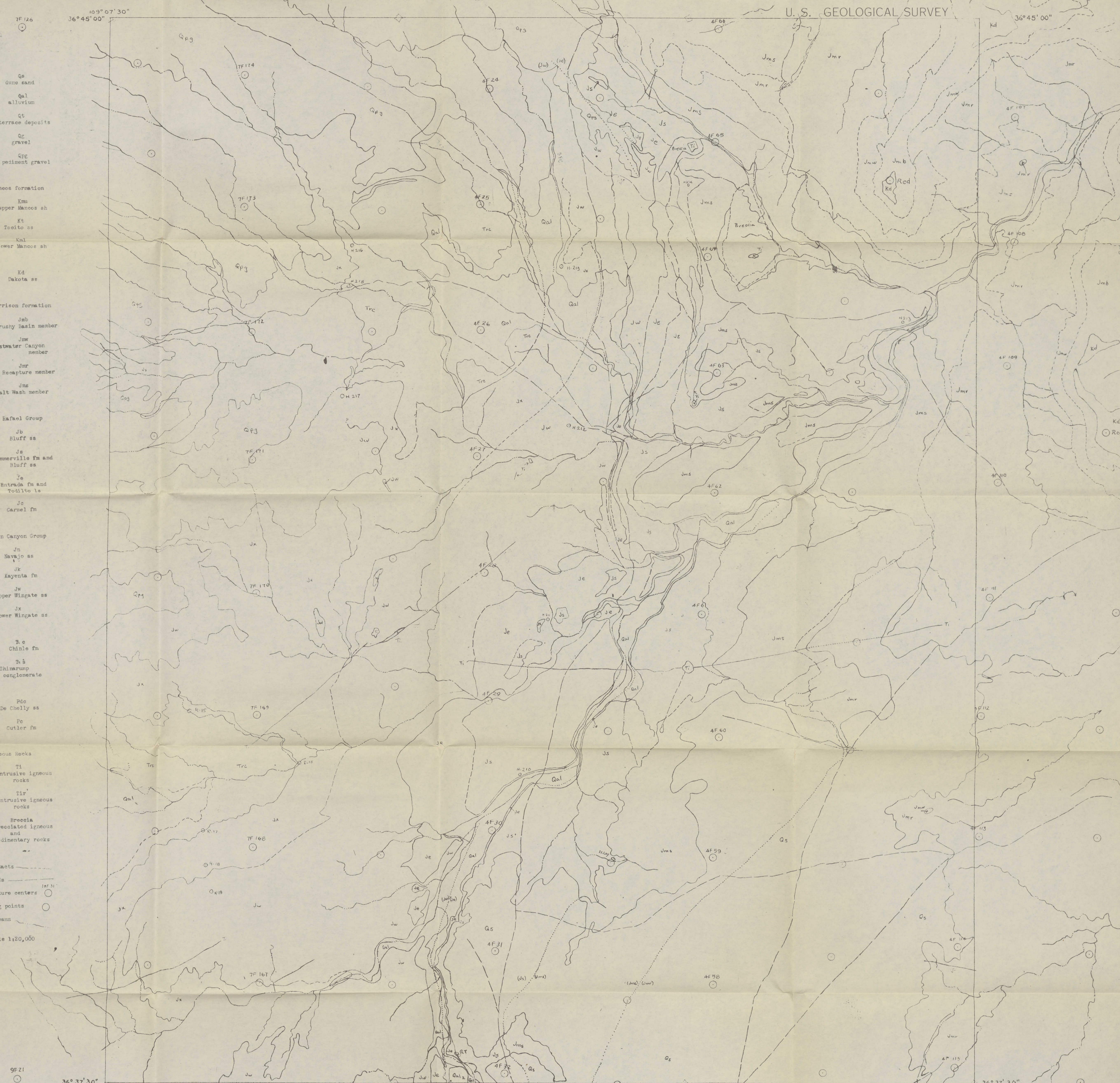
U.S. GEOLOGICAL SURVEY

- Qs dune sand
- Qal alluvium
- Qt terrace deposits
- Gr gravel
- Grp pediment gravel
- Manoos formation
 - Km upper Manoos sh
 - Kt Toole ss
 - Kal lower Manoos sh
- Kd Dakota ss
- Morrison formation
 - Jmb Brushy Basin member
 - Jmw Westwater Canyon member
 - Jmr Escalante member
 - Jms Salt Wash member
- San Rafael Group
 - Jb Bluff ss
 - Js Summerville fm and Bluff ss
 - Je Entrada fm and Toole ls
 - Jc Carmel fm
- Olen Canyon Group
 - Jn Navajo ss
 - Jk Kayenta fm
 - Jw upper Wingate ss
 - Jx lower Wingate ss
- Tc Chinle fm
- Sh Shinarump conglomerate
- Pds De Chelly ss
- Pc Outler fm

- Igneous rocks
 - Ti intrusive igneous rocks
 - Tir intrusive igneous rocks
 - Breccia brecciated igneous and sedimentary rocks

- Contacts
- Roads
- Picture centers
- Wing points
- Streams

Scale 1:20,000



PRELIMINARY DRAFT SUBJECT TO CORRECTION AND REVISION

OM 5975

1900

FEB 1 1991
U.S. GOVERNMENT DOCUMENTS
MANAGING
ARTHUR LAYNE LIBRARY
COLORADO SCHOOL OF MINES

