

UNITED STATES DEPARTMENT OF THE INTERIOR
GEOLOGICAL SURVEY



SEP 17 1991

U. S. GOVERNMENT DOCUMENTS
NONDEPOSITORY
ARTHUR LAKES LIBRARY
COLORADO SCHOOL OF MINES

Prepared For

U. S. Atomic Energy Commission

Neither the United States Government nor any agency thereof, nor any of their employees, makes any warranty, express or implied, or assumes any legal liability or responsibility for the accuracy, completeness, or usefulness of any information, apparatus, product, or process disclosed in this report, or represents that its use would not infringe privately owned rights. Reference therein to any specific commercial product, process, or service by trade name, trademark, manufacturer, or otherwise, does not necessarily constitute or imply its endorsement, recommendation, or favoring by the United States Government or any agency thereof. The views and opinions of authors expressed herein do not necessarily state or reflect those of the United States Government or any agency thereof.

metadc1393084

UNITED STATES DEPARTMENT OF THE INTERIOR

GEOLOGICAL SURVEY

PRELIMINARY RESERVE STATEMENT 7
RESERVE BLOCKS 5, 6, AND 7, GEORGETO CLAIM
GEORGETOWN GROUP, SAN MIGUEL COUNTY, COLORADO

By

R. D. Trace

September 1950

Trace Elements Memorandum Report 182

PRELIMINARY RESERVE STATEMENT 7

RESERVE BLOCKS 5, 6, and 7, GEORGETO CLAIM, SAN MIGUEL COUNTY, COLORADO

R. D. Trace
September 1950Location: NW $\frac{1}{4}$ sec. 30, T. 44 N., R. 18 W.

Ownership: Atomic Energy Commission

Access and

nearest mill: 2 miles unimproved road to Slick Rock, thence ~~4~~ miles via Colorado Highway 80 and U. S. Highway 160 to AEC Monticello mill.Reference: Trace Elements Investigations Report 116, June 1950
(Supplement revising this report is now in preparation)Reserves: Reserves are calculated as in detail reports on drilling projects, using a thickness cut-off of 1 foot, and grade cut-offs of 0.10% U₃O₈ and 1.00 percent V₂O₅. This reserve statement is preliminary, and is subject to revision.

Block 5: Indicated: none

Inferred: 375 short tons; average 0.48% U₃O₈, 1.74% V₂O₅

Minimum depth to reserve block: 70 feet

Block 6: Indicated: none

Inferred: 300 short tons; average 0.40% U₃O₈, 1.30% V₂O₅

Minimum depth to reserve block: 80 feet

Block 7: Indicated: 1,600 short tons; average 0.39% U₃O₈, 2.33% V₂O₅Inferred: 1,200 short tons; average 0.39% U₃O₈, 2.33% V₂O₅

Minimum depth to reserve block: 65 feet

Discussion: Carnotite deposits on the Georgeto claim have yielded about 500 short tons of ore estimated to contain 0.3 percent U₃O₈ and 2.75 percent V₂O₅. Known rolls on the Georgeto claim trend southeastward. Similar rolls may be present in the area of the reserve blocks. Blocks 6 and 7, about 200 feet east of the Georgeto mine, may be a continuous ore deposit. The mine and reserve blocks suggest an easterly trending belt of favorable ground. The eastern extent of this belt was not tested because of the depth of the ore and the difficulty of access. This favorable belt may continue completely across the Georgeto claim, and it may contain one or more deposits of about 1,000 tons of ore each.

ABBREVIATIONS FOR GEOLOGIC AND ASSAY LOGS

U. S. Geological Survey

Colorado Plateau Project

<u>ROCK NAMES</u>	<u>COLOR OF ROCK</u>
CG -- conglomerate	Colors are combined and hues or shades modified as shown by examples
SS -- sandstone	
MS -- mudstone	
ST -- siltstone	Wh -- white P -- pale
CS -- claystone	Br -- brown L -- light
CL -- clay	R -- red D -- dark
SH -- shale	Gy -- gray PBr -- pale brown
LS -- limestone	Gn -- green LBr -- light brown
	Bl -- blue YwGy -- yellow-gray
	Yw -- yellow DGnGy-- dark green-gray

GRAIN SIZE OF ROCK

<u>Terminology</u>	<u>Wentworth scale</u>	<u>Size in inches</u>
C -- coarse sand	1 - 1/2 mm	.04 -- .02
MC-- medium-coarse		
M -- medium	1/2 - 1/4 mm	.02 -- .01
MF-- medium-fine		
F -- fine	1/4 - 1/8 mm	.01 -- .005
VF-- very fine	1/8 - 1/16 mm	.005-- .0025

BEDDING IN ROCK (Bdg.)

- M -- massive, where bedding or laminations are absent
- S -- scarce, where bedding or laminations are few
- A -- abundant, where bedding or laminations are numerous

MUDSTONE IN SANDSTONE (MS in SS)

Amount:

- N -- none, sandstone appears "clean"
- S -- sparse, argillaceous material is small in amount
- A -- abundant, argillaceous material is large in amount (like "shaly SS")

Occurrence:

- P -- pebbles, rounded or angular fragments of pebble size, but also including by definition grains or granules and flakes which hence need not be recorded with pebbles
- G -- grains or granules (less than 4 mm or 0.15 in.)
- Fk-- flakes, paper thin, with two longer dimensions
- Sm-- seams; less than 0.1 ft. thick but thicker than films
- Fm-- films, usually along lamination or cross-bedding planes

For example: "A; P, Sm" means "Mudstone abundant; in the form of pebbles and seams", and "S; G, Fm" means "Mudstone sparse; in the form of grains and films"

CARBONACEOUS MATERIAL (Cbn.)

N -- none

A -- abundant

U.S. Geological Survey

GEOLOGIC AND ASSAY LOG

Colorado Plateau project
Graphic Log
1" = 50'

Drill hole No. GT-4
Total depth 85.3
Collar elev 5,760.5
Map coord N, E

Claim Georgeto
Area Slick Rock
Co., State San Miguel, Colorado
Sec. 30 T. 44 N. R. 18 W.

Date drilled 10/23-25/48
Date logged 10/25/48
Logged by C. Meissner

Interpretative summary of log Semi-favorable; ore zone 33'; some carbon, color poor, fair to good altered
midstone

Footage			Chemical assay (%)			Gamma-ray	Description						
From	To	Feet	U ₃ O ₈	V ₂ O ₅	CaCO ₃	% of eU ₃ O ₈	Rock	Color	Grain	Bdg	MS in SS	Cbn	Other remarks
0.0	38.5	38.5					SS	PRBr-PBr	F-M	S	S	S	Cbn at 31.5' and 38.5' MS mottled GyGn-RBr
	48.5	10.0					SS	RBr	F-MF/VP	A	A	S	
	72.0	23.5					SS	LRBr-PBr	VF-F	S	S	N	Some MS at 52' & 59'; MS:GyGn
	75.72	3.72					MS	GyGn				S	Cbn at 72'
	76.00	0.28	0.026	0.17	7.6		SS						
	85.0	9.0					SS	PBr/Wh	VF-F	A	A	N	MS:GyGn
	85.3	0.3					MS	RBr					

Drill hole No. GT-25
Total depth 83.9
Collar elev. 5,755.8
Map coord. N, E

Claim Georgeto
Area Slick Rock-Georgetown group
Co., State San Miguel, Colorado
Sec. 30 T. 44 N.R. 18 W.

Date drilled 11/10-13/48
Date logged 11/12/48
Logged by C. Weisser

Interpretative summary of log Unfavorable; Lacks Gn MS; SS red color; ore zone from 54.0' to 79.0'

Footage			Chemical assay (%)			Gamma-ray	Description						
From	To	Feet	U ₃ O ₈	V ₂ O ₅	CaCO ₃	% of eU ₃ O ₈	Rock	Color	Grain	Bdg	MS in SS	Cbn	Other remarks
0.0	19.0	19.0					SS	LRBr	F-M	VS	S	N	
	22.5	3.5					MS	RBr-GyGn		M		N	
	44.5	22.0					SS	LRBr-PBr	VF-MF	S	S	S	Color variable
	54.0	9.5					MS	RBr	Sandy	M		N	Hard; sandy
	71.0	17.0					SS	LRBr-PBr	VF-F	M	S	N	
	71.2	0.2					MS-SS	Gy-DGy	VF-F	S	A	N	Interbedded SS & MS
	73.0	1.8	0.033	0.22	4.65		MS-SS						
	74.2	1.2					MS-SS	Gy-DGy	VF-F	S	A	N	Interbedded SS & MS
	74.6	0.4	0.018	0.13	11.95		MS-SS						
	75.9	1.3	1.05	3.15	5.09		SS						
	77.55	1.65	0.17	0.73	7.62		SS						
	77.83	0.28	1.67	1.82	13.8		SS						
	78.90	1.07	0.066	1.60	40.6		SS						
	82.0	3.1					MS	Gn		M		N	
	84.0	2.0					SS	RBr-Gn	VF	M	N	N	MS top and bottom RBr

Drill hole No. **GT-27**
Total depth **60.2**
Collar elev. **5,745.9**
Map coord. N, E

Claim **Georgeto**
Area **Slick Rock**
Co., State **San Miguel, Colorado**
Sec. **30** T. **44 N.** R. **18 W.**

Date drilled **11/13-15/48**
Date logged **11/15/48**
Logged by **C. Weissner**

1" = 50'

Interpretative summary of log **Favorable; ore zone 22'; good altered MS; fair cbn; color good**

Footage		Chemical assay(%)			Gamma-ray	Description							
From	To	Feet	U ₃ O ₈	V ₂ O ₅	CaCO ₃	% of eU ₃ O ₈	Rock	Color	Grain	Bdg	MS in SS	Cbn	Other remarks
0.0	20.0	20.0					SS	PBr	F-MF	S	S	N	MS:Gn
	28.5	8.5					SS	Mottled	VF-F	S	A	N	MS mottled
	45.2	16.7					SS	PBr	VF-F	S	S	N	Carbon near base FK
	45.5	0.3	0.015	0.67	1.09		SS						
	49.1	3.6	0.014	0.10	3.20		SS					S	
	50.0	0.9					SS	PBr	VF-F	S	S	S	
	60.2	10.2					MS	Gn-RBr					Sandy

Drill hole No. GT-30
Total depth 110.3
Collar elev. 5,772.1
Map coord N, E

Claim Georgeto
Area Slick Rock, Georgetown group
Co., State San Miguel, Colorado
Sec. 30 T. 44 N. R. 18 W.

Date drilled 11/15-17/48
Date logged 11/16-17/48
Logged by C. Meissner

Interpretative summary of log Semi-favorable, favorable carbon and color; limy MS Gn at base; ore zone from 71.5' to 107.0'

Footage			Chemical assay (%)			Gamma-ray	Description						
From	To	Feet	U ₃ O ₈	V ₂ O ₅	CaCO ₃	% of eU ₃ O ₈	Rock	Color	Grain	Bdg	MS in SS	Cbn	Other remarks
0.0	14.5	14.5					MS	RBr		M		N	LS at top; interbedded SS
	35.0	20.5					SS	LRBr	(F-MF/MP-M)A		S	N	
	39.0	4.0					MS	Mot.	Sandy	M	A	N	Sandy at base
	68.5	29.5					SS	L-PBr	F-MF	S	S	S	Flakes of carbon
	71.5	3.0					MS	RBr	VF	M		N	Thin LS at top
	81.2	9.7					SS	LBr	VF	M	S	N	Carbon flakes
	82.7	1.5	0.002	0.08	3.04		SS						
	89.65	6.95					SS	LBr/LGn	VF-F	M	S	S	
	90.45	0.80	0.001	0.12	4.5		SS						
	91.10	0.65					SS	LBr/LGn	VF-F	M	S	S	
	92.00	0.90	0.024	0.17	1.74		SS						
	93.25	1.25	0.93	1.83	0.34		SS						
	102.75	9.50	0.022	0.16	4.59		SS						
	107.00	4.25					MS	Gn.	Sandy	M		N	Sandy
	110.50	3.50					ST	RBr		M		N	Hard; muddy

Drill hole No. **GT-38**
Total depth **119.0**
Collar elev **5,772.7**
Map coord **N, E**

Claim **Georgeto**
Area **Slick Rock, Georgetown group**
Co., State **San Miguel, Colorado**
Sec. **30 T. 44 N. R. 18 W.**
Date drilled **11/20-23/48**
Date logged **11/22-23/48**
Logged by **C. Meissner**

Interpretative summary of log **Ore zone SS split; favorable; favorable grain size and color, carbon, limy beds at base, favorable MS; Ore zone from 49.5 to 89.5'.**

Footage		Chemical assay (%)			Gamma-ray	Description							
From	To	Feet	U ₃ O ₈	V ₂ O ₅	CaCO ₃	% of eU ₃ O ₈	Rock	Color	Grain	Bdg	MS in SS	Cbn	Other remarks
0.0	24.0	24.0					MS	RBr		M	A	N	Interbedded SS
	49.0	25.0					SS	LPBr	VF-M	A	S	N	
	49.5	0.5					CL	Gn		M		N	
	63.2	13.7					SS	PBr-Wh	VF-F	M	S	N	GnCL flakes
	64.0	0.8	0.0035	0.13	2.09		MS						
	65.1	1.1	0.79	3.75	0.22		SS						
	65.35	0.25	0.013	1.20	0.10		SS	LGy	VF-F	A		S	Cbn flakes and fms.
	65.75	0.40	0.016	0.27	0.85		SS						
	79.0	13.25					SS	PBr	VF-MF	M	S	N	Gn MS flakes at base
	82.0	3.0					SS	PGn	VF	M	A	N	Coloring due to Gn MS
	89.5	7.5					SS	LBr	VF-F	M	S	N	
	89.7	0.2					CS	Gn		M		N	
	104.0	14.3					SS	PBr	VF-F	A	A	S	Cbn flakes near top
	112.0	8.0					MS	Gn		M		N	
	119.0	7.0					SS	LGy	VF	M	S	N	Silty thin LS at top

Drill hole No. **GT-39**
 Total depth **114.0**
 Collar elev **5,769.7**
 Map coord N, E

Claim **Georgeto**
 Area **Slick Rock, Georgetown group**
 Co., State **San Miguel, Colorado**
 Sec. **30 T. 44 N. R. 18 W.**

Graphic Log
 1" = 50'
 Date drilled **11/23-24/48**
 Date logged **11/24/48**
 Logged by **C. Meissner**

Interpretative summary of log **Favorable; carbon favorable color; ore zone from 46.0' to 102.5'**

Footage			Chemical assay(%)			Gamma-ray	Description						
From	To	Feet	U ₃ O ₈	V ₂ O ₅	CaCO ₃	% of eU ₂ O ₈	Rock	Color	Grain	Bdg	MS in SS	Cbn	Other remarks
0.0	22.5	22.5					MS	RBr		M		N	Interbedded SS
	44.0	21.5					SS	LREr	VF-M	A	A	S	Carbon in Gn MS
	46.0	2.0					MS	Gn	VF	M	A	N	Some SS lenses
	64.75	18.7					SS	VF-F	PBr	A	A	S	
	65.50	0.75	0.038	0.18	1.71		SS						
	66.20	0.70	0.24	1.95	1.37		SS						
	70.30	4.10					SS	PBr	VF-MF	A	A	S	Cbn flakes throughout
	70.60	0.30	0.011	0.15	7.9		SS						
	70.90	0.30					SS	PBr	VF-MF	A	A	S	
	71.20	0.30	0.006	0.06	44.9		SS						
	74.50	3.30					MS	GyGn		M		N	LS bed at top of unit
	74.80	0.30	0.009	0.05	2.7		SS						
	96.50	21.70					SS	PBr	VF-F	M	S	S	MS fms. near base
	97.35	0.85	0.32	1.74	0.07		SS						
	99.85	2.50	0.017	0.11	1.68		SS						
	102.50	2.65					SS	LBr	F-MF	M	S	S	
	102.80	0.30	0.01	0.11	6.8		MS						
	103.10	0.30	0.011	0.06	3.1		MS	Gn		M		N	
	114.00	10.90					MS	RBr					

U.S. Geological Survey

GEOLOGIC AND ASSAY LOG

Colorado Plateau project
Graphic Log

Drill hole No. GT-44
Total depth 84.25
Collar elev 5,756.3
Map coord N, E

Claim Georgeto
Area Slick Rock, Georgetown group
Co., State San Miguel, Colorado
Sec. 30 T. 44N. R. 18W.

Date drilled 11/30-12/2/48
Date logged 11/30-12/2/48
Logged by E. V. Shoemaker

Interpretative summary of log Semi-favorable; some Gn Gy MS, some carbon, no GnGy MS at base
ore zone from 28.0' to 72.0'

Footage			Chemical assay (%)				Gamma-ray	Description					
From	To	Feet	U ₃ O ₈	V ₂ O ₅	CaCO ₃	% of eU ₃ O ₈	Rock	Color	Grain	Bdg	MS in SS	Cbn	Other remarks
0.0	24.5	24.5					SS	PBr/PBr	MF/M	S	S	N	MS:RBr; RBr and GnGy
	28.0	3.5					MS	RBr					Mottled GnGy at base
	49.5	21.5					SS	PRBr-PBr	F-MF	S	S	S	MS:GnGy
	58.0	8.5					SS	Wh/RBr	VF/F	S	S	S	MS:RBr; cbn along bedding
	72.5	14.5					SS	RBr/PBr	F-MF/F	A	S	S	MS:RBr/GnGy
	74.0	1.5					MS	DGy					Hard; silty
	74.25	0.25					SS	PBr	MF-F		S	S	MS:GnGy
	74.95	0.700	0.010	0.19	14.1		SS						
	77.00	2.05					SS	PBr	MF-F		S	S	MS:GnGy
	84.0	7.0					MS	RBr-GnGy	VF		A		SS bottom RBr

Drill hole No. GT-52
 Total depth 100.1
 Collar elev. 5,772.8
 Map coord N, E

Claim Georgeto
 Area Slick Rock-Georgetown group
 Co., State San Miguel, Colorado
 Sec. 30 T. 44 N. R. 18 W.

Graphic Log
 1" = 50'
 Date drilled 1/31-2/3/49
 Date logged 2/1-3/49
 Logged by R. H. and C. R. M.

Interpretative summary of log Favorable; color favorable; MS content; poor carbon; ore zone from 26.8 to 91.0'

Footage			Chemical assay (%)			Gamma-ray	Description						
From	To	Feet	U ₃ O ₈	V ₂ O ₅	CaCO ₃	% of eU ₃ O ₈	Rock	Color	Grain	Bdg	MS in SS	Cbn	Other remarks
0.0	3.3	3.3						Topsoil					
	6.2	2.9					SS	LGyGn	F-MF	N	S	N	Color due to GyGn MS
	11.7	5.5					MS	RBr					Sandy
	15.1	3.4					SS	LGy	F	N	N	N	
	20.1	5.0					MS	RBr					Sandy
	25.0	4.9					SS	LRBr	F-VF	N	A	N	MS:RBr
	26.8	1.8					MS	RBr					
	39.2	12.4					SS	RBr	MF-F	N	A	N	MS:RBr
	74.45	35.25					SS	LGy/PBr	MF/F	M	S	S	Cbn at 55'; MS seam at base
	76.15	1.70	0.026	0.70	1.1		MS						
	76.97	0.82	0.029	1.51	1.6		SS						
	77.15	0.18					SS	LGy	F	M	N	N	
	77.45	0.30	0.004	0.07	4.7		SS						
	91.00	13.55					SS	LGy	F	M	N	N	
	100.10	9.10					MS	GyGn/RBr					Interbedded hard SS

Drill hole No. **GT-57**
Total depth **115.4**
Collar elev **5,780.9**
Map coord N, E

Claim **Georgeto**
Area **Slick Rock**
Co., State **San Miguel, Colorado**
Sec. **30** T. **44 N.** R. **18 W.**

Date drilled **2/3, 4, 5/49**
Date logged **2/7/49**
Logged by **J. A. M.**

Interpretative summary of log **Semi-favorable; some carbon, color good; altered MS good; ore zone from 25.4 to 86.6'**

Footage		Feet	Chemical assay (%)			Gamma-ray % of eU ₃ O ₈	Description					
From	To		U ₃ O ₈	V ₂ O ₅	CaCO ₃		Rock	Color	Grain	Bdg	MS in SS	Cbn
C.0	10.4	10.4				MS	RBr					
	17.1	6.7				MS	GyGn					Some RBr:MS
	20.3	3.2				SS	RBr	F	M	A	N	Some RBr:MS at top
	25.4	5.1				MS	RBr					GyGn:MS top and bottom
	30.4	5.0				SS	RBr	F	M	S	N	
	34.0	3.6				MS	RBr					
	50.4	16.4				SS	RBr/Br	F/MF	S	S	S	
	86.25	35.85				SS	PBr-PCy	MF/F	M	S	S	
	86.50	0.25	0.013	0.14	0.53	SS						
	86.60	0.1				SS	PBr-PCy	MF/F	M	S	S	
	87.2	0.6				MS	GyGn					
	98.3	11.1				SS	GyGn/Br	F	M	S	S	MS:GyGn
	109.0	10.7				MS	RBr					GyGn:MS
	113.2	4.2				SS	PGyGn	F	M	S	N	
	114.1	0.9				MS	GyGn					
	115.4	1.3				ST	RBr	VF	M	A		Mottled

Drill hole No. GT-61
Total depth 129.5
Collar elev. 5,784.4
Map coord N, E

Claim Georgeto
Area Slick Rock
Co., State San Miguel, Colorado
Sec. 30 T. 44 N. R. 18 W.

Date drilled 2/7-10/49
Date logged 2/11/49
Logged by R. H.

Interpretative summary of log Semi-favorable; fair altered MS; no carbon; little Fe stain;
ore zone from 38.8' to 124.0'

Footage		Chemical assay(%)			Gamma-ray	Description							
From	To	Feet	U ₃ O ₈	V ₂ O ₅	CaCO ₃	% of eU ₃ O ₈	Rock	Color	Grain	Bdg	MS in SS	Cbn	Other remarks
0.0	5.4	5.4					Topsoil						
	8.1	2.7					SS	LGy	F	N	N	N	
	15.3	7.2					MS	RBr					
	20.0	4.7					SS	LGy/RBr	F-VF	N	S	N	MS:RBr
	21.0	1.0					MS	RBr					
	24.0	3.0					SS	LGy	F	N	N	N	Dense
	27.0	3.0					SS	RBr	F-VF	N	A	N	Muddy
	37.3	10.3					SS	LR-Gy	F/M-MF	N	S	N	MS:RBr
	38.8	1.5					MS	RBr					
	93.2	54.4					SS	LBr/PBr	M-MF	S	S	N	MS:GyGn
	99.7	6.5					SS	GnGy	VF/F	N	A	N	Muddy
	117.5	17.8					SS	LGyGn	F	S	S	N	MS:GyGn; CaCO ₃ in fract.
	118.0	0.5	0.16	1.30	2.6		SS						
	119.3	1.3	0.021	0.07	1.7		SS						
	119.75	0.45	0.03	0.01	1.9		SS						
	120.80	1.05					SS	PBr	M-MF	N	S	N	MS:GyGn
	124.27	3.47	0.012	0.02	2.5		SS						
	129.50	5.23					MS	GnGy					SS:PBr at top

U. S. Geological Survey

GEOLOGIC AND ASSAY LOG

Colorado Plateau project

Graphic Log

1" = 50'

Drill hole No. GT-62
 Total depth 30.40
 Collar elev 5,753.8
 Map coord _____ N, _____ E

Claim Georgeto
 Area Slick Rock
 Co., State San Miguel, Colorado
 Sec. 30 T. 44 N. R. 18 W.

Date drilled 2/7/49
 Date logged 2/8/49
 Logged by J. A. MacKallor

Interpretative summary of log Favorable; ore zone 25'; some carbon; color good; altered MS fair;
small amount limonite

Footage			Chemical assay (%)			Gamma-ray	Description						
From	To	Feet	U ₃ O ₈	V ₂ O ₅	CaCO ₃	% of eU ₃ O ₈	Rock	Color	Grain	Bdg	MS in SS	Cbn	Other remarks
0.0	4.8	4.8					Soil						No recovery
	15.1	10.3					SS	PBr/LBr	F-MF	S	S	S	Very favorable SS
	15.4	0.3	0.006	0.11	34.3		SS						
	25.7	10.3					SS	PBr/LBr	MF-F	S	S	S	Small amount limonite
	28.4	2.7					MS	RBr					Poor recovery
	30.4	2.0					ST	RBr	VF				

U. S. Geological Survey

GEOLOGIC AND ASSAY LOG

Colorado Plateau project

Graphic Log

1" = 50'

Drill hole No. GT-63

Claim Georgeto

Total depth 30.60

Area Slick Rock

Date drilled 2/7/49

Collar elev. 5,751.6

Co., State San Miguel, Colorado

Date logged 2/8/49

Map coord N, E

Sec. 25 T. 44 N. R. 19 W.

Logged by J. A. MacKallor

Interpretative summary of log Favorable; ore zone 26'; some RBr MS; some carbon; color good, poor basal altered MS

Footage			Chemical assay (%)			Gamma-ray	Description						
From	To	Feet	U ₃ O ₈	V ₂ O ₅	CaCO ₃	% of eU ₃ O ₈	Rock	Color	Grain	Bdg	MS in SS	Cbn	Other remarks
0.0	3.1	3.1					Soil						No recovery
	19.8	16.7					SS	LBr-PBr	F-MF	S	S	S	
	25.4	5.6					MS	RBr-GyGn					
	25.7	0.3	0.004	0.01	17.6		SS						
	26.2	0.5					SS	Gy	F	S	S	N	
	30.6	4.4					MS	GyGn/RBr					0.3' GyGn MS at 26.8'

Drill hole No. **GT-70**
 Total depth **140.0**
 Collar elev. **5799.0**
 Map coord N, E

Claim **Georgeto**
 Area **Slick Rock**
 Co., State **San Miguel, Colorado**
 Sec. 30 T. **44 N.** R. **18 W.**

Graphic Log
 1" = 50'
 Date drilled **4/14-16/50**
 Date logged **4/17/50**
 Logged by **C. F. Withington**

Interpretative summary of log **Favorable; RBr:SS at top; fair carbon; good MS; ore zone from 50.8' to 116.4'**

Footage			Chemical assay (%)			Gamma-ray	Description						
From	To	Feet	U ₃ O ₈	V ₂ O ₅	CaCO ₃	% of eU ₂ O ₈	Rock	Color	Grain	Bdg	MS in SS	Cbn	Other remarks
0.0	30.0	30.0					No core						
	31.9	1.9					MS	RBr					
	36.0	4.1					SS	LGy	F	M	S	N	SS tight
	37.3	1.3					MS	RBr					
	39.0	1.7					SS	LGy	F	M	N	N	
	42.5	3.5					MS	RBr					
	46.5	4.0					SS	PRBr	MF	M	S	N	
	50.8	4.3					MS	RBr					
	51.2	0.4					SS	RBr	M-MF	M	S	N	
	62.8	11.6					SS	PRBr	MF-M	M	S	N	
	76.0	13.2					SS	PBr	M-MF	M	S	N	Some MC grains; MS:GyGn
	76.6	0.6					MS	GyGn					
	90.0	13.4					SS	LGn-LGy	F-VF	M	S	N/S	MS:Gy; trace cu
	90.7	0.7					SS	PGyGn	F	M	S	S	MS:Gy
	94.67	3.97					SS	PGyGn	VF	M	N	S	
	96.17	1.5	0.005	0.39	2.7		SS						
	97.80	1.63	0.14	0.82	1.32		SS						
	98.05	0.25	0.97	3.04	0.58		SS						
	98.30	0.25	0.48	4.47	2.02		SS						
	99.80	1.50	0.22	1.48	2.9		SS						
	100.00	0.20	0.038	0.34	2.11		SS						
	101.00	1.00					SS	PGy	MF	M	S	N	MS:Gy
	103.35	2.35	0.007	0.13	3.0		SS						
	103.85	0.50					SS	PGy	MF	M	S	N	MS:Gy
	106.60	2.75	0.015	0.18	6.4		SS	Gy	F-MF	M	Muddy	N	
	107.10	0.50					SS	Gy	F-MF	M	Muddy	N	
	109.10	2.00	0.009	0.18	7.4		SS						
	115.34	6.24					SS	Gy	F-MF	M	Muddy	N	
	116.34	1.00	0.007	0.09	15.9		SS						

Continued next page--

Hole No. **GT-70**

Drill hole No. **GT-70 (Cont'd)**
 Total depth **140.0**
 Collar elev. _____
 Map coord _____ N, _____ E

Claim **Georgeto**
 Area **Slick Rock**
 Co., State **San Miguel, Colorado**
 Sec. **30** T. **44 N.** R. **18 W.**

Graphic Log
 1" = 50'
 Date logged _____
 Logged by _____

Interpretative summary of log _____

Footage		Feet	Chemical assay(%)			Gamma-ray % of eU ₃ O ₈	Description					
From	To		U ₃ O ₈	V ₂ O ₅	CaCO ₃		Rock	Color	Grain	Bdg	MS in SS	Cbn
116.34	116.40	0.06				SS	Gy	F-MF	M	Muddy	N	
	118.60	2.2				MS	DGyGn					
	121.50	2.9				SS	DGy	VF	M	N	N	Hard
	125.00	3.5				MS	RBr					
	129.0	4.0				SS	LGy	F	M	N	N	Hard
	130.2	1.2				MS	GyGn					
	140.0	9.8				MS	RBr					

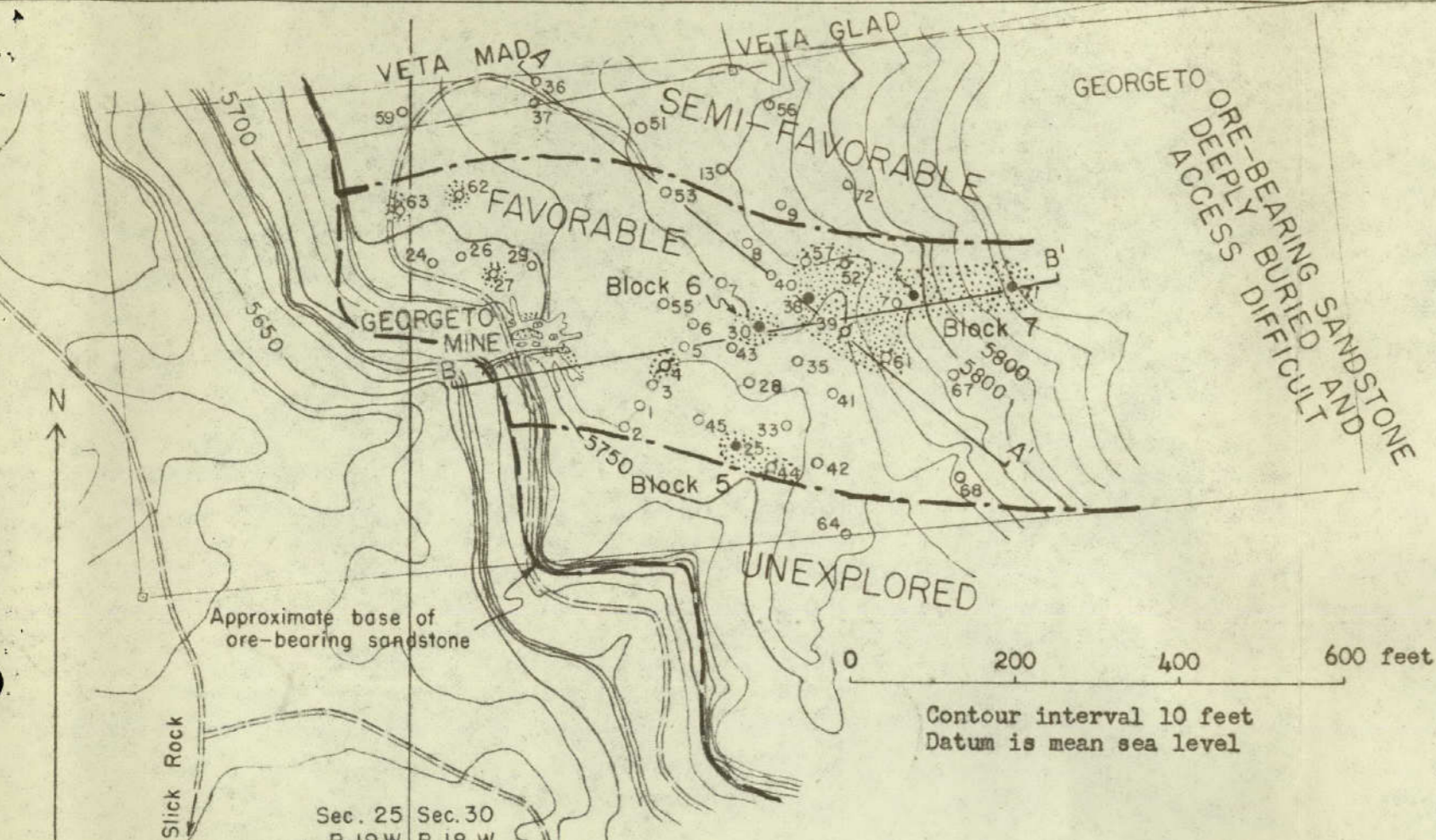
Drill hole No. GT-71
 Total depth 173.1
 Collar elev 5337.3
 Map coord N, E

Claim Georgeto
 Area Slick Rock
 Co., State San Miguel, Colorado
 Sec. 30 T. 44 N. R. 18 W.

Date drilled 4/14-18/50
 Date logged 4/19/50
 Logged by C. Tschanz

Interpretative summary of log Favorable; MS color good carbon poor, ore zone from 110.6' to 166.7'

Footage			Chemical assay (%)			Gamma-ray	Description						
From	To	Feet	U ₃ O ₈	V ₂ O ₅	CaCO ₃	% of eU ₃ O ₈	Rock	Color	Grain	Bdg	MS in SS	Cbn	Other remarks
0.0	77.0	77.0					No core						
	86.6	9.6					MS	R					
	87.0	0.4					SS	Gy	VF	M	S	N	MS:GyGn
	89.5	2.5					SS	R	VF	M		N	Muddy
	90.3	0.8					MS	R					
	104.6	14.3					SS	R-Gy	F-VF	M		N	Muddy
	107.4	2.8					MS	R					
	109.5	2.1					SS	LR	F-VF	M	S	N	Dense
	110.6	1.1					MS	R					
	122.5	11.9					SS	LR/PBR	F	M	S	N	MS:R
	132.4	9.9					SS	PBR	F-MF	M	N	N	
	133.1	0.7					SS	LGn	F-VF	M	A	N	MS:Gn
	151.2	18.1					SS	PBR	F-MF	M	S	N	MS:Gn
	154.2	3.0					SS	PBR	MF-M	M	A	N	MS:Gn
	155.14	0.94					SS	PBR	F-MF	M	S	N	MS:Gn
	156.83	1.69	0.009	0.15	1.51		SS						
	157.00	0.17					SS	PBR	F-MF	M	S	N	MS:Gn
	158.70	1.70	0.88	3.40	0.48		SS						
	159.00	0.30	0.34	3.79	0.31		SS						
	160.70	1.70	0.18	2.78	4.2		SS						
	161.00	0.30	0.089	1.34	13.5		SS						
	161.85	0.85	0.015	0.31	11.4		SS/ST						
	162.60	0.75					ST	LGyGn					
	166.7	4.1					SS	LGy	F-VF	M	S	N	MS:Gn
	168.7	2.0					MS	GnGy					
	172.4	3.7					SS	LGy	F	M	S	N	Dense; MS:Gn
	172.8	0.4					MS	Gn					
	173.1	0.3					MS	R					

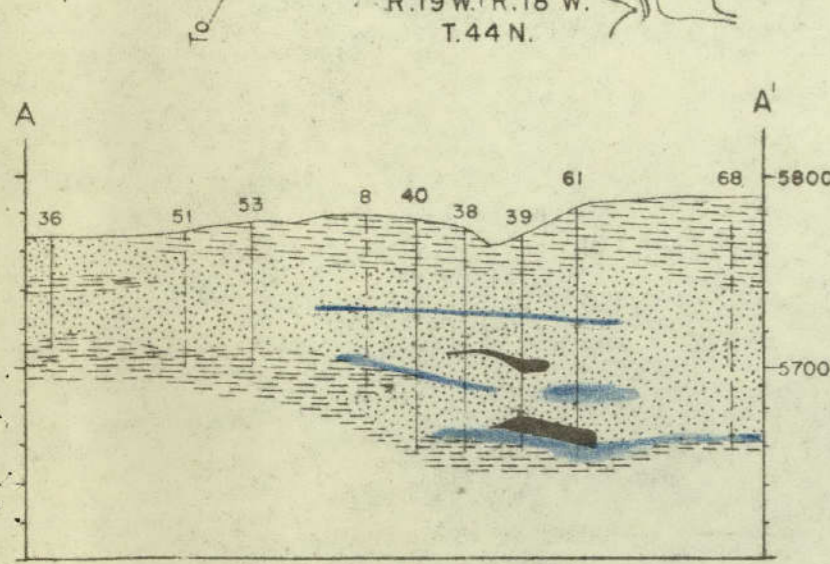


EXPLANATION
Map

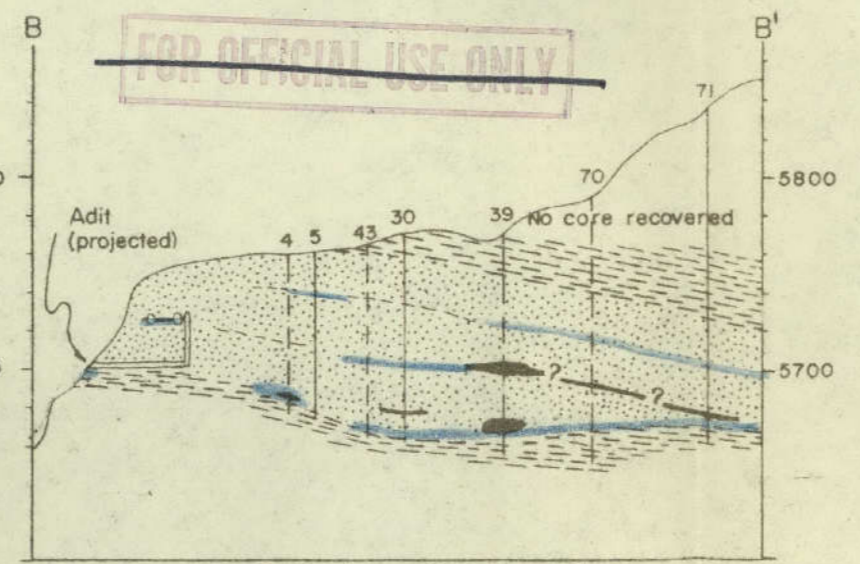
- Boundary of favorable and semi-favorable ground
- Ground underlain by carnotite-bearing rock (includes reserve blocks where indicated by block number)
- Mine working, underground (approximate outline)
- Claim stake or monument found in field
- Diamond-drill holes, Geological Survey (Numbers on caps of standpipes left in holes all have the prefix GT. Drill holes are located by plane-table methods.)
- Barren
- Weakly mineralized (less than 0.10% U₃O₈ and 1.0% V₂O₅ or less than 1 foot thick regardless of grade)
- Ore-bearing (0.10% or more U₃O₈ or 1.0% or more V₂O₅ and 1 foot or more thick)

Geologic sections

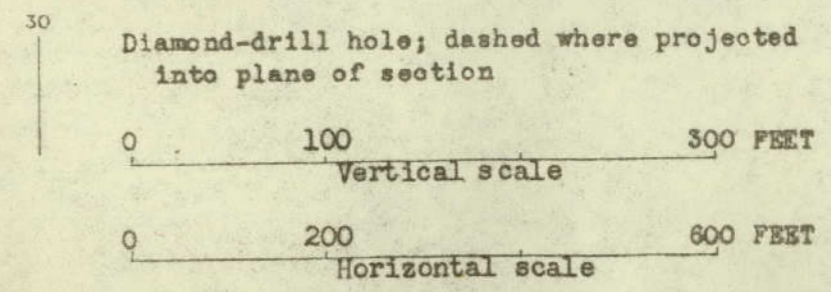
- Red mudstone and barren sandstone
- Gray mudstone
- Ore-bearing sandstone
- Carnotite-bearing rock; inferred connections are shown by (?)
- Mine workings, underground (approximate outline)



Geologic section A-A'



Geologic section B-B'



Map and geologic sections of reserve blocks 5, 6, and 7; Georgeto claim, NW 1/4 sec. 30, T. 44 N., R. 18 W., San Miguel County, Colorado
September 1950