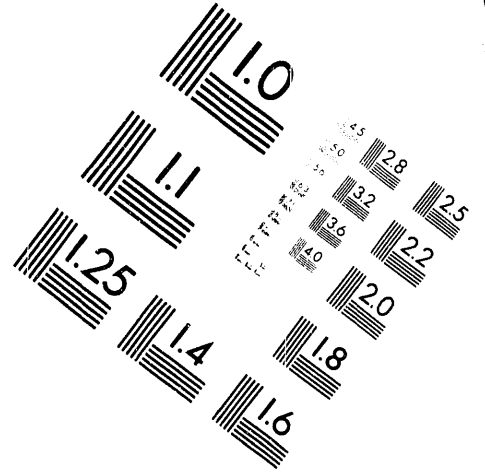
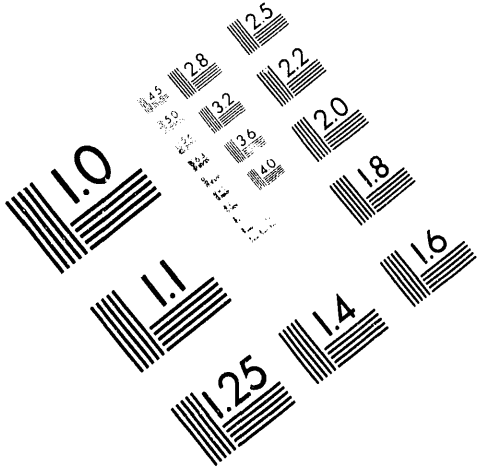




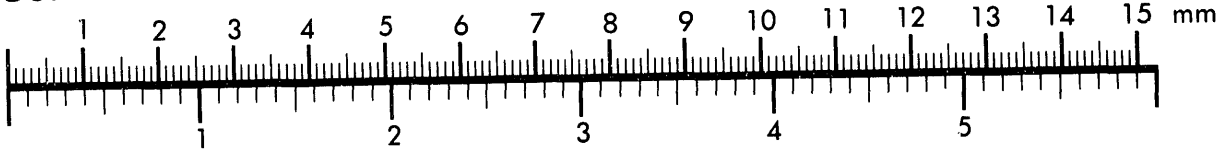
AIM

Association for Information and Image Management

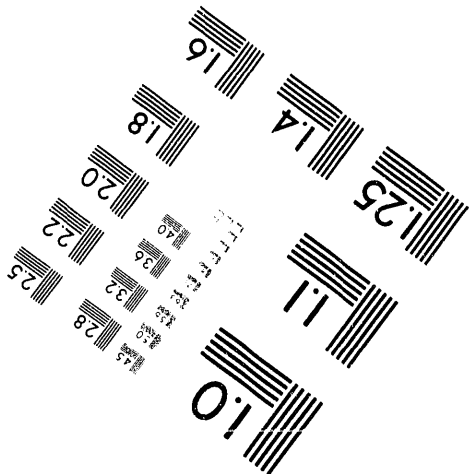
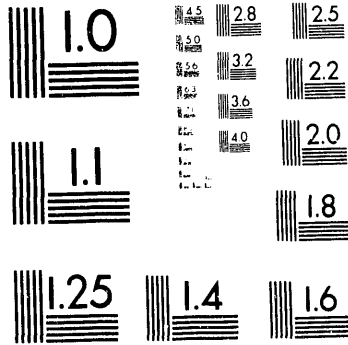
1100 Wayne Avenue, Suite 1100
Silver Spring, Maryland 20910
301/587-8202



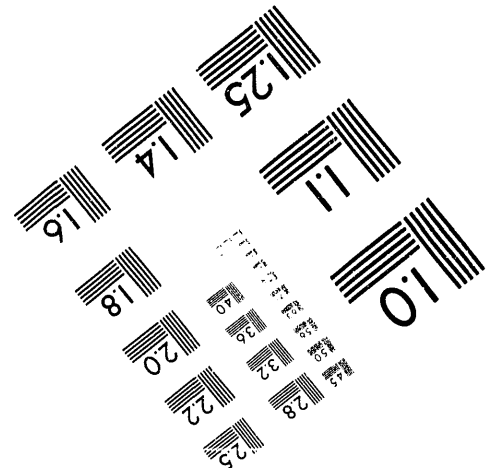
Centimeter



Inches



MANUFACTURED TO AIM STANDARDS
BY APPLIED IMAGE, INC.



1 of 2

DOE REAL PROPERTY

A YEARLY STATISTICAL HANDBOOK

FISCAL YEAR 1992

U.S. DEPARTMENT OF ENERGY

OFFICE OF THE
ASSOCIATE DEPUTY SECRETARY FOR FIELD MANAGEMENT

WASHINGTON, D.C.



Printed with soy ink on recycled paper

MASTER

CP

DISTRIBUTION OF THIS DOCUMENT IS UNLIMITED

TABLE OF CONTENTS

	<i>Page</i>
Introduction	
Foreword	1
DOE at a Glance	1
Data Groupings	2
Accuracy	2
Definitions	3
DOE in Perspective	3
DOE Comparative Statistics	4
Land	
Owned or controlled	
By Acquisition Method	5
By Field Organization	5
By Installation	6
By State	7
Leased	
By Field Organization	9
By State	9
Buildings	
Definitions	11
Departmentwide	
By Usage (Acquisition Cost and Improvement Cost)	11
By Usage (Gross Sq. Ft., Net Occupiable Sq. Ft, Number of Buildings, and Weighted Average Age)	15
By Usage (Gross Sq. Ft. Owned, Gross Sq. Ft. Leased, and Leased Annual Rental Cost)	19
Leased - By Field Organization (Gross Sq. Ft., Gross Annual Rent, and Annual Rent Per Sq. Ft.)	22
Leased - By State (Gross Sq. Ft., Gross Annual Rent, and Annual Rent Per Sq. Ft.)	23
By Type of Construction (Gross Sq. Ft. and Acquisition Cost)	24
By Installation (Number of Buildings and Gross Square Feet)	25
By Field Organization (Gross Sq. Ft.)	26
By Sponsoring Headquarters Organization and Program (Gross Sq. Ft.)	27
Field Organizations - By Usage (Gross Square Feet)	
Albuquerque Field Office	29
Chicago Field Office	32

TABLE OF CONTENTS (CONTINUED)

	<i>Page</i>
Idaho Field Office	35
Morgantown Energy Technology Center	37
Naval Petroleum Reserves in California	37
Nevada Field Office	38
Oak Ridge Field Office	40
Pittsburgh Energy Technology Center	42
Pittsburgh Naval Reactors Office	43
Richland Field Office	44
Rocky Flats Office	46
San Francisco Field Office	47
Savannah River Field Office	50
Schenectady Naval Reactors Office	51
Southwestern Power Administration	52
Strategic Petroleum Reserve Project Office	52
Superconducting Super Collider Project Office	53
Western Area Power Administration	53
Sponsoring Headquarters Organizations - By Usage (Gross Square Feet)	
Civilian Radioactive Waste Management	54
Conservation and Renewable Energy	55
Defense Programs	55
Energy Research	59
Environment, Safety and Health	61
Environmental Restoration and Waste Management	62
Fossil Energy	64
New Production Reactors	66
Nuclear Energy	66
Work For Others	68
Other	69
Other Structures and Facilities	
Departmentwide - By Usage (Total Units and Total Cost)	73
Field Organizations -By Usage (Total Units and Total Cost)	
Albuquerque Field Office	78
Chicago Field Office	81

TABLE OF CONTENTS (CONTINUED)

	<i>Page</i>
Idaho Field Office	83
Morgantown Energy Technology Center	85
Naval Petroleum Reserves in California	87
Nevada Field Office	88
Oak Ridge Field Office	89
Pittsburgh Energy Technology Center	92
Pittsburgh Naval Reactors Office	93
Richland Field Office	95
Rocky Flats Office	97
San Francisco Field Office	98
Savannah River Field Office	100
Schenectady Naval Reactors Office	101
Southwestern Power Administration	103
Strategic Petroleum Reserve Project Office	103

INTRODUCTION

FOREWORD

To accomplish its diverse and complex missions, the Department of Energy (DOE) relies on a physical plant that includes some of the world's most sophisticated and costly facilities. Many are unique to the Department and represent the state of the art in research, development, and production facilities.

The replacement plant value of DOE buildings is more than \$61.7 billion and in FY 1992 DOE spent over \$924 million to maintain its real property. DOE Headquarters and field facilities support the activities of over 19,800 Federal and over 149,000 contractor employees.

As a Federal agency with such far reaching responsibilities, we are committed to managing this complex physical plant in the most efficient and cost effective manner consistent with the Nation's long range goals and objectives for the Department.

To assist in the tracking, reporting and management of this real property, the Department has in place an automated inventory information system that lists pertinent information regarding these facilities. The system, called the Real Property Inventory System (RPIS2), is an integrated database which is maintained by the DOE field organizations.

DOE AT A GLANCE

Land	2,370,542	Acres
Buildings	115,440,574	Gross Square Feet
Other Structures and Facilities		
	35,510	Miles of Road
	14,004,034	Linear Feet of Security Fencing
	4,209,600	Linear Feet of Water Lines
Laboratory Buildings	27,242,110	Gross Square Feet
Production Buildings	39,854,442	Gross Square Feet
Office Buildings	16,866,501	Gross Square Feet
Replacement Plant Value of Buildings	\$61,780,697,648	
Real Property Maintenance Expense - FY 1992	\$924,403,000	
Real Property Rental Expense - FY 1992		
Land	\$ 1,897,907	
Buildings	56,298,241	
Total	\$58,196,148	

FOREWORD (CONTINUED)

RPIS2 includes all DOE controlled real property except that which is managed by the Alaska and Bonneville Power Administrations. The system also does not include any property that is assigned to DOE by the General Services Administration (GSA).

RPIS2 is housed in DOE's central computer facility in Germantown, Maryland. The Headquarters' custodian for the RPIS2 is the Facilities Planning and Acquisition Branch of the Facilities Management Division, Office of Organization, Resources and Facilities Management. Field organizations are solely responsible for the accuracy and timeliness of the basic data. Access to the RPIS2 is limited to authorized password holders whose eligibility is determined by the respective field organizations and Headquarters.

This handbook is prepared as a resource for Department officials and others who have a need to reference real property data as part of their day-to-day functions. It is intended as an internal working document, and the

information contained within represents a compilation or analysis of regularly available data which is housed in the RPIS2. It is not intended to represent the Department's official estimate of the reported real property holdings, nor is it an exhaustive treatment of all the information which is available on real property. Official reports of real property are available from the GSA as part of the Federal Government's report of world-wide real property holdings. While every effort has been made to ensure accuracy of the information, there can be no guarantee that errors are not present in the data. The information is intended as a representation of the more commonly requested items of data. More detailed reports and treatments of the data are possible. Interested parties are encouraged to request a password to gain access to the system.

For further information on RPIS2, please call the Facilities Planning and Acquisition Branch (AD-141) phone number (202) 586-1191.

DATA GROUPINGS

Information is arranged from broad Department levels through more narrow state, field office and installation tables. Information is provided first on DOE owned or controlled land, then on buildings, and finally on other structures and facilities (OSF). Other structures and facilities are real property components such as exterior

utilities, roads, parking lots, exterior lighting, storage tanks, railroad tracks, and other similar items.

The information is limited to real and related personal property holdings. Data on equipment holdings is available from other Department sources.

ACCURACY

While every attempt has been made to maintain accuracy, readers are cautioned to reference these statistics as "Year Ending - FY 1992." Since the RPIS2 operates as a real time integrated database, current statistics will not match precisely the information listed in this handbook. Totals for calculated columns may

not match exactly from report to report due to limitations in software capabilities. Where these differences occur, they are not mathematically significant. If more current information is required, it can be obtained from the Facilities Planning and Acquisition Branch (AD-141).

DEFINITIONS

1. **Annual Maintenance of Real Property:** Includes operating funds for the maintenance of real property.
2. **Annual Rental Expense:** Annual payment of rent by DOE or its contractors for facilities controlled by DOE. Does not include GSA rent payments.
3. **Buildings:** Includes both owned and leased buildings, but does not include buildings assigned to us by GSA.
4. **Land:** Includes all land, regardless of method of acquisition.
5. **Other Structures and Facilities:** A representative sample of major facilities other than buildings.
6. **Real Property:** Land and anything permanently affixed to the land, such as buildings, fences, and those things attached to buildings, such as light fixtures, plumbing and heating fixtures, or other such items which would be personal property if not attached.
7. **Replacement Value:** The cost to replace an existing facility with a new facility of comparable size, using current technology, codes, standards, and materials. This is an estimated quantity based on assigning dollar values to the broad categories shown, but does not include the cost of the land.

DOE IN PERSPECTIVE

The U.S. General Services Administration has reported that as of September 1989, the United States Government owned or controlled:

- 663 million acres of land.
- 2,834 billion square feet of buildings with an acquisition value of \$172 billion.
- 32,066 installations.

As of September 1992, the Department of Energy portion owned or controlled:

- 2.37 million acres of land
- 115.44 million square feet of buildings
- \$15.13 billion acquisition cost of buildings and other structures and facilities
- 670 installations

DOE COMPARATIVE STATISTICS

- With regard to acquisition value of real property, DOE ranks third among federal agencies after Defense and Interior.
- In acreage controlled, DOE ranks fourth behind Interior, Agriculture and Defense.
- In square footage of buildings owned, DOE ranks fifth after Defense, the General Services Administration, Veteran's Administration, and the Postal Service.
- By predominant use of buildings, DOE is:
 - Second after Defense in service buildings.
 - Second after Defense in research and development buildings.
 - Second after Defense in industrial buildings.
 - Third after Defense and the General Services Administration in storage buildings.
- In dollar value of other structures and facilities, DOE is:
 - First in industrial structures other than buildings.
 - Second after Defense in utility systems.
 - Second after Defense in service structures.
 - Second after Defense in storage facilities other than buildings.
 - Third in amount of railroad track after Defense and Transportation.
 - Third in research and development structures after Defense and the National Aeronautics and Space Administration.
 - Third in power development and distribution systems after Defense and Tennessee Valley Authority.

With regard to real property holdings, DOE exceeds in size, number of facilities, dollar value, and variety of facilities, all but the very largest of corporations. Even within the Federal inventory, only the Defense Department has more variety of facilities. Other Federal agencies tend to predominate in single categories such as land for Interior and Agriculture and office buildings for the General Services Administration.

LAND

LAND HELD DEPARTMENTWIDE - BY ACQUISITION METHOD

The Department of Energy controls land to accomplish its mission. The largest holdings are lands withdrawn from the public domain. Public domain lands are administered by the Bureau of Land Management and, unless withdrawn for use by a Federal agency, are open to settlement and entry by the public. Agency use of these lands must be periodically rejustified and underutilized lands must be relinquished.

Fee land is land purchased by DOE under its authority to acquire property to accomplish its mission and may be purchased on the open market, or through condemnation procedures when necessary.

Finally, when land is required for a limited amount of time or for narrow, specialized uses, it may be obtained through easements, permits, licenses or other long term interests.

<i>Acquisition Method</i>	<i>Acres</i>
Withdrawn from Public Domain	1,471,179.3
Fee	644,639.9
Easement	182,307.1
Permit	27,583.3
License	3.0
Other	44,829.4
Total	2,370,542.0

LAND HELD BY FIELD ORGANIZATION

<i>Field Organization</i>	<i>Acres</i>
Albuquerque Field Office	53,433.5
Chicago Field Office	16,718.0
Idaho Field Office	573,608.7
Morgantown Energy Technology Center	131.7

LAND HELD BY FIELD ORGANIZATION (CONTINUED)

<i>Field Organization</i>	<i>Acres</i>
Naval Petroleum Reserves in California	82,222.0
Nevada Field Office	799,104.7
Oak Ridge Field Office	44,221.1
Pittsburgh Energy Technology Center	129.8
Pittsburgh Naval Reactors Office	201.7
Richland Field Office	359,681.0
Rocky Flats Office	6,545.0
San Francisco Field Office	7,854.1
Savannah River Field Office	198,344.3
Schenectady Naval Reactors Office	8,008.3
Southwestern Power Administration	15,544.2
Strategic Petroleum Reserve Project Office	5,476.4
Western Area Power Administration	199,317.5
Total	2,370,542.0

LAND HELD BY INSTALLATION

<i>Installation</i>	<i>Acres</i>
Argonne National Laboratory - East	1,704.6
Argonne National Laboratory - West	1,899.2
Bates Linear Accelerator Center	91.5
Brookhaven National Laboratory	5,321.1
Fermi National Accelerator Laboratory	6,800.0
Fernald Environmental Management Field Office	1,083.5
Idaho Field Office	569,788.0
Kansas City Plant	122.1
Lawrence Livermore National Laboratory	947.4
Lawrence Livermore National Laboratory - 300 Area	6,906.7
Los Alamos National Laboratory	30,782.1
Morgantown Energy Technology Center	131.7
Mound Plant	305.8

LAND HELD BY INSTALLATION (CONTINUED)

<i>Installation</i>	<i>Acres</i>
Naval Petroleum and Oil Shale Reserve (CO, UT, WY)	9,481.0
Naval Petroleum Reserve (CA)	48,145.0
Nevada Test Site	792,650.9
Oak Ridge Reservation	35,252.0
Paducah Gaseous Diffusion Plant	3,423.2
Pantex Plant	10,080.0
Pinellas Plant	96.9
Pittsburgh Energy Technology Center	59.7
Portsmouth Gaseous Diffusion Plant	3,708.0
Richland Field Office	359,681.0
Sandia National Laboratories, Albuquerque	10,305.1
Sandia National Laboratories, Livermore	377.1
Sandia National Laboratories, Tonopah	335.6
Savannah River Field Office	198,344.3
Strategic Petroleum Reserve Project Office	5,476.4
Other	267,242.1
Total	2,370,542.0

LAND HELD BY STATE

<i>State</i>	<i>Acres Owned</i>	<i>Acres Withdrawn</i>	<i>Acres Other¹</i>	<i>Acres Total</i>
Arizona	562.7	114.0	17,572.6	18,249.3
Arkansas	58.6	0	3,294.0	3,352.6
California	7,774.9	58,726.0	19,458.2	85,959.1
Colorado	1,574.4	4,833.0	25,325.2	31,732.6
Connecticut	19.6	0	0	19.6
Florida	96.9	0	0	96.9
Idaho	59,063.8	510,683.9	1,939.5	571,687.2
Illinois	1,704.6	0	6,800.0	8,504.6
Iowa	150.6	0	4,773.9	4,924.5
Kentucky	3,423.2	0	0	3,423.2
Louisiana	1,696.1	0	1,579.0	3,275.1

LAND HELD BY STATE (CONTINUED)

<i>State</i>	<i>Acres Owned</i>	<i>Acres Withdrawn</i>	<i>Acres Other¹</i>	<i>Acres Total</i>
Maine	3.1	0	0	3.1
Maryland	0	0	124.7	124.7
Massachusetts	0	0	91.5	91.5
Minnesota	40.0	0	3,257.1	3,297.1
Missouri	454.1	0	4,539.4	4,993.5
Montana	448.6	5.4	21,201.2	21,655.2
Nebraska	272.2	0	8,553.5	8,825.7
Nevada	18.7	801,027.3	1,183.3	802,229.3
New Jersey	21.3	0	19.7	41.0
New Mexico	11,951.2	6,299.3	33,272.7	51,523.2
New York	9,788.8	0	3,722.8	13,511.6
North Dakota	376.6	0	25,453.7	25,830.3
Ohio	5,092.7	0	26.7	5,119.4
Oklahoma	77.4	0	7,830.0	7,907.4
Pennsylvania	261.4	0	0	261.4
South Carolina	198,344.3	0	0	198,344.3
South Dakota	708.8	0	35,952.3	36,661.1
Tennessee	35,252.0	0	0	35,252.0
Texas	9,780.2	1,078.3	1,422.8	12,281.3
Utah	13.9	21.7	3,068.8	3,104.4
Virginia	264.6	0	0	264.6
Washington	294,938.0	64,743.0	0	359,681.0
West Virginia	131.7	0	0	131.7
Wyoming	274.9	23,647.4	24,260.2	48,182.5
Total	644,639.9	1,471,179.3	254,722.8	2,370,542.0

¹ Other includes land controlled by easement, permit, license, long term interest or other.

LEASED LAND DATA - BY FIELD ORGANIZATION

<i>Field Organization</i>	<i>Acres</i>	<i>% of Total</i>	<i>Annual Rent</i>	<i>% of Total</i>	<i>Annual Rent Per Acre</i>
Albuquerque Field Office	5,861.8	88.6	\$7,440	.9	\$2.98
Chicago Field Office	97.0	1.5	1,771,006	92.8	18,257.79
Idaho Field Office	31.8	.5	10,101	.5	317.64
Nevada Field Office	45.0	.7	25,621	1.3	569.36
Oak Ridge Field Office	81.0	1.2	5,682	.3	70.15
Pittsburgh Energy Technology Center	41.1	.6	3,031	.2	73.75
Richland Field Office	9.4	.1	2	0	.21
San Francisco Field Office	452.1	6.8	75,024	3.9	165.95
Total	6,619.2	100.0	\$1,907,907	100.0	\$288.24

LEASED LAND DATA - BY STATE

<i>Field Organization</i>	<i>Acres</i>	<i>% of Total</i>	<i>Annual Rent</i>	<i>% of Total</i>	<i>Annual Rent Per Acre</i>
California	453.1	6.8	\$76,044	4.0	\$167.83
Colorado	4.0	.1	7,200	.4	1,800.00
Florida	4.6	.1	0	0	0
Iowa	15.2	.2	4	0	.6
Indiana	5.0	.1	1	0	0
Montana	41.1	.6	3,031	.2	7.75
New Jersey	72.5	1.1	1,771,000	92.8	24,427.59
New Mexico	70.6	1.1	17,442	.9	247.05
Nevada	4.4	.1	23,160	1.2	5,263.64
Pennsylvania	9.0	.1	1	0	.11
Tennessee	81.0	1.2	5,682	.3	70.15
Texas	5,853.6	88.4	2,000	.1	.34
Utah	4.4	.1	1,441	.1	327.50
Washington	.4	0	1	0	2.50
Wyoming	.3	0	900	0	3,000.00
Total	6,619.2	100.0	\$1,907,907	100.0	\$288.24

BUILDINGS

BUILDINGS - DEFINITIONS

Type: The Department utilizes GSA's standard system of identifying types of facilities. A building is identified as a specific type depending on the majority usage of the facility. Thus, a storage facility may have offices or shop facilities, but will be identified as a storage building if the majority of space in it is used for storage

Acquisition Cost: The original cost of acquisition, entered into the records at the time of acquisition.

Improvement Cost: A cumulative record of costs incurred for improvements as they occur.

Gross Square Feet: The total floor area of a building in square feet from exterior wall to exterior wall.

Net Occupiable Square Feet: Gross square feet less common area such as bathrooms, stairways, elevator shafts, corridors, lobbies, equipment rooms, telephone closets, janitor rooms, pipe and vent shafts, and exterior walls.

Weighted Average Age: The weighted average age is computed based on the age of buildings weighted by the gross square feet of the buildings.

Replacement Value: The cost to replace an existing facility with a new facility of comparable size using current technology, codes, standards and materials. This is an estimated quantity based on assigning dollar values to the broad categories shown, but does not include the cost of land.

BUILDINGS - DEPARTMENTWIDE - BY TYPE OF USAGE

<i>Building Usage</i>	<i>Acquisition Cost</i>	<i>Improvement Cost</i>
Office	\$722,366,784	\$252,377,842
Post Office	146,750	0
Hospital	2,237,420	5,621,503
Medical Clinics	6,763,514	759,355
Examination and Testing Facilities	674,045	945,151
Other Medical or Hospital Facilities	176,304	33,552
Traditional Classroom Buildings	15,381,707	3,858,020
Specialized Training Buildings	5,703,878	161,999
Auditorium/Theater	1,219,293	229,764
Tech Transfer/Conference Buildings	755,224	629,139
Other School Buildings	3,607,182	1,175
Library	1,413,385	1,196,689

BUILDINGS - DEPARTMENTWIDE - BY TYPE OF USAGE (CONTINUED)

<i>Building Usage</i>	<i>Acquisition Cost</i>	<i>Improvement Cost</i>
Cafeteria	\$18,885,418	\$14,659,610
Visitors Center	1,744,045	649,097
Museums/Shrines/National Landmarks/Historic Buildings	2,664,240	438,651
Recreational Facility	857,301	765,208
Physical Fitness	233,017	0
Security Headquarters/Badge Issuance/Gate Houses	12,897,849	4,454,756
Computer Buildings	46,616,983	10,605,485
Other Institutional Buildings	28,608,693	2,721,975
Visitor Housing	17,953,023	2,423,945
Motel/Hotel/Lodges	309,000	0
All Other Housing	5,375,435	0
General Storage	237,009,352	89,259,278
Programmatic General Storage	48,712,956	12,899,898
Hazardous/Flammable Storage	14,941,637	2,900,620
Nuclear Contaminated Storage	28,239,522	13,476,204
Special Nuclear Material Storage	60,650,315	7,214,458
Secure Storage Facility	1,101,658	1,177,721
Temperature and Humidity Controlled Warehousing	1,108,592	4,900
Magazine (Ammunition Storage)	1,695,847	630
Magazine Igloo Staging Facility	49,900	0
Environmental Controlled Storage	1,349,432	3,701
Shed Storage	2,952,140	60,371
Production/Manufacturing Buildings	118,822,070	74,339,801
Production/Manufacturing Buildings (Nuclear)	1,219,749	5,346,039
Hazardous Production/Manufacturing Buildings	4,037,082	102,044
Production Reactors	161,258,608	18,471,336
Uranium Enrichment (Diffusion)	332,071,390	59,561,057
Fabrication Facility	104,836,962	174,855,449
Fabrication (Nuclear)	48,975,274	32,560,922
Assembly Facilities	54,247,016	55,251,736
Assembly (Nuclear)	5,910,200	281,278
Manufacturing/Production Related Laboratories	54,270,022	54,151,675
Demonstration Facility	4,607,643	2,393,749
Manufacturing Inspection Building	10,058,490	10,025,086

BUILDINGS - DEPARTMENTWIDE - BY TYPE OF USAGE (CONTINUED)

<i>Building Usage</i>	<i>Acquisition Cost</i>	<i>Improvement Cost</i>
Materials Handling or Processing Facilities	\$23,528,357	\$3,952,270
Nuclear Chemical Process Facilities	381,352,642	101,216,872
Nuclear Waste Processing and/or Handling Building	67,926,016	8,326,226
Other Industrial Facilities	25,115,914	20,844,310
Maintenance Shops, General	119,469,515	55,421,686
Paint Shops	2,334,316	1,351,669
Welding Shops	1,134,888	559,399
Pipe Fitting and Plumbing Shop	165,442	0
Carpentry Shops	788,312	456,100
Heating Ventilating and Air Conditioning Shops	5,583,240	0
Other Buildings Trades Shops	5,444,552	3,271,480
Machine Shops	74,138,125	153,435,885
Electronics Shops	3,729,420	484,059
Computer/Communications Repair Shops	329,324	0
Equipment Calibration Shops	1,102,495	1,812,251
Electrical/Motor Repair Shops	497,917	4,058
Vehicle Repair Shops	9,713,291	5,001,994
Heavy Equipment Repair Shops	1,838,371	156,743
Railroad Repair Shops	40,760	52,380
Change Houses	16,821,159	3,711,414
Guard Houses	62,217,108	11,539,023
Communications/Control Centers	52,966,245	8,708,072
Indoor Firing Ranges	200,160	0
Physical Fitness Facilities	323,978	4,146
Gas Stations	578,433	414,798
Banks and Credit Unions	33,392	8,193
Tool Cribs/Dispensing/Control	38,008	0
Work in Process/Ready Building	1,874,080	252,031
Quality Assurance Shops	455,725	3,095
Helicopter and Airplane Hangers	1,092,537	980,440
Airport Terminal Buildings	593,328	0
Other Air Service Buildings	128,814	0
Laundry	533,972	356,657
Laundry (Contaminated)	4,792,827	1,645,379

BUILDINGS - DEPARTMENTWIDE - BY TYPE OF USAGE (CONTINUED)

<i>Building Usage</i>	<i>Acquisition Cost</i>	<i>Improvement Cost</i>
Fire Station	\$19,138,758	\$6,501,282
Other Service Buildings	346,430,331	100,277,641
Metrology and Calibration Laboratory	191,869,453	198,665,369
Computation Laboratory	29,866,689	8,756,642
Applied Science Laboratory	25,724,241	18,138,661
Calibration Laboratory	5,434,489	5,495,343
Other Support Labs	27,868,380	3,627,207
Chemistry Laboratory (Non-Nuclear)	27,795,226	28,756,854
Chemical Laboratory (Nuclear)	119,345,961	41,583,202
Other Chemistry Laboratory	2,477,366	2,120,049
Physics Laboratories	85,007,972	14,913,901
Optics Laboratories	17,098,178	1,671,067
Applied Physics Laboratory	38,428,299	7,637,459
Nuclear Physics Laboratory	61,004,696	12,884,215
Other Physics Laboratory	5,810,385	2,886,122
Electrical/Electronics Laboratory	9,496,198	2,957,196
Communications Laboratory	7,538,224	0
Other Electrical/Electronics Laboratory	781,105	6,899
Biological Research Laboratory	14,708,622	50,368,885
Medical Research Laboratory	5,086,986	10,265,853
Human Factors Laboratory	1,050,924	0
Animal Research Facility	9,895,056	8,461,422
Animal House	1,191,572	42,035
Other Bio-Med Buildings	5,991,025	1,407,479
Materials Laboratory	41,728,222	33,016,692
Other Materials R&D Test Buildings	33,404,108	9,028,142
Environmental Laboratory	9,508,877	8,094,312
Radiation Effects Laboratory	1,991,863	683,891
Other Environmental R&D Test Buildings	3,945,555	671,274
Large Scale Demonstration/Research Building	36,463,278	46,122,352
Hot Cells	32,818,724	37,755,342
Research Reactor	350,759,793	37,982,545
Accelerator Building	196,413,244	93,328,801
Laboratories, General (Non-Nuclear)	54,903,740	30,384,847

BUILDINGS - DEPARTMENTWIDE - BY TYPE OF USAGE (CONTINUED)

<i>Building Usage</i>	<i>Acquisition Cost</i>	<i>Improvement Cost</i>
Laboratories, General (Nuclear)	\$55,217,525	\$21,394,436
Multifunction Research/Lab Building	95,904,153	149,266,864
Other	106,896,500	32,401,398
Total	\$5,140,594,728	\$2,328,397,178

BUILDINGS - DEPARTMENTWIDE - BY TYPE OF USAGE

<i>Building Usage</i>	<i>Gross Square Feet</i>	<i>Net Occupiable Square Feet</i>	<i>Number of Buildings</i>	<i>Weighted Average Age</i>
Office	16,866,501	12,617,428	3,061	26
Post Office	5,700	5,184	1	28
Hospital	91,227	70,247	10	41
Medical Clinics	91,227	70,247	10	9
Examination and Testing Facilities	21,125	15,726	4	31
Other Medical or Hospital Facilities	4,118	3,416	4	14
Traditional Classroom Buildings	305,621	262,209	45	18
Specialized Training Buildings	83,476	67,997	15	15
Auditorium/Theater	31,693	21,234	6	27
Tech Transfer/Conference Buildings	15,609	13,942	4	7
Other School Buildings	33,885	26,669	7	3
Library	83,887	63,752	7	41
Cafeteria	589,283	476,383	50	33
Visitors Center	35,242	24,973	17	19
Museums/Shrines/National Landmarks/Historic Buildings	59,984	29,425	3	42
Recreational Facility	76,135	51,384	12	41
Physical Fitness	10,800	9,836	3	7
Security Headquarters/Badge Issuance/Gate Houses	154,426	108,050	26	18
Computer Buildings	574,163	491,228	42	18
Other Institutional Buildings	450,298	404,650	49	20
Visitor Housing	602,665	500,278	232	34
Motel/Hotel/Lodges	33,186	29,920	11	65
All Other Housing	105,167	86,597	44	19

BUILDINGS - DEPARTMENTWIDE - BY TYPE OF USAGE (CONTINUED)

<i>Building Usage</i>	<i>Gross Square Feet</i>	<i>Net Occupiable Square Feet</i>	<i>Number of Buildings</i>	<i>Weighted Average Age</i>
General Storage	8,126,534	7,129,640	1,775	31
Programmatic General Storage	1,166,820	981,317	292	25
Hazardous/Flammable Storage	370,438	324,271	156	23
Nuclear Contaminated Storage	867,497	712,788	55	34
Special Nuclear Material Storage	187,687	156,612	12	14
Secure Storage Facility	28,598	24,452	12	35
Temperature and Humidity Controlled Warehousing	21,653	14,902	10	6
Magazine (Ammunition Storage)	36,668	29,118	97	32
Magazine Igloo Staging Facility	685	543	2	21
Environmental Controlled Storage	46,135	44,667	10	6
Shed Storage	77,253	72,444	32	13
Production/Manufacturing Buildings	2,071,537	1,608,050	146	25
Production/Manufacturing Buildings (Nuclear)	38,669	30,521	11	37
Hazardous Production/Manufacturing Buildings	35,754	25,976	5	18
Production Reactors	1,173,575	779,241	19	36
Uranium Enrichment (Diffusion)	24,682,004	22,523,820	93	40
Fabrication Facility	4,276,986	3,561,900	78	41
Fabrication (Nuclear)	566,809	337,600	5	34
Assembly Facilities	1,238,022	931,883	54	26
Assembly (Nuclear)	224,570	182,765	13	6
Manufacturing/Production Related Laboratories	1,168,335	911,631	75	35
Demonstration Facility	60,832	49,126	4	27
Manufacturing Inspection Building	278,003	203,068	39	32
Materials Handling or Processing Facilities	358,511	273,694	29	30
Nuclear Chemical Process Facilities	2,715,399	1,640,426	123	28
Nuclear Waste Processing and/or Handling Building	279,166	221,002	29	23
Other Industrial Facilities	686,270	479,615	42	42
Maintenance Shops, General	4,141,404	3,565,732	302	35
Paint Shops	57,184	50,138	18	20
Welding Shops	41,564	35,682	14	33
Pipe Fitting and Plumbing Shop	11,870	11,279	5	15
Carpentry Shops	39,740	33,316	11	37
Heating Ventilating and Air Conditioning Shops	41,570	41,156	7	8

BUILDINGS - DEPARTMENTWIDE - BY TYPE OF USAGE (CONTINUED)

<i>Building Usage</i>	<i>Gross Square Feet</i>	<i>Net Occupiable Square Feet</i>	<i>Number of Buildings</i>	<i>Weighted Average Age</i>
Other Buildings Trades Shops	207,650	175,536	30	31
Machine Shops	2,855,449	2,198,938	108	37
Electronics Shops	106,804	87,032	26	21
Computer/Communications Repair Shops	8,471	6,056	4	14
Equipment Calibration Shops	39,486	32,434	8	33
Electrical/Motor Repair Shops	5,475	5,121	3	6
Vehicle Repair Shops	384,027	336,947	52	32
Heavy Equipment Repair Shops	32,556	30,598	4	10
Railroad Repair Shops	1,239	1,094	1	38
Change Houses	416,285	353,033	131	31
Guard Houses	423,593	357,026	389	20
Communications/Control Centers	662,710	581,270	561	21
Indoor Firing Ranges	1,994	1,948	4	2
Physical Fitness Facilities	11,165	10,073	6	27
Gas Stations	28,025	23,982	8	38
Banks and Credit Unions	3,764	2,464	2	50
Tool Cribs/Dispensing/Control	6,372	5,793	5	25
Work in Process/Ready Building	48,751	42,220	7	31
Quality Assurance Shops	4,641	3,756	5	13
Helicopter and Airplane Hangers	4,473	5,991	2	6
Airport Terminal Buildings	5,666	4,837	2	11
Other Air Service Buildings	4,550	4,095	1	7
Laundry	21,608	14,288	6	44
Laundry (Contaminated)	107,833	83,125	13	29
Fire Station	333,350	270,511	69	25
Other Service Buildings	4,658,034	3,868,051	2,097	31
Metrology and Calibration Laboratory	5,158,769	3,690,680	429	33
Computation Laboratory	833,549	673,595	31	31
Applied Science Laboratory	533,642	399,080	26	29
Calibration Laboratory	163,543	122,743	27	28
Other Support Labs	458,998	399,392	98	16
Chemistry Laboratory (Non-Nuclear)	735,389	436,522	31	36
Chemical Laboratory (Nuclear)	1,142,912	807,652	27	30

BUILDINGS - DEPARTMENTWIDE - BY TYPE OF USAGE (CONTINUED)

<i>Building Usage</i>	<i>Gross Square Feet</i>	<i>Net Occupiable Square Feet</i>	<i>Number of Buildings</i>	<i>Weighted Average Age</i>
Other Chemistry Laboratory	97,791	75,806	12	32
Physics Laboratories	1,008,602	788,290	74	22
Optics Laboratories	209,770	192,805	14	20
Applied Physics Laboratory	557,932	451,791	35	20
Nuclear Physics Laboratory	1,055,935	942,881	19	34
Other Physics Laboratory	193,727	159,772	43	23
Electrical/Electronics Laboratory	280,883	220,755	32	27
Communications Laboratory	112,528	100,631	3	3
Other Electrical/Electronics Laboratory	11,046	8,849	7	28
Biological Research Laboratory	788,475	493,850	24	37
Medical Research Laboratory	241,418	128,881	3	35
Human Factors Laboratory	6,268	5,836	1	5
Animal Research Facility	219,191	144,209	24	22
Animal House	21,402	19,671	18	20
Other Bio-Med Buildings	87,909	80,831	20	22
Materials Laboratory	626,797	410,622	20	24
Other Materials R&D Test Buildings	416,979	307,942	90	24
Environmental Laboratory	217,563	162,964	45	30
Radiation Effects Laboratory	74,960	59,766	5	31
Other Environmental R&D Test Buildings	173,024	154,497	24	16
Large Scale Demonstration/Research Building	647,902	398,393	27	15
Hot Cells	481,928	334,693	18	33
Research Reactor	1,410,925	974,226	59	28
Accelerator Building	3,675,673	2,872,526	216	26
Laboratories, General (Non-Nuclear)	1,112,481	839,354	49	24
Laboratories, General (Nuclear)	1,040,316	770,843	48	28
Multifunction Research/Lab Building	3,443,803	2,150,096	45	31
Other	2,392,286	2,017,823	481	35
Total	115,440,574	92,712,228	12,904	32

BUILDINGS - DEPARTMENTWIDE - BY TYPE OF USAGE

<i>Building Usage</i>	<i>Gross Square Feet Owned</i>	<i>Gross Square Feet Leased</i>	<i>Leased Annual Rental Cost</i>
Office	16,866,501	4,147,289	\$40,390,801
Post Office	5,700	0	0
Hospital	91,227	4,465	70,533
Medical Clinics	91,227	0	0
Examination and Testing Facilities	21,125	0	0
Other Medical or Hospital Facilities	4,118	0	0
Traditional Classroom Buildings	305,621	64,833	673,774
Specialized Training Buildings	83,476	32,318	222,927
Auditorium/Theater	31,693	0	0
Tech Transfer/Conference Buildings	15,609	0	0
Other School Buildings	33,885	6,080	30,000
Library	83,887	0	0
Cafeteria	589,283	4,239	67,157
Visitors Center	35,242	21,349	176,400
Museums/Shrines/National Landmarks/Historic Buildings	59,984	0	0
Recreational Facility	76,135	0	0
Physical Fitness	10,800	0	0
Security Headquarters/Badge Issuance/Gate Houses	154,426	0	0
Computer Buildings	574,163	9,367	196,523
Other Institutional Buildings	450,298	21,155	418,346
Visitor Housing	602,665	8,640	102,000
Motel/Hotel/Lodges	33,186	0	0
All Other Housing	105,167	0	0
General Storage	8,126,534	622,588	2,318,220
Programmatic General Storage	1,166,820	22,716	123,687
Hazardous/Flammable Storage	370,438	0	0
Nuclear Contaminated Storage	867,497	0	0
Special Nuclear Material Storage	187,687	0	0
Secure Storage Facility	28,598	0	0
Temperature and Humidity Controlled Warehousing	21,653	0	0
Magazine (Ammunition Storage)	36,668	0	0
Magazine Igloo Staging Facility	685	0	0
Environmental Controlled Storage	46,135	0	0

BUILDINGS - DEPARTMENTWIDE - BY TYPE OF USAGE (CONTINUED)

<i>Building Usage</i>	<i>Gross Square Feet Owned</i>	<i>Gross Square Feet Leased</i>	<i>Leased Annual Rental Cost</i>
Shed Storage	77,253	0	\$0
Production/Manufacturing Buildings	2,071,537	0	0
Production/Manufacturing Buildings (Nuclear)	38,669	0	0
Hazardous Production/Manufacturing Buildings	35,754	0	0
Production Reactors	1,173,575	0	0
Uranium Enrichment (Diffusion)	24,682,004	0	0
Fabrication Facility	4,276,986	56,508	209,998
Fabrication (Nuclear)	566,809	0	0
Assembly Facilities	1,238,022	0	0
Assembly (Nuclear)	224,570	0	0
Manufacturing/Production Related Laboratories	1,168,335	0	0
Demonstration Facility	60,832	0	0
Manufacturing Inspection Building	278,003	0	0
Materials Handling or Processing Facilities	358,511	0	0
Nuclear Chemical Process Facilities	2,715,399	0	0
Nuclear Waste Processing and/or Handling Building	279,166	0	0
Other Industrial Facilities	686,270	27,591	0
Maintenance Shops, General	4,141,404	6,832	53,495
Paint Shops	57,184	0	0
Welding Shops	41,564	0	0
Pipe Fitting and Plumbing Shop	11,870	0	0
Carpentry Shops	39,740	0	0
Heating Ventilating and Air Conditioning Shops	41,570	0	0
Other Buildings Trades Shops	207,650	0	0
Machine Shops	2,855,449	0	0
Electronics Shops	106,804	0	0
Computer/Communications Repair Shops	8,471	864	75,768
Equipment Calibration Shops	39,486	0	0
Electrical/Motor Repair Shops	5,475	0	0
Vehicle Repair Shops	384,027	3,500	128,400
Heavy Equipment Repair Shops	32,556	0	0
Railroad Repair Shops	1,239	0	0
Change Houses	416,285	0	0

BUILDINGS - DEPARTMENTWIDE - BY TYPE OF USAGE (CONTINUED)

<i>Building Usage</i>	<i>Gross Square Feet Owned</i>	<i>Gross Square Feet Leased</i>	<i>Leased Annual Rental Cost</i>
Guard Houses	423,593	0	\$0
Communications/Control Centers	662,710	0	0
Indoor Firing Ranges	1,994	0	0
Physical Fitness Facilities	11,165	0	0
Gas Stations	28,025	0	0
Banks and Credit Unions	3,764	0	0
Tool Cribs/Dispensing/Control	6,372	0	0
Work in Process/Ready Building	48,751	600	13,435
Quality Assurance Shops	4,641	0	0
Helicopter and Airplane Hangers	14,473	23,043	246,096
Airport Terminal Buildings	5,666	0	0
Other Air Service Buildings	4,550	0	0
Laundry	21,608	0	0
Laundry (Contaminated)	107,833	0	0
Fire Station	333,350	0	0
Other Service Buildings	4,658,034	22,358	88,462
Metrology and Calibration Laboratory	5,158,769	161,966	8,503,150
Computation Laboratory	832,549	0	0
Applied Science Laboratory	533,642	0	0
Calibration Laboratory	163,543	0	0
Other Support Labs	458,998	675	4,440
Chemistry Laboratory (Non-Nuclear)	735,389	0	0
Chemical Laboratory (Nuclear)	1,142,912	0	0
Other Chemistry Laboratory	97,791	0	0
Physics Laboratories	1,008,602	0	0
Optics Laboratories	209,770	0	0
Applied Physics Laboratory	557,932	0	0
Nuclear Physics Laboratory	1,055,935	0	0
Other Physics Laboratory	193,727	0	0
Electrical/Electronics Laboratory	280,883	2,202	140,334
Communications Laboratory	112,528	0	0
Other Electrical/Electronics Laboratory	11,046	0	0
Biological Research Laboratory	788,475	0	0

BUILDINGS - DEPARTMENTWIDE - BY TYPE OF USAGE (CONTINUED)

<i>Building Usage</i>	<i>Gross Square Feet Owned</i>	<i>Gross Square Feet Leased</i>	<i>Leased Annual Rental Cost</i>
Medical Research Laboratory	241,418	0	\$0
Human Factors Laboratory	6,268	0	0
Animal Research Facility	219,191	0	0
Animal House	21,482	0	0
Other Bio-Med Buildings	87,909	0	0
Materials Laboratory	626,797	0	0
Other Materials R&D Test Buildings	416,979	64,428	351,151
Environmental Laboratory	217,563	0	0
Radiation Effects Laboratory	74,960	0	0
Other Environmental R&D Test Buildings	173,024	0	0
Large Scale Demonstration/Research Building	647,902	0	0
Hot Cells	481,928	0	0
Research Reactor	1,410,925	0	0
Accelerator Building	3,675,673	6,630	77,864
Laboratories, General (Non-Nuclear)	1,112,481	0	0
Laboratories, General (Nuclear)	1,040,316	0	0
Multifunction Research/Lab Building	3,443,803	86,285	1,449,717
Other	2,392,286	101,235	165,561
Total	115,440,574	5,529,756	\$56,298,241

BUILDINGS - DEPARTMENTWIDE - LEASED - BY FIELD ORGANIZATION

<i>Field Organization</i>	<i>Gross Square Feet</i>	<i>% of Total</i>	<i>Gross Annual Rent</i>	<i>% of Total</i>	<i>Annual Rent Per Square Foot</i>
Albuquerque Field Office	397,983	7.2	\$3,408,921	6.1	\$8.57
Chicago Field Office	425,404	7.7	5,197,532	9.2	1.22
Idaho Field Office	380,950	6.9	1,486,054	2.6	3.90
Morgantown Energy Technology Center	3,800	.1	55,252	.1	14.54
Nevada Field Office	746,279	13.5	6,788,155	12.1	9.10

BUILDINGS - DEPARTMENTWIDE - LEASED - BY FIELD ORGANIZATION (CONTINUED)

<i>Field Organization</i>	<i>Gross Square Feet</i>	<i>% of Total</i>	<i>Gross Annual Rent</i>	<i>% of Total</i>	<i>Annual Rent Per Square Foot</i>
Oak Ridge Field Office	870,457	15.7	\$10,547,649	18.7	\$12.12
Pittsburgh Energy Technology Center	2,256	0	0	0	0
Richland Field Office	876,392	15.8	9,767,427	17.3	11.15
Rocky Flats Office	229,952	4.2	1,102,234	2.0	4.79
San Francisco Field Office	528,683	9.6	12,494,106	22.2	23.63
Strategic Petroleum Reserve Project Office	453,283	8.2	1,987,944	3.5	4.39
Superconducting Super Collider Project Office	608,110	11.0	3,462,968	6.2	5.69
Western Area Power Administration.	6,207	.1	0	0	0
Total	5,529,756	100.0	\$56,298,241	100.0	\$10.18

BUILDINGS - DEPARTMENTWIDE - LEASED BY STATE

<i>State</i>	<i>Gross Square Feet</i>	<i>% of Total</i>	<i>Gross Annual Rent</i>	<i>% of Total</i>	<i>Annual Rent Per Square Foot</i>
California	758,473	13.7	\$9,246,524	35.6	\$25.38
Colorado	536,701	9.7	5,014,607	9.3	9.34
District of Columbia	400,000	7.2	65,251	.1	.16
Florida	70,374	1.3	255,274	.5	3.63
Idaho	380,950	6.9	1,486,054	2.7	3.90
Illinois	118,655	2.1	1,285,159	2.4	10.83
Kentucky	14,960	.3	317,064	.6	21.19
Louisiana	453,283	8.2	1,987,944	3.7	4.39
Massachusetts	13,875	.3	131,813	.2	9.50
Maryland	23,866	.4	47,468	.1	1.99
Montana	6,207	.1	0	0	0
New Mexico	274,004	5.0	3,672,443	4.8	9.39
Nevada	290,901	5.3	3,041,084	3.5	6.50
Ohio	32,456	.6	401,811	.7	12.38
Oregon	4,204	.1	42,502	.1	10.11

BUILDINGS - DEPARTMENTWIDE - LEASED BY STATE (CONTINUED)

<i>State</i>	<i>Gross Square Feet</i>	<i>% of Total</i>	<i>Gross Annual Rent</i>	<i>% of Total</i>	<i>Annual Rent Per Square Foot</i>
Pennsylvania	2,256	0	\$0	0	\$0
Tennessee	419,779	7.6	6,224,985	11.5	14.83
Texas	608,110	11.0	3,462,968	6.4	5.69
Washington	832,498	15.1	9,560,039	17.7	11.48
Wyoming	3,800	.1	55,252	.1	14.54
Other	284,404	5.1	0	0	0
Total	5,529,756	100.0	\$56,298,241	100.0	\$10.18

BUILDINGS - DEPARTMENTWIDE - BY TYPE OF CONSTRUCTION

<i>Type of Construction</i>	<i>Gross Square Feet</i>	<i>Acquisition Cost</i>
Temporary	394,169	\$18,020,757
Prefabricated/Modular	3,389,952	222,675,143
Timber	284,535	3,850,692
Steel Framed	47,789,112	1,728,381,266
Masonry Exterior Walls	31,077,510	1,093,381,992
Reinforced Concrete	23,180,623	1,771,404,402
Earth	468	13,509
Gravel	1,080	132,112
Trailer (Personal Property)	2,564,125	66,699,871
Wood Frame, Siding, Asphalt Roof	4,109,919	70,439,518
Quonset	123,049	1,630,443
Unfinished Shell	367,006	12,333,307
Other Permanent Construction	1,789,258	130,362,320
Underground Transmission (Electric)	252	5,034
Steel Piping	16,910	2,045,773
Other	317,706	17,350,172
No Description for Construction Type	34,900	1,868,417
Total	115,440,574	\$5,140,594,728

BUILDINGS - DEPARTMENTWIDE - BY INSTALLATION

<i>Installation</i>	<i>Number of Buildings</i>	<i>Gross Square Feet</i>
Ames Laboratory	9	277,478
Argonne National Laboratory - East	119	3,641,563
Argonne National Laboratory - West	47	498,850
Bates Linear Accelerator Center	9	156,790
Brookhaven National Laboratory	354	3,744,344
Energy Technology Engineering Center - 701	20	50,619
Energy Technology Engineering Center - 700	57	280,883
Fermi National Accelerator Laboratory	315	1,994,627
Fernald Environmental Management Field Office	152	1,581,672
Hanford Site - Kaiser	31	190,502
Hanford Site - Westinghouse	987	6,424,391
Idaho Field Office	531	3,522,016
Inhalation Toxicology Research Institute	66	256,873
Kansas City Plant	40	3,202,489
Laboratory of Radiobiology & Environmental Health	1	22,000
Lawrence Berkeley Laboratory	130	1,519,491
Lawrence Livermore National Laboratory	645	5,232,364
Lawrence Livermore National Laboratory - 300 Area	127	340,293
Los Alamos National Laboratory	1,586	7,589,616
Morgantown Energy Technology Center	59	346,813
Mound Plant	125	1,362,076
Naval Petroleum & Oil Shale Reserve in CO, UT & WY	164	70,317
Naval Petroleum Reserve in CA	594	319,000
Nevada - EG & G	27	709,589
Nevada - REECO	1,143	2,616,463
Oak Ridge Associated Universities	39	275,194
Oak Ridge Field Office	11	157,560
Oak Ridge Gaseous Diffusion Plant	340	12,108,441
Oak Ridge National Laboratory	321	3,010,859
Oak Ridge Y-12 Plant	448	7,039,624
Pacific Northwest Laboratory	121	966,926
Paducah Gaseous Diffusion Plant	134	8,190,518
Pantex Plant	252	1,982,080
Pinellas Plant	17	729,395

BUILDINGS - DEPARTMENTWIDE - BY INSTALLATION (CONTINUED)

<i>Installation</i>	<i>Number of Buildings</i>	<i>Gross Square Feet</i>
Pittsburgh Energy Technology Center	44	405,602
Portsmouth Gaseous Diffusion Plant	118	10,536,749
Princeton Plasma Physics Laboratory	33	707,529
Rocky Flats Plant	228	3,504,972
Sandia National Laboratory - Albuquerque	711	4,118,591
Sandia National Laboratory - Livermore	70	657,526
Sandia National Laboratory - Tonopah	57	113,310
Savannah River Plant	1,064	6,232,129
Stanford Linear Accelerator Center	137	1,607,281
Strategic Petroleum Reserve Project Office	156	299,744
Superconducting Super Collider Project Office	4	137,411
Other	1,493	10,350,397
Total	12,904	115,440,574

BUILDINGS - DEPARTMENTWIDE - BY FIELD ORGANIZATION

<i>Field Organization</i>	<i>Gross Square Feet</i>
Albuquerque Field Office	20,675,019
Chicago Field Office	11,235,844
Idaho Field Office	3,522,017
Morgantown Energy Technology Center	346,813
Naval Petroleum Reserves in California	398,495
Nevada Field Office	3,387,525
Oak Ridge Field Office	44,016,289
Pittsburgh Energy Technology Center	727,266
Pittsburgh Naval Reactors Office	1,531,397
Richland Field Office	7,666,619
Rocky Flats Office	3,509,552
San Francisco Field Office	9,172,529

BUILDINGS - DEPARTMENTWIDE - BY FIELD ORGANIZATION (CONTINUED)

<i>Field Organization</i>	<i>Gross Square Feet</i>
Savannah River Field Office	6,232,129
Schenectady Naval Reactors Office	1,287,531
Southwestern Power Administration	45,983
Strategic Petroleum Reserve Project Office	299,744
Superconducting Super Collider Project Office	137,411
Western Area Power Administration	1,248,411
Total	115,440,574

BUILDINGS - DEPARTMENTWIDE - BY SPONSORING HEADQUARTERS ORGANIZATION AND PROGRAM

<i>Sponsoring Headquarters Organization and Program</i>	<i>Gross Square Feet</i>
Administration and Management	
Technical Information Management Program	132,000
Civilian Radioactive Waste Management	
Civilian Radioactive Waste Research and Development	3,233
Nuclear Waste Disposal Act	261,929
Nuclear Waste Fund	90,666
Conservation and Renewable Energy	
Buildings & Community Systems	50,337
Building Sector	28,993
Electric Energy Systems	230,798
Energy Storage Systems	42,400
Geothermal Energy	6,060
Multi-sector	83,469
Solar	12,060
Solar Energy	134,171
Southwestern Area Power Administration	45,983
Transportation	84,158
Western Area Power Administration	1,248,411
Defense Programs	
Materials Production	9,322,732

BUILDINGS - DEPARTMENTWIDE - BY SPONSORING HEADQUARTERS
ORGANIZATION AND PROGRAM (CONTINUED)

<i>Sponsoring Headquarters Organization and Program</i>	<i>Gross Square Feet</i>
Nuclear Safeguards and Security	30,642
Verification and Control Technology	93,033
Weapons Activities	29,944,525
Economic Regulatory Administration	
Utility Programs	1,850
Emergency Planning and Operations	
Building & Community Systems (Emergency)	1,500
Environmental Safety and Health	
Environmental Reserach and Development	257,550
Epidemiologic Activities	5,340
Policy and Management (ES&H)	13,403
Environmental Restoration and Waste Management	
Environmental Restoration and Waste Management - Defense	6,530,541
Environmental Restoration and Waste Management - Non-defense	15,946,921
Energy Research	
Advisory and Oversight Program Direction	32,120
Basic Energy Sciences	3,701,252
Biological and Environmental Research	1,852,882
Energy Research Analysis	88,699
High Energy Physics	6,341,826
Magnetic Fusion	1,869,361
Nuclear Physics	1,228,648
Superconducting Super Collider	346,235
University Research Support	3,413
Fossil Energy	
Coal	281,980
Energy Technology Center Program Administration	405,952
Fossil Energy Program Administration	417,602
Naval Petroleum and Oil Shale Reserves	398,495
Petroleum	79,579
Strategic Petroleum Reserve	299,744
Intelligence	
Intelligence	59,224

**BUILDINGS - DEPARTMENTWIDE - BY SPONSORING HEADQUARTERS
ORGANIZATION AND PROGRAM (CONTINUED)**

<i>Sponsoring Headquarters Organization and Program</i>	<i>Gross Square Feet</i>
Nuclear Energy	
Naval Reactors	3,032,481
Nuclear Energy Research and Development	1,961,838
Uranium Enrichment	19,345,701
New Production Reactors	
New Production Reactors	28,897
Work for Others	1,508,666
Other	7,553,274
Total	115,440,574

BUILDINGS - BY FIELD ORGANIZATION - ALBUQUERQUE

<i>Building Usage</i>	<i>Gross Square Feet</i>
Office	4,211,040
Hospital	13,000
Medical Clinics	9,984
Examination and Testing Facilities	14,071
Other Medical or Hospital Facilities	1,680
Traditional Classroom Buildings	28,150
Specialized Training Buildings	1,455
Auditorium/Theater	5,110
Tech Transfer/Conference Buildings	8,237
Other School Buildings	12,792
Library	34,633
Cafeteria	43,248
Visitors Center	8,865
Recreational Facility	1,552
Security Headquarters/Badge Issuance/Gate Houses	23,011
Computer Buildings	201,899
Other Institutional Buildings	300,827
Visitor Housing	28,704

BUILDINGS - BY FIELD ORGANIZATION - ALBUQUERQUE (CONTINUED)

<i>Building Usage</i>	<i>Gross Square Feet</i>
General Storage	1,296,598
Programmatic General Storage	275,575
Hazardous/Flammable Storage	77,705
Nuclear Contaminated Storage	5,800
Special Nuclear Material Storage	44,310
Secure Storage Facility	14,703
Temperature and Humidity Controlled Warehousing	748
Magazine (Ammunition Storage)	29,143
Magazine Igloo Staging Facility	685
Environmental Controlled Storage	42,555
Shed Storage	6,522
Production/Manufacturing Buildings	522,429
Hazardous Production/Manufacturing Buildings	35,754
Uranium Enrichment (Diffusion)	16,373
Fabrication Facility	2,930,017
Fabrication (Nuclear)	172,963
Assembly Facilities	296,809
Assembly (Nuclear)	219,636
Manufacturing/Production Related Laboratories	186,814
Demonstration Facility	7,550
Manufacturing Inspection Building	234,074
Materials Handling or Processing Facilities	212,934
Nuclear Chemical Process Facilities	147,032
Nuclear Waste Processing and/or Handling Building	4,909
Other Industrial Facilities	1,932
Maintenance Shops, General	582,573
Paint Shops	7,810
Welding Shops	1,068
Carpentry Shops	2,405
Other Buildings Trades Shops	48,989
Machine Shops	438,484
Electronics Shops	31,630
Computer/Communications Repair Shops	2,620
Electrical/Motor Repair Shops	1,555

BUILDINGS - BY FIELD ORGANIZATION - ALBUQUERQUE (CONTINUED)

<i>Building Usage</i>	<i>Gross Square Feet</i>
Vehicle Repair Shops	42,160
Change Houses	143,951
Guard Houses	131,217
Communications/Control Centers	49,544
Indoor Firing Ranges	512
Gas Stations	6,330
Work in Process/Ready Building	6,862
Airport Terminal Buildings	2,731
Other Air Service Buildings	4,550
Laundry	17,334
Laundry (Contaminated)	3,400
Fire Station	66,623
Other Service Buildings	579,932
Metrology and Calibration Laboratory	1,672,637
Computation Laboratory	486,924
Applied Science Laboratory	196,884
Calibration Laboratory	42,446
Other Support Labs	145,773
Chemistry Laboratory (Non-Nuclear)	128,259
Chemical Laboratory (Nuclear)	384,641
Other Chemistry Laboratory	6,146
Physics Laboratories	53,735
Optics Laboratories	167,592
Applied Physics Laboratory	30,685
Nuclear Physics Laboratory	684,898
Other Physics Laboratory	53,408
Electrical/Electronics Laboratory	66,885
Communications Laboratory	112,528
Other Electrical/Electronics Laboratory	1,231
Biological Research Laboratory	94,387
Animal Research Facility	73,705
Animal House	250
Other Bio-Med Buildings	87,904
Materials Laboratory	880

BUILDINGS - BY FIELD ORGANIZATION - ALBUQUERQUE (CONTINUED)

<i>Building Usage</i>	<i>Gross Square Feet</i>
Other Materials R&D Test Buildings	94,674
Environmental Laboratory	9,134
Radiation Effects Laboratory	1,048
Other Environmental R&D Test Buildings	143,443
Hot Cells	44,688
Research Reactor	16,100
Accelerator Building	562,005
Laboratories, General (Non-Nuclear)	579,823
Laboratories, General (Nuclear)	299,308
Multifunction Research/Lab Building	233,952
Other	294,938
Total	20,675,019

BUILDINGS - BY FIELD ORGANIZATION - CHICAGO

<i>Building Usage</i>	<i>Gross Square Feet</i>
Office	2,096,048
Medical Clinics	7,694
Traditional Classroom Buildings	4,488
Tech Transfer/Conference Buildings	4,700
Other School Buildings	15,819
Library	22,200
Cafeteria	88,849
Visitors Center	3,200
Museums/Shrines/National Landmarks/Historic Buildings	34,700
Recreational Facility	56,896
Physical Fitness	7,200
Security Headquarters/Badge Issuance/Gate Houses	13,827
Computer Buildings	160,872

BUILDINGS - BY FIELD ORGANIZATION - CHICAGO (CONTINUED)

<i>Building Usage</i>	<i>Gross Square Feet</i>
Other Institutional Buildings	22,300
Visitor Housing	340,249
Motel/Hotel/Lodges	33,186
General Storage	624,606
Programmatic General Storage	238,472
Hazardous/Flammable Storage	34,580
Nuclear Contaminated Storage	10,014
Special Nuclear Material Storage	2,700
Production/Manufacturing Buildings	10,950
Fabrication Facility	10,429
Assembly Facilities	186,078
Manufacturing/Production Related Laboratories	109,163
Materials Handling or Processing Facilities	13,715
Nuclear Chemical Process Facilities	7,100
Nuclear Waste Processing and/or Handling Building	7,189
Other Industrial Facilities	7,547
Maintenance Shops, General	152,296
Paint Shops	1,300
Welding Shops	20,319
Carpentry Shops	16,300
Other Buildings Trades Shops	54,109
Machine Shops	126,631
Electronics Shops	30,456
Computer/Communications Repair Shops	4,003
Equipment Calibration Shops	8,437
Vehicle Repair Shops	28,834
Heavy Equipment Repair Shops	5,850
Change Houses	1,103
Guard Houses	7,729
Communications/Control Centers	12,387
Physical Fitness Facilities	3,729
Gas Stations	2,400
Banks and Credit Unions	2,900
Laundry	3,200

BUILDINGS - BY FIELD ORGANIZATION - CHICAGO (CONTINUED)

<i>Building Usage</i>	<i>Gross Square Feet</i>
Laundry (Contaminated)	12,600
Fire Station	31,305
Other Service Buildings	199,309
Metrology and Calibration Laboratory	53,803
Computation Laboratory	3,875
Applied Science Laboratory	36,400
Calibration Laboratory	86,204
Other Support Labs	74,968
Chemistry Laboratory (Non-Nuclear)	363,569
Chemical Laboratory (Nuclear)	143,600
Other Chemistry Laboratory	2,449
Physics Laboratories	303,822
Optics Laboratories	3,994
Applied Physics Laboratory	339,942
Nuclear Physics Laboratory	222,500
Other Physics Laboratory	57,739
Electrical/Electronics Laboratory	18,484
Biological Research Laboratory	333,948
Medical Research Laboratory	222,100
Materials Laboratory	95,931
Other Materials R&D Test Buildings	1,900
Environmental Laboratory	23,186
Radiation Effects Laboratory	70,275
Other Environmental R&D Test Buildings	20,050
Large Scale Demonstration/Research Building	21,950
Hot Cells	157,397
Research Reactor	266,228
Accelerator Building	1,367,052
Laboratories, General (Non-Nuclear)	391,699
Laboratories, General (Nuclear)	198,067
Multifunction Research/Lab Building	1,341,960
Other	112,784
Total	11,235,844

BUILDINGS - BY FIELD ORGANIZATION - IDAHO

<i>Building Usage</i>	<i>Gross Square Feet</i>
Office	552,146
Medical Clinics	15,005
Other Medical or Hospital Facilities	740
Traditional Classroom Buildings	13,240
Specialized Training Buildings	33,099
Cafeteria	32,009
Visitors Center	254
Museums/Shrines/National Landmarks/Historic Buildings	23,700
Recreational Facility	5,454
Security Headquarters/Badge Issuance/Gate Houses	56,330
Computer Buildings	46,754
Other Institutional Buildings	1,271
Visitor Housing	600
All Other Housing	2,942
General Storage	398,013
Programmatic General Storage	63,281
Hazardous/Flammable Storage	13,155
Nuclear Contaminated Storage	111,554
Special Nuclear Material Storage	37,964
Temperature and Humidity Controlled Warehousing	15,000
Magazine (Ammunition Storage)	266
Assembly Facilities	219,374
Demonstration Facility	53,282
Materials Handling or Processing Facilities	8,193
Nuclear Chemical Process Facilities	213,640
Nuclear Waste Processing and/or Handling Building	154,775
Other Industrial Facilities	27,975
Maintenance Shops, General	123,089
Paint Shops	16,130
Welding Shops	2,500
Carpentry Shops	7,264
Other Buildings Trades Shops	2,500
Machine Shops	75,560
Equipment Calibration Shops	8,355

BUILDINGS - BY FIELD ORGANIZATION - IDAHO (CONTINUED)

<i>Building Usage</i>	<i>Gross Square Feet</i>
Vehicle Repair Shops	28,048
Heavy Equipment Repair Shops	13,926
Change Houses	1,956
Guard Houses	21,779
Communications/Control Centers	5,774
Gas Stations	16,685
Work in Process/Ready Building	22,046
Quality Assurance Shops	3,360
Helicopter and Airplane Hangers	8,459
Laundry (Contaminated)	11,494
Fire Station	21,744
Other Service Buildings	315,697
Metrology and Calibration Laboratory	92,967
Applied Science Laboratory	150,023
Other Support Labs	1,188
Chemical Laboratory (Nuclear)	82,005
Physics Laboratories	7,773
Electrical/Electronics Laboratory	3,878
Materials Laboratory	4,418
Other Materials R&D Test Buildings	10,532
Environmental Laboratory	22,498
Other Environmental R&D Test Buildings	912
Hot Cells	20,333
Research Reactor	309,698
Laboratories, General (Non-Nuclear)	2,900
Laboratories, General (Nuclear)	2,365
Multifunction Research/Lab Building	975
Other	2,170
Total	3,522,017

BUILDINGS - BY FIELD ORGANIZATION - MORGANTOWN ENERGY TECHNOLOGY CENTER

<i>Building Usage</i>	<i>Gross Square Feet</i>
Office	155,493
Other Medical or Hospital Facilities	1,410
Other School Buildings	4,794
Computer Buildings	14,824
General Storage	53,067
Hazardous/Flammable Storage	5,119
Materials Handling or Processing Facilities	6,440
Vehicle Repair Shops	3,378
Communications/Control Centers	1,040
Other Service Buildings	7,777
Computation Laboratory	1,200
Applied Science Laboratory	370
Other Support Labs	3,628
Large Scale Demonstration/Research Building	4,784
Laboratories, General (Non-Nuclear)	19,926
Multifunction Research/Lab Building	63,563
Total	346,813

BUILDINGS - BY FIELD ORGANIZATION - NAVAL PETROLEUM RESERVES IN CALIFORNIA

<i>Building Usage</i>	<i>Gross Square Feet</i>
Office	136,183
Traditional Classroom Buildings	2,160
Other Institutional Buildings	4,136
All Other Housing	160
General Storage	60,105
Shed Storage	6,000
Production/Manufacturing Buildings	30,162
Manufacturing/Production Related Laboratories	766

BUILDINGS - BY FIELD ORGANIZATION - NAVAL PETROLEUM RESERVES IN CALIFORNIA (CONTINUED)

<i>Building Usage</i>	<i>Gross Square Feet</i>
Other Industrial Facilities	351
Maintenance Shops, General	1,152
Machine Shops	7,000
Vehicle Repair Shops	15,360
Change Houses	5,982
Other Service Buildings	107,838
Metrology and Calibration Laboratory	5,264
Other	15,876
Total	398,495

BUILDINGS - BY FIELD ORGANIZATION - NEVADA

<i>Building Usage</i>	<i>Gross Square Feet</i>
Office	758,818
Post Office	5,700
Medical Clinics	1,195
Auditorium/Theater	4,400
Cafeteria	55,592
Visitors Center	2,562
Recreational Facility	4,960
Computer Buildings	27,892
Other Institutional Buildings	2,270
Visitor Housing	225,124
All Other Housing	86,665
General Storage	429,185
Programmatic General Storage	89,839
Hazardous/Flammable Storage	12,120
Nuclear Contaminated Storage	338
Temperature and Humidity Controlled Warehousing	325
Magazine (Ammunition Storage)	2,842
Shed Storage	5,790

BUILDINGS - BY FIELD ORGANIZATION - NEVADA (CONTINUED)

<i>Building Usage</i>	<i>Gross Square Feet</i>
Fabrication Facility	45,247
Assembly Facilities	2,480
Assembly (Nuclear)	3,000
Materials Handling or Processing Facilities	6,092
Other Industrial Facilities	6,389
Maintenance Shops, General	168,064
Paint Shops	8,477
Welding Shops	1,230
Pipe Fitting and Plumbing Shop	8,720
Carpentry Shops	4,891
Heating Ventilating and Air Conditioning Shops	4,050
Other Buildings Trades Shops	33,987
Machine Shops	90,492
Equipment Calibration Shops	4,502
Electrical/Motor Repair Shops	3,920
Vehicle Repair Shops	20,300
Heavy Equipment Repair Shops	12,780
Change Houses	21,388
Guard Houses	6,479
Communications/Control Centers	34,633
Physical Fitness Facilities	4,800
Gas Stations	2,610
Tool Cribs/Dispensing/Control	4,162
Work in Process/Ready Building	2,688
Helicopter and Airplane Hangers	6,014
Airport Terminal Buildings	2,935
Laundry	739
Laundry (Contaminated)	9,738
Fire Station	25,476
Other Service Buildings	448,113
Metrology and Calibration Laboratory	390,242
Calibration Laboratory	1,609
Other Support Labs	140,201
Chemical Laboratory (Nuclear)	87,236

BUILDINGS - BY FIELD ORGANIZATION - NEVADA (CONTINUED)

<i>Building Usage</i>	<i>Gross Square Feet</i>
Physics Laboratories	14,872
Nuclear Physics Laboratory	4,500
Other Electrical/Electronics Laboratory	8,821
Human Factors Laboratory	6,268
Animal Research Facility	3,920
Materials Laboratory	240
Other Materials R&D Test Buildings	12,131
Laboratories, General (Nuclear)	1,176
Other	6,296
Total	3,387,525

BUILDINGS - BY FIELD ORGANIZATION - OAK RIDGE

<i>Building Usage</i>	<i>Gross Square Feet</i>
Office	3,263,914
Hospital	59,663
Examination and Testing Facilities	4,851
Traditional Classroom Buildings	8,145
Specialized Training Buildings	1,748
Tech Transfer/Conference Buildings	672
Other School Buildings	480
Cafeteria	244,977
Visitors Center	6,488
Museums/Shrines/National Landmarks/Historic Buildings	1,584
Physical Fitness	3,600
Security Headquarters/Badge Issuance/Gate Houses	4,918
Computer Buildings	49,731
Other Institutional Buildings	77,700
Visitor Housing	3,900
All Other Housing	6,800
General Storage	2,637,424

BUILDINGS - BY FIELD ORGANIZATION - OAK RIDGE (CONTINUED)

Building Usage	Gross Square Feet
Programmatic General Storage	65,460
Hazardous/Flammable Storage	96,414
Nuclear Contaminated Storage	697,455
Special Nuclear Material Storage	31,713
Secure Storage Facility	3,200
Magazine (Ammunition Storage)	2,880
Shed Storage	27,386
Production/Manufacturing Buildings	561,249
Production Manufacturing Buildings (Nuclear)	32,639
Production Reactors	1,000
Uranium Enrichment (Diffusion)	24,665,631
Fabrication Facility	304,372
Assembly Facilities	424,505
Manufacturing/Production Related Laboratories	477,545
Manufacturing Inspection Building	6,238
Materials Handling or Processing Facilities	56,270
Nuclear Chemical Process Facilities	99,498
Nuclear Waste Processing and/or Handling Building	83,300
Other Industrial Facilities	611,909
Maintenance Shops, General	1,855,995
Heating Ventilating and Air Conditioning Shops	37,520
Other Buildings Trades Shops	21,772
Machine Shops	1,646,029
Equipment Calibration Shops	8,730
Vehicle Repair Shops	90,170
Railroad Repair Shops	1,239
Change Houses	173,670
Guard Houses	125,288
Communications/Control Centers	27,617
Indoor Firing Ranges	1,400
Laundry (Contaminated)	21,639
Fire Station	82,414
Other Service Buildings	1,370,331
Metrology and Calibration Laboratory	1,280,404

BUILDINGS - BY FIELD ORGANIZATION - OAK RIDGE (CONTINUED)

<i>Building Usage</i>	<i>Gross Square Feet</i>
Applied Science Laboratory	61,301
Calibration Laboratory	3,922
Other Support Labs	720
Chemistry Laboratory (Non-Nuclear)	42,060
Chemical Laboratory (Nuclear)	110,733
Electrical/Electronics Laboratory	82,660
Materials Laboratory	248,451
Other Materials R&D Test Buildings	240
Environmental Laboratory	33,743
Hot Cells	211,872
Research Reactor	295,491
Accelerator Building	472,042
Laboratories, General (Non-Nuclear)	5,062
Laboratories, General (Nuclear)	4,270
Multifunction Research/Lab Building	394,189
Other	680,051
Total	42,016,289

BUILDINGS - BY FIELD ORGANIZATION - PITTSBURGH ENERGY TECHNOLOGY CENTER

<i>Building Usage</i>	<i>Gross Square Feet</i>
Office	110,051
Library	3,224
Other Institutional Buildings	3,268
General Storage	62,601
Programmatic General Storage	430
Hazardous/Flammable Storage	18,165
Environmental Controlled Storage	180
Production/Manufacturing Buildings	74,558
Fabrication Facility	5,000

**BUILDINGS - BY FIELD ORGANIZATION - PITTSBURGH ENERGY
TECHNOLOGY CENTER (CONTINUED)**

<i>Building Usage</i>	<i>Gross Square Feet</i>
Maintenance Shops, General	14,785
Machine Shops	9,000
Vehicle Repair Shops	4,608
Guard Houses	847
Banks and Credit Unions	864
Laundry	335
Other Service Buildings	46,998
Metrology and Calibration Laboratory	296,282
Other Support Labs	194
Other Environmental R&D Test Buildings	6,507
Laboratories, General (Non-Nuclear)	64,000
Other	5,369
Total	727,266

BUILDINGS - BY FIELD ORGANIZATION - PITTSBURGH NAVAL REACTORS OFFICE

<i>Building Usage</i>	<i>Gross Square Feet</i>
Office	206,698
Traditional Classroom Buildings	29,900
Specialized Training Buildings	6,116
Security Headquarters/Badge Issuance/Gate Houses	9,987
All Other Housing	8,600
General Storage	27,571
Programmatic General Storage	27,696
Hazardous/Flammable Storage	4,641
Nuclear Contaminated Storage	17,311
Secure Storage Facility	6,240
Nuclear Waste Processing and/or Handling Building	1,100
Maintenance Shops, General	52,579
Other Buildings Trades Shops	500

**BUILDINGS - BY FIELD ORGANIZATION - PITTSBURGH NAVAL
REACTORS OFFICE (CONTINUED)**

<i>Building Usage</i>	<i>Gross Square Feet</i>
Machine Shops	38,927
Guard Houses	1,178
Communications/Control Centers	3,150
Work in Process/Ready Building	10,753
Quality Assurance Shops	600
Fire Station	2,805
Other Service Buildings	63,948
Computation Laboratory	10,252
Hot Cells	47,638
Research Reactor	177,506
Laboratories, General (Non-Nuclear)	28,446
Laboratories, General (Nuclear)	107,228
Multifunction Research/Lab Building	640,027
Total	1,531,397

BUILDINGS - BY FIELD ORGANIZATION - RICHLAND

<i>Building Usage</i>	<i>Gross Square Feet</i>
Office	1,269,961
Hospital	6,954
Medical Clinics	1,836
Examination and Testing Facilities	2,203
Traditional Classroom Buildings	1,200
Specialized Training Buildings	7,220
Library	21,700
Cafeteria	4,288
Visitors Center	6,969
Security Headquarters/Badge Issuance/Gate Houses	10,268
Computer Buildings	9,935

BUILDINGS - BY FIELD ORGANIZATION - RICHLAND (CONTINUED)

<i>Building Usage</i>	<i>Gross Square Feet</i>
Other Institutional Buildings	600
Visitor Housing	284
General Storage	830,558
Programmatic General Storage	166,925
Hazardous/Flammable Storage	29,183
Nuclear Contaminated Storage	12,064
Special Nuclear Material Storage	66,582
Secure Storage Facility	1,676
Production/Manufacturing Buildings	103,238
Production Reactors	212,876
Fabrication Facility	160,983
Fabrication (Nuclear)	196,076
Manufacturing/Production Related Laboratories	80,692
Manufacturing Inspection Building	13,000
Nuclear Chemical Process Facilities	749,586
Maintenance Shops, General	356,037
Paint Shops	8,544
Carpentry Shops	8,880
Other Buildings Trades Shops	41,837
Machine Shops	28,422
Computer/Communications Repair Shops	1,848
Equipment Calibration Shops	8,902
Vehicle Repair Shops	24,320
Change Houses	41,476
Guard Houses	21,229
Communications/Control Centers	10,183
Tool Cribs/Dispensing/Control	2,210
Laundry (Contaminated)	22,201
Fire Station	35,664
Other Service Buildings	518,649
Metrology and Calibration Laboratory	234,625
Applied Science Laboratory	31,437
Calibration Laboratory	25,362
Other Support Labs	5,300

BUILDINGS - BY FIELD ORGANIZATION - RICHLAND (CONTINUED)

<i>Building Usage</i>	<i>Gross Square Feet</i>
Chemistry Laboratory (Non-Nuclear)	1,148
Chemical Laboratory (Nuclear)	215,731
Physics Laboratories	7,303
Applied Physics Laboratory	3,863
Nuclear Physics Laboratory	13,425
Biological Research Laboratory	5,117
Animal Research Facility	122,665
Animal House	1,272
Materials Laboratory	99,632
Other Materials R&D Test Buildings	27,785
Environmental Laboratory	70,044
Radiation Effects Laboratory	3,637
Research Reactor	228,959
Accelerator Building	8,021
Laboratories, General (Nuclear)	424,480
Other	1,039,554
Total	7,666,619

BUILDINGS - BY FIELD ORGANIZATION - ROCKY FLATS

<i>Building Usage</i>	<i>Gross Square Feet</i>
Office	679,036
Hospital	9,120
Cafeteria	9,280
Visitors Center	240
General Storage	93,075
Programmatic General Storage	47,530
Hazardous/Flammable Storage	6,410
Nuclear Contaminated Storage	3,200
Production/Manufacturing Buildings	5,140
Fabrication Facility	475,580

BUILDINGS - BY FIELD ORGANIZATION - ROCKY FLATS (CONTINUED)

<i>Building Usage</i>	<i>Gross Square Feet</i>
Fabrication (Nuclear)	197,770
Manufacturing/Production Related Laboratories	58,950
Manufacturing Inspection Building	17,490
Nuclear Chemical Process Facilities	1,060,680
Nuclear Waste Processing and/or Handling Building	24,893
Other Industrial Facilities	4,100
Maintenance Shops, General	138,593
Other Buildings Trades Shops	640
Machine Shops	81,195
Change Houses	2,760
Guard Houses	12,632
Communications/Control Centers	10,654
Laundry (Contaminated)	13,700
Fire Station	2,160
Other Service Buildings	107,196
Metrology and Calibration Laboratory	442,516
Other	5,012
Total	3,509,552

BUILDINGS - BY FIELD ORGANIZATION - SAN FRANCISCO

<i>Building Usage</i>	<i>Gross Square Feet</i>
Office	1,830,392
Medical Clinics	24,560
Other Medical or Hospital Facilities	288
Specialized Training Buildings	7,588
Auditorium/Theater	22,183
Tech Transfer/Conference Buildings	2,000
Library	2,130
Cafeteria	52,685
Visitors Center	5,799

BUILDINGS - BY FIELD ORGANIZATION - SAN FRANCISCO (CONTINUED)

<i>Building Usage</i>	<i>Gross Square Feet</i>
Recreational Facility	7,273
Security Headquarters/Badge Issuance/Gate Houses	34,585
Computer Buildings	32,513
Other Institutional Buildings	7,026
General Storage	229,300
Programmatic General Storage	59,529
Hazardous/Flammable Storage	47,382
Nuclear Contaminated Storage	6,511
Special Nuclear Material Storage	4,418
Secure Storage Facility	2,779
Temperature and Humidity Controlled Warehousing	300
Magazine (Ammunition Storage)	1,537
Environmental Controlled Storage	3,135
Shed Storage	5,702
Fabrication Facility	217,815
Assembly Facilities	108,776
Assembly (Nuclear)	1,934
Manufacturing/Production Related Laboratories	48,575
Manufacturing Inspection Building	5,850
Materials Handling or Processing Facilities	11,327
Nuclear Waste Processing and/or Handling Building	3,000
Other Industrial Facilities	7,981
Maintenance Shops, General	156,608
Paint Shops	14,923
Welding Shops	12,747
Other Buildings Trades Shops	3,316
Machine Shops	297,972
Electronics Shops	41,507
Vehicle Repair Shops	28,393
Change Houses	5,043
Guard Houses	2,220
Communications/Control Centers	78,729
Physical Fitness Facilities	2,636
Work in Process/Ready Building	6,402

BUILDINGS - BY FIELD ORGANIZATION - SAN FRANCISCO (CONTINUED)

<i>Building Usage</i>	<i>Gross Square Feet</i>
Quality Assurance Shops	681
Laundry (Contaminated)	462
Fire Station	39,667
Other Service Buildings	136,699
Metrology and Calibration Laboratory	30,807
Computation Laboratory	331,298
Applied Science Laboratory	57,227
Calibration Laboratory	4,000
Other Support Labs	87,026
Chemistry Laboratory (Non-Nuclear)	200,353
Chemical Laboratory (Nuclear)	118,966
Other Chemistry Laboratory	89,196
Physics Laboratories	621,097
Optics Laboratories	38,184
Applied Physics Laboratory	183,442
Nuclear Physics Laboratory	130,612
Other Physics Laboratory	82,580
Electrical/Electronics Laboratory	108,976
Other Electrical/Electronics Laboratory	994
Biological Research Laboratory	355,023
Medical Research Laboratory	19,318
Animal Research Facility	18,901
Animal House	19,960
Materials Laboratory	177,245
Other Materials R&D Test Buildings	228,338
Environmental Laboratory	54,038
Other Environmental R&D Test Buildings	2,111
Large Scale Demonstration/Research Building	621,168
Accelerator Building	1,262,384
Laboratories, General (Non-Nuclear)	20,620
Laboratories, General (Nuclear)	3,422
Multifunction Research/Lab Building	673,105
Other	9,260
Total	9,172,529

BUILDINGS - BY FIELD ORGANIZATION - SAVANNAH RIVER

<i>Building Usage</i>	<i>Gross Square Feet</i>
Office	1,092,629
Traditional Classroom Buildings	34,867
Specialized Training Buildings	26,250
Cafeteria	41,518
Visitors Center	865
Computer Buildings	20,000
General Storage	806,908
Programmatic General Storage	132,047
Hazardous/Flammable Storage	20,869
Nuclear Contaminated Storage	3,250
Temperature and Humidity Controlled Warehousing	3,565
Shed Storage	15,540
Production/Manufacturing Buildings	763,811
Production Manufacturing Buildings (Nuclear)	6,030
Production Reactors	950,256
Fabrication Facility	127,543
Manufacturing/Production Related Laboratories	203,262
Manufacturing Inspection Building	1,351
Materials Handling or Processing Facilities	43,540
Nuclear Chemical Process Facilities	408,687
Other Industrial Facilities	14,509
Maintenance Shops, General	234,825
Pipe Fitting and Plumbing Shop	3,150
Electronics Shops	1,680
Vehicle Repair Shops	2,400
Change Houses	14,216
Guard Houses	80,284
Communications/Control Centers	13,178
Laundry (Contaminated)	12,599
Fire Station	5,919
Other Service Buildings	479,795
Metrology and Calibration Laboratory	477,965

BUILDINGS - BY FIELD ORGANIZATION - SAVANNAH RIVER (CONTINUED)

<i>Building Usage</i>	<i>Gross Square Feet</i>
Environmental Laboratory	4,920
Other	183,901
Total	6,232,129

BUILDINGS - BY FIELD ORGANIZATION - SCHENECTADY NAVAL REACTORS OFFICE

<i>Building Usage</i>	<i>Gross Square Feet</i>
Office	283,616
Hospital	2,490
Traditional Classroom Buildings	183,471
Cafeteria	16,837
Computer Buildings	9,743
Visitor Housing	3,804
General Storage	151,437
Shed Storage	100
Production Reactors	9,443
Nuclear Chemical Process Facilities	29,176
Maintenance Shops, General	48,674
Welding Shops	3,700
Machine Shops	7,860
Change Houses	3,240
Guard Houses	7,990
Fire Station	2,400
Other Service Buildings	189,991
Metrology and Calibration Laboratory	181,257
Other Bio-Med Buildings	5
Other Environmental R&D Test Buildings	1
Research Reactor	116,943
Accelerator Building	4,169
Other	31,184
Total	1,287,531

BUILDINGS - BY FIELD ORGANIZATION - SOUTHWESTERN POWER ADMINISTRATION

<i>Building Usage</i>	<i>Gross Square Feet</i>
Communications/Control Centers	45,983
Total	45,983

BUILDINGS - BY FIELD ORGANIZATION - STRATEGIC PETROLEUM RESERVE PROJECT OFFICE

<i>Building Usage</i>	<i>Gross Square Feet</i>
Office	72,731
Security Headquarters/Badge Issuance/Gate Houses	1,500
Other Institutional Buildings	30,900
General Storage	56,059
Programmatic General Storage	36
Hazardous/Flammable Storage	2,658
Temperature and Humidity Controlled Warehousing	715
Environmental Controlled Storage	265
Shed Storage	10,213
Manufacturing/Production Related Laboratories	1,128
Other Industrial Facilities	3,577
Maintenance Shops, General	44,993
Machine Shops	7,877
Electronics Shops	1,531
Equipment Calibration Shops	560
Vehicle Repair Shops	1,017
Guard Houses	4,721
Communications/Control Centers	27,267
Indoor Firing Ranges	82

**BUILDINGS - BY FIELD ORGANIZATION - STRATEGIC PETROLEUM
RESERVE PROJECT OFFICE (CONTINUED)**

<i>Building Usage</i>	<i>Gross Square Feet</i>
Fire Station	17,173
Other Service Buildings	8,940
Other	5,801
Total	299,744

**BUILDINGS - BY FIELD ORGANIZATION - SUPERCONDUCTING SUPER COLLIDER
PROJECT OFFICE**

<i>Building Usage</i>	<i>Gross Square Feet</i>
Other Materials R&D Test Buildings	41,379
Multifunction Research/Lab Building	96,032
Total	137,411

BUILDINGS - BY FIELD ORGANIZATION - WESTERN AREA POWER ADMINISTRATION

<i>Building Usage</i>	<i>Gross Square Feet</i>
Office	147,745
General Storage	370,027
Hazardous/Flammable Storage	2,037
Manufacturing/Production Related Laboratories	1,440
Maintenance Shops, General	211,141
Vehicle Repair Shops	95,039
Change Houses	1,500
Communications/Control Centers	342,571
Other Service Buildings	76,821
Other	90
Total	1,248,411

BUILDINGS - BY PROGRAM SECRETARIAL OFFICER - CIVILIAN RADIOACTIVE WASTE MANAGEMENT

<i>Building Usage</i>	<i>Gross Square Feet</i>
Office	151,154
Visitors Center	1,200
Security Headquarters/Badge Issuance/Gate Houses	11,088
Computer Buildings	2,890
General Storage	29,755
Programmatic General Storage	6,673
Hazardous/Flammable Storage	2,132
Temperature and Humidity Controlled Warehousing	208
Magazine (Ammunition Storage)	429
Shed Storage	1,943
Manufacturing/Production Related Laboratories	112
Nuclear Chemical Process Facilities	78,282
Maintenance Shops, General	4,239
Machine Shops	8,266
Electrical/Motor Repair Shops	1,555
Vehicle Repair Shops	2,800
Change Houses	2,530
Guard Houses	544
Communications/Control Centers	601
Other Air Service Buildings	4,550
Other Service Buildings	15,118
Metrology and Calibration Laboratory	6,451
Calibration Laboratory	256
Other Chemistry Laboratory	370
Other Electrical/Electronics Laboratory	131
Environmental Laboratory	600
Multifunction Research/Lab Building	17,876
Other	4,075
Total	355,828

BUILDINGS - BY PROGRAM SECRETARIAL OFFICER - CONSERVATION AND RENEWABLE ENERGY

<i>Building Usage</i>	<i>Gross Square Feet</i>
Office	28,975
Visitors Center	1,200
Other Institutional Buildings	54,200
General Storage	17,614
Hazardous/Flammable Storage	982
Maintenance Shops, General	10,060
Vehicle Repair Shops	17,520
Communications/Control Centers	47,410
Other Service Buildings	884
Metrology and Calibration Laboratory	2,579
Computation Laboratory	42,380
Other Support Labs	2,281
Physics Laboratories	5,625
Biological Research Laboratory	229,248
Materials Laboratory	64,500
Environmental Laboratory	976
Other Environmental R&D Test Buildings	150
Large Scale Demonstration/Research Building	13,600
Hot Cells	40,700
Multifunction Research/Lab Building	108,552
Total	689,436

BUILDINGS - BY PROGRAM SECRETARIAL OFFICER - DEFENSE PROGRAMS

<i>Building Usage</i>	<i>Gross Square Feet</i>
Office	7,655,674
Post Office	5,700
Hospital	44,020
Medical Clinics	25,755
Examination and Testing Facilities	12,391
Other Medical or Hospital Facilities	1,028

BUILDINGS - BY PROGRAM SECRETARIAL OFFICER - DEFENSE PROGRAMS (CONTINUED)

<i>Building Usage</i>	<i>Gross Square Feet</i>
Traditional Classroom Buildings	75,127
Specialized Training Buildings	31,682
Auditorium/Theater	24,293
Tech Transfer/Conference Buildings	10,237
Other School Buildings	12,792
Library	30,295
Cafeteria	239,059
Visitors Center	11,670
Recreational Facility	12,965
Physical Fitness	2,160
Security Headquarters/Badge Issuance/Gate Houses	57,710
Computer Buildings	144,604
Other Institutional Buildings	108,211
Visitor Housing	227,248
All Other Housing	86,665
General Storage	3,273,181
Programmatic General Storage	620,671
Hazardous/Flammable Storage	90,269
Nuclear Contaminated Storage	21,696
Special Nuclear Material Storage	80,773
Secure Storage Facility	5,316
Temperature and Humidity Controlled Warehousing	20,590
Magazine (Ammunition Storage)	32,029
Magazine Igloo Staging Facility	685
Environmental Controlled Storage	2,650
Shed Storage	49,697
Production/Manufacturing Buildings	1,334,204
Production Manufacturing Buildings (Nuclear)	6,030
Hazardous Production/Manufacturing Buildings	35,754
Production Reactors	1,164,13
Fabrication Facility	3,677,790
Fabrication (Nuclear)	197,770
Assembly Facilities	955,458
Assembly (Nuclear)	224,570

BUILDINGS - BY PROGRAM SECRETARIAL OFFICER - DEFENSE PROGRAMS (CONTINUED)

<i>Building Usage</i>	<i>Gross Square Feet</i>
Manufacturing/Production Related Laboratories	526,630
Demonstration Facility	43,962
Manufacturing Inspection Building	271,272
Materials Handling or Processing Facilities	96,971
Nuclear Waste Processing and/or Handling Building	46,948
Other Industrial Facilities	612,712
Maintenance Shops, General	1,093,259
Paint Shops	47,340
Welding Shops	7,837
Pipe Fitting and Plumbing Shop	11,870
Carpentry Shops	9,796
Heating Ventilating and Air Conditioning Shops	41,570
Other Buildings Trades Shops	71,994
Machine Shops	2,467,965
Electronics Shops	48,474
Equipment Calibration Shops	4,502
Electrical/Motor Repair Shops	3,920
Vehicle Repair Shops	129,519
Heavy Equipment Repair Shops	12,780
Change Houses	312,865
Guard Houses	253,606
Communications/Control Centers	110,502
Indoor Firing Ranges	512
Physical Fitness Facilities	7,436
Gas Stations	2,610
Tool Cribs/Dispensing/Control	4,162
Work in Process/Ready Building	2,688
Quality Assurance Shops	4,041
Helicopter and Airplane Hangers	6,014
Airport Terminal Buildings	2,935
Laundry	18,073
Laundry (Contaminated)	53,899
Fire Station	101,804
Other Service Buildings	1,827,539

BUILDINGS - BY PROGRAM SECRETARIAL OFFICER - DEFENSE PROGRAMS (CONTINUED)

<i>Building Usage</i>	<i>Gross Square Feet</i>
Metrology and Calibration Laboratory	2,917,091
Computation Laboratory	275,936
Applied Science Laboratory	58,399
Calibration Laboratory	41,998
Other Support Labs	150,715
Chemistry Laboratory (Non-Nuclear)	301,312
Chemical Laboratory (Nuclear)	461,546
Other Chemistry Laboratory	89,436
Physics Laboratories	159,099
Optics Laboratories	156,884
Applied Physics Laboratory	195,423
Nuclear Physics Laboratory	19,946
Other Physics Laboratory	33,392
Electrical/Electronics Laboratory	23,652
Human Factors Laboratory	6,268
Animal Research Facility	3,920
Animal House	250
Materials Laboratory	94,270
Other Materials R&D Test Buildings	175,452
Environmental Laboratory	33,856
Other Environmental R&D Test Buildings	7,813
Large Scale Demonstration/Research Building	298,731
Hot Cells	78,194
Research Reactor	16,100
Accelerator Building	198,176
Laboratories, General (Non-Nuclear)	468,402
Laboratories, General (Nuclear)	81,495
Multifunction Research/Lab Building	789,185
Other	1,131,860
Total	39,390,932

BUILDINGS - BY PROGRAM SECRETARIAL OFFICER - ENERGY RESEARCH

<i>Building Usage</i>	<i>Gross Square Feet</i>
Office	2,074,095
Medical Clinics	7,694
Other Medical or Hospital Facilities	1,680
Traditional Classroom Buildings	1,680
Auditorium/Theater	7,400
Tech Transfer/Conference Buildings	5,372
Other School Buildings	15,819
Library	28,668
Cafeteria	76,907
Visitors Center	3,396
Museums/Shrines/National Landmarks/Historic Buildings	36,284
Recreational Facility	56,896
Physical Fitness	7,200
Security Headquarters/Badge Issuance/Gate Houses	13,827
Computer Buildings	175,656
Other Institutional Buildings	14,843
Visitor Housing	296,171
Motel/Hotel/Lodges	33,186
General Storage	524,988
Programmatic General Storage	186,525
Hazardous/Flammable Storage	37,208
Nuclear Contaminated Storage	13,014
Special Nuclear Material Storage	2,700
Secure Storage Facility	1,188
Environmental Controlled Storage	1,035
Shed Storage	1,330
Production/Manufacturing Buildings	10,950
Fabrication Facility	136,685
Assembly Facilities	232,933
Manufacturing/Production Related Laboratories	107,493
Materials Handling or Processing Facilities	17,355
Nuclear Chemical Process Facilities	7,100
Nuclear Waste Processing and/or Handling Building	680
Other Industrial Facilities	15,323

BUILDINGS - BY PROGRAM SECRETARIAL OFFICER - ENERGY RESEARCH (CONTINUED)

<i>Building Usage</i>	<i>Gross Square Feet</i>
Maintenance Shops, General	173,432
Paint Shops	1,300
Welding Shops	18,863
Carpentry Shops	16,300
Other Buildings Trades Shops	85,871
Machine Shops	150,514
Electronics Shops	36,767
Computer/Communications Repair Shops	6,623
Equipment Calibration Shops	8,437
Vehicle Repair Shops	16,300
Change Houses	1,735
Guard Houses	639
Communications/Control Centers	65,785
Physical Fitness Facilities	3,729
Gas Stations	2,400
Banks and Credit Unions	2,900
Laundry	3,200
Laundry (Contaminated)	12,600
Fire Station	28,014
Other Service Buildings	230,498
Metrology and Calibration Laboratory	814,037
Computation Laboratory	110,781
Applied Science Laboratory	65,252
Calibration Laboratory	90,318
Other Support Labs	120,784
Chemistry Laboratory (Non-Nuclear)	410,428
Chemical Laboratory (Nuclear)	233,813
Other Chemistry Laboratory	2,449
Physics Laboratories	567,200
Optics Laboratories	3,994
Applied Physics Laboratory	347,754
Nuclear Physics Laboratory	331,662
Other Physics Laboratory	142,569
Electrical/Electronics Laboratory	107,243

BUILDINGS - BY PROGRAM SECRETARIAL OFFICER - ENERGY RESEARCH (CONTINUED)

<i>Building Usage</i>	<i>Gross Square Feet</i>
Other Electrical/Electronics Laboratory	1,474
Biological Research Laboratory	367,185
Medical Research Laboratory	241,418
Animal Research Facility	207,867
Other Bio-Med Buildings	86,224
Materials Laboratory	403,699
Other Materials R&D Test Buildings	149,636
Environmental Laboratory	90,976
Radiation Effects Laboratory	73,912
Other Environmental R&D Test Buildings	19,900
Hot Cells	59,146
Research Reactor	292,493
Accelerator Building	3,331,630
Laboratories, General (Non-Nuclear)	313,591
Laboratories, General (Nuclear)	21,302
Multifunction Research/Lab Building	1,017,402
Other	413,259
Total	5,464,436

**BUILDINGS - BY PROGRAM SECRETARIAL OFFICER - ENVIRONMENT,
SAFETY AND HEALTH**

<i>Building Usage</i>	<i>Gross Square Feet</i>
Office	26,246
Computer Buildings	4,190
Other Institutional Buildings	242
Programmatic General Storage	1,000
Secure Storage Facility	13,403
Machine Shops	1,560
Metrology and Calibration Laboratory	29,022
Calibration Laboratory	1,609
Other Support Labs	118,843

**BUILDINGS - BY PROGRAM SECRETARIAL OFFICER - ENVIRONMENT,
SAFETY AND HEALTH (CONTINUED)**

<i>Building Usage</i>	<i>Gross Square Feet</i>
Biological Research Laboratory	76,117
Environmental Laboratory	3,840
Other Environmental R&D Test Buildings	221
Total	276,293

**BUILDINGS - BY PROGRAM SECRETARIAL OFFICER - ENVIRONMENTAL
RESTORATION AND WASTE MANAGEMENT**

<i>Building Usage</i>	<i>Gross Square Feet</i>
Office	2,664,078
Hospital	22,736
Medical Clinics	15,005
Examination and Testing Facilities	4,851
Traditional Classroom Buildings	6,755
Specialized Training Buildings	42,067
Other School Buildings	480
Cafeteria	178,775
Visitors Center	7,390
Museums/Shrines/National Landmarks/Historic Buildings	23,700
Recreational Facility	5,454
Physical Fitness	1,440
Security Headquarters/Badge Issuance/Gate Houses	50,010
Computer Buildings	42,626
Other Institutional Buildings	1,871
Visitor Housing	600
All Other Housing	2,942
General Storage	1,907,559
Programmatic General Storage	157,530
Hazardous/Flammable Storage	156,167
Nuclear Contaminated Storage	807,412
Special Nuclear Material Storage	98,295

BUILDINGS - BY PROGRAM SECRETARIAL OFFICER - ENVIRONMENTAL RESTORATION AND WASTE MANAGEMENT (CONTINUED)

<i>Building Usage</i>	<i>Gross Square Feet</i>
Magazine (Ammunition Storage)	3,146
Shed Storage	3,791
Production/Manufacturing Buildings	200,458
Production Manufacturing Buildings (Nuclear)	32,639
Uranium Enrichment (Diffusion)	9,946,803
Fabrication Facility	76,823
Fabrication (Nuclear)	196,076
Assembly Facilities	12,099
Manufacturing/Production Related Laboratories	297,044
Demonstration Facility	16,870
Manufacturing Inspection Building	6,539
Materials Handling or Processing Facilities	72,150
Nuclear Chemical Process Facilities	355,096
Nuclear Waste Processing and/or Handling Building	218,240
Other Industrial Facilities	54,307
Maintenance Shops, General	1,161,683
Carpentry Shops	4,764
Other Buildings Trades Shops	38,327
Machine Shops	45,516
Electronics Shops	720
Equipment Calibration Shops	17,085
Vehicle Repair Shops	65,126
Railroad Repair Shops	1,239
Change Houses	85,281
Guard Houses	53,587
Communications/Control Centers	17,995
Gas Stations	16,685
Tool Cribs/Dispensing/Control	2,210
Work in Process/Ready Building	22,046
Helicopter and Airplane Hangers	8,459
Laundry (Contaminated)	41,334
Fire Station	91,005
Other Service Buildings	876,896

BUILDINGS - BY PROGRAM SECRETARIAL OFFICER - ENVIRONMENTAL RESTORATION AND WASTE MANAGEMENT (CONTINUED)

<i>Building Usage</i>	<i>Gross Square Feet</i>
Metrology and Calibration Laboratory	274,611
Applied Science Laboratory	150,023
Other Support Labs	6,488
Chemistry Laboratory (Non-Nuclear)	2,374
Chemical Laboratory (Nuclear)	28,170
Physics Laboratories	7,773
Electrical/Electronics Laboratory	3,878
Biological Research Laboratory	17,334
Animal Research Facility	7,404
Animal House	19,960
Other Bio-Med Buildings	1,680
Materials Laboratory	11,153
Other Materials R&D Test Buildings	10,772
Environmental Laboratory	21,566
Other Environmental R&D Test Buildings	2,802
Hot Cells	68,227
Research Reactor	433,632
Laboratories, General (Non-Nuclear)	5,887
Laboratories, General (Nuclear)	416,857
Multifunction Research/Lab Building	117,446
Other	615,717
Total	22,477,462

BUILDINGS - BY PROGRAM SECRETARIAL OFFICER - FOSSIL ENERGY

<i>Building Usage</i>	<i>Gross Square Feet</i>
Office	454,525
Other Medical or Hospital Facilities	1,410
Traditional Classroom Buildings	2,160
Other School Buildings	4,794
Library	3,224

BUILDINGS - BY PROGRAM SECRETARIAL OFFICER - FOSSIL ENERGY (CONTINUED)

<i>Building Usage</i>	<i>Gross Square Feet</i>
Security Headquarters/Badge issuance/Gate Houses	1,500
Computer Buildings	14,824
Other Institutional Buildings	38,304
All Other Housing	160
General Storage	222,478
Programmatic General Storage	466
Hazardous/Flammable Storage	19,122
Temperature and Humidity Controlled Warehousing	715
Environmental Controlled Storage	445
Shed Storage	16,213
Production/Manufacturing Buildings	30,162
Manufacturing/Production Related Laboratories	1,894
Materials Handling or Processing Facilities	6,440
Other Industrial Facilities	3,928
Maintenance Shops, General	56,890
Welding Shops	1,456
Machine Shops	23,877
Electronics Shops	3,067
Equipment Calibration Shops	560
Vehicle Repair Shops	24,363
Change Houses	5,982
Guard Houses	4,968
Communications/Control Centers	29,107
Indoor Firing Ranges	82
Banks and Credit Unions	864
Laundry	335
Fire Station	17,173
Other Service Buildings	174,715
Metrology and Calibration Laboratory	313,546
Computation Laboratory	5,075
Applied Science Laboratory	370
Other Support Labs	12,462
Chemistry Laboratory (Non-Nuclear)	1,560
Physics Laboratories	2,532

BUILDINGS - BY PROGRAM SECRETARIAL OFFICER - FOSSIL ENERGY (CONTINUED)

<i>Building Usage</i>	<i>Gross Square Feet</i>
Applied Physics Laboratory	7,700
Materials Laboratory	1,620
Other Materials R&D Test Buildings	1,300
Other Environmental R&D Test Buildings	640
Large Scale Demonstration/Research Building	13,134
Laboratories, General (Non-Nuclear)	84,526
Multifunction Research/Lab Building	63,563
Other	21,821
Total	1,883,352

BUILDINGS - BY PROGRAM SECRETARIAL OFFICER - NEW PRODUCTION REACTORS

<i>Building Usage</i>	<i>Gross Square Feet</i>
Office	1,577
General Storage	682
Hot Cells	26,638
Total	28,897

BUILDINGS - BY PROGRAM SECRETARIAL OFFICER - NUCLEAR ENERGY

<i>Building Usage</i>	<i>Gross Square Feet</i>
Office	1,564,983
Hospital	24,471
Traditional Classroom Buildings	215,411
Specialized Training Buildings	6,116
Cafeteria	54,058
Security Headquarters/Badge Issuance/Gate Houses	9,987
Computer Buildings	39,743
Other Institutional Buildings	520
Visitor Housing	3,804

BUILDINGS - BY PROGRAM SECRETARIAL OFFICER - NUCLEAR ENERGY (CONTINUED)

<i>Building Usage</i>	<i>Gross Square Feet</i>
All Other Housing	15,400
General Storage	1,118,028
Programmatic General Storage	68,798
Hazardous/Flammable Storage	19,926
Nuclear Contaminated Storage	17,311
Secure Storage Facility	7,015
Environmental Controlled Storage	2,100
Shed Storage	100
Production/Manufacturing Buildings	473,221
Production Reactors	9,443
Uranium Enrichment (Diffusion)	14,735,201
Fabrication Facility	320,757
Assembly Facilities	37,532
Manufacturing/Production Related Laboratories	143,281
Manufacturing Inspection Building	192
Nuclear Chemical Process Facilities	29,176
Nuclear Waste Processing and/or Handling Building	9,069
Maintenance Shops, General	945,006
Welding Shops	12,940
Other Buildings Trades Shops	500
Machine Shops	56,040
Electronics Shops	4,821
Vehicle Repair Shops	19,026
Change Houses	3,240
Guard Houses	60,862
Communications/Control Centers	26,289
Indoor Firing Ranges	1,400
Work in Process/Ready Building	17,155
Quality Assurance Shops	600
Fire Station	20,688
Other Service Buildings	975,542
Metrology and Calibration Laboratory	640,696
Computation Laboratory	10,252
Applied Science Laboratory	49,628

BUILDINGS - BY PROGRAM SECRETARIAL OFFICER - NUCLEAR ENERGY (CONTINUED)

<i>Building Usage</i>	<i>Gross Square Feet</i>
Calibration Laboratory	4,000
Chemistry Laboratory (Non-Nuclear)	4,800
Physics Laboratories	78,548
Optics Laboratories	8,632
Electrical/Electronics Laboratory	82,660
Other Bio-Med Buildings	5
Materials Laboratory	15,024
Other Materials R&D Test Buildings	1
Large Scale Demonstration/Research Building	322,437
Hot Cells	164,335
Research Reactor	481,400
Accelerator Building	4,169
Laboratories, General (Non-Nuclear)	106,303
Laboratories, General (Nuclear)	188,592
Multifunction Research/Lab Building	970,123
Other	138,423
Total	24,340,020

BUILDINGS - BY PROGRAM SECRETARIAL OFFICER - WORK FOR OTHERS

<i>Building Usage</i>	<i>Gross Square Feet</i>
Office	279,467
Specialized Training Buildings	2,156
Computer Buildings	15,748
Other Institutional Buildings	704
General Storage	935
Programmatic General Storage	2,249
Fabrication Facility	28,063
Machine Shops	979
Electronics Shops	4,950
Guard Houses	1,040

BUILDINGS - BY PROGRAM SECRETARIAL OFFICER - WORK FOR OTHERS (CONTINUED)

<i>Building Usage</i>	<i>Gross Square Feet</i>
Communications/Control Centers	1,504
Metrology and Calibration Laboratory	88,543
Computation Laboratory	4,920
Applied Science Laboratory	27,100
Other Support Labs	410
Chemistry Laboratory (Non-Nuclear)	9,523
Physics Laboratories	109,283
Applied Physics Laboratory	2,272
Nuclear Physics Laboratory	7,700
Biological Research Laboratory	4,204
Environmental Laboratory	34,815
Laboratories, General (Non-Nuclear)	7,535
Other	2,702
Total	636,802

BUILDINGS - BY PROGRAM SECRETARIAL OFFICER - OTHER

<i>Building Usage</i>	<i>Gross Square Feet</i>
Office	1,805,193
Medical Clinics	11,820
Examination and Testing Facilities	3,883
Traditional Classroom Buildings	4,488
Specialized Training Buildings	1,455
Library	21,700
Cafeteria	40,484
Visitors Center	10,386
Recreational Facility	820
Security Headquarters/Badge Issuance/Gate Houses	10,304
Computer Buildings	133,882
Other Institutional Buildings	231,403
Visitor Housing	73,342

BUILDINGS - BY PROGRAM SECRETARIAL OFFICER - OTHER (CONTINUED)

<i>Building Usage</i>	<i>Gross Square Feet</i>
General Storage	661,287
Programmatic General Storage	122,908
Hazardous/Flammable Storage	42,595
Nuclear Contaminated Storage	8,064
Special Nuclear Material Storage	5,919
Secure Storage Facility	1,676
Temperature and Humidity Controlled Warehousing	140
Magazine (Ammunition Storage)	1,064
Environmental Controlled Storage	39,905
Shed Storage	4,179
Production/Manufacturing Buildings	22,542
Fabrication Facility	36,868
Fabrication (Nuclear)	172,963
Manufacturing/Production Related Laboratories	90,441
Materials Handling or Processing Facilities	165,595
Nuclear Chemical Process Facilities	3,613
Nuclear Waste Processing and/or Handling Building	4,229
Maintenance Shops, General	483,844
Paint Shops	8,544
Welding Shops	468
Carpentry Shops	8,880
Other Buildings Trades Shops	10,958
Machine Shops	100,732
Electronics Shops	8,005
Computer/Communications Repair Shops	1,848
Equipment Calibration Shops	8,902
Vehicle Repair Shops	14,334
Change Houses	3,152
Guard Houses	48,347
Communications/Control Centers	20,946
Gas Stations	6,330
Airport Terminal Buildings	2,731
Fire Station	74,666
Other Service Buildings	474,229

BUILDINGS - BY PROGRAM SECRETARIAL OFFICER - OTHER (CONTINUED)

<i>Building Usage</i>	<i>Gross Square Feet</i>
Metrology and Calibration Laboratory	72,193
Computation Laboratory	384,205
Applied Science Laboratory	170,469
Calibration Laboratory	25,362
Other Support Labs	46,775
Chemistry Laboratory (Non-Nuclear)	5,392
Chemical Laboratory (Nuclear)	419,383
Other Chemistry Laboratory	5,536
Physics Laboratories	21,307
Optics Laboratories	40,260
Applied Physics Laboratory	4,783
Nuclear Physics Laboratory	696,627
Other Physics Laboratory	17,766
Electrical/Electronics Laboratory	63,450
Communications Laboratory	112,528
Biological Research Laboratory	94,387
Animal House	1,272
Materials Laboratory	36,531
Other Materials R&D Test Buildings	79,819
Environmental Laboratory	30,934
Radiation Effects Laboratory	1,048
Other Environmental R&D Test Buildings	141,497
Hot Cells	44,688
Accelerator Building	141,698
Laboratories, General (Non-Nuclear)	126,237
Laboratories, General (Nuclear)	332,070
Multifunction Research/Lab Building	359,656
Other	64,339
Total	8,557,138

OTHER STRUCTURES AND FACILITIES

OTHER STRUCTURES AND FACILITIES - DEPARTMENTWIDE

<i>Type of Usage</i>	<i>Total Units/ Unit of Measure</i>	<i>Total Cost</i>
Sidewalks	1,191,499.98/Lin. Ft.	\$7,017,367
Bridges (Walking)	2,658/Lin. Ft.	462,880
Other, Air Transportation Systems	2,924/Each	1,826,149
Runways	10,872.32/Lin. Ft.	3,658,546
Taxiways	178/Lin. Ft.	72,600
Helicopter Landing Pad	8,242.70/Sq. Yd.	210,077
Parking (Aircraft)	2,050/Sq. Yd.	290,015
Piers	605.10/Lin. Ft.	3,350
Docks/Wharves	1,904/Lin. Ft.	28,719,054
Other, Railroad Transportation System	3,921,369.10/Each	14,100,848
Primary Tracks	170.54/Lin. Mi.	34,287,287
Bridges (Trains)	760/Lin. Ft.	1,129,212
Other, Vehicular Transportation Systems	624,641.10/Each	74,382,450
Primary Roads	2,748.19/Lin. Mi.	109,607,744
Secondary Roads	32,319.29/Lin. Mi.	26,057,339
Tertiary Roads	442.92/Lin. Mi.	30,884,529
Bridges (Vehicular)	13,531/Lin. Ft.	4,541,455
Parking (Vehicular)	6,106,438.54/Sq. Yd.	54,014,682
Catchall	54,421,371.52/Each	1,452,605,848
Air Traffic Aids	1/Each	20,022
Fencing (Security)	14,004,033.90/Lin. Ft.	57,619,252
Towers (Security)	1,031/Ht. Ft.	4,423,182
Ranges, Rifle/Pistol (Security)	6,427/Firing Pts.	4,035,463
Other, Reclamation and Irrigation	332/Each	292,802

OTHER STRUCTURES AND FACILITIES - DEPARTMENTWIDE (CONTINUED)

<i>Type of Usage</i>	<i>Total Units/ Unit of Measure</i>	<i>Total Cost</i>
Storage/Diversion Dams (Reclamation)	1,800/Ft.	\$43,967
Other, Flood Control and Navigation Dams	1,193,481.06/Each	633,059
Levees/Dikes	384,479/Acrft.	253,124
Other, Monuments & Memorials	273.49/Lin. Mi.	598,404
Structures, Monuments & Memorials	3/Each	396,049
Other, Research and Development	6/Each	118,747
Other, Energy Research Accelerators	231,837,286.72/Each	819,355,570
Accelerators, Ring	92,738/Sq. Ft.	348,701,745
Accelerators, Linear	630,280/Sq. Ft.	580,620,928
Other, Storage	24/Sq. Ft.	32,857,801
Other, Water Storage	13,528,647.80/Each	29,460,066
Tanks, Gravity (Potable)	64,819,204.40/Gal.	23,537,718
Tanks, Gravity (Non-Potable)	5,213,500/Gal.	1,253,068
Tanks, Gravity (Fire Protection)	250,000/Gal.	25,867
Tanks, Pressure (Potable)	250,000/Gal.	18,944
Tanks, Pressure (Non-Potable)	1,272,594/Gal.	2,863,162
Tanks, Pressure (Fire Protection)	1,180,003/Gal.	54,717
Other, Tanks (Oil)	591,800/Gal.	295,595
Tanks (Oil)	360,961.10/Gal.	176,857
Caverns (Oil)	93,603,677/Gal.	22,236,868
Other Tanks (Gas)	798,100,000/Bbbs.	373,445,907
Tanks (Other Combustible Gases)	3,397,162.04/Cu. Ft.	2,070,007
Tanks (Process Gas)	45,106.50/Cu. Ft.	639,463
Other, Storage (Industrial Waste/Hazard)	12,539.60/Cu. Ft.	285,956
Tanks (Industrial/Not Hazardous)	89,779,888.62/Cu. Ft.	50,951,199
Tanks (Hazardous, Not Contaminated)	745,200/Gal.	3,943,460
Tanks (Hazardous, Contaminated)	50,600/Gal.	2,221,408
Vaults/Bunkers (Explosives)	30,001/Gal.	33,215
Igloos (Explosives)	1,685,348/Cu. Ft.	3,778,003
Tanks (Sewage)	1,066,000/Cu. Ft.	2,000,090
Storage (Open Pavement)	239.33/KGal.	3,395,469
Pumping Stations	1,727,294.53/Sq. Yd.	17,988,665
Structures, Industrial, Oil	21/Each	13,790,203
	535,324/Each	1,573,167,338

OTHER STRUCTURES AND FACILITIES - DEPARTMENTWIDE (CONTINUED)

<i>Type of Usage</i>	<i>Total Units/ Unit of Measure</i>	<i>Total Cost</i>
Plants (Water Treatment)	67,561,774/Gal. Day	\$20,893,621
Other, Industrial, Water Wells	74,528.70/Gal. Min.	22,671,500
Wells (Potable Water)	31,521/Gal. Min.	9,309,162
Wells (Non-Potable)	8,350/Gal. Min.	691,551
Wells (Oil)	68,082/Bbls.	580,113,168
Plants (Other Combustible Gases)	96,000,000/Cu. Ft. Day	252,700
Plants (Process Gas)	62/Each	74,733,504
Wells (Natural Gas)	32/Cu .Ft. Min.	5,045,611
Other, Plants (Industrial Waste/Hazard)	257,136/Gal. Day	7,238,886
Plants (Hazardous Not Contaminated)	1/Gal. Day	17,409
Plants (Contaminated, Hazardous)	190/Gal. Day	10,363,260
Other, Plants (Sewer)	3,274,020.41/Each	86,170,472
Plants (Sewer, Primary Treatment)	33,153,548.76/Gal. Day	9,293,907
Plants (Sewer, Secondary Treatment)	2,741,000/Gal. Day	1,941,202
Plants (Sewer, Tertiary Treatment)	19,216,892.50/Gal. Day	10,977,459
Septic Tanks (Sewer)	574,317.60/Gal.	6,366,122
Plants (Stormwater, Primary Treatment)	6,300,000/Gal. Day	1,204,976
Plants (Chill Water)	41,503/Tons	21,364,273
Plants (Evaporative Cooling)	2,334/Tons	363,000
Towers (Chill Water)	1,518,368.80/Tons	47,639,062
Cooling Ponds or Reservoirs	2,796,520/Sq. Ft.	4,224,378
Other, Heating Systems	504,817,480.90/BTU Hr.	90,555,895
Other, Boilers	36,392,573/BTU Hr.	78,493
Plants (Gas-Fired)	793,362,772/BTU Hr.	26,286,414
Plants (Oil-Fired)	964,312,924.52/BTU Hr.	15,762,391
Plants (Coal-Fired)	6,613,609,138/BTU Hr.	86,425,614
Electric Generators	79,189.06/KVA	14,648,667
Other, Photovoltaic Systems	60/KWatts	547,077
Other, Electrical Systems	134,521/KWatts	5,862,459
Plants (Gas-Fired)	1,214/KWatts	450,780
Plants (Oil-Fired))	1/KWatts	1
Transmission Lines 230 KV	2/Lin. Mi.	116,321
Other, Service Structures	1,325,924.22/Sq. Ft.	31,699,594
Other, Other Service Structures	84,501.50/Each	22,236,843

OTHER STRUCTURES AND FACILITIES - DEPARTMENTWIDE (CONTINUED)

<i>Type of Usage</i>	<i>Total Units/ Unit of Measure</i>	<i>Total Cost</i>
POL Services for Aircraft	2/Pumps	\$73,900
POL Services for Vehicles	962/Pumps	325,762
Incinerator Plants	133/Each	1,102,299
Vehicle Service	41,345/Sq. Ft.	231,990
Vehicle Weighing Facility	1/Each	4,266
Other, Paving Structures	540,063/Sq. Yd.	4,649,722
Paving	208,561/Sq. Yd.	973,578
Street Lights	385,374.50/Lin. Ft.	3,978,409
Security Lights	216,721.85/Lin. Ft.	7,051,236
Other, Communications System Lines	132/Each	21,778,727
Other, Communications Monitoring Systems	147,309.80/Each	60,079,913
Other, Communications Systems	1,913,735.20/Each	101,529,271
Cables, Above Ground (Voice/Data)	6,602,948/Lin. Ft.	6,058,390
Cables, Under Ground (Voice/Data)	3,075,883/Lin. Ft.	21,219,039
Poles (Voice/Data)	107/Each	43,542
Towers (Voice/Data)	226,845.40/Ht. Ft.	2,207,728
Switching Stations (Voice/Data)	8/Each	1,093,265
Cables, Above Ground (Fire Alarm)	55,818/Lin. Ft.	1,856,581
Cables, Under Ground (Fire Alarm)	589,212/Lin. Ft.	2,042,355
Other, Security Systems	296/Each	24,468,550
Cables, Above Ground (Security)	71,780/Lin. Ft.	313,286
Cables, Under Ground (Security)	70,793.60/Lin. Ft.	2,925,370
Other, Energy Management Control Systems	7,065/Pts.	17,500,216
Cables, Under Ground (Energy Management)	54,098/Lin. Ft.	363,066
Pipelines	1,707,793/Lin. Ft.	467,727,282
Other, Water Lines	4,209,599.60/Lin. Ft.	182,358,515
Piping (Potable Water)	2,921,022.40/Lin. Ft.	413,707,046
Piping (Non-Potable Water)	66,131/Lin. Ft.	4,760,610
Piping (Fire Protection, Water)	53,459/Lin. Ft.	1,416,458
Other, Pumping Stations	2,283,037.58/Gal. Min.	16,373,967
Pumping Stations (Potable Water)	13,450,652.30/Gal. Min.	6,961,650
Pumping Stations (Non-Potable Water)	2,665/Gal. Min.	1,463,535
Pumping Stations (Fire Protection, Water)	22,652/Gal. Min.	1,047,652
Large Piping (Petroleum Products)	300,848/Lin. Ft.	5,055,046

OTHER STRUCTURES AND FACILITIES - DEPARTMENTWIDE (CONTINUED)

<i>Type of Usage</i>	<i>Total Units/ Unit of Measure</i>	<i>Total Cost</i>
Medium Piping (Petroleum Products)	4,428,631/Lin. Ft.	\$32,559,336
Pumps (Petroleum Products)	81/Gal. Min.	185,048
Piping (Other Combustible Gases)	4,920/Lin. Ft.	198,506
Piping (Natural Gas)	5,325,637.80/Lin. Ft.	43,764,944
Piping (Industrial, Process Gas)	48,019/Lin. Ft.	5,295,429
Other, Gas Distribution System	2,889,495/Each	194,592,884
Metering Stations (Natural Gas)	59,424/Cu. Ft. Min.	219,571
Pumping Stations (Natural Gas)	101,868.30/Cu. Ft. Min.	154,589
Other Ind. Waste/Hazard Materials Distribution Lines	301,109.40/Lin. Ft.	8,696,417
Piping (Hazardous, Not Contaminated Waste)	700/Lin. Ft.	29,544
Piping (Hazardous & Contaminated Waste)	1,933/Lin. Ft.	2,057,093
Piping, Pressure (Sewage)	325,842.60/Lin. Ft.	11,181,216x
Piping, Gravity (Sewage)	1,433,410.01/Lin. Ft.	40,394,646
Lift Stations (Sewage)	1,712/Gal. Min.	448,917
Piping, Gravity (Stormwater)	558,208.38/Lin. Ft.	10,930,103
Piping, Pressure (Stormwater)	22,682/Lin. Ft.	1,504,343
Other, Chill Water Distribution System	79,592/Lin. Ft.	12,598,722
Supply Piping (Chill Water)	1,270/Lin. Ft.	20,000
Piping, Supply (High-Temperature Water)	24,847/Lin. Ft.	153,835
Piping, Return (High-Temperature Water)	4,694/Lin. Ft.	51,416
Piping, Supply (Steam)	23,331,078.85/Lin. Ft.	79,709,400
Piping, Return (Steam/Condensate)	174,621/Lin. Ft.	3,888,418
Other, Electrical Distribution System	40,132,524.21/Each	584,401,223
Electrical Cables, Primary	6,067.48/Lin. Mi.	62,357,406
Electrical Cables, Secondary	887.40/Lin. Mi.	88,809,193'
Electrical Cables, Tertiary	117,508.30/Lin. Mi.	89,305,730
Poles/Towers (Electrical Distribution)	15,486/Each	4,520,560
Substations	3,185,981.20/KVA	219,864,983
Power Transformers	709,573.50/KVA	41,028,667
Distribution Transformers	899,600.30/KVA	30,692,487
Total		\$9,989,477,412

OTHER STRUCTURES AND FACILITIES - ALBUQUERQUE FIELD OFFICE

<i>Type of Usage</i>	<i>Total Units/ Unit of Measure</i>	<i>Total Cost</i>
Sidewalks	764,539/Lin. Ft.	\$1,348,952
Bridges (Walking)	1,348/Lin. Ft.	32,313
Other, Air Transportation Systems	2,923/Each	1,777,649
Runways	7,795.88/Lin. Ft.	1,912,676
Parking (aircraft)	250/Sq. Yd.	178,215
Other, Railroad Transportation Systems	1/Each	649,966
Primary Tracks	25.06/l in. Mi.	6,052,584
Other, Vehicular Transportation Systems	5/Each	948,634
Primary Roads	2,087.66/Lin. Mi.	23,510,433
Secondary Roads	32,123.64/Lin. Mi.	7,820,510
Tertiary Roads	88.71/Lin. Mi.	1,280,942
Bridges (Vehicular)	961/Lin. Ft.	1,936,244
Parking (Vehicular)	1,893,507.37/Sq. Yd.	5,927,286
Catchall	378,689.50/Each	57,634,495
Air Traffic Aids	1/Each	20,022
Fencing (Security)	10,332,525.40/Lin. Ft.	11,754,992
Towers (Security)	339/Ht. Ft.	755,444
Ranges, Rifle/Pistol (Security)	222/Firing Pts.	536,058
Storage/Diversion Dams (Reclamation)	800/Ft.	33,967
Dams	442/Acre Ft.	179,833
Other, Monuments & Memorials	3/Each	396,049
Structures, Monuments & Memorials	5/Each	93,747
Other, Research and Development	3/Each	63,382
Other, Energy Research Accelerators	100/Sq. Ft.	428,037
Other, Storage	4,864/Each	3,141,216
Other, Water Storage	9,699,305.10/Gal.	2,954,415
Tanks, Gravity (Potable)	2,650,000/Gal.	872,014
Tanks, Pressure (Potable)	47,594/Gal.	2,704,381
Other, Tanks (Oil)	335,961.10/Gal.	136,513
Tanks (Oil)	4,850,693/Gal.	2,510,641
Other Tanks (Gas)	12,604.06/Cu. Ft.	91,5639
Tanks (Other Combustible Gases)	7,350/Cu. Ft.	93,786
Tanks (Process Gas)	487.92/Cu. Ft.	19,323
Other, Storage (Industrial Waste/Hazard)	76,380.32/Cu. Ft.	1,070,320

OTHER STRUCTURES AND FACILITIES - ALBUQUERQUE FIELD OFFICE (CONTINUED)

<i>Type of Usage</i>	<i>Total Units/ Unit of Measure</i>	<i>Total Cost</i>
Tanks (Industrial/Not Hazardous)	20,000/Gal.	\$24,602
Tanks (Hazardous Not Contaminated)	100/Gal.	253,277
Tanks (Hazardous Contaminated)	30,000/Gal.	30,000
Vaults/Bunkers (Explosives)	354,556/Cu. Ft.	2,115,064
Repos (Explosives)	1,066,000/Cu. Ft.	2,000,090
Tanks (Sewage)	8/KGal.	283,040
Storage (Open Pavement)	37,300.80/Sq. Yd.	317,266
Pumping Stations	3/Each	1,217,430
Structures, Industrial, Other	20/Each	337,843
Plants (Water Treatment)	1,278,681/Gal. Day	1,451,811
Wells (Potable Water)	15,260/Gal. Min.	6,025,690
Other, Plants (Industrial Waste/Hazard)	30,000/Gal. Day	1,637,917
Plants (Hazardous Not Contaminated)	/1Gal. Day	17,409
Other, Plants (Sewer)	434/Each	12,177,788
Plants (Sewer, Primary Treatment)	28,635,000/Gal. Day	1,613,139
Plants (Sewer, Secondary Treatment)	2,000,000/Gal. Day	170,256
Plants (Sewer, Tertiary Treatment)	200,000/Gal. Day	17,850
Septic Tanks (Sewer)	105,759.50/Gal.	774,760
Towers (Chill Water)	27,269/Tons	4,085,164
Plants (Gas-Fired)	681,479,000/BTU Hr.	5,048,585
Plants (Oil-Fired)	32,480/BTU Hr.	0
Electric Generators	32,802/KVA	5,131,033
Plants (Gas-Fired)	1,214/KWatts	450,780
Transmission Lines 230 KV	2/Lin. Mi.	116,321
Other, Service Structures	780,906/Sq. Ft.	20,694,264
Other, Other Service Structures	5.50/Each	49,974
POL Services for Vehicles	1/Pumps	185,000
Incinerator Plants	1/Each	1,064
Vehicle Service	675/Sq. Ft.	55,079
Other, Paving Structures	4,854/Sq. Yd.	36,209
Paving	37,761/Sq. Yd.	121,375
Street Lights	79,066.90/Lin. Ft.	908,285
Security Lights	17,485/Lin. Ft.	1,373,088
Other, Communications System Lines	9/Each	1,366,918

OTHER STRUCTURES AND FACILITIES - ALBUQUERQUE FIELD OFFICE (CONTINUED)

<i>Type of Usage</i>	<i>Total Units/ Unit of Measure</i>	<i>Total Cost</i>
Other, Communications Monitoring Systems	518,00/Each	\$1,698,993
Other, Communications Systems	170,237/Each	19,330,536
Cables, Above Ground (Voice/Data)	6,321,409/Lin. Ft.	3,168,804
Cables, Under Ground (Voice/Data)	666,807/Lin. Ft.	3,788,011
Poles (Voice/Data)	69/Each	28,542
Towers (Voice/Data)	219,543/Ht. Ft.	195,137
Switching Stations (Voice/Data)	2/Each	62,040
Cables, Above Ground (Fire Alarm)	25,148/Lin. Ft.	1,052,887
Cables, Under Ground (Fire Alarm)	539,212/Lin. Ft.	947,053
Other, Security Systems	55/Each	550,366
Cables, Above Ground (Security)	44,880/Lin. Ft.	169,605
Cables, Under Ground (Security)	70,593.60/Lin. Ft.	2,754,400
Other, Energy Management Control Systems	6,315/Pts.	5,296,573
Cables, Under Ground (Energy Management)	41,398/Lin. Ft.	226,566
Other, Water Lines	124,948/Lin. Ft.	4,225,734
Piping (Potable Water)	1,449,945.40/Lin. Ft.	21,749,201
Piping (Non-Potable Water)	26,496/Lin. Ft.	685,653
Piping (Fire Protection, Water)	1,219/Lin. Ft.	455,496
Other, Pumping Stations	508,000/Gal. Min.	447,295
Pumping Stations (Potable Water)	1,766/Gal. Min.	272,470
Pumping Stations (Fire Protection, Water)	1,500/Gal. Min.	80,110
Large Piping (Petroleum Products)	58,150/Lin. Ft.	1,917,959
Medium Piping (Petroleum Products)	5,918/Lin. Ft.	6,112
Pumps (Petroleum Products)	1/Gal. Min.	67,001
Piping (Natural Gas)	1,299,455.80/Lin. Ft.	7,924,595
Other, Gas Distribution System	31,281.10/Each	3,072,560
Metering Stations (Natural Gas)	26,410/Cu. Ft. Min.	41,238
Other Ind. Waste/Hazard Materials Distribution Lines	80,497/Lin. Ft.	3,554,000
Piping, Gravity (Sewage)	251,437.90/Lin. Ft.	5,574,473
Piping, Pressure (Sewage)	149,937/Lin. Ft.	2,028,100
Lift Stations (Sewage)	1,202/Gal. Min.	198,020
Piping, Gravity (Stormwater)	139,503/Lin. Ft.	3,016,363
Other, Chill Water Distribution System	28,791/Lin. Ft.	2,854,469
Piping, Supply (High-Temperature Water)	23,557/Lin. Ft.	138,835

OTHER STRUCTURES AND FACILITIES - ALBUQUERQUE FIELD OFFICE (CONTINUED)

<i>Type of Usage</i>	<i>Total Units/ Unit of Measure</i>	<i>Total Cost</i>
Piping, Return (High-Temperature Water)	3,401/Lin. Ft.	\$36,416
Piping, Supply (Steam)	195,699/Lin. Ft.	5,228,306
Piping, Return (Steam/Condensate)	110,949/Lin. Ft.	2,017,215
Other, Electrical Distribution System	1,169,497.10/Each	26,633,782
Electrical Cables, Primary	4,228.04/Lin. Mi.	5,956,593
Electrical Cables, Secondary	224.18/Lin. Mi.	9,754,444
Electrical Cables, Tertiary	3,126.22/Lin. Mi.	7,150,877
Poles/Towers (Electrical Distribution)	15,483/Each	1,594,259
Substations	536,383.40/KVA	31,371,028
Power Transformers	90,666/KVA	5,117,239
Distribution Transformers	45,352/KVA	3,962,549

OTHER STRUCTURES AND FACILITIES - CHICAGO FIELD OFFICE

<i>Type of Usage</i>	<i>Total Units/ Unit of Measure</i>	<i>Total Cost</i>
Sidewalks	82,308/Lin. Ft.	\$788,994
Primary Tracks	6/Lin. Mi.	510,474
Other, Vehicular Transportation Systems	4/Each	902,331
Primary Roads	91.87/Lin. Mi.	11,099,769
Tertiary Roads	9.61/Lin. Mi.	2,736,010
Parking (Vehicular)	837,488/Sq. Yd.	6,307,873
Catchall	700,759/Each	14,105,286
Fencing (Security)	193,882/Lin. Ft.	1,646,550
Ranges, Rifle/Pistol (Security)	16/Firing Pts.	306,135
Other, Reclamation and Irrigation	329/Each	2,848
Other, Flood Control and Navigation	2,401/Each	71,310
Other, Research and Development	16,382/Each	429,968,419
Other, Energy Research Accelerators	1,501/Sq. Ft.	7,252,207
Accelerators, Ring	548,830/Sq. Ft.	539,538,389
Accelerators, Linear	1/Sq. Ft.	827,777
Other, Storage	6/Each	63,242

OTHER STRUCTURES AND FACILITIES - CHICAGO FIELD OFFICE (CONTINUED)

<i>Type of Usage</i>	<i>Total Units/ Unit of Measure</i>	<i>Total Cost</i>
Other, Water Storage	3,978,500/Gal.	\$2,123,534
Tanks, Gravity (Potable)	400,000/Gal.	0
Tanks (Oil)	2,270,482/Gal.	1,395,831
Other Tanks (Gas)	34,876/Cu. Ft.	593,638
Tanks (Other Combustible Gases)	6,001/Cu. Ft.	239,608
Tanks (Process Gas)	2/Cu. Ft.	111,633
Other, Storage (Industrial Waste/Haz.)	23,818/Cu. Ft.	709,670
Tanks (Hazardous Contaminated)	1/Gal.	3,215
Storage (Open Pavement)	402/Sq. Yd.	69,624
Plants (Water Treatment)	7,484,200/Gal. Day	6,140,923
Other, Industrial, Water Wells	95/Gal. Min.	272,284
Wells (Potable Water)	10,135/Gal. Min.	2,242,488
Other, Plants (Industrial Waste/Hazard)	150/Gal. Day	3,501
Other, Plants (Sewer)	4/Each	481,309
Plants (Sewer, Primary Treatment)	3,142,000/Gal. Day	1,466,357
Septic Tanks (Sewer)	6,500/Gal.	144,546
Plants (Chill Water)	70/Tons	39,124
Plants (Evaporative Cooling)	2,334/Tons	363,000
Towers (Chill Water)	38,756/Tons	1,992,255
Cooling Ponds or Reservoirs	2,125,001/Sq. Ft.	699,601
Other Heating Systems	345,000,000/BTU Hr.	668,130
Plants (Oil-Fired)	59,746,000/BTU Hr.	8,223,119
Plants (Coal-Fired)	637,500,850/BTU Hr.	13,145,165
Electric Generators	3,059/KVA	345,543
Other, Service Structures	12,190/Sq. Ft.	1,267,852
Other, Other Service Structures	4/Each	3,729,535
Incinerator Plants	1/Each	3,208
Street Lights	17,060/Lin. Ft.	280,530
Security Lights	36,920/Lin. Ft.	410,919
Other, Communications System Lines	4/Each	16,519,065
Other, Communications Monitoring Systems	3/Each	865,216
Other, Communications Systems	1,128/Each	1,574,819
Cables, Under Ground (Voice/Data)	11,118/Lin. Ft.	1,000,523
Cables, Above Ground (Fire Alarm)	800/Lin. Ft.	16,057

OTHER STRUCTURES AND FACILITIES - CHICAGO FIELD OFFICE (CONTINUED)

<i>Type of Usage</i>	<i>Total Units/ Unit of Measure</i>	<i>Total Cost</i>
Other, Security Systems	1/Each	\$37,065
Other, Water Lines	76,790/Lin. Ft.	2,610,097
Piping (Potable Water)	415,848/Lin. Ft.	14,604,822
Pumping Stations (Potable Water)	9,702.50/Gal. Min.	2,133,924
Pumping Stations (Fire Protection, Water)	5,800/Gal. Min.	765,376
Piping (Natural Gas)	78,424/Lin. Ft.	626,818
Other, Gas Distribution System	2/Each	14,936
Other Ind. Waste/Hazard Materials Distribution Lines	2,000/Lin. Ft.	248,191
Piping, Gravity (Sewage)	207,432/Lin. Ft.	4,547,854
Piping, Pressure (Sewage)	13,965/Lin. Ft.	612,738
Lift Stations (Sewage)	60/Gal. Min.	31,375
Piping, Gravity (Stormwater)	95,697/Lin. Ft.	1,235,304
Piping, Pressure (Stormwater)	437/Lin. Ft.	8,740
Other, Chill Water Distribution System	27,000/Lin. Ft.	4,634,500
Piping, Supply (Steam)	225,504/Lin. Ft.	17,270,515
Other, Electrical Distribution System	2,640.18/Each	11,951,667
Electrical Cables, Primary	3/Lin. Mi.	800,000
Electrical Cables, Secondary	76/l in. Mi.	12,520,269
Electrical Cables, Tertiary	12/Lin. Mi.	1,379,549
Substations	945,390.20/KVA	23,987,232
Power Transformers	29,782/KVA	806,540
Distribution Transformers	2/KVA	107,085

OTHER STRUCTURES AND FACILITIES - IDAHO FIELD OFFICE

<i>Type of Usage</i>	<i>Total Units/ Unit of Measure</i>	<i>Total Cost</i>
Sidewalks	99,955.98/Lin. Ft.	\$169,830
Helicopter Landing Pad	986.10/Sq. Yd.	59,044
Other, Railroad Transportation Systems	3,920,964.10/Each	1,939,322
Primary Tracks	18.11/Lin. Mi.	2,873,602
Bridges (Trains)	42/Lin. Ft.	18,220

OTHER STRUCTURES AND FACILITIES - IDAHO FIELD OFFICE (CONTINUED)

<i>Type of Usage</i>	<i>Total Units/ Unit of Measure</i>	<i>Total Cost</i>
Septic Tanks (Sewer)	132,093/Gal	\$62,129
Towers (Chill Water)	68,231.80/Tons	876,390
Cooling Ponds or Reservoirs	25,175/Sq. Ft.	799,281
Other Heating Systems	122,216,757.90/BTU Hr.	570,077
Other, Boilers	36,392,573/BTU Hr.	78,493
Plants (Oil-Fired)	132,246,689.52/BTU Hr.	741,081
Plants (Coal-Fired)	500,000/BTU Hr.	13,665,153
Electric Generators	13,700.76/KVA	3,667,501
Other, Service Structures	122,339.22/Sq. Ft.	3,415,309
Other, Other Service Structures	83,379/Each	1,543,965
Vehicle Service	35,350/Sq. Ft.	41,017
Vehicle Weighing Facility	1/Each	4,266
Other, Paving Structures	440/Sq. Yd.	1,813
Paving	1,550/Sq. Yd.	403,929
Street Lights	35,657.60/Lin. Ft.	45,252
Security Lights	17,111.85/Lin. Ft.	792,805
Other, Communications System Lines	2/Each	172,513
Other, Communications Monitoring Systems	146,201.80/Each	2,884,830
Other, Communications Systems	1,740,302/Each	720,874
Cables, Above Ground (Voice/Data)	9,790/Lin. Ft.	101,802
Cables, Under Ground (Voice/Data)	100/Lin. Ft.	93,305
Poles (Voice/Data)	38/Each	15,000
Towers (Voice/Data)	828.40/Ht. Ft.	220,644
Cables, Above Ground (Fire Alarm)	4,200/Lin. Ft.	747,314
Other, Security Systems	7/Each	318,495
Cables, Above Ground (Security)	26,900/Lin. Ft.	143,681
Cables, Under Ground (Security)	200/Lin. Ft.	170,970
Other, Water Lines	161,960.60/Lin. Ft.	6,622,204
Piping (Potable Water)	55,584/Lin. Ft.	3,876,070
Piping (Non-Potable Water)	23,935/Lin. Ft.	3,596,271
Piping (Fire Protection, Water)	15,500/Lin. Ft.	324,545
Other, Pumping Stations	1,249,436.58/Gal. Min.	424,177
Pumping Stations (Potable Water)	74,299.80/Gal. Min.	16,029
Pumping Stations (Non-Potable Water)	225/Gal. Min.	702,595

OTHER STRUCTURES AND FACILITIES - IDAHO FIELD OFFICE (CONTINUED)

<i>Type of Usage</i>	<i>Total Units/ Unit of Measure</i>	<i>Total Cost</i>
Pumping Stations (Fire Protection, Water)	50/Gal. Min.	\$65,940
Medium Piping (Petroleum Products)	400/Lin. Ft.	5,000
Piping (Other Combustible Gases)	2,200/Lin. Ft.	5,000
Piping (Natural Gas)	82,882/Lin. Ft.	764,937
Piping (Industrial, Process Gas)	8,900/Lin. Ft.	2,208,021
Other, Gas Distribution System	2,731,116.90/Each	490,505
Pumping Stations (Natural Gas)	96,648.30/Cu. Ft. Min.	22,299
Other Ind. Waste/Hazard Materials Distribution Lines	80,696.40/Lin. Ft.	56,905
Piping (Hazardous, Not Contaminated Waste)	700/Lin. Ft.	29,544
Piping (Hazardous & Contaminated Waste)	1,930/Lin. Ft.	1,274,152
Piping, Gravity (Sewage)	593,103.11/Lin. Ft.	1,742,719
Piping, Pressure (Sewage)	25,712.60/Lin. Ft.	312,843
Lift Stations (Sewage)	450/Gal. Min.	219,522
Piping, Gravity (Stormwater)	17,961.38/Lin. Ft.	395,767
Piping, Supply (Steam)	22,505,351.85/Lin. Ft.	15,342,832
Piping, Return (Steam/Condensate)	13,272/Lin. Ft.	312,605
Other, Electrical Distribution System	38,664,397.93/Each	22,514,901
Electrical Cables, Primary	48.93/Lin. Mi.	906,708
Electrical Cables, Secondary	107.92/Lin. Mi.	1,852,057
Electrical Cables, Tertiary	17,197.95/Lin. Mi.	4,970,155
Substations	119,411.30/KVA	2,213,143
Power Transformers	131,879.20/KVA	2,562,637
Distribution Transformers	290,565.30/KVA	2,516,530

OTHER STRUCTURES AND FACILITIES - MORGANTOWN ENERGY TECHNOLOGY CENTER

<i>Type of Usage</i>	<i>Total Units/ Unit of Measure</i>	<i>Total Cost</i>
Sidewalks	8,886/Lin. Ft.	\$101,000
Primary Roads	1.40/Lin. Mi.	804,074
Secondary Roads	.80/Lin. Mi.	205,059
Tertiary Roads	.50/Lin. Mi.	0

OTHER STRUCTURES AND FACILITIES - MORGANTOWN ENERGY TECHNOLOGY CENTER (CONTINUED)

<i>Type of Usage</i>	<i>Total Units/ Unit of Measure</i>	<i>Total Cost</i>
Parking (Vehicular)	14,820/Sq. Yd.	\$699,300
Catchall	2/Each	1,987,000
Fencing (Security)	14,664/Lin. Ft.	173,720
Other, Storage	8/Each	58,477
Other Tanks (Gas)	401/Cu. Ft.	43,000
Other, Plants (Industrial Waste/Hazard)	2,880/Gal. Day	0
Plants (Sewer, Primary Treatment)	100,000/Gal. Day	71,000
Plants (Sewer, Secondary Treatment)	15,000/Gal. Day	150,000
Plants (Sewer, Tertiary Treatment)	14,400/Gal. Day	0
Plants (Chill Water)	320/Tons	125,000
Towers (Chill Water)	750/Tons	75,000
Plants (Gas-Fired)	44,883,750/BTU Hr.	0
Other, Paving Structures	3,686/Sq. Yd.	613,000
Paving	4,295/Sq. Yd.	7,000
Street Lights	2,700/Lin. Ft.	52,500
Other, Communications System Lines	1/Each	43,746
Other, Water Lines	7,530/Lin. Ft.	923,000
Piping (Potable Water)	6,000/Lin. Ft.	365,750
Piping (Natural Gas)	3,525/Lin. Ft.	40,000
Piping (Industrial, Process Gas)	14,565/Lin. Ft.	800,000
Other, Gas Distribution System	1/Each	100,00
Other Ind. Waste/Hazard Materials Distribution Lines	1,180/Lin. Ft.	196,670
Piping, Gravity (Sewage)	3,690/Lin. Ft.	271,500
Piping, Supply (Steam)	4,735/Lin. Ft.	319,881
Piping, Return (Steam/Condensate)	4,000/Lin. Ft.	356,000
Electrical Cables, Secondary	1.71/Lin. Mi.	1,044,000
Substations	14,500/KVA	9,822,000

OTHER STRUCTURES AND FACILITIES - NAVAL PETROLEUM RESERVE IN CALIFORNIA

<i>Type of Usage</i>	<i>Total Units/ Unit of Measure</i>	<i>Total Cost</i>
Secondary Roads	50/Lin. Mi.	\$4,683,389
Tertiary Roads	290/Lin. Mi.	572,000
Bridges (Vehicular)	50/Lin. Ft.	78,160
Parking (Vehicular)	40,500/Sq. Yd.	337,311
Catchall	3/Each	177,266
Fencing (Security)	602,357/Lin. Ft.	754,585
Storage/Diversion Dams (Reclamation)	1,000/Ft.	10,000
Other, Storage	88/Each	1,486,853
Other, Water Storage	556,500/Gal.	13,000
Structures, Industrial, Other	502,056/Each	22,162,034
Other, Industrial, Water Wells	100/Gal. Min.	10,800
Wells (Potable Water)	1/Gal. Min.	2,000
Wells (Oil)	68,082/Bbbs.	580,113,168
Plants (Process Gas)	54/Each	73,949,955
Wells (Natural Gas)	32/Cu. Ft. Min.	5,045,611
Towers (Chill Water)	8/Tons	569,639
Other Service Structures	667/Sq. Ft.	320,618
Other, Other Service Structures	79/Each	1,040,874
Other, Communications Monitoring Systems	15/Each	143,445
Other, Communications Systems	21/Each	236,494
Other, Security Systems	1/Each	68,716
Other, Water Lines	2,640,467/Lin. Ft.	21,433,837
Large Piping (Petroleum Products)	242,698/Lin. Ft.	3,137,087
Medium Piping (Petroleum Products)	4,422,313/Lin. Ft.	32,548,224
Piping (Natural Gas)	3,691,755/Lin. Ft.	27,165,306
Other, Gas Distribution System	116,969/Each	175,042,788
Piping, Gravity (Sewage)	14,773/Lin. Ft.	213,969
Other, Electrical Distribution System	705/Each	5,679,923
Electrical Cables, Primary	102/Lin. Mi.	5,949,710
Electrical Cables, Secondary	59/Lin. Mi.	3,688,330
Substations	480/KVA	122,100
Power Transformers	2,014/KVA	1,868,671

OTHER STRUCTURES AND FACILITIES - NEVADA FIELD OFFICE

<i>Type of Usage</i>	<i>Total Units/ Unit of Measure</i>	<i>Total Cost</i>
Sidewalks	135/Lin. Ft.	\$0
Other, Air Transportation Systems	1/Each	48,500
Runways	1,876.44/Lin. Ft.	1,705,936
Taxiways	178/Lin. Ft.	72,600
Helicopter Landing Pad	4,640/Sq. Yd.	90,033
Parking (aircraft)	1,800/Sq. Yd.	111,800
Other, Railroad Transportation Systems	1/Each	323,097
Primary Tracks	16.24/Lin. Mi.	1,664,457
Bridges (Trains)	55/Lin. Ft.	18,317
Other, Vehicular Transportation Systems	165/Each	32,285,250
Secondary Roads	6.73/Lin. Mi.	78,724
Parking (Vehicular)	186,235.68/Sq. Yd.	1,292,760
Catchall	163/Each	14,807,045
Fencing (Security)	13,199.20/Lin. Ft.	2,218,644
Ranges, Rifle/Pistol (Security)	1,848/Firing Pts.	169,870
Other, Research and Development	2,615/Each	16,089,561
Other, Storage	226/Each	7,692,266
Other, Water Storage	22,000/Gal.	45,000
Storage (Open Pavement)	146,370.86/Sq. Yd.	674,026
Other, Industrial, Water Wells	98/Gal. Min.	17,069,837
Other, Plants (Sewer)	31/Each	2,763,328
Other, Heating Systems	3,800/BTU Hr.	43,747
Other, Other Service Structures	13/Each	2,597,333
Incinerator Plants	2/Each	115,553
Paving	4,188/Sq. Yd.	0
Other, Communications Monitoring Systems	1/Each	60,966
Other, Communications Systems	166/Each	14,116,986
Cables, Under Ground (Voice/Data)	1,730/Lin. Ft.	152,889
Towers (Voice/Data)	60/Ht. Ft.	8,385
Other, Security Systems	1/Each	32,843
Piping (Potable Water)	2,336/Lin. Ft.	173,058
Piping (Fire Protection, Water)	100/Lin. Ft.	0
Piping (Natural Gas)	1,950/Lin. Ft.	58,660
Other, Gas Distribution System	10/Each	1,156,938

OTHER STRUCTURES AND FACILITIES - NEVADA FIELD OFFICE (CONTINUED)

<i>Type of Usage</i>	<i>Total Units/ Unit of Measure</i>	<i>Total Cost</i>
Piping, Gravity (Sewage)	1,740/Lin. Ft.	\$38,079
Piping, Supply (Steam)	350/Lin. Ft.	25,904
Other, Electrical Distribution System	351/Each	29,520,887
Electrical Cables, Tertiary	.30/Lin. Mi.	111,918
Substations	750/KVA	129,626
Distribution Transformers	1,173/KVA	7,692,815

OTHER STRUCTURES AND FACILITIES - OAK RIDGE FIELD OFFICE

<i>Type of Usage</i>	<i>Total Units/ Unit of Measure</i>	<i>Total Cost</i>
Sidewalks	50,054/Lin. Ft.	\$1,197,240
Bridges (Walking)	1,310/Lin. Ft.	430,567
Docks/Wharves	25/Lin. Ft.	96,867
Other, Railroad Transportation Systems	8/Each	1,505,321
Primary Tracks	21/1 in. Mi.	6,111,300
Bridges (Trains)	562/Lin. Ft.	497,430
Other, Vehicular Transportation Systems	20/Each	3,451,377
Primary Roads	137.39/Lin. Mi.	24,396,614
Secondary Roads	36.16/Lin. Mi.	3,049,620
Bridges (Vehicular)	1,406/Lin. Ft.	1,066,938
Parking (Vehicular)	1,507,384/Sq. Yd.	12,102,694
Catchall	28,959,078.62/Each	124,357,502
Fencing (Security)	511,468/Lin. Ft.	9,583,435
Towers (Security)	618/Ht. Ft.	3,393,112
Ranges, Rifle/Pistol (Security)	1,720/Firing Pts.	2,020,197
Other, Reclamation and Irrigation	3/Each	289,954
Levees/Dikes	.20/Lin. Mi.	311,388
Other, Research and Development	214/Each	20,810,283
Other, Storage	7,049,390/Each	4,929,907
Other, Water Storage	40,760,601/Gal.	13,465,009
Other, Tanks (Gas)	18,400/Cu. Ft.	40,500

OTHER STRUCTURES AND FACILITIES - OAK RIDGE FIELD OFFICE (CONTINUED)

<i>Type of Usage</i>	<i>Total Units/ Unit of Measure</i>	<i>Total Cost</i>
Other, Storage (Industrial Waste/Haz.)	52,788,500/Cu. Ft.	\$6,097,559
Tanks (Industrial/Not Hazardous)	25,200/Gal.	3,918,858
Tanks (Hazardous Not Contaminated)	50,500/Gal.	1,968,131
Vaults/Bunkers (Explosives)	1,200,399/Cu. Ft.	26,337
Storage (Open Pavement)	974,268/Sq. Yd.	14,477,032
Pumping Stations	2/Each	30,080
Structures, Industrial, Other	67/Each	24,254,579
Plants (Water Treatment)	46,715,134/Gal. Day	10,256,673
Other, Industrial, Water Wells	23,072.70/Gal. Min.	3,880,810
Wells (Potable Water)	4,100/Gal. Min.	89,712
Other, Plants (Industrial Waste/Hazard)	114,026/Gal. Day	1,946,076
Plants (Contaminated, Hazardous)	190/Gal. Day	10,363,260
Other, Plants (Sewer)	1,252/Each	23,085,349
Plants (Sewer, Primary Treatment)	16,948/Gal. Day	3,886,722
Plants (Sewer, Secondary Treatment)	500,000/Gal. Day	17,537
Plants (Sewer, Tertiary Treatment)	5,000,000/Gal. Day	4,083,102
Septic Tanks (Sewer)	231,965.10/Gal.	5,278,640
Plants (Stormwater, Primary Treatment)	6,300,000/Gal. Day	1,204,976
Plants (Chill Water)	964/Tons	6,961,256
Towers (Chill Water)	1,059,957/Tons	28,727,543
Other Heating Systems	18,895,000/BTU Hr.	4,643,116
Plants (Oil-Fired)	3,687,754/BTU Hr.	3,123,188
Plants (Coal-Fired)	5,144,169,400/BTU Hr.	42,634,547
Electric Generators	1,944/KVA	672,918
Other, Photovoltaic Systems	60/KWatts	547,077
Other, Electrical Systems	134,521/KWatts	5,862,459
Other Service Structures	269,560/Sq. Ft.	2,970,901
Other, Other Service Structures	907/Each	6,898,507
POL Services for Vehicles	960/Pumps	84,875
Incinerator Plants	128/Each	902,415
Vehicle Service	1,280/Sq. Ft.	44,340
Other, Paving Structures	28,478/Sq. Yd.	1,133,587
Paving	10,551/Sq. Yd.	154,869
Street Lights	143,470/Lin. Ft.	1,675,887

OTHER STRUCTURES AND FACILITIES - OAK RIDGE FIELD OFFICE (CONTINUED)

<i>Type of Usage</i>	<i>Total Units/ Unit of Measure</i>	<i>Total Cost</i>
Security Lights	30/Lin. Ft.	\$1,057,191
Other, Communications System Lines	3/Each	749,315
Other, Communications Monitoring Systems	66/Each	13,695,948
Other, Communications Systems	829.20/Each	20,305,079
Cables, Above Ground (Voice/Data)	18,000/Lin. Ft.	109,480
Towers (Voice/Data)	10/Ht. Ft.	951,967
Switching Stations (Voice/Data)	5/Each	141,225
Cables, Above Ground (Fire Alarm)	200/Lin. Ft.	24,837
Other, Security Systems	82/Each	13,706,059
Other, Energy Management Control Systems	10/Pts.	1,547,498
Other, Water Lines	738,289/Lin. Ft.	57,445,678
Piping (Potable Water)	526,749/Lin. Ft.	39,265,728
Other, Pumping Stations	391,451/Gal. Min.	3,412,699
Pumping Stations (Potable Water)	28,851/Gal. Min.	144,452
Pumping Stations (Non-Potable Water)	2,000/Gal. Min.	653,740
Piping (Natural Gas)	34,440/Lin. Ft.	938,759
Other, Gas Distribution System	18/Each	12,303,738
Metering Stations (Natural Gas)	33,002/Cu. Ft. Min.	175,138
Other Ind. Waste/Hazard Materials Distribution Lines	96,825/Lin. Ft.	3,840,797
Piping (Hazardous & Contaminated Waste)	3/Lin. Ft.	782,941
Piping, Gravity (Sewage)	127,145/Lin. Ft.	13,618,908
Piping, Pressure (Sewage)	103,098/Lin. Ft.	5,041,974
Piping, Gravity (Stormwater)	102,520/Lin. Ft.	2,058,585
Piping, Pressure (Stormwater)	15,570/Lin. Ft.	1,092,692
Other, Chill Water Distribution System	14,101/Lin. Ft.	5,075,358
Piping, Supply (Steam)	231,892/Lin. Ft.	19,782,504
Piping, Return (Steam/Condensate)	32,500/Lin. Ft.	499,377
Other, Electrical Distribution System	289,950/Each	293,721,471
Electrical Cables, Primary	30/Lin. Mi.	6,296,863
Electrical Cables, Secondary	196.08/Lin. Mi.	29,765,405
Electrical Cables, Tertiary	15/Lin. Mi.	540,504
Substations	340,186.80/KVA	63,370,178
Power Transformers	136,179.80/KVA	27,775,488
Distribution Transformers	12,838/KVA	2,893,972

OTHER STRUCTURES AND FACILITIES - PITTSBURGH ENERGY TECHNOLOGY CENTER

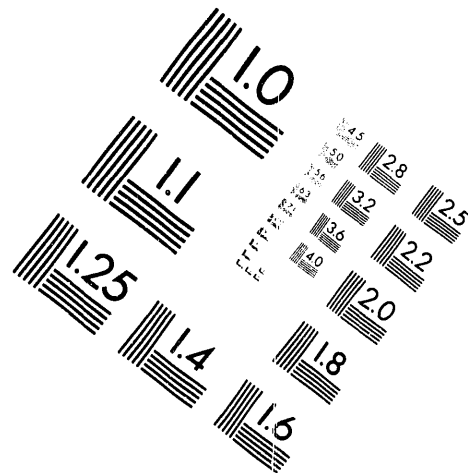
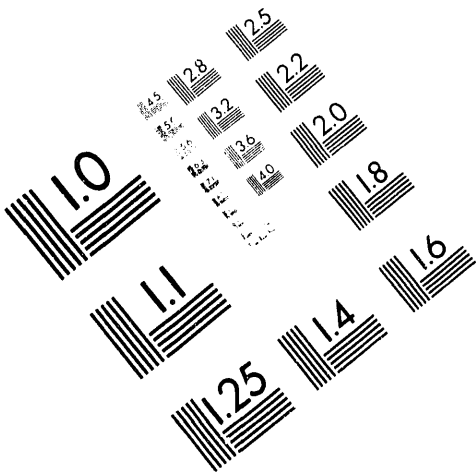
<i>Type of Usage</i>	<i>Total Units/ Unit of Measure</i>	<i>Total Cost</i>
Sidewalks	516/Lin. Ft.	\$20,000
Other, Railroad Transportation Systems	1/Each	154,505
Primary Roads	3.10/Lin. Mi.	1,144,723
Parking (Vehicular)	29,714/Sq. Yd.	638,294
Catchall	51,238.18/Each	33,880,654
Fencing (Security)	19,684.70/Lin. Ft.	334,460
Structures, Monuments & Memorials	1/Each	25,000
Other, Research and Development	32/Each	23,618,152
Other, Storage	11,004/Each	2,645,323
Other, Water Storage	5,845/Gal.	44,927
Tanks (Oil)	230,002/Gal.	222,105
Other Tanks (Gas)	233,561/Cu. Ft.	643,207
Tanks (Process Gas)	5,900/Cu. Ft.	30,000
Other, Plants (Sewer)	2/Each	380,850
Towers (Chill Water)	106,796/Tons	361,288
Other Service Structures	2/Sq. Ft.	30,276
Street Lights	5,820/Lin. Ft.	147,732
Security Lights	1,040/Lin. Ft.	10,000
Other, Communications System Lines	5/Each	8,000
Other, Communications Monitoring Systems	56/Each	284,229
Other, Communications Systems	1/Each	204,901
Cables, Above Ground (Voice/Data)	1,750/Lin. Ft.	50,000
Other, Energy Management Control Systems	15/Pts.	508,146
Other, Water Lines	2,500/Lin. Ft.	64,392
Piping (Potable Water)	11,150/Lin. Ft.	369,011
Piping (Fire Protection, Water)	1,920/Lin. Ft.	40,000
Piping (Natural Gas)	2,100/Lin. Ft.	8,000
Other, Gas Distribution System	1/Each	15,353
Piping, Gravity (Sewage)	9,575/Lin. Ft.	701,128
Supply Piping (Chill Water)	1,270/Lin. Ft.	20,000
Piping, Supply (High-Temperature Water)	1,290/Lin. Ft.	15,000
Piping, Return (High-Temperature Water)	1,290/Lin. Ft.	15,000
Piping, Supply (Steam)	7,000/Lin. Ft.	375,483
Other, Electrical Distribution System	49/Each	9,119,210



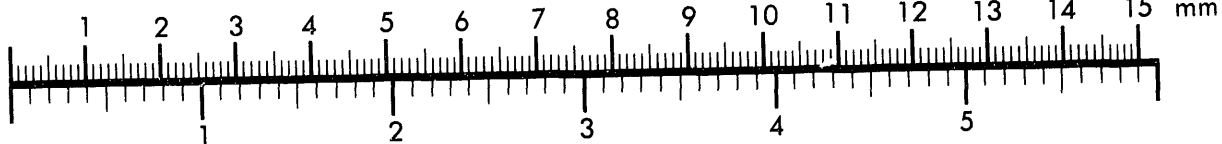
AIM

Association for Information and Image Management

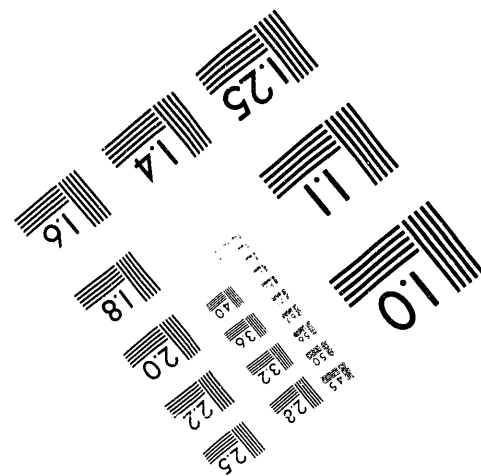
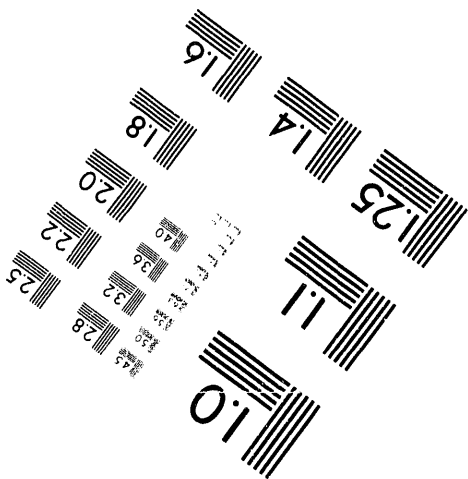
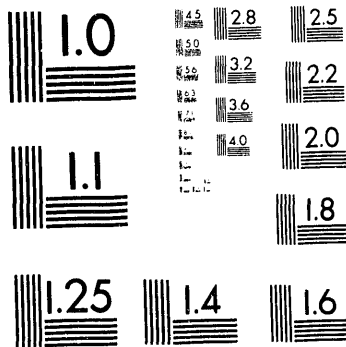
1100 Wayne Avenue, Suite 1100
Silver Spring, Maryland 20910
301/587-8202



Centimeter



Inches



MANUFACTURED TO AIM STANDARDS
BY APPLIED IMAGE, INC.

2 of 2

**OTHER STRUCTURES AND FACILITIES - PITTSBURGH ENERGY
TECHNOLOGY CENTER (CONTINUED)**

<i>Type of Usage</i>	<i>Total Units/ Unit of Measure</i>	<i>Total Cost</i>
Electrical Cables, Tertiary	.50/Lin. Mi.	\$150,000
Substations	32/KVA	626,869
Power Transformers	20,381/KVA	457,348

OTHER STRUCTURES AND FACILITIES - PITTSBURGH NAVAL REACTORS OFFICE

<i>Type of Usage</i>	<i>Total Units/ Unit of Measure</i>	<i>Total Cost</i>
Sidewalks	8,360/Lin. Ft.	\$189,764
Primary Tracks	1/Lin. Mi.	821,805
Primary Roads	9.19/Lin. Mi.	1,449,051
Catchall	17/Each	1,507,338
Fencing (Security)	24,560/Lin. Ft.	1,033,747
Ranges, Rifle/Pistol (Security)	5/Firing Pts.	209,253
Other, Research and Development	2/Each	104,495,974
Other, Storage	2/Each	122,096
Other, Water Storage	105,600/Gal.	15,000
Tanks, Gravity (Non-Potable)	250,000/Gal.	25,867
Tanks, Gravity(Fire Protection)	250,000/Gal.	18,944
Other, Tanks (Oil)	25,000/Gal.	40,344
Tanks (Oil)	495,000/Gal.	356,541
Tanks (Other Combustible Gases)	12,000/Cu. Ft.	34,769
Other, Storage (Industrial Waste/Haz.)	31,415/Cu. Ft.	231,776
Plants (Water Treatment)	316,500/Gal. Day	562,739
Wells (Non-Potable)	8,000/Gal. Min.	682,215
Plants (Process Gas)	2/Each	166,869
Towers (Chill Water)	7,180/Tons	438,004
Plants (Gas-Fired)	67,000,000/BTU Hr.	161,073
Plants (Oil-Fired)	174,300,000/BTU Hr.	1,367,057
Electric Generators	6,518/KVA	1,278,487
Other Service Structures	19,315/Sq. Ft.	267,216
POL Services for Vehicles	1/Pumps	55,887

**OTHER STRUCTURES AND FACILITIES - PITTSBURGH NAVAL
REACTORS OFFICE (CONTINUED)**

<i>Type of Usage</i>	<i>Total Units/ Unit of Measure</i>	<i>Total Cost</i>
Paving	150,200/Sq. Yd.	\$267,695
Security Lights	27,500/Lin. Ft.	216,535
Other, Communications Monitoring Systems	1/Each	223,000
Other, Communications Systems	2/Each	597,635
Cables, Under Ground (Voice/Data)	32,300/Lin. Ft.	946,665
Towers (Voice/Data)	125/Hght. Ft.	8,752
Switching Stations (Voice/Data)	1/Each	890,000
Cables, Under Ground (Fire Alarm)	25,000/Lin. Ft.	64,900
Other, Security Systems	2/Each	874,757
Other, Energy Management Control Systems	213/Pts.	224,942
Cables, Under Ground (Energy Management)	12,700/Lin. Ft.	136,500
Other, Water Lines	3,600/Lin. Ft.	10,378
Piping (Potable Water)	27,800/Lin. Ft.	489,616
Piping (Non-Potable Water)	8,100/Lin. Ft.	38,390
Piping (Fire Protection, Water)	32,400/Lin. Ft.	428,129
Other, Pumping Stations	10,000/Gal. Min.	24,985
Pumping Stations (Fire Protection, Water)	11,550/Gal. Min.	18,884
Piping (Natural Gas)	25,200/Lin. Ft.	332,178
Piping (Industrial, Process Gas)	5,300/Lin. Ft.	30,401
Piping, Gravity (Sewage)	36,500/Lin. Ft.	468,297
Piping, Pressure (Sewage)	900/Lin. Ft.	150,379
Piping, Gravity (Stormwater)	39,800/Lin. Ft.	948,396
Piping, Pressure (Stormwater)	900/Lin. Ft.	33,228
Other, Chill Water Distribution System	9,700/Lin. Ft.	34,395
Piping, Supply (Steam)	12,300/Lin. Ft.	474,451
Piping, Return (Steam/Condensate)	11,400/Lin. Ft.	369,607
Other, Electrical Distribution System	1/Each	119,258
Electrical Cables, Primary	7.51/Lin. Mi.	1,320,586
Electrical Cables, Secondary	1.10/Lin. Mi.	195,367
Substations	98,750/KVA	5,847,034

OTHER STRUCTURES AND FACILITIES - RICHLAND FIELD OFFICE

<i>Type of Usage</i>	<i>Total Units/ Unit of Measure</i>	<i>Total Cost</i>
Sidewalks	28,060/Lin. Ft.	\$81,898
Runways	1,200/Lin. Ft.	39,934
Other, Railroad Transportation Systems	232/Each	2,013,481
Primary Tracks	67/Lin. Mi.	14,942,231
Bridges (Trains)	101/Lin. Ft.	595,245
Other, Vehicular Transportation Systems	1/Each	5,775
Primary Roads	261.29/Lin. Mi.	22,445,235
Secondary Roads	11/Lin. Mi.	880,477
Parking (Vehicular)	462,433/Sq. Yd.	2,731,165
Catchall	19,871/Each	962,144,769
Fencing (Security)	801,333.60/Lin. Ft.	7,704,718
Other, Energy Research Accelerators	2,008/Sq. Ft.	106,508
Other, Storage	22/Each	1,962,529
Other, Water Storage	2,498,208/Gal.	3,041,315
Tanks, Pressure (Non-Potable)	3/Gal.	10,024
Other Tanks (Gas)	2,860,971/Cu. Ft.	183,347
Other, Storage (Industrial Waste/Hazard)	33,462,312/Cu. Ft.	7,436,519
Vaults/Bunkers (Explosives)	11,285/Cu. Ft.	767,450
Storage (Open Pavement)	545,895/Sq. Yd.	976,879
Pumping Stations	3/Each	396,318
Structures, Industrial, Other	47/Each	1,962,355
Plants (Water Treatment)	11,120,000/Gal. Day	556,770
Other, Industrial, Water Wells	10/Gal. Min.	150,014
Wells (Potable Water)	420/Gal. Min.	146,050
Wells (Non-Potable)	350/Gal. Min.	9,336
Other, Plants (Industrial Waste/Hazard)	100,079/Gal. Day	3,586,392
Other, Plants (Sewer)	25/Each	630,741
Plants (Sewer, Primary Treatment)	60,000/Gal. Day	56,678
Plants (Sewer, Secondary Treatment)	226,000/Gal. Day	1,603,409
Septic Tanks (Sewer)	98,000/Gal.	106,047
Cooling Ponds or Reservoirs	554,600/Sq. Ft.	301,612
Other Heating Systems	903/BTU Hr.	39,250,285
Plants (Oil-Fired)	291,900,000/BTU Hr.	276,317
Plants (Coal-Fired)	831,438,888/BTU Hr.	16,980,749

OTHER STRUCTURES AND FACILITIES - RICHLAND FIELD OFFICE (CONTINUED)

<i>Type of Usage</i>	<i>Total Units/ Unit of Measure</i>	<i>Total Cost</i>
Electric Generators	4,311/KVA	\$1,059,007
Other Service Structures	1,300/Sq. Ft.	88,332
Other, Other Service Structures	7/Each	459,948
Other, Paving Structures	502,605/Sq. Yd.	2,865,113
Paving	16/Sq. Yd.	18,710
Security Lights	91,224/Lin. Ft.	367,616
Other, Communications System Lines	89/Each	1,742,666
Other, Communications Monitoring Systems	1/Each	38,855
Other, Communications Systems	178/Each	15,701,899
Towers (Voice/Data)	2,984/Ht. Ft.	601,858
Other, Security Systems	49/Each	2,139,152
Other, Water Lines	25,791/Lin. Ft.	181,918
Piping (Potable Water)	66,171/Lin. Ft.	190,004,826
Piping (Non-Potable Water)	4,860/Lin. Ft.	62,806
Piping (Fire Protection, Water)	2,320/Lin. Ft.	168,288
Other, Pumping Stations	119,400/Gal. Min.	11,996,202
Pumping Stations (Potable Water)	13,320,000/Gal. Min.	93,791
Pumping Stations (Non-Potable Water)	350/Gal. Min.	7,200
Pumping Stations (Fire Protection, Water)	752/Gal. Min.	97,240
Pumps (Petroleum Products)	60/Gal. Min.	108,165
Piping (Natural Gas)	16,975/Lin. Ft.	142,380
Other, Gas Distribution System	10,001/Each	87,917
Pumping Stations (Natural Gas)	4,200/Cu. Ft. Min.	90,092
Other Ind. Waste/Hazard Materials Distribution Lines	38,905/Lin. Ft.	741,355
Piping, Gravity (Sewage)	32,305/Lin. Ft.	2,867,234
Piping, Pressure (Sewage)	450/Lin. Ft.	54,276
Piping, Pressure (Stormwater)	5,775/Lin. Ft.	369,683
Piping, Return (High-Temperature Water)	3/Lin. Ft.	0
Piping, Supply (Steam)	90,034/Lin. Ft.	11,416,444
Other, Electrical Distribution System	325/Each	8,941,586
Electrical Cables, Primary	45/Lin. Mi.	675,912
Electrical Cables, Secondary	78.50/Lin. Mi.	11,554,763

OTHER STRUCTURES AND FACILITIES - RICHLAND FIELD OFFICE (CONTINUED)

<i>Type of Usage</i>	<i>Total Units/ Unit of Measure</i>	<i>Total Cost</i>
Electrical Cables, Tertiary	97,010/Lin. Mi.	\$64,436,515
Substations	361,382.50/KVA	35,306,301
Distribution Transformers	101,847/KVA	1,712,624

OTHER STRUCTURES AND FACILITIES - ROCKY FLATS OFFICE

<i>Type of Usage</i>	<i>Total Units/ Unit of Measure</i>	<i>Total Cost</i>
Sidewalks	3,000/Lin. Ft.	\$1
Primary Tracks	6/Lin. Mi.	457,894
Primary Roads	13/Lin. Mi.	5,125,819
Secondary Roads	25/Lin. Mi.	1
Catchall	2/Each	6,068,810
Fencing (Security)	30/Lin. Ft.	4,373,245
Ranges, Rifle/Pistol (Security)	600/Firing Pts.	258,242
Other, Storage	2,760,000/Each	392,308
Other, Water Storage	1,800,000/Gal.	245,894
Other, Plants (Sewer)	10,151/Each	4,557,933
Towers (Chill Water)	54,100/Tons	2,622,469
Other Heating Systems	1/BTU Hr.	140,070
Security Lights	11/Lin. Ft.	489,560
Other, Communications System Lines	13/Each	1,001,927
Other, Energy Management Control Systems	12/Pts.	9,703,769
Other, Water Lines	6,308/Lin. Ft.	833,932
Piping (Potable Water)	55,015/Lin. Ft.	6,483,646
Piping (Natural Gas)	17,910/Lin. Ft.	1,251,923
Other Ind. Waste/Hazard Materials Distribution Lines	6/Lin. Ft.	2
Piping, Pressure (Sewage)	31,780/Lin. Ft.	2,980,906
Piping, Supply (Steam)	38,284/Lin. Ft.	7,613,681
Electrical Cables, Primary	1/Lin. Mi.	1
Electrical Cables, Secondary	7/Lin. Mi.	7,551,386

OTHER STRUCTURES AND FACILITIES - ROCKY FLATS OFFICE (CONTINUED)

<i>Type of Usage</i>	<i>Total Units/ Unit of Measure</i>	<i>Total Cost</i>
Electrical Cables, Tertiary	6/Lin. Mi.	\$1
Substations	50,000/KVA	972,414
Power Transformers	3,000/KVA	316,684

OTHER STRUCTURES AND FACILITIES - SAN FRANCISCO FIELD OFFICE

<i>Type of Usage</i>	<i>Total Units/ Unit of Measure</i>	<i>Total Cost</i>
Sidewalks	63,011/Lin. Ft.	\$2,690,046
Helicopter Landing Pad	2,616.60/Sq. Yd.	61,000
Primary Roads	51.20/Lin. Mi.	10,562,556
Secondary Roads	8.50/Lin. Mi.	3,760,503
Bridges (Vehicular)	91/Lin. Ft.	55,161
Parking (Vehicular)	521,403/Sq. Yd.	6,403,137
Catchall	965/Each	15,983,347
Fencing (Security)	317,737.40/Lin. Ft.	2,266,902
Towers (Security)	74/Ht. Ft.	274,628
Ranges, Rifle/Pistol (Security)	14/Firing Pts.	4,576
Other, Research and Development	66/Each	142,529,443
Other, Energy Research Accelerators	2/Sq. Ft.	371,548
Accelerators, Ring	81,450/Sq. Ft.	41,082,539
Accelerators, Linear	23/Sq. Ft.	32,030,024
Other, Storage	3,101,071/Each	1,851,632
Other, Water Storage	550,000/Gal.	732,374
Tanks, Gravity (Potable)	2,163,500/Gal.	381,054
Tanks, Pressure (Potable)	400,000/Gal.	30,938
Tanks (Oil)	123,500/Gal.	175,994
Other Tanks (Gas)	9,325.10/Cu. Ft.	320,679
Tanks (Other Combustible Gases)	12,030/Cu. Ft.	120,000
Other, Storage (Industrial Waste/Haz.)	10,946/Cu. Ft.	83,000
Vaults/Bunkers (Explosives)	81,483/Cu. Ft.	574,852
Tanks (Sewage)	200/KGal.	3,000,000

OTHER STRUCTURES AND FACILITIES - SAN FRANCISCO FIELD OFFICE (CONTINUED)

<i>Type of Usage</i>	<i>Total Units/ Unit of Measure</i>	<i>Total Cost</i>
Plants (Water Treatment)	4,000/Gal. Day	\$175,300
Wells (Potable Water)	190/Gal. Min.	88,651
Plants (Other Combustible Gases)	96,000,000/Cu. Ft. Day	252,700
Plants (Process Gas)	6/Each	616,680
Other, Plants (Industrial Waste/Hazard)	10,000/Gal. Day	60,000
Other, Plants (Sewer)	423/Each	1,914,720
Plants (Sewer, Primary Treatment)	20,980.80/Gal. Day	726,697
Plants (Chill Water)	40,149/Tons	14,238,893
Towers (Chill Water)	15,510/Tons	4,823,862
Other Heating Systems	18,700,000/BTU Hr.	1,526,825
Plants (Gas-Fired)	22/BTU Hr.	21,076,756
Electric Generators	15,525/KVA	2,256,126
Plants (Oil-Fired))	1/KWatts	1
Other Service Structures	27,425/Sq. Ft.	1,574,221
Other, Other Service Structures	8/Each	447,659
Incinerator Plants	1/Each	80,059
Street Lights	101,600/Lin. Ft.	868,223
Security Lights	25,400/Lin. Ft.	2,333,522
Other, Communications Monitoring Systems	7/Each	853,010
Other, Communications Systems	97/Each	683,890
Cables, Above Ground (Voice/Data)	79,205/Lin. Ft.	2,515,802
Cables, Under Ground (Voice/Data)	2,358,728/Lin. Ft.	15,218,717
Towers (Voice/Data)	100/Ht. Ft.	18,171
Cables, Under Ground (Fire Alarm)	25,000/Lin. Ft.	1,030,402
Other, Security Systems	91/Each	193,371
Other, Energy Management Control Systems	500/Pts.	219,288
Other, Water Lines	149,530/Lin. Ft.	8,022,843
Piping (Potable Water)	238,610/Lin. Ft.	14,887,285
Pumping Stations (Potable Water)	9,202/Gal. Min.	2,805,722
Pumping Stations (Non-Potable Water)	90/Gal. Min.	100,000
Pumping Stations (Fire Protection, Water)	3,000/Gal. Min.	20,102
Pumps (Petroleum Products)	20/Gal. Min.	9,882
Piping (Other Combustible Gases)	2,720/Lin. Ft.	193,506
Piping (Natural Gas)	60,141/Lin. Ft.	4,092,879

OTHER STRUCTURES AND FACILITIES - SAN FRANCISCO FIELD OFFICE (CONTINUED)

<i>Type of Usage</i>	<i>Total Units/ Unit of Measure</i>	<i>Total Cost</i>
Piping (Industrial,Process Gas)	19,254/Lin. Ft.	\$2,257,007
Other, Gas Distribution System	3/Each	2,051,392
Other Ind. Waste/Hazard Materials Distribution Lines	1,000/Lin. Ft.	58,497
Piping, Gravity (Sewage)	128,800/Lin. Ft.	6,379,057
Piping, Gravity (Stormwater)	135,727/Lin. Ft.	2,687,152
Piping, Supply (Steam)	2,500/Lin. Ft.	333,614
Piping, Return (Steam/Condensate)	2,500/Lin. Ft.	333,614
Electrical Cables, Primary	24/Lin. Mi.	4,268,158
Electrical Cables, Secondary	101.41/Lin. Mi.	8,020,842
Electrical Cables, Tertiary	19.33/Lin. Mi.	5,601,118
Poles/Towers (Electrical Distribution)	3/Each	2,926,301
Substations	712,584/KVA	17,373,393
Power Transformers	284,127.50/KVA	2,102,782
Distribution Transformers	400,737/KVA	10,626,975

OTHER STRUCTURES AND FACILITIES - SAVANNAH RIVER FIELD OFFICE

<i>Type of Usage</i>	<i>Total Units/ Unit of Measure</i>	<i>Total Cost</i>
Sidewalks	57,367/Lin. Ft.	\$359,089
Other, Railroad Transportation Systems	162/Each	7,515,156
Primary Tracks	8.13/Lin. Mi.	835,096
Other, Vehicular Transportation Systems	899/Each	35,241,940
Primary Roads	1.90/Lin. Mi.	615,570
Secondary Roads	18.22/Lin. Mi.	2,590,876
Tertiary Roads	.20/Lin. Mi.	17,524
Parking (Vehicular)	45,718.64/Sq. Yd.	1,679,105
Catchall	1,691/Each	131,712,181
Fencing (Security)	641,640/Lin. Ft.	8,361,566
Other, Storage	4/Each	168,151
Storage (Open Pavement)	9,269.47/Sq. Yd.	470,967
Structures, Industrial, Other	32,086/Each	1,415,330,249

OTHER STRUCTURES AND FACILITIES - SAVANNAH RIVER FIELD OFFICE (CONTINUED)

<i>Type of Usage</i>	<i>Total Units/ Unit of Measure</i>	<i>Total Cost</i>
Plants (Water Treatment)	100,000/Gal. Day	\$1,549,083
Other, Plants (Sewer)	1,398/Each	37,305,496
Other Heating Systems	1,019/BTU Hr.	43,713,645
Other Service Structures	4,029/Sq. Ft.	329,281
Other, Other Service Structures	39/Each	2,710,729
POL Services for Aircraft	2/Pumps	73,900
Vehicle Service	4,040/Sq. Ft.	91,554
Other, Communications Monitoring Systems	433/Each	5,831,177
Other, Communications Systems	686/Each	10,823,517
Cables, Above Ground (Voice/Data)	172,794/Lin. Ft.	112,502
Cables, Under Ground (Voice/Data)	5,100/Lin. Ft.	18,929
Towers (Voice/Data)	120/Ht. Ft.	34,141
Cables, Above Ground (Fire Alarm)	25,470/Lin. Ft.	15,486
Other, Security Systems	1/Each	2,731
Piping (Potable Water)	3,840/Lin. Ft.	110,258,060
Other, Gas Distribution System	13/Each	172,844
Other, Electrical Distribution System	4,595/Each	109,498,997
Substations	150/KVA	4,121

OTHER STRUCTURES AND FACILITIES - SCHENECTADY NAVAL REACTORS OFFICE

<i>Type of Usage</i>	<i>Total Units/ Unit of Measure</i>	<i>Total Cost</i>
Sidewalks	25,308/Lin. Ft.	\$70,553
Primary Roads	10/Lin. Mi.	1,946,223
Secondary Roads	11/Lin. Mi.	471,994
Bridges (Vehicular)	50/Lin. Ft.	17,730
Parking (Vehicular)	159,618/Sq. Yd.	2,883,349
Catchall	9/Each	2,625,964
Fencing (Security)	31,680/Lin. Ft.	1,757,207
Ranges, Rifle/Pistol (Security)	2,000/Firing Pts.	500,162
Other, Energy Research Accelerators	89,127/Sq. Ft.	340,543,445

**OTHER STRUCTURES AND FACILITIES - SCHENECTADY NAVAL
REACTORS OFFICE (CONTINUED)**

<i>Type of Usage</i>	<i>Total Units/ Unit of Measure</i>	<i>Total Cost</i>
Other, Storage	20/Each	\$263,197
Other, Storage (Industrial Waste/Haz.)	18,489/Cu. Ft.	60,981
Storage (Open Pavement)	8,506/Sq. Yd.	608,975
Plants (Water Treatment)	30,000/Gal. Day	1,800
Other, Plants (Sewer)	9/Each	184,092
Plants (Sewer, Primary Treatment)	157,000/Gal. Day	1,112,270
Towers (Chill Water)	139,811/Tons	3,067,448
Cooling Ponds or Reservoirs	91,744/Sq. Ft.	2,423,884
Plants (Oil-Fired)	302,400,001/BTU Hr.	2,031,629
Electric Generators	1,329/KVA	238,052
Other Service Structures	88,191/Sq. Ft.	741,324
Other, Communications System Lines	4/Each	164,618
Other, Communications Systems	41/Each	4,435,666
Other, Security Systems	6/Each	6,545,995
Other, Water Lines	5,500/Lin. Ft.	547,940
Piping (Potable Water)	49,750/Lin. Ft.	3,109,269
Piping (Non-Potable Water)	2,740/Lin. Ft.	377,490
Other, Pumping Stations	4,750/Gal. Min.	68,609
Pumping Stations (Potable Water)	6,500/Gal. Min.	12,950
Piping (Natural Gas)	10,880/Lin. Ft.	418,509
Other, Gas Distribution System	79/Each	83,913
Metering Stations (Natural Gas)	12/Cu. Ft. Min.	3,195
Pumping Stations (Natural Gas)	1,020/Cu. Ft. Min.	42,198
Piping, Gravity (Sewage)	14,220/Lin. Ft.	562,755
Piping, Gravity (Stormwater)	27,000/Lin. Ft.	588,536
Piping, Supply (Steam)	17,429/Lin. Ft.	1,525,785
Electrical Cables, Primary	1/Lin. Mi.	23,377
Electrical Cables, Secondary	34.50/Lin. Mi.	2,862,330
Electrical Cables, Tertiary	121/Lin. Mi.	4,965,093
Substations	23/KVA	694,083
Power Transformers	11,475/KVA	8,991
Distribution Transformers	47,032/KVA	277,260

OTHER STRUCTURES AND FACILITIES - SOUTHWESTERN POWER ADMINISTRATION

<i>Type of Usage</i>	<i>Total Units/ Unit of Measure</i>	<i>Total Cost</i>
Primary Tracks	2/Lin. Mi.	\$17,844
Other, Storage	13/Each	64,841
Storage (Open Pavement)	1/Sq. Yd.	220
Other, Communications System Lines	2/Each	9,959
Other, Communications Systems	39/Each	2,944,446
Towers (Voice/Data)	3,075/Ht. Ft.	168,673
Other, Electrical Distribution System	5/Each	19,421
Electrical Cables, Primary	1,577/Lin. Mi.	36,159,498
Substations	5,658/KVA	28,025,461
Power Transformers	69/KVA	12,287
Distribution Transformers	54/KVA	902,677

OTHER STRUCTURES AND FACILITIES - STRATEGIC PETROLEUM RESERVE PROJECT OFFICE

<i>Type of Usage</i>	<i>Total Units/ Unit of Measure</i>	<i>Total Cost</i>
Piers	605.10/Lin. Ft.	\$3,350
Docks/Wharves	1,879/Lin. Ft.	28,622,187
Secondary Roads	2.80/Lin. Mi.	591,549
Tertiary Roads	52.90/Lin. Mi.	26,188,836
Bridges (Vehicular)	10,843/Lin. Ft.	1,277,667
Catchall	5,595/Each	74,472,603
Fencing (Security)	153,120/Lin. Ft.	3,504,616
Tanks, Pressure (Fire-Protection)	541,800/Gal.	259,502
Tanks (Oil)	84,800,000/Gal.	17,456,321
Caverns (Oil)	798,100,000/Bbbs.	373,445,907
Pumping Stations	13/Each	12,146,375
Other, Plants (Sewer)	2/Each	1,301,491
Plants (Sewer, Tertiary Treatment)	13,971,000/Gal. Day	6,865,498
Other, Other Service Structures	60/Each	2,758,319
Other, Communications Monitoring Systems	7/Each	33,500,214

STRATEGIC PETROLEUM RESERVE PROJECT OFFICE (CONTINUED)

<i>Type of Usage</i>	<i>Total Units/ Unit of Measure</i>	<i>Total Cost</i>
Other, Communications Systems	8/Each	\$9,852,529
Pipelines	1,707,793/Lin. Ft.	467,727,282
Other, Water Lines	266,386/Lin. Ft.	79,436,562
Piping (Potable Water)	2,224/Lin. Ft.	8,070,704
Pumping Stations (Potable Water)	321/Gal. Min.	1,482,311
Piping, Gravity (Sewage)	12,689/Lin. Ft.	3,408,673
Other, Electrical Distribution System	8/Each	66,680,120
Total		\$9,989,477,412

**DATE
FILMED**

8/10/93

END

