

1 of 1

(CLASSIFICATION)

DECLASSIFIED

DOCUMENT NO.

RL-REA-2335

SERIES AND COPY NO.

GENERAL ELECTRIC

HANFORD ATOMIC PRODUCTS OPERATION - RICHLAND, WASHINGTON

DATE

July 2, 1965

X

THIS DOCUMENT CONTAINS RESTRICTED DATA AS DEFINED IN THE ATOMIC ENERGY ACT OF 1954. ITS TRANSMISSION OR THE DISSEMINATION OF ITS CONTENTS BY ANY MANNER OR BY ANY PERSON IS PROHIBITED BY LAW.

TITLE

VERTICAL BOWING MEASUREMENTS, F REACTOR

OTHER OFFICIAL CLASSIFIED INFORMATION

THIS MATERIAL CONTAINS INFORMATION AFFECTING THE NATIONAL DEFENSE OF THE UNITED STATES WITHIN THE MEANING OF THE ESPIONAGE LAWS, TITLE 18, U. S. C., SECS. 793 AND 794, THE TRANSMISSION OR REVELATION OF WHICH IN ANY MANNER TO AN UNAUTHORIZED PERSON IS PROHIBITED BY LAW.

AUTHOR

A. E. DeMers

H.E. Co.

CIRCULATING COPY
RECEIVED 300 AREA
JUL 27 1965
RETURN TO
TECHNICAL INFORMATION FILES

THIS DOCUMENT MUST NOT BE LEFT UNATTENDED OR WHERE AN UNAUTHORIZED PERSON MAY HAVE ACCESS TO IT. WHEN IN USE, IT MUST BE KEPT IN AN APPROVED LOCKED POSITORY WITHIN AN APPROVED GUARDED AREA WHILE IT IS BEING USED. IT IS YOUR RESPONSIBILITY TO KEEP IT SECURED FROM UNAUTHORIZED ACCESS. IT IS YOUR RESPONSIBILITY TO RETURN IT TO THE ISSUING OFFICE AT THE END OF YOUR USE. IT IS NOT TO BE REPRODUCED OR TRANSMITTED IN ANY MANNER WITHOUT THE WRITTEN PERMISSION OF THE ISSUING OFFICE. ADDITIONAL COPIES ARE AVAILABLE TO SIGN IN THE SPACE PROVIDED BELOW.

ROUTE TO:	PAYROLL NO.	LOCATION	FILES ROUTE DATE	SIGNATURE AND DATE
WC Morgan	30704	3701L	7/29/65	
D. E. Baker	30748	326	SEP 18 1967	
W. J. Gray	33550	326	JUN 22 1970	

(CLASSIFICATION)

DECLASSIFIED

DECLASSIFIED

RL-REA-2335

July 2, 1965

DISTRIBUTION

General Electric Company

- 1. WK Alexander
- 2. JH Ferguson/KW Powers
- 3. A Russell
- 4. RMO Files
- 5. Records Center

This Document Classified By:

JH Ferguson

DISCLAIMER

Battelle Northwest Laboratories

- 6. WC Morgan

This report was prepared as an account of work sponsored by an agency of the United States Government. Neither the United States Government nor any agency thereof, nor any of their employees, makes any warranty, express or implied, or assumes any legal liability or responsibility for the accuracy, completeness, or usefulness of any information, apparatus, product, or process disclosed, or represents that its use would not infringe privately owned rights. Reference herein to any specific commercial product, process, or service by trade name, trademark, manufacturer, or otherwise does not necessarily constitute or imply its endorsement, recommendation, or favoring by the United States Government or any agency thereof. The views and opinions of authors expressed herein do not necessarily state or reflect those of the United States Government or any agency thereof.

VERTICAL BOWING MEASUREMENTS, F REACTOR

A. E. DeMers

Classification Cancelled and Changed To

DECLASSIFIED

By Authority of DS Lewis
CG-NMP-1 4-29-94

By DL Hanson, 5-18-94

Verified By J E Savely 6-8-94

HANFORD ATOMIC PRODUCTS OPERATION
RICHLAND, WASHINGTON

NO DISTRIBUTION OF THIS DOCUMENT IS UNLIMITED

This report was prepared for use within General Electric Company in the course of work under Atomic Energy Commission Contract AT(45-1) - 1350, and any views or opinions expressed in the report are those of the author only. This report is subject to revision upon collection of additional data.

ya

LEGAL NOTICE

This report was prepared as an account of Government sponsored work. Neither the United States, nor the Commission, nor any person acting on behalf of the Commission:

A. Makes any warranty or representation, expressed or implied, with respect to the accuracy, completeness, or usefulness of the information contained in this report, or that the use of any information, apparatus, method, or process disclosed in this report may not infringe privately owned rights; or

B. Assumes any liabilities with respect to the use of, or for damages resulting from the use of any information, apparatus, method, or process disclosed in this report.

As used in the above, "person acting on behalf of the Commission" includes any employee or contractor of the Commission, or employee of such contractor, to the extent that such employee or contractor of the Commission, or employee of such contractor prepares, disseminates, or provides access to, any information pursuant to his employment or contract with the Commission, or his employment with such contractor.

MASTER

DECLASSIFIED

July 2, 1965

VERTICAL BOWING MEASUREMENTS, F REACTOR

<u>Distance From Inlet Flange</u>	<u>ΔHeight Tube 4676</u>	<u>Distance From Inlet Flange</u>	<u>ΔHeight Tube 4676</u>
18"	.00	15'	- 1.08
2'	+ .01	16'	- 1.26
3'	+ .02	17'	- 1.40
4'	+ .12	18'	- 1.52
5'	+ .32	19'	- 1.60
6'	+ .81	20'	- 1.59
7'	+ 1.40	21'	- 1.56
8'	+ 1.87	22'	- 1.51
8'4"	+ 2.01	23'	- 1.39
8'8"	+ 2.12	24'	- 1.17
8'10"	+ 2.16	25'	- .96
9'	+ 2.16	26'	- .72
9'2"	+ 2.16	27'	- .35
9'4"	+ 2.11	28'	+ .18
9'6"	+ 2.07	29'	+ .65
9'8"	+ 2.01	30'	+ 1.03
9'10"	+ 1.93	31'	+ 1.31
10'	+ 1.84	32'	+ 1.41
10'4"	+ 1.65	33'	+ 1.17
11'	+ 1.24	34'	+ .83
12'	+ .60	35'	+ .55
13'	- .02	36'	+ .30
14'	- .63		

A. P. DeMers
Irradiation Testing

AE DeMers:GPC:smc

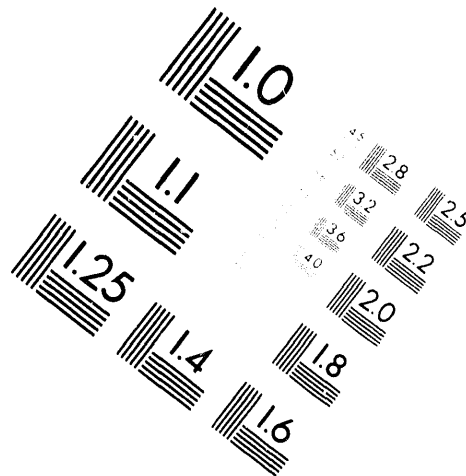
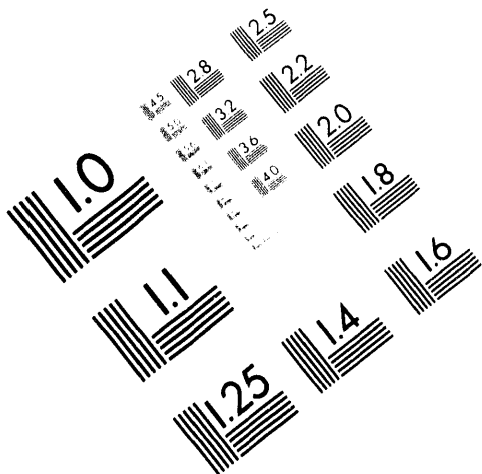
DECLASSIFIED



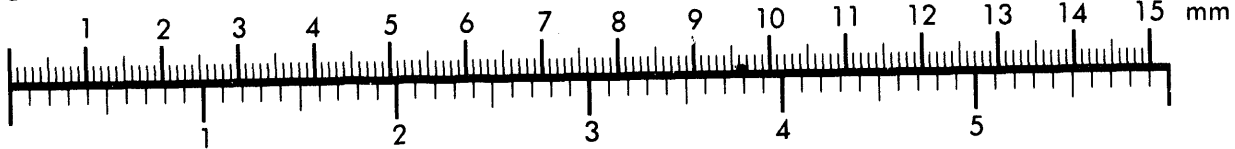
AIM

Association for Information and Image Management

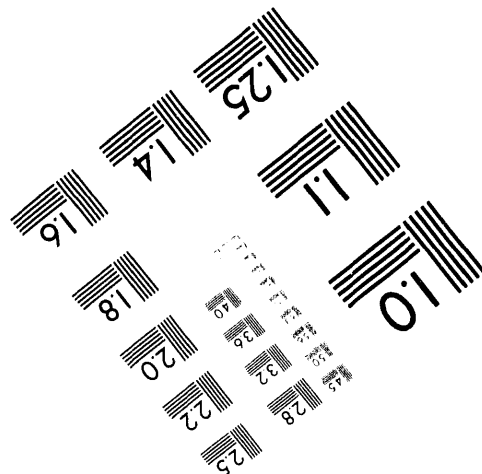
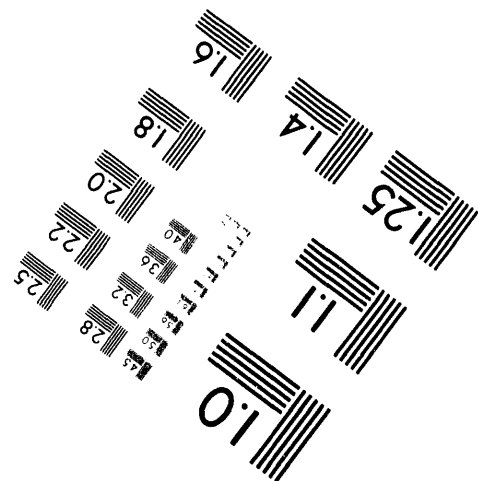
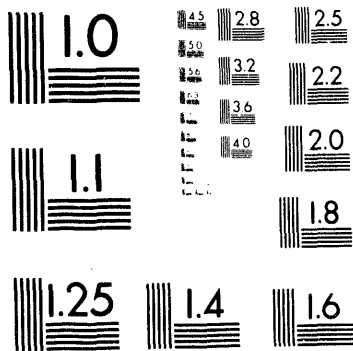
1100 Wayne Avenue, Suite 1100
Silver Spring, Maryland 20910
301/587-8202



Centimeter



Inches



MANUFACTURED TO AIM STANDARDS
BY APPLIED IMAGE, INC.

**DATE
FILMED**

11/25/94

END