

# The Portal to Texas History: Technology Overview

Mark Phillips  
Assistant Dean for Digital Libraries  
UNT Libraries  
December 11, 2012

## About the Portal

The Portal is a gateway to Texas history materials. You may discover anything from an ancestor's picture in a college yearbook to a rare historical map.

[Read More...](#)

## The Portal to Texas History



## Resources<sup>4</sup> Educators

We offer teaching materials that connect your students with primary source historical documents to dramatically enrich their learning.

[See all resources...](#)

## Statistics

Currently we have a total of **250,268** unique items, comprising **3.0 million** files. Over the last **34 days**, we've logged **462,732** uses of these items by people like you.

## Search within the The Portal to Texas History

**Everything** | [Books](#) | [Maps](#) | [Photos](#) | [Newspapers](#)

**More** ▾

fulltext



Submit

■ [Advanced Search](#)

■ [Search Help](#)

## Featured Collections



### University of North Texas Archives

The University of North Texas Archives collection features early images of North Texas State Normal College (now the University of North Texas), faculty and students. The Archives also contributed materials to the collection From Republic to State: Debates and Documents Relating to the Annexation of Texas, 1836-1856.

1 2 3 4 5

[More Collections...](#)

## Featured Partner

### Archives of the Central Texas Conference United Methodist Church

Archives of the Central Texas Conference United Methodist Church provides materials for *Where the West Begins: Capturing Fort Worth's Historic Treasures*. Photographs and archival documents, from as early as 1912, include portraits of staff and church events at Glen Lake and Rainbow Camp.

**Robust infrastructure for managing digital content**

A platform for institutions to deliver content to  
users around the world

Built using a simple data model

Digital object has descriptive metadata  
(locally qualified Dublin Core)

One or more manifestations

(think format, series of images, pdf, ppt)

Each manifestation has one or more file sets

(think page of a book)



Each file set has one or more files

(master, ocr, transcription, translation, thumbnail)

Objects modeled in python and serialized as  
METS records on the filesystem

Descriptive metadata is modeled as python object  
and serialized as XML

All digital items are stored as files on disk

Solr is used to index items

Two Solr indexes

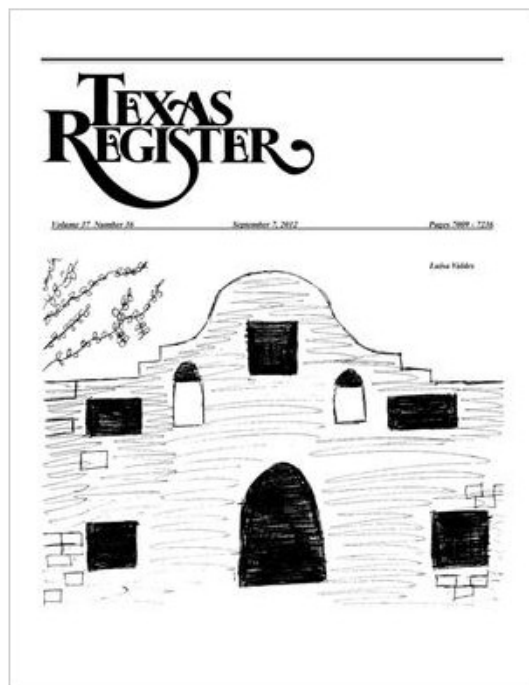
one for items and one for pages

Portal front end is a set of Django Web applications

ARKs for unique identifiers



## Texas Register, Volume 37, Number 36, Pages 7009-7236, September 7, 2012

[Brief Record](#)
[Full Record](#)
[Statistics](#)

**Description:**

A weekly publication, the Texas Register serves as the journal of state agency rulemaking for Texas. Information published in the Texas Register includes proposed, adopted, withdrawn and emergency rule actions, notices of state agency review of agency rules, governor's appointments, attorney general opinions, and miscellaneous documents such as requests for proposals. After adoption, these rulemaking actions are codified into the Texas Administrative Code.

**Creator(s):**

[Texas. Secretary of State.](#)

**Location(s):**

[United States - Texas](#)

**Creation Date:**

September 7, 2012

**Partner(s):**

UNT Libraries Government Documents Department  
[About](#) | [Browse this Partner](#)

**Collection(s):**

[Texas Register](#)  
[About](#) | [Browse this Collection](#)

**Usage:**

Total Uses: 198

**Search Inside**
 
[Return to Search Results](#)
[Citation](#)
[Metadata](#)
[Share](#)
[All Formats](#)
**More Options**
[All Pages](#)
**Resources<sup>4</sup> Educators**

We offer teaching materials that connect your students with primary source historical documents to dramatically enrich their learning. [See all resources.](#)

**Feedback:**

If you are having problems, need to report errors, or have questions or comments for

## Texas Register, Volume 37, Number 36, Pages 7009-7236, September 7, 2012

This item is available in multiple formats. Choose one below.



### Read this Book

Number of items: 225  
Filetype: tif (image)



### Download this Book

Number of items: 1  
Filetype: pdf (file)



### Download this Book

Number of items: 25  
Filetype: html (file)

### Search Inside

[Return to Search Results](#)

[Citation](#)

[Metadata](#)

[Share](#)

[All Formats](#)

### Resources<sup>4</sup> Educators

We offer teaching materials that connect your students with primary source historical documents to dramatically enrich their learning. [See all resources.](#)

### Feedback:

If you are having problems, need to report errors, or have questions or comments for the staff, please use our [Feedback Form](#).



## Texas Register, Volume 37, Number 36, Pages 7009-7236, September 7, 2012

Displaying page 1 of 3

[FIRST](#)
[PREV](#)
[1](#)
[2](#)
[3](#)
[NEXT](#)
[LAST](#)



Page: Title Page



Page: 7010



Page: 7011



Page: 7012



Page: 7013



Page: 7014



Page: 7015



Page: 7016



Page: 7017



Page: 7019



Page: 7020



Page: 7021



Page: 7022



Page: 7023



Page: 7024



Page: 7025



Page: 7026



Page: 7027



Page: 7028



Page: 7029

### Search Inside


[Return to Search Results](#)



[Citation](#)



[Metadata](#)



[Share](#)



[All Formats](#)

### More Options



[All Pages](#)

### Resources<sup>4</sup> Educators

We offer teaching materials that connect your students with primary source historical documents to dramatically enrich their learning. [See all resources.](#)

### Feedback:

If you are having problems, need to report errors, or have questions or comments for

[About this Book](#)[Download this File](#)[Other items in this serial \(2,980\)](#)

## Texas Register, Volume 37, Number 36, Pages 7009-7236, September 7, 2012

Filename	Size	Format	Download
0907is.pdf	3.8 MB	application/pdf	<a href="#">Download</a>

[Return to Search Results](#)[Citation](#)[Metadata](#)[Share](#)[All Formats](#)**Resources<sup>4</sup> Educators**

We offer teaching materials that connect your students with primary source historical documents to dramatically enrich their learning. [See all resources.](#)

**Feedback:**

If you are having problems, need to report errors, or have questions or comments for the staff, please use our [Feedback Form](#).





[About this Book](#)[Download this File](#)[Other Items in this series \(2,980\)](#)

## Texas Register, Volume 37, Number 36, Pages 7009-7236, September 7, 2012

Filename	Size	Format	Download
EMERGENCY/22.EXAMINING BOARDS.html	2.6 KB	text/html	<a href="#">Download</a>
GOVERNOR/GOVERNOR.html	6.1 KB	text/html	<a href="#">Download</a>
PROPOSED/1.ADMINISTRATION.html	10.9 KB	text/html	<a href="#">Download</a>
PROPOSED/16.ECONOMIC REGULATION.html	90.0 KB	text/html	<a href="#">Download</a>
PROPOSED/22.EXAMINING BOARDS.html	93.2 KB	text/html	<a href="#">Download</a>
PROPOSED/30.ENVIRONMENTAL QUALITY.html	18.8 KB	text/html	<a href="#">Download</a>
PROPOSED/40.SOCIAL SERVICES AND ASSISTANCE.html	180.5 KB	text/html	<a href="#">Download</a>
WITHDRAWN/37.PUBLIC SAFETY AND CORRECTIONS.html	1.9 KB	text/html	<a href="#">Download</a>
adopted/1.ADMINISTRATION.html	22.7 KB	text/html	<a href="#">Download</a>
adopted/16.ECONOMIC REGULATION.html	61.8 KB	text/html	<a href="#">Download</a>
adopted/19.EDUCATION.html	483.8 KB	text/html	<a href="#">Download</a>
adopted/22.EXAMINING BOARDS.html	39.3 KB	text/html	<a href="#">Download</a>
adopted/30.ENVIRONMENTAL QUALITY.html	50.3 KB	text/html	<a href="#">Download</a>
adopted/37.PUBLIC SAFETY AND CORRECTIONS.html	101.8 KB	text/html	<a href="#">Download</a>
in-addition/201204547-1.html	7.1 KB	text/html	<a href="#">Download</a>
in-addition/201204547-2.html	2.9 KB	text/html	<a href="#">Download</a>
in-addition/201204548-1.html	3.2 KB	text/html	<a href="#">Download</a>
in-addition/201204548-2.html	2.9 KB	text/html	<a href="#">Download</a>
in-addition/in-addition.html	136.8 KB	text/html	<a href="#">Download</a>
index.html	21.2 KB	text/html	<a href="#">Download</a>
rule-review/rule-review.html	4.2 KB	text/html	<a href="#">Download</a>
tables-and-graphics/201204442-1.pdf	15.9 KB	application/pdf	<a href="#">Download</a>
tables-and-graphics/201204490-1.html	1.9 KB	text/html	<a href="#">Download</a>

[Return to Search Results](#)[Citation](#)[Metadata](#)[Share](#)[All Formats](#)**More Options**[All Files](#)**Resources<sup>4</sup> Educators**

We offer teaching materials that connect your students with primary source historical documents to dramatically enrich their learning. [See all resources.](#)

**Feedback:**

If you are having problems, need to report errors, or have questions or comments for the staff, please use our [Feedback Form](#).

## Texas Register, Volume 37, Number 36, Pages 7009-7236, September 7, 2012

1 page hit in text for "*Forest Hill*"

Displaying page 1 of 1



Page: 7220

... **Forest Hill**, Docket No. 2011-1990-MSW-E on August 22, 2012 assessing \$10,500 in administrative penalties

### Search Inside

"Forest Hill"

Search



[Return to Search Results](#)



[Citation](#)



[Metadata](#)



[Share](#)



[All Formats](#)

### More Options



[All Pages](#)

### Resources<sup>4</sup> Educators

We offer teaching materials that connect your students with primary source historical documents to dramatically enrich their learning. [See all resources.](#)

### Feedback:

If you are having problems, need to report errors, or have questions or comments for

[About this Book](#)[Read this Book](#)[Page Hits \(1\)](#)[Other Items in this serial \(2,980\)](#)

## Texas Register, Volume 37, Number 36, Pages 7009-7236, September 7, 2012

[More Sizes](#)[Lower Lights](#)

Page:

7220



An agreed order was entered regarding Randy Scobee, Docket No. 2011-1958-PST-E on August 22, 2012 assessing \$13,600 in administrative penalties.

Information concerning any aspect of this order may be obtained by contacting Phillip M. Goodwin, P.G., Staff Attorney at (512) 239-3400, Texas Commission on Environmental Quality, P.O. Box 13087, Austin, Texas 78711-3087.

An agreed order was entered regarding City of Forest Hill, Docket No. 2011-1990-MSW-E on August 22, 2012 assessing \$10,500 in administrative penalties.

Information concerning any aspect of this order may be obtained by contacting Theresa Hagood, Enforcement Coordinator at (512) 239-2540, Texas Commission on Environmental Quality, P.O. Box 13087, Austin, Texas 78711-3087.

An agreed order was entered regarding CELINA SHELL FOOD MART, INC., Docket No. 2011-2023-PST-E on August 22, 2012 assessing \$39,573 in administrative penalties with \$7,914 deferred.

Information concerning any aspect of this order may be obtained by contacting Mike Pace, Enforcement Coordinator at (817) 588-5933, Texas Commission on Environmental Quality, P.O. Box 13087, Austin, Texas 78711-3087.

An agreed order was entered regarding City of Fort Worth, Docket No. 2011-2033-PST-E on August 22, 2012 assessing \$8,000 in administrative penalties with \$1,600 deferred.

Information concerning any aspect of this order may be obtained by contacting Jacquelyn Green, Enforcement Coordinator at (512) 239-2587, Texas Commission on Environmental Quality, P.O. Box 13087, Austin, Texas 78711-3087.

A default order was entered regarding James Barnes, Docket No. 2011-2039-MSW-E on August 22, 2012 assessing \$7,875 in administrative penalties.

Information concerning any aspect of this order may be obtained by contacting Phillip M. Goodwin, P.G., Staff Attorney at (512) 239-3400, Texas Commission on Environmental Quality, P.O. Box 13087, Austin, Texas 78711-3087.

A default order was entered regarding Marcial Hernandez, Docket No. 2011-2064-LI-E on August 22, 2012 assessing \$745 in administrative penalties.

Information concerning any aspect of this order may be obtained by contacting Mike Fishburn, Staff Attorney at (512) 239-3400, Texas Commission on Environmental Quality, P.O. Box 13087, Austin, Texas

An agreed order was entered regarding Eli Gravierel Sasson, Docket No. 2011-2292-MWD-E on August 22, 2012 assessing \$16,125 in administrative penalties with \$3,225 deferred.

Information concerning any aspect of this order may be obtained by contacting JR Cao, Enforcement Coordinator at (512) 239-2543, Texas Commission on Environmental Quality, P.O. Box 13087, Austin, Texas 78711-3087.

An agreed order was entered regarding Energy Corporation of America, Docket No. 2011-2327-AIR-E on August 22, 2012 assessing \$16,521 in administrative penalties with \$3,304 deferred.

Information concerning any aspect of this order may be obtained by contacting Trina Grieco, Enforcement Coordinator at (210) 403-4006, Texas Commission on Environmental Quality, P.O. Box 13087, Austin, Texas 78711-3087.

An agreed order was entered regarding Waller County Mobile Home Water Corporation, Docket No. 2012-0020-PWS-E on August 22, 2012 assessing \$117 in administrative penalties.

Information concerning any aspect of this order may be obtained by contacting Jorge Ibarra, P.E., Enforcement Coordinator at (817) 588-5890, Texas Commission on Environmental Quality, P.O. Box 13087, Austin, Texas 78711-3087.

An agreed order was entered regarding SAMROD CORPORATION dba Big D Travel Center, Docket No. 2012-0234-PST-E on August 22, 2012 assessing \$7,693 in administrative penalties with \$1,538 deferred.

Information concerning any aspect of this order may be obtained by contacting Brianna Carlson, Enforcement Coordinator at (956) 430-6021, Texas Commission on Environmental Quality, P.O. Box 13087, Austin, Texas 78711-3087.

An agreed order was entered regarding Nido, LTD dba Beck Landfill, Docket No. 2012-0292-MSW-E on August 22, 2012 assessing \$10,625 in administrative penalties with \$2,125 deferred.

Information concerning any aspect of this order may be obtained by contacting Brianna Carlson, Enforcement Coordinator at (956) 430-6021, Texas Commission on Environmental Quality, P.O. Box 13087, Austin, Texas 78711-3087.

An agreed order was entered regarding PL Propylene LLC, Docket No. 2012-0376-IWD-E on August 22, 2012 assessing \$18,000 in administrative penalties with \$3,600 deferred.

Information concerning any aspect of this order may be obtained by contacting Heather Brister, Enforcement Coordinator at (254) 761-3034, Texas Commission on Environmental Quality, P.O. Box

## Search Inside

[Return to Search Results](#)[Citation](#)[Metadata](#)[Share](#)[All Formats](#)

## More Options

[All Pages](#)[All Image Sizes](#)[Remove Highlighting](#)Resources<sup>4</sup> Educators

We offer teaching materials that connect your students with primary source historical documents to dramatically

## Texas Register, Volume 37, Number 36, Pages 7009-7236, September 7, 2012

## Citation

Texas. Secretary of State.. *Texas Register, Volume 37, Number 36, Pages 7009-7236, September 7, 2012*, Book, September 7, 2012; digital images, (<http://texashistory.unt.edu/ark:/67531/metaph253228/> : accessed December 10, 2012), University of North Texas Libraries, The Portal to Texas History, <http://texashistory.unt.edu>; crediting UNT Libraries Government Documents Department, Denton, Texas.

**Note:** Inconsistencies in capitalization and punctuation within the Portal may affect this citation. Before using this citation in formal writing, please consult your preferred style manual. [More information . . .](#)

## Search Inside

[Return to Search Results](#)[Citation](#)[Metadata](#)[Share](#)[All Formats](#)

## More Options

[All Pages](#)Resources<sup>4</sup> Educators

We offer teaching materials that connect your students with primary source historical documents to dramatically enrich their learning. [See all resources.](#)

## Feedback:

If you are having problems, need to report errors, or have questions or comments for



## Texas Register, Volume 37, Number 36, Pages 7009-7236, September 7, 2012

### Metadata

Metadata describes a digital item, providing (if known) such information as creator, publisher, contents, size, relationship to other resources, and more. Metadata may also contain "preservation" components that help us to maintain the integrity of digital files over time.

Metadata for this item is available in various machine-readable formats:

### Dublin Core

- [XML Format](#)
- [JSON Format](#)
- [Text Format](#)
- [RDF/XML Format](#)

### UNTL

- [XML Format](#)

### METS

- [XML Format](#)



### Search Inside

[Return to Search Results](#)[Citation](#)[Metadata](#)[Share](#)[All Formats](#)

### More Options

[All Pages](#)

### Resources<sup>4</sup> Educators

We offer teaching materials that connect your students with primary source historical documents to dramatically enrich their learning. [See all resources.](#)

### Feedback:

If you are having problems, need to report errors, or have questions or comments for

## Texas Register, Volume 37, Number 36, Pages 7009-7236, September 7, 2012

### Included in:

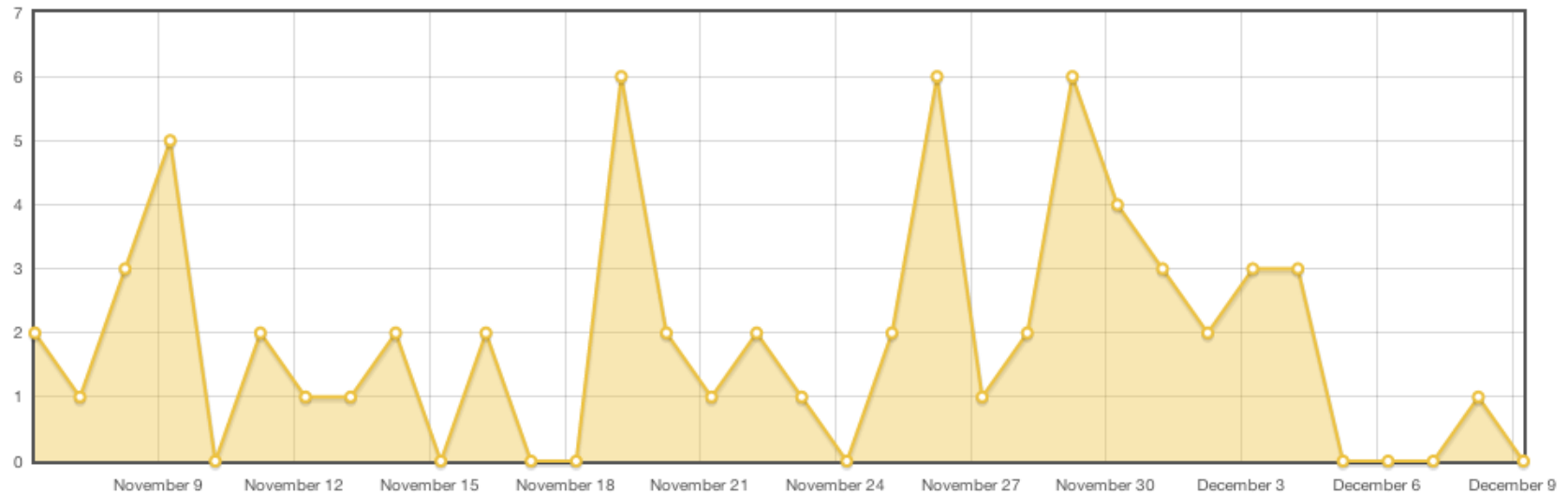
Partner(s): [UNT Libraries Government Documents Department](#)

Collection(s): [Texas Register](#)

Item Usage

Referrals

**198 Total Uses. / 53 in the last 34 days.**



### Item Usage by Month/Year

Year	January	February	March	April	May	June	July	August	September	October	November	December	Total
2012	0	0	0	0	0	0	0	0	26	102	58	12	198

# Sweetwater Reporter (Sweetwater, Tex.), Vol. 113, No. 189, Ed. 1 Thursday, June 23, 2011

Brief Record

Full Record

Statistics

Search Inside

sweetwater

Search



[Return to Search Results](#)



[Citation](#)



[Metadata](#)



[Share](#)

More Options



[All Pages](#)

Resources<sup>4</sup> Educators

We offer teaching materials that connect your students with primary source historical documents to dramatically enrich their learning. [See all resources.](#)

Feedback:

If you are having problems, need to report errors, or have questions or comments for the staff, please use our [Feedback Form](#).

Description:

Daily newspaper from Sweetwater, Texas that includes local, state, and national news along with advertising.

Creator(s):

Unknown

Location(s):

United States - Texas - Nolan County - Sweetwater

Creation Date:

June 23, 2011

Partner(s):

Sweetwater/Nolan County City-County Library  
[About](#) | [Browse this Partner](#)

Collection(s):

Texas Digital Newspaper Program  
[About](#) | [Browse this Collection](#)

Sweetwater Reporter  
[About](#) | [Browse this Collection](#)

Usage:

Total Uses: 17  
Past 30 days: 5  
Yesterday: 0



Sweetwater Reporter (Sweetwater, Tex.), Vol. 113, No. 189, Ed. 1 Thursday, June 23, 2011



Zoom (Full Page)



Lower Lights



Sequence:

1



CM K



Thursday, June 23, 2011

[www.sweetwaterreporter.com](http://www.sweetwaterreporter.com)

Vol. 113, Issue 189 ■ 50 cents

## Over 70,000 acres now burned



Currently, the Texas Forest Service is assisting local crews put out a handful of fires; two of the more noticeable are in Nolan County near Maryneal and Taylor County near Trent.

A fire blazing in Nolan County torched more than 70,500 acres as of Wednesday evening and is 65 percent contained. There are voluntary evacuations around the community of Maryneal. Eight homes, eight outbuildings and three vehicles were destroyed. A power substation received heavy damage, leaving many without power. Heavy air tankers and single-engine air tankers dropped on this fire. This fire is burning four miles south of Maryneal.

Crews are working not only to battle the blaze, but to restore power to residents in the communities of Maryneal and Nolan.

Residents in the two communities are without water and electricity after the fire knocked out power Monday.

"Our wells are pumped by electricity so we don't have water at our homes," said Maryneal resident Carol Higdon.

Many are taking shelter at the Maryneal Community Center, which is also serving as a makeshift command center for the Texas Forest Service.

TFS crews were initially unable to help fight the flames, as their resources are stretched thin all over the state.

Search Inside

sweetwater

Search

[Return to Search Results](#)[Citation](#)[Metadata](#)[Share](#)

More Options

[All Pages](#)[All Image Sizes](#)[Zoom \(Full Page\)](#)Resources<sup>4</sup> Educators

We offer teaching materials that connect your students with primary source historical documents to dramatically enrich their learning. [See all resources.](#)



with Dale Monroe and Jimmy Johns, (not  
Many livestock have already perished in

Photo by Lori Falcon



# SISD terminates 14 due to budget cuts

BY BELINDA SERRANO  
Staff Writer

The **Sweetwater** Independent School District (SISD) Board of Trustees met for its regular monthly meeting on Monday evening, June 20, 2011 at the Administration Building.

On the consent agenda, the board approved the minutes from the meeting held on May 16, the financial statements and bills from the previous month and the investment statement. Approval was also given to accept one of the three delinquent tax lot bids received by the board; the other two were denied as they did not meet the minimum requirement.

The PEPPSA Director contract was also approved by the board, as well as the proposed local policy changes for EHBB, which deals with the district's gifted and talented program.

The updates were prompted by some word changes in regards to testing and acceptance of students into **Sweetwater** ISD's gifted and talented program. The most notable change, presented by SISD Assistant Superintendent Kathy Smartt, was in regard to placement of transfer students.

Now, a student who was in a gifted and talented

[About this Map](#)[View this Map](#)[Other items in this series \(4,282\)](#)

## Antelope Creek Southeast Quadrangle

[Brief Record](#)[Full Record](#)[Location](#)[Statistics](#)**Description:**

Topographic map of a portion of Texas from the United States Geological Survey (USGS) project. The map includes towns, historic or notable sites, bodies of water, and other geologic features. Scale 1:24,000

**Creator(s):**

Geological Survey (U.S.)

**Location(s):**

United States - Texas - Throckmorton County

**Creation Date:**

1981

**Partner(s):**

UNT Libraries Government Documents Department  
[About](#) | [Browse this Partner](#)

**Collection(s):**

USGS Topographic Map Collection  
[About](#) | [Browse this Collection](#)

**Usage:**

Total Uses: 0  
Past 30 days: 0  
Yesterday: 0

[Return to Search Results](#)[Citation](#)[Metadata](#)[Share](#)[All Formats](#)**Resources<sup>4</sup> Educators**

We offer teaching materials that connect your students with primary source historical documents to dramatically enrich their learning. [See all resources.](#)

**Feedback:**

If you are having problems, need to report errors, or have questions or comments for the staff, please use our [Feedback Form](#).





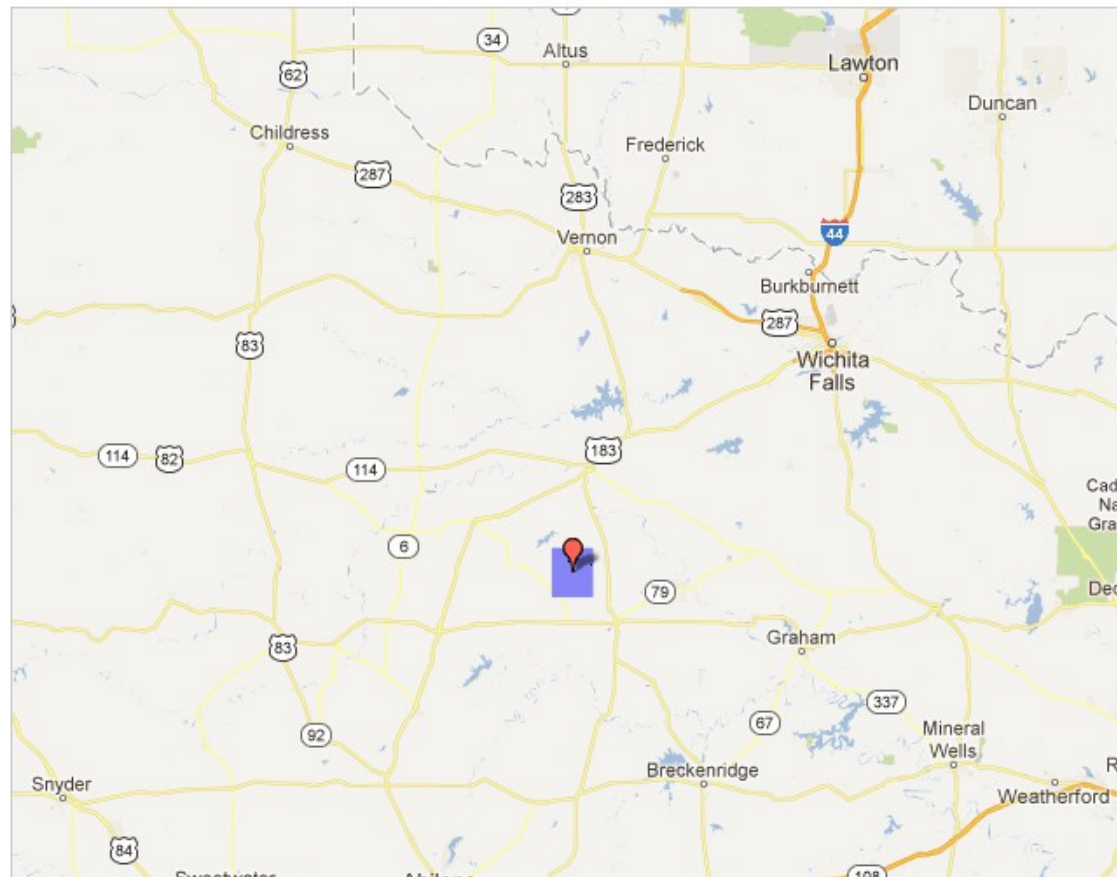
[About this Map](#)[View this Map](#)[Other items in this series \(4,282\)](#)

## Antelope Creek Southeast Quadrangle

[Brief Record](#)[Full Record](#)[Location](#)[Statistics](#)

**Point:** 33.31, -99.31

**Boundaries:** N:33.38, E:-99.25, S: 33.25, W-99.38

[Return to Search Results](#)[Citation](#)[Metadata](#)[Share](#)[All Formats](#)

### Resources<sup>4</sup> Educators

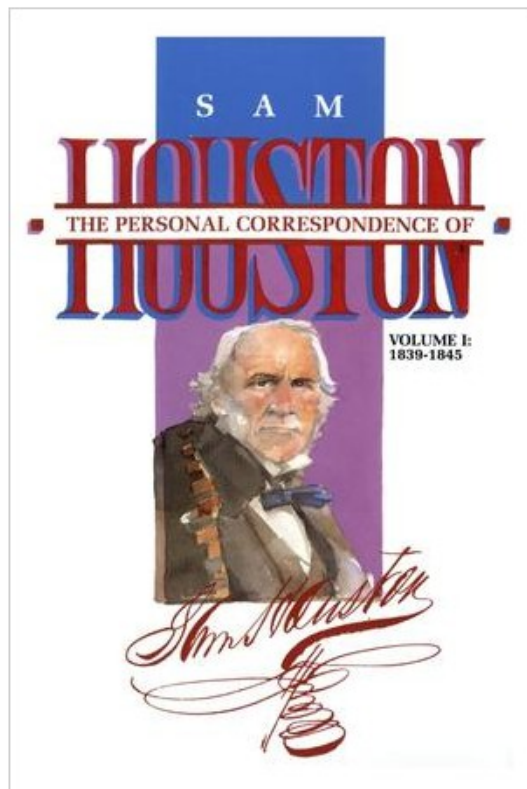
We offer teaching materials that connect your students with primary source historical documents to dramatically enrich their learning. [See all resources.](#)

### Feedback:

If you are having problems, need to report errors, or have questions or comments for the staff, please use our [Feedback Form](#).



## The Personal Correspondence of Sam Houston, Volume 1: 1839-1845

[Brief Record](#)[Full Record](#)[Statistics](#)**Description:**

This book is the first in a series of four volumes and contains collected correspondence to and from Sam Houston. According to information on the inside front cover, it includes letters "between Sam Houston and his wife, and their letters to other family members, family physicians, and close personal friends." The letters include footnotes that give clarification and context. The volume also has a bibliography, appendix, and index (which starts on page 377).

**Creator(s):**[Roberts, Madge Thornall](#)**Location(s):**[United States - Texas](#)**Creation Date:**

1996

**Partner(s):**[UNT Press](#)  
[About](#) | [Browse this Partner](#)**Collection(s):**[General Collection](#)  
[About](#) | [Browse this Collection](#)[Texas History Collection](#)  
[About](#) | [Browse this Collection](#)**Search Inside** [Get a Copy](#)[Citation](#)[Metadata](#)[Share](#)**More Options**[All Pages](#)**Resources<sup>4</sup> Educators**

We offer teaching materials that connect your students with primary source historical documents to dramatically enrich their learning. [See all resources.](#)

**Feedback:**

If you are having problems, need to report errors, or have questions or comments for the staff, please use our [Feedback Form](#).





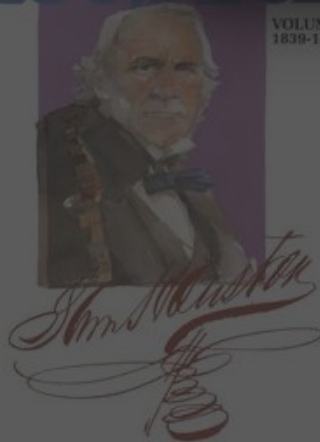
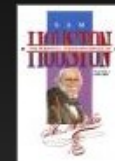
## The Personal Correspondence of Sam Houston, Volume 1: 1839-1845

Brief Record

Full Record

# SAM HOUSTON

## THE PERSONAL CORRESPONDENCE OF SAM HOUSTON, VOLUME 1: 1839-1845

VOLUME 1:  
1839-1845

### The Personal Correspondence of Sam Houston, Volume 1: 1839-1845

**Texas A&M University Press Consortium**

(Distributor for UNT Press books)

[Get a Copy](#)

Hardcover

**Barnes and Noble**

[Get a Copy](#)

Hardcover

To obtain a copy, you must use a 3rd party site. Links will open in a new window

give clarification and context. The volume also has a bibliography, appendix, and index (which starts on page 377).

**Creator(s):** Roberts, Madge Thornall

**Location(s):** United States - Texas

**Creation Date:** 1996

**Partner(s):** UNT Press  
[About](#) | [Browse this Partner](#)

**Collection(s):** General Collection  
[About](#) | [Browse this Collection](#)

Texas History Collection  
[About](#) | [Browse this Collection](#)

[+ Share](#)

**More Options**

[All Pages](#)

#### Resources<sup>4</sup> Educators

We offer teaching materials that connect your students with primary source historical documents to dramatically enrich their learning. [See all resources.](#)

#### Feedback:

If you are having problems, need to report errors, or have questions or comments for the staff, please use our [Feedback Form](#).

# People and Machines

Embedded RDFa

```
<!-- Dublin Core MetaData -->
<link rel="schema.DC" href="http://purl.org/dc/elements/1.1/" />

<meta property="dc:publisher" name="DC.publisher" content="Office of the Secretary of State" />

<meta property="dc:description" name="DC.description" content="A weekly publication, the Texas Register serves as the journal of state
agency rulemaking for Texas. Information published in the Texas Register includes proposed, adopted, withdrawn and emergency rule actions,
notices of state agency review of agency rules, governor's appointments, attorney general opinions, and miscellaneous documents such as
requests for proposals. After adoption, these rulemaking actions are codified into the Texas Administrative Code." />

<meta property="dc:format" name="DC.format" content="1 v. ; 28 cm." />

<meta property="dc:language" name="DC.language" content="English" />

<meta property="dc:creator" name="DC.creator" content="Texas. Secretary of State." />

<meta property="dc:type" name="DC.type" content="Book" />

<meta property="dc:format" name="DC.format" content="Text" />

<meta property="dc:title" name="DC.title" content="Texas Register, Volume 37, Number 36, Pages 7009-7236, September 7, 2012" />

<meta property="dc:title" name="DC.title" content="Texas Register" />

<meta property="dc:coverage" name="DC.coverage" content="United States - Texas" />

<meta property="dc:coverage" name="DC.coverage" content="2012-09" />

<meta property="dc:date" name="DC.date" content="2012-09-07" />

<meta property="dc:identifier" name="DC.identifier" content="oclc: 2309724" />

<meta property="dc:identifier" name="DC.identifier" content="issn: 0362-4781" />

<meta property="dc:subject" name="DC.subject" content="regulations" />

<meta property="dc:subject" name="DC.subject" content="laws" />

<meta property="dc:subject" name="DC.subject" content="Government and Law - Texas Laws and Regulations" />

<meta property="dc:subject" name="DC.subject" content="Texas -- Politics and government -- Handbooks, manuals, etc." />

<meta property="dc:subject" name="DC.subject" content="Delegated legislation -- Texas -- Periodicals." />

<meta property="dc:subject" name="DC.subject" content="Texas -- Politics and government -- Periodicals." />

<meta property="dc:identifier" name="DC.identifier" content="http://texashistory.unt.edu/ark:/67531/metapht253228/" />

<meta property="dc:identifier" name="DC.identifier" content="ark: ark:/67531/metapht253228" />
```

# Open Graph Metadata

<!-- Opengraph Data -->

<meta property="og:image" content="http://texashistory.unt.edu/ark:/67531/metapth253228/thumbnail/" />

<meta property="og:site\_name" content="The Portal to Texas History" />

<meta property="og:description" content="A weekly publication, the Texas Register serves as the journal of state agency rulemaking for Texas. Information published in the Texas Register includes proposed, adopted, withdrawn and emergency rule actions, notices of state agency review of agency rules, governor's appointments, attorney general opinions, and miscellaneous documents such as requests for proposals. After adoption, these rulemaking actions are codified into the Texas Administrative Code." />

<meta property="og:title" content="Texas Register, Volume 37, Number 36, Pages 7009-7236, September 7, 2012" />

Citation metadata

```
<!-- Highwire MetaData -->
```

```
<meta name="citation_publisher" content="Office of the Secretary of State" />
```

```
<meta name="citation_online_date" content="09/13/2012" />
```

```
<meta name="citation_publication_date" content="09/07/2012" />
```

```
<meta name="citation_issn" content="0362-4781" />
```

```
<meta name="citation_title" content="Texas Register, Volume 37, Number 36, Pages 7009-7236, September 7, 2012" />
```

```
<meta name="citation_pdf_url" content="http://texashistory.unt.edu/ark:/67531/metapth253228/m2/1/high_res_d/0907is.pdf">
```



Linked metadata

```
<link rel="alternate" type="application/rdf+xml" href="/ark:/67531/metapth253228/metadata.dc.rdf" />
  <link rel="alternate" type="application/untl+xml" href="/ark:/67531/metapth253228/metadata.untl.xml" />
  <link rel="alternate" type="application/oai_dc+xml" href="/ark:/67531/metapth253228/metadata.dc.xml" />
  <link rel="alternate" type="application/mets+xml" href="/ark:/67531/metapth253228/metadata.mets.xml" />
```

Browse by Location

### Help with Exploring

To find items about, or located in, a specific county, click on any blue-colored county on the map. Darker shaded counties have more items available. You can also browse a List of Texas Counties, other U.S. States, and other countries.

[See all Exploring FAQs](#)

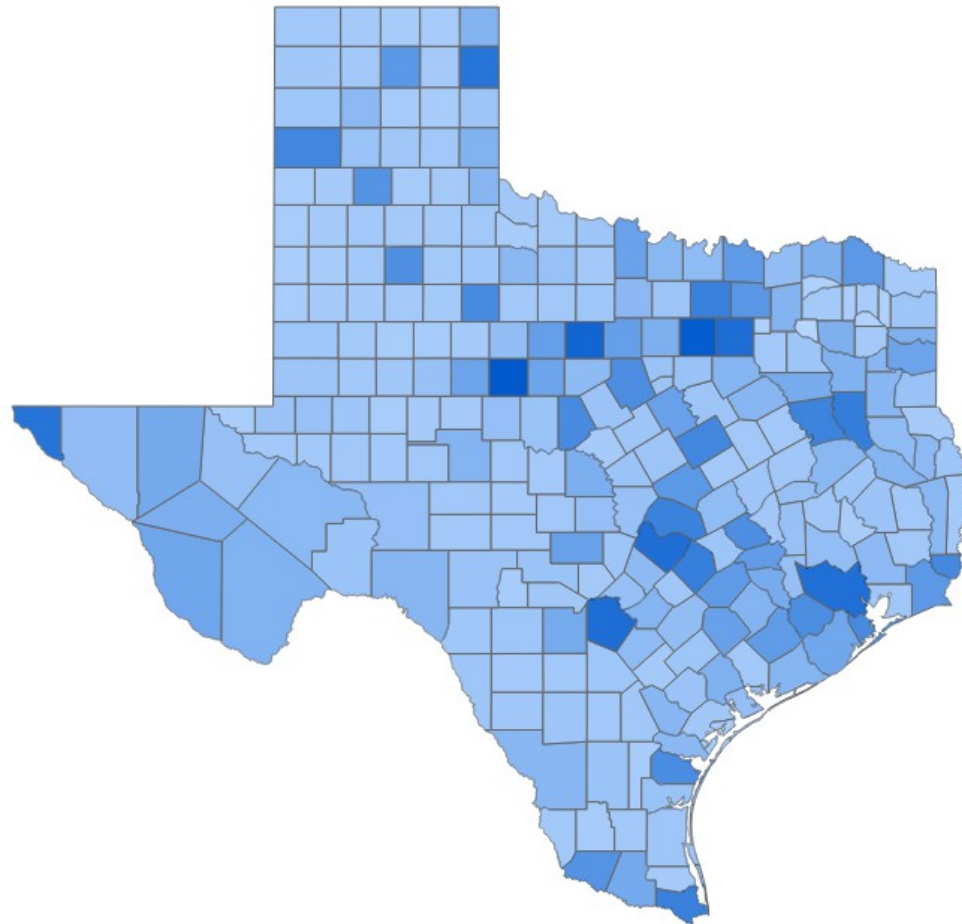
[See all Exploring Help Guides](#)

### Resources<sup>4</sup> Educators

We offer teaching materials that connect your students with primary source historical documents to dramatically enrich their learning.

[See all Resources](#)

## Explore by Locations

[Texas Map](#)[List of Texas Counties](#)[Other U.S. States](#)[Other Countries](#)

### Contact Us

For questions regarding content on this site, contact us: [feedback](#).

Hosted by [The University of North Texas Libraries](#)

Site last updated on Monday, Dec 03, 2012

### Technical problems?

For problems regarding this web site, contact us [feedback](#).

### Rights Information

[Terms of Use](#)

### Links

[Disclaimer](#) | [AA/EOE/ADA](#) | [Privacy Statement](#) | [Web Accessibility Policy](#) | [State of Texas Online](#)

### Help with Exploring

To find items about, or located in, a specific county, click on any blue-colored county on the map. Darker shaded counties have more items available. You can also browse a List of Texas Counties, other U.S. States, and other countries.

[See all Exploring FAQs](#)

[See all Exploring Help Guides](#)

### Resources<sup>4</sup> Educators

We offer teaching materials that connect your students with primary source historical documents to dramatically enrich their learning.

[See all Resources](#)

## Explore by Locations

[Texas Map](#)[List of Texas Counties](#)[Other U.S. States](#)[Other Countries](#)

### Other U.S. States

[Alabama](#) 63 items[Alaska](#) 23 items[Arizona](#) 81 items[Arkansas](#) 281 items[California](#) 273 items[Colorado](#) 291 items[Connecticut](#) 39 items[Delaware](#) 17 items[Florida](#) 115 items[Georgia](#) 67 items[Hawaii](#) 26 items[Idaho](#) 25 items[Illinois](#) 237 items[Indiana](#) 115 items[Iowa](#) 75 items[Montana](#) 35 items[Nebraska](#) 159 items[Nevada](#) 57 items[New Hampshire](#) 9 items[New Jersey](#) 109 items[New Mexico](#) 395 items[New York](#) 310 items[North Carolina](#) 53 items[North Dakota](#) 33 items[Ohio](#) 102 items[Oklahoma](#) 470 items[Oregon](#) 82 items[Pennsylvania](#) 200 items[Rhode Island](#) 23 items[South Carolina](#) 60 items

### Help with Exploring

To find items about, or located in, a specific county, click on any blue-colored county on the map. Darker shaded counties have more items available. You can also browse a List of Texas Counties, other U.S. States, and other countries.

[See all Exploring FAQs](#)

[See all Exploring Help Guides](#)

### Resources<sup>4</sup> Educators

We offer teaching materials that connect your students with primary source historical documents to dramatically enrich their learning.

[See all Resources](#)

## Explore by Locations

[Texas Map](#)[List of Texas Counties](#)[Other U.S. States](#)[Other Countries](#)

### Other Countries

[Antarctica](#) 13 items[Argentina](#) 13 items[Armenia](#) 1 item[Australia](#) 5 items[Austria](#) 6 items[Belgium](#) 38 items[Belize](#) 31 items[Bolivia](#) 4 items[Brazil](#) 15 items[Canada](#) 288 items[Chile](#) 14 items[China](#) 23 items[Colombia](#) 10 items[Costa Rica](#) 41 items[Cuba](#) 114 items[Kiribati](#) 7 items[Marshall Islands](#) 1 item[Mexico](#) 1,749 items[Mongolia](#) 5 items[Morocco](#) 8 items[Nepal](#) 1 item[Netherlands](#) 14 items[New Zealand](#) 2 items[Nicaragua](#) 36 items[North Korea](#) 4 items[Northern Mariana Islands](#) 13 items[Pakistan](#) 1 item[Palau](#) 1 item[Panama](#) 47 items[Papua New Guinea](#) 4 items

Browse by Subject

## Help with Exploring

Selecting one of these broad subject areas will allow you to see at a glance the related materials we have in the Portal.

[See all Exploring FAQs](#)

[See all Exploring Help Guides](#)

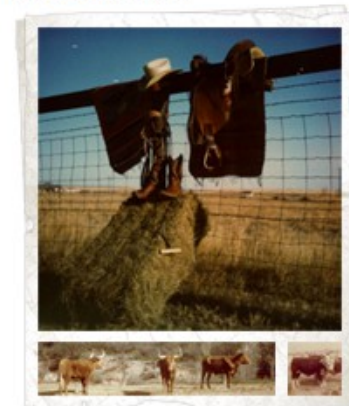
## Resources<sup>4</sup> Educators

We offer teaching materials that connect your students with primary source historical documents to dramatically enrich their learning.

[See all Resources](#)

## Explore by Subjects

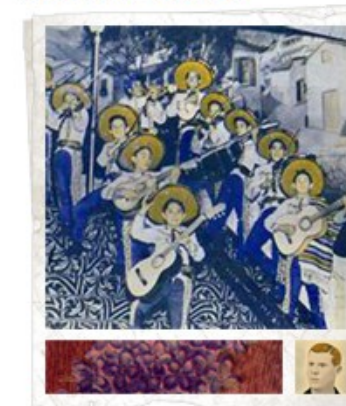
### AGRICULTURE



### ARCHITECTURE



### ARTS AND CRAFTS



### BUSINESS, ECONOMICS, AND FINANCE



### EDUCATION



### GOVERNMENT AND LAW



### IMMIGRATION

### LANDSCAPE AND NATURE

### LITERATURE



Browse by Date

## Help with Exploring

Browse materials by selecting one of these time periods significant in Texas history. The themes covered may cause some time periods to overlap. You can also create your own date range to explore items about, or created in, a particular era.

[See all Exploring FAQs](#)

[See all Exploring Help Guides](#)

## Resources<sup>4</sup> Educators

We offer teaching materials that connect your students with primary source historical documents to dramatically enrich their learning.

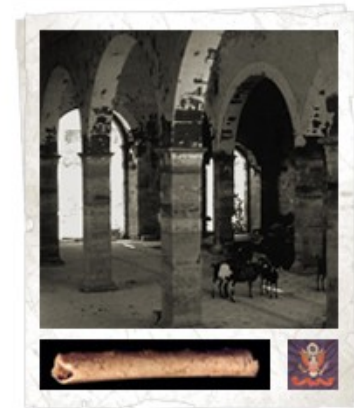
[See all Resources](#)

## Explore by Dates

Explore by Dates Range

Choose Your Own Dates

### THE FIRST TEXANS, BEFORE 1519



### EUROPEAN EXPLORERS IN TEXAS, 1519-1689



### SPANISH TEXAS, 1690-1821



### MEXICAN TEXAS, 1821-1835



### SLAVERY AND ANTEBELLUM TEXAS CULTURE, 1821-1865



### THE TEXAS REVOLUTION, 1835-1836



Browse by Type

## Help with Exploring

Use this feature to explore materials in the Portal by publication types such as books, maps, letters, photographs, newspapers, and more.

[See all Exploring FAQs](#)

[See all Exploring Help Guides](#)

## Resources<sup>4</sup> Educators

We offer teaching materials that connect your students with primary source historical documents to dramatically enrich their learning.

[See all Resources](#)

## Explore by Types

### ARTICLES



### ARTWORKS



### BOOKS



### CLIPPINGS



### IMAGES



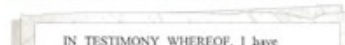
### JOURNALS, MAGAZINES, NEWSLETTERS



### LEGAL DOCUMENTS



### LEGISLATIVE DOCUMENTS



### LETTERS



# Collection and Partner interfaces



## Texas Digital Newspaper Program

[Everything](#) | [Books](#) | [Maps](#) | [Photos](#) | [Newspapers](#)

More ▾

fulltext



Submit

[Advanced Search](#)[Search Help](#)[+ Share](#) [Feed](#) [Stats](#) [API](#)

### What's Inside this Collection.



The Texas Digital Newspaper Program coordinates with multiple partners, including public libraries, publishers, historical and genealogical societies, and universities, to represent and preserve Texas history through digitized newspapers. This collection begins with pages from 1829 and continues through the present.

A large portion of the newspaper content in this collection comes from the generous support of the National Endowment for the Humanities' National Digital Newspaper Program, and the rest of the content is digitized through the active support of individual groups interested in preserving and providing access to community newspapers from across Texas. Because a newspaper depicts its community's identity over time, the Texas Digital Newspaper Program adheres to strict standards to preserve and make available all of these newspapers in perpetuity.

Learn more about the [Texas Digital Newspaper Program](#).

[Browse the holdings of this collection](#)

#### Latest Additions

#### Contributors



The Dallas Daily Herald. (Dallas, Tex.), Vol. 1, No. 220, Ed. 1 Saturday, October 25, 1873

**Added:** 12/03/2012



The Dallas Daily Herald. (Dallas, Tex.), Vol. 1, No. 225, Ed. 1 Friday, October 31, 1873

**Added:** 12/03/2012



The Dallas Daily Herald. (Dallas, Tex.), Vol. 1, No. 222, Ed. 1 Tuesday, October 28, 1873

**Added:** 12/03/2012



The Dallas Daily Herald. (Dallas, Tex.), Vol. 1, No. 219, Ed. 1 Friday, October 24, 1873

## Partner:

- ✦ UNT Libraries (31,505)
- ✦ The Dolph Briscoe Center for American History (12,999)
- ✦ Breckenridge Public Library (11,914)
- ✦ Bastrop Public Library (4,634)
- ✦ Abilene Christian University Library (3,461)
- ✦ More...

## Resource Type:

- ✦ Newspaper (112,885)
- ✦ Journal/Magazine/Newsletter (12)
- ✦ Clipping (1)

## County:

- ✦ Stephens County, TX (11,914)
- ✦ Taylor County, TX (7,914)
- ✦ Harris County, TX (7,732)
- ✦ El Paso County, TX (6,761)
- ✦ Cherokee County, TX (4,915)
- ✦ More...

## Decade:

## Search Inside the Texas Digital Newspaper Program

**Everything** | [Books](#) | [Maps](#) | [Photos](#) | [Newspapers](#)

**More** ▾

fulltext

▾

Submit

■ [Advanced Search](#)

■ [Search Help](#)



**You limited your search to:**



**Collection:** Texas Digital Newspaper Program

Results 1 - 10 of 112,898



Sort by: **Date Created (Oldest)** ▾



## The Texas Gazette. (San Felipe de Austin, Tex.), Vol. 1, No. 1, Ed. 1, Friday, September 25, 1829

**Date:** September 25, 1829

**Creator:** Cotten, Godwin Brown

**Description:** Weekly newspaper from the Austin, Texas area that includes local, state and national news along with advertising.

**Contributing Partner:** The Dolph Briscoe Center for American History



## The Texas Gazette. (San Felipe de Austin, Tex.) Saturday, October 24, 1829

**Date:** October 24, 1829

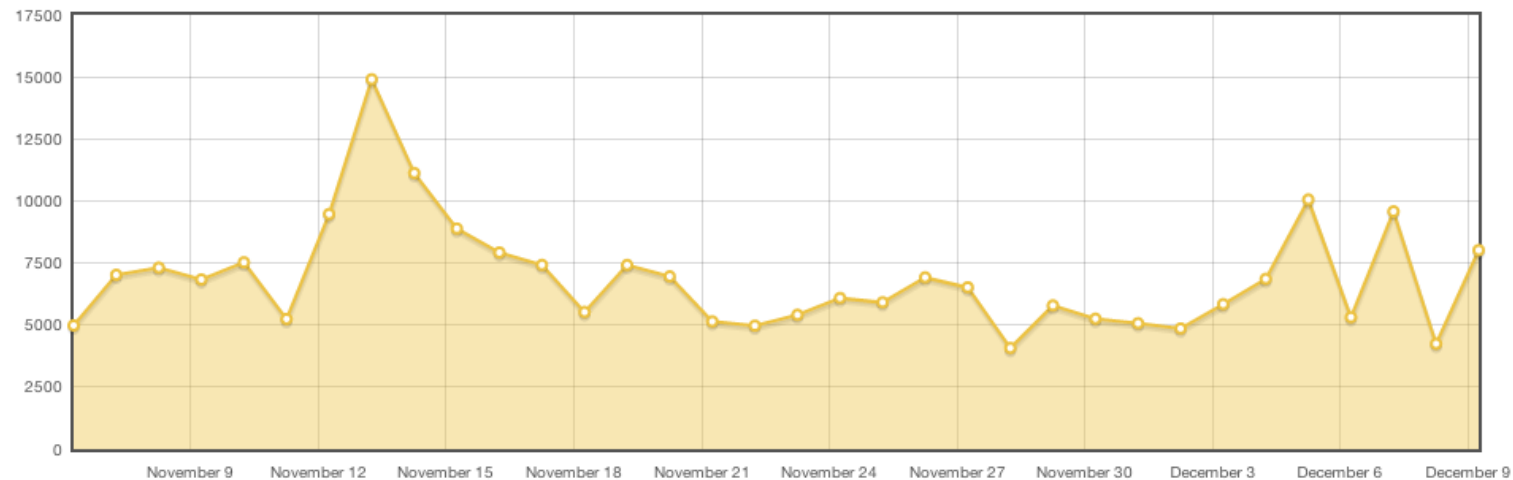
**Creator:** Cotten, Godwin Brown

**Description:** Weekly newspaper from the Austin, Texas area that includes local, state and national news along with advertising.

**Contributing Partner:** The Dolph Briscoe Center for American History

## Statistics for Texas Digital Newspaper Program

Item Usage

[More Data](#)**2,456,613** Total Uses / **113,404** Total Items (916,090 files) / **112,898** Visible / **506** Hidden

## Usage by Month/Year

Year	January	February	March	April	May	June	July	August	September	October	November	December	Total
2012	109,225	106,035	117,329	124,214	112,802	113,189	139,030	130,802	136,328	164,379	201,137	59,845	1,514,315
2011	36,983	41,626	34,802	36,070	36,739	35,884	47,272	47,164	58,449	67,582	75,419	86,971	604,961
2010	7,674	10,153	17,732	11,324	20,788	16,378	32,143	32,947	26,148	37,454	63,092	33,591	309,424
2009	0	0	0	0	0	671	2,477	1,134	1,991	7,581	8,651	5,408	27,913

## Contact Us

For questions regarding content on this site, contact us: [feedback](#).

Hosted by [The University of North Texas Libraries](#)

Site last updated on Monday, Dec 03, 2012

## Technical problems?

For problems regarding this web site, contact us [feedback](#).

## Rights Information

[Terms of Use](#)

## Links

[Disclaimer](#) | [AA/EOE/ADA](#) | [Privacy Statement](#) | [Web Accessibility Policy](#) | [State of Texas Online](#)



## On this Page

[Introduction](#)[The API](#)[OAI-PMH](#)[SRU](#)[OpenSearch](#)[Thumbnails](#)[Identifiers](#)

## APIs for Texas Digital Newspaper Program

### Introduction

The The Portal to Texas History provides public access to number of application programming interfaces (APIs) to the collections within the system. Below are examples of APIs available for Texas Digital Newspaper Program that can be used openly by those interested in programatically accessing data from this system. You do not need to apply for a special key to use these APIs.

For additional information about these APIs or if you have general questions about machine interaction with the The Portal to Texas History please contact [Mark Phillips](#).

Note that all example URLs below use the same protocol and server name, <http://texashistory.unt.edu/explore/collections/TDNP/>. We only show the URL paths and parameters below to save space.

### The API

#### OAI-PMH

The Open Archives Initiative's Protocol for Metadata Harvesting (OAI-PMH) allows programatic access to this collection's metadata. Two metadata formats are currently supported, the standard oai\_dc and the UNT Libraries native metadata format untl.

Below are example URLs which demonstrate some of the standard views of this OAI-PMH repository:

- [oai/](#)  
base URL for OAI-PMH repository
- [oai/?verb=Identify](#)  
Display information about this repository
- [oai/?verb=ListMetadataFormats](#)  
List available metadata formats
- [oai/?verb=ListSets](#)  
List available sets
- [oai/?verb=ListRecords&metadataPrefix=oai\\_dc](#)  
Display records in the oai\_dc metadata format
- [oai/?verb=ListRecords&metadataPrefix=untl](#)  
Display records in the untl metadata format

#### SRU

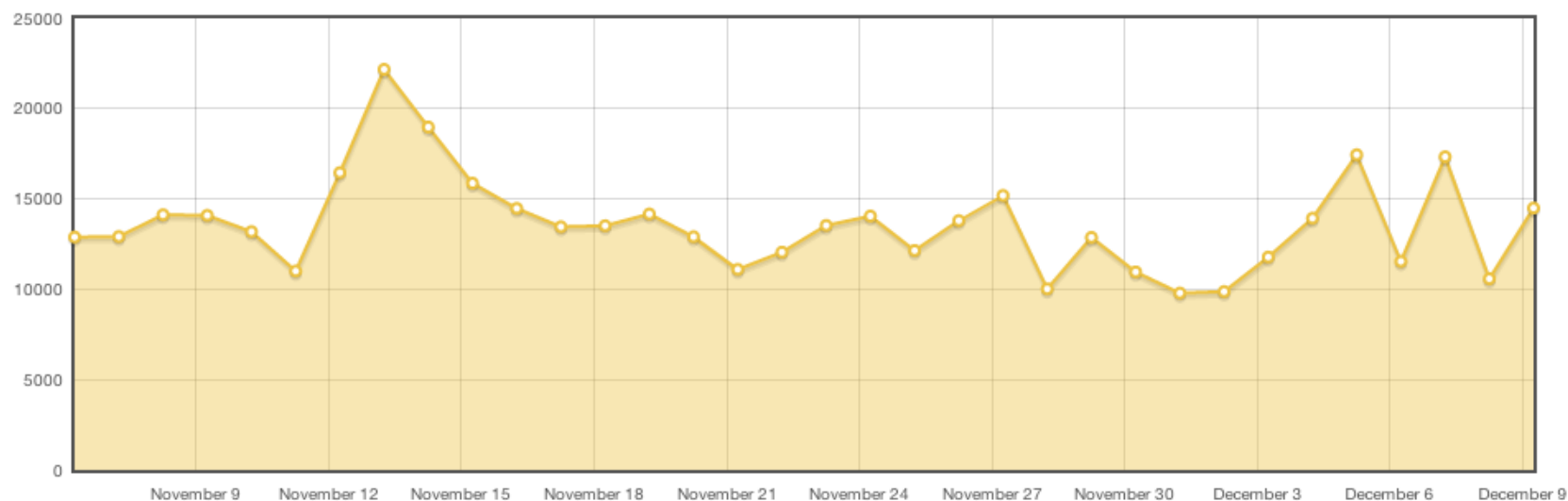
Portal wide stats

## Statistics for The Portal to Texas History

Item Usage

Items Added

More Data

**7,014,116** Total Uses / **462,732** in the last 34 days.

## Usage by Month/Year

Year	January	February	March	April	May	June	July	August	September	October	November	December	Total
2012	268,704	266,320	275,395	281,556	300,698	311,250	336,397	329,023	311,750	390,110	408,369	116,782	3,596,354
2011	116,398	114,725	109,243	129,659	122,038	135,553	147,172	157,068	171,787	190,046	209,417	215,020	1,818,126
2010	81,410	72,908	86,253	71,105	111,223	70,888	96,092	99,778	95,947	94,215	135,654	111,593	1,127,066
2009	0	0	0	0	0	17,692	57,967	27,072	56,286	94,454	147,640	71,459	472,570

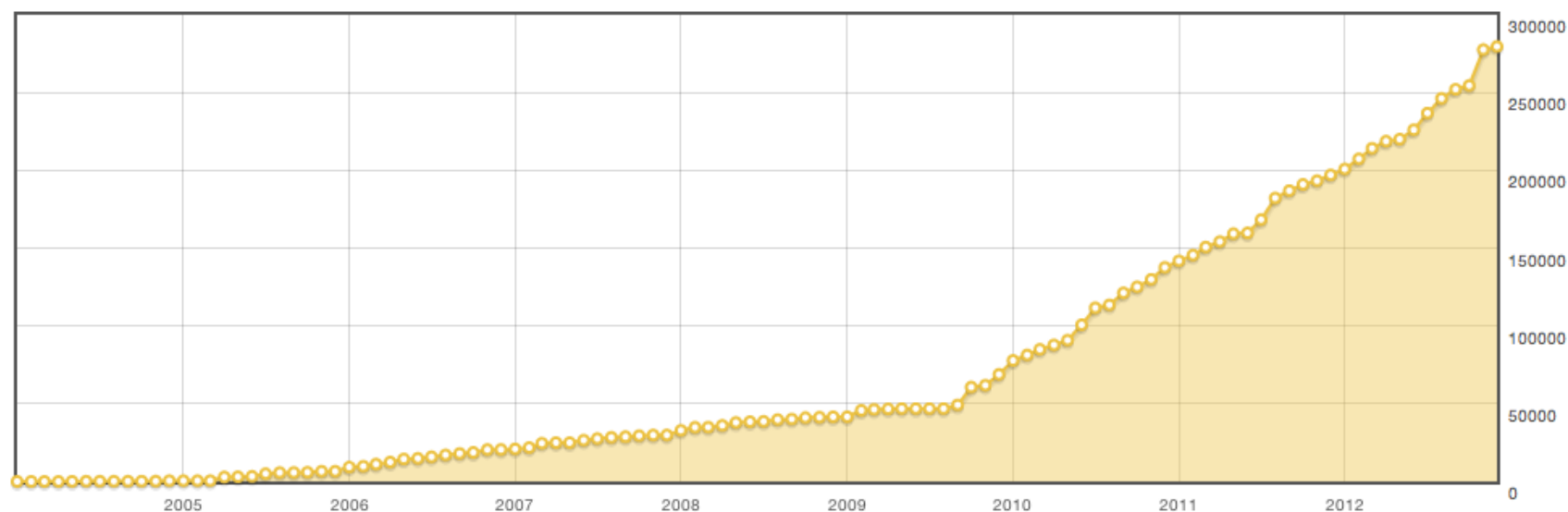
## Statistics for The Portal to Texas History

Item Usage

Items Added

More Data

Items added between January 2004 and December 2012

**279,632** Total Items (3,023,173 Files) / **250,268** Visible Items / **29,364** Hidden Items

Item Added by Month/Year

Year	January	February	March	April	May	June	July	August	September	October	November	December	Total
2012	3,771	6,581	6,752	4,564	1,315	6,023	10,732	9,426	5,901	2,427	23,056	2,011	82,559
2011	4,224	3,713	5,146	3,494	5,116	503	8,547	13,884	4,721	4,008	2,365	3,755	59,476

# Accompanying Systems

# Controlled Vocabularies

## Controlled Vocabularies: Home

Name	Label	Definition
<a href="#">agent-qualifiers</a>	Creator/Contributor Role	Creator/Contributor role indicates the relationship of that person or corporate body to the resource being described. N.B. Except where specified in the "Notes", Creator/Contributor roles and definitions for the roles come from the Library of Congress's MARC Code Lists for Relators, Sources, Description Conventions: <a href="http://www.loc.gov/marc/relators/relahome.html">http://www.loc.gov/marc/relators/relahome.html</a>
<a href="#">agent-type</a>	Creator Type	Agent or creator type categorizes whether the creator name belongs to an individual, an organization, an event, or a software.
<a href="#">citationQualifiers</a>	Citation Qualifiers	Qualifiers for the UNTL Citation metadata field.
<a href="#">collections</a>	Collection	The term collection means that the resource is described as a group; its parts may also be separately described and navigated. Collection name refers to a larger group of resources with a unique collective title to which the resource being described belongs. We added a filed "system" for each collection term with a value of either "pth" for the Portal to Texas History, or "dc" for UNT Digital Collections. The highlights of the PTH Collections can be viewed at: <a href="http://texashistory.unt.edu/browse/?browseby=collection">http://texashistory.unt.edu/browse/?browseby=collection</a> . Similarly, the highlights of the UNT Digital Collections can be viewed at: <a href="http://www.library.unt.edu/libraries-and-collections/digital-collections">http://www.library.unt.edu/libraries-and-collections/digital-collections</a> .
<a href="#">coverage-eras</a>	Coverage Time Period	Coverage time periods refer to time periods that are covered and/or discussed in the intellectual content of the resource, not the creation (publication) date.
<a href="#">coverage-qualifiers</a>	Coverage Type	Coverage is the extent or scope of the content of the resource. It will typically include spatial location (a place name or geographic coordinates) and a temporal period (a period label, date, or date range).
<a href="#">date-qualifiers</a>	Date	Dates associated with events in the life cycle of the resource.
<a href="#">degree-information</a>	Degree Information	Degree information provides detail information associated with the work as it appears within the work.
<a href="#">degree-levels</a>	Degree Level	Degree level refers to level of education associated with the document.
<a href="#">description-qualifiers</a>	Description	Both content and physical descriptions of the resource.
<a href="#">eventOutcomes</a>	Event Outcomes	
<a href="#">formats</a>	Format	Format is the structural type of the digital manifestation.
<a href="#">identifier-qualifiers</a>	Identifier Type	Identifier type refers to a formal identifier for a resource that identifies it uniquely and persistently.
<a href="#">institutions</a>	Institution	Institution is a consistent reference to the administrative unit that owns the digital resource for which metadata was created (currently for the Portal to Texas History).
<a href="#">languages</a>	Language	Language refers to the language of the intellectual content of the resource. This will be the language in which a text is written or the spoken language of an audio or video. Visual images normally do not have a language unless there is significant text in a caption or in the image itself.
<a href="#">linkingAgentRoles</a>	Linking Roles Agent	Agent roles used in the creation of Premis events.
<a href="#">meta-qualifiers</a>	Qualifiers for UNTL element meta	Qualifier types for the meta element in the UNTL metadata format.
<a href="#">note-qualifiers</a>	Note Types	Qualifiers used by UNTL metadata format for the note element.
<a href="#">preservationEvents</a>	Preservation Events	Preservation events are actions performed on digital objects within a preservation repository. Mostly lifted from <a href="http://id.loc.gov/vocabulary/preservationEvents.html">http://id.loc.gov/vocabulary/preservationEvents.html</a> Maintained as a separate list for easier migration forward.
<a href="#">publication-types</a>	Degree	- This vocabulary refers to a type of ETD produced by students in the degree seeking process.

[home](#) | [about](#)

## Controlled Vocabularies: Collection

Display as: [xml](#) | [tkl](#) | [py](#) | [json](#)

<b>Term Name: AFWC</b>	
URI:	<a href="http://purl.org/NET/UNTL/vocabularies/collections/#AFWC">http://purl.org/NET/UNTL/vocabularies/collections/#AFWC</a>
Label:	A. F. Weaver Collection
Description:	This colorful panorama covers the founding of Mineral Wells through its mercurial growth as a resort center and army town up to the present. A. F. Weaver was a photographer and local historian, and the collection includes photographs that he took as well as photographs he copied from local families and established research sources.
System:	pth
<b>Term Name: ACUC</b>	
URI:	<a href="http://purl.org/NET/UNTL/vocabularies/collections/#ACUC">http://purl.org/NET/UNTL/vocabularies/collections/#ACUC</a>
Label:	Abilene Christian University Catalogs
System:	pth
Description:	The catalogs and bulletins of Abilene Christian University span the years of 1906 to 2000. They describe the governance, history, course offerings, and campus life of Abilene Christian University in Abilene, Texas.
<b>Term Name: ACUY</b>	
URI:	<a href="http://purl.org/NET/UNTL/vocabularies/collections/#ACUY">http://purl.org/NET/UNTL/vocabularies/collections/#ACUY</a>
Label:	Abilene Christian University Yearbooks
System:	pth
Description:	The Abilene Christian University Yearbooks collection features issues of the Prickly Pear from 1916 through 2007, and include text and photographs about students, professors, sports, and organizations. Notable alumni include Texas Supreme Court Chief Justice Jack Pope, Olympic sprinter Bobby Morrow, Pulitzer prize winning photographer David Leeson, and inspirational author Max Lucado.
<b>Term Name: ABCM</b>	
URI:	<a href="http://purl.org/NET/UNTL/vocabularies/collections/#ABCM">http://purl.org/NET/UNTL/vocabularies/collections/#ABCM</a>
Label:	Abilene Library Consortium
System:	pth
<b>Term Name: ABPHC</b>	
URI:	<a href="http://purl.org/NET/UNTL/vocabularies/collections/#ABPHC">http://purl.org/NET/UNTL/vocabularies/collections/#ABPHC</a>
Label:	Abilene Photograph Collection
Description:	The Abilene Photograph Collection consists of over 10,000 images that range from the early twentieth century to the present. The collection has a delightful assortment of images of community members, homes, businesses, churches and ranches. The collection details Abilene's rich history, capturing a multitude of public events in Abilene and surrounding areas.
System:	pth
<b>Term Name: ACIR</b>	
URI:	<a href="http://purl.org/NET/UNTL/vocabularies/collections/#ACIR">http://purl.org/NET/UNTL/vocabularies/collections/#ACIR</a>
Label:	Advisory Commission on Intergovernmental Relations
System:	dc



# Metadata Workflow

login

Username:

mphillips

Password:

.....

Login

**Please note:** your browser must have cookies enabled and support javascript in order for this application to work. Supported/Tested browsers include Internet Explorer 8 and 9, The latest build of Firefox (7.x), and Chrome for Windows. Older versions of Firefox to 3.x are probably fine as well, though untested at this time. IE users should consider [Google's Chrome Frame](#) for a more well-tested experience, however.

## Collections

- ✦ [Texas Digital Newspaper Program \(113,404\)](#)
- ✦ [Tocker Foundation Grant \(31,332\)](#)
- ✦ [Texas Attorney General Opinions \(19,865\)](#)
- ✦ [Texas Cultures Online \(13,497\)](#)
- ✦ [Early Texas Newspapers \(12,999\)](#)
- ✦ [More...](#)

## Partners

- ✦ [UNT Libraries Government Documents Department \(44,992\)](#)
- ✦ [UNT Libraries \(34,324\)](#)
- ✦ [The Dolph Briscoe Center for American History \(15,933\)](#)
- ✦ [UNT Archives \(14,801\)](#)
- ✦ [Hardin-Simmons University Library \(13,873\)](#)
- ✦ [More...](#)

## Resource Types

- ✦ [Newspaper \(113,397\)](#)
- ✦ [Photograph \(85,777\)](#)
- ✦ [Text \(26,544\)](#)
- ✦ [Map \(14,410\)](#)
- ✦ [Legislative Document \(7,159\)](#)
- ✦ [More...](#)

## Search

Search for

in the

metadata

field

Search

Clear

Displaying 1 - 40 of 279,632 items

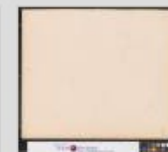
List



Grid



Title

[00-063](#)[00-128](#)[00-146](#)[00-163](#)[00-167](#)[00-178](#)[00-188](#)[00-251](#)[00-253](#)[00-273](#)[00-277](#)[00-282](#)[00-321](#)[00-404](#)[00-462](#)[00-483](#)

TITLE

The name given to the resource [More...](#)

title:

Main Title ▾

00-128



CREATOR

The person, agency, or organization primarily responsible for creating the intellectual content of the resource [More...](#)

name:

The name of a person, organization, or event (conference, meeting, etc.) associated in some way with the resource

type:

Used to designate if a creator is an individual or an organization

Select a value ▾

role:

The role that the person or organization played in the creation of the item

Select a value ▾

Info:

Additional information about the creator related to the specific item



CONTRIBUTOR

The name of a person or organization that has played an important but secondary role in creating the content of the resource and is not specified in the creator element [More...](#)

name:

The name of a person, organization, or event (conference, meeting, etc.) associated in some way with the resource

type:

Used to designate if a contributor is an individual or an organization

Select a value ▾



Publish

Save

Record Visibility  
☒ Hide this record  
☐ Show this record

- |                    |                   |
|--------------------|-------------------|
| Title [1]          | Citation [0]      |
| Creator [0]        | Relation [0]      |
| Contributor [0]    | Collection [1]    |
| Publisher [0]      | Institution [1]   |
| Date [0]           | Rights [0]        |
| Language [1]       | Resource Type [1] |
| Description [2]    | Format [1]        |
| Subject [2]        | Identifier [1]    |
| Primary Source [1] | Degree [0]        |
| Coverage [0]       | Note [2]          |
| Source [0]         | Meta [5]          |

Collapse All Fields

## COVERAGE

*Geographic region, historic era, and specific date or range of dates covered by the resource content*

[More...](#)

**coverage:**

Place Name

## SOURCE

*Information about a resource or event from which the resource was derived*

**source:**

Select a value

## CITATION

*Citation information related to the source item*

**citation:**

Select a value

## RELATION

*Information about another resource that is related to the current resource*

[More...](#)

**relation:**

Select a value

### Place Name



Texas

Start typing the place name and the system will offer suggestions from places that have been used previously. Either choose the correct location from the suggestion list or add a new place name using appropriate formatting. To insert the value, click on "Insert" or use tab, then enter. Clicking the "x" in the upper-right corner closes the search box without entering a place name.

Insert

## Tools



Publish

Save

Record Visibility

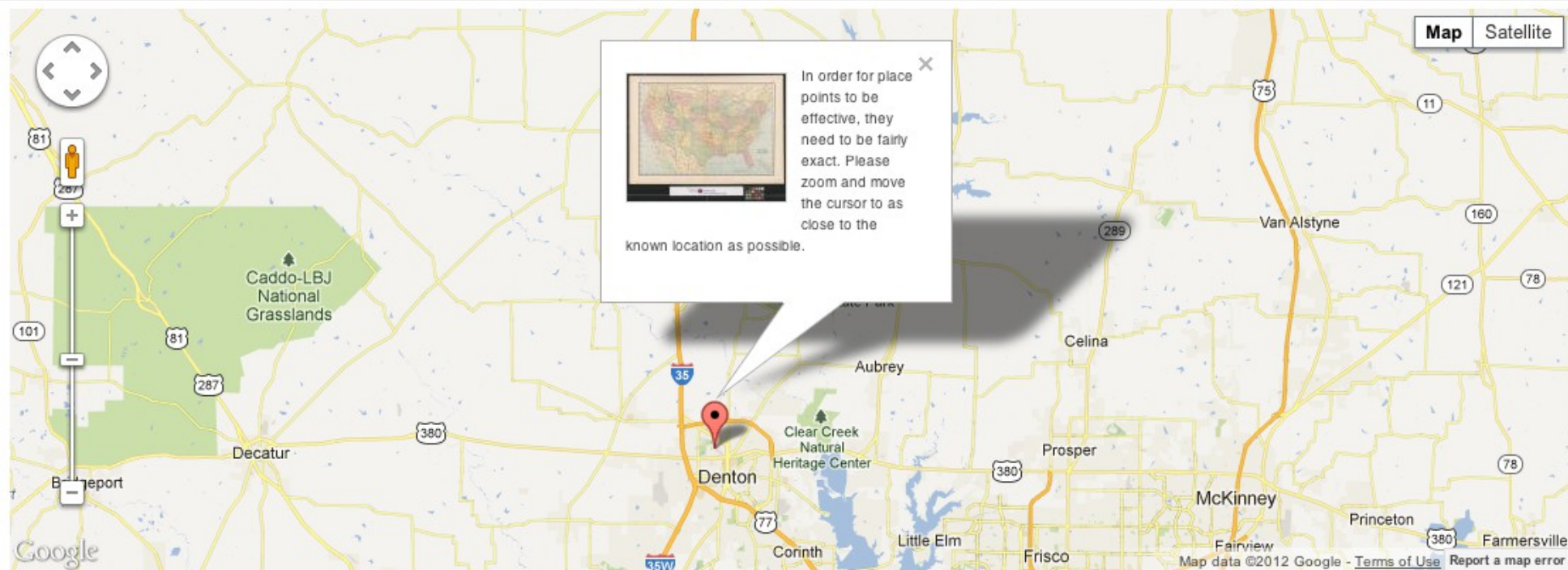
- ☒ Hide this record  
☐ Show this record

Title [1]	Citation [0]
Creator [0]	Relation [0]
Contributor [0]	Collection [1]
Publisher [0]	Institution [1]
Date [0]	Rights [0]
Language [1]	Resource Type [1]
Description [2]	Format [1]
Subject [2]	Identifier [1]
Primary Source [1]	Degree [0]
Coverage [0]	Note [2]
Source [0]	Meta [5]

Collapse All Fields



## Geographic Data



### search for a location

Denton, TX, USA

**Start typing** a location name and select the applicable result from the autocomplete.

**Valid searches include:** addresses, intersections, political entities such as cities, counties, states, etc, neighborhoods, postal codes, natural features, parks, and points of interest. Some businesses and other named places may appear in results as well. Data for remote & non-US locations is likely incomplete, however you can search using localized/non-English names as well.

**Once selected,** the map will pan/zoom to approximately where you want to go. Please note that the position and zoom-level are close approximations, and that when placing a marker or boxes, you will need to manually pan/zoom the map to position the box or

### Drop a Marker

**You marker** will be centered to the map above.

**You can drag the marker** around as needed and the coordinates will update accordingly. Double click the marker or [this link](#) to clear it from the map.

**When you are satisfied** about the marker's placement, click "Insert" below to add the values to the metadata entry form.

Insert

Goal: Provide a platform for partners to deliver their digital content to a wide set of users

Create a robust infrastructure based on standards  
and best practices for the Web.



<http://texashistory.unt.edu/>