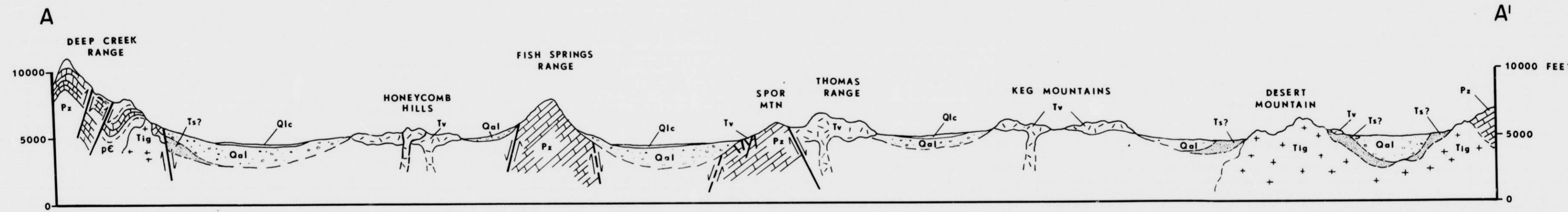


Topography from Delta, Utah 2° AMS sheet; Geology from Stokes (1962) and Hintze (1963)



EXPLANATION

- | | | |
|-----------------------|-----|---|
| QUATERNARY | Qlc | Lacustrine clays, silts; may include playa lake brines |
| | Qal | Colluvium and alluvium; terrace gravels, sands; may include locally derived arkoses, Ts (?) |
| TERTIARY | Tv | Volcanic flows, agglomerates, tuffs, tuffaceous sands and conglomerates |
| | Tig | Intrusive granitoid rocks |
| PRECAMBRIAN PALEOZOIC | Pz | Limestones, dolomites, quartzites, minor shales |
| | Pc | Schists, argillites, quartzites |

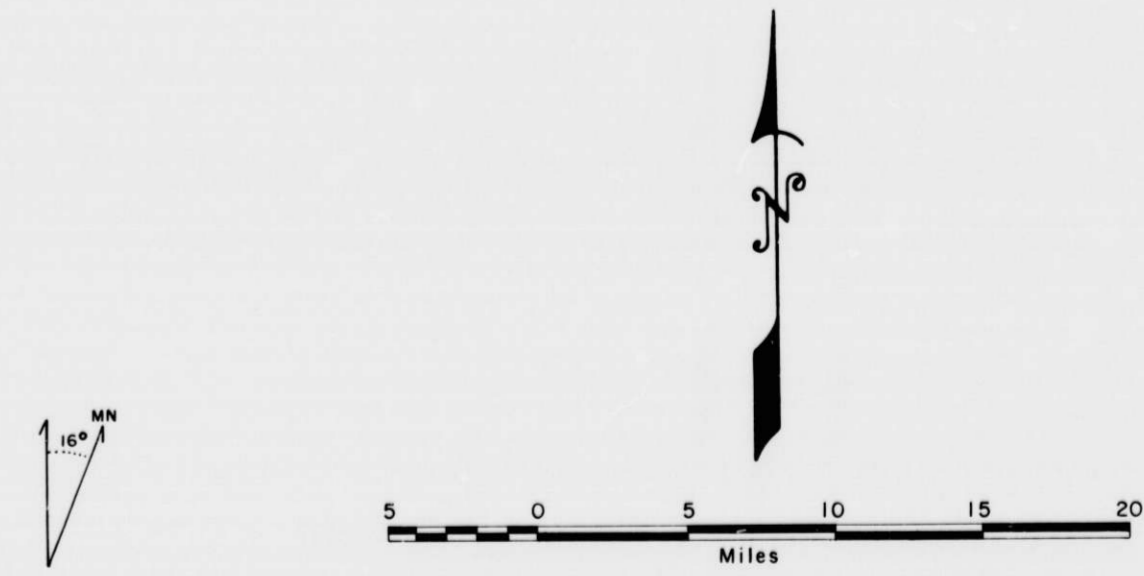


PLATE I. GEOLOGIC MAP AND CROSS SECTION OF JUAB COUNTY, UTAH

G5BX-23(78)

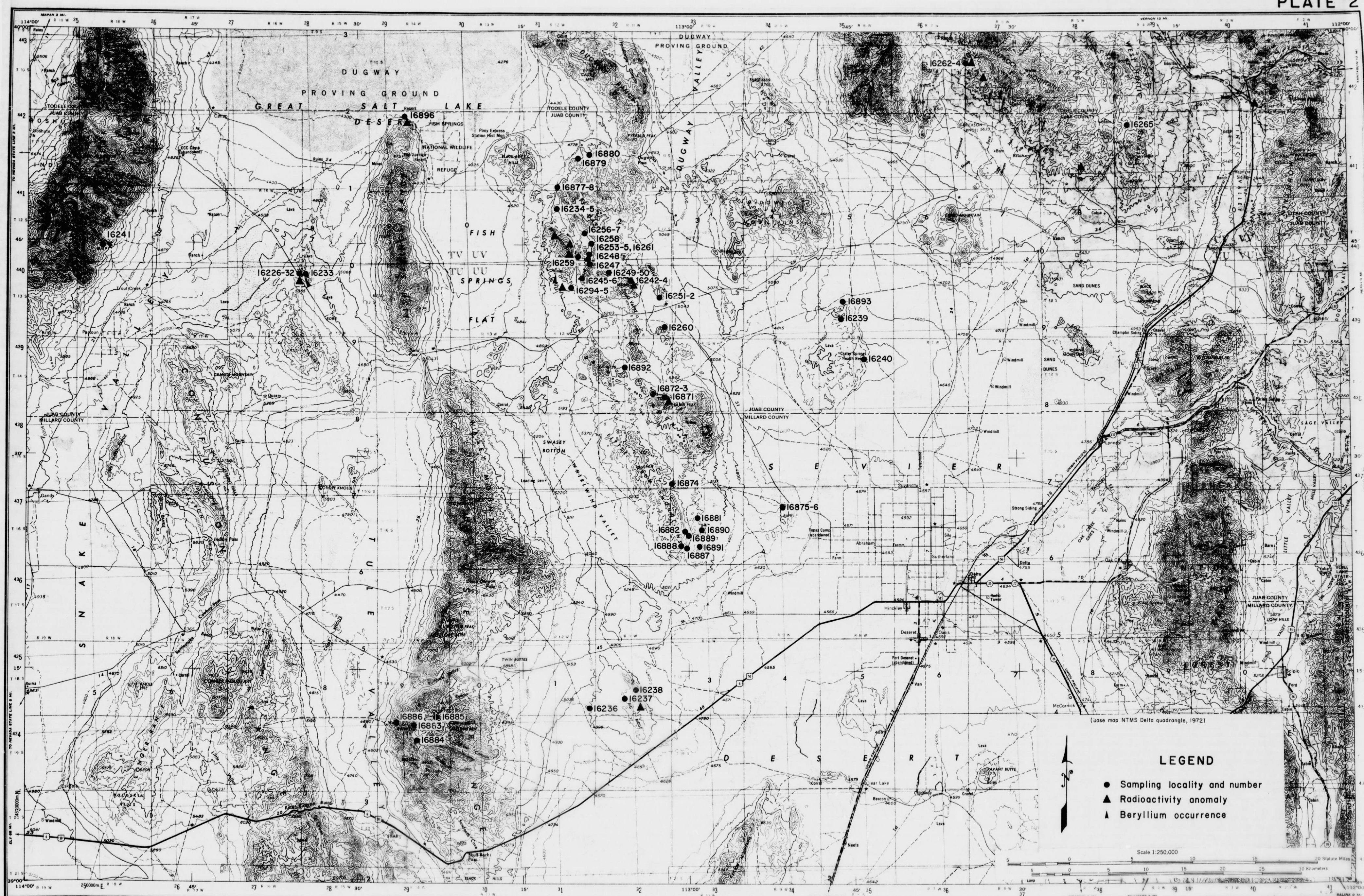


PLATE 2. SAMPLE SITES, RADIOACTIVITY ANOMALIES, AND BERYLLIUM OCCURRENCES

GSBX-23(78)