

10.25

MASTER

UNITED STATES DEPARTMENT OF THE INTERIOR

GEOLOGICAL SURVEY

Rad 8-3-78

Telluric traverse location map and profiles
for Double Hot Springs Known Geothermal
Resource Area, Nevada

By

R. M. Senterfit, D. B. Hoover, and K. Christopherson

Open-File Report 78-106A

1978

This report is preliminary and has not been
edited or reviewed for conformity with U.S.
Geological Survey standards and nomenclature.

EW-78-X-05-1684

DISTRIBUTION OF THIS DOCUMENT IS UNLIMITED

Handwritten signature

DISCLAIMER

This report was prepared as an account of work sponsored by an agency of the United States Government. Neither the United States Government nor any agency Thereof, nor any of their employees, makes any warranty, express or implied, or assumes any legal liability or responsibility for the accuracy, completeness, or usefulness of any information, apparatus, product, or process disclosed, or represents that its use would not infringe privately owned rights. Reference herein to any specific commercial product, process, or service by trade name, trademark, manufacturer, or otherwise does not necessarily constitute or imply its endorsement, recommendation, or favoring by the United States Government or any agency thereof. The views and opinions of authors expressed herein do not necessarily state or reflect those of the United States Government or any agency thereof.

DISCLAIMER

Portions of this document may be illegible in electronic image products. Images are produced from the best available original document.

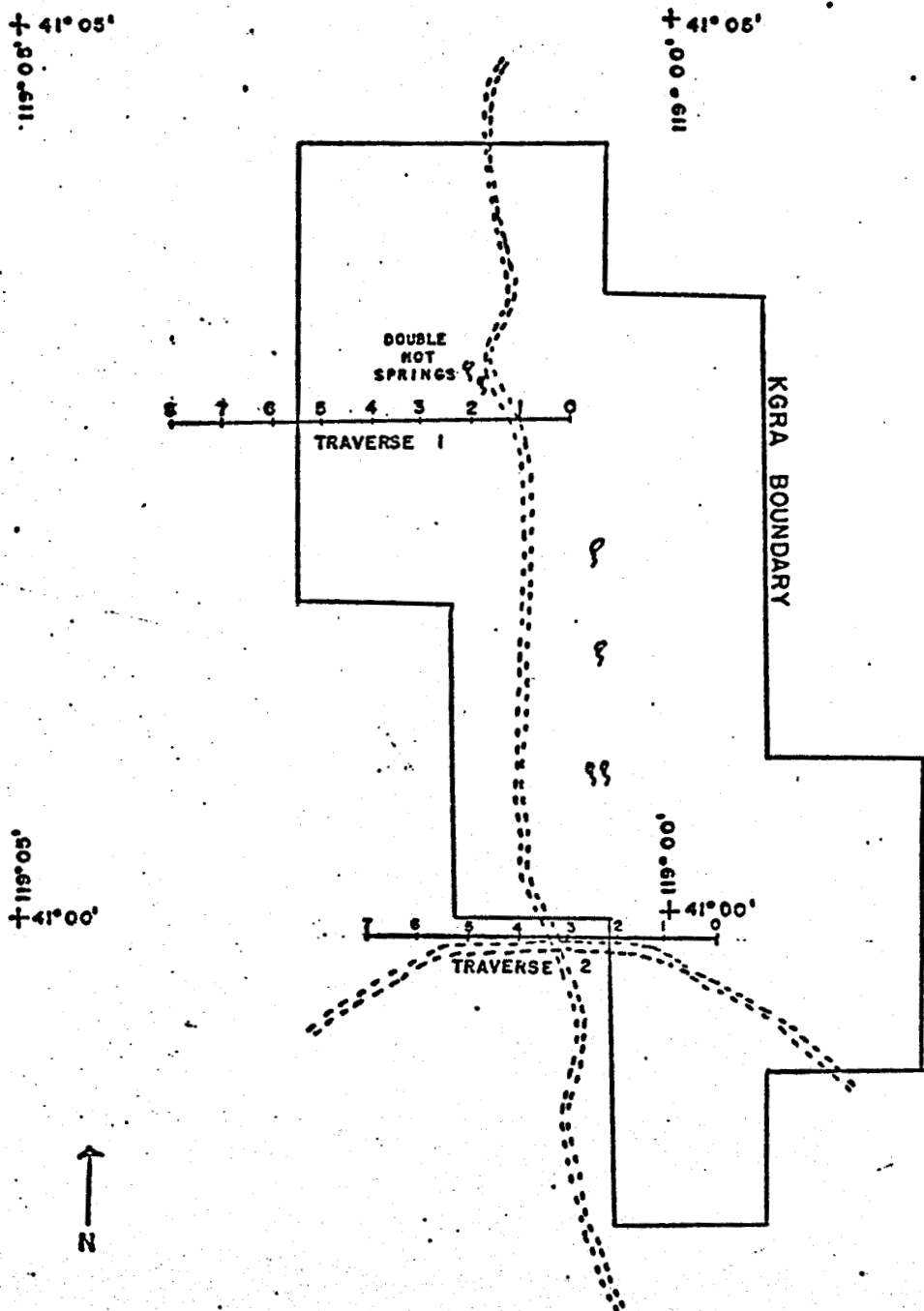
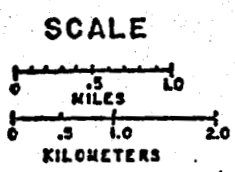


FIGURE 1. TELLURIC PROFILES STATION LOCATION MAP
 DOUBLE HOT SPRINGS KNOWN GEOTHERMAL RESEARCH AREA, NEVADA



1977
 BY

R.M. SENTERFIT, D.B. HOOVER & K. CHRISTOPHERSON



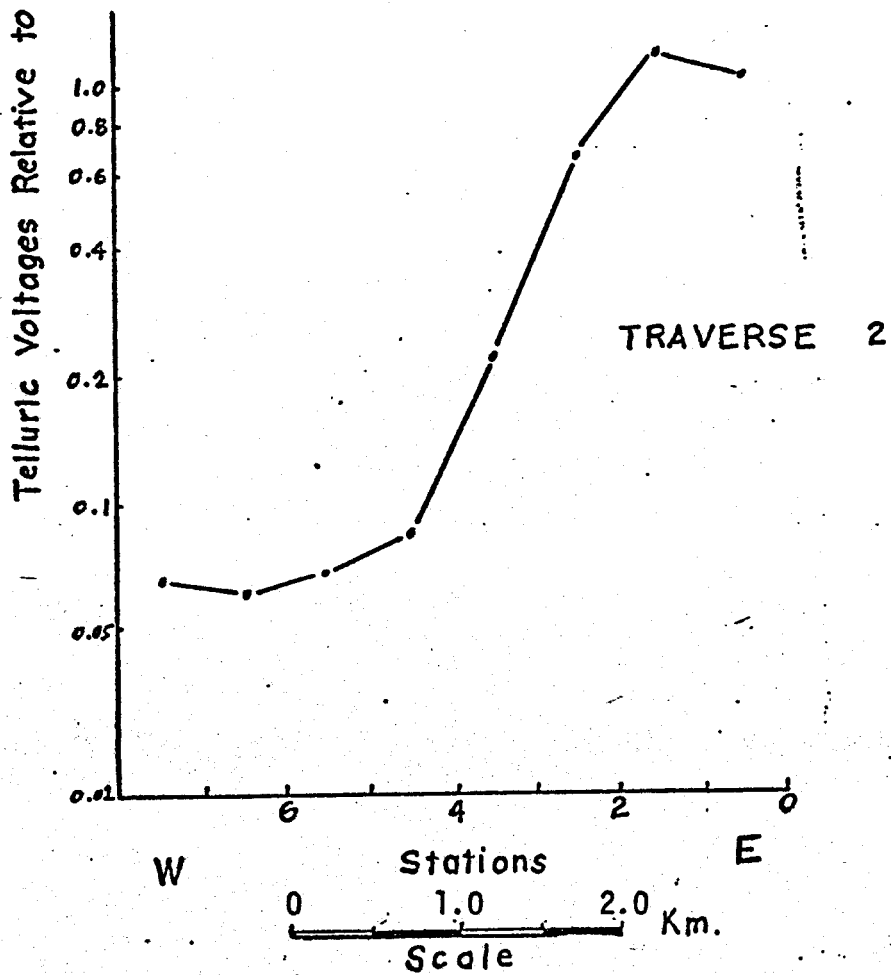
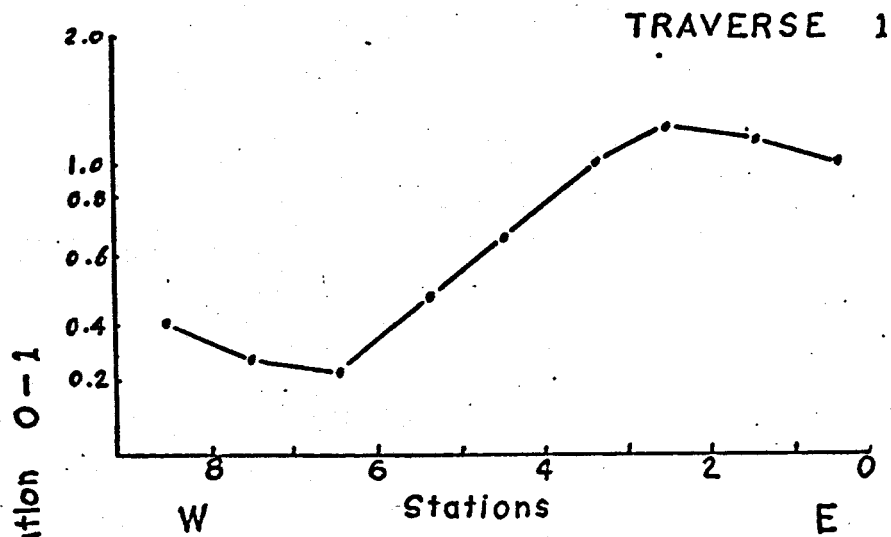


FIGURE 2. TELLURIC PROFILES

DOUBLE HOT SPRINGS KGRA - NEVADA