

RECORDS ADMINISTRATION



R0139043

DP-1566 ✓

**CALCULATION OF PARTICULATE DISPERSION IN A
DESIGN-BASIS TORNADIC STORM FROM THE ATOMICS
INTERNATIONAL NUCLEAR MATERIAL DEVELOPMENT
FACILITY, SANTA SUSANA, CALIFORNIA**

D. W. Pepper

TIS FILE
RECORD COPY



**E. I. du Pont de Nemours & Co.
Savannah River Laboratory
Aiken, SC 29808**

PREPARED FOR THE U. S. DEPARTMENT OF ENERGY UNDER CONTRACT DE-AC09-76SR00001

DISCLAIMER

This report was prepared by E. I. du Pont de Nemours and Company (Du Pont) for the United States Department of Energy under Contract DE-AC09-76SR00001 and is an account of work performed under that Contract. Neither the United States, the United States Department of Energy nor Du Pont, nor any of their employees, makes any warranty, express or implied, or assumes any legal liability or responsibility for the accuracy, completeness, or usefulness of any information, apparatus, product, or process disclosed herein, or represents that its use will not infringe privately owned rights. Reference herein to any specific commercial product, process, or service by trade name, mark, manufacturer, or otherwise does not necessarily constitute or imply endorsement, recommendation, or favoring of same by Du Pont or by the United States Government or any agency thereof. The views and opinions of authors expressed herein do not necessarily state or reflect those of the United States Government or any agency thereof.

Printed in the United States of America

Available from

National Technical Information Service
U. S. Department of Commerce
5285 Port Royal Road
Springfield, Virginia 22161

Price: Printed Copy A02; Microfiche A01

Distribution Category: UC-11

**CALCULATION OF PARTICULATE DISPERSION IN A
DESIGN-BASIS TORNADIC STORM FROM THE ATOMICS
INTERNATIONAL NUCLEAR MATERIAL DEVELOPMENT
FACILITY, SANTA SUSANA, CALIFORNIA**

D. W. Pepper

Approved by

**T. V. Crawford, Research Manager
Environmental Transport Division**

Publication Date: July 1980

**E. I. du Pont de Nemours & Co.
Savannah River Laboratory
Aiken, SC 29808**

PREPARED FOR THE U. S. DEPARTMENT OF ENERGY UNDER CONTRACT DE-AC09-76SR00001

ABSTRACT

A three-dimensional numerical model is used to calculate ground-level air concentration and deposition (due to precipitation scavenging) after a hypothetical tornado strike at the Atomics International Nuclear Material Development Facility at Santa Susana, California. Plutonium particles less than 20 μm in diameter are assumed to be lifted into the tornadic storm cell by the vortex. The rotational characteristics of the tornadic storm are embedded within the larger mesoscale flow of the storm system. The design-basis translational wind values are based on probabilities associated with existing records of tornado strikes in the vicinity of the plant site. Turbulence exchange coefficients are based on empirical values deduced from experimental data in severe storms and from theoretical assumptions obtained from the literature. The method of moments is used to incorporate subgrid-scale resolution of the concentration within a grid cell volume. This method is a quasi-Lagrangian scheme which minimizes numerical error associated with advection.

In all case studies, the effects of updrafts and downdrafts, coupled with scavenging of the particulates by precipitation, account for most of the material being deposited within 50 km downwind of the plant site. Ground-level isopleths in the x-y plane show that most of the material is deposited behind and slightly to the left of the centerline trajectory of the storm. Approximately 5% of the material is dispersed into the stratosphere and anvil section of the storm.

CONTENTS

Introduction	5
Site Characteristics and Design-Basis Tornadoes	6
Dispersion Model	7
Results	10
Conclusions	22
References	24

LIST OF TABLES

- 1 Windspeed Values and Probabilities of Occurrence 6
- 2 Average Sector Air Concentration at Ground Level 18
- 3 Average Sector Deposition at Ground Level 19
- 4 Average Sector Air Concentration at Ground Level
from Plant Site 20
- 5 Average Sector Deposition at Ground Level from
Plant Site 21

LIST OF FIGURES

- 1 Air Concentration in the x-z Plane (center of plane
passing through axis of tornado) 11
- 2 Ground Level Air Concentration in the x-y Plane (t = 40 min)
(rotational winds represent tornadic storm) 11
- 3 Maximum Ground Level Centerline Air Concentration
from Initialization Point in Storm 12
- 4 Maximum Ground Level Centerline Air Concentration
from Plant Site 13
- 5 Ground Level Air Concentration Isolog Plots (m^{-3}) in the
x-y Plane (t = 60 min) 15
- 6 Ground Level Deposition Isolog Plots (m^{-2}) in the x-y
Plane (t = 60 min) 16
- 7 Concentric Annuli in 22.5° Sectors in the x-y Plane 17

**CALCULATION OF PARTICULATE DISPERSION IN A DESIGN - BASIS
TORNADIC STORM FROM THE ATOMICS INTERNATIONAL NUCLEAR
MATERIAL DEVELOPMENT FACILITY AT SANTA SUSANA, CALIFORNIA**

INTRODUCTION

This study is part of a series sponsored by the U.S. Nuclear Regulatory Commission and managed by Argonne National Laboratory regarding the radiological consequences of a hypothetical tornado striking a plutonium fabrication facility. The report deals specifically with the meteorological dispersion of plutonium particles in a tornadic storm after the Atomic International Nuclear Material Development Facility (NMDF) at Santa Susana, California is breached.

The risk assessment and site characterization of the Atomic International NMDF have been made by Fujita¹ and were based on existing records of extreme windstorms and tornadoes. The storm characteristics were computed as a function of yearly probabilities in an effort to determine design-basis storms representative of the site. The design-basis wind values were based on threshold windspeeds corresponding to structural responses of the buildings and their components as determined by Mehta *et al.*² Damage postulations have been translated into consequences of damage to specific equipment and areas of the plant. These consequences are used as input information by Mishima *et al.*³ for estimating the amount and form of plutonium released into the atmosphere.

SITE CHARACTERISTICS AND DESIGN-BASIS TORNADOES

Site topography and characteristics with windspeed values and probability of occurrence of a design-basis tornado are given in detail for the Atomics International NMDF by Fujita¹. In this study, windspeeds associated with probabilities per year for a tornadic storm striking the Atomics International site are given in Table 1.²

TABLE 1

Windspeed Values and Probabilities of Occurrence for Tornado at Atomics International NMDF

	<i>Windspeed, m/sec</i>			
<i>Probability, yr⁻¹</i>	1×10^{-7}	3×10^{-7}	7×10^{-7}	2×10^{-6}
Maximum total	76.0	67.1	58.1	49.2
Translational	15.2	13.4	11.6	9.8
Tangential	60.8	53.7	46.5	39.4

The radius of the tornado is assumed to be 150 m with the vortex extending to an altitude of 1000 m.⁴ Fujita¹ reports that several tornadoes with windspeeds corresponding to these probabilities have occurred within 232 km of the plant site. Mehta *et al.*² and Mishima *et al.*³ estimated that each design-basis tornado causes enough damage to the Atomics International NMDF to allow unencapsulated plutonium particles to be lifted into the vortex.

Fujita¹ reports that the strongest tornadoes to occur in the California state region were F2. The strongest tornado to occur nearest the site was of F2 strength and 43 km away. A total of 39 tornadoes were reported to occur within 232 km of the site, the majority being F0-F1, between 1916-1977. Fourteen of the tornadoes had path lengths greater than or equal to 1.61 km. The majority of reported tornadoes moved in a northeasterly direction.

DISPERSION MODEL

The model is based on the solution of the three-dimensional time-dependent equation for pollutant transport:

$$\frac{\partial C}{\partial t} + \vec{U} \cdot \nabla C = \nabla \cdot (\hat{K} \nabla C) + S \quad (1)$$

where C is the concentration, g/m^3 ; \vec{U} is the vector velocity field, m/sec ; \hat{K} is the directionally dependent eddy diffusivity (exchange coefficient of diffusion, m^2/sec); and S represents the sink term associated with precipitation scavenging, $g/(m^3-sec)$. The complexity of the flow fields associated with tornadic storms and the numerous scales of turbulence involved (which characterize the diffusion processes) do not permit simple solutions to Equation 1.

Gaussian solutions have been used in the past for solution of Equation 1 under ideal steady state conditions.⁵ These solutions are not flexible enough to include the variations in updraft and downdraft velocities, as well as the regionally dependent scavenging within the thunderstorm cell. Vertical wind shear and scavenging contribute significantly to early deposition of radioactive particles. In order to accommodate the temporal and spatial variations of numerous meteorological parameters, including the effects of wind shear and wet deposition, a numerical method is used to solve Equation 1.

The problems of numerical dispersion errors and mesh refinement associated with numerical methods are reduced by using a quasi-Lagrangian scheme with an Eulerian finite difference method. To reduce the computer memory requirements needed to solve the three-dimensional equation of concentration transport, Equation 1 is split into a series of one-dimensional advection-diffusion equations.⁶ The method involves splitting each individual one-dimensional equation into a Lagrangian advection part plus an Eulerian diffusion part. The method of second moments is used to maintain subgrid scale resolution of the concentration.

The method of second moments is a unique quasi-Lagrangian scheme initially developed by Egan and Mahoney⁷ to model the transport of urban pollutants. The method calculates the zeroth, first, and second moments of the concentration within a mesh and then advects and diffuses the concentration by maintaining conservation of the moments. The moments correspond to the mean concentration, center of mass, and scaled distribution variance (moment of inertia), respectively. The method of moments was chosen in lieu of other numerical methods because of its ability to resolve steep gradients, to eliminate numerical dispersion

errors, to maintain peak concentration values, and to minimize computation time. A more thorough analysis of the technique is discussed in References 8 and 9.

The initial conditions are crucial to the downwind dispersal patterns after the facility is breached. Radioactive debris is assumed to be picked up by the tornado and lifted into the thunderstorm cell. The puff consists of particles that vary in size from 1 to 20 μm . Once the pollutant reaches the thunderstorm cell (at a point where the vertical velocity within the tornado is less than the updraft velocity of the thunderstorm cell), the puff is assumed to be dispersed according to the dynamics of the thunderstorm cell.¹⁰ The puff is estimated to be completely distributed throughout the thunderstorm cell within 20 min. The concentration within the thunderstorm cell is initialized by using a skewed log-normal distribution with maximum values centered on the axis of the tornado, according to the mass balance assumptions suggested by Fujita.¹¹ Once the pollutant is dispersed within the storm, advection and turbulent diffusion, along with scavenging, act on the pollutant cloud.

Accurate mesoscale wind-field analyses are essential to correctly calculate the trajectory of the storm. However, the amount of information regarding thunderstorm cell dynamics is limited; therefore a complex three-dimensional solution of the equations of motion is not applicable at the present time. Instead, the wind vector, U , is obtained at each time step of integration by using empirical and experimental values suggested by Fujita¹¹ and Eagleman and Lin.¹² The three-dimensional winds associated with the tornadic storm are discussed in greater detail in Reference 8.

The updraft and downdraft velocities vary with height within the thunderstorm cell,¹¹ decreasing to zero at the top of the anvil. The magnitude of the vertical windspeeds is chosen to be compatible with observations and measurements of vertical velocities within severe storms. Advection and diffusion of the horizontal distribution of the vertical velocity field (at the 1000-m level of the cloud) enable the updraft and downdraft regions of the storm to be propagated with the trajectory of the storm.* Since rain occurs in nearly all tornadic storms, scavenging of the pollutant by raindrops is assumed to occur. Precipitation scavenging field experiments^{12, 13} have shown that scavenging by storms greater than 3000 m high deposit a significant fraction of released tracer material.

* The rotational characteristics of the horizontal wind field within the storm cell are likewise propagated with the trajectory of the storm (procedures analogous to the vertical velocity field calculation).

The sink term in Equation 1 is based on the removal rate of concentration due to raindrops falling through the thunderstorm cell. The removal rate is calculated from empirical estimates and theoretical assumptions derived by Slinn.¹³ A water droplet-particulate collision efficiency of 100% is used. An average rainfall rate of 20 mm/hr is assumed to occur throughout the lifetime of the storm. Although rainfall rates near the center of a severe storm can vary above 100 mm/hr, such high rainfall rates are not constant and fluctuate in location. The value of 20 mm/hr is used as an ensemble average characteristic of severe storms.¹¹ Since updrafts markedly reduce the deposition due to rainout, the removal rate is set equal to zero in those regions of the storm where vertical velocities are positive. This allows the rainfall to occur in those regions of the storm corresponding to the rainshaft and downdraft regions observed in actual storms. A more conservative approach would assume the effect of scavenging to occur over the entire horizontal extent of the thunderstorm. However, the study of the Lamont tornado by Fujita *et al.*¹⁴ indicates that in regions of moderate-to-intense updrafts, rainfall is nonexistent.

RESULTS

Numerous cases were simulated to determine the most likely dispersion patterns as well as potential radiological hazard to the people. The results shown in this study should be regarded as conservative estimates.

Output of the numerical model consists of concentration values specified within individual cell volumes. These values are appropriately adjusted within cell volume to correspond to the spatial dimensions of the cell. Since the amount of radioactive debris picked up by a tornado varies according to the structural damage sustained, a unit release of material has been used to specify the source term. Results are presented as isopleths of ground-level air concentration (ratio of concentration to source mass, χ/Q , m^{-3}) and surface deposition (m^{-2}) at $t = 60$ minutes. Centerline ground-level values of air concentration (maximum values) are shown as a function of longitudinal distance along the trajectory of the storm. The isopleths are drawn with respect to distance from the point where the material is initially dispersed within the storm.

The convergence and divergence of the mesoscale wind field are not considered; therefore, the longitudinal wind transports the storm cell in a straight line. Since the direction of the tornadic storm is arbitrary, direction is independent of points of the compass. The influence of topography on advection is not considered.* Since dispersion is a function of translational windspeed, the translational velocities are input into the model corresponding to each design-basis tornado. Lateral dispersion along the trajectory of the storm is due primarily to the horizontal extent of the downdraft region (and rotational wind field) in the rear of the storm with minor influence from horizontal diffusion. Scavenging acts to dilute the concentration in the cloud such that ground-level air concentrations are less than ground-level values obtained without scavenging. A more detailed analysis of the effects of scavenging in the calculational procedure is discussed in Reference 8.

The initial air concentration distribution (χ/Q) is shown in Figure 1a in the x-z plane with the center of the plane passing through the axis of the tornado ($t = 0$). Figures 1b and 1c show air concentration (m^{-3}) isopleths for $U = 9.8$ m/sec in the x-z plane at $t = 10$ and 40 min, respectively. Figure 2 shows ground-level air concentration in the x-y plane at $t = 40$ min.

* Further research into this problem would require the incorporation of a more realistic wind field^{1,2} as well as topography.

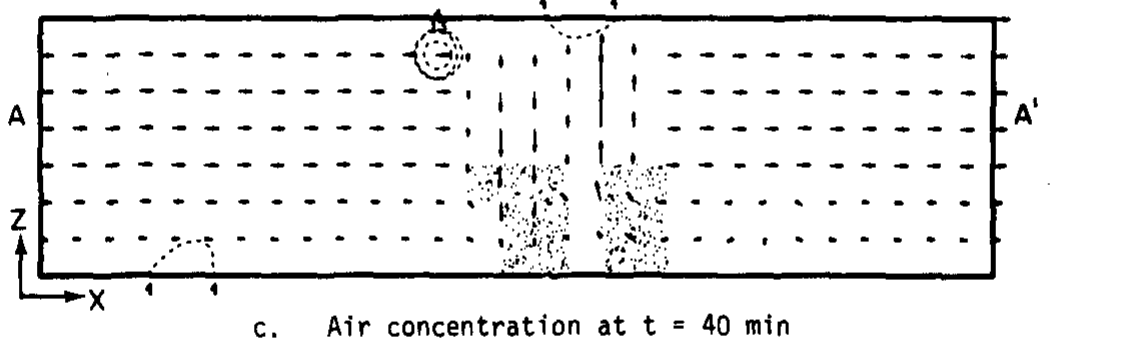
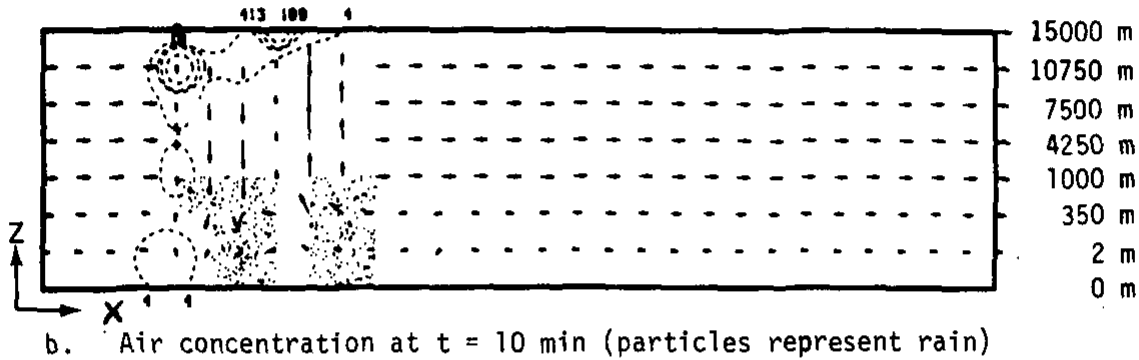
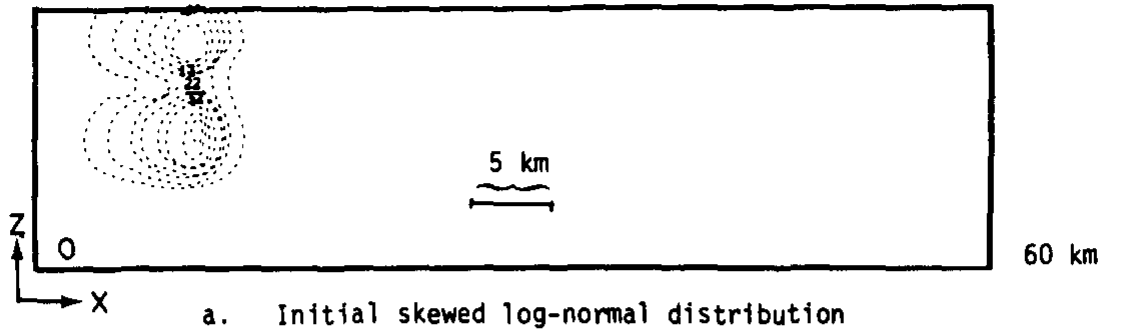
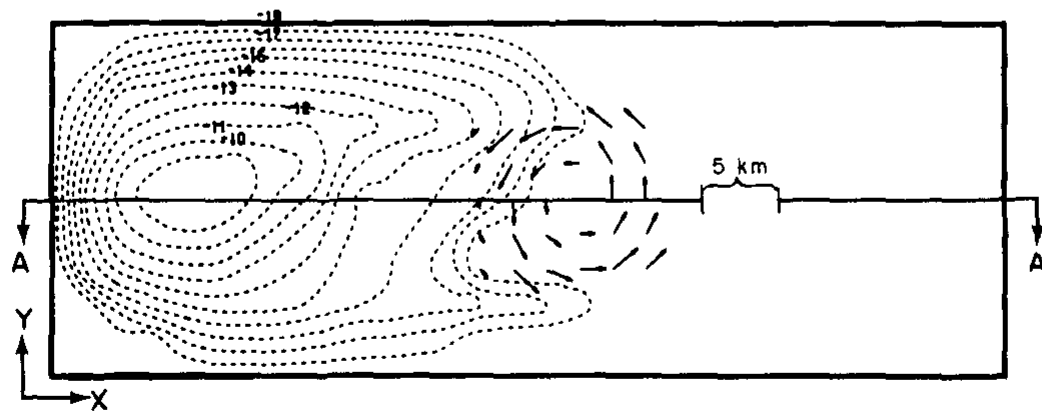


FIGURE 1. - Air Concentration in the x-z Plane
(center of plane passing through axis of tornado)



Ground-level centerline X/Q values are shown in Figures 3 and 4 for each specific translational velocity. The displacement of concentration as a function of translational velocity is evident. In all four cases, 90% of the peak air concentration has reached ground level within one hour after initial dispersion within the cloud (20 min after uptake of the pollutant). The decrease of X/Q values beginning at $X = 12$ km in Figure 3 is due to the depletion of concentration from the cloud (excepting that part transported to the anvil region) and to nearly complete diffusion of the concentration below cloud base to the ground.

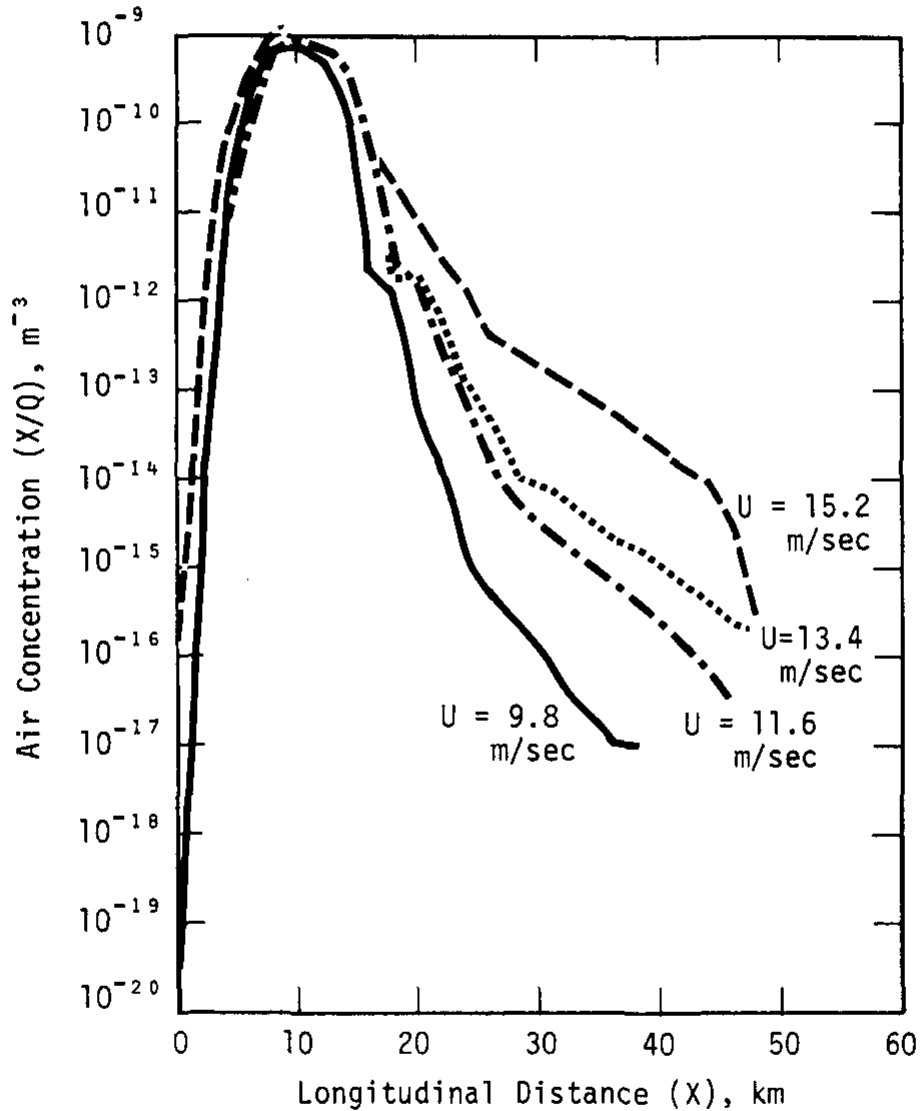


FIGURE 3. Maximum Ground Level Centerline Air Concentration from Initialization Point in Storm

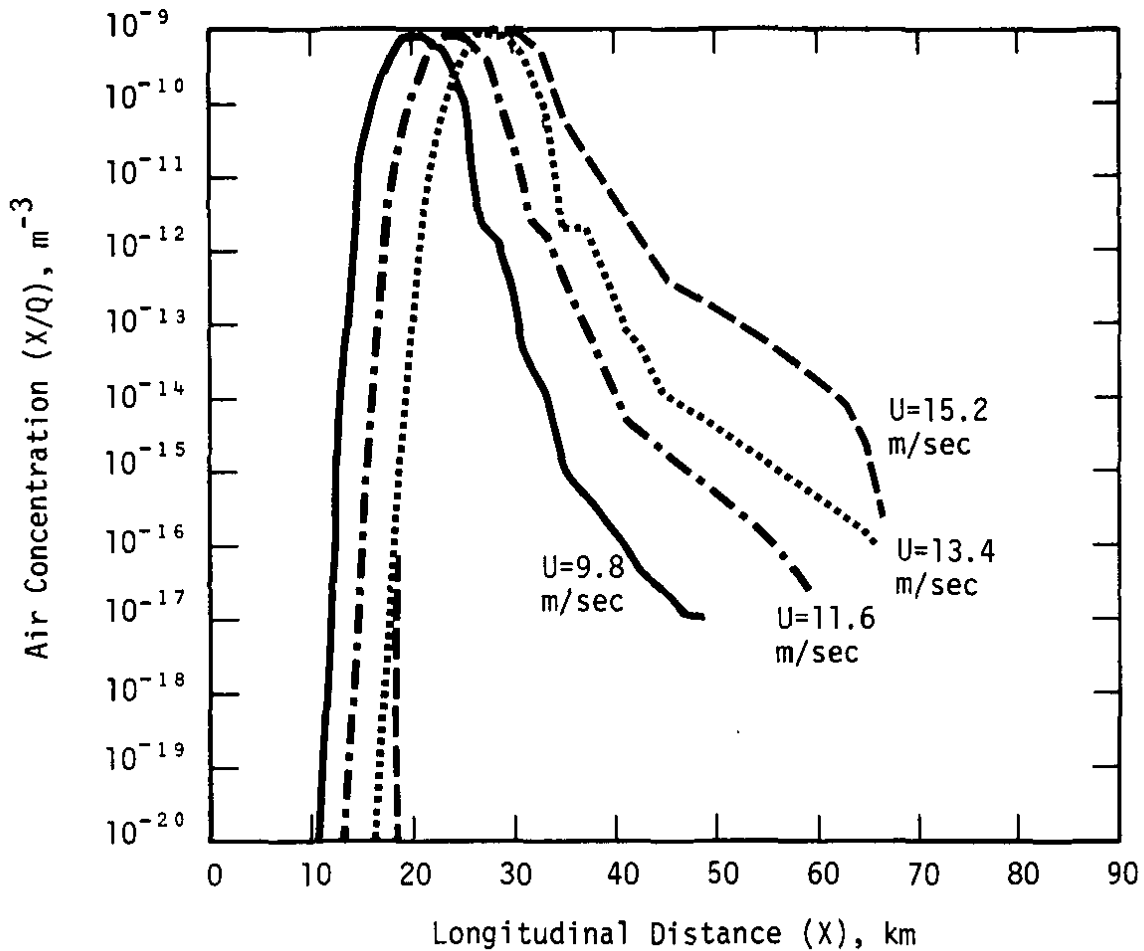


FIGURE 4. Maximum Ground Level Centerline Air Concentration from Plant Site

Isopleths of air concentration at ground level for $t = 60$ min are shown in Figure 5 corresponding to storm translational velocities of $U = 9.8, 11.6, 13.4,$ and 15.2 m/sec, respectively. The irregularity in the isopleth contours is due primarily to the advection and diffusion of the updraft/downdraft regions on the storm with time. The ground-level layer consists of unit cells with dimensions of $2000 \text{ m} \times 2000 \text{ m} \times 2 \text{ m}$. Figure 5 shows that as the translational velocity of the storm increases, the lateral spread of air concentration is stretched downwind. Peak concentration values appear less displaced to the right for the tornadic storm with a translational velocity of 9.8 m/sec than with the succeeding velocities. However, once beyond the initial peak concentration area, downwind values of ground-level air concentration are less than values obtained for $U = 11.6, 13.4$ and 15.2 m/sec. This is to be expected because the increase

in advection causes the peak concentration values to be more displaced (and distributed) in the longitudinal direction. Likewise, the slower the translational velocity, the more time turbulent diffusion, vertical advection, and rainout have to act on the airborne concentration.

In test cases run without the influence of updrafts and downdrafts (and scavenging), the air concentration eventually reached ground after 6 hours, but was several orders of magnitude less in value. If the storm moves at 25 m/sec for 6 hours, deposition at the surface would begin approximately 540 km from the NMDF site. However, studies made by Davis¹⁵ and Hane¹⁶ indicate that it would be very unlikely for the pollutant to remain entirely within a storm cell for several hours without vertical wind shear and scavenging bringing a fraction of the pollutant to the surface.

Ground-level raindrop depositions (m^{-2}) are shown in Figure 6 for 9.8, 11.6, 13.4 and 15.2 m/sec, respectively. The deposition patterns consist of raindrops that have scavenged pollutant from the storm cell and stick to the surface. As shown in Figures 3, 4, and 5, the effect of advection on air concentration is also evident on ground-level deposition: the highest peak values are obtained when 9.8 with the peak region being nearest to the initial dispersion point in the cloud; subsequent downwind values are slightly less in value than the succeeding cases with 11.6, 13.4, and 15.2. The increase in translational velocity causes the region of peak concentration to be shifted along the direction of the storm.

Based on the test cases analyzed in this study, early deposition of concentration occurs within 10 to 20 min after the initial dispersion of concentration within the storm cell. The primary mechanisms for concentration reaching the surface come from the effect of the downdraft vertical velocity distribution and wet deposition. In all cases, 50% of the initial concentration, excepting that portion lifted into the anvil region of the cloud, is removed from the cloud within 15 minutes from the time of initial dispersion within the storm. The maximum ground-level concentration in all cases occurs within 45 minutes of ground-level injection.

Maximum centerline air concentration values reveal that peak air concentration at the surface occurs within 12 km in all cases from the point where the initial dispersion within the storm is established (Figure 3). The concentration is essentially depleted from the lower and middle layers of the cloud within 50 km of the peak ground-level value.

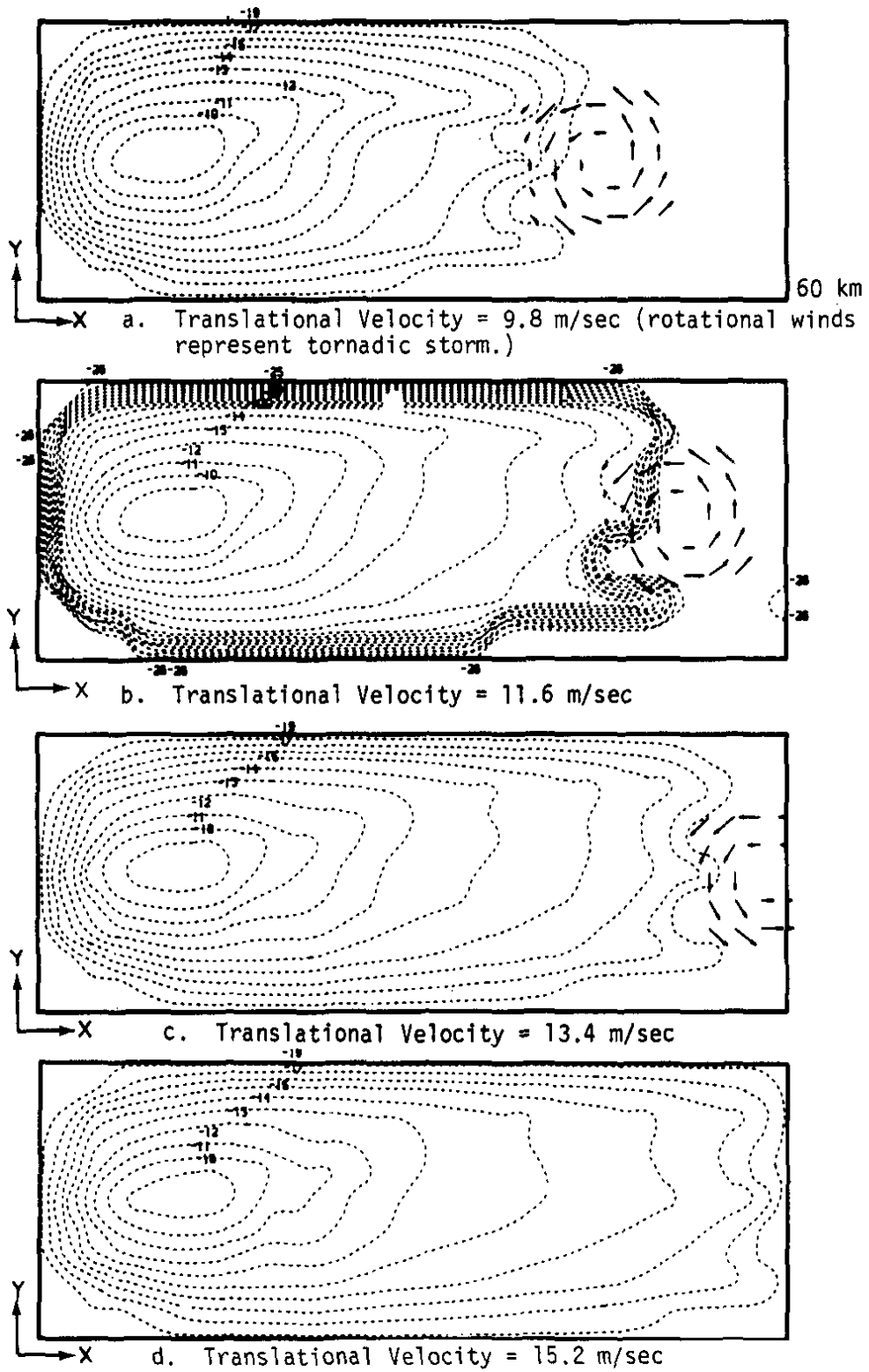


FIGURE 5. Ground-Level Air Concentration Isolog Plots (m^{-3}) in the x-y Plane ($t = 60 \text{ min}$)

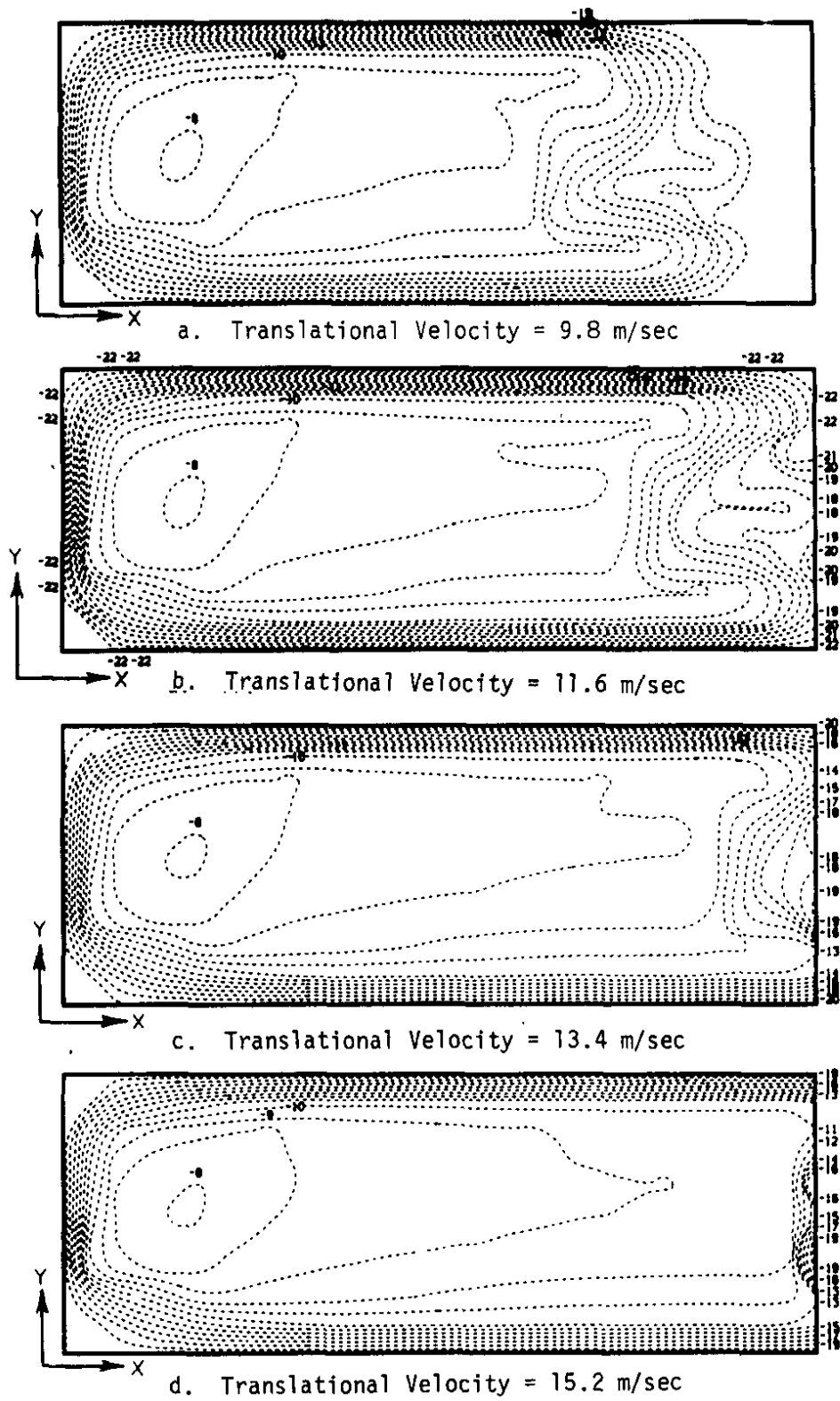


FIGURE 6. Ground-Level Deposition Isolog Plots (m^{-2}) in the x-y Plane ($t = 60$ min)

A modified Gaussian puff tornado model^{5,17} was also used to calculate ground-level air concentration. X/Q values were several orders of magnitude lower than values obtained by the numerical method. This was due to the initial conditions assumed within the cloud (Gaussian in this case about cloud center) and lack of downdrafts.

Figure 7 shows concentric annuli from the initialization point with radii of 1, 2, 3, 4, 5, 6, 7, 8, 9, 10, 20, 30, and 40 miles in 22.5° sectors overlaid on the x-y grid network. Average air concentration and deposition values after 60 min are given in Table 2 and 3 corresponding to sector-averaged ground-level values for each of the four translational velocities, respectively. Since the directional dependence of the storm has been eliminated, sector values for 180 to 360° are considered to be zero. The centerline trajectory of the storm lies between sectors 4 and 5. Appropriate assignment of the centerline trajectory of the storm to a specific direction, i.e., N, NNE, E, etc. would then give corresponding sector averages based on compass points. Tables 4 and 5 give sector-averaged ground-level air concentration and deposition values in 10-mile increments from the Atomic International plant site.

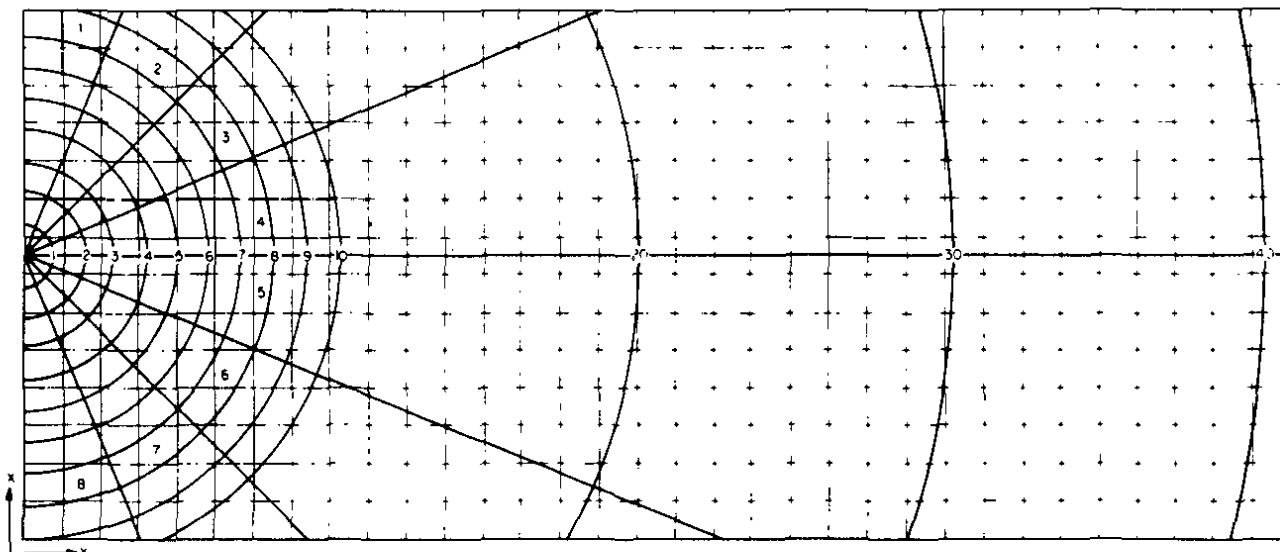


FIGURE 7. Concentric Annuli in 22.5° Sectors in the x-y Plane

TABLE 2

Average Sector Air Concentration (m^{-2}) at Ground Level*

TRANSLATIONAL VELOCITY = 9.8									
Sector	1	2	3	4	5	6	7	8	Radius, mile
0.0	0.0	0.0	0.0	0.0	0.0	0.0	0.0	0.0	1
0.0	1.9E-17	2.1E-16	2.7E-15	2.6E-15	1.9E-16	1.7E-17	0.0	0.0	2
0.0	1.4E-16	5.5E-14	3.4E-12	3.4E-12	6.3E-14	1.0E-16	0.0	0.0	3
0.0	2.3E-15	5.4E-13	4.2E-11	4.4E-11	6.2E-13	2.1E-15	3.4E-20	0.0	4
0.0	5.1E-16	1.2E-12	1.8E-10	2.0E-10	2.0E-12	8.6E-16	7.4E-20	0.0	5
0.0	1.8E-17	1.4E-13	3.2E-10	3.8E-10	2.5E-13	4.7E-16	0.0	0.0	6
0.0	0.0	1.5E-13	3.9E-10	5.1E-10	3.2E-13	1.4E-18	0.0	0.0	7
0.0	7.1E-20	3.8E-14	3.0E-10	4.4E-10	1.1E-13	9.6E-19	0.0	0.0	8
0.0	0.0	2.7E-15	1.5E-10	2.8E-10	3.2E-14	0.0	0.0	0.0	9
0.0	0.0	1.3E-15	4.4E-11	1.3E-10	1.8E-14	0.0	0.0	0.0	10
0.0	0.0	6.8E-17	2.1E-12	4.3E-11	1.3E-15	0.0	0.0	0.0	20
0.0	0.0	0.0	9.4E-17	5.1E-15	0.0	0.0	0.0	0.0	30
0.0	0.0	0.0	0.0	0.0	0.0	0.0	0.0	0.0	40

TRANSLATIONAL VELOCITY = 11.6									
Sector	1	2	3	4	5	6	7	8	Radius, mile
0.0	0.0	0.0	0.0	0.0	0.0	0.0	0.0	0.0	1
0.0	3.6E-18	4.0E-17	1.3E-15	1.3E-15	2.3E-17	2.1E-18	0.0	0.0	2
0.0	3.5E-17	5.1E-15	1.6E-12	1.6E-12	6.3E-15	1.5E-17	0.0	0.0	3
0.0	1.4E-15	5.5E-14	2.4E-11	2.5E-11	6.6E-14	1.3E-15	2.1E-20	0.0	4
0.0	3.0E-16	6.5E-13	1.2E-10	1.3E-10	1.1E-12	5.5E-16	4.6E-20	0.0	5
0.0	1.1E-17	9.7E-14	2.4E-10	2.7E-10	1.7E-13	3.4E-16	0.0	0.0	6
0.0	0.0	1.1E-13	3.5E-10	4.3E-10	2.4E-13	1.0E-18	0.0	0.0	7
0.0	3.4E-20	2.8E-14	2.9E-10	4.0E-10	9.6E-14	6.4E-19	0.0	0.0	8
0.0	0.0	2.0E-15	1.7E-10	2.8E-10	2.6E-14	0.0	0.0	0.0	9
0.0	0.0	1.1E-15	7.0E-11	1.6E-10	1.7E-14	0.0	0.0	0.0	10
0.0	0.0	8.2E-17	5.4E-12	6.0E-11	1.4E-15	0.0	0.0	0.0	20
0.0	0.0	0.0	1.1E-15	5.1E-15	0.0	0.0	0.0	0.0	30
0.0	0.0	0.0	6.4E-20	1.7E-19	0.0	0.0	0.0	0.0	40

TRANSLATIONAL VELOCITY = 13.4									
Sector	1	2	3	4	5	6	7	8	Radius, mile
0.0	0.0	0.0	0.0	0.0	0.0	0.0	0.0	0.0	1
0.0	2.0E-18	2.2E-17	5.7E-16	5.7E-16	1.1E-17	1.0E-18	0.0	0.0	2
0.0	2.0E-17	2.4E-15	8.3E-13	8.3E-13	2.5E-15	7.6E-18	0.0	0.0	3
0.0	8.6E-15	2.7E-14	1.4E-11	1.4E-11	2.8E-14	8.3E-16	1.4E-20	0.0	4
0.0	1.9E-16	3.6E-13	8.0E-11	8.3E-11	5.4E-13	3.7E-16	3.0E-20	0.0	5
0.0	6.5E-18	7.7E-14	1.8E-10	2.0E-10	1.1E-13	2.6E-16	0.0	0.0	6
0.0	0.0	9.3E-14	3.0E-10	3.5E-10	1.7E-13	7.7E-19	0.0	0.0	7
0.0	1.9E-20	2.9E-14	2.7E-10	3.5E-10	8.1E-14	4.8E-19	0.0	0.0	8
0.0	0.0	1.7E-15	1.8E-10	2.7E-10	2.1E-14	0.0	0.0	0.0	9
0.0	0.0	9.6E-16	9.8E-11	1.6E-10	1.5E-14	0.0	0.0	0.0	10
0.0	0.0	6.6E-17	1.7E-11	7.2E-11	1.5E-15	0.0	0.0	0.0	20
0.0	0.0	0.0	5.9E-15	2.0E-14	0.0	0.0	0.0	0.0	30
0.0	0.0	0.0	9.3E-18	4.6E-17	0.0	0.0	0.0	0.0	40

TRANSLATIONAL VELOCITY = 15.2									
Sector	1	2	3	4	5	6	7	8	Radius, mile
0.0	0.0	0.0	0.0	0.0	0.0	0.0	0.0	0.0	1
0.0	2.3E-13	2.5E-12	8.7E-13	7.2E-13	7.3E-14	6.6E-15	0.0	0.0	2
0.0	3.9E-12	4.3E-11	3.8E-10	3.7E-10	3.5E-11	5.7E-14	0.0	0.0	3
2.0E-18	4.1E-11	5.2E-10	2.0E-09	2.0E-09	4.8E-10	3.2E-11	1.0E-16	0.0	4
4.3E-18	8.1E-12	9.4E-10	5.7E-09	5.9E-09	1.0E-09	1.6E-11	2.2E-16	0.0	5
0.0	1.8E-14	8.8E-10	1.1E-08	1.1E-08	1.1E-09	8.9E-12	1.6E-20	0.0	6
0.0	1.4E-17	7.3E-10	1.3E-08	1.7E-08	1.3E-09	1.3E-15	0.0	0.0	7
0.0	2.7E-17	1.6E-10	7.5E-09	1.4E-08	6.6E-10	1.8E-15	0.0	0.0	8
0.0	0.0	4.5E-11	3.2E-09	9.3E-09	4.5E-10	0.0	0.0	0.0	9
0.0	0.0	2.2E-11	1.6E-09	5.7E-09	2.9E-10	0.0	0.0	0.0	10
0.0	0.0	9.4E-13	5.3E-09	1.5E-08	2.5E-11	0.0	0.0	0.0	20
0.0	0.0	0.0	1.3E-09	3.3E-09	0.0	0.0	0.0	0.0	30
0.0	0.0	0.0	5.0E-10	1.3E-09	0.0	0.0	0.0	0.0	40

* Values followed by the letter E (for exponent), minus symbol, and two digits indicate the powers of 10 by which the number must be multiplied to obtain the correct value; for example, 7.3E-19 is 7.3×10^{-19} .

TABLE 3

Average Sector Deposition (m^{-2}) at Ground Level*

TRANSLATIONAL VELOCITY = 9.8								Radius, mile	
Sector	1	2	3	4	5	6	7	8	
0.0	0.0	0.0	0.0	0.0	0.0	0.0	0.0	0.0	1
0.0	4.5E-13	4.9E-12	1.7E-12	1.5E-12	1.9E-13	1.7E-14	0.0	0.0	2
0.0	7.2E-12	6.4E-11	5.3E-10	5.2E-10	5.2E-11	1.5E-13	0.0	0.0	3
1.1E-17	6.0E-11	7.5E-10	2.7E-09	2.7E-09	7.1E-10	4.7E-11	2.5E-16	0.0	4
2.3E-17	1.1E-11	1.3E-09	7.4E-09	7.4E-09	1.4E-09	2.3E-11	5.5E-16	0.0	5
0.0	7.4E-14	1.0E-09	1.3E-08	1.3E-08	1.4E-09	1.6E-11	1.1E-19	0.0	6
0.0	1.4E-16	7.9E-10	1.3E-08	1.7E-08	1.6E-09	6.2E-15	0.0	0.0	7
0.0	1.4E-16	1.8E-10	7.0E-09	1.4E-08	1.1E-09	1.1E-14	0.0	0.0	8
0.0	0.0	6.5E-11	2.4E-05	8.9E-09	7.7E-10	0.0	0.0	0.0	9
0.0	0.0	3.0E-11	7.6E-10	5.1E-09	4.6E-10	0.0	0.0	0.0	10
0.0	0.0	1.1E-12	2.2E-09	1.2E-08	3.5E-11	0.0	0.0	0.0	20
0.0	0.0	0.0	3.9E-10	1.8E-09	0.0	0.0	0.0	0.0	30
0.0	0.0	0.0	3.3E-14	9.0E-17	0.0	0.0	0.0	0.0	40

TRANSLATIONAL VELOCITY = 11.6								Radius, mile	
Sector	1	2	3	4	5	6	7	8	
0.0	0.0	0.0	0.0	0.0	0.0	0.0	0.0	0.0	1
0.0	3.5E-13	3.8E-12	1.3E-12	1.1E-12	1.3E-13	1.2E-14	0.0	0.0	2
0.0	5.3E-12	5.5E-11	4.6E-10	4.6E-10	4.5E-11	1.0E-13	0.0	0.0	3
4.2E-18	5.1E-11	6.6E-10	2.4E-09	2.4E-09	6.1E-10	4.0E-11	1.7E-16	0.0	4
9.2E-18	1.0E-11	1.2E-09	6.8E-09	6.9E-09	1.3E-09	2.0E-11	3.8E-16	0.0	5
0.0	4.6E-14	9.8E-10	1.2E-08	1.2E-08	1.3E-09	1.3E-11	5.8E-20	0.0	6
0.0	6.4E-17	7.6E-10	1.3E-08	1.7E-08	1.5E-09	3.3E-15	0.0	0.0	7
0.0	8.4E-17	1.7E-10	7.2E-09	1.4E-08	9.0E-10	5.7E-15	0.0	0.0	8
0.0	0.0	5.7E-11	2.6E-09	9.0E-09	6.6E-10	0.0	0.0	0.0	9
0.0	0.0	2.7E-11	9.9E-10	5.2E-09	4.0E-10	0.0	0.0	0.0	10
0.0	0.0	1.1E-12	3.1E-09	1.3E-08	3.3E-11	0.0	0.0	0.0	20
0.0	0.0	0.0	8.4E-10	2.8E-09	0.0	0.0	0.0	0.0	30
0.0	0.0	0.0	3.1E-12	4.2E-11	0.0	0.0	0.0	0.0	40

TRANSLATIONAL VELOCITY = 13.4								Radius, mile	
Sector	1	2	3	4	5	6	7	8	
0.0	0.0	0.0	0.0	0.0	0.0	0.0	0.0	0.0	1
0.0	2.9E-13	3.2E-12	1.1E-12	8.8E-13	9.1E-14	8.3E-15	0.0	0.0	2
0.0	4.4E-12	4.6E-11	4.0E-10	3.9E-10	3.7E-11	7.0E-14	0.0	0.0	3
2.5E-18	4.3E-11	5.5E-10	2.1E-09	2.1E-09	5.1E-10	3.3E-11	1.3E-16	0.0	4
5.5E-18	8.5E-12	1.0E-09	6.2E-09	6.3E-09	1.1E-09	1.7E-11	2.9E-16	0.0	5
0.0	2.7E-14	9.2E-10	1.1E-08	1.1E-08	1.2E-09	1.1E-11	2.7E-20	0.0	6
0.0	2.8E-17	7.3E-10	1.3E-08	1.7E-08	1.4E-09	2.0E-15	0.0	0.0	7
0.0	4.2E-17	1.6E-10	7.5E-09	1.4E-08	7.9E-10	3.2E-15	0.0	0.0	8
0.0	0.0	5.0E-11	2.9E-09	9.4E-09	5.7E-10	0.0	0.0	0.0	9
0.0	0.0	2.5E-11	1.3E-09	5.5E-09	3.5E-10	0.0	0.0	0.0	10
0.0	0.0	1.0E-12	4.3E-09	1.4E-08	3.0E-11	0.0	0.0	0.0	20
0.0	0.0	0.0	1.2E-09	3.5E-09	0.0	0.0	0.0	0.0	30
0.0	0.0	0.0	1.5E-10	5.9E-10	0.0	0.0	0.0	0.0	40

TRANSLATIONAL VELOCITY = 15.2								Radius, mile	
Sector	1	2	3	4	5	6	7	8	
0.0	0.0	0.0	0.0	0.0	0.0	0.0	0.0	0.0	1
0.0	1.2E-16	1.4E-17	2.6E-16	2.5E-16	6.9E-18	6.3E-19	0.0	0.0	2
0.0	1.2E-17	1.6E-15	3.9E-13	3.9E-13	1.6E-15	4.9E-18	0.0	0.0	3
0.0	5.9E-16	1.8E-14	8.1E-12	8.2E-12	1.8E-14	5.8E-16	9.3E-21	0.0	4
0.0	1.3E-16	1.8E-13	5.5E-11	5.6E-11	2.5E-13	2.6E-16	2.0E-20	0.0	5
0.0	4.4E-18	6.0E-14	1.3E-10	1.4E-10	7.5E-14	2.1E-16	0.0	0.0	6
0.0	0.0	7.8E-14	2.5E-10	2.8E-10	1.3E-13	6.0E-19	0.0	0.0	7
0.0	1.2E-20	2.7E-14	2.5E-10	3.0E-10	6.4E-14	4.5E-19	0.0	0.0	8
0.0	0.0	1.7E-15	1.8E-10	2.4E-10	1.5E-14	0.0	0.0	0.0	9
0.0	0.0	9.7E-16	9.9E-11	1.6E-10	1.2E-14	0.0	0.0	0.0	10
0.0	0.0	6.3E-17	2.8E-11	7.9E-11	1.3E-15	0.0	0.0	0.0	20
0.0	0.0	0.0	1.4E-14	3.9E-14	0.0	0.0	0.0	0.0	30
0.0	0.0	0.0	2.4E-16	6.4E-16	0.0	0.0	0.0	0.0	40

* Values followed by the letter E (for exponent), minus symbol, and two digits indicate the powers of 10 by which the number must be multiplied to obtain the correct value; for example, 7.3E-19 is 7.3×10^{-19} .

TABLE 4

Average Sector Air Concentration (m^{-2}) at Ground Level*

Sector Values from Plant Site in 10 mi Increments

Translational Velocity = 9.8							Radius, mile
Sector →	1	2	3	4	5	6	
	0.0	0.0	1.3E-17	8.0E-11	8.8E-11	3.0E-16	10
	0.0	0.0	2.8E-17	1.3E-09	1.9E-09	5.7E-16	20
	0.0	0.0	0.0	7.0E-15	4.0E-13	0.0	30
	0.0	0.0	0.0	2.0E-18	5.2E-17	C.C	40
	0.0	0.0	0.0	0.0	0.0	0.0	50
Translational Velocity = 11.6							Radius, mile
Sector →	1	2	3	4	5	6	
	0.0	0.0	0.0	0.0	0.0	0.0	10
	0.0	0.0	0.0	1.3E-09	1.7E-09	4.7E-19	20
	0.0	0.0	0.0	1.9E-12	1.5E-11	0.0	30
	0.0	0.0	0.0	4.9E-16	2.5E-15	0.0	40
	0.0	0.0	0.0	1.9E-26	4.1E-27	0.0	50
Translational Velocity = 13.4							Radius, mile
Sector →	1	2	3	4	5	6	
	0.0	0.0	0.0	0.0	0.0	0.0	10
	0.0	0.0	0.0	1.1E-09	1.4E-09	2.1E-20	20
	0.0	0.0	0.0	2.3E-11	9.7E-11	0.0	30
	0.0	0.0	0.0	3.4E-15	1.8E-14	0.0	40
	0.0	0.0	0.0	8.7E-18	4.2E-17	0.0	50
Translational Velocity = 15.2							Radius, mile
Sector →	1	2	3	4	5	6	
	0.0	0.0	0.0	0.0	0.0	0.0	10
	0.0	0.0	0.0	3.7E-08	4.3E-08	0.0	20
	0.0	0.0	0.0	1.6E-08	4.1E-08	0.0	30
	0.0	0.0	0.0	1.6E-09	4.2E-09	0.0	40
	0.0	0.0	0.0	7.5E-10	1.9E-09	0.0	50

* Values followed by the letter E (for exponent), minus symbol, and two digits indicate the powers of 10 by which the number must be multiplied to obtain the correct value; for example, 7.3E-19 is 7.3×10^{-19} .

TABLE 5

Average Sector Deposition (m^{-2}) at Ground Level*

Sector Values from Plant Site in 10 mi Increments

Translational Velocity = 9.8							Radius, mile
Sector →	1	2	3	4	5	6	
	0.0	0.0	1.9E-12	7.1E-09	7.0E-09	9.5E-12	10
	0.0	0.0	1.1E-13	4.5E-08	7.8E-08	2.0E-11	20
	0.0	0.0	0.0	9.4E-10	5.3E-09	0.0	30
	0.0	0.0	0.0	6.4E-12	3.4E-10	0.0	40
	0.0	0.0	0.0	1.3E-21	1.3E-21	0.0	50

Translational Velocity = 11.6							Radius, mile
Sector →	1	2	3	4	5	6	
	0.0	0.0	0.0	0.0	0.0	0.0	10
	0.0	0.0	3.1E-17	5.0E-08	7.8E-08	1.6E-15	20
	0.0	0.0	0.0	2.6E-09	1.0E-08	0.0	30
	0.0	0.0	0.0	6.7E-10	2.3E-09	0.0	40
	0.0	0.0	0.0	1.7E-12	7.7E-13	0.0	50

Translational Velocity = 13.4							Radius, mile
Sector →	1	2	3	4	5	6	
	0.0	0.0	0.0	0.0	0.0	0.0	10
	0.0	0.0	2.4E-19	4.8E-08	7.2E-08	5.0E-17	20
	0.0	0.0	0.0	4.6E-09	1.6E-08	0.0	30
	0.0	0.0	0.0	1.2E-09	3.4E-09	0.0	40
	0.0	0.0	0.0	1.4E-10	5.6E-10	0.0	50

Translational Velocity = 15.2							Radius, mile
Sector →	1	2	3	4	5	6	
	0.0	0.0	0.0	0.0	0.0	0.0	10
	0.0	0.0	0.0	4.5E-10	5.5E-10	0.0	20
	0.0	0.0	0.0	5.4E-10	7.7E-10	0.0	30
	0.0	0.0	0.0	3.1E-14	1.4E-13	0.0	40
	0.0	0.0	0.0	7.9E-16	2.1E-15	0.0	50

* Values followed by the letter E (for exponent), minus symbol, and two digits indicate the powers of 10 by which the number must be multiplied to obtain the correct value; for example, 7.3E-19 is 7.3×10^{-19} .

CONCLUSIONS

A three-dimensional numerical model is used to calculate the dispersion of small particulates in a tornadic storm. The model is designed to allow various meteorological parameters to be updated as more precise information becomes available. The three-dimensional transient equation of concentration transport is solved by a quasi-Lagrangian method of second moments in an Eulerian mesh centered over the assumed trajectory of the storm.

The horizontal wind field varies with height over the one-hour period after the Atomic International NMDF is breached. The updrafts and downdrafts associated with the tornadic storm are calculated from initial empirical estimates and then advected with the storm. The horizontal rotational wind field within the storm cell is also advected with the vertical velocity field. As the storm cell spreads horizontally, the wind field within the storm cell spreads accordingly.

Because of the lack of precise information regarding turbulence within severe storms, the turbulence diffusion coefficients are obtained from empirical estimates. These estimates are based on sparse data measured within storms and theoretical equations appearing in the literature.

Scavenging is calculated as a sink term to the governing equation. Washout scavenging below the cloud base acts on large particles; rainout scavenging acts on small particles within the cloud. However, limited knowledge of scavenging in severe storms necessitates the use of a simple general expression based on rainfall rates, droplet size, and a 100% collision efficiency. The effect of topography surrounding the Atomic International site is introduced through specification of roughness heights used in determining turbulent diffusion below the cloud. The effect of topography on advection is not considered.

The pollutant is assumed to be dispersed throughout the thunderstorm cell. A skewed log-normal distribution is used to initialize the concentration field. Approximately 35% of the material is dispersed within the upper regions of the cloud, 15% within the middle section of the storm, and 50% within the lower layers and cloud base of the storm. Once the concentration field is established, scavenging and downdraft velocities begin to bring the concentration to the ground.

The updraft and downdraft vertical velocity distributions and wet deposition account for most of the material being deposited at the surface one hour after initial uptake of the material. Scavenging accounts for approximately 50% of the particle removal from the cloud within 15 min. A constant rainfall rate of 20 mm/hr is used throughout the calculation. The deposition of concentration at the surface consists primarily of plutonium particles suspended within waterdrops. As additional information on rainfall rates and velocities in tornadic storms becomes available, deposition will likely become highly nonuniform.

Ground-level air concentration begins to reach the surface within 5 min. Results show values of ground-level concentrations to begin occurring within 10 to 20 km from the NMDF. Peak centerline air concentrations occur within 12 km of the point of initial dispersion within the cloud. The concentration decreases significantly with distance after peak ground-level values are reached. The lateral spread of ground-level concentration is principally governed by the size of the thunderstorm cell directly overhead. Downdrafts and scavenging have more influence on bringing the concentration directly from the storm cell to the surface than turbulent diffusion. Concentration reaching the anvil portion of the cloud is advected at a faster velocity than concentration in the lower levels of the storm. Approximately 5% of the concentration is advected out of the anvil into the stratosphere.

Results obtained with a modified Gaussian puff model were considered to be low and showed the inflexibility of the analytical solution to account for the transient nature of the vertical wind field. Ground-level χ/Q values were several orders of magnitude less in value than χ/Q values obtained from the numerical method.

REFERENCES

1. T. T. Fujita. *Review of Severe Weather Meteorology at Rockwell International, Chatsworth, CA*. A report prepared under ANL Contract No. 31-109-38-3731, University of Chicago, Chicago, IL (June, 1977).
2. K. C. Mehta, J. R. McDonald, and F. Alikhanlou. *Response of Structures to Extreme Wind Hazard at the Atomic International Nuclear Materials Development Facilities, Santa Susana, California, Vol. I*. Institute for Disaster Research, Texas Tech University, Lubbock, TX (June, 1980).
3. J. Mishima. *NRC Analysis of the Effect of Natural Phenomena Upon Existing Plutonium Plants*, C-98278, Battelle Pacific Northwest Laboratories, Richland, WA (May, 1978).
4. T. T. Fujita. *Tornado Structure for Engineering Application with Design Basis Tornado Model (DBT-77)*. A report prepared under ANL Contract No. 31-109-38-3731, University of Chicago, Chicago, IL (August 1977).
5. D. W. Pepper. *Dispersion of Small Particles in a Tornado*. USERDA Report DP-1387, E. I. du Pont de Nemours and Company, Savannah River Laboratory, Aiken, SC (1975).
6. D. W. Pepper and C. D. Kern. "Modeling the Dispersion of Atmospheric Pollution Using Cubic Splines and Chapeau Functions." *Advances in Computer Methods for Partial Differential Equations - II*. IMACS (AICA), Department of Computer Science, Rutgers University, R. Vichnevetsky, Editor, New Brunswick, NJ (1977) pp 269-276.
7. B. A. Egan, and J. R. Mahoney. "Numerical Modeling of Advection and Diffusion of Urban Area Source Pollutants," *J. Appl. Meterol.* 11, 312-322 (1972).
8. D. W. Pepper. *Dispersion of Radioactive Pollutant in a Tornadic Storm*. USDOE Report Dp-1556, E. I. du Pont de Nemours & Company, Savannah River Laboratory, Aiken, SC, (to be issued).
9. D. W. Pepper and P. E. Long. "A Comparison of Results Using Second Order Moments with and without Width Correction to Solve the Advection Equation." *J. Applied Meterol.* 17, Vol. II, 228-233 (1978).

10. F. Pasquill, Winnersh, Berkshire, U.K.
Personal Communication (1976).
11. T. T. Fujita, University of Chicago, Chicago, IL.
Personal Communication (1977).
12. J. R. Eagleman and W. C. Lin. "Severe Thunderstorm Internal Structure from Dual-Doppler Radar Measurements."
J. Appl. Meteorol. 16, 1036-1048 (1977).
13. W. G. Slinn. "In-Cloud Scavenging of Aerosol Particles,"
Annual Report for 1974. Part III. Atmospheric Sciences.
USAEC Report BNWL-1950 (Pt. 3), Battelle Northwest
Laboratories, Richland, WA (February 1975) pp 114-118.
14. T. T. Fujita, M. R. Hjelmfelt, and S. A. Changnon.
"Meso-analysis of Record Chicago Rainstorms Using Radar,
Satellite, and Rain Gauge Data," *Tenth Conference on Severe
Local Storms*, October 18-21, Omaha, Nebraska, pp 65-72 (1977).
15. W. E. Davis. "A Model for In-Cloud Scavenging of Cosmogenic
Radionuclides." *J. Geophys. Res.* 77, No. 12, 2159-2165
(1972).
16. C. E. Hane. "Precipitation Scavenging in a Squall Line:
Numerical Experimentation." *Annual Report for 1974. Part III.
Atmospheric Sciences.* USAEC Report BNWL-1950 (Pt. 3),
Battelle Northwest Laboratories, Richland, WA (February 1975)
pp 143-149.
17. D. W. Pepper. *Calculation of Particulate Dispersion in a
Design-Basis Tornadic Storm from the Babcock and Wilcox Plant,
Leechburg, Pennsylvania.* USDOE Report DP-1487, E. I. du Pont
de Nemours and Company, Savannah River Laboratory, Aiken, S. C.
(1978).

SPECIAL DISTRIBUTION

Copies

15	J. E. Ayer Fuel Reprocessing & Recycle Branch U. S. Nuclear Regulatory Commission Washington, D. C. 20555
3	J. E. Carson Division of Environmental Impact Studies Argonne National Laboratory 9700 S. Cass Ave. Argonne, IL 60439
2	E. C. Watson Environmental Consequences Pacific Northwest Laboratories Battelle Boulevard Richland, Washington 99352