

# CRS Report for Congress

Received through the CRS Web

## Disaster Unemployment Assistance (DUA)

Julie M. Whittaker  
Analyst in Applied Microeconomics  
Domestic Social Policy Division

### Summary

The Disaster Unemployment Assistance (DUA) program provides monetary assistance to individuals unemployed as a direct result of a major disaster and who are not eligible for regular Unemployment Compensation (UC) benefits. DUA is funded through the Federal Emergency Management Agency (FEMA). DUA is administered by the Department of Labor (DOL) through each state's UC agency. In the 109<sup>th</sup> Congress, P.L. 109-176 was signed into law on March 6, 2006, extending the duration of DUA benefits from 26 to 39 weeks for victims of the Hurricane Katrina and Rita disasters. This extension ends on June 3, 2006, for those qualifying for benefits on account of Hurricane Katrina and on June 24, 2006, for those affected by Hurricane Rita. H.R. 5392 and S. 3030 both propose to extend the DUA benefits to a total of 52 weeks for those affected by Hurricanes Katrina and Rita. This extension did not apply to any subsequent major disasters. The report will be updated as events warrant.

The Unemployment Compensation (UC) system generally does not provide UC benefits to the self-employed, to those who are unable to work, or to those who do not have a recent earnings history. However, when the President declares a major disaster, victims who would typically be ineligible for UC may be eligible for Disaster Unemployment Assistance (DUA).<sup>1</sup> DUA benefits are funded through the Disaster Relief Fund administered by the Federal Emergency Management Agency (FEMA). The funds are then transferred to the Department of Labor (DOL) and then distributed by DOL to each affected state's UC agency.<sup>2</sup>

DUA benefits are available only to those individuals who have become unemployed as a direct result of a declared major disaster. First created in 1970 through P.L. 91-606, DUA benefits are authorized by the Robert T. Stafford Disaster Relief and Emergency

---

<sup>1</sup> Authorization for DUA can be found in the Stafford Act, Section 410, P.L. 100-707, 42 USC 5177. Regulations can be found at 20 CFR 625.

<sup>2</sup> For a description of FEMA, see CRS Report RL33064, *Organization and Mission of the Emergency Preparedness and Response Directorate: Issues and Options for the 109<sup>th</sup> Congress*, by Keith Bea.

Relief Act (the Stafford Act), which authorizes the President to issue a major disaster declaration after state and local government resources have been overwhelmed by a natural catastrophe or, “regardless of cause, any fire, flood, or explosion in any part of the United States” (42 U.S.C. 5122(2)). Based upon the request of the affected state’s governor, the President may declare that a major disaster exists. The declaration identifies the areas in the state eligible for assistance. The declaration of a major disaster provides the full range of disaster assistance available under the Stafford Act, including, but not limited to, the repair, replacement or reconstruction of public and non-profit facilities, cash grants for the personal needs of victims, housing, and unemployment assistance related to job loss from the disaster.

**DUA Eligibility.** The definition of an unemployed worker in the federal regulations for DUA benefits differs from the definition used in the UC program for UC benefits. For example, eligibility for DUA benefits does not necessarily require that the individual have a substantial work history and in some cases does not require that the worker be available for work (unlike the UC program requirements). In particular, the DUA regulation defines eligible unemployed workers to include

- the self-employed;
- workers who experience a “week of unemployment” following the date the major disaster began when such unemployment is a direct result of the major disaster;
- workers unable to reach the place of employment as a direct result of the major disaster;
- workers who were to begin employment and do not have a job or are unable to reach the job as a direct result of the major disaster;
- individuals<sup>3</sup> who have become the breadwinner or major support for a household because the head of the household has died as a direct result of the major disaster; and
- workers who cannot work because of injuries caused as a direct result of the disaster.

Just as is the case in the state UC programs, workers who do not have permission to work legally in the United States are not eligible for DUA benefits. Individuals must have a social security number and an alien registration card number in order to apply for DUA benefits.

**Time Limit.** Generally, applications must be filed within 30 days after the date the state announces availability of DUA benefits. When applicants have good cause, they may file claims after the 30-day deadline. This deadline may be extended. However, initial applications filed after the 26<sup>th</sup> week following the declaration date will not be considered.

**Eligibility Clarification.** On November 13, 2001, DOL issued a new interpretive rule clarifying the definition of the phrase “unemployment as a direct result of the major

---

<sup>3</sup> The survivor who becomes the head of household is not required to have wage credits and could be eligible for DUA independent of whether the deceased household head would have been eligible for UC benefits.

disaster.” DOL issued this clarifying rule because the September 11, 2001, disasters presented a number of exigencies not anticipated by the existing regulations. The action by DOL amended 20 CFR §625.5 by adding a new paragraph (c) to read as follows:

§625.5 Unemployment caused by a major disaster.

(c) Unemployment is a direct result of the major disaster. For the purposes of paragraphs (a)(1) and (b)(1) of this section, a worker’s or self employed individual’s unemployment is a direct result of the major disaster where the unemployment is an immediate result of the major disaster itself, and not the result of a longer chain of events precipitated or exacerbated by the disaster. Such an individual’s unemployment is a direct result of the major disaster if the unemployment resulted from:

- (1) physical damage or destruction of the place of employment;
- (2) physical inaccessibility of the place of employment due to its closure by the federal government, in immediate response to the disaster; or
- (3) lack of work, or loss of revenues, provided that, prior to the disaster, the employer, or the business in the case of a self-employed individual, received at least a majority of its revenue or income from an entity that was either damaged or destroyed in the disaster, or an entity closed by the federal government in immediate response to the disaster.

Prior to the construction of this new rule, the phrase “unemployed as a direct result of a major disaster” had never been defined in the regulations. Though DOL issued the new clarifying rule in the wake of the September 11, 2001, disasters, the rule applies to any subsequently declared major disasters. The rule is intended to make clear a distinction between those individuals unemployed as an immediate result of the disaster itself, and those whose unemployment may have been caused by a long chain of events initiated by the disaster. The rule is also intended to exclude those individuals whose unemployment is the result of general economic decline that has been an indirect effect of a major disaster.

**DUA Benefit Calculation.** When a reasonable comparative earnings history can be constructed, DUA benefits are determined in a similar manner to regular state UC benefit rules. For example, self-employed persons would be expected to bring in their tax records to prove a level of earnings for the previous two years. These records would take the place of the employer-reported wage data for the workers that are used in UC benefit determination. Likewise, workers who would otherwise be eligible for UC benefits *except for the injuries caused as a direct result of the disaster that make them unavailable for work* would receive DUA benefits of an amount equivalent to what they would have received under the UC system if they were not injured and available to work. In all cases, workers will receive a DUA benefit that is at least half of the average UC benefit for that state and cannot receive more than the maximum UC benefit available in that state.

Workers who do not have enough of an employment history to qualify for UC benefits (either as a new worker or as a recent hire), receive a DUA benefit equivalent to half of the average UC benefit for that state. Unemployed workers could also be eligible for reemployment services, which may include counseling and referrals to suitable work

opportunities. DUA assistance is available to eligible individuals as long as the major disaster continues, but no longer than 26 weeks after the disaster declaration.<sup>4</sup>

In the 107<sup>th</sup> Congress, P.L. 107-154 was signed into law on March 25, 2002, extending the duration of DUA benefits from 26 to 39 weeks for victims of the September 11, 2001, terrorist attacks in the declared major disaster areas in New York and Virginia. This was the first time legislation extended the duration of DUA benefits. This extension did not apply to any subsequent major disasters. In the 109<sup>th</sup> Congress, P.L. 109-176 was signed into law on March 6, 2006, extending the duration of DUA benefits from 26 to 39 weeks for victims of the Hurricane Katrina and Rita disasters. This extension will end on June 3, 2006. This extension did not apply to any subsequent major disasters.

The maximum weekly benefit amount is determined under the provisions of the state law for UC in the state where the disaster occurred. The minimum weekly DUA benefit a worker may receive is half of the average weekly UC benefit for the state where the disaster occurred.

**Reduction in DUA Benefits.** DUA benefits may be reduced by other income received by the DUA beneficiary. These reductions are similar to the manner in which this other income reduces UC benefits but do not necessarily mirror them exactly. The reductions include

- benefits or insurance for loss of wages due to illness or disability;
- supplemental unemployment benefits paid pursuant to a collective bargaining agreement;
- private income protection insurance;
- worker's compensation or survivor's benefits if the individual receiving DUA becomes the household head as a result of the death of the head of the household because of the disaster;
- retirement, pension, or annuity income;
- earnings from employment or self-employment; and
- subsidy or price support payments, crops insurance and farm disaster relief payments.

**Patterns in DUA Benefits.** When a major disaster in a state is declared, the state's UC system requests DUA funds from DOL which in turn receives funds from the Disaster Relief Fund administered by FEMA. The DOL obligates a portion of that request to the state. The state may request more funding as a supplement if needed. **Table 1** lists the obligations (and supplements) for DUA benefits from FY2001 through FY2004.

---

<sup>4</sup> In 1970, P.L. 91-606 required that DUA benefits not exceed the maximum amount and duration of the state's UC benefit. This generally required a duration of not more than 26 weeks. Section 407 of P.L. 93-288 in 1974 amended this requirement to a duration not to exceed one year. P.L. 100-707 lowered the maximum duration to 26 weeks.

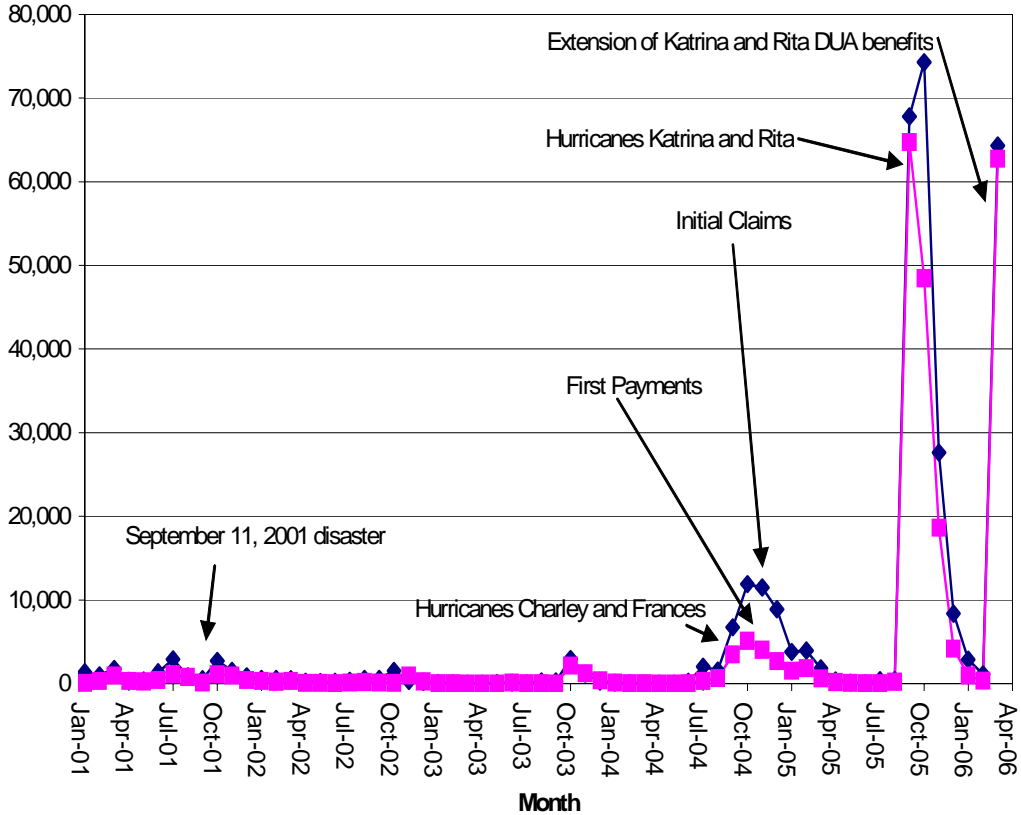
**Table 1. Disaster Unemployment Assistance Obligations, FY2001-FY2004**  
(millions of dollars)

Fiscal year	Obligations
2001	\$18.546
2002	16.290
2003	14.876
2004	73.221

Source: Federal Emergency Management Agency.

Figure 1 plots the number of individuals who applied for DUA benefits (Initial Claims) and the number of individuals who received DUA benefits for at least one week (Initial Benefits) from January 2001 through April 2006. Just as is the case in the UC program, more individuals apply than receive DUA benefits.

**Figure 1. Disaster Unemployment Assistance: Initial Claims and First Payments, January 2001- April 2006**



Source: CRS figure from data provided by U.S. Department of Labor, Office of Workforce Security.

There is a seasonal element to claims and payments which centers around the hurricane season (running from June 1 to November 30). The terrorist attacks of September 11, 2001, were the major nonseasonal event during this period not attributable to a natural (weather) disaster. The patterns of initial claims and first payments of DUA benefits on account of the terrorist attacks differ from those in other disasters. Workers continued to apply and receive benefits due to the terrorist attacks in substantial numbers through March 2002. This was attributable to the extension of benefits for an additional 13 weeks provided by P.L. 107-154.

The data from Hurricane Katrina and Rita disasters overwhelm the other disasters in the amount of benefits that were paid. The extension of DUA benefits for an additional 13 weeks allowed workers who would have originally been receiving UC benefits and had exhausted them to file for DUA benefits. This creates a second wave of first filings and initial claims in March 2006.

**How to Find out if DUA Is Available for a Major Disaster in a State.** To determine if DUA is available in a state disaster victims must ascertain

- if the event has been declared a major disaster;
- in which counties (if any) individual assistance has been made available;
- and
- how to contact the state UC agency.

FEMA maintains a website of disasters by calendar year, located at [<http://www.fema.gov/news/disasters.fema>]. Each disaster is given a “contract number,” which provides a link to relevant information pertaining to each disaster, including a list of counties designated to receive assistance.

FEMA also provides reference maps indicating which counties have been designated to receive individual, public, or hazard mitigation assistance. Subsequent amendments to disaster declarations can be made to add jurisdictions eligible for assistance. If counties in a state have been included in major disaster declarations and have been designated to receive individual assistance, it is necessary to contact the state’s unemployment agency to obtain the particulars of how to apply for and receive DUA benefits. The DOL maintains a website with links to each state’s agency at [<http://www.workforcesecurity.doleta.gov/map.asp>].

**Legislative Developments for the 109<sup>th</sup> Congress.** The Hurricane Katrina disaster has stimulated interest in the DUA benefit.

On March 6, 2006, Congress enacted P.L. 109-176, the Katrina Emergency Assistance Act of 2006. Section 2 of this law extended DUA benefits for persons eligible for DUA benefits under the Robert T. Stafford Disaster Relief and Emergency Assistance Act by reason of Hurricane Katrina for an additional 13 weeks. This extension expires on June 3, 2006 (Katrina) and June 24, 2006 (Rita). H.R. 5392 and S. 3030 both propose to extend these benefits for an additional 13 weeks, for a total of 52 weeks.